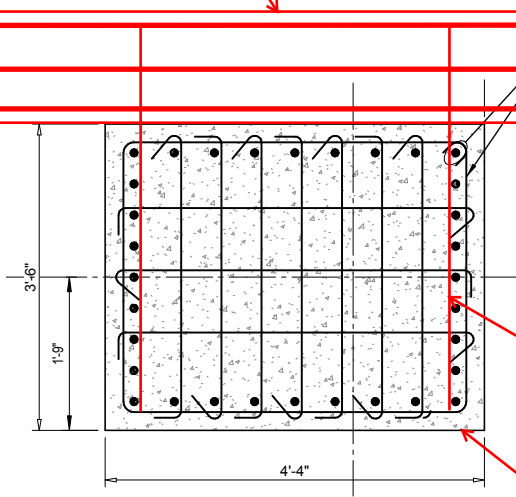


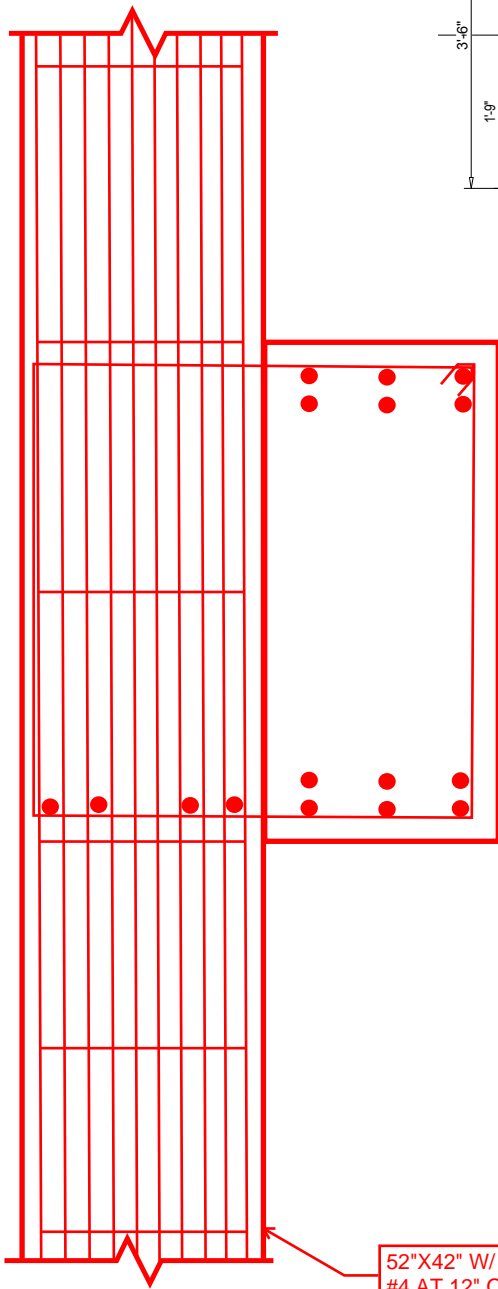
CB24 -24"x36" 6-#9
TOP AND BOTTOM
#4 STIRRUPS AT 6"

X



#5 CLOSED VERTICAL STIRRUPS
AT EACH SIDE AS SIDE. PROVIDE
ADDITIONAL #5 HORIZONTAL
STIRRUPS AT EACH LOCATION
OF VERTICAL STIRRUPS. TIE
STIRRUPS AND COLUMN
REINFORCING

52"X42" W/ 32-#8 AND
#4 AT 12" O.C.



CB24 -24"x36" 6-#9
TOP AND BOTTOM
#4 STIRRUPS AT 6"

52"X42" W/ 32-#8 AND
#4 AT 12" O.C.

X