



Product Information Packet

F40-A000-0023

125HP, 1150, 460V, UFL4034, TEFC, F2

Part Detail							
Revision:	A	Status:	PRD/A	Change #:		Proprietary:	No
Type:	AC	Elec. Spec:	L6757A	CD Diagram:	422927-001	Mfg Plant:	
Mech. Spec:		Layout:	619671-020	Poles:	04	Created Date:	02-12-2016
Base:		Eff. Date:	10-12-2016	Leads:			

Specs			
Enclosure:	TEFC		
Frame:	UFL4034Z		
Output @ Frequency:	125.000 HP @ 40 HZ		
Synchronous Speed @ Frequency:	1200 RPM @ 40 HZ		
Voltage @ Frequency:	460.0 V @ 40 HZ		
Auxiliary Box:	No Auxiliary Box		
Base Indicator:	Rigid		
Bearing Grease Type:	Polyrex EM (-20F +300F)		
Current @ Voltage:	150.000 A @ 460.0 V		
Duty Rating:	CONT		
Feedback Device:	NO FEEDBACK		
Frame Prefix:	UFL		
Heater Indicator:	No Heater		
Insulation Class:	H		
Mounting Arrangement:	F2		
Product Family:	General Industrial		
Pulley End Bearing Type:	Roller		
Pulley Face Code:	Special Combinations Not Listed		

Product Information Packet: F40-A000-0023 - 125HP,1150,460V,UFL4034,TEFC,F2

Shaft Ground Indicator:	No Shaft Grounding		
Shaft Rotation:	Reversible		
Motor Standards:	NEMA		
Thermal Device - Bearing:	None		
Thermal Device - Winding:	Normally Closed Thermostat		

Nameplate 000613006MY												
	DUTY		HP		RPM		AMPS		VOLTS		HZ	
	CONT		125		1190		150		460		40	
	CONT		125		3270		144		460		110	
CAT.NO.												
SER.NO.												
	SPEC. NO. F40-A000-0023											
PH. 3					FR UFL4034Z					INSUL. H		
DESIGN NO. L6757A					MAX SAFE SPEED 3750					AMB. 40		
S.F. 1.00					TYPE					ENCL. TEFC		
ENCL MOD					D.E. BRG. 110RU02M30X							
					O.D.E. BRG. 80BC03J30X							
	U/L (H)											

Nameplate 000613006PX

Parts List		
Part Number	Description	Quantity
WS307310	WS F40-A000-0023	1.000 EA
RA303515	RA F40-A000-0023	1.000 EA
000692000VD	LABEL WARNING	1.000 EA
000692000FP	NP, WARNING LIFT INSTRUCTIONS	1.000 EA
418018122A	LABEL	2.000 EA
418057747A	METAL FASTENER	8.000 EA
000613006MY	NP-RPMAC INVERTER DUTY	1.000 EA
000613006PX	RECONGNIZED COMPONENT LABEL	1.000 EA
422927001	C/D LABEL	1.000 EA
034141437AA	SNAP RING,BRG. LE	1.000 EA
807586006AAD	BRKT,FE/ODE,FL400,6316 BRG	1.000 EA
807586005AAA	BRKT,DE,FL400,NU222 ROLLER BRG	1.000 EA
HA4054	SHORT T-DRAIN FITTING, .125" N.P.T.	1.000 EA
HA4054	SHORT T-DRAIN FITTING, .125" N.P.T.	1.000 EA
004824015A	GREASE POLYREX EM	0.900 LB
048977006B	GRFTG - XP	1.000 EA
048977006B	GRFTG - XP	1.000 EA
418150003A	GREASE FITTING CAP	2.000 EA
035000001A	ALFTG 1/8" 1610-BL	1.000 EA
035000001A	ALFTG 1/8" 1610-BL	1.000 EA
036100090KA	HSHCS SHAFT BLOCK	4.000 EA
036100090KA	HSHCS SHAFT BLOCK	4.000 EA
036140001F	M30-3.5 X 45MM EYEBOLT	2.000 EA
034690002AL	1/4 SQ.HD.PIPE PLUG	1.000 EA

Parts List (continued)		
Part Number	Description	Quantity
034690002AL	1/4 SQ.HD.PIPE PLUG	1.000 EA
036500013AB	HX NUT,ODE BRKT	4.000 EA
804816051A	CVR,FAN,BRACE,FL400	4.000 EA
036500013AB	HX NUT,ODE BRKT	4.000 EA
609830005ACX	STUD,FRAME,FL4034	2.000 EA
609830005ACM	TBOLT	2.000 EA
415000103E	T/LUG #4AWG-1/0AWG W/HOLE FOR .375 BOLT	1.000 EA
422962052AB	STUB SHAFT	1.000 EA
607980177E	STUD TACH	1.000 EA
417733004G	GASKT	2.000 EA
034180016DA	KEY 1/4X1/4X2L	1.000 EA
702618004T	FAN KB 182/70 (112) 440	1.000 EA
804816052A	GRILL,FAN,FL440,TEBC	1.000 EA
804816056A	CVR,FAN,FL400,TEFC	1.000 EA
036000020KB	MHHCS M10-1.5X20MM PLTD.	8.000 EA
417733036C	GASKT,C/BOX BACKPLATE,REF 706310063B	1.000 EA
418057256C	HHCS M10 25MM 440 IEC	1.000 EA
032018004DK	HHCS,DRIP COVER	4.000 EA
036000016KB	HHCSM10-1.5X16MM PLTD-280	10.000 EA
706310389B	ENTRY PLATE 706310389AB	1.000 EA
417733014C	GASKT (REK P/N 187215)	1.000 EA
036000020JD	HHCS M8X20MM LONG 304S.S	5.000 EA
418018074A	GROUND LABEL G100 METRIC 160 D.C.	1.000 EA
804816054A	GUARD,BLWR,FL400	2.000 EA

Product Information Packet: F40-A000-0023 - 125HP,1150,460V,UFL4034,TEFC,F2

406673002AE	2" CAP PLUG	1.000 EA
036000055KB	M10-1.5 X 55MM HHCS	4.000 EA
036620010AB	M10 EXT. TOOTH LK WASHER	1.000 EA
418014014T	ADAPT,C/BOX	1.000 EA
613439048A	C/BOX,ADAPT,BACKPLATE	1.000 EA
414747001A	SPNUT	4.000 EA
036600008AD	FLTWSHR,T BLK SPT	8.000 EA
034001009AB	WSHR #10 PLATED-360	4.000 EA
706310063B	CBOX (REK)	1.000 EA
706310058B	CBCVR(REK P/N 187296)	1.000 EA
417733013B	GASKT (REK P/N 189486)	1.000 EA
036000016HD	HXHCS	8.000 EA
036000025JB	HHCS M8X25MM LONG PLATED	4.000 EA
706305301A	GUARD, SHAFT	1.000 EA
032375006JB	SLRHMS 10-24X3/4 PLATED	4.000 EA
034180052LA	1.0 SQ X 6.50 KEY	1.000 EA
032018024DK	HHCS 1/2-13X3L PLATED	1.000 EA
000640000P	TAG WINDING THERMOST	1.000 EA
034001013AB	FLTW BAFFLE	1.000 EA
004824007K	SPECIAL PAINT	0.300 EA

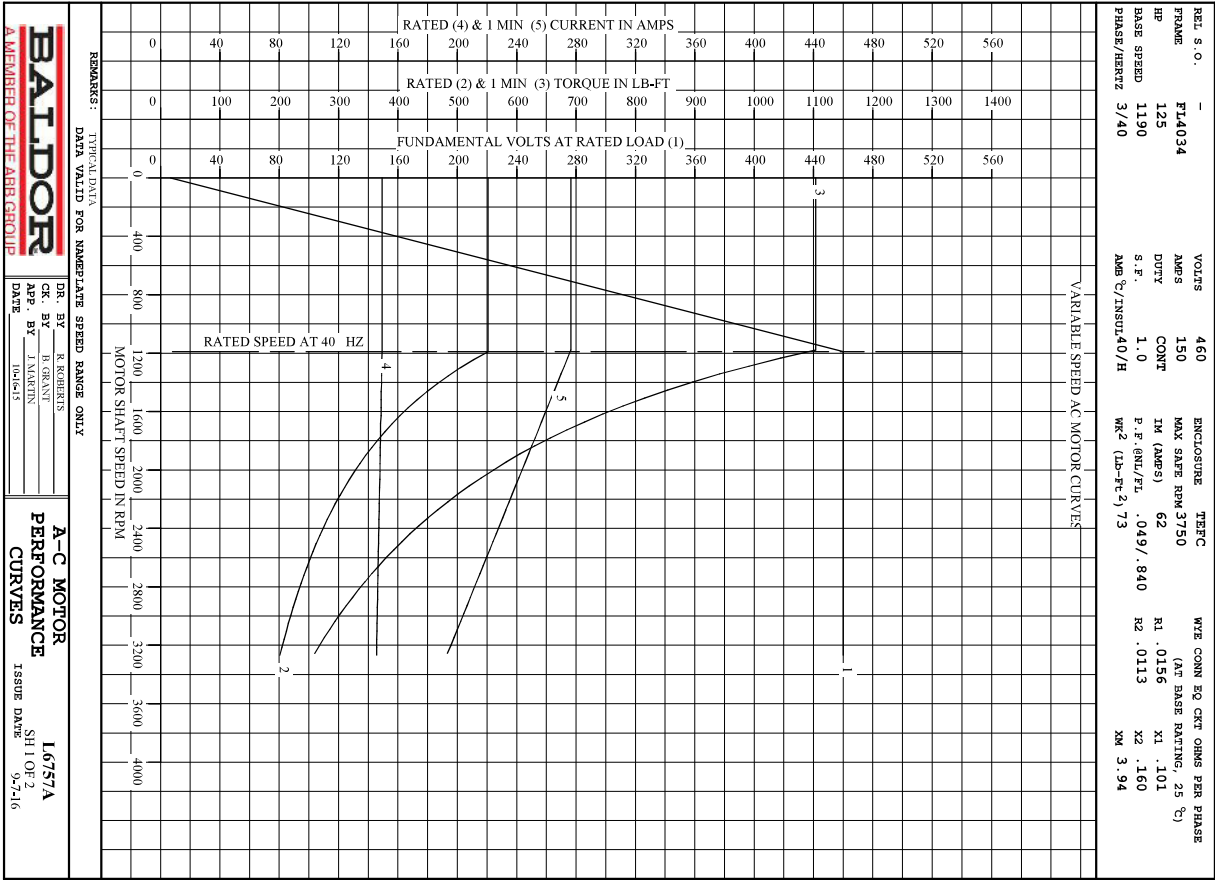
REL. S. O.	-	VOLTS	460	ENCLOSURE	TEFC	WYE CONN EQ CMT CHRG PER PHASE
FRAME	FL4034	AMPS	150	MAX SAFE RPM	3750	(AT BASE RATING, 25 °C)
HP	125	DUTY	CONT	1M (AMPS)	62	R1 .0156 X1 .101
BASE SPEED	1190	S. F.	1.0	P. F. (8N/FL)	.049/.840	R2 .0113 X2 .160
PHASE/HERTZ	3/40	AMB °C/INSUL	40/H	WK ² (LB-FT ²)	73	X3 3.94

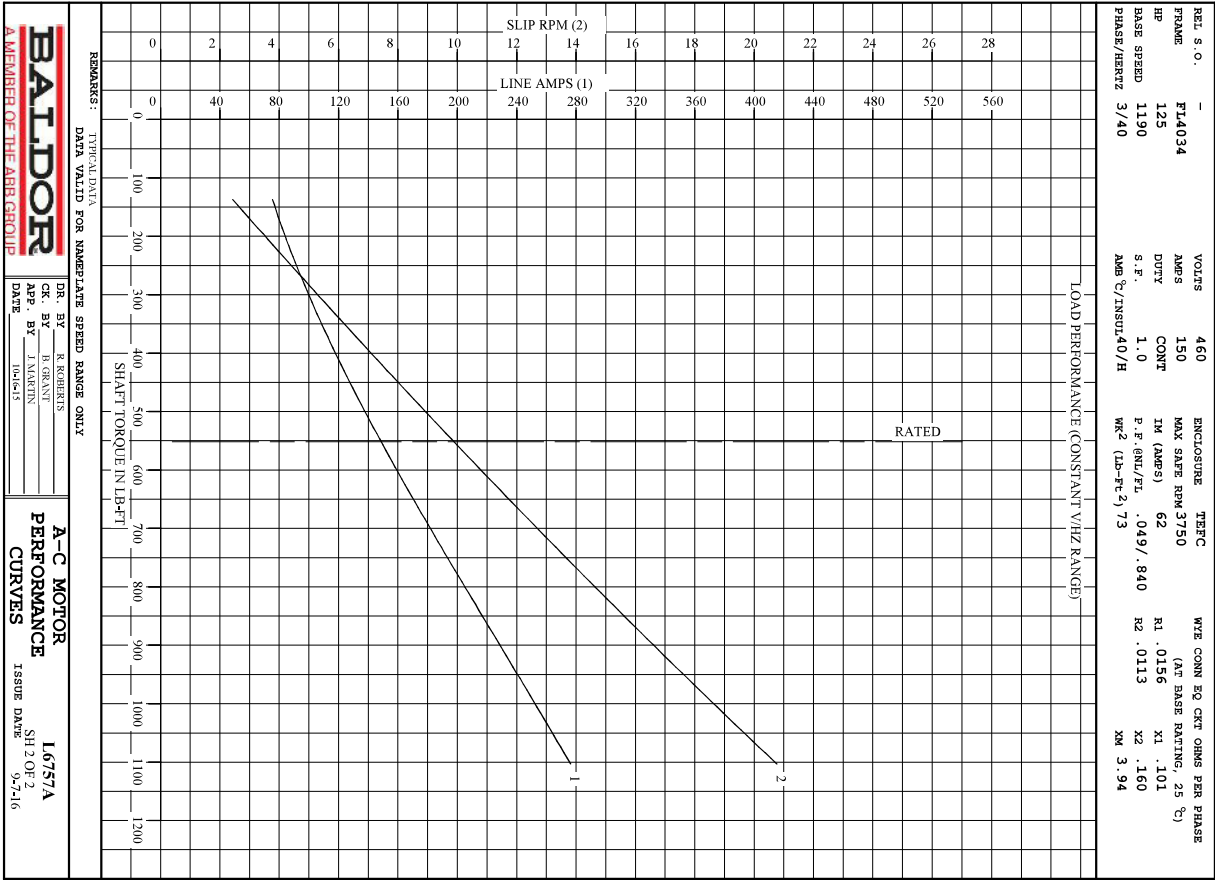
RATED FULL LOAD DATA						
	RPM	HP	TORQUE LB-FT	FUND VOLTS	FREQ-HZ	AMPS
BASE SPEED	1190	125	552	460	40	149
MAX SPEED	3268	125	201	460	110	145
MIN SPEED	0	0	552	6.73	.330	149

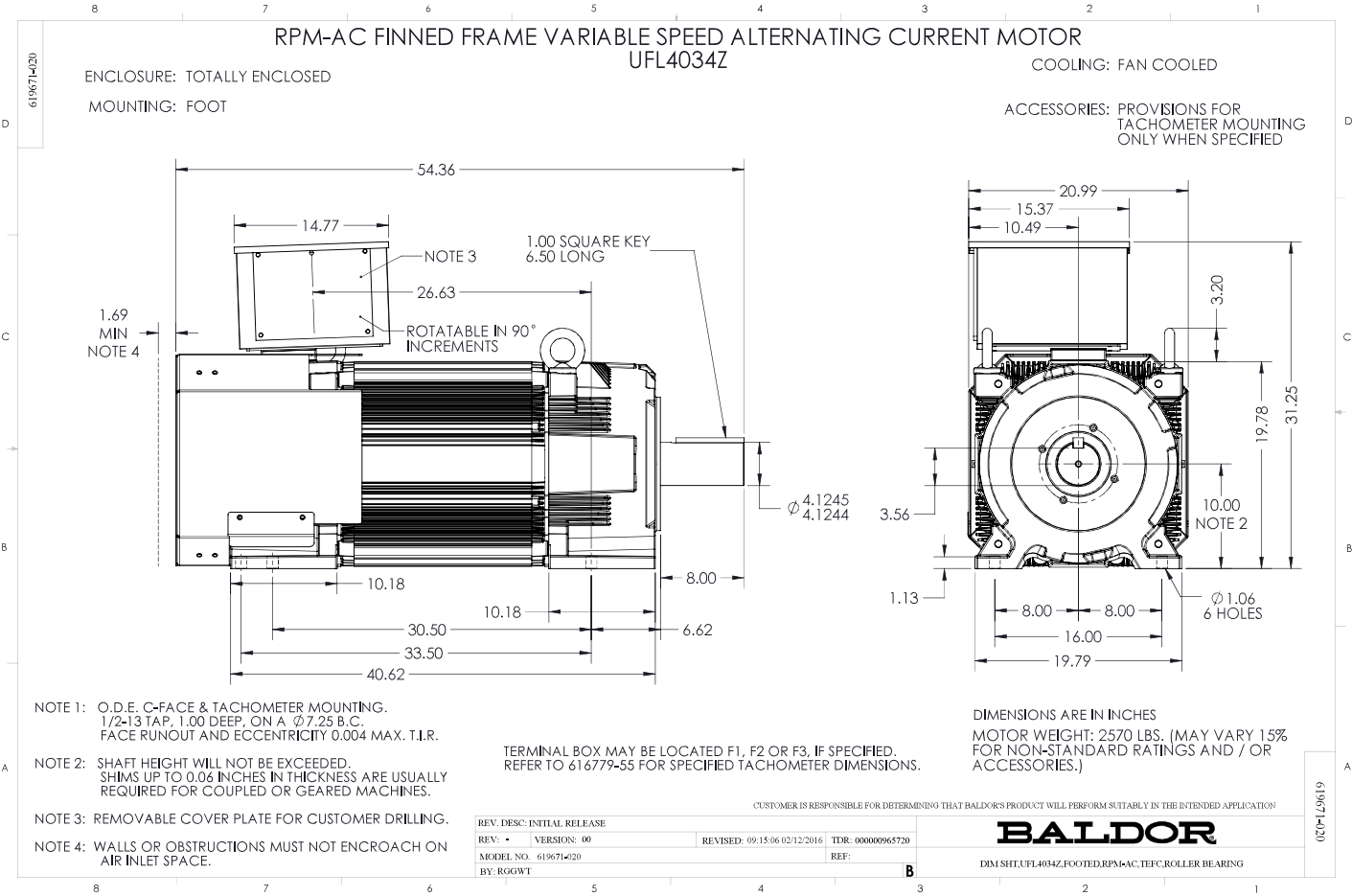
LOAD PERFORMANCE AT BASE SPEED						
	RPM	HP	TORQUE LB-FT	FUND VOLTS	FREQ-HZ	AMPS
NO LOAD	1200	0	0	460	40	61.5
1/4	1198	31.3	137	460	40	75.7
1/2	1195	62.5	275	460	40	95.0
3/4	1193	93.8	413	460	40	120
FULL LOAD	1190	125	552	460	40	149
O/L	1179	248	1103	460	40	276

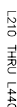
REMARKS: TYPICAL DATA

BALDOR A MEMBER OF THE ABB GROUP		DR. BY R. ROBERTS CK. BY B. GRANT APP. BY J. MARTIN DATE 10-16-15	A-C MOTOR PERFORMANCE DATA L6757A ISSUE DATE 9-7-16
--	--	--	--









RPM AC INDUSTRIAL ALTERNATING CURRENT MOTORS
STEEL, CAST IRON, WELD AND TERMINAL BOARD CONDUIT BOX DIMENSIONS
NEMA FRAMES L180 thru L440 and IEC FRAMES DL112 thru DL280

616779-00

STEEL TENSILE STD. DIMENSIONS (MAXIMUM)										CAST IRON TENSILE STD. DIMENSIONS (MAXIMUM)									
FRAME	MAX	STANDARD SIZE			STANDARD SIZE			FRAME	MAX	STANDARD SIZE			STANDARD SIZE						
ACQ	ACQ	IN	CM	IN	CM	IN	CM	ACQ	ACQ	IN	CM	IN	CM	IN	CM				
180	38	6.3	6.94	2.25	5.42	5.00	7.62	180	40	1.9	4.88	1.50	3.81	1.25	3.18				
180	75	12	9.88	7.62	1.91	5.42	5.00	7.62	180	40	1.9	4.88	1.50	3.81	1.25	3.18			
210	160	2	12.75	9.19	4.48	8.44	7.25	7.62	210	160	4	14.65	10.50	3.62	8.00	9.25			
210	305	4	14.62	10.50	5.08	10.56	9.99	7.62	210	305	4	14.62	11.38	4.12	9.50	10.00			
240	160	2	18.38	13.25	6.25	12.10	11.62	7.62	240	160	5	18.50	13.71	5.30	12.75	12.50			
240	305	4	21.00	15.88	6.50	14.10	13.62	7.62	240	305	5	21.00	15.88	6.50	14.10	13.62			
270	160	2	16.38	12.81	4.25	8.12	7.62	7.62	270	160	3	16.51	12.88	4.32	8.00	9.50			
270	305	4	18.25	14.11	4.50	10.56	9.99	7.62	270	305	4	18.25	14.68	4.92	9.50	10.00			
300	500	5	22.00	16.88	6.50	12.10	11.62	7.62	300	510	5	22.12	16.88	7.12	15.00	15.50			

PAVE TYPE	MILL CEMENT RATIO DIMENSIONS (CM/INCH)						POSS. NUMBER
	R-1	R-1	R-1	R-1	R-1	R-1	7065-10-3-CR-V
210	160	150	140	130	120	110	7065-10-3-CR-V
180	160	150	140	130	120	110	7065-10-3-CR-V
150	160	150	140	130	120	110	7065-10-3-CR-V
120	160	150	140	130	120	110	7065-10-3-CR-V
90	160	150	140	130	120	110	7065-10-3-CR-V
60	160	150	140	130	120	110	7065-10-3-CR-V
30	160	150	140	130	120	110	7065-10-3-CR-V
0	160	150	140	130	120	110	7065-10-3-CR-V
1400	160	150	140	130	120	110	7065-10-3-CR-V
1200	160	150	140	130	120	110	7065-10-3-CR-V
1000	160	150	140	130	120	110	7065-10-3-CR-V
800	160	150	140	130	120	110	7065-10-3-CR-V
600	160	150	140	130	120	110	7065-10-3-CR-V
400	160	150	140	130	120	110	7065-10-3-CR-V
200	160	150	140	130	120	110	7065-10-3-CR-V
0	160	150	140	130	120	110	7065-10-3-CR-V

[illegible][illegible]

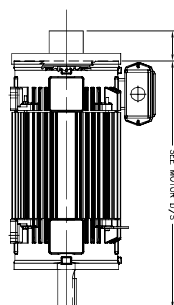
CUSTOMER IS RESPONSIBLE FOR DETERMINING THAT BALDOR'S PRODUCT WILL PERFORM SUITABLY IN THE INTENDED APPLICATION

CUSTOMER IS RESPONSIBLE FOR DETERMINING THAT BALDOR'S PRODUCT WILL PERFORM AS REQUIRED.		
REV. DESC: ADD 1260 AMP L400, ADD 1300 AMP L440		
REV. LTR: A	VERSION: 01	TDR: 000000B04459
FILE: \RGG\00003\688	REVISED: 10:23:58 06/18/2013	BY: RCGWT

BALDOR

DIM SHT NEMA L180 THRU L440 & IEC DL112 THRU DL280

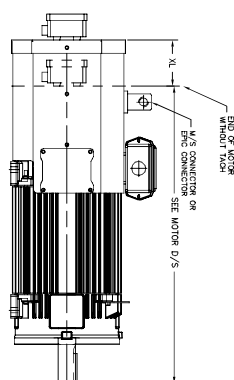
DIMENSIONS ARE IN INCHES(mm).

DPFV, DPSV, TEPV, TESV, TENV & TEAO-PE
IC06, IC17, IC37, IC410, & IC416-PB

• THIS DIMENSION INCLUDES COVER FOR X/T MOTOR

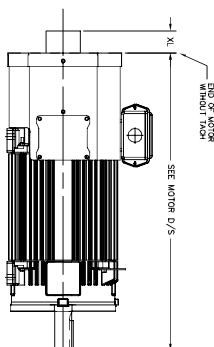
[illegible]

TEAO-BC, ICA16-BC
EXCLUDES NEMA FRAMES FL320 THRU FL440
AND
IEC FRAMES FDL200 THRU FDL280

[illegible]

TEFC, IC411

TACH MODEL	XL Ingestions (mg)	LBS.
BET1 HS35	2.88 (7.84)	10
NORTHSTAR HS35M	3.31 (8.84)	7
DYNAPAR H20	3.75 (9.95)	15
DYNAPAR HS35, HS180	2.88 (7.74)	7
ROX10	9.75 (24.8)	35
EDM45	7.90 (23.1)	35
ATRON H550N	4.19 (11.05)	2
STEDAN HS20	3.75 (9.95)	1
DYNAPAR HS20	2.00 (5.4)	1
NORTHSTAR HS25	2.81 (7.74)	2
NORTHSTAR HS180	3.30 (8.84)	5
ATRON H42	1.93 (4.9)	.7



516779-055

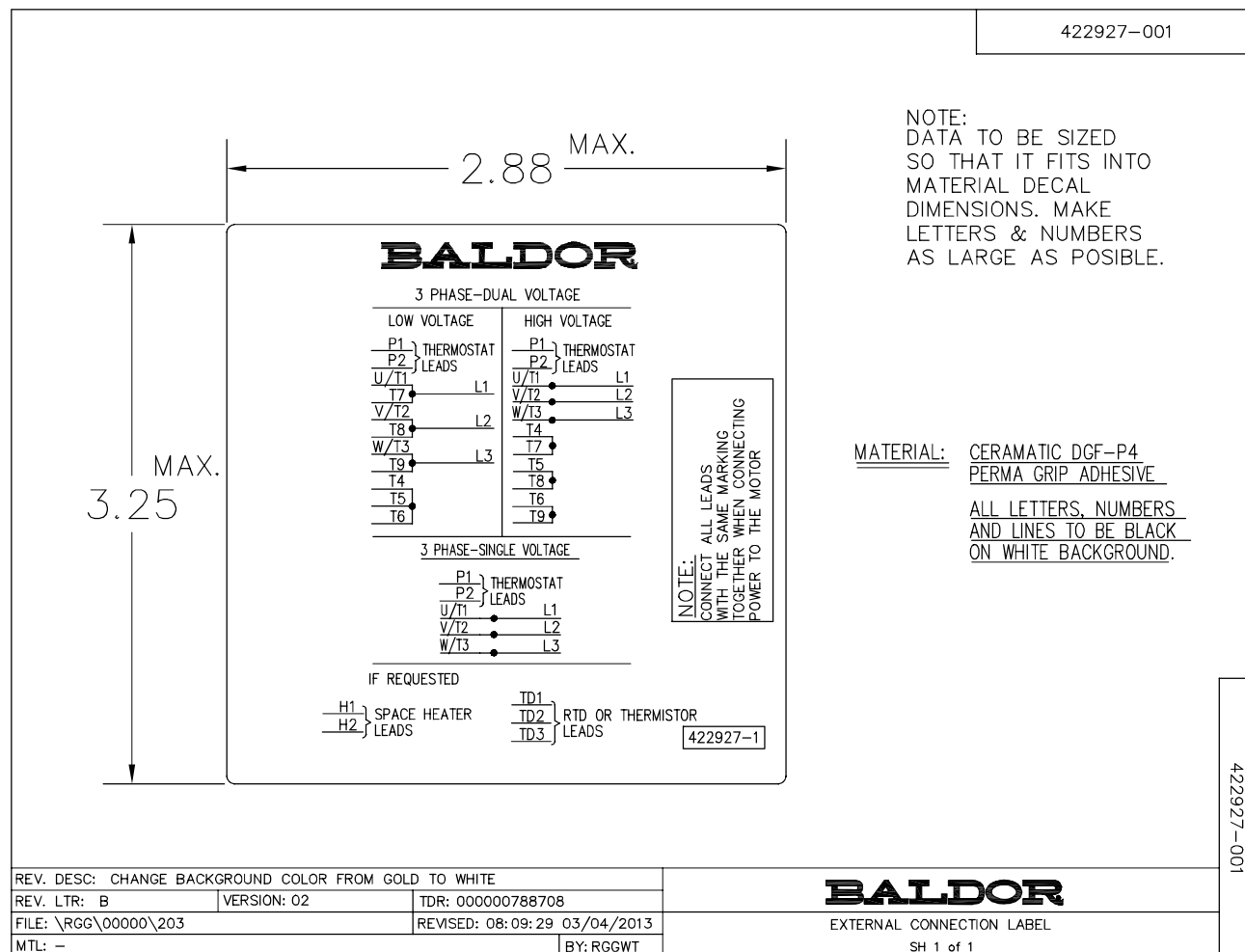
616779-055

CUSTOMER IS RESPONSIBLE FOR DETERMINING THAT BALDOR'S PRODUCT WILL PERFORM SUITABLY IN THE INTENDED APPLICATION

REV. LTR: Y	VERSION: 23	TDR: 000001059525
FILE: \RGG\00003\694	REVISED: 07:16:49 02/12/2018	BY: RGGWT

BALDOR

DIM SHT TACH DIM NEMA FL180 – FL440 IEC FDL112 – FDL280



Marketing maintained PDF of MN406:

<http://www.baldor.com/support/Literature/Load.ashx/MN406?ManNumber=MN406>