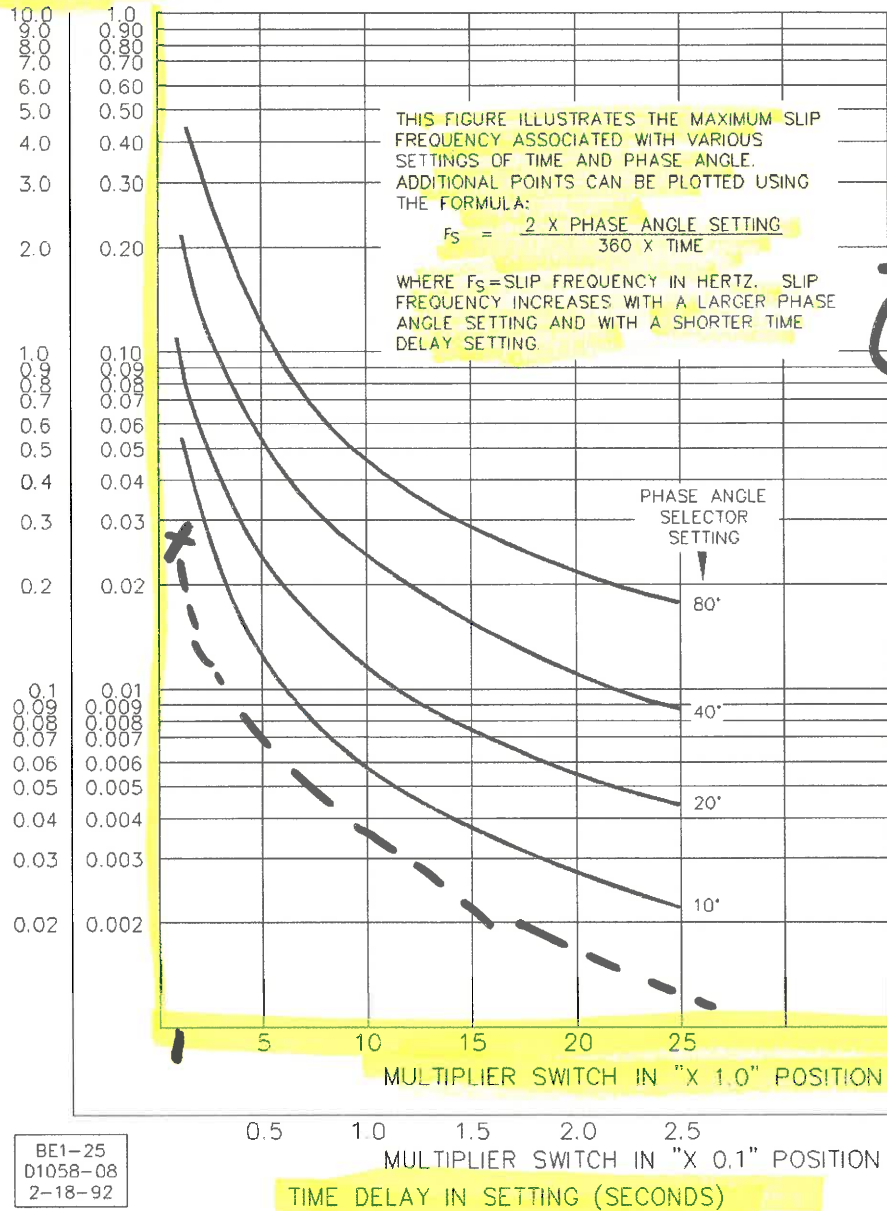


MAXIMUM SLIP FREQUENCY IN HZ



$$\frac{2 \times 5}{(360)(1)} = \frac{10}{360} = .0278 \text{ Hz}$$

Figure 5-1. Maximum Slip Frequency versus Time Delay and Phase Angle Settings

Condition and Mode Switches

Detailed instructions and precautions for programming the Mode switches and Condition switches are provided in the *Controls and Indicators* chapter. The location of the switches is shown.

When output contacts of both Sync and Voltage Monitor functions are wired in parallel, the live line/live bus Condition Switch No. 2 must be in OFF position. Otherwise, the Sync function will be overruled. If the condition switches are external (option 2-C, 2-U, or 2-V), the external LL-LB switch should be omitted when Sync and Voltage Monitor contacts are in parallel.