

Compatibility Information

- PC Software -

Revision history : See the top page of each chapter

Business Communication Business Unit
Connected Solutions Company
Panasonic Corporation

Table of contents :

<u>1. Operability for Windows OS</u>	Page 3
<u>Appendix</u>	Page 9
<u>2. Operability for Office Software</u>	Page 17

1. Operability for Windows OS

Revision history of this chapter :

2012.08.02	PSN/BSBU
2012.08.29	Schedule is revised.
2012.10.31	Information for phone-related software products is added.
2013.1.9	PCMC NS release plan are changed
2013.1.15	Update the status
2013.1.22	Update the status and add the Compatible mode set page
2013.1.25	Update the Phones status. Clarify that the Call Account is not support new OS.
2013.3.4	Update the IP-Softphone status
2015.11.06	Update for windows 10.
2018.5.24	CNS/BCBU Update for Windows Server 2012 R2 and Windows Server 2016.

1. Operability for Windows OS

➤ Background

Microsoft has already released the following OS as of May 2018.

- Windows Server 2012 R2
- Windows Server 2016

➤ Compatibility with new OS

Windows Server 2012 R2 :

- GUI mode is supported.
(Not support Server Core mode / MinShell mode.)

Windows Server 2016 :

- GUI mode is supported.
(Not support Server Core Mode / Nano Server Mode.)

1. Operability for Windows OS

Check OK = Not necessary to change the current version. It works on new Windows OS.
 Check OK *(1) = Necessary to add rules for CA Client in Windows Firewall on Windows Server.
 See Appendix-1 at the end of this document.
 Check OK *(2) = Necessary to add the configuration in Internet Explorer on Windows Server.
 See Appendix-2 at the end of this document.

Software name	Win10 (64)	Win10 (32)	Win8.1 (64)	Win8.1 (32)	Win7 (64)	Win7 (32)	<i>Win Svr 2016</i>	<i>Release</i>	<i>Win Svr 2012 R2</i>	<i>Release</i>	Win Svr 2012	Win Svr 2008 (64)	Win Svr 2008 (32)
UC Pro Client	Yes	Yes	Yes	Yes	Yes	Yes	Yes	Check OK	Yes	Check OK	Yes	Yes	Yes
UC Pro Server	Yes	Yes	Yes	Yes	Yes	Yes	Yes	Check OK	Yes	Check OK	Yes	Yes	Yes
CA Client (Communication Assistant Client)	Yes	Yes	Yes	Yes	Yes	Yes	Thin Client	Check OK *(1)	Thin Client	Check OK *(1)	Thin Client	Thin Client	Thin Client
CA Server (Communication Assistant Server)	Yes	Yes	Yes	Yes	Yes	Yes	Yes	Check OK *(2)	Yes	Check OK *(2)	Yes	Yes	Yes
CSTA Multiplexer	Yes	Yes	Yes	Yes	Yes	Yes	Yes	Check OK	Yes	Check OK	Yes	Yes	Yes
3rd Party TSP	LAN Only	LAN Only	LAN Only	Yes	LAN Only	Yes	LAN Only	Check OK	LAN Only	Check OK	LAN Only	LAN Only	Yes
DL IP Softphone CA V4 IP Softphone	Yes	Yes	Yes	Yes	Yes	Yes	N/A	-	N/A	-	N/A	N/A	N/A
UM IMAP Session Controller	Yes	Yes	Yes	Yes	Yes	Yes	N/A	-	N/A	-	N/A	N/A	N/A
FAX Driver	Yes	Yes	Yes	Yes	Yes	Yes	N/A	-	N/A	-	N/A	N/A	N/A
C#SDK	NO	NO	NO	NO	Yes	Yes	NO	-	NO	-	NO	Yes	Yes

1. Operability for Windows OS

Condition * (1) = Windows7 compatibility mode must be set. Please see Appendix-3 at the end of this document.

Condition * (2) = If the USB driver is installed with PCMC, the installer displays an error message.
Please install the USB driver separately.

Software name	Win10 (64)	Win10 (32)	Win8.1 (64)	Win8.1 (32)	Win7 (64)	Win7 (32)	<i>Win Svr 2016</i>	<i>Win Svr 2012 R2</i>	Win Svr 2012	Win Svr 2008 (64)	Win Svr 2008 (32)
NSX Maintenance Console (Including offline WebMC and Bulk Administration Tool)	Yes	Yes	Yes	Yes	Yes	Yes	N/A	N/A	N/A	N/A	N/A
NS Unified Web Maintenance Console (including offline mode)	Yes	Yes	Yes	Yes	Yes	Yes	N/A	N/A	N/A	N/A	N/A
Unified PC Programming Software (PCMC) For TDA/TDE/NCP	Yes	Yes	Yes	Yes	Yes	Yes	N/A	N/A	N/A	N/A	N/A
PC Programming software (PCMC) For TVM/TVA	Yes Condition * (1) * (2)	Yes Condition * (1) * (2)	Yes Condition * (1)	Yes Condition * (1)	Yes	Yes	N/A	N/A	N/A	N/A	N/A
USB Driver (KX-TE Series TA824, TVM TVA Series)	Yes	Yes	Yes	Yes	Yes	Yes	N/A	N/A	N/A	N/A	N/A
Voice Mail converter (Audio File Extraction Tool)	Yes	Yes	Yes	Yes	Yes	Yes	N/A	N/A	N/A	N/A	N/A
PC Programming Software (PCMC) For analog PBX	Yes	Yes	Yes	Yes	Yes	Yes	N/A	N/A	N/A	N/A	N/A

1. Operability for Windows OS (Phones)

Software name	Win10 (64)	Win10 (32)	Win8 (32)	Win8 (64)	Win7 (32)	Win7 (64)	<i>Win Svr</i> 2016	<i>Win Svr</i> 2012 R2	Win Svr 2012	Win Svr 2008 (32)	Win Svr 2008 (64)
Embedded Web IF (UT)	Yes	Yes	Yes	Yes	Yes	–	N/A	N/A	N/A	N/A	N/A
Embedded Web IF (UDS)	Yes	Yes	Yes	Yes	Yes	–	N/A	N/A	N/A	N/A	N/A
Embedded Web IF (TGP)	Yes	Yes	Yes	Yes	Yes	–	N/A	N/A	N/A	N/A	N/A
Embedded Web IF (HDV)	Yes	Yes	Yes	Yes	Yes	–	N/A	N/A	N/A	N/A	N/A
PC Tool (UDS)	Yes	Yes	Yes	Yes	Yes	Yes	N/A	N/A	N/A	N/A	N/A
Conferencing Phone Manager (NT700)	Yes	Yes	Yes	Yes	Yes	Yes	N/A	N/A	N/A	N/A	N/A

1. Operability for Windows OS (Not support)

Software which does not support Windows7 or later.

Software name	Win10 (64)	Win10 (32)	Win8.1 (64)	Win8.1 (32)	Win7 (64)	Win7 (32)	<i>Win Svr 2016</i>	<i>Win Svr 2012 R2</i>	Win Svr 2012	Win Svr 2008 (64)	Win Svr 2008 (32)
PA Client	NO	NO	NO	NO	NO	NO	NO	NO	NO	NO	NO
PA Server	NO	NO	NO	NO	NO	NO	NO	NO	NO	NO	NO
Call Accounting	NO	NO	NO	NO	NO	NO	NO	NO	NO	NO	NO
NCV200 Client	NO	NO	NO	NO	NO	NO	NO	NO	NO	NO	NO
PMS Interface Software	NO	NO	NO	NO	NO	NO	NO	NO	NO	NO	NO
PC Console	NO	NO	NO	NO	NO	NO	NO	NO	NO	NO	NO
PC Phone / PC Phone Light	NO	NO	NO	NO	NO	NO	NO	NO	NO	NO	NO
1 st party TSP	NO	NO	NO	NO	NO	NO	NO	NO	NO	NO	NO

Appendix

Appendix-1:

Notes on Windows Server 2012 R2 or Windows Server 2016
for CA Server
(Required settings)

Appendix-2:

Notes on Windows Server 2012 R2 or Windows Server 2016
for CA Client (Including use for thin-clients)
(Required settings)

Appendix-3:

Notes on Windows 8 or later
for KX-TVM200/50, KX-TVA200/50 PC Programming software
(Compatible mode set)

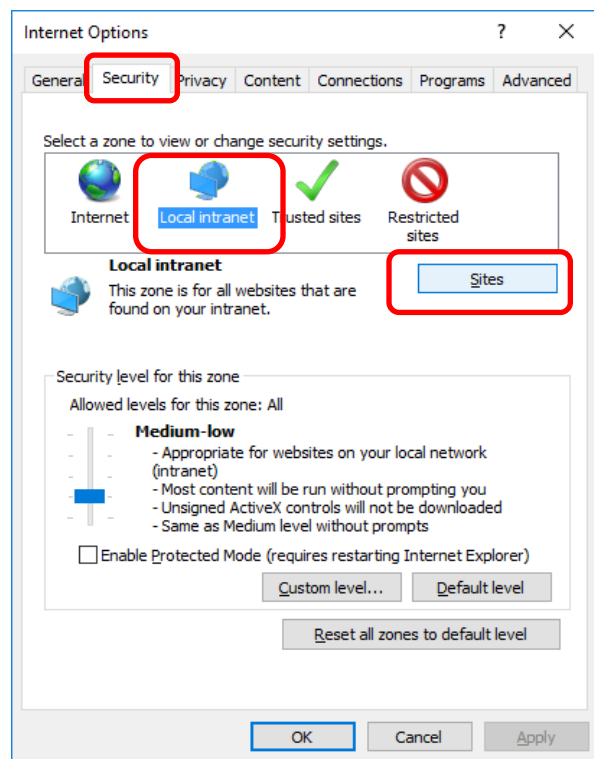
Notes on Windows Server 2012 R2 or Windows Server 2016 for CA Server (Required settings)

CA Server

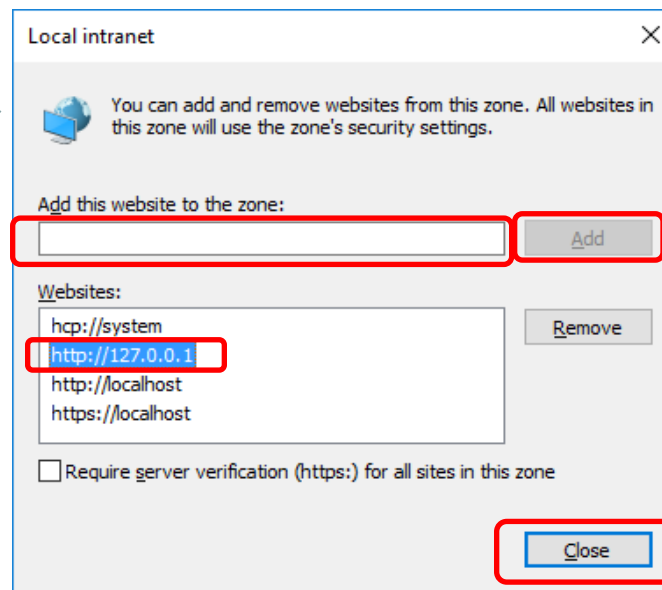
In order to run CA Server on Windows Server 2012 R2 or Windows Server 2016, some settings are required on the Windows Server side.

To use CA Manager feature on the server, it is necessary to add the URL <http://127.0.0.1> to configuration of “Security” – “Local intranet” setting in the Internet Explorer 11.

1. Open “Tools” - “Internet options” screen on Internet Explorer
2. Open “Security” tab on the screen and select “Local intranet”, then press “Sites” button.



3. Entry the URL <http://127.0.0.1> , then press “Add” button.
4. Confirm the character string “http://127.0.0.1” has been added to the Websites list and press “Close” button.



CA Client (Including use for thin-clients)

In order to run CA Client (Including use for thin-clients) on Windows Server 2012 R2 or Windows Server 2016, some settings are required on the Windows Server side.

To use CA Client on the server, it is necessary to add a new rule as CA Client to each of the Inbound and Outbound rules of Windows Firewall on the server.
Add these new rules on the “Advanced settings” screen of “Windows Firewall”.

1. Windows Firewall – Inbound Rules list

Inbound Rules			
Name	Group	Profile	Enabled
CA Server		Public	Yes
CA Server		Public	Yes
Communication Assistant		All	Yes
CSTAMux		Public	Yes
CSTAMux		Public	Yes
LightTPD		Public	Yes
LightTPD		Public	Yes
Trend Micro OfficeScan Listener		All	Yes
AllJoyn Router (TCP-In)	AllJoyn Router	Domain	Yes
AllJoyn Router (UDP-In)	AllJoyn Router	Domain	Yes
BranchCache Content Retrieval (HTTP-In)	BranchCache - Content Retr...	All	No
BranchCache Hosted Cache Server (HTT...	BranchCache - Hosted Cach...	All	No
BranchCache Peer Discovery (WSD-In)	BranchCache - Peer Discove...	All	No
Cast to Device functionality (qWave-TCP...	Cast to Device functionality	Private	Yes
Cast to Device functionality (qWave-UDP...	Cast to Device functionality	Private	Yes
Cast to Device SSDP Discovery (UDP-In)	Cast to Device functionality	Public	Yes
Cast to Device streaming server (HTTP-St...	Cast to Device functionality	Private	Yes
Cast to Device streaming server (HTTP-St...	Cast to Device functionality	Public	Yes
Cast to Device streaming server (HTTP-St...	Cast to Device functionality	Domain	Yes
Cast to Device streaming server (RTCP-St...	Cast to Device functionality	Public	Yes
Cast to Device streaming server (RTCP-St...	Cast to Device functionality	Private	Yes
Cast to Device streaming server (RTCP-St...	Cast to Device functionality	Domain	Yes
Cast to Device streaming server (RTSP-Str...	Cast to Device functionality	Public	Yes
Cast to Device streaming server (RTSP-Str...	Cast to Device functionality	Private	Yes
Cast to Device streaming server (RTSP-Str...	Cast to Device functionality	Domain	Yes
Cast to Device UPnP Events (TCP-In)	Cast to Device functionality	Public	Yes
COM+ Network Access (DCOM-In)	COM+ Network Access	All	No
COM+ Remote Administration (DCOM-In)	COM+ Remote Administrati...	All	No
Core Networking - Destination Unreacha...	Core Networking	All	Yes
Core Networking - Destination Unreacha...	Core Networking	All	Yes
Core Networking - Dynamic Host Config...	Core Networking	All	Yes
Core Networking - Dynamic Host Config...	Core Networking	All	Yes

2. Windows Firewall – Outbound Rules list

Outbound Rules			
Name	Group	Profile	Enabled
Communication Assistant		All	Yes
AllJoyn Router (TCP-Out)	AllJoyn Router	Domain	Yes
AllJoyn Router (UDP-Out)	AllJoyn Router	Domain	Yes
BranchCache Content Retrieval (HTTP-O...	BranchCache - Content Retr...	All	No
BranchCache Hosted Cache Client (HTT...	BranchCache - Hosted Cach...	All	No
BranchCache Hosted Cache Server(HTT...	BranchCache - Hosted Cach...	All	No
BranchCache Peer Discovery (WSD-Out)	BranchCache - Peer Discove...	All	No
Cast to Device functionality (qWave-TCP...	Cast to Device functionality	Private	Yes
Cast to Device functionality (qWave-UDP...	Cast to Device functionality	Private	Yes
Cast to Device streaming server (RTP-Stre...	Cast to Device functionality	Domain	Yes
Cast to Device streaming server (RTP-Stre...	Cast to Device functionality	Private	Yes
Cast to Device streaming server (RTP-Stre...	Cast to Device functionality	Public	Yes
Core Networking - DNS (UDP-Out)	Core Networking	All	Yes
Core Networking - Dynamic Host Config...	Core Networking	All	Yes
Core Networking - Dynamic Host Config...	Core Networking	All	Yes
Core Networking - Group Policy (LSASS-...	Core Networking	Domain	Yes
Core Networking - Group Policy (NP-Out)	Core Networking	Domain	Yes
Core Networking - Group Policy (TCP-Out)	Core Networking	Domain	Yes
Core Networking - Internet Group Mana...	Core Networking	All	Yes
Core Networking - IPHTTPS (TCP-Out)	Core Networking	All	Yes
Core Networking - IPv6 (IPv6-Out)	Core Networking	All	Yes
Core Networking - Multicast Listener Do...	Core Networking	All	Yes
Core Networking - Multicast Listener Qu...	Core Networking	All	Yes
Core Networking - Multicast Listener Rep...	Core Networking	All	Yes
Core Networking - Multicast Listener Rep...	Core Networking	All	Yes
Core Networking - Neighbor Discovery A...	Core Networking	All	Yes
Core Networking - Neighbor Discovery S...	Core Networking	All	Yes
Core Networking - Packet Too Big (ICMP...	Core Networking	All	Yes
Core Networking - Parameter Problem (I...	Core Networking	All	Yes
Core Networking - Router Advertisement...	Core Networking	All	Yes
Core Networking - Router Solicitation (I...	Core Networking	All	Yes
Core Networking - Teredo (UDP-Out)	Core Networking	All	Yes

Please refer to the following page for a breakdown of each Rule should be set on Windows Firewall for CA Client .



1. Windows Firewall – Inbound Rules for CA Client on Windows Server

General

Communication Assistant Properties

General

Name: Communication Assistant

Description:

☒ Enabled

Action

☒ Allow the connection

☐ Allow the connection if it is secure

☐ Block the connection

OK Cancel Apply

- Setting Details:
- Name : "Communication Assistant"
 - Enabled
 - Action: •Allow the connection

Programs and Services

Communication Assistant Properties

Programs and Services

Programs

☒ This program:

%ProgramFiles% (x86)\\Panasonic\\Com

Application Packages

Specify the application packages to which this rule applies.

Services

Specify the services to which this rule applies.

OK Cancel Apply

- Setting Details:
- Programs: •This program:
"%ProgramFiles% (x86)\\Panasonic\\Communication Assistant\\Communication Assistant.exe"

Protocols and Ports

Communication Assistant Properties

Protocols and Ports

Protocol type: Any

Protocol number: 0

Local port: All Ports

Remote port: All Ports

Internet Control Message Protocol (ICMP) settings:

OK Cancel Apply

- Setting Details:
- Protocol type: Any



Scope

Communication Assistant Properties

General | **Scope** | Programs and Services | Remote Computers

Protocols and Ports | Scope | Advanced | Local Principals | Remote Users

Local IP address

☒ Any IP address

☐ These IP addresses:

Remote IP address

☒ Any IP address

☐ These IP addresses:

OK Cancel Apply

- Setting Details:
- Local IP address: •Any IP address
 - Remote IP address: •Any IP address

Note :
The above setting can be changed appropriately according to the circumstances of your operating environment.

Advanced

Communication Assistant Properties

General | Programs and Services | **Advanced** | Remote Computers

Protocols and Ports | Scope | Advanced | Local Principals | Remote Users

Profiles

Specify profiles to which this rule applies.

☒ Domain

☒ Private

☒ Public

Interface types

Specify the interface types to which this rule applies. Customize...

Edge traversal

Edge traversal allows the computer to accept unsolicited inbound packets that have passed through an edge device such as a Network Address Translation (NAT) router or firewall.

Block edge traversal

Prevent applications from receiving unsolicited traffic from the Internet through a NAT edge device.

OK Cancel Apply

- Setting Details:
- Profiles
 - └ Domain
 - └ Private
 - └ Public



2. Windows Firewall – Outbound Rules for CA Client on Windows Server

General

Communication Assistant Properties

General

Name: Communication Assistant

Description:

☒ Enabled

Action

☒ Allow the connection

☐ Allow the connection if it is secure

☐ Block the connection

OK Cancel Apply

- Setting Details:
- Name : “Communication Assistant”
 - Enabled
 - Action: •Allow the connection

Programs and Services

Communication Assistant Properties

Programs and Services

Programs

☒ This program:

%ProgramFiles% (x86)*Panasonic*Com

Application Packages

Specify the application packages to which this rule applies.

Services

Specify the services to which this rule applies.

OK Cancel Apply

- Setting Details:
- Programs: •This program:
“%ProgramFiles% (x86)*Panasonic*Communication Assistant*Communication Assistant.exe”

Protocols and Ports

Communication Assistant Properties

Protocols and Ports

Protocol type: Any

Protocol number: 0

Local port: All Ports

Remote port: All Ports

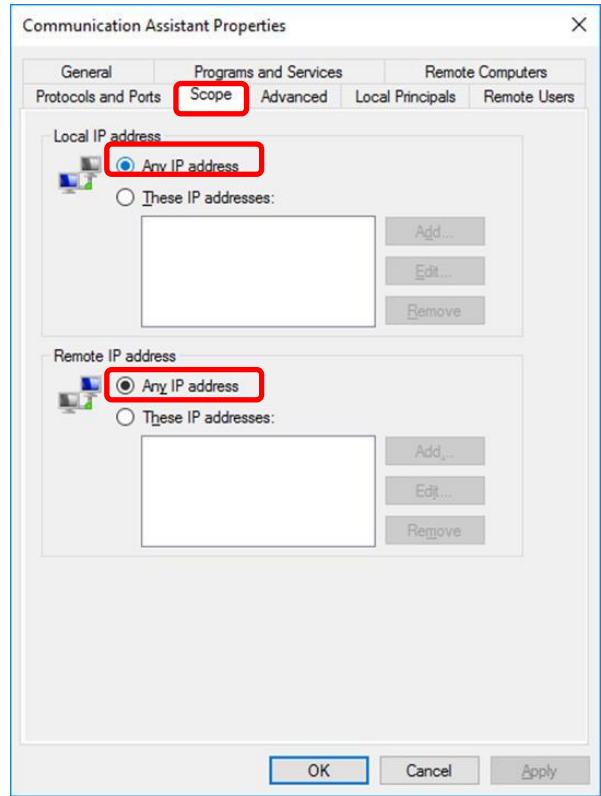
Internet Control Message Protocol (ICMP) settings:

OK Cancel Apply

- Setting Details:
- Protocol type: Any

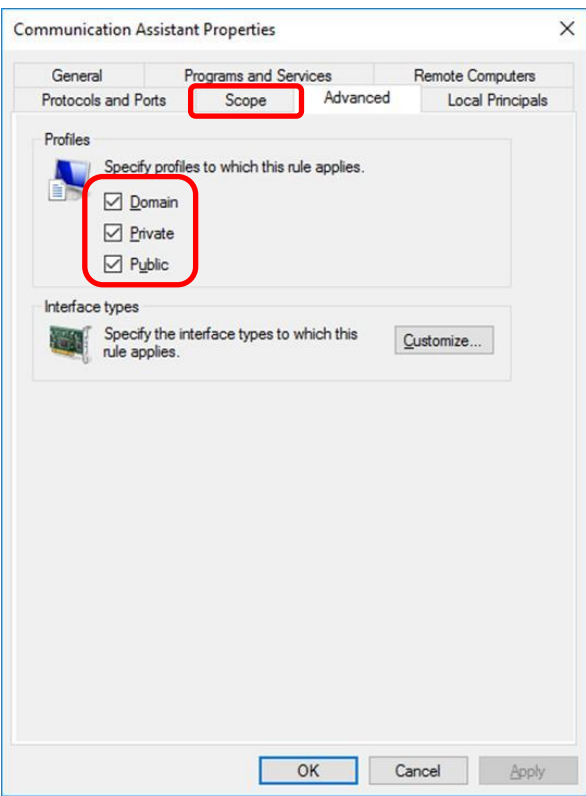


Scope



- Setting Details:
- Local IP address: •Any IP address
 - Remote IP address: •Any IP address

Advanced



- Setting Details:
- Profiles
 - └ Domain
 - └ Private
 - └ Public

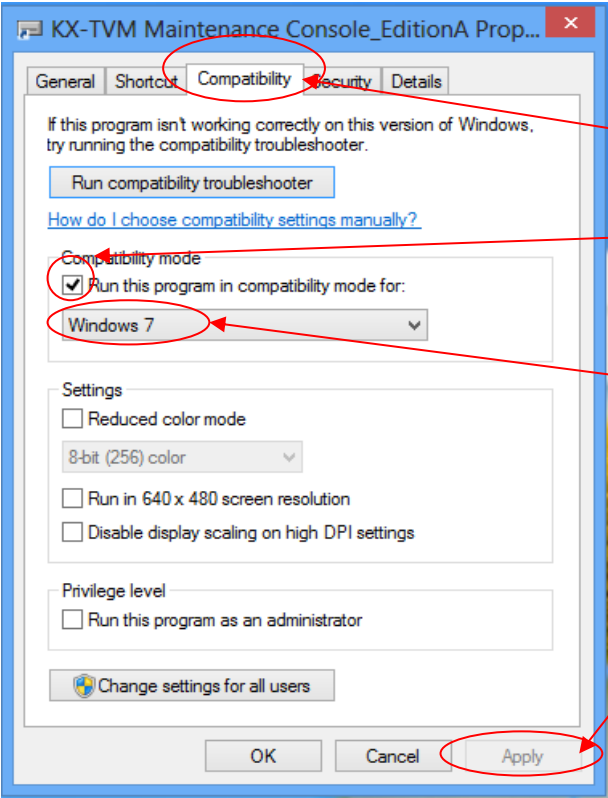
Note :
The above setting can be changed appropriately according to the circumstances of your operating environment.

Appendix-3
Notes on Windows 8 or later for KX-TVM200/50, KX-TVA200/50 PC Programming software
(Compatible mode set)

In case of using PC Programming software on the Windows 8 or later environment, execute the program on the Windows 7 compatible mode.

Windows 7 compatibility mode is set as follow. (This operation sufficient once)

- (1) Install the PC Programming software normally. The program's short cut icon is display on the disk Top. (See the icon below)
- (2) Right click on the program's shortcut icon and click on '**Properties**'.
- (3) Click on the '**Compatibility**' tab. (See the screenshot below)
- (4) Set the '**Windows 7**' compatibility mode.



Select the '**compatibility**' tab

Check the **Run this program in compatibility mode for** box.

Click on the drop down menu arrow and select '**Windows 7**' mode.

Click on the **Apply** and **OK** button.

Once set, the setting is stored.

2. Operability for Office Software

Revision history of this chapter :

2019.5.24 CNS/BCBU

2. Operability for Office Software

Function : UC Pro 2 Cooperation with Microsoft® Outlook®

- Joint data usage
- Outlook® user interface toolbar

Software name	Microsoft® Outlook® 2010	Microsoft® Outlook® 2013	Microsoft® Outlook® 2016	Microsoft® Outlook® 2019
UC Pro 2 - Client	Yes	Yes	Yes	Yes

Function : CA Outlook® toolbar

Software name	Microsoft® Outlook® 2010	Microsoft® Outlook® 2013	Microsoft® Outlook® 2016	Microsoft® Outlook® 2019
CA (Communication Assistant) - Client Version 4.3.3.12 or later	Yes	Yes	Yes	Yes

Note:

The office software (including Microsoft® Outlook®) used to verify the operation has the latest service pack as of April 2019.

Trademarks

Microsoft, Outlook, Office 365, Windows and Windows Server are either registered trademarks or trademarks of Microsoft Corporation in the United States and/or other countries.

All other trademarks identified herein are the property of their respective owners.