

Polycom Sound Station IP 6000/7000 Basic Configuration Help Guide

Table of Contents:

DOCUMENT DESCRIPTION	3
NETWORK DIAGRAM:	3
HOW TO DETERMINE POLYCOM IP ADDRESS, FIRMWARE VERSION & BOOTROM VERSION	4
HOW TO FIND THE IP ADDRESS OF YOUR POLYCOM PHONE:	4
HOW TO FIND OUT THE FIRMWARE VERSION OF YOUR POLYCOM PHONE	4
HOW TO FIND OUT THE CURRENT BOOTROM VERSION RUNNING ON YOUR POLYCOM PHONE.....	4
POLYCOM DEFAULT USERNAME & PASSWORD:.....	4
SETTING POLYCOM SOUND STATION 6000/7000 NETWORK SETTINGS FROM THE TELEPHONE:.....	5
SETTINGS POLYCOM SOUND STATION IP 6000/7000 PHONES FOR REGISTRATION TO NEC SL1100, SV8100 OR SV8300 PBXS	6
FROM THE POLYCOM TELEPHONE	6
FROM THE GUI INTERFACE:	7

Document Description

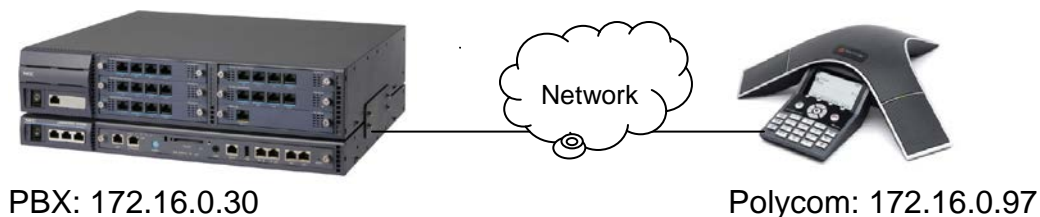
This document is to show the minimum required configuration fields of a Polycom Sound Station IP 6000 or 7000 telephone when being used for NEC SL1100, SV8100, SV8300 or UX5000 PBXs.

The examples and screen shots in this document are using Polycom Firmware version 3.3.1.0933. Some views or entries may be slightly different on other Polycom Firmware versions.

This Help Guide covers manual configurations on a per phone basis. Boot Server configurations for more detailed changes or for multiple phone set ups are not covered in this help guide.

Network Diagram:

In the examples and screen shots in this document the network (Local LAN) is configured as shown below with no DHCP server in place



How to determine Polycom IP Address, Firmware Version & BootROM Version

How to find the IP address of your Polycom phone:

To find out the IP address of your Polycom phone, please follow the following steps:

1. On the Polycom Phone press the “Menu” Button.
2. Scroll to the “Status...” Menu item and press Select
3. Scroll to the “Platform...” menu item and press select
4. Scroll to the “Phone...” menu item and press select
5. Scroll down see your phone IP address on the screen similar to IP:xxx.xxx.xxx.xxx

How to find out the firmware version of your Polycom phone

How to find out the current firmware version running on your Polycom phone, please follow the following steps:

1. On the Polycom phone press the “Menu” Button
2. Scroll to the “Status...” menu item and press Select
3. Scroll to the “Platform...” menu item and press select
4. Scroll to the “Application...” menu item and press select
5. Scroll to the “Main...” menu item and press select
6. You should see your firmware version on the screen similar to version: 3.1.2.0392

How to find out the current BootROM version running on your Polycom phone

To find out the current BootROM running on your Polycom Phone please follow the following steps:

1. On the Polycom phone press the “Menu...” Button
2. Scroll to the “Status...” menu item and press Select
3. Scroll to the “Platform...” menu item and press Select
4. Scroll to the “Phone...” menu item and press Select
5. Scroll down to the bottom of the page to see something similar to ‘BootROM:4.1.2.0037’

Polycom Default Username & Password:

Default Username is: Polycom

Default Password is: 456

Setting Polycom Sound Station 6000/7000 Network Settings from the Telephone:

From the Polycom phone:

- 1) Press Menu,
 3. Settings,
 2. Advanced, Password = 456 press Enter.
 1. Admin Settings
 1. Network Settings

From Network settings:

You can arrow down to each category. Once you have the item highlighted you would like to change press select or edit, and enter your change or use the arrows to toggle through the options. Once you have the change entered press select or Ok to return back to the Network settings Menu.

DHCP: Press Select or Edit while this is highlighted then use the up or down arrows to switch between DHCP enable or disable. Press Select after making your change to return to the Network Settings Menu. If no change is needed press the down arrow to go to the next field.

Phone IP Address: Displays the phone's current IP Address. Press the select key to change this field. Once you have pressed select press then enter the IP address you want. Use the arrows to move to the next octet. Press select once your entry is made, to return to the Network Settings Menu.

Subnet Mask: Displays the phone's current Subnet Mask. Press the select key to change this field. Once you have pressed select press then enter the IP address you want. Use the arrows to move to the next octet. Press select once your entry is made, to return to the Network Settings Menu.

IP Gateway: Displays the phone's current Default Gateway. Press the select key to change this field. Once you have pressed select press then enter the IP address you want. Use the arrows to move to the next octet. Press select once your entry is made, to return to the Network Settings Menu.

Server Menu: This field is where you set where the phone's Boot Server is. Leave this field default unless you are setting up a Boot Server for this site that will contain all the phone's configuration, firmware, and BootROM files.

Once all the Network settings have been made, press Exit, then press 2 to select Save Configuration. This will reboot the phone, once the phone reboots the new IP settings will be in place.

Settings Polycom Sound Station IP 6000/7000 phones for Registration to NEC SL1100, SV8100 or SV8300 PBXs

- 1) Confirm or assign the IP address of the Polycom Telephone. Once the Polycom phone is on the proper Subnet Mask with the system you can make the following settings from either the Polycom phone or from the phone's GUI interface:

From the Polycom Telephone:

- 1) Press Menu, 3 for Settings, 2 for Advanced, enter password 456, and then press Enter.
- 2) Press 1 for Admin Settings
- 3) Press 2 for Line Configuration...
- 4) From the Line Configuration menu arrow down to Line: ... then press the Select Key

Arrow down to through the following settings:

Display Name: Arrow past this leaving it Blank (This is used on NEC systems)

Address: Press Select or Edit, then enter the extension number this phone is to be, then press Ok or Select. Then arrow down to Server1:

Server1:... Press select, from this field you will set the IP address of the PBX, as well as the UDP port it uses:

Server1

Address: Press Edit or Select, then press the 1/A/a soft key to chose Numeric entries, then type in the IP address of the PBX. You can arrow over to each octet or press the * key to insert a dot between octets. Once the IP address is entered press Ok or Select then arrow down to Port.

Port: Press Select or Edit, then enter 5070, then press Ok or Select, then arrow to Transport (Register should be set to yes.)

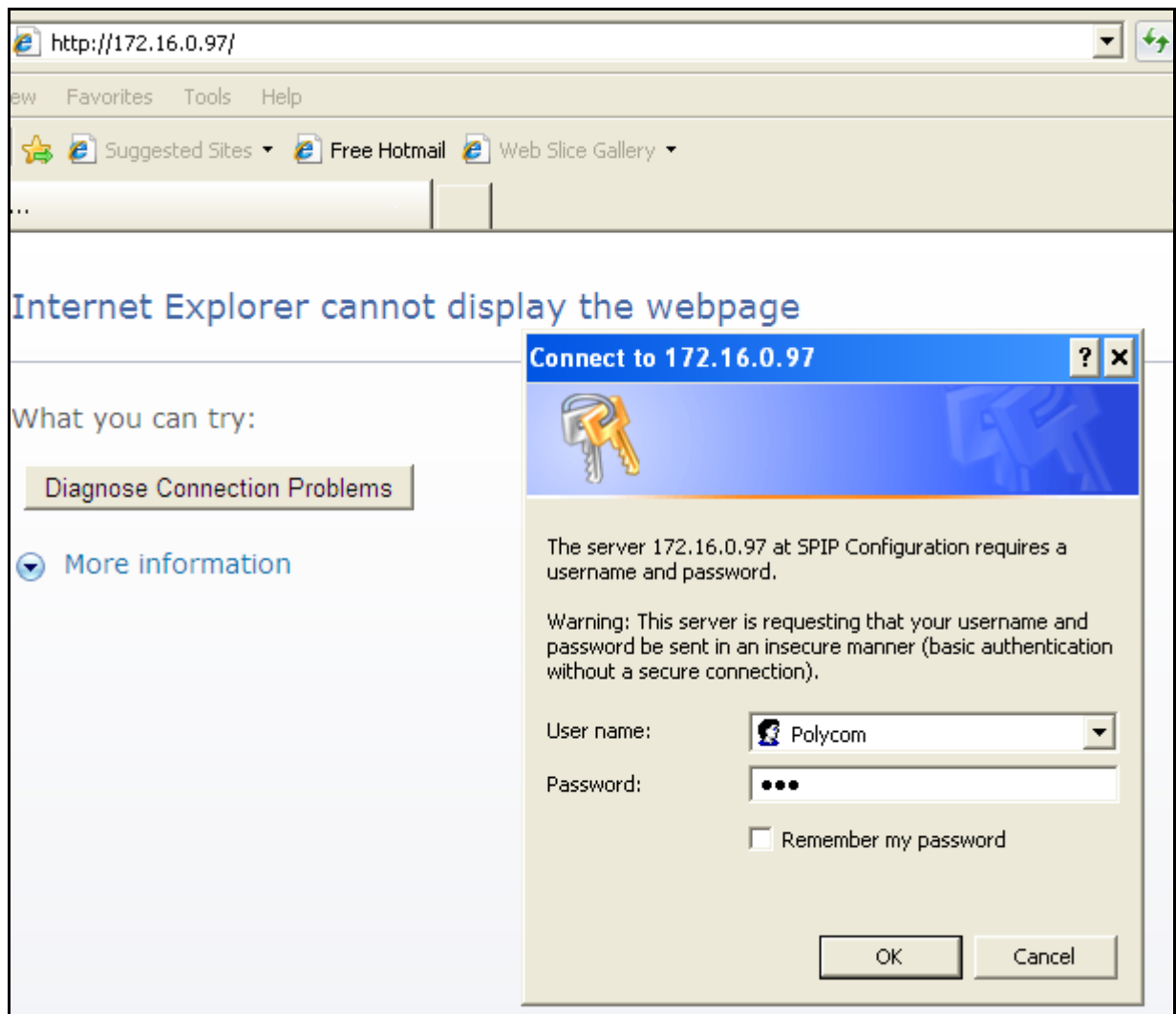
Transport: Press Select or Edit, then using the Arrows toggle to UDP only. Then press Ok or Select.

Next press the Back Key until prompted to Save Configuration, then press ok or Select, then back or exit until the phone is back to the idle screen.

Your phone should now be registered to the system.

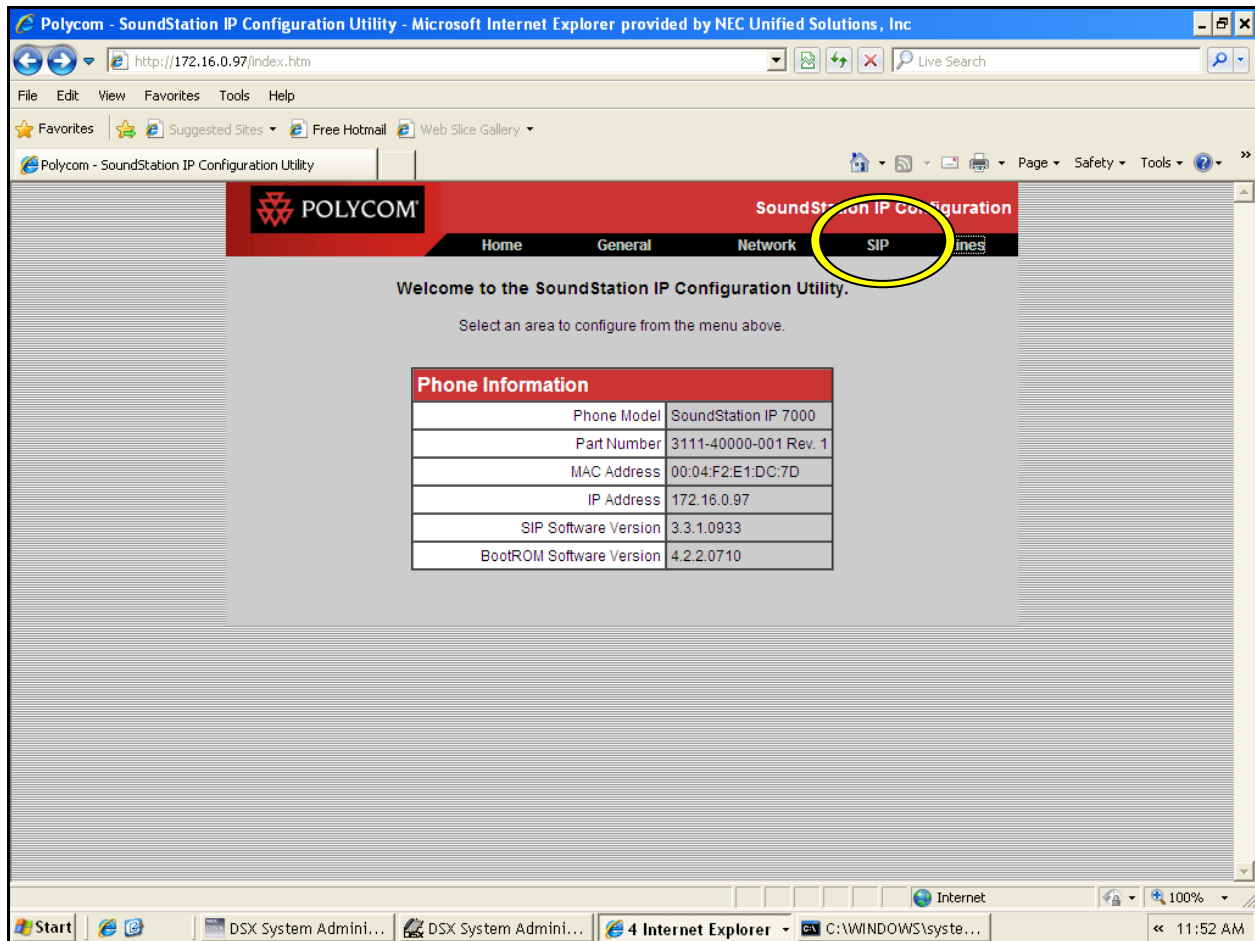
From the GUI Interface:

- 1) From a laptop or PC on the same LAN as the Polycom phone & the PBX pull up a web browser and type in the Polycom Phone's IP address. You should see a login screen similar to this one:



The **User name** is: Polycom the **Password** is: 456

- 2) Next you should see the Main Screen: (Note this screen also shows you the current Firmware, & BootROM versions as well as the Model of the Polycom Phone.)



Next click on Lines, and you should see the following screen:

Line Parameters:
Line 1

Line 1

Identification

Display Name

Address 329

Authentication User ID

Authentication Password

Label 329

Type ☒ Private ☐ Shared

Third Party Name

Number Of Line Keys 1

Calls Per Line 24

Server 1

Address 172.16.0.30

Port 5070

Transport UDPonly

Once the above settings are entered click on Submit at the bottom of the screen not pictured here.

Note:

- 1) In some older Firmware versions the extension number is entered into User ID.
- 2) In some Firmware versions the phone reboots after submitting changes on each page. This example is taken from Version 3.3.1 and reboot did not happen automatically and was not needed.