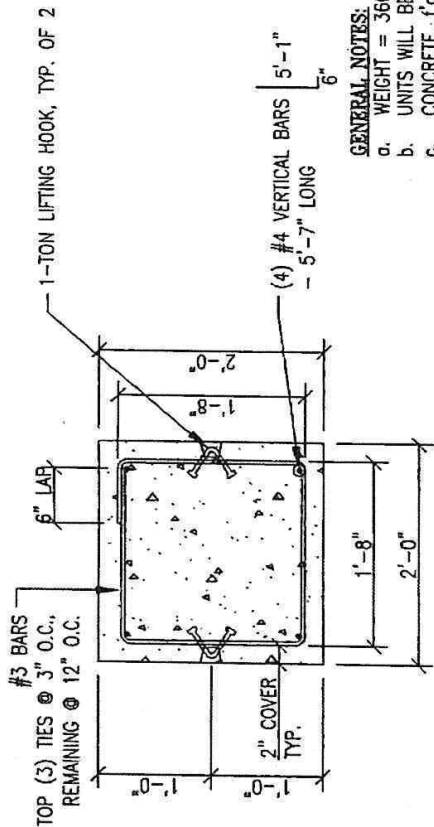
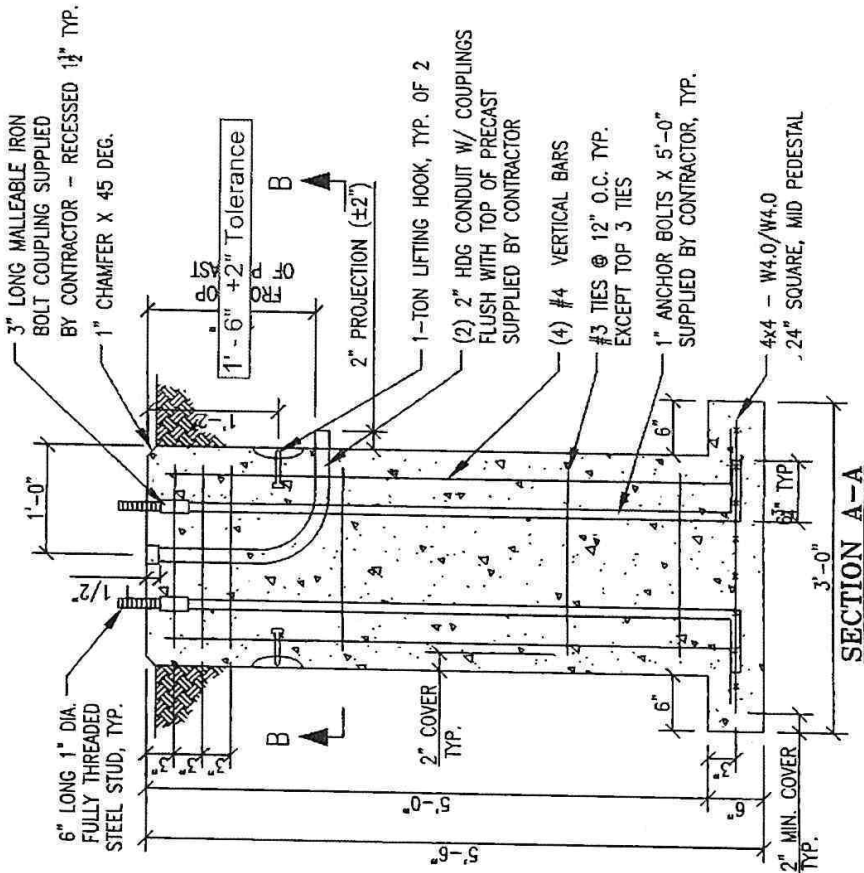


PLAN VIEW



SECTION B-B

\*CONDUIT & ANCHOR BOLTS NOT SHOWN

GENERAL NOTES:

- WEIGHT = 3600 LBS
- UNITS WILL BE FABRICATED IN ACCORDANCE TO 723-45
- CONCRETE,  $f'_c = 3500$  PSI @ 7 DAYS
- AIR CONTENT BETWEEN 5.0% - 9.0%
- REINFORCING COVER SHALL BE MAINTAINED BY USE OF PLASTIC CHAIRS OR BOLSTERS
- CURING PER SEC. 704-3. ANTICIPATED CURING IS A NYSDOT APPROVED MEMBRANE CURING COMPOUND, MEETING THE REQUIREMENTS OF NYSDOT STANDARD SPECIFICATION 711-05
- UNITS SHALL BE MARKED ON THE SIDE:

DATE:

ID #:

- REBAR IS ASTM A-165 GRADE 60 MEETING 709-01
- WELDED WIRE MESH - ASTM A-185 MEETING 709-02
- TOLERANCES PER 704-03 & AS FOLLOWS:

UNIT DIMENSION

REINFORCING STEEL

COVER OVER REINFORCING

LIFTER LOCATION

HORIZONTAL LEG

OF ANCHOR BOLT

- ALL HARDWARE SHALL BE SUPPLIED BY CONTRACTOR MEETING or approved by NYCDOT DSL

FOUNDATION SHALL BE POURED MONOLITHICALLY

- REINFORCING COVER SHALL BE 2" UNLESS NOTED OTHERWISE

NOTES FOR CONTRACTOR

- TO ASSURE ADEQUATE BEARING SURFACE, THE FOUNDATION SHALL BE INSTALLED ON UNDISTURBED GROUND OR ON 6" DEEP LAYER OF SAND.
- BACKFILL SHALL BE THOROUGHLY COMPACTED TO 1" FROM TOP. FILL 1" SPACE WITH CEMENT SLOPED FOR DRAINAGE.
- GROUND BRUSHING FURNISHED AND INSTALLED BY CONTRACTOR INSTALLING LAMPPOST.
- GROUNDING SHALL BE AS PER NYCDOT STREET LIGHTING STANDARD DRAWING H-5019.
- PLACEMENT OF PRECAST FOUNDATIONS SHALL BE TO SPECIFICATION 670, SECTION 670-3.04 FOUNDATIONS.

REVISIONS

No.	Description	Date
1	Changed conduit depth	3/6/19
2	Added clearer plan view	3/20/19
& included comments from reviewer		