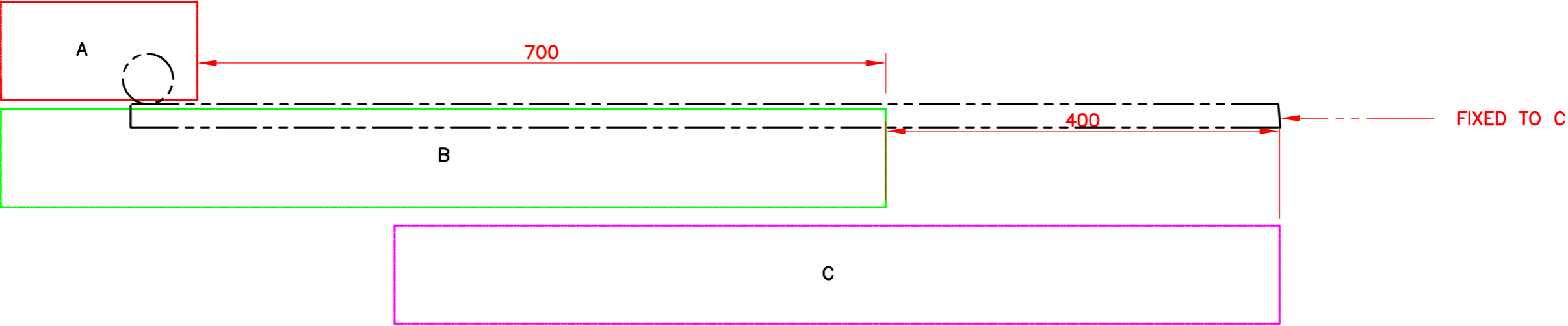
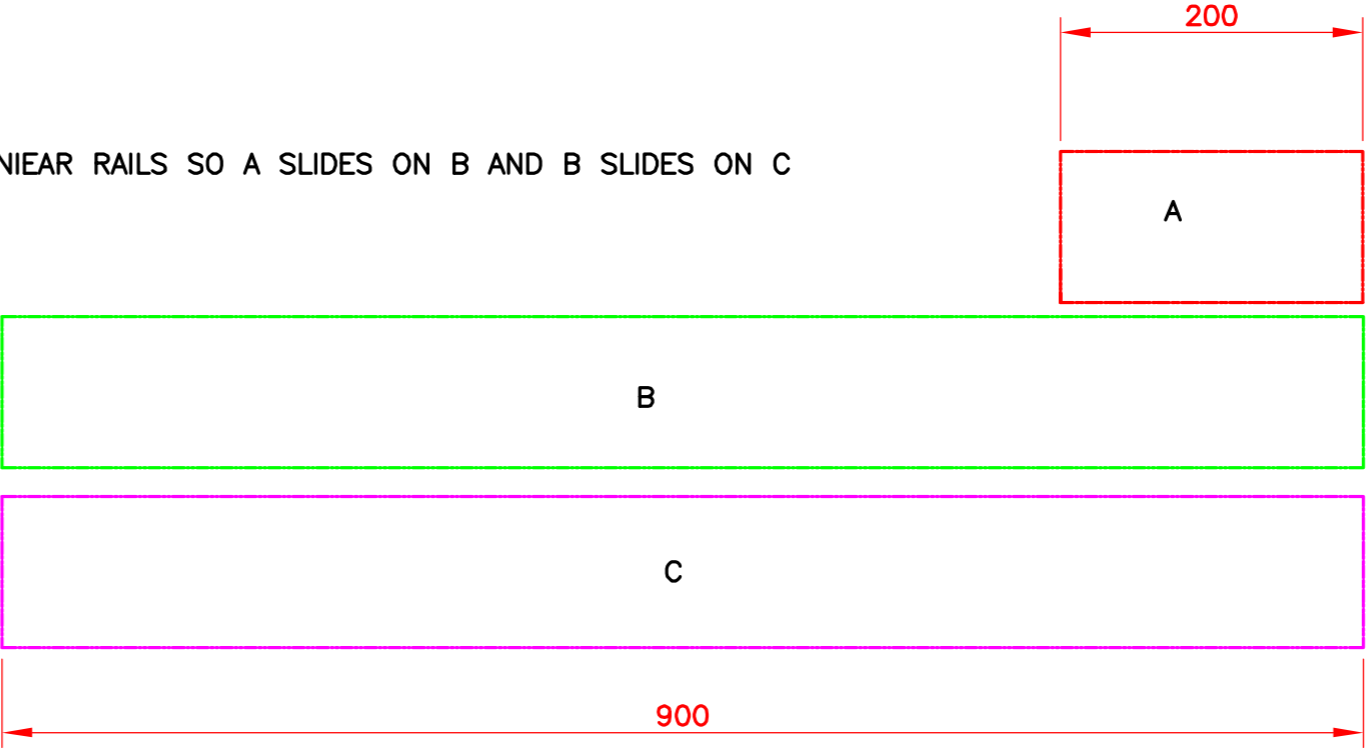


3 ITEMS  
START AS SHOWN  
ALL ITEMS ARE ON LINEAR RAILS SO A SLIDES ON B AND B SLIDES ON C



FINISHED POSITIONS  
A AND B SLIDE 400MM ON C . MEANWHILE A IS SLIDING ON B 700MM . THESE WILL ALL MOVE AT THE SAME TIME BUT A OBVIOUSLY MOVES FASTER THAN B . THOUGHT RACK AND PINION WOULD SUIT BUT HOW AND WHAT GEARS . . POSITION OF RACK AND PINIONS SHOWN ARE WHERE I THINK THEY MAY WORK.