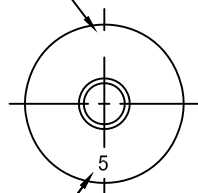




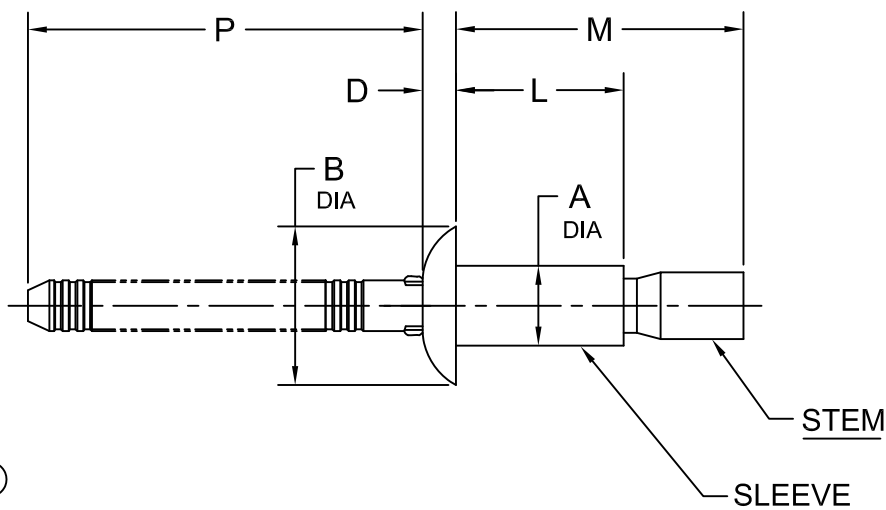
PRINTED COPIES OF THIS DOCUMENT ARE FOR "REFERENCE" ONLY. CURRENT REVISIONS ARE AVAILABLE ON-LINE.

HEAD MARKINGS

MANUFACTURER'S
IDENTIFICATION ⑤



GRIP IDENTIFICATION ③



DIA DASH NO.	NOMINAL DIA	INCH DIMENSIONS					RECOMMENDED HOLE SIZE		
		A		B	D	P			
		MAX	MIN	±.005	+0.005 -.000	MAX	MIN	MAX	
-04	1/8	.129	.125	.250	.054	1.15	.129	.132	
-05	5/32	.160	.156	.312	.067	1.25	.160	.164	
-06	3/16	.192	.188	.375	.080	1.25	.192	.196	
MILLIMETER DIMENSIONS ②									
-04	3.2	3,27	3,17	6,35	1,37	29,2	3,28	3,35	
-05	4.0	4,06	3,96	7,92	1,70	31,8	4,06	4,17	
-06	4.8	4,88	4,77	9,53	2,03	31,8	4,88	4,98	

MATERIAL ④		FINISH	
SLEEVE	STEM	SLEEVE	STEM
2014A PER BS EN 2100	7075 PER QQ-A-430 OR SAE AMS-QQ-A-225/9	CLEAR ANODIZE PER DEF STAN 03-24 OR SAE AMS-A-8625	YELLOW ANODIZE PER DEF STAN 03-24 OR SAE AMS-A-8625

NOTICE : ALL DIMENSIONS ARE IN INCHES AND APPLY AFTER FINISH AND BEFORE LUBRICATION UNLESS OTHERWISE SPECIFIED.

WARNING : FASTENERS MAY NOT PERFORM PROPERLY IF ALTERED FROM THE MANUFACTURER'S AS-SHIPPED CONDITION OR INSTALLED IN CONDITIONS OTHER THAN SPECIFIED HEREIN.

PROCUREMENT SPECIFICATION :

PS-MBC-4001

NAS 523 CODE :

CHERRY® MBC® RIVET
ALUMINUM ALLOY
UNIVERSAL HEAD

SHEET 1 OF 2

ISSUE 10-08-01

REV. N 9-12-12

PART NUMBER

4801



DIA/GRIP DASH NO.	③ GRIP IDENT	INCH DIMENSIONS				MILLIMETER DIMENSIONS ②			
		GRIP RANGE		L	M	GRIP RANGE		L	M
		MIN	MAX	MAX	MAX	MIN	MAX	MAX	MAX
-0405	1	.020	.078	.186	.35	0,51	1,98	4,72	8,9
-0407	2	.047	.141	.249	.45	1,19	3,58	6,32	11,5
-0409	3	.109	.203	.311	.58	2,77	5,16	7,90	14,8
-0411	4	.172	.266	.374	.69	4,37	6,76	9,50	17,6
-0413	5	.234	.328	.436	.80	5,94	8,33	11,07	20,4
-0415	6	.297	.391	.499	.91	7,54	9,93	12,67	23,2
-0506	1	.020	.078	.219	.38	0,51	1,98	5,56	9,7
-0508	2	.047	.141	.280	.51	1,19	3,58	7,11	13,0
-0510	3	.109	.203	.342	.60	2,77	5,16	8,69	15,3
-0512	4	.172	.266	.405	.71	4,37	6,76	10,29	18,1
-0514	5	.234	.328	.467	.82	5,94	8,33	11,86	20,9
-0516	6	.297	.391	.530	.95	7,54	9,93	13,46	24,2
-0518	7	.359	.453	.592	1.09	9,12	11,51	15,04	27,7
-0520	8	.422	.516	.655	1.19	10,72	13,11	16,64	30,3
-0607	1	.020	.078	.249	.43	0,51	1,98	6,32	11,0
-0609	2	.047	.141	.311	.54	1,19	3,58	7,90	13,8
-0611	3	.109	.203	.374	.66	2,77	5,16	9,50	16,8
-0613	4	.172	.266	.436	.78	4,37	6,76	11,07	19,7
-0615	5	.234	.328	.499	.90	5,94	8,33	12,67	22,9
-0617	6	.297	.391	.561	1.01	7,54	9,93	14,25	25,7
-0619	7	.359	.453	.623	1.12	9,12	11,51	15,82	28,5
-0621	8	.422	.516	.685	1.27	10,72	13,11	17,40	32,1

NOTES :

1. MBC® RIVETS ARE SUPPLIED LUBRICATED. THEY ARE TO BE USED IN THIS CONDITION AND SHALL NOT BE DEGREASED PRIOR TO USE.

② METRIC DIMENSIONS ARE FOR REFERENCE ONLY.

③ GRIP IDENTIFICATION PER NAS1720.

④ CHEMICAL COMPOSITION ONLY.

⑤ HEAD MARKING MAY BE ↑ OR ◇

PART NUMBER EXAMPLE :

4801 -0508
 └───┬───┬───
 └───┬───┬─── GRIP DASH NO.
 └───┬───┬─── DIAMETER DASH NO.
 └───┬───┬─── BASIC PART NO.
 (MATERIAL, HEAD STYLE)

SHEET 2 OF 2		PART NUMBER	
ISSUE	10-08-01	4801	
REV.	N 9-12-12		



STANDARDS PAGE REVISION LOG

REV LTR	DATE	DCR NUMBER	REVISION DESCRIPTION	COMP. BY
N	9-12-12	12-0921	REVISED CALLOUT OF "B" AND "D" DIMENSIONS AND TOLERANCES	CM