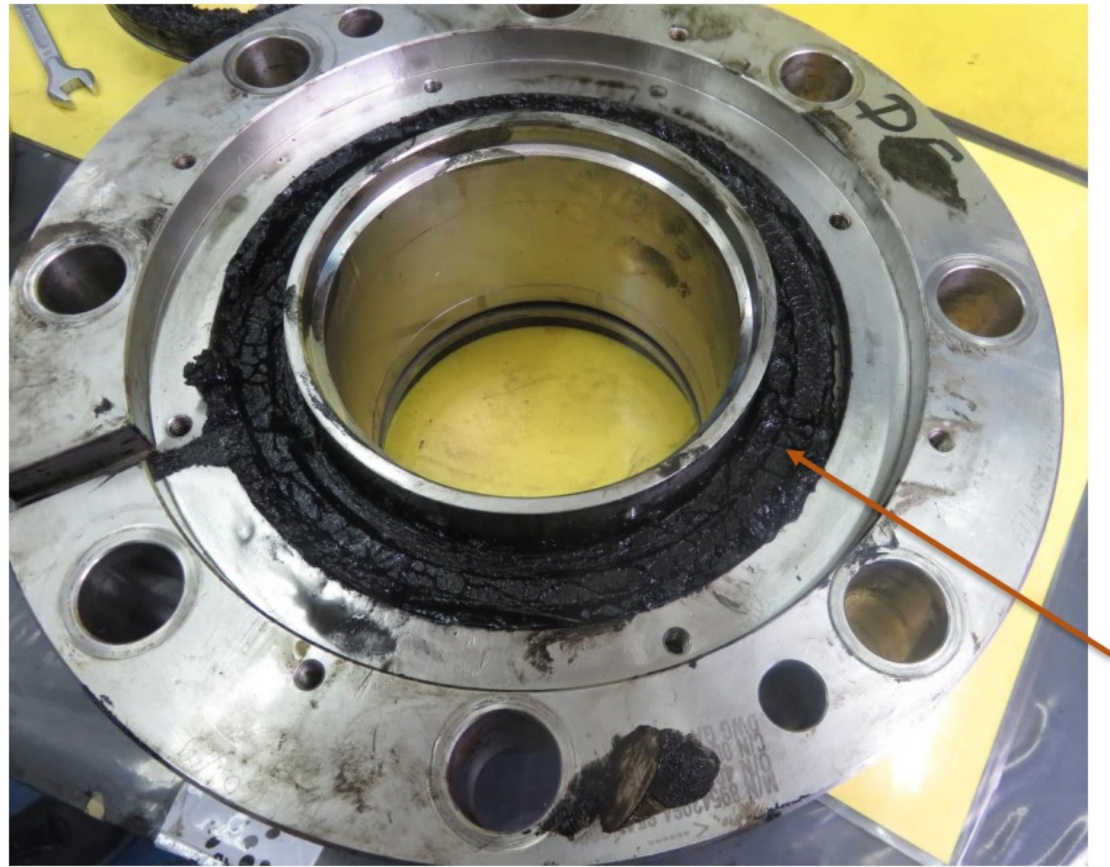


Locking collar (Pos # 17) was full of black sludge.

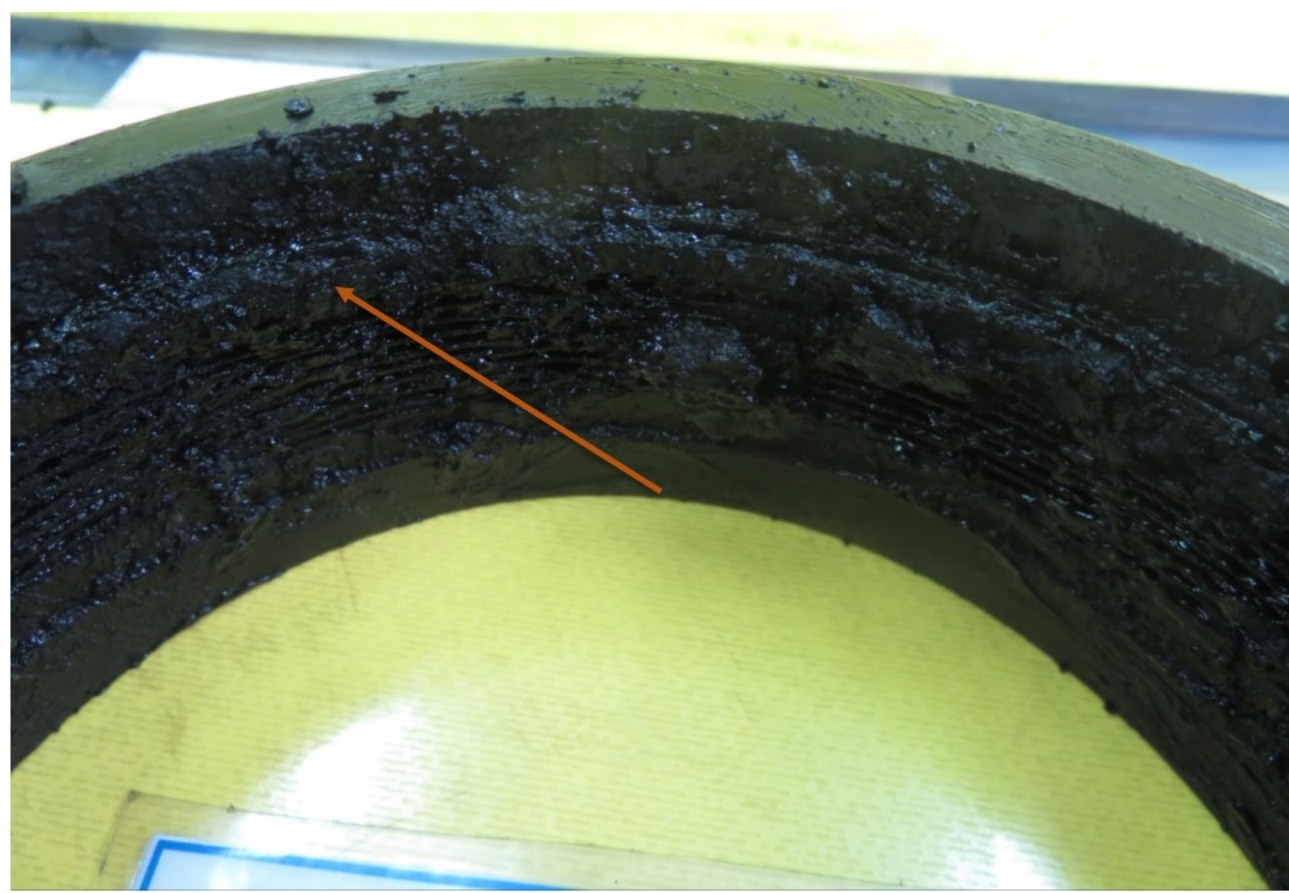


Outer Gland (Pos # 14) is fully covered with black sludge.





Outboard bellows (Pos # 6) observed stuck on the sleeve OD.



Outboard bellows (Pos # 6) ID is having thick sludge depositions

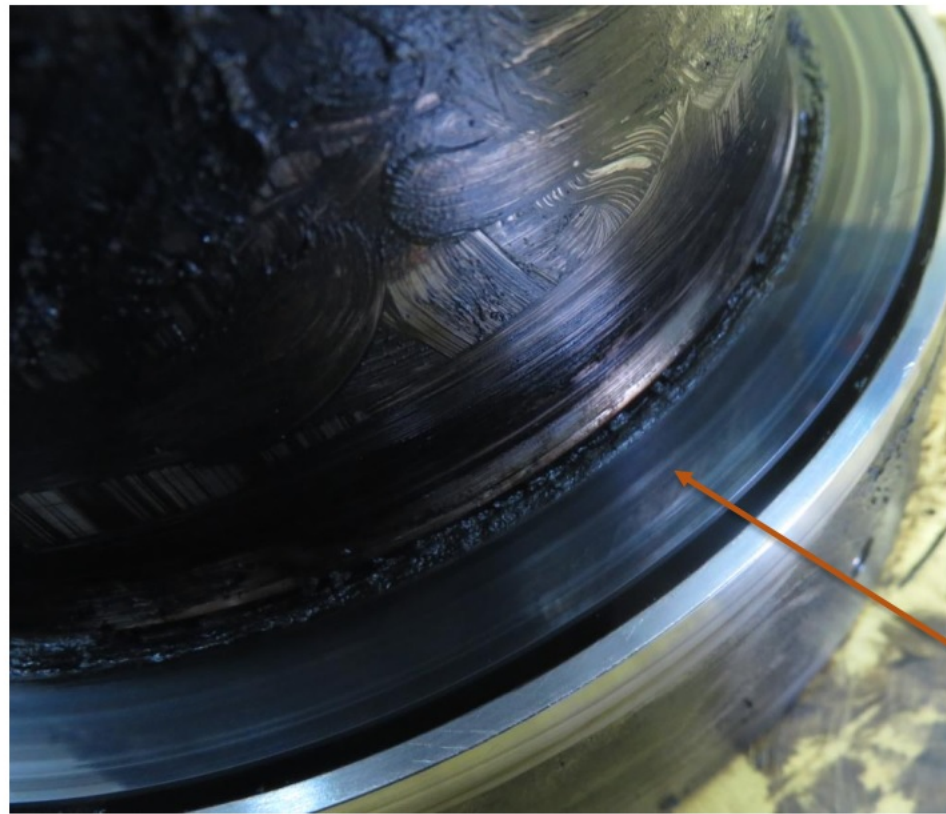


Sleeve (Pos # 12) OD under the outboard bellows area is covered with thick layer of sludge deposits.





OB Mating ring (Pos # 8) ID area is full of hard coke deposits.



OB Mating ring (Pos # 8) face shows shiny wear marks.



Inboard bellows (Pos # 1) shows hard debris.



IB Mating ring (Pos # 4) shows gramophonic wear marks.