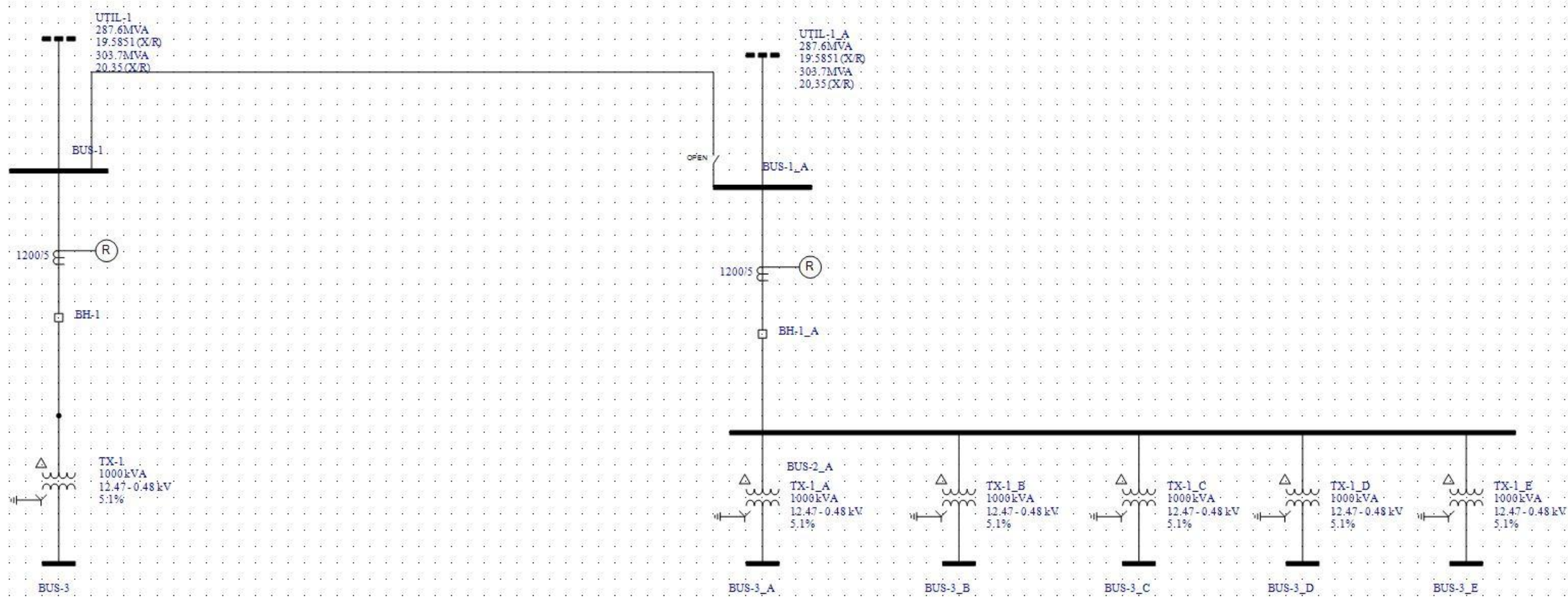


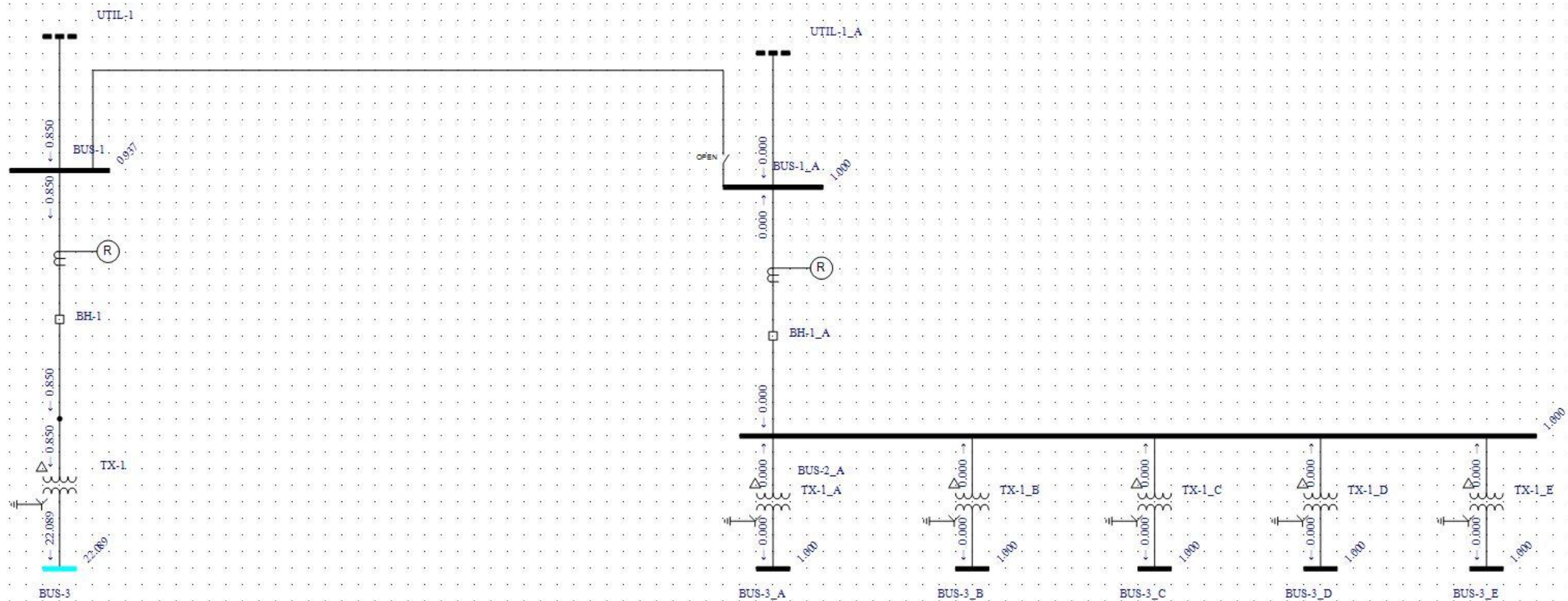
Short circuit current in the primary
with the secondary faulted
(BUS-3) = 850A

Therefore set the Relay
instantaneous to $1.1 \times 850 =$
935A for fault protection



Short circuit current in the primary
with the secondary faulted
(BUS-3) = 850A

Therefore set the Relay
instantaneous to $1.1 \times 850 =$
935A for fault protection



Short circuit current in the primary
with the secondary faulted
(BUS-3) = 850A

Therefore set the Relay
instantaneous to $1.1 \times 850 =$
935A for fault protection

