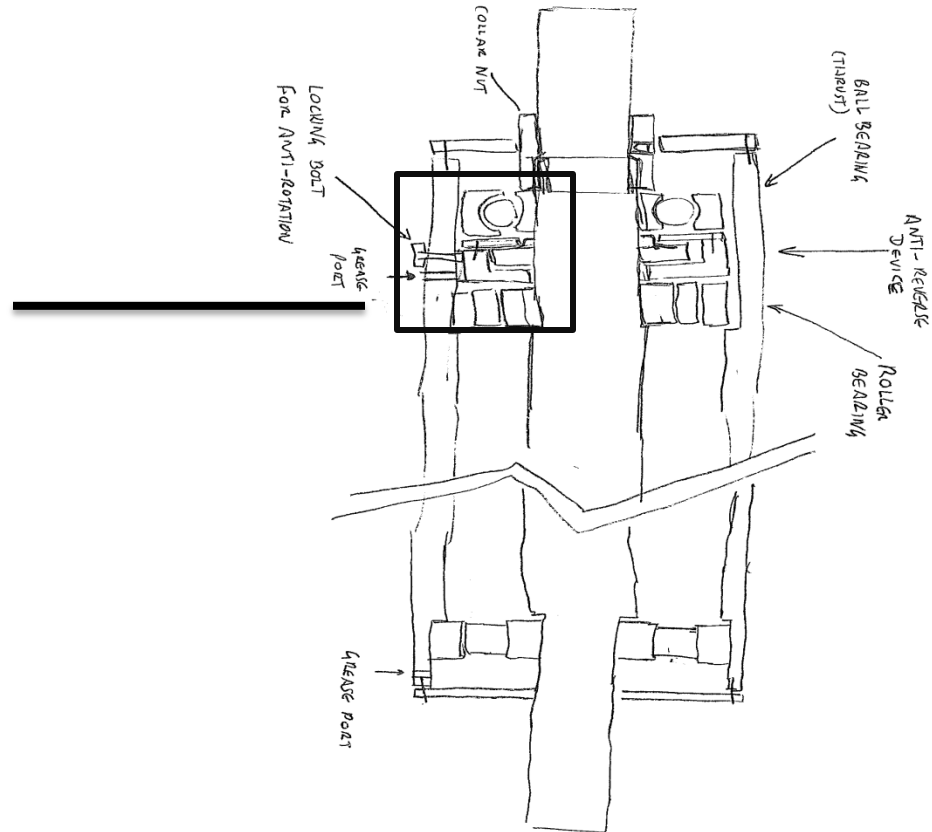
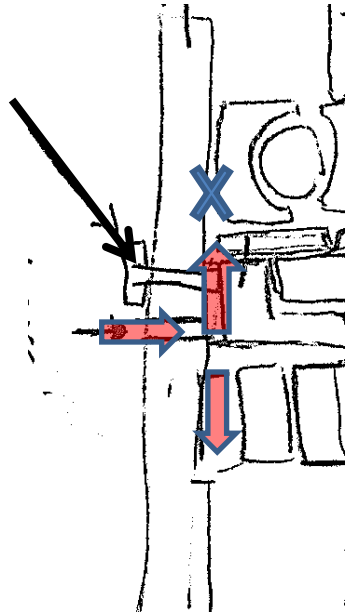


Anti-Rotation
Locking Bolt
restricted the
grease
through ball
bearing



Rough sketch of bearing arrangement in shaft based on strip down of failed unit (anti-rotation device may be shown reversed)

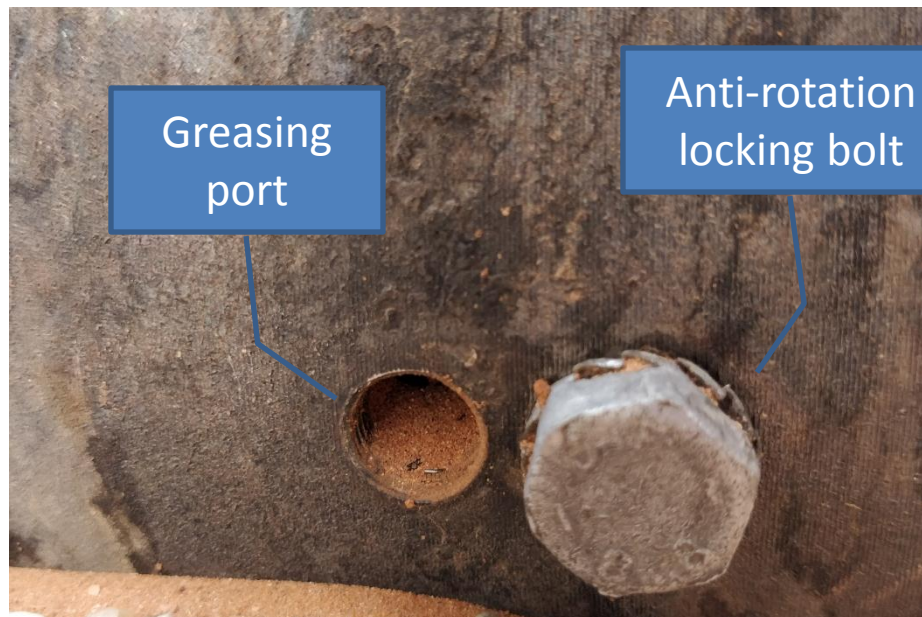
Concern is that the grease cannot get to ball bearing due to presence of anti-rotation device and the locking bolt for the anti-rotation device, which largely fills the slot where it locks the outer part of the anti-rotation device.

Fan end of monobloc



Greasing port

Anti-rotation locking bolt



Anti-rotation device



Grease path to roller bearing restricted by locking bolt

