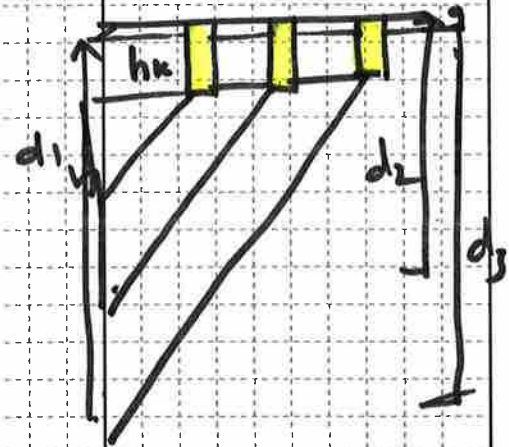
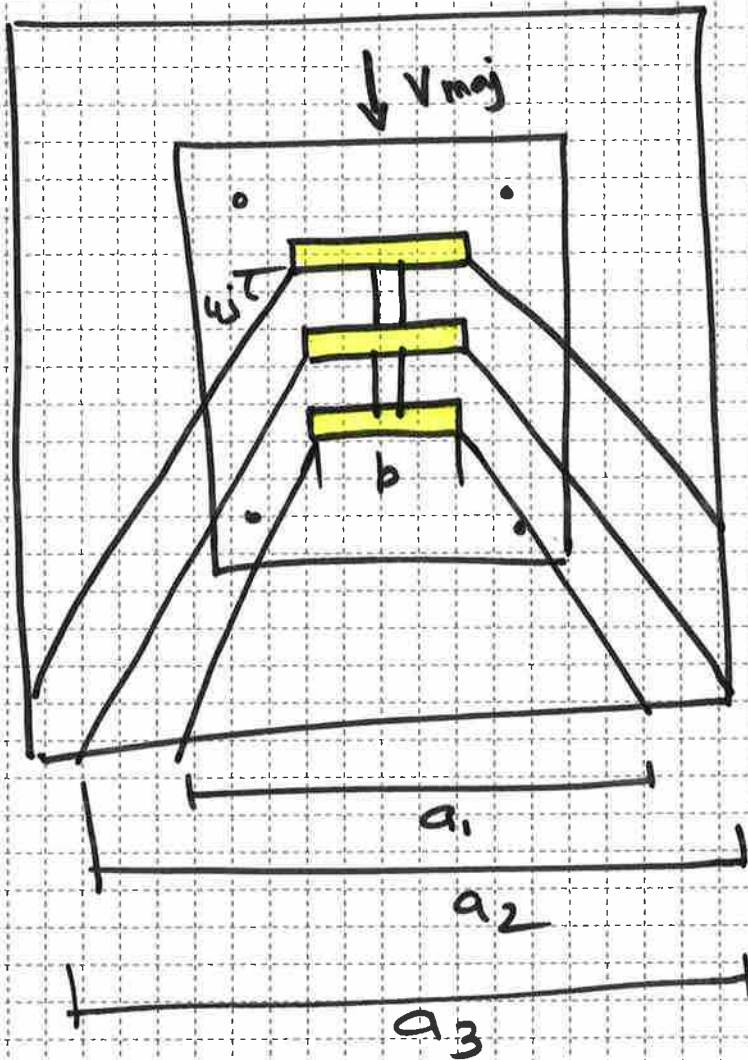


Sect. Ref.:

ACI 349-01 - multiple shearkey

Notes:

Projected area

$$A = \left( a_1 d_1 - b \times h_k + \right. \\ \left. a_2 d_2 - b \times h_k \right. \\ \left. a_3 d_3 - b \times h_k \right)$$

$$\phi P_{max} = 4 \times \phi \times \sqrt{f_c} \cdot A$$