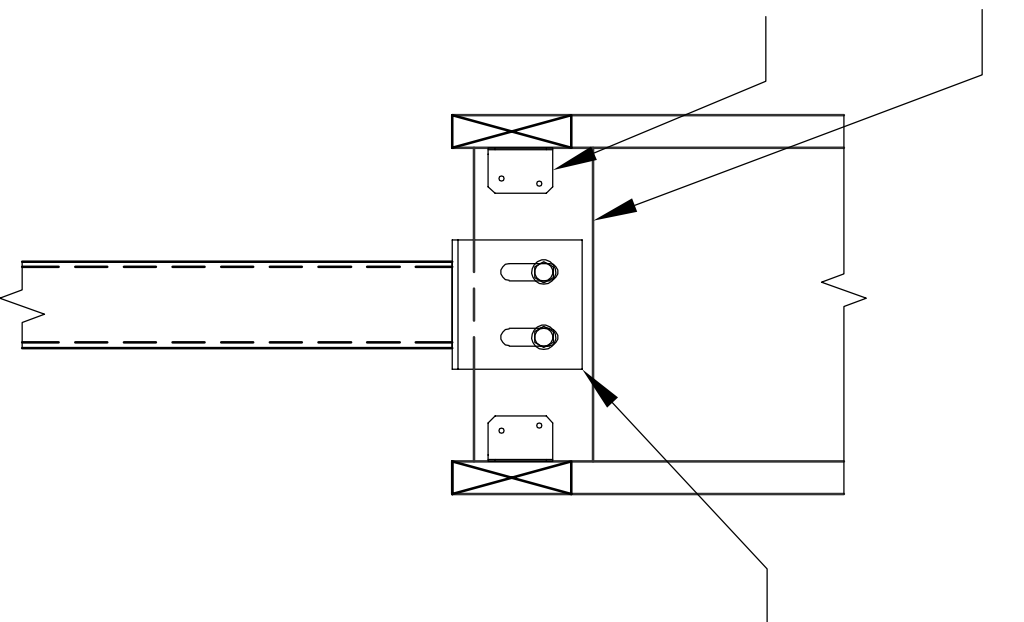


(2)-2x6 between trusses

Simpson ML23Z
angle @ each end



L6x3x $\frac{1}{4}$ "x0'-6"
w/ (2)-13/16 \varnothing x1 $\frac{7}{8}$ "
slotted holes for $\frac{3}{4}$ " \varnothing
bolts. Provide teflon
pad between wood and
angle. Hand tighten and
double nut to prevent backing
off