

# 6. Port Mirroring (1/4)

## Step 1. Configuring PC settings

### **Important Information**

- (1) The monitor PC and the monitored IPCMPR card must belong to the same layer-2 broadcast domain (It is not possible to monitor remotely with this function).
- (2) The monitor PC needs a static IP address. Please set the monitor PC as shown below.
  - IP address (FIXED)
  - Subnet mask (same as IPCMPR's)
- (3) If you require a static IP address, please ask your network administrator.

### **PC needs FIXED IP address.**

- Assign a static IP address or create a DHCP reservation with NO Lease expiration on the DHCP server

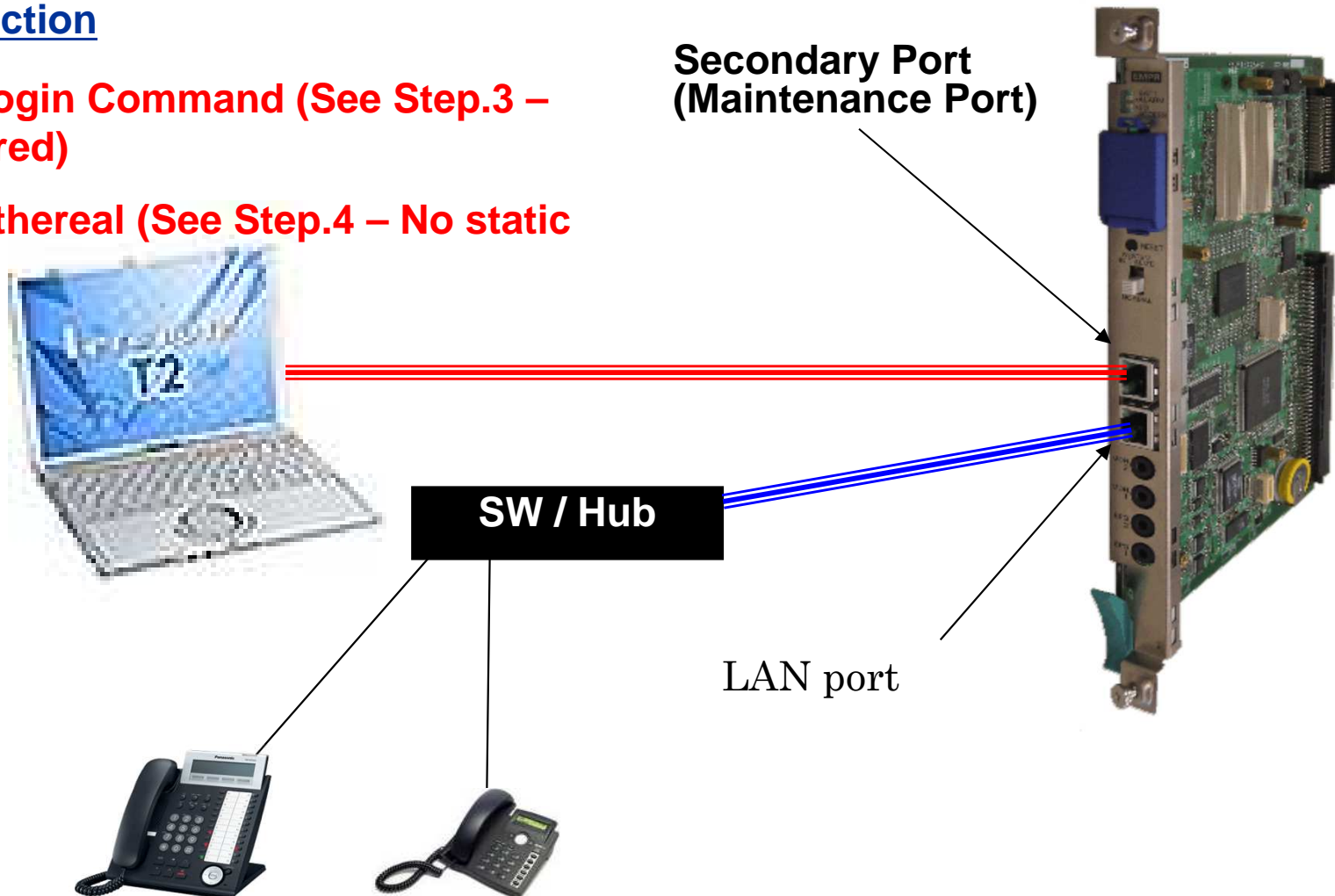


# 6. Port Mirroring (2/4)

## Step 2. Connection

**PC used for Login Command (See Step.3 – static IP required)**

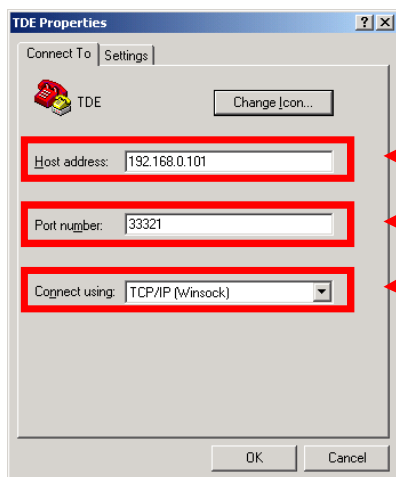
**PC used for Ethereal (See Step.4 – No static IP required)**



# 6. Port Mirroring (3/4)

## Step.3. Set maintenance LAN port to packet mirroring mode

### (1) Set Hyper Terminal property (From PC for login command)

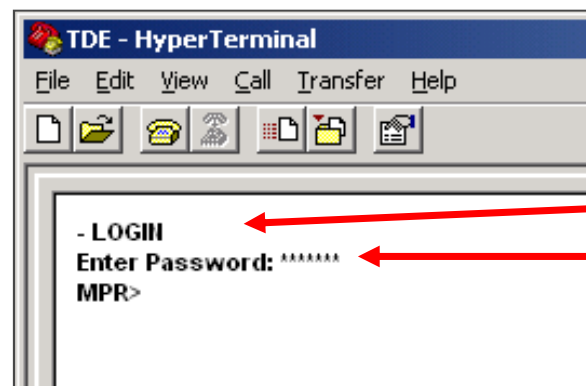


2) ICPMPR IP Address

3) Login Port = 33321(Default)

1) Select TCP/IP

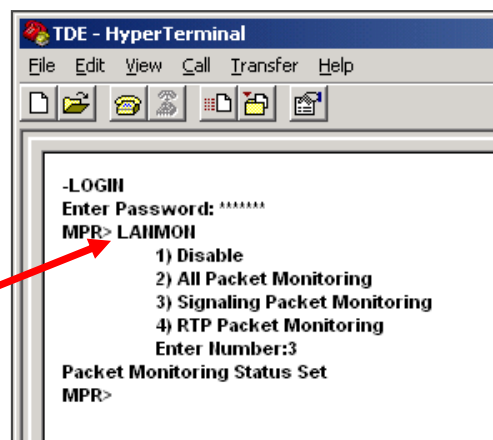
### (2) Start Hyper Terminal



Enter "LOGIN"

Enter password

### (3) Set LANMON command

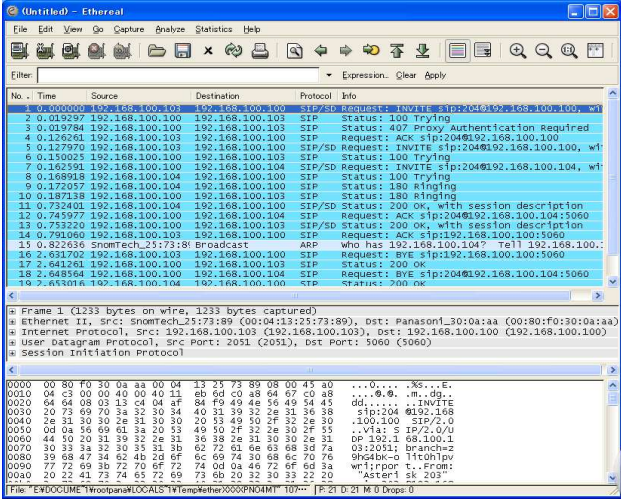
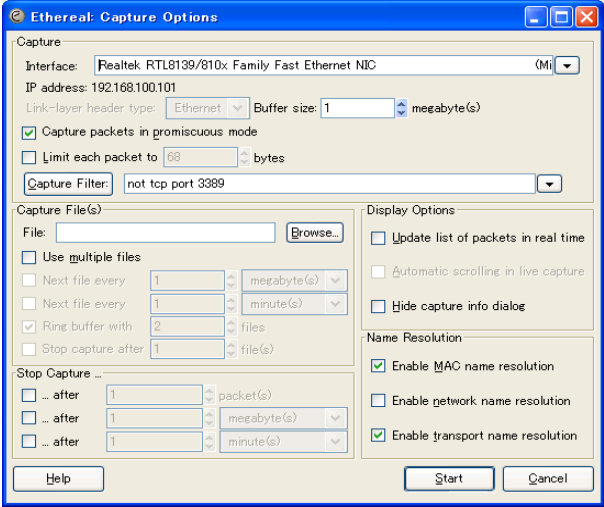


Enter "LANMON"  
to select mode

The port mirror configuration  
is NOT saved on restart of  
the TDE.

## 6. Port Mirroring (4/4)

## Step 4. Start Ethereum



## Step 5. Duplicate the problem

## Step 6. Send Ethereal capture data for analysis at PCC/PCCUK