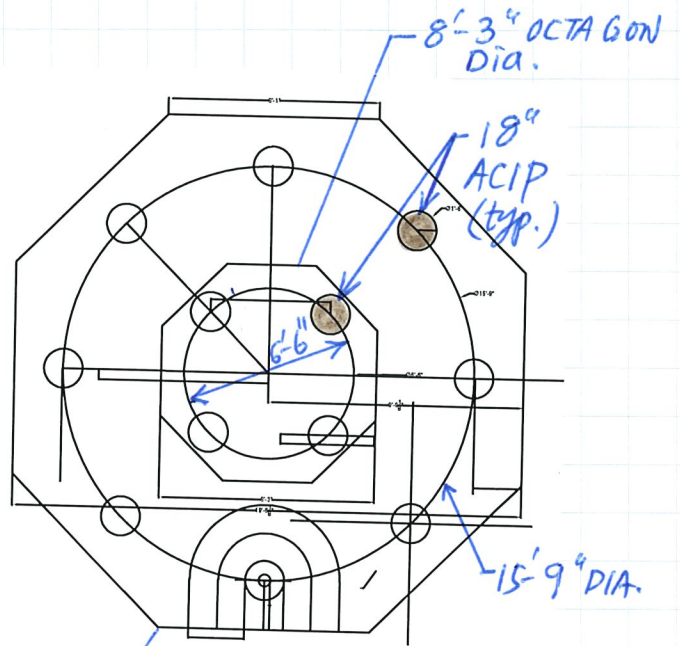


ELEV.



19'-6 $\frac{1}{8}$ " DIA.
DIA. OCTAGON
 $A \approx 315.49 \text{ ft}^2$
Length of side = 8'-1"

ACIP = Auger cast piles

5.2.1 3-D VIEW OF THE PEDESTAL AND FOOTING

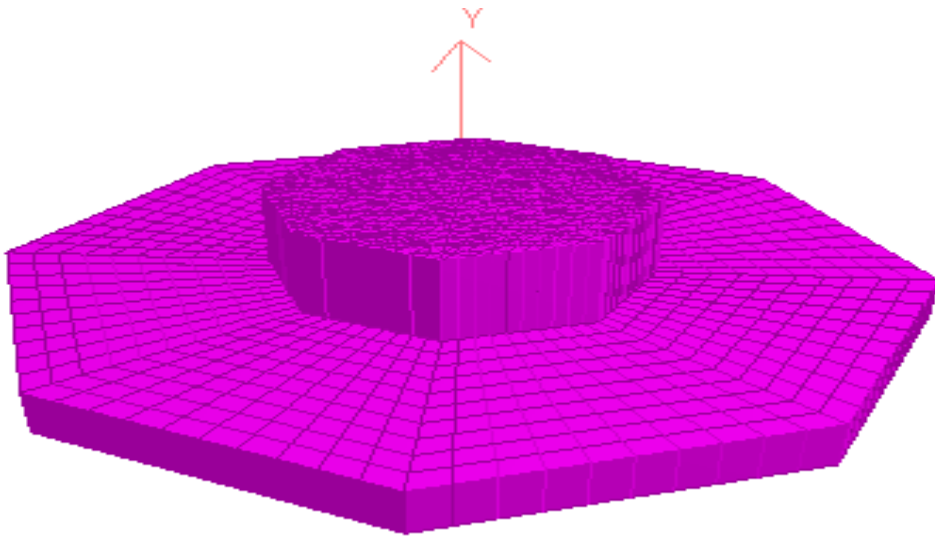


Fig.3 STAAD model of the pedestal and footing

5.2.2 STAAD GENERATED MESH OF PEDESTAL AND FOOTING

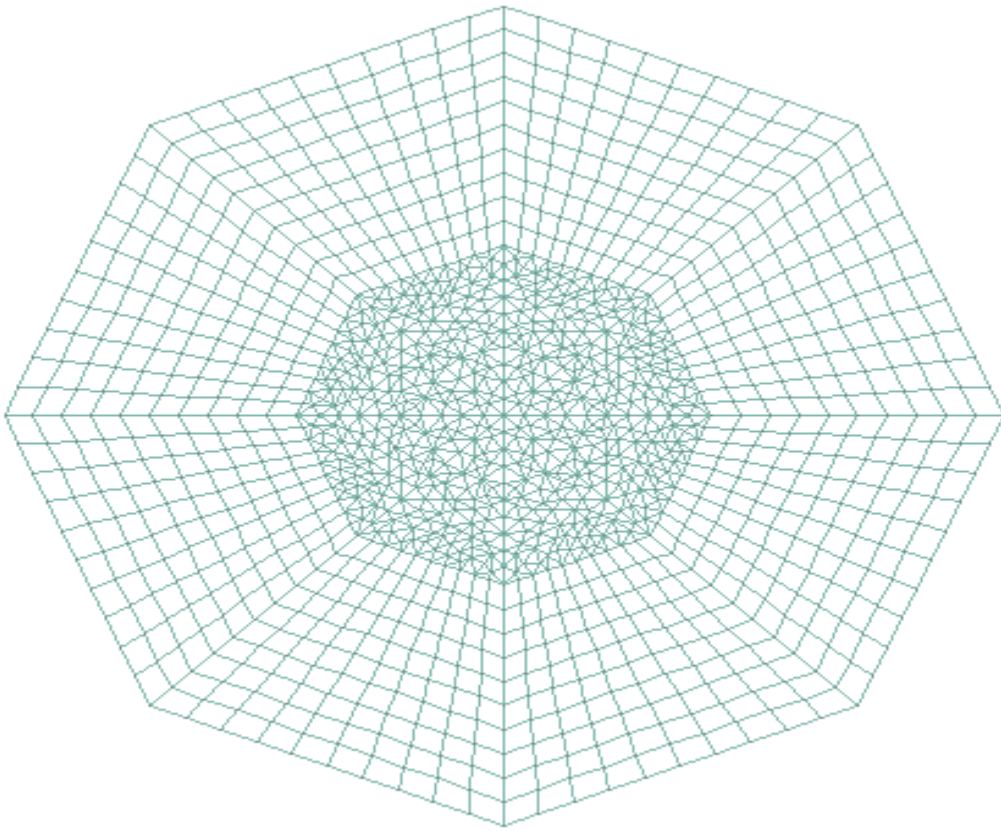


Fig.4 Plate model