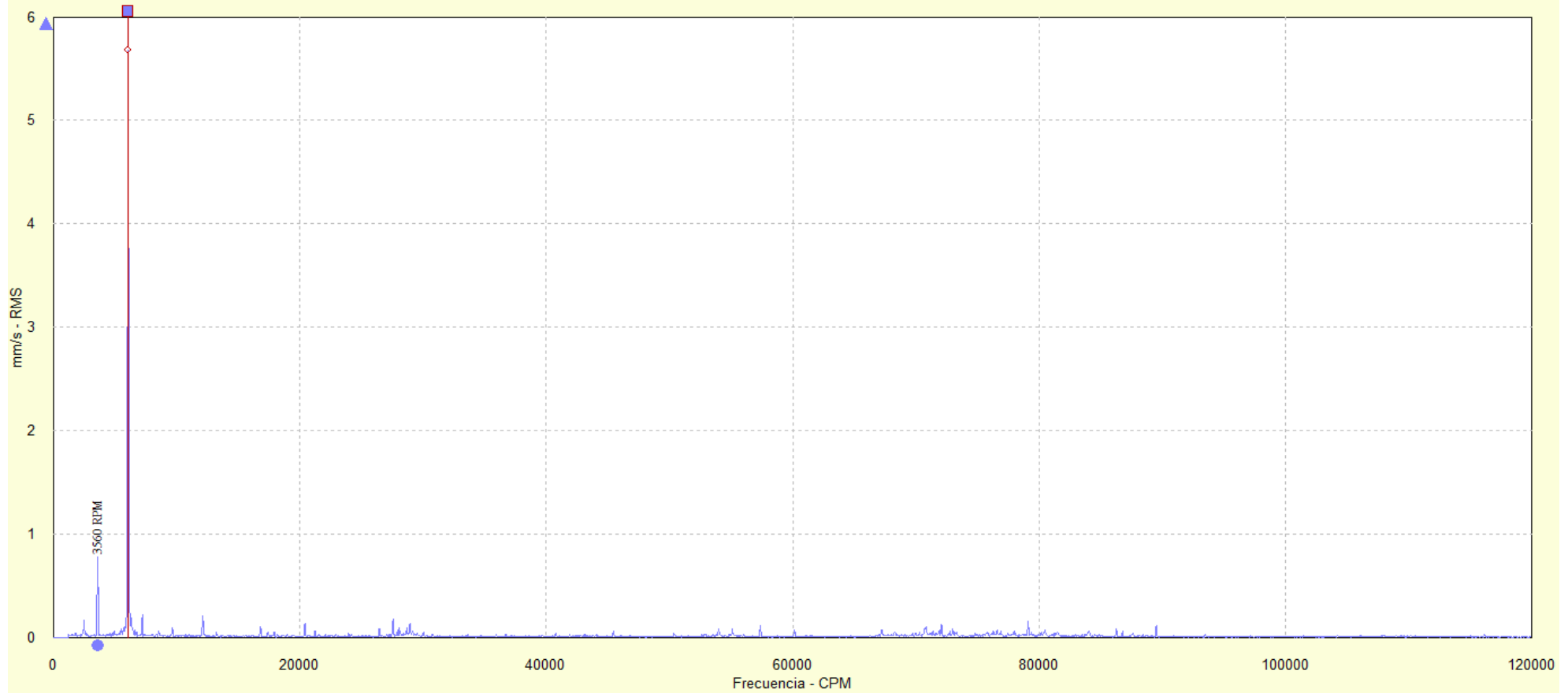


- 1VV: Vertical Non Drive End Electric Motor.

Canal X, Global Tendency: 6.562 mm/s

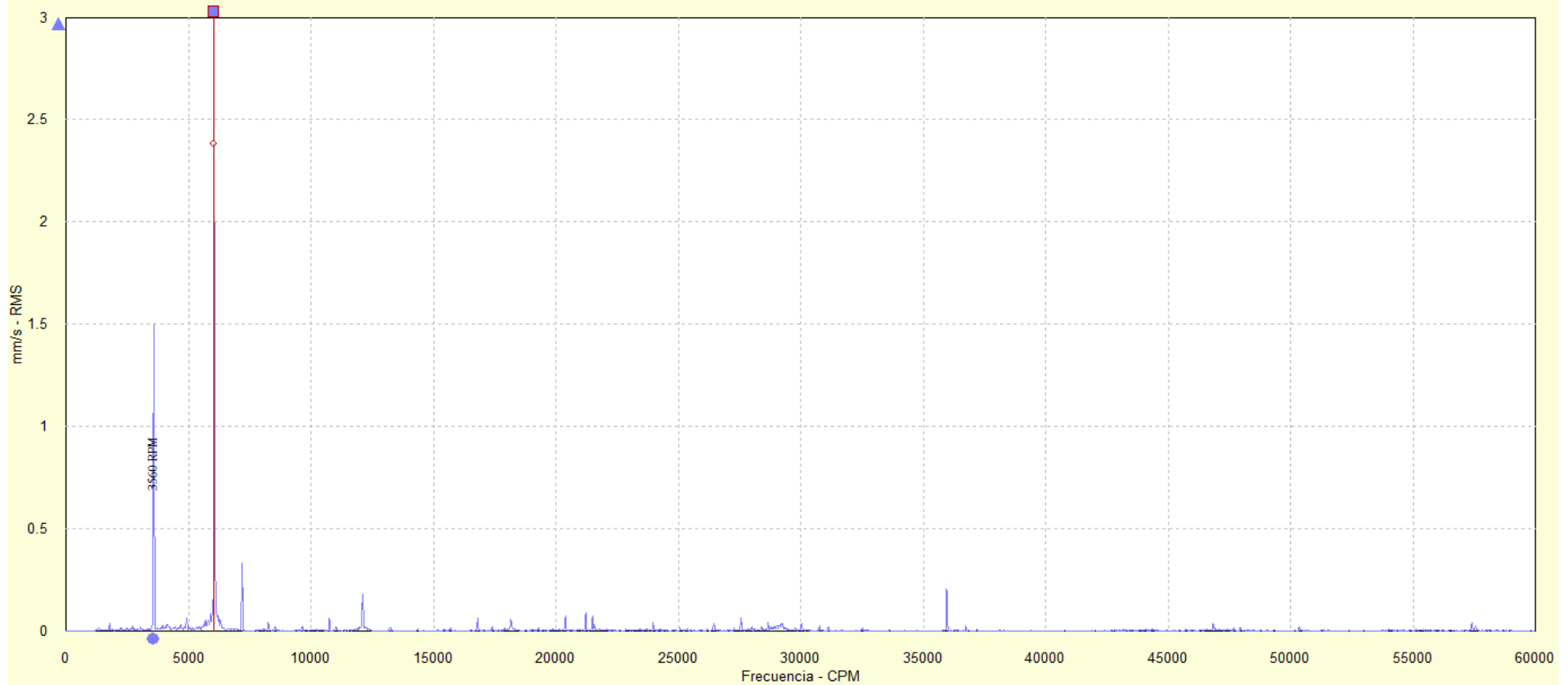
Amp: 5.678, Frec: 6075, Orden: 1.71, ---



- 1HV: Horizontal Non Drive End Electric Motor.

Canal X, Global Tendency: 3.014 mm/s

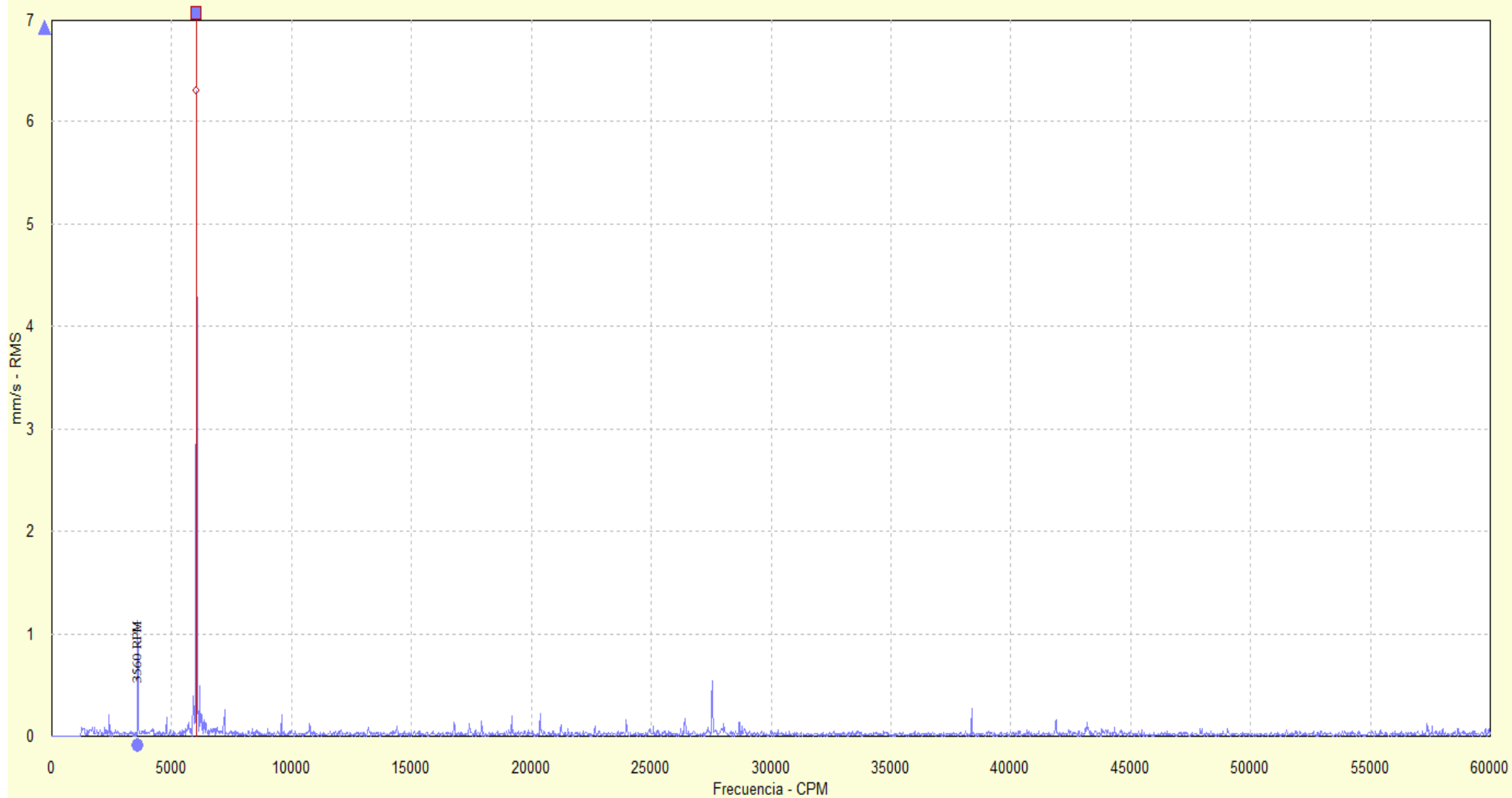
Amp: 2.377, Frec: 6056, Orden: 1.7, ---



- 2VV: Vertical Drive End Electric Motor

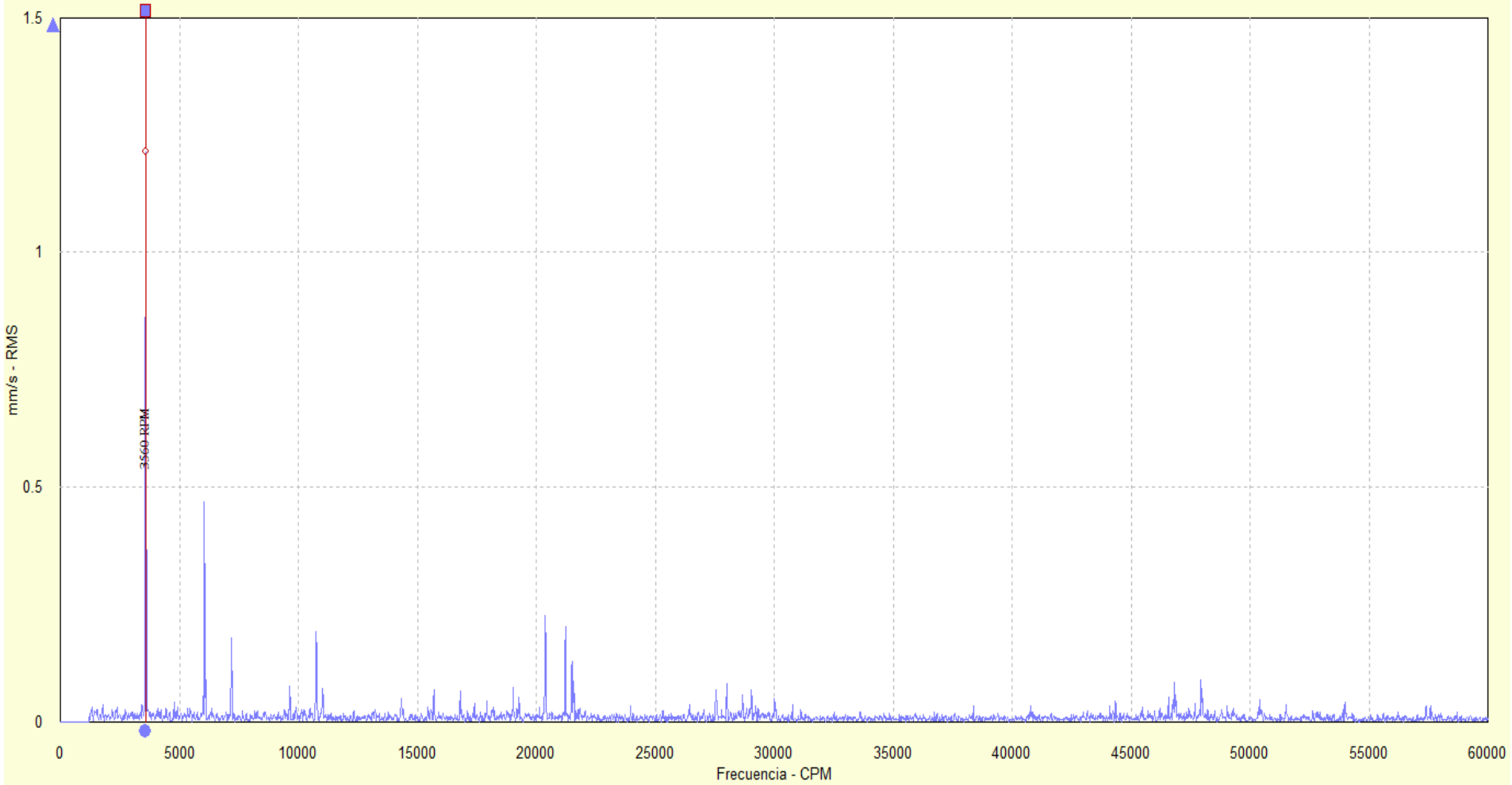
Canal X, Global Tendency: 7.034 mm/s

Amp: 6.294, Frec: 6038, Orden: 1.7, ---



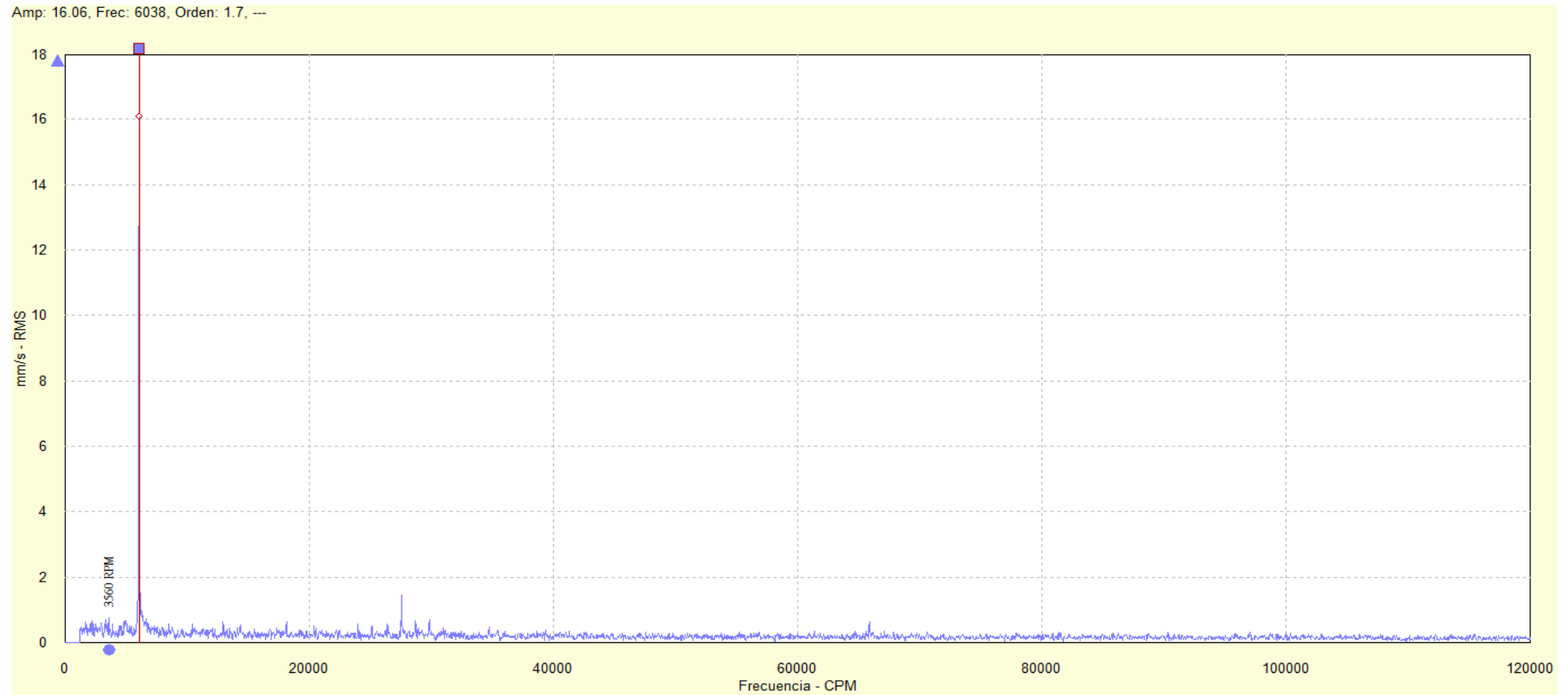
- 2HV: Horizontal Drive End Electric Motor
- Canal X, Global Tendency: 1.513 mm/s

Amp: 1.212, Frec: 3581, Orden: 1.01, ---



- 3VV: Vertical Drive End Pump

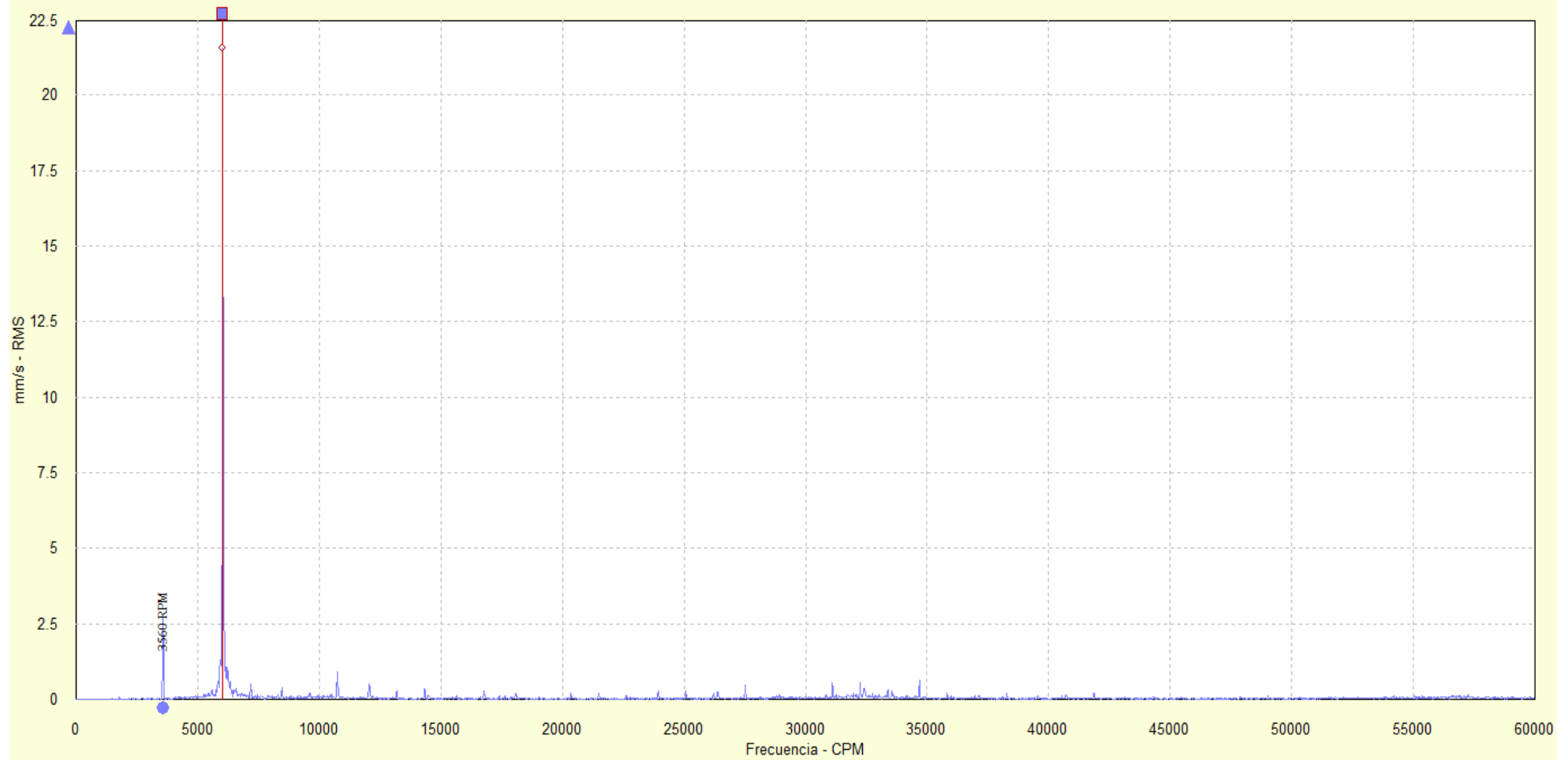
Canal X, Global Tendency: 19.42 mm/s



- 3HV: Horizontal Drive End Pump

Canal X, Global Tendency: 26.17 mm/s

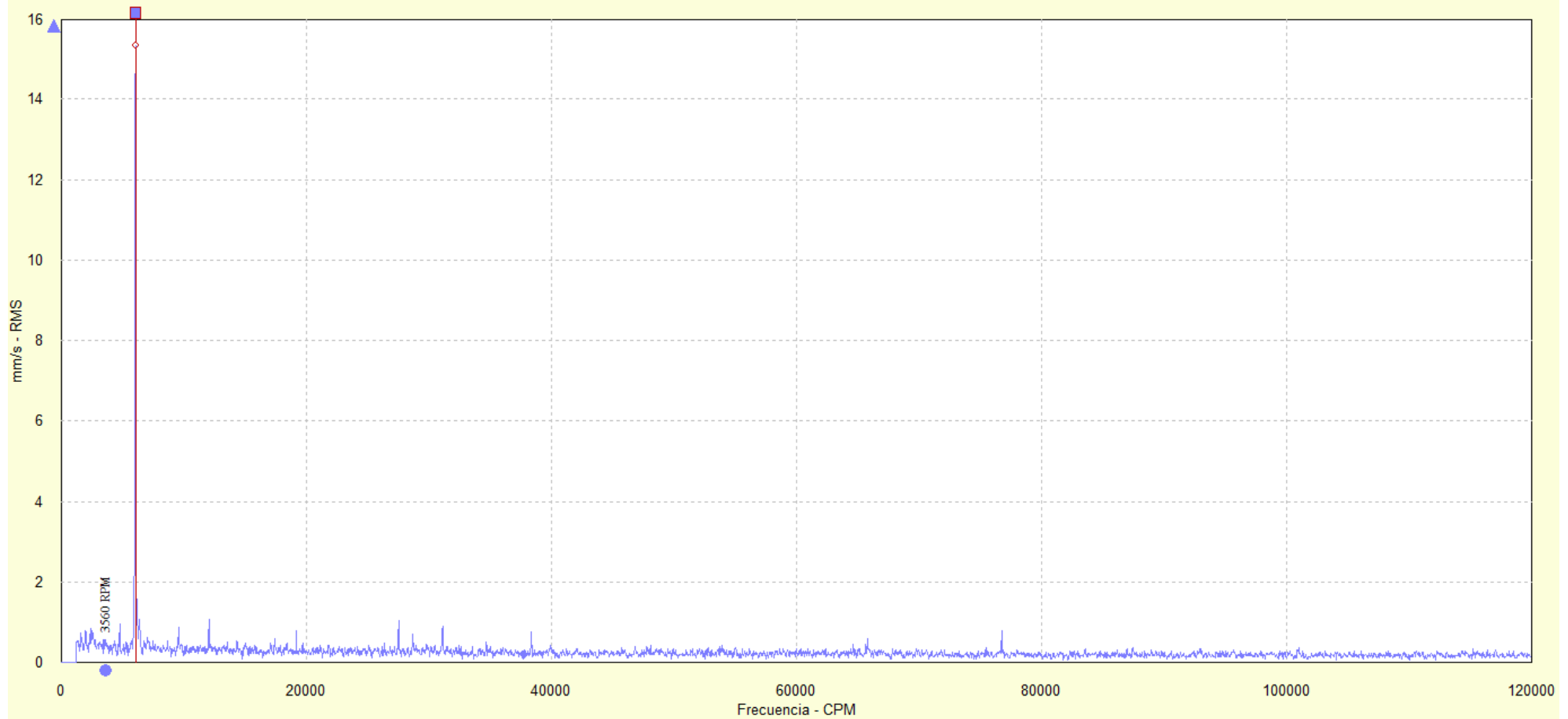
Amp: 21.56, Frec: 6019, Orden: 1.69, ---



- 4VV: Vertical Non Drive End Pump

Canal X, Global Tendency: 20.96 mm/s

Amp: 15.32, Frec: 6038, Orden: 1.7, ---





- 4HV: Horizontal Non Drive End Pump

Canal X, Global Tendency: 12.82 mm/s

Amp: 11.31, Frec: 6019, Orden: 1.69, ---

