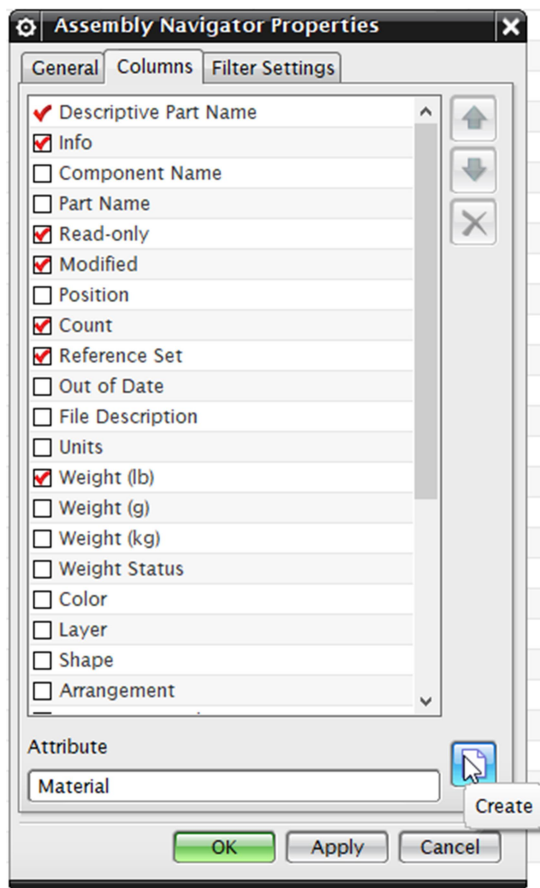
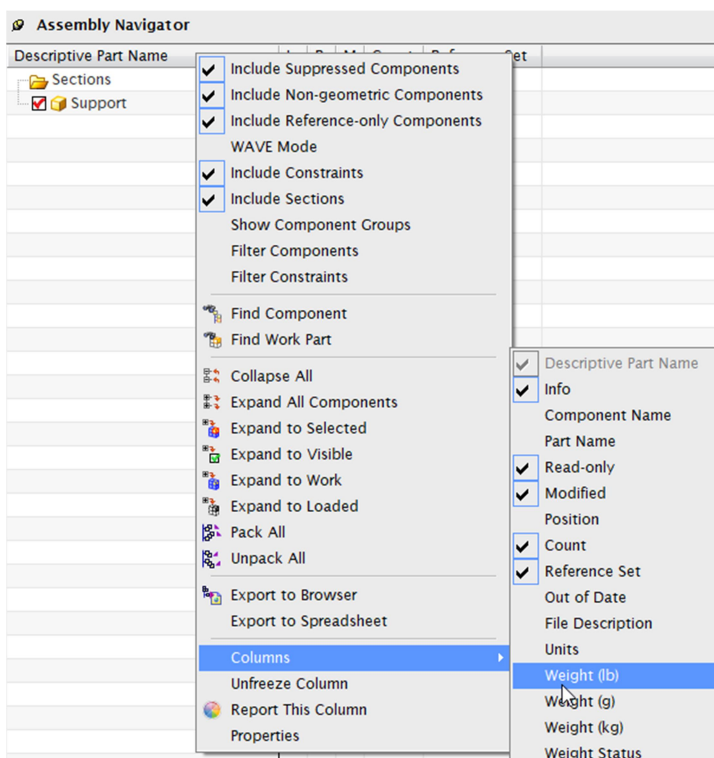


Assign the material by Menu-> Tools-> Materials->Assign Material->Select body

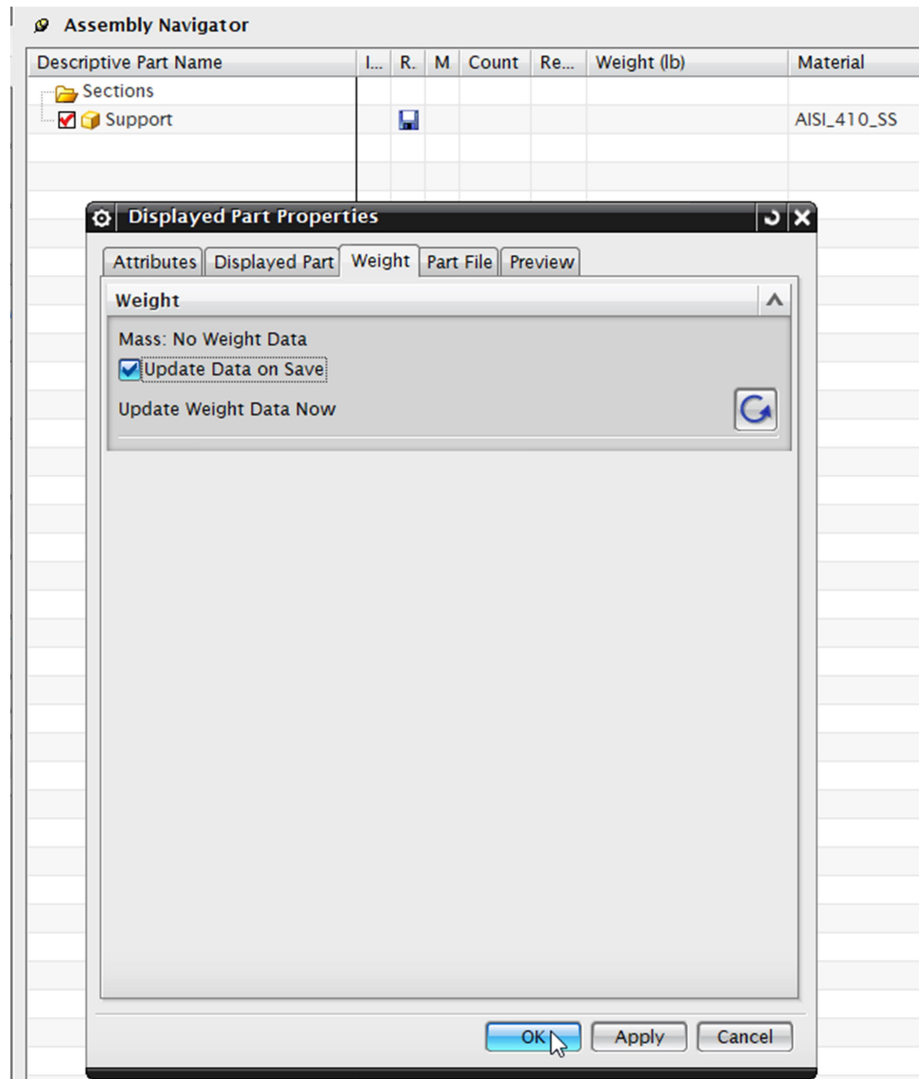
Create and Add 'Material' column to the Assembly navigator.









Add weight column to the Assembly navigator



In File->Properties go to Weight tab and switch on 'Update Data on Save' and apply OK.



Do above steps for each part file in the Assembly and save them. Then go to Assembly file switch on Weight column.

Assembly Navigator							
Descriptive Part Name	I...	R.	M	Count	Reference Set	Weight (lb)	Material
Sections							
 MyAssy (Order: Chronologi...				3		1.3805	
Constraints							
 base					Model ("MODE...	1.0468	Steel
 Support					Model ("MODE...	0.3337	AISI_410_SS