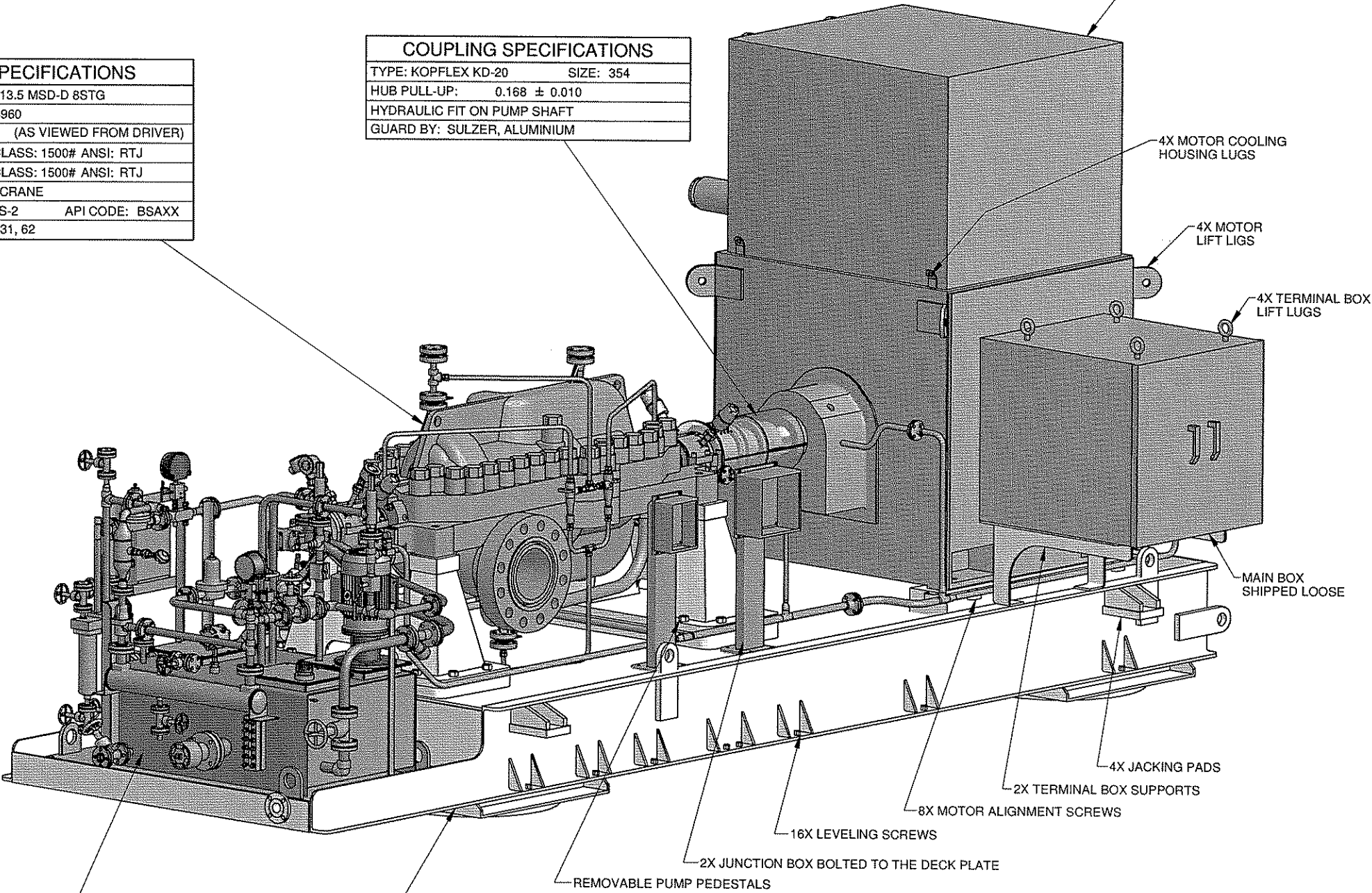


REFERENCE DRAWINGS	
PCS1000100650010-01	MANUAL CROSS-SECTION DRAWING
APP1000100650010-01	SEAL PIPING
AEP1000100650010-01	P & ID, INSTRUMENTATION DRAWING

PUMP SPECIFICATIONS	
SIZE & TYPE:	6X10X13.5 MSD-D 8STG
SPEED:	2200-3960
ROTATION:	CCW (AS VIEWED FROM DRIVER)
DISCH FLG:	6" CLASS: 1500# ANSI: RTJ
SUCT FLG:	10" CLASS: 1500# ANSI: RTJ
MECH SEAL:	JOHN CRANE
MFR TYPE:	1648RS-2
API CODE:	BSAXX
API PIPING PLANS:	31, 62

COUPLING SPECIFICATIONS	
TYPE:	KOPFLEX KD-20
SIZE:	354
HUB PULL-UP:	0.168 ± 0.010
HYDRAULIC FIT ON PUMP SHAFT	
GUARD BY:	SULZER, ALUMINIUM

DRIVER SPECIFICATIONS	
MOTOR:	TECO
FRAME:	7111 (C2984AA)
HP:	4500
SPEED:	(2200-3960)
PHASE:	3
VOLTAGE:	4000
FURNISHED BY:	SULZER
CYCLE:	60



LOS IS VERY VERY CLOSE BUT NOT QUITE THERE YET.

BOTTOM DESIGNED FOR 4X AIR FLOAT SKIDS 37 X 37 X 4. SEE SHEET 5

- NOTES:
- CAUTION!** CAREFULLY CHECK ALIGNMENT BEFORE STARTING UNIT. ALL HOLES IN FLANGES STRADDLE CENTERLINES. UNIT SHOULD BE RELIEVED OF EXCESS PIPING STRAINS.
 - COLORS ARE NOT INTENDED TO REPRESENT "AS SHIPPED" PAINT REQUIREMENTS. THEY ARE FOR QUICK IDENTIFICATION OF PIPING AND EQUIPMENT.
 - PIPING AND EQUIPMENT ARE MODELED REPRESENTATIONS ONLY, ACTUAL LOCATION AND ORIENTATION MAY VARY PER SHOP STANDARDS, UNLESS OTHERWISE DIMENSIONED.

APPROXIMATE WEIGHTS	
PUMP:	11,200 LBS
PUMP WITH PEDESTALS:	(13,000) LBS
MOTOR:	26,300 LBS
MOTOR CONDUIT BOX:	800 LBS
BASEPLATE:	12,500 LBS
AUXILIARY:	1,200 LBS
TOTAL:	52,000 LBS

CONTRACT DATA

PURCHASER: ExxonMobil PRODUCTION COMPANY

USER: ExxonMobil UPSTREAM USA PRODUCTION

JOB/PROJECT: HONDO FIELD WATER INJECTION

CUST. P.O. NO.: 4501779675

SERVICE: PRODUCED WATER & SEA WATER INJECTION

INSTALLED AT: SANTA YNEZ UNIT, HARMONY PLATFORM

PUMP OEM: SULZER PUMPS (US) INC.

SULZER ORDER NO.: 1000100650010

IDENTIFICATION NUMBERS

SULZER SERIAL NO.	CUSTOMER TAG NO'S	
	PUMP	DRIVER
359982	PAT-376	PAT-376 MOTOR
359983	PAT-377	PAT-377 MOTOR
359984	PAT-378	PAT-378 MOTOR
-	-	-
-	-	-

DRAWING CONTENT

SHEET DESCRIPTION	SHEET NO.
DATA SHEET & ISOMETRIC	1
FOUNDATION & NOZZLE LOCATIONS	2
CUSTOMER CONNECTIONS	3
INSTRUMENTATION	4
AIR FLOAT DIMENSIONS	5

<input checked="" type="checkbox"/> CERTIFIED FINAL	DO NOT SCALE. DIMENSIONS: INCH [mm]
<input type="checkbox"/> CERTIFIED FOR NOZZLE & FOUNDATION ONLY	UNLESS OTHERWISE SPECIFIED
<input type="checkbox"/> PRELIMINARY ONLY	TOLERANCES
BY: ALK DATE: 23-FEB-09	.X ±.25 [6]
	.XX ±.12 [3]

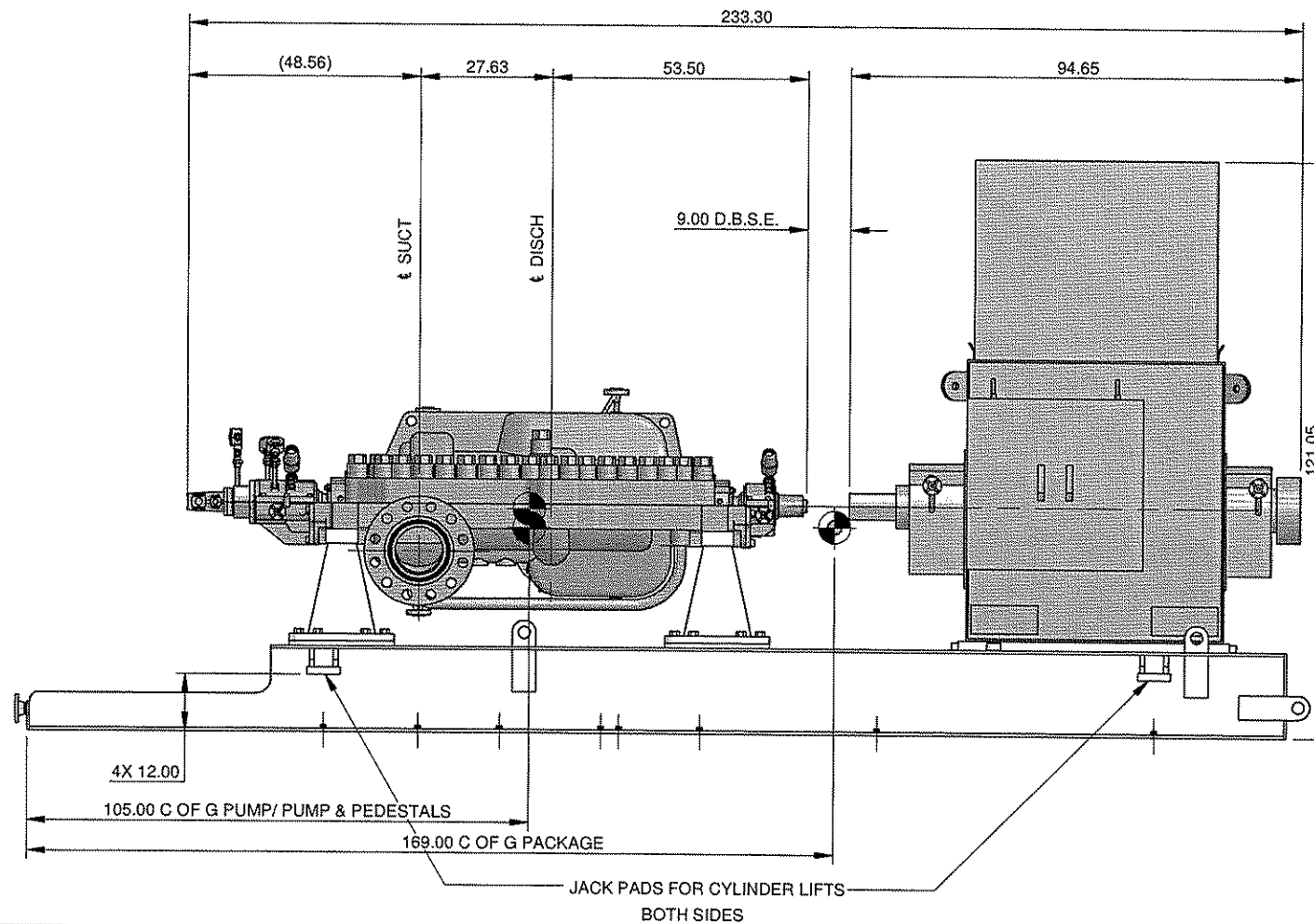
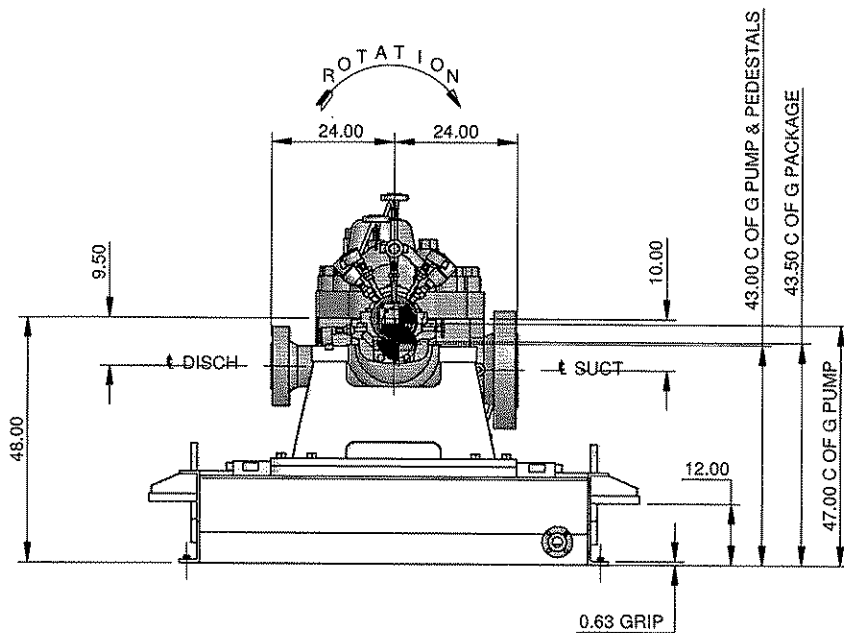
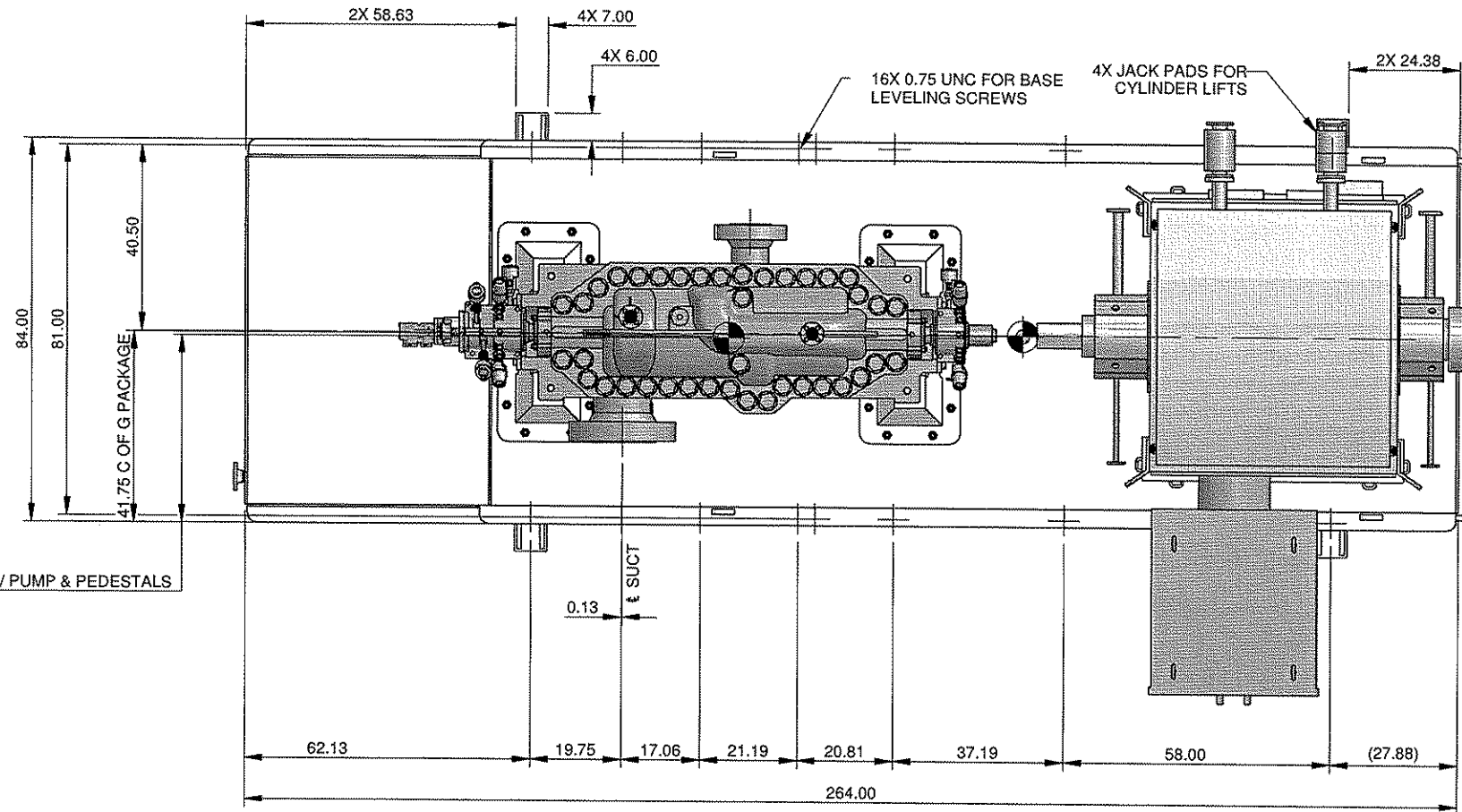
(B) ALL SHEETS REVISED PER CUSTOMER COMMENT	DP/ALK	23-FEB-09
(A) ALL SHEETS REVISED PER CUSTOMER COMMENT	BML/ALK	01-OCT-08
MODIFICATION	NAME	DATE
COMPONENT INFORMATION	DESIGN GROUP	SULZER PUMPS (US) INC.
REPLACED BY	SUBSTITUTE FOR	ORIGINAL SCALE
6X10X13.5 MSD-D 8STG		NONE
1000100650010	DATA SHEET & ISOMETRIC	
	GENERAL ARRANGEMENT	
SULZER	PART NO.	E
		PGA1000100650010-01
		1 / 5

MAXIMUM NOZZLE LOADINGS

FORCE IN (Lb)		MOMENTS IN (Ft-Lb)	
		SUCT	DISCH
FORCE	Fx	2400	1120
	Fy	3000	1400
	Fz	2000	920
	Fr	4400	2020
MOMENTS	Mx	7400	3400
	My	3600	1740
	Mz	5600	2600
	Mr	10000	4620

2X 10th EDITION

41.00 C OF G PUMP/ PUMP & PEDESTALS



CONTRACT DATA

PURCHASER: ExxonMobil PRODUCTION COMPANY
 USER: ExxonMobil UPSTREAM USA PRODUCTION
 JOB/PROJECT: HONDO FIELD WATER INJECTION
 CUST. P.O. NO.: 4501779675
 SERVICE: PRODUCED WATER & SEA WATER INJECTION
 INSTALLED AT: SANTA YNEZ UNIT, HARMONY PLATFORM
 PUMP OEM: SULZER PUMPS (US) INC.
 SULZER ORDER NO.: 1000100650010

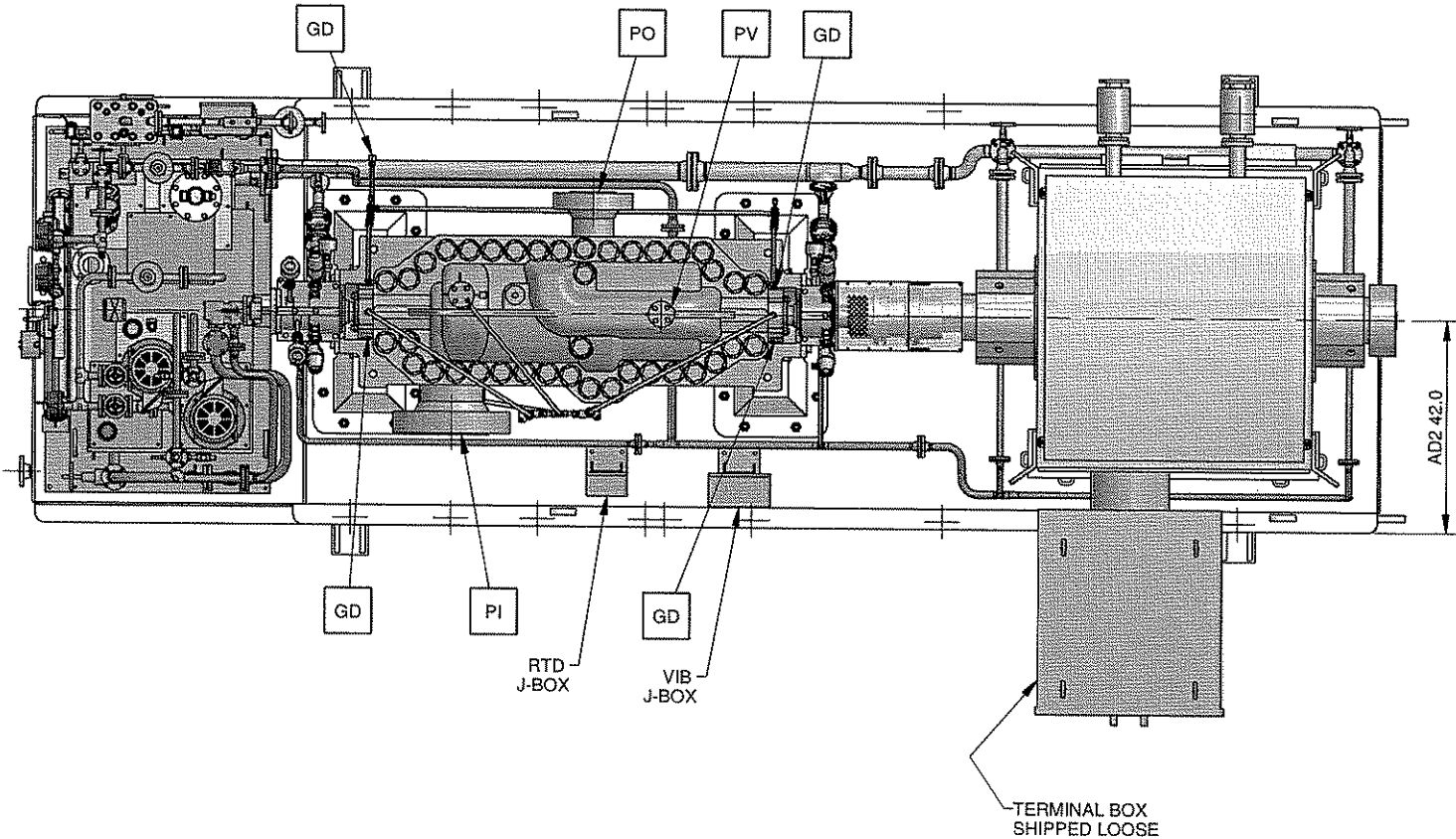
IDENTIFICATION NUMBERS

SULZER SERIAL NO.	CUSTOMER TAG NO'S	
	PUMP	DRIVER
359982	PAT-376	PAT-376 MOTOR
359983	PAT-377	PAT-377 MOTOR
359984	PAT-378	PAT-378 MOTOR

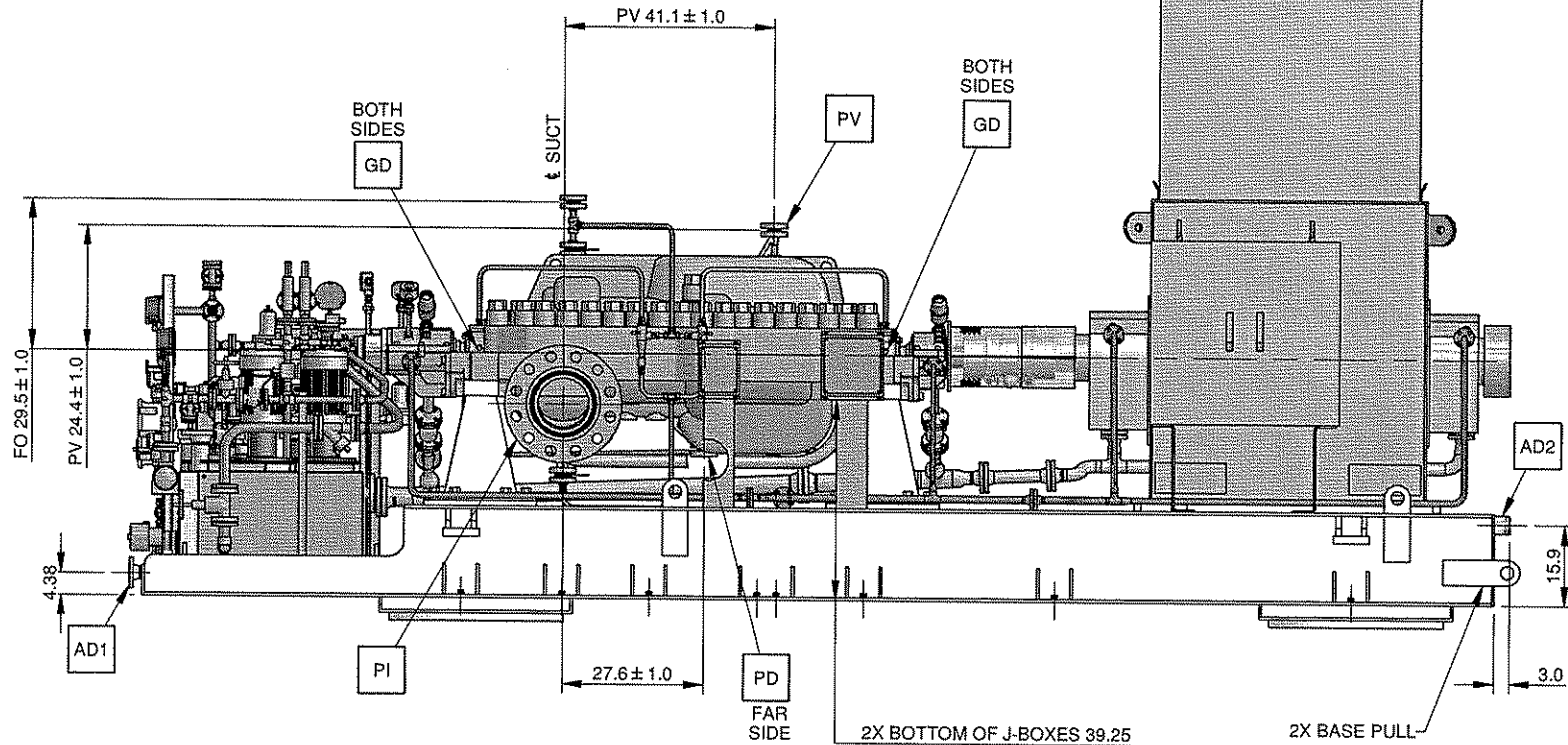
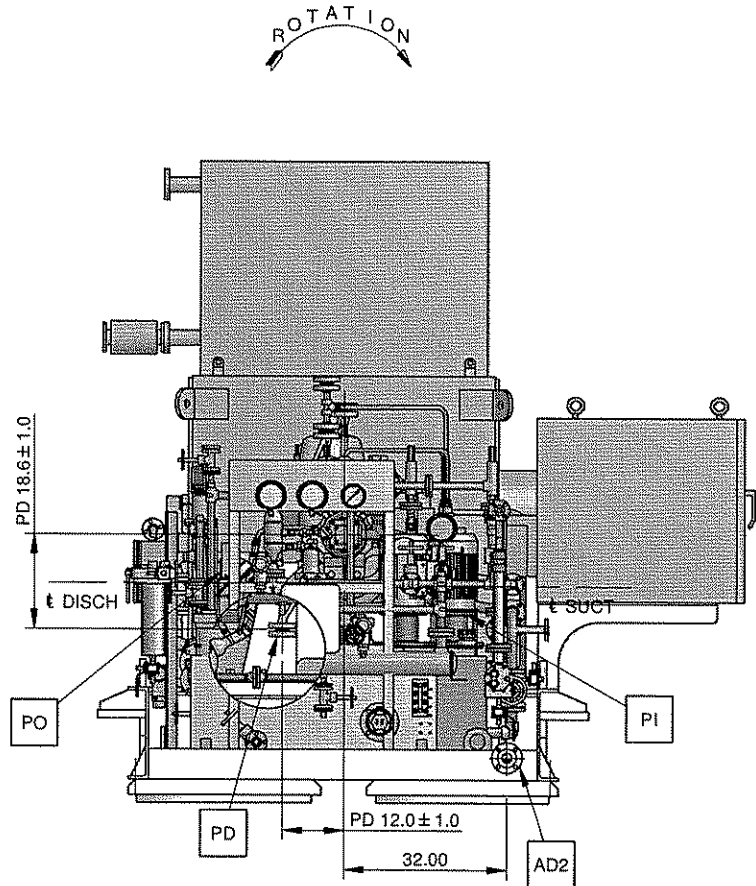
COPYRIGHT © (DATE OF DRAWING) SULZER PUMPS (US) INC. ALL RIGHTS RESERVED. NO PART OF THIS DRAWING MAY BE REPRODUCED, DISTRIBUTED, OR TRANSMITTED IN ANY FORM OR BY ANY MEANS, ELECTRONIC OR MECHANICAL, INCLUDING PHOTOCOPYING AND RECORDING, WITHOUT THE EXPRESS PRIOR WRITTEN CONSENT OF SULZER PUMPS (US) INC.

B	PER CUSTOMER COMMENT	DP/ALK	23-FEB-08
	PER CUSTOMER COMMENT	BML/ALK	01-OCT-08
A	MODIFICATION	NAME	DATE
	COMPONENT INFORMATION	DESIGN GROUP	SULZER PUMPS (US) INC.
REPLACED BY		SUBSTITUTE FOR	ORIGINAL SCALE
6X10X13.5 MSD-D 8STG		FOUNDATION & NOZZLE LOCATIONS	DRAWN: 09-JUL-08
1000100650010		GENERAL ARRANGEMENT	CHECKED: 09-JUL-08
SULZER		PART No.	APPROVED: 09-JUL-08
E		PGA1000100650010-01	HA
		2 / 5	

CONNECTION LEGEND			
ITEM	DESCRIPTION	SIZE	TYPE
PI	PUMP SUCTION NOZZLE	10.0	FLANGE, 1500# ANSI RTJ
PO	PUMP DISCHARGE NOZZLE	6.0	FLANGE, 1500# ANSI RTJ
PD	PUMP DRAIN	0.75	BLIND FLANGE, 1500# ANSI RTJ
PV	PUMP VENT	0.75	BLIND FLANGE, 1500# ANSI RTJ
AD1	LUBE OIL DRAIN	1.0	FLANGE, 150# ANSI RF
AD2	BASE DRAIN	3.0	PIPE, MNPT
FO	SEAL FLUSH - OUTLET	0.75	NPT, PLUGGED
GD	GLAND DRAIN	0.50	NPT, PLUGGED




CONTRACT DATA		
PURCHASER: ExxonMobil PRODUCTION COMPANY		
USER: ExxonMobil UPSTREAM USA PRODUCTION		
JOB/PROJECT: HONDO FIELD WATER INJECTION		
CUST. P.O. NO.: 4501779675		
SERVICE: PRODUCED WATER & SEA WATER INJECTION		
INSTALLED AT: SANTA YNEZ UNIT, HARMONY PLATFORM		
PUMP OEM: SULZER PUMPS (US) INC.		
SULZER ORDER NO.: 1000100650010		
IDENTIFICATION NUMBERS		
SULZER SERIAL NO.	CUSTOMER TAG NO'S	
	PUMP	DRIVER
359982	PAT-376	PAT-376 MOTOR
359983	PAT-377	PAT-377 MOTOR
359984	PAT-378	PAT-378 MOTOR

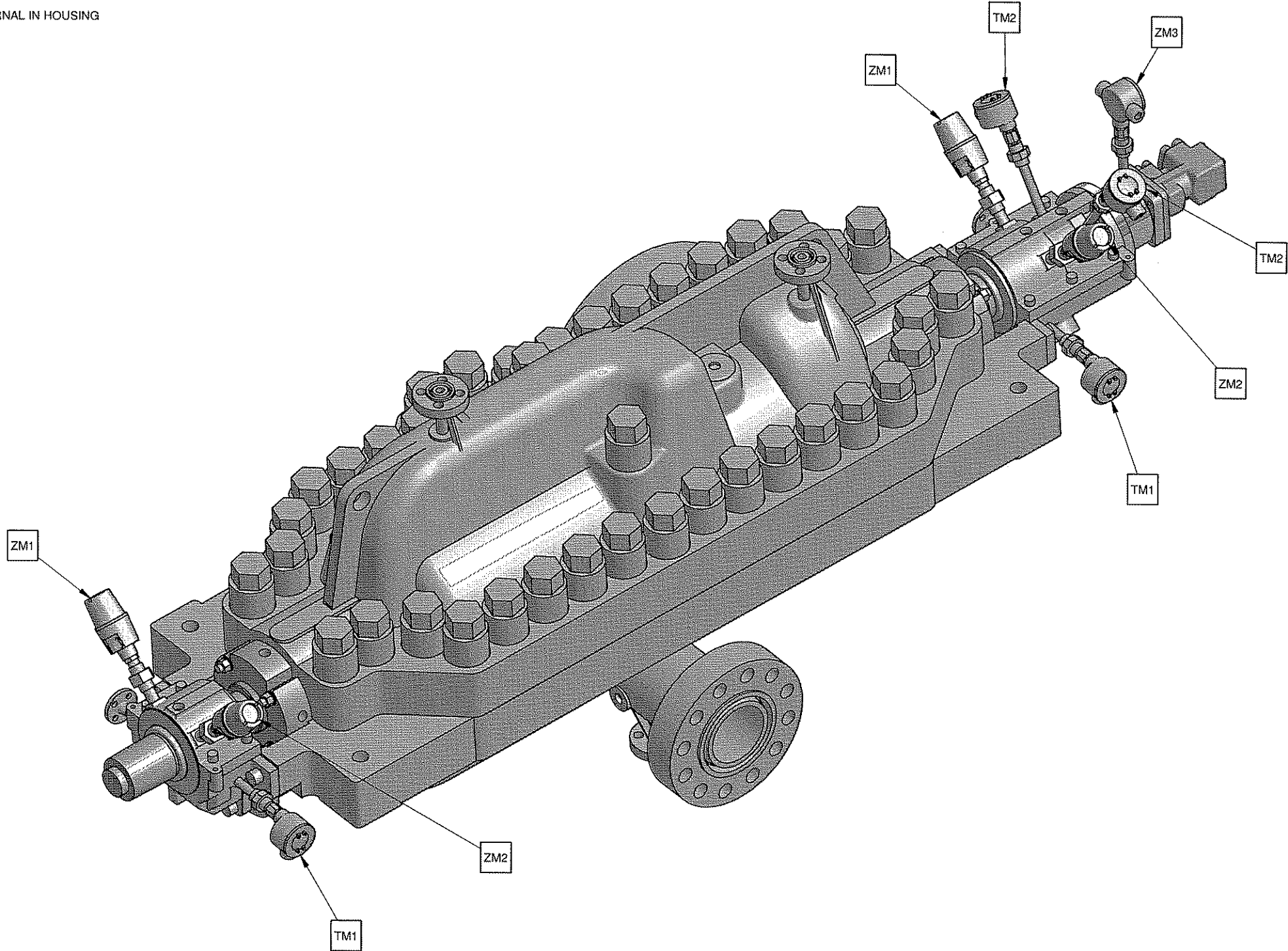


COPYRIGHT © (DATE OF DRAWING) SULZER PUMPS (US) INC. ALL RIGHTS RESERVED. NO PART OF THIS DRAWING MAY BE REPRODUCED, DISTRIBUTED, OR TRANSMITTED IN ANY FORM OR BY ANY MEANS, ELECTRONIC OR MECHANICAL, INCLUDING PHOTOCOPYING AND RECORDING, WITHOUT THE EXPRESS PRIOR WRITTEN CONSENT OF SULZER PUMPS (US) INC.

(B) PER CUSTOMER COMMENT		DP/ALK	23-FEB-09
(A) PER CUSTOMER COMMENT		EM/ALK	01-OCT-08
MODIFICATION		NAME	DATE
COMPONENT INFORMATION	DESIGN GROUP	SULZER PUMPS (US) INC.	CAD - DRAWING
REPLACED BY	SUBSTITUTE FOR	ORIGINAL SCALE	NONE
6X10X13.5 MSD-D 8STG	CUSTOMER CONNECTIONS		DRAWN: 09-JUL-08
1000100650010			DP
			CHECKED: 09-JUL-08
	GENERAL ARRANGEMENT		ALK
			APPROVED: 09-JUL-08
			HA
SULZER		PART No.	E
PGA1000100650010-01			3 / 5

INSTRUMENT LEGEND			
ITEM	DESCRIPTION	SIZE	TYPE
TM1	BEARING RTD'S (RADIAL)	0.50	NPT
TM2	BEARING RTD'S (THRUST)	0.50	NPT
ZM1	VIBRATION PROBE X	0.75	NPT
ZM2	VIBRATION PROBE Y	0.75	NPT
ZM3	VIBRATION PROBE Z, AXIAL POSITION 1	0.75	NPT
ZM3	VIBRATION PROBE Z, AXIAL POSITION 2	0.75	NPT

NOTE:  PROBES INTERNAL IN HOUSING

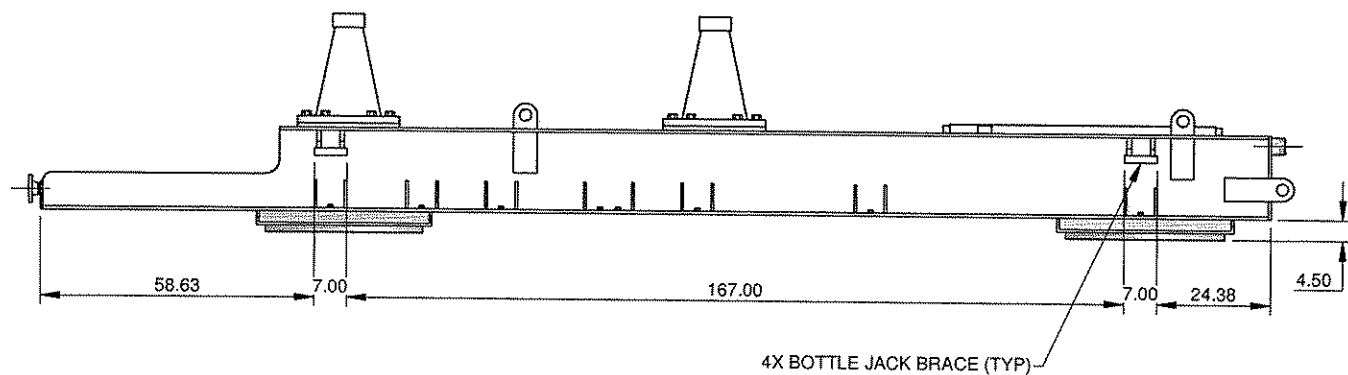
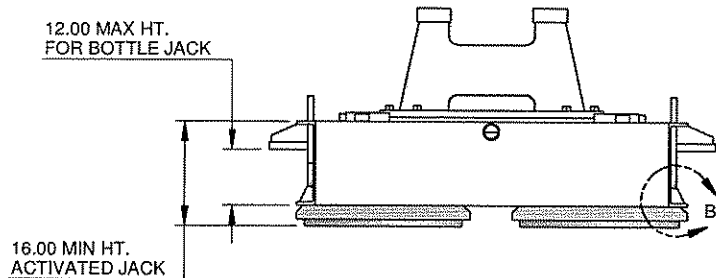
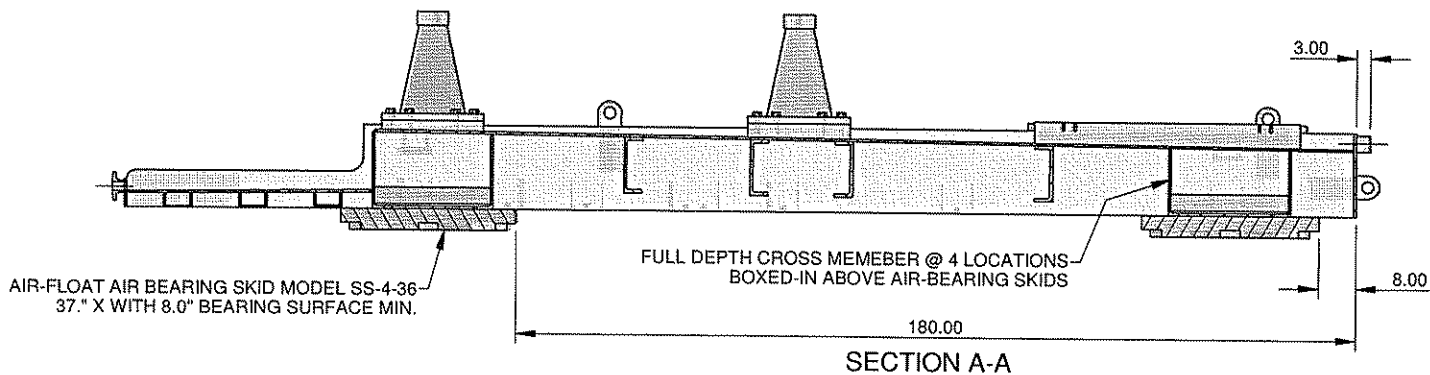
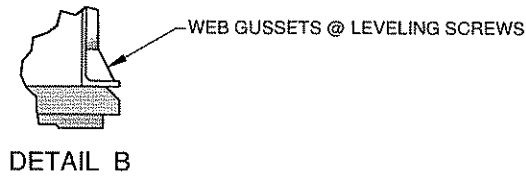
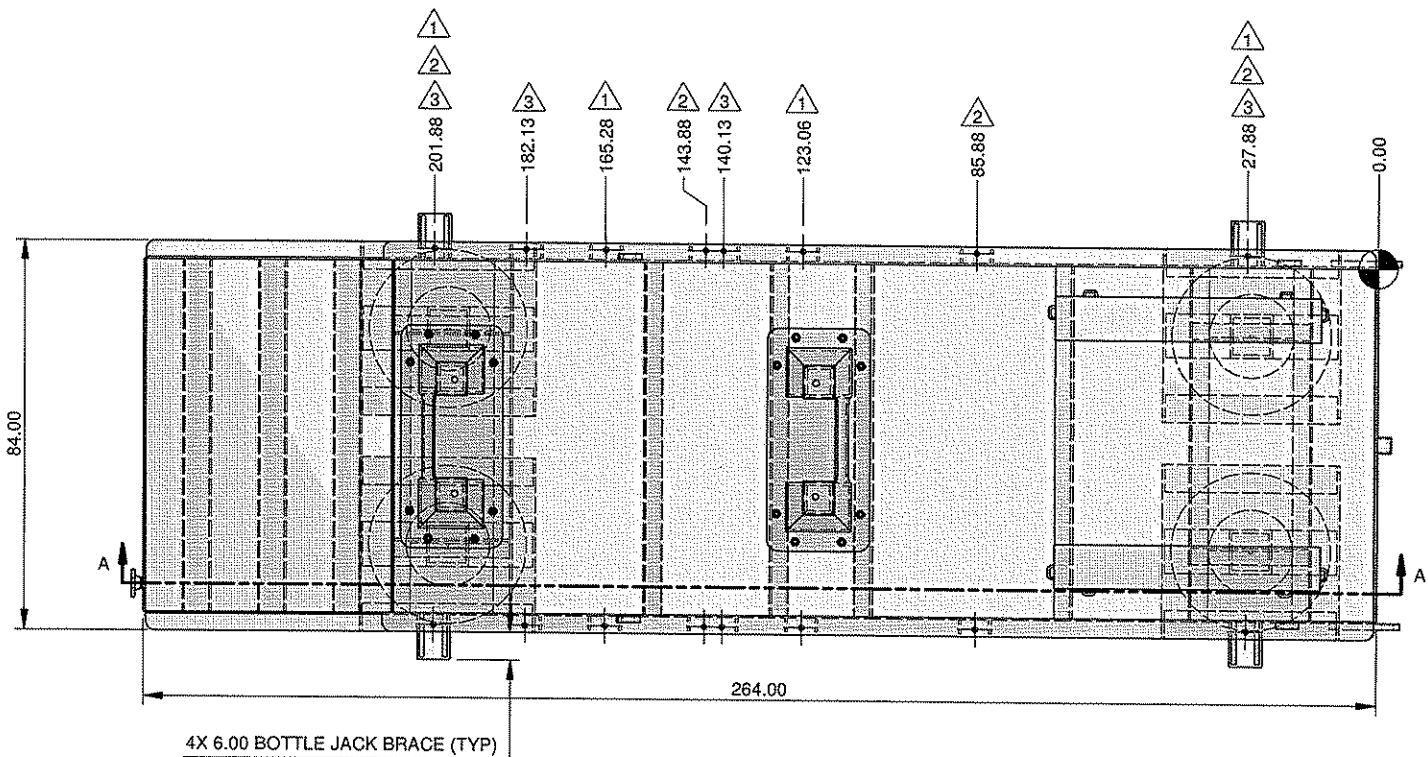


CONTRACT DATA			
PURCHASER: ExxonMobil PRODUCTION COMPANY			
USER: ExxonMobil UPSTREAM USA PRODUCTION			
JOB/PROJECT: HONDO FIELD WATER INJECTION			
CUST. P.O. NO.: 4501779675			
SERVICE: PRODUCED WATER & SEA WATER INJECTION			
INSTALLED AT: SANTA YNEZ UNIT, HARMONY PLATFORM			
PUMP OEM: SULZER PUMPS (US) INC.			
SULZER ORDER NO.: 1000100650010			
IDENTIFICATION NUMBERS			
SULZER SERIAL NO.	CUSTOMER TAG NO'S		
	PUMP	DRIVER	
359982	PAT-376	PAT-376 MOTOR	
359983	PAT-377	PAT-377 MOTOR	
359984	PAT-378	PAT-378 MOTOR	
<div></div>			
PER CUSTOMER COMMENTS		DP/ALK	23-FEB-09
PER CUSTOMER COMMENT, ADDED ZM3		BML/ALK	01-OCT-08
MODIFICATION		NAME	DATE
COMPONENT INFORMATION	DESIGN GROUP	SULZER PUMPS (US) INC.	CAD - DRAWING
REPLACED BY	SUBSTITUTE FOR		ORIGINAL SCALE
6X10X13.5 MSD-D 8STG	INSTRUMENTATION		DRAWN: 09-JUL-08
			DP
			CHECKED: 09-JUL-08
1000100650010	GENERAL ARRANGEMENT		ALK
			APPROVED: 09-JUL-08
			HA
SULZER		PART No.	E
PGA1000100650010-01			4 / 5

LEVELING SCREW (LS) LOCATIONS
PUMP TAG

- 1 PAT-376
2 PAT-377
3 PAT-378

PLANE VIEW SHOWING BASE STRUCTURE
UNDER BASE PLATE



CONTRACT DATA

PURCHASER: ExxonMobil PRODUCTION COMPANY

USER: ExxonMobil UPSTREAM USA PRODUCTION

JOB/PROJECT: HONDO FIELD WATER INJECTION

CUST. P.O. NO.: 4501779675

SERVICE: PRODUCED WATER & SEA WATER INJECTION

INSTALLED AT: SANTA YNEZ UNIT, HARMONY PLATFORM

PUMP OEM: SULZER PUMPS (US) INC.

SULZER ORDER NO.: 1000100650010

IDENTIFICATION NUMBERS

SULZER SERIAL NO.	CUSTOMER TAG NO'S	
	PUMP	DRIVER
359982	PAT-376	PAT-376 MOTOR
359983	PAT-377	PAT-377 MOTOR
359984	PAT-378	PAT-378 MOTOR

PER CUSTOMER COMMENT		DP/ALK	23-FEB-09
ADDED THIS SHEET		BML/ALK	01-OCT-08
MODIFICATION		NAME	DATE
COMPONENT INFORMATION	DESIGN GROUP	SULZER PUMPS (US) INC.	CAD - DRAWING
REPLACED BY	SUBSTITUTE FOR		ORIGINAL SCALE
6X10X13.5 MSD-D 8STG	AIR FLOAT POSITION		DRAWN: 30-SEP-08 DP
1000100650010	GENERAL ARRANGEMENT		CHECKED: 30-SEP-08 ALK
SULZER		PART No.	HA
E		PGA1000100650010-01	5 / 5