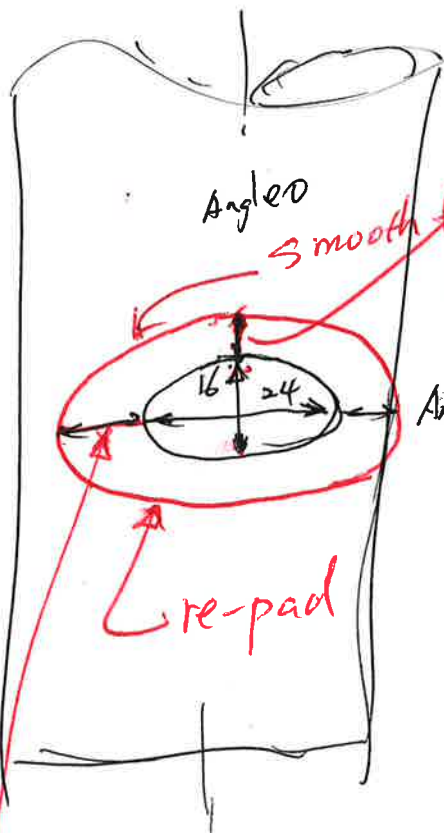


Tangential



Angle 0

Smooth from max. width at angle 90 to min. width at angle 0,

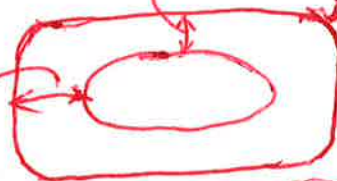
Angle 90

re-pad

min. width due to 16" opening
 $F=1$ for re-pad or integral.

This is hoop stress $\frac{PR}{t}$ area

or use rectangle insert plate
 min. width due to 16" opening
 2" round corner

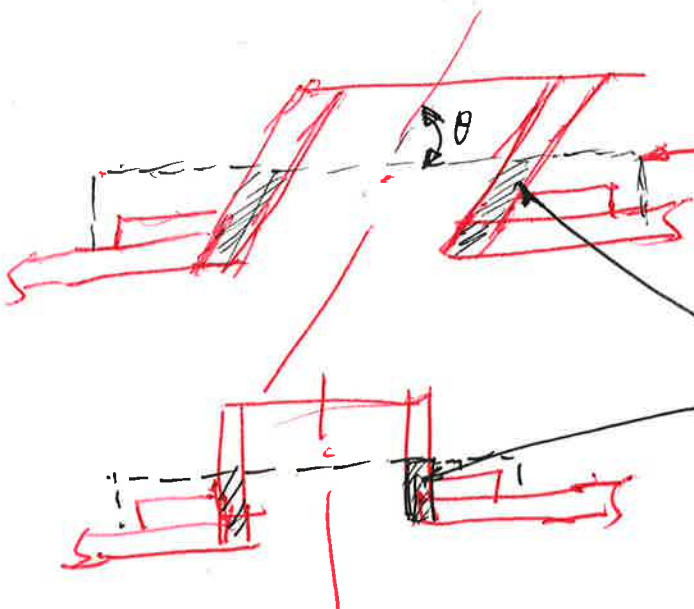


max width due to 24" opening

Insert plate

If insert plate is used, $F=0.5$ for 24" opening side

max width due to 24" opening, $F=1$ for re-pad
 $F=0.5$ for integral.



code UG37.1 boundary

make sure you understand that the available areas in both cases from nozzle are different, top one need to consider θ