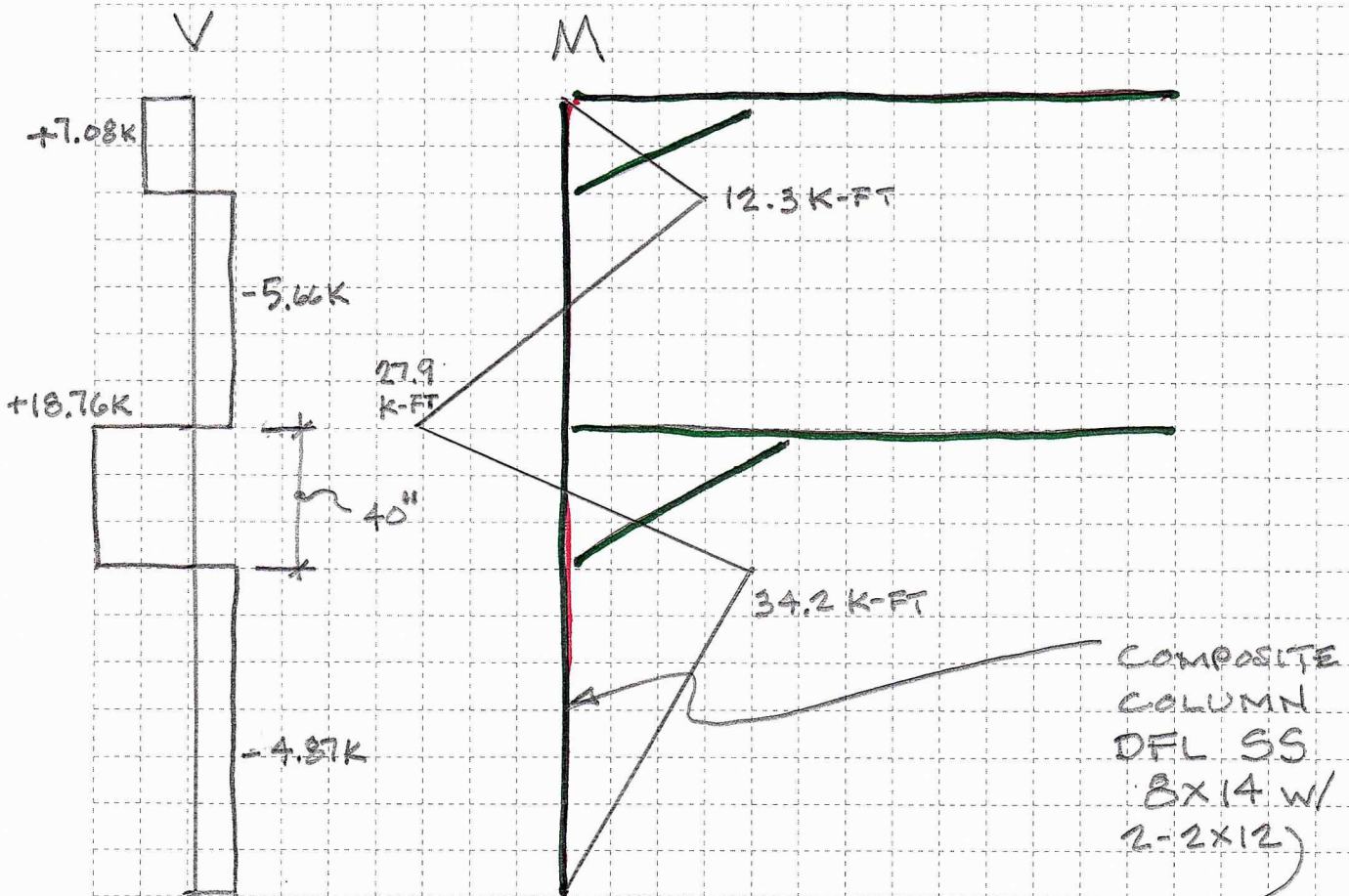


PROJECT _____
 SHEET No. _____ OF _____ COMM. No. _____
 CALCULATED BY _____ DATE _____
 CHECKED BY _____ DATE _____
 SUBJECT _____

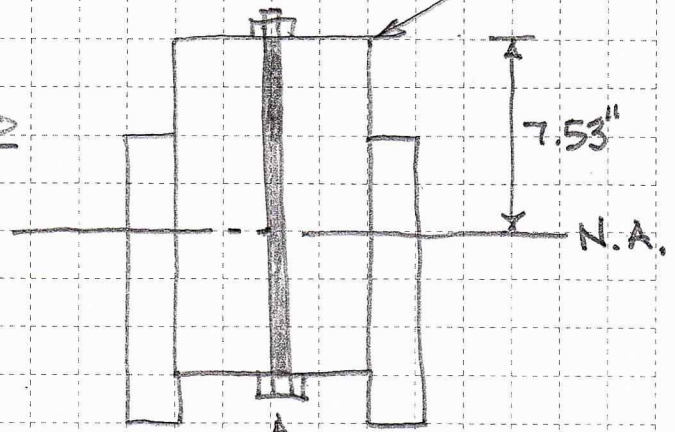


"VERT" SHEAR = 18.76 K
 HORIZONTAL SHEAR = 191.4 PSI > 170

$$\text{SHEAR REINF} = (191.4 - 170) 10.5 = \underline{224.6 \text{ LB/IN}}$$

$$\begin{aligned} \frac{1}{2} \text{ } \phi \text{ BOLT SHEAR CAP} &= 716 \text{ LB} \\ \text{SPACING REQ'D} &= 716 / 224.6 = 3.2 \end{aligned}$$

USE 3" OR STAGGER
2 ROWS @ 6"



$$\begin{aligned} \underline{\underline{\text{OR } 224.6 \times 40}} &= 8984 \text{ LB} \\ \text{NO REQ} &= 8984 / 716 = 12.5 \quad \underline{\underline{\text{USE 13 - } \frac{1}{2} \text{ } \phi \text{ BOLTS TOTAL}}} \end{aligned}$$