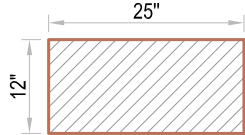
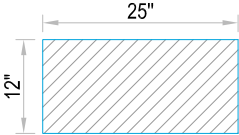
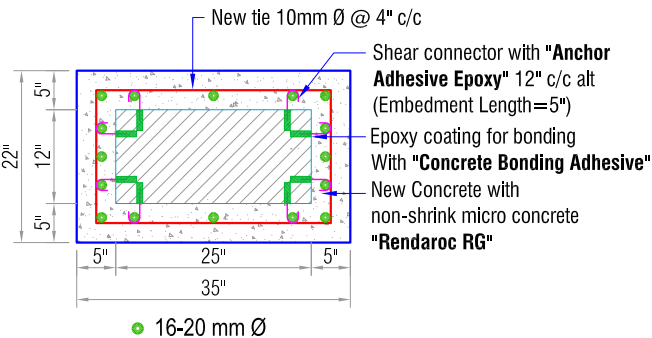
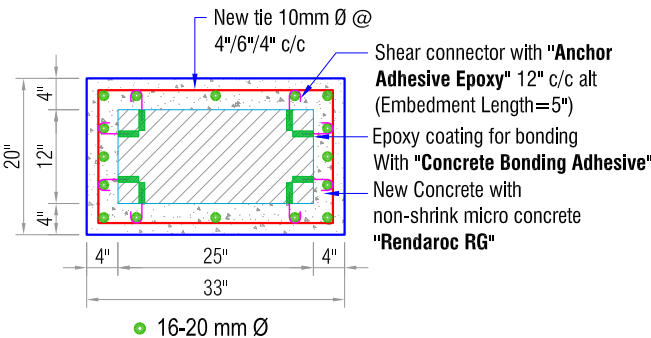
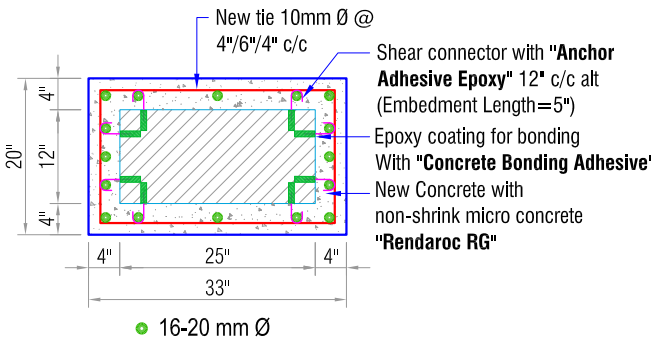
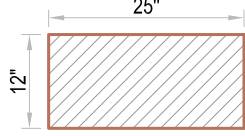
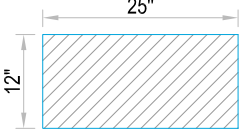
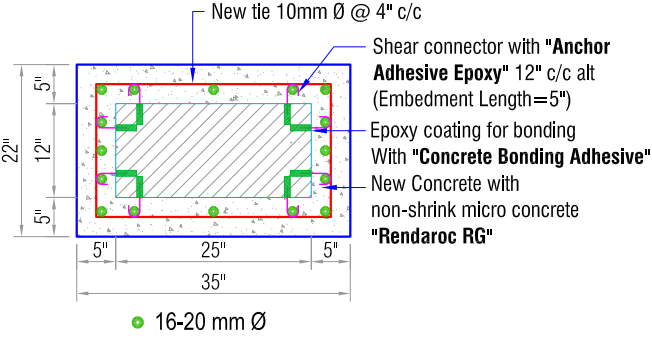
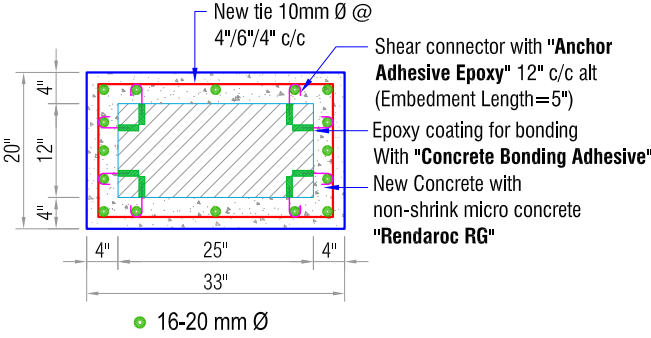
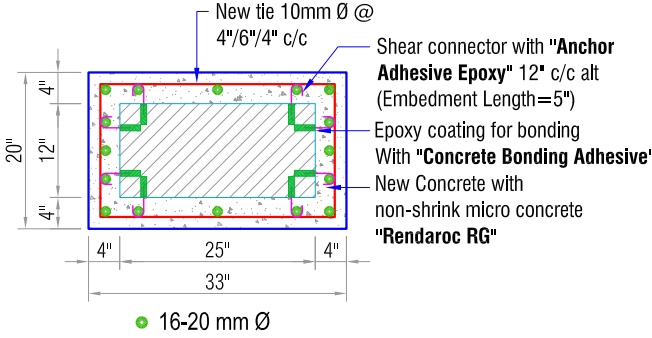
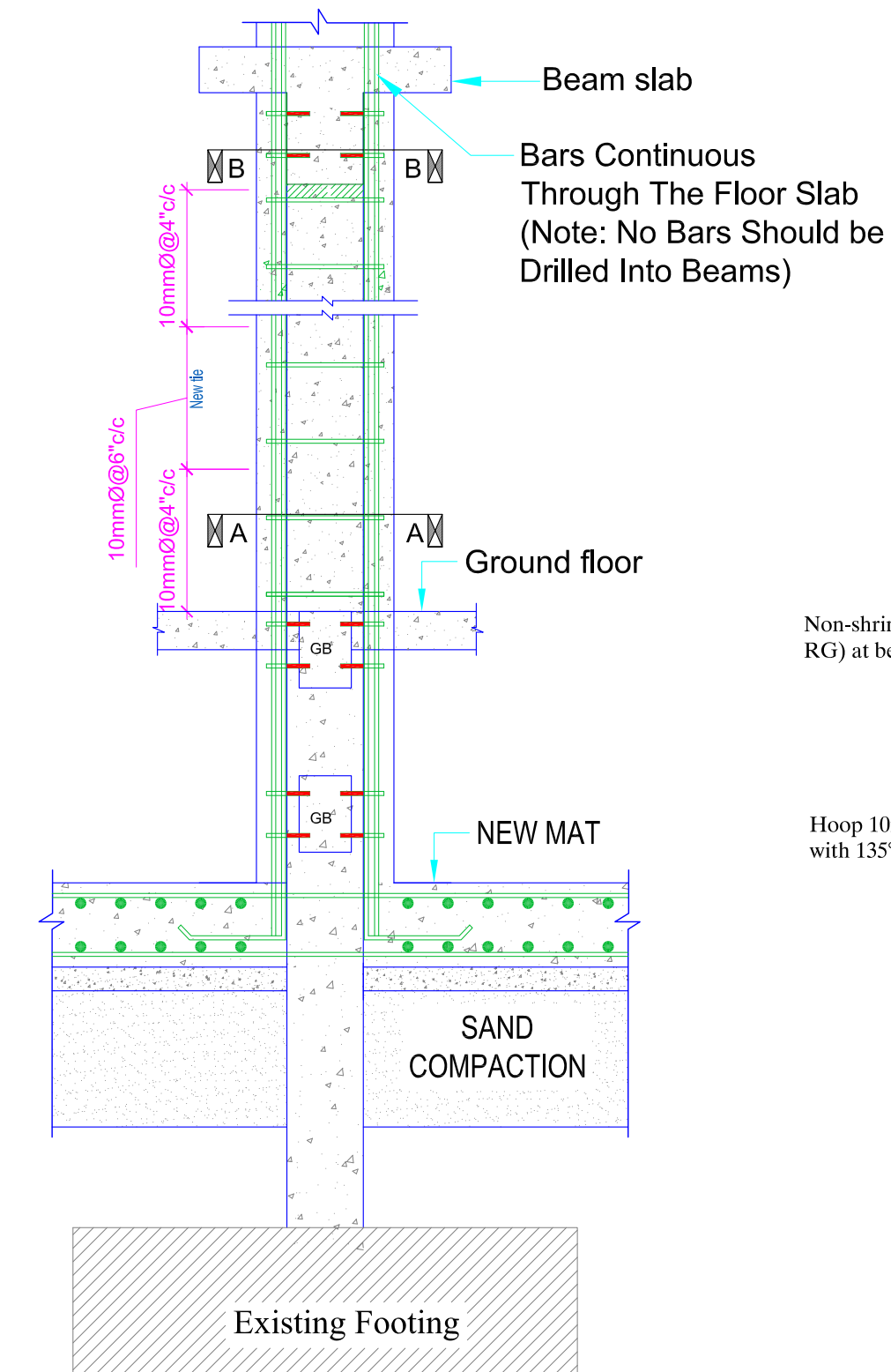


RETROFITTED COLUMN SCHEDULE

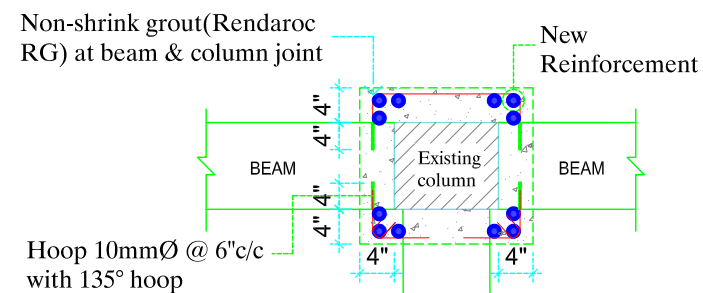
COLUMN ID	EXISTING COLUMN	EXISTING COLUMN AFTER CHIPPING	COLUMN JACKETING (UP TO PL LEVEL)	COLUMN JACKETING (GROUND & 1ST FLOOR)	COLUMN JACKETING (2ND TO ABOVE FLOOR)
RC4			 <p>New tie 10mm Ø @ 4" c/c</p> <p>Shear connector with "Anchor Adhesive Epoxy" 12" c/c alt (Embedment Length=5")</p> <p>Epoxy coating for bonding With "Concrete Bonding Adhesive"</p> <p>New Concrete with non-shrink micro concrete "Rendaroc RG"</p> <p>16-20 mm Ø</p>	 <p>New tie 10mm Ø @ 4"/6"/4" c/c</p> <p>Shear connector with "Anchor Adhesive Epoxy" 12" c/c alt (Embedment Length=5")</p> <p>Epoxy coating for bonding With "Concrete Bonding Adhesive"</p> <p>New Concrete with non-shrink micro concrete "Rendaroc RG"</p> <p>16-20 mm Ø</p>	 <p>New tie 10mm Ø @ 4"/6"/4" c/c</p> <p>Shear connector with "Anchor Adhesive Epoxy" 12" c/c alt (Embedment Length=5")</p> <p>Epoxy coating for bonding With "Concrete Bonding Adhesive"</p> <p>New Concrete with non-shrink micro concrete "Rendaroc RG"</p> <p>16-20 mm Ø</p>
RC5			 <p>New tie 10mm Ø @ 4" c/c</p> <p>Shear connector with "Anchor Adhesive Epoxy" 12" c/c alt (Embedment Length=5")</p> <p>Epoxy coating for bonding With "Concrete Bonding Adhesive"</p> <p>New Concrete with non-shrink micro concrete "Rendaroc RG"</p> <p>16-20 mm Ø</p>	 <p>New tie 10mm Ø @ 4"/6"/4" c/c</p> <p>Shear connector with "Anchor Adhesive Epoxy" 12" c/c alt (Embedment Length=5")</p> <p>Epoxy coating for bonding With "Concrete Bonding Adhesive"</p> <p>New Concrete with non-shrink micro concrete "Rendaroc RG"</p> <p>16-20 mm Ø</p>	 <p>New tie 10mm Ø @ 4"/6"/4" c/c</p> <p>Shear connector with "Anchor Adhesive Epoxy" 12" c/c alt (Embedment Length=5")</p> <p>Epoxy coating for bonding With "Concrete Bonding Adhesive"</p> <p>New Concrete with non-shrink micro concrete "Rendaroc RG"</p> <p>16-20 mm Ø</p>



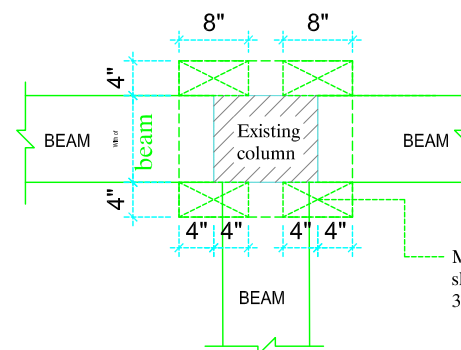
LONG SECTION OF COLUMN RETROFIT(TIE SPACING)

LIST CHEMICAL USED IN CONSTRUCTION

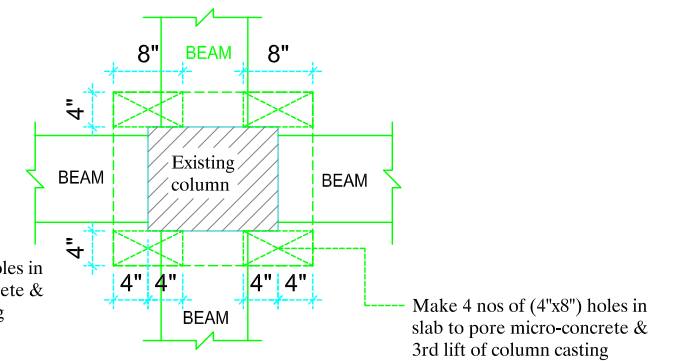
S.I	Name of Chemical	Used of Purpose	Standards
1	Anchor Adhesive Epoxy	Anchoring Adhesive.	BS 4551, 5080, 2782
2	Concrete Bonding Adhesive	New & Old Conctete Bonding Epoxy.	BS 6319
3	Nitobond SBR	Polymer Bonding Agent.	BS 6319
4	Conplast 337 & X421IC	Concrete Admixture.	BS 5075 & ASTM C494, IS 2645-203
5	Rendaroc RG	Micro Concrete.	BS 4551-80, ASTM C827-1987
6	Concure WB	Concrete Curing Compund.	ASTM C309-90
7	Reebol	Shutter Mould Release Agent.	-----
8	Rendaroc Plug	Shutter Leak Plugging Agent.	-----



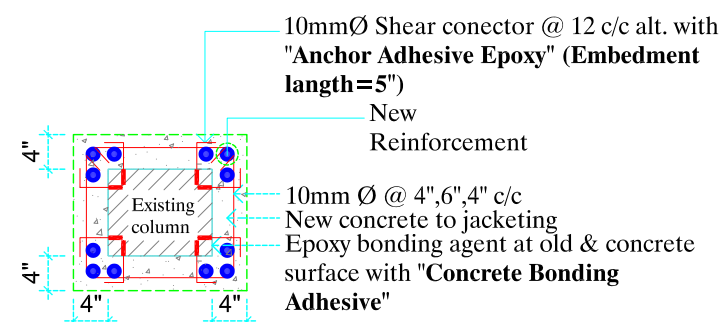
SECTION-A-A



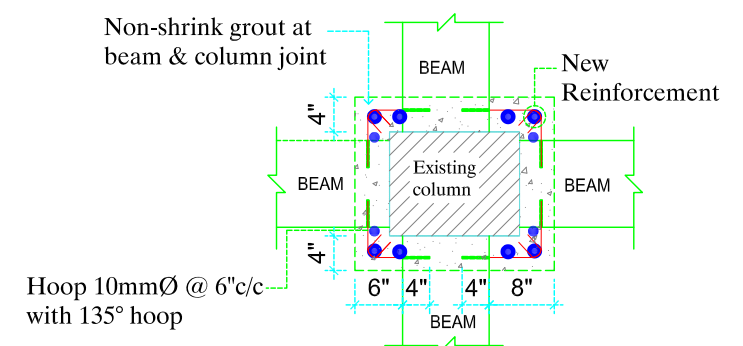
SECTION-A-A



SECTION-A-A



SECTION-B-B



SECTION-A-A