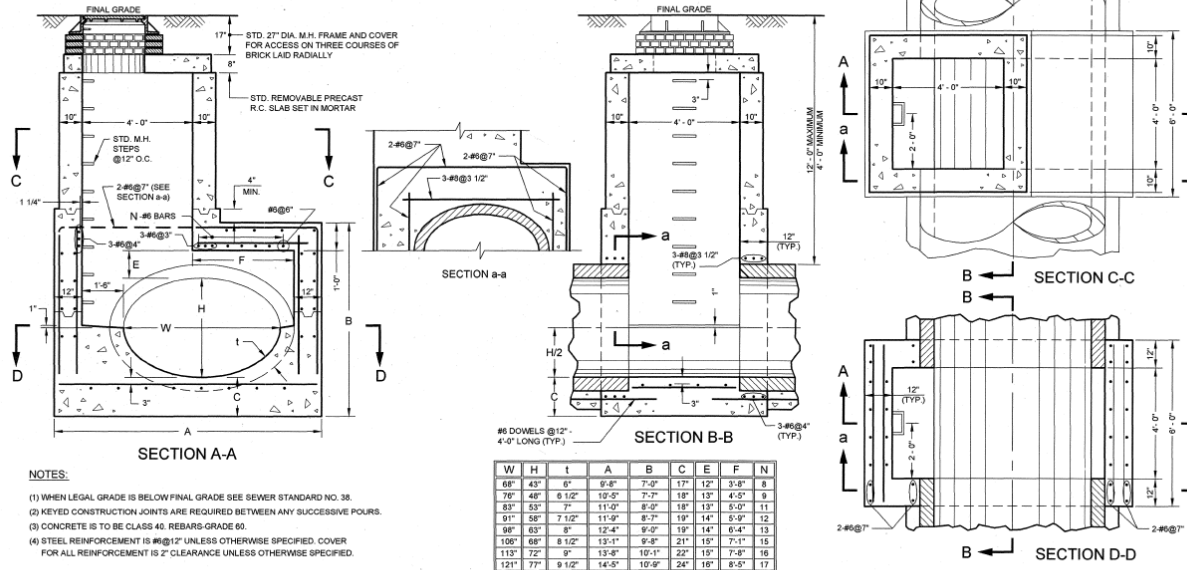


STANDARD FOR MANHOLE ON 68"W x 43"H TO 121"W x 77"H HORIZONTAL ELLIPTICAL PIPE SEWERS TYPE E-2 (12" MAX. COVER)



NOTES:

- (1) WHEN LEGAL GRADE IS BELOW FINAL GRADE SEE SEWER STANDARD NO. 38.
- (2) KEYED CONSTRUCTION JOINTS ARE REQUIRED BETWEEN ANY SUCCESSIVE POURS.
- (3) CONCRETE IS TO BE CLASS 40. REBARS GRADE 60.
- (4) STEEL REINFORCEMENT IS #6@12" UNLESS OTHERWISE SPECIFIED. COVER FOR ALL REINFORCEMENT IS 2" CLEARANCE UNLESS OTHERWISE SPECIFIED.

John W. Garm P.E.
ASSISTANT COMMISSIONER, DESIGN
DEPARTMENT OF DESIGN AND CONSTRUCTION

7/9/07
DATE

David J. Fine P.E.
DIRECTOR OF ENGINEERING
DEPARTMENT OF ENVIRONMENTAL PROTECTION

8/10/07
DATE