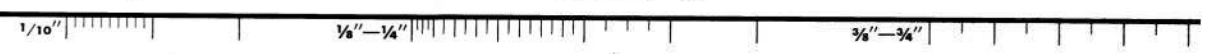
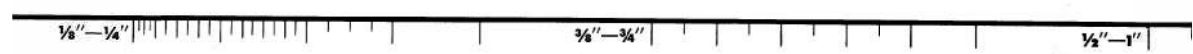
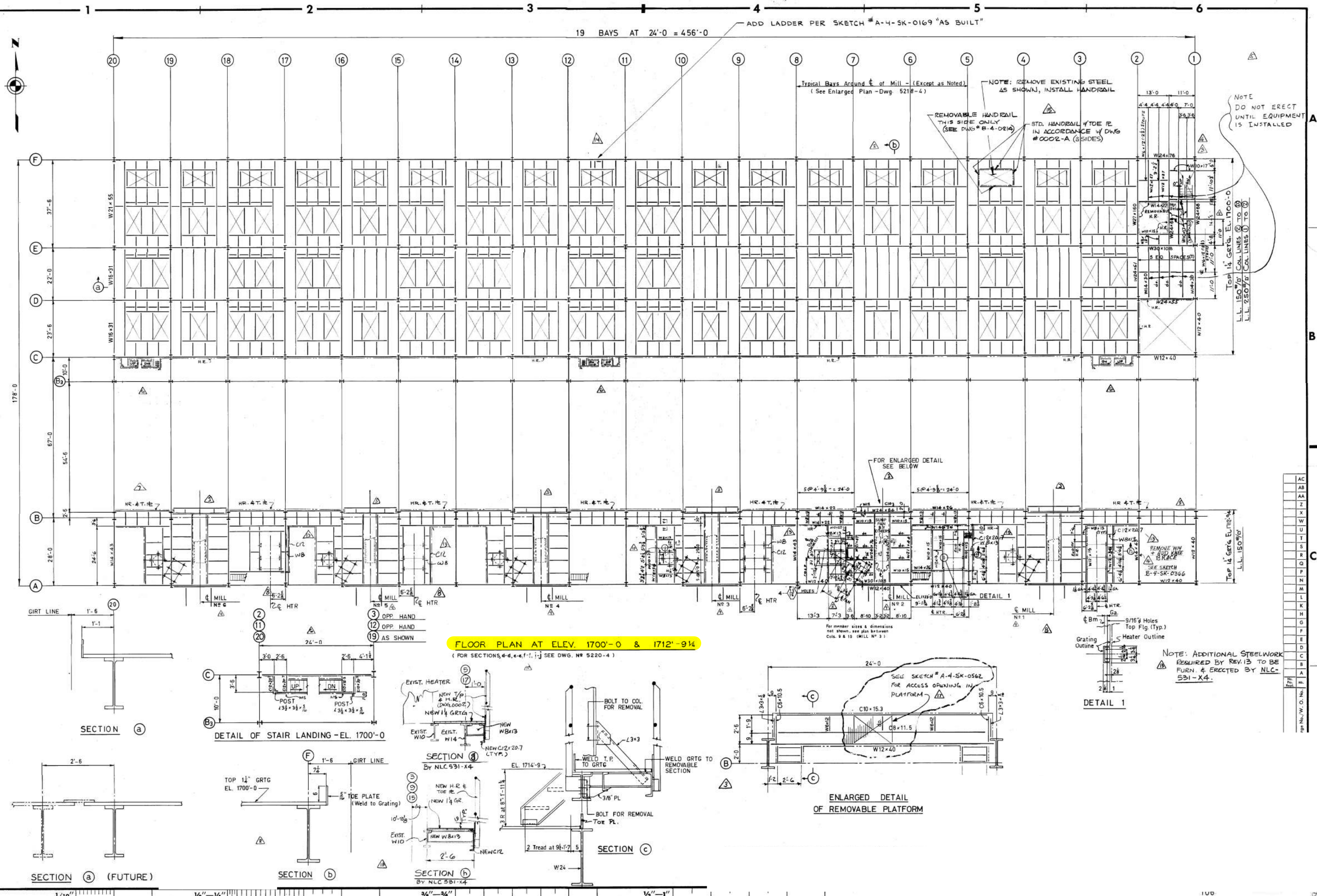


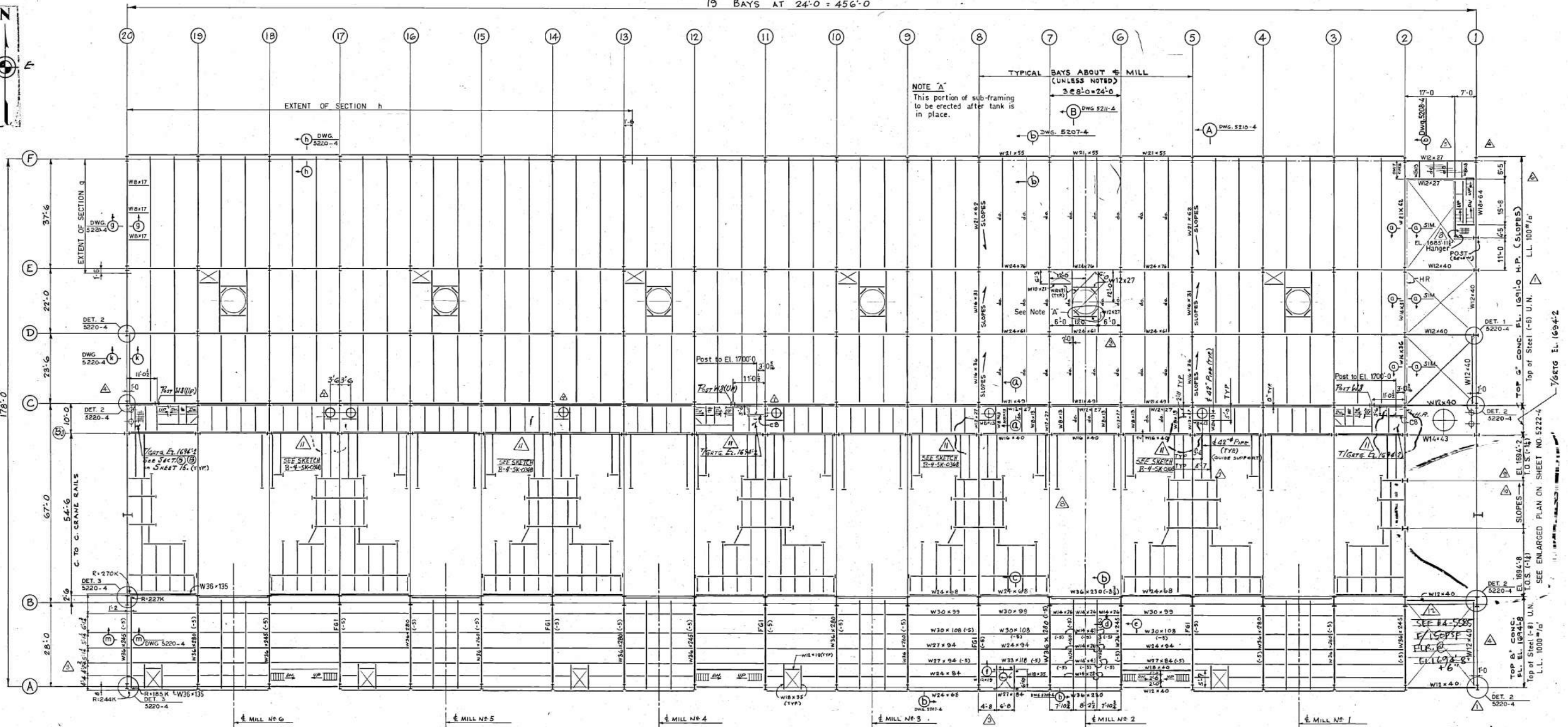
AC
AB
AA
Z
X
W
U
T
S
R
Q
P
N
M
L
K
H
G
F
E
D
C
B
A
1
2
3
4
5
6
7
8
9
10
11
12
13
14
15
16
17
18
19
20





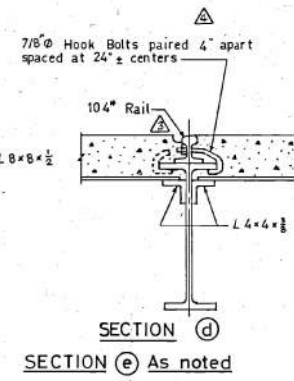
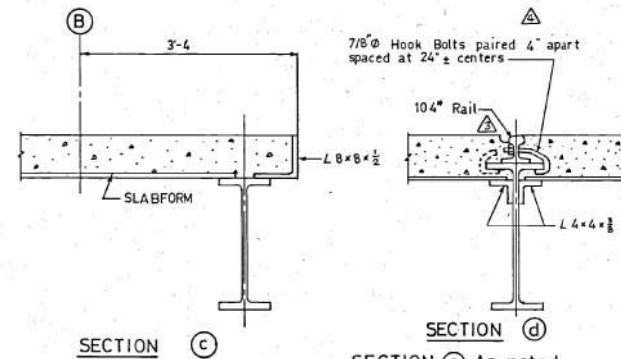
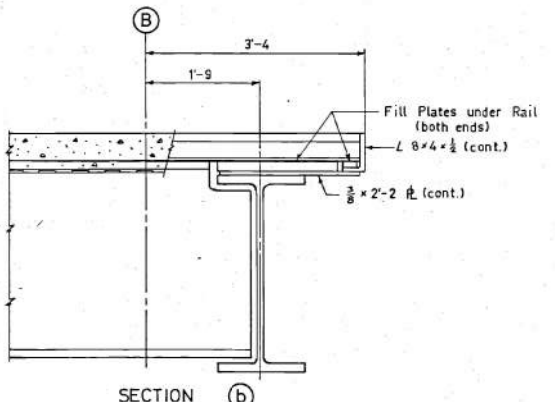
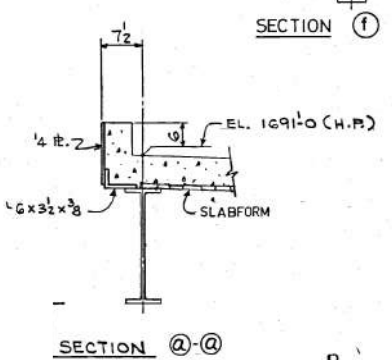
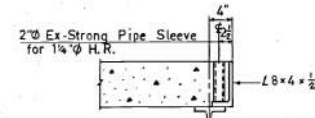


19 BAYS AT 24'-0" = 456'-0"



FLOOR PLAN AT ELEV. 1691'-0 (H.P.) & 1694'-8

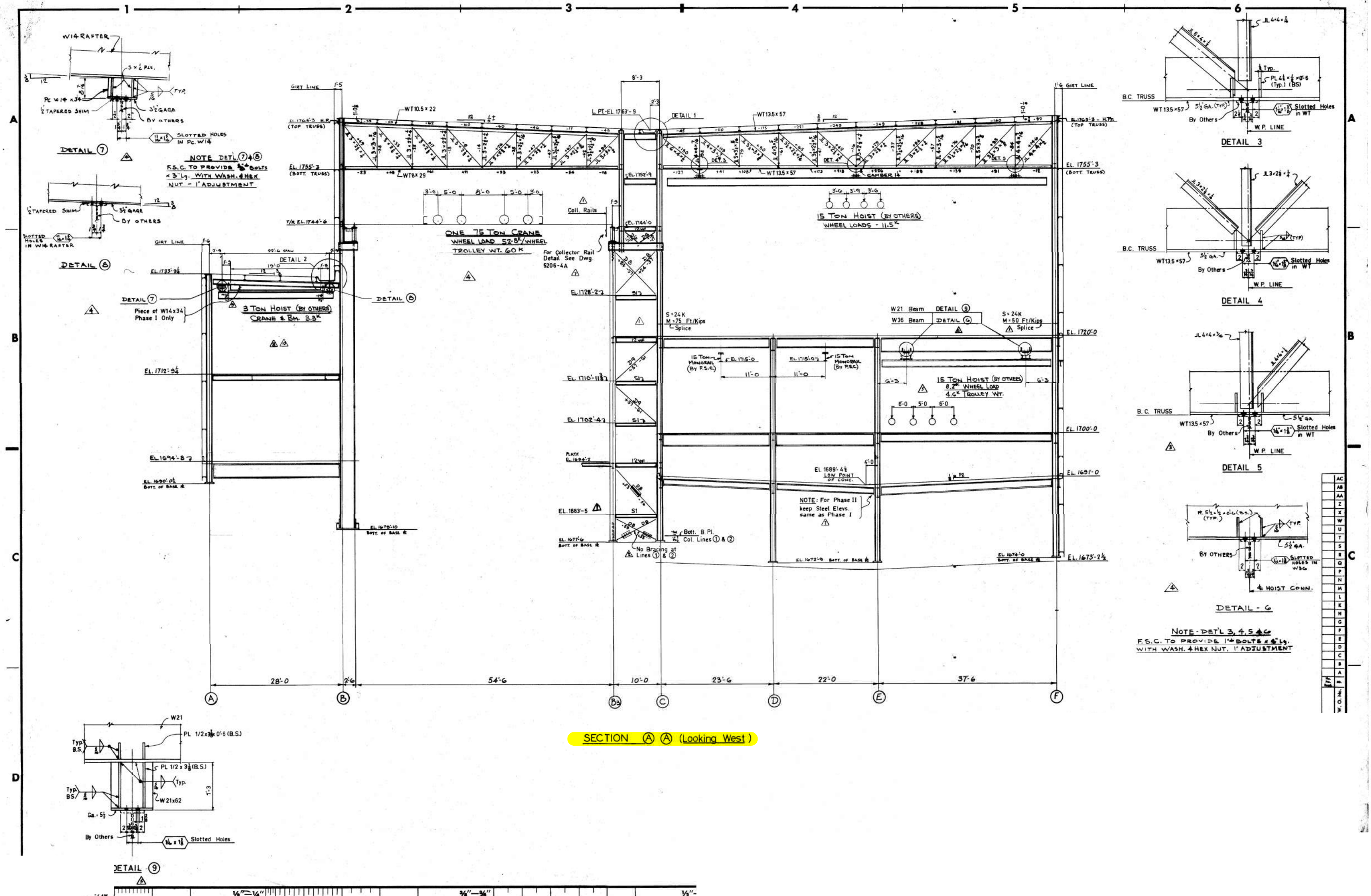
SLABFORM - EXTRA HEAVY DUTY 20 GA. GALVANIZED



FLOOR GIRDER SCHEDULE				
MARK	SPAN	MAX. MOM. FT. KIPS	MAX. SHEAR KIPS AT EA. END	REMARKS
FG1	26'-0"	2850	(N) 394 (S) 356	

REV. 11-1-76 FOR CONSTRUCTION HTP 671
NO CHANGES

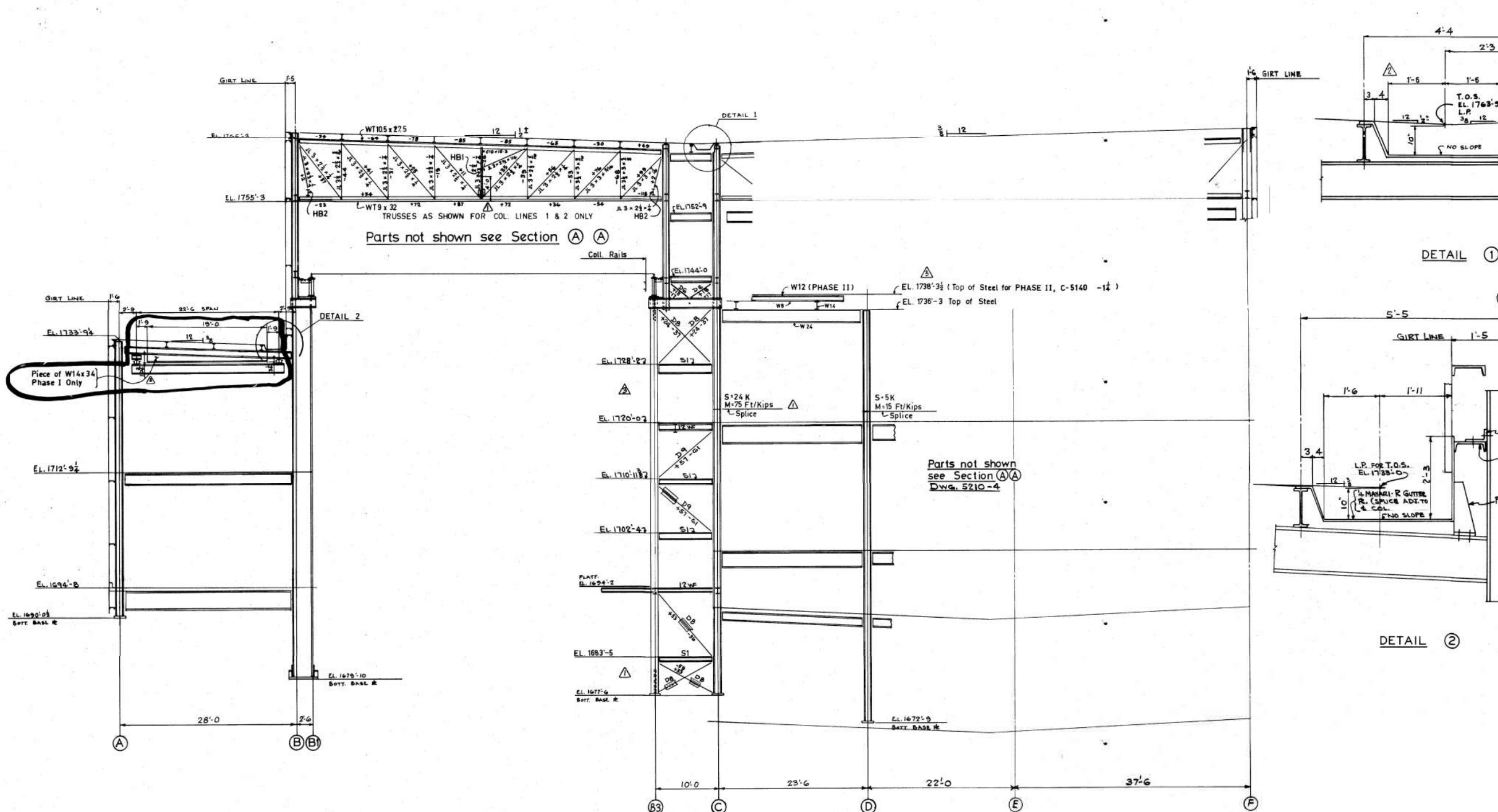
AC
AB
AA
Z
X
W
U
T
S
R
O
P
M
L
K
H
G
F
E
D
C
B
A



SECTION (A) (A) (Looking West)

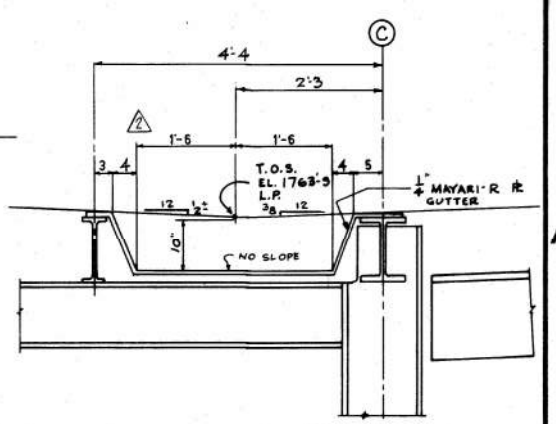
NOTE-DET'L 3, 4, 5 & 6
F.S.C. TO PROVIDE 1" BOLTS & 1" LG.
WITH WASH. & HEX NUT. 1" ADJUSTMENT

1 2 3 4 5 6

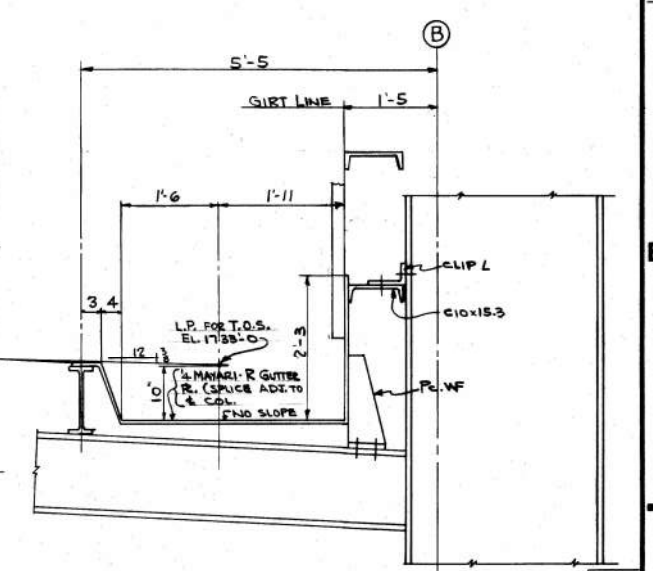


Parts not shown see Section (A) (A)

Parts not shown see Section (A) (A) DWG. 5210-4



DETAIL ①

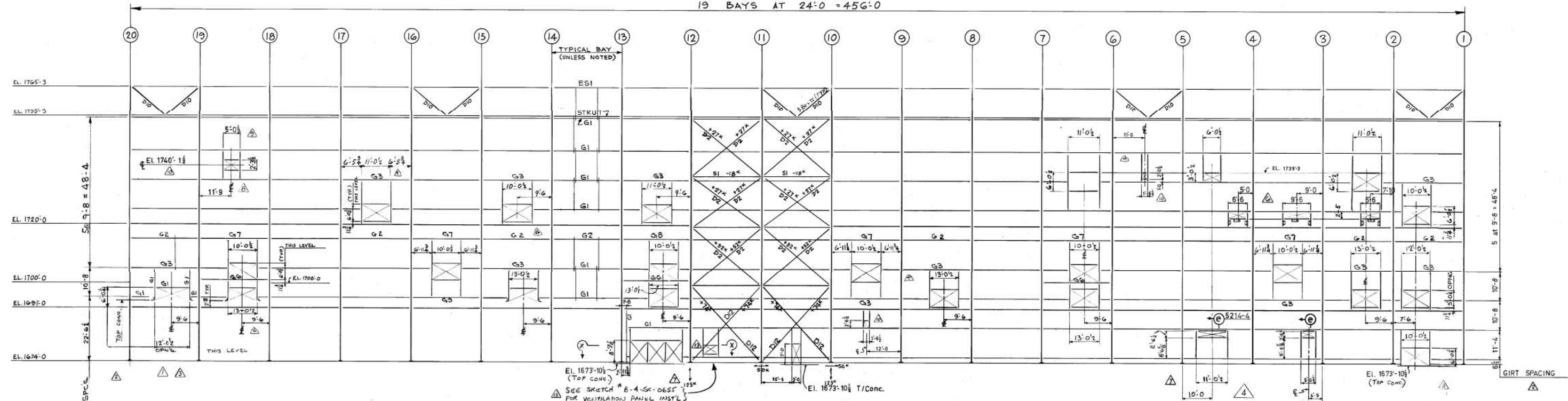


DETAIL ②

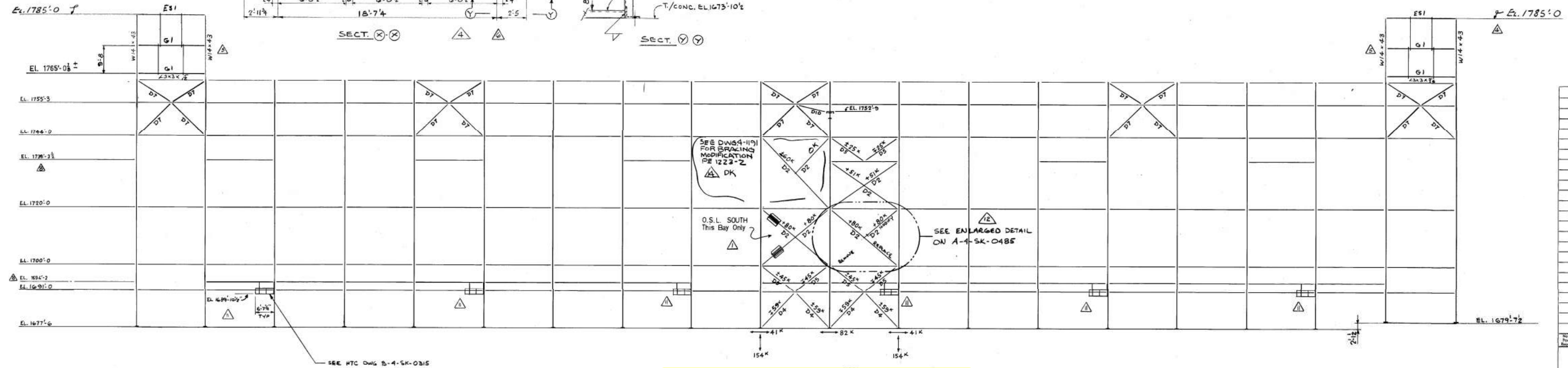
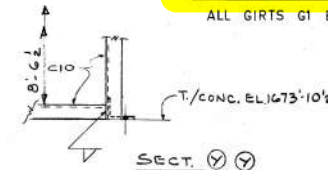
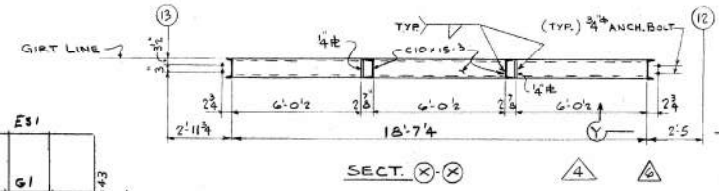
SECTION (B) (B)
(Looking West)

AC
AB
AA
Z
X
W
U
T
S
R
Q
P
N
M
L
K
H
G
F
E
D
C
B
A
1

19 BAYS AT 24'-0" = 456'-0"



ELEVATION ALONG LINE (F) (Looking North)
ALL GIRTS G1 EXCEPT AS NOTED

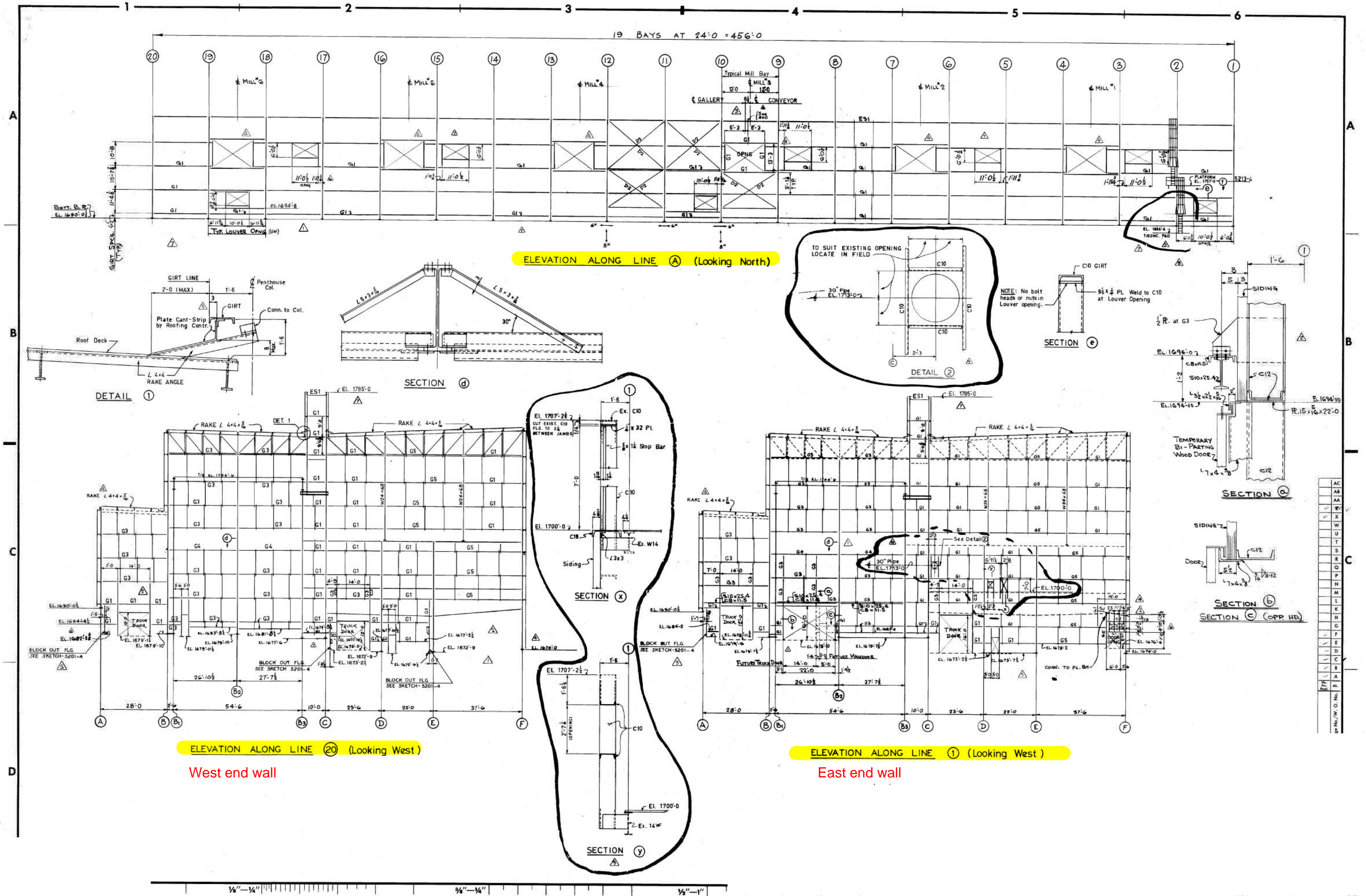


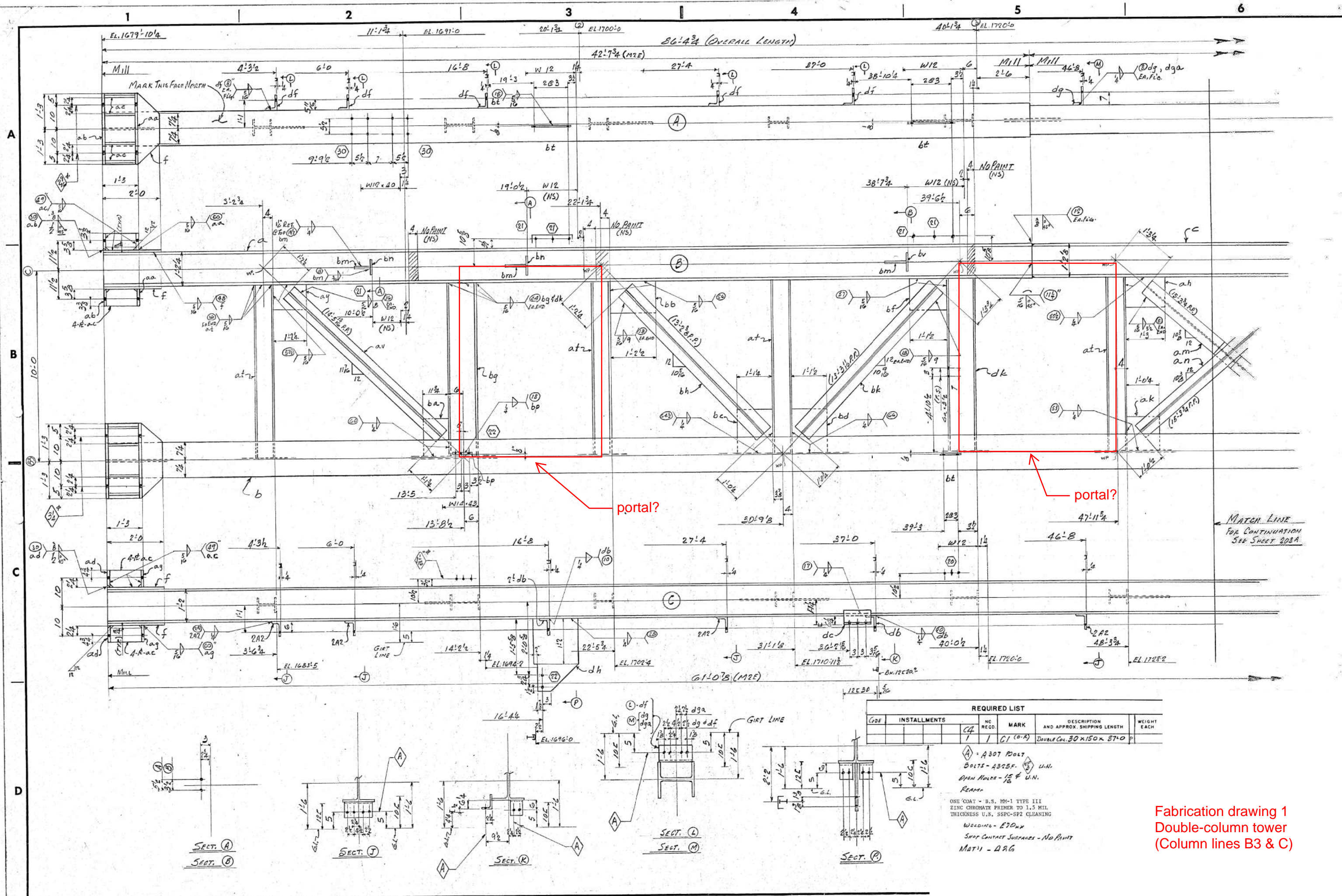
ELEVATION ALONG LINE (C) (Looking North)

NOTES FOR BRACING

- LOADING CONDITIONS:
 - 100% LONGITUDINAL WIND ONLY.
 - 50% LONGITUDINAL WIND PLUS LARGER OF:
 - LONGITUDINAL THRUST OF CRANE.
 - BUMPER FORCE OF CRANE.
 - NO LONGITUDINAL WIND, BUT THE LARGER OF:
 - LONGITUDINAL THRUST OF CRANE.
 - BUMPER FORCE OF CRANE.
- WHERE LOADINGS GOVERN, THE MEMBER FORCES AND COLUMN BASE REACTIONS SHOWN ALREADY REFLECT THE 33% REDUCTION ALLOWED FOR WIND-RELATED LOADINGS.
- COLUMN BASE REACTIONS SHOWN ARE AS INDUCED BY BRACING ALONE.

AC
AB
AA
Z
X
W
U
T
S
R
Q
P
N
M
L
K
H
G
F
E
D
C
B
A
1
2
3
4
5
6
7
8
9
10
11
12
13
14
15
16
17
18
19





REQUIRED LIST					
QTY	INSTALLMENTS	NO. REQD.	MARK	DESCRIPTION AND APPROX. SHIPPING LENGTH	WEIGHT EACH
1	1	1	C1 (D-R)	DOUBLE COL. 30 X 150 X 87'0"	P

A = A 307 PDLT
 BOLTS - A307F. U.N.
 OPEN HOLES - 1/8" U.N.
 REAMS
 ONE COAT - B.S. NM-1 TYPE III
 ZINC CHROMATE PRIMER TO 1.5 MIL
 THICKNESS U.N. SSPC-SP2 CLEANING
 WELDING - E70xx
 SHOT CONTACT SURFACES - NO PAINT
 MAT'L - A 36

Fabrication drawing 1
 Double-column tower
 (Column lines B3 & C)

