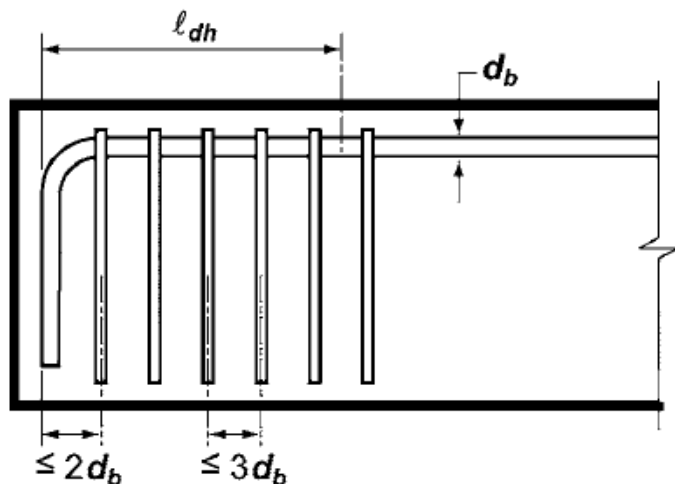
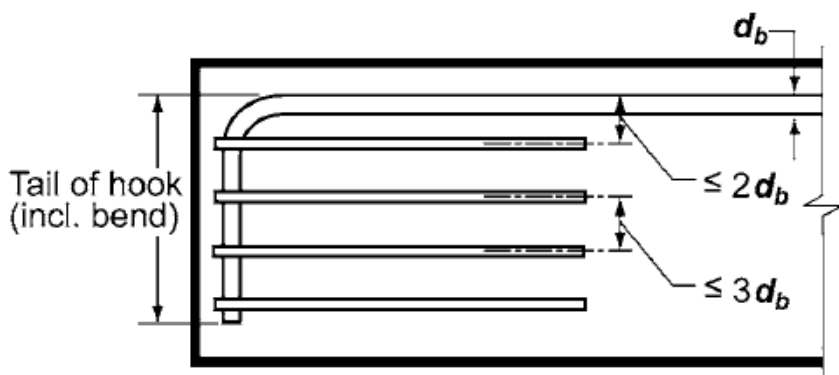


# COMMENTARY



*Fig. R12.5.3(a)—Ties or stirrups placed perpendicular to the bar being developed, spaced along the development length  $\ell_{dh}$ .*



*Fig. R12.5.3(b)—Ties or stirrups placed parallel to the bar being developed, spaced along the length of the tail extension of the hook plus bend.*