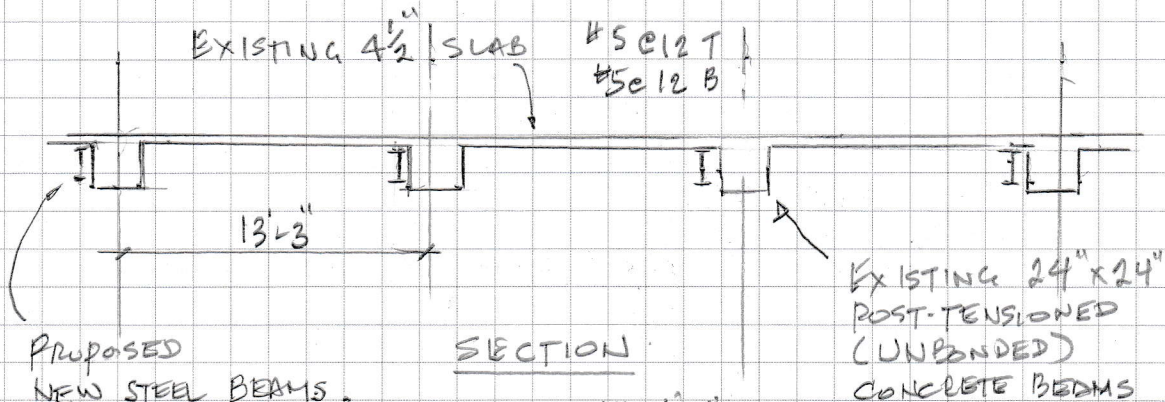


PARKING STRUCTURE

L.L. = 50 PSF
SUPERIMPOSED D.L. = 30 PSF



PROPOSED
NEW STEEL BEAMS.
TOTAL LOAD
DEFLECTION OF
NEW STEEL BEAMS
= SPAN/240

QUESTION:

IF ALL THE TENDONS IN THE EXISTING P.T. BEAM CORRODE AWAY, CAN THE PROPOSED NEW STEEL BEAMS WORK, GIVEN THAT THE EXISTING BOTTOM BARS IN THE SLAB ARE NOT CONTINUOUS FROM STEEL BEAM TO STEEL BEAM?

