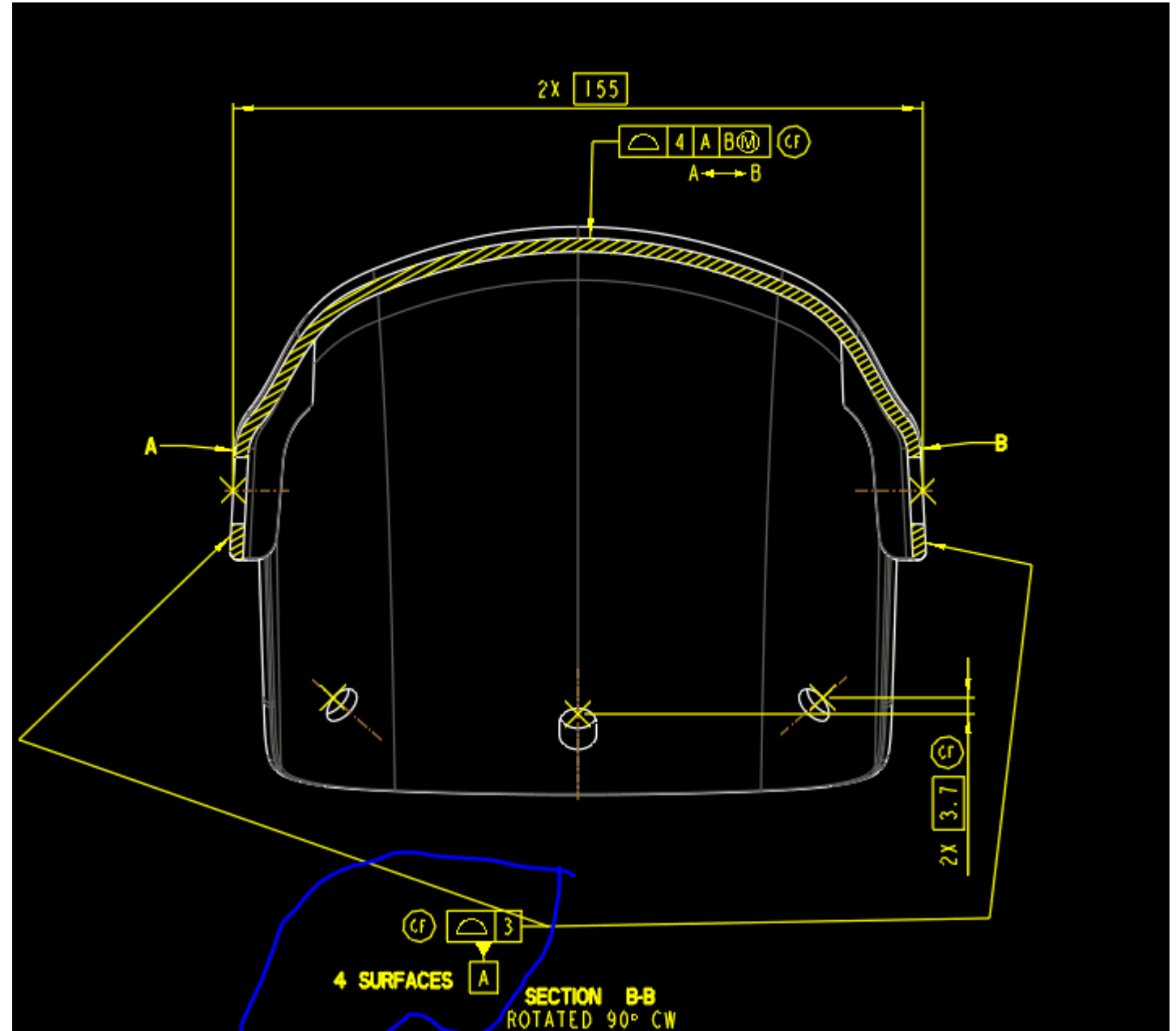
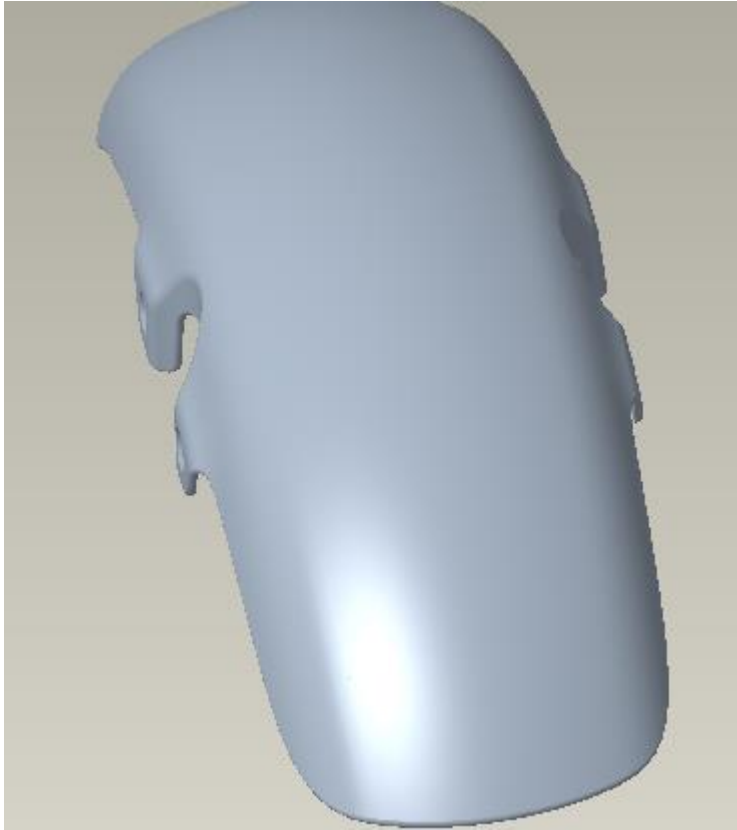
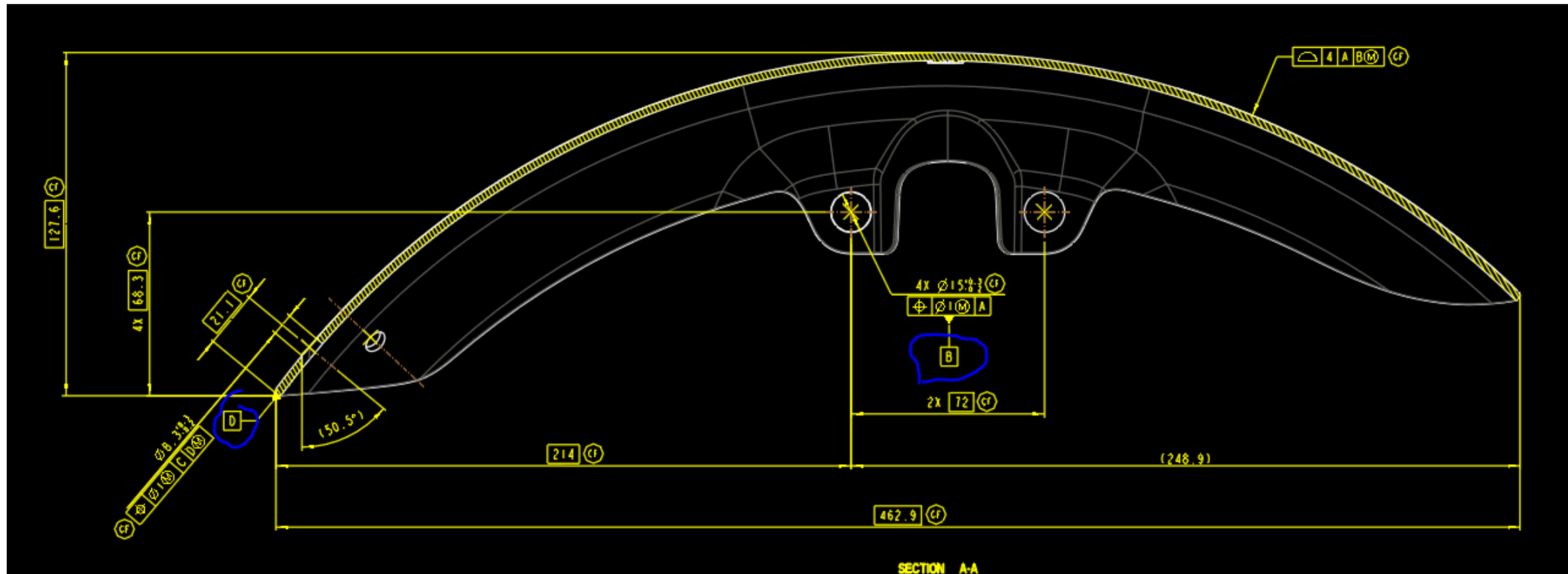
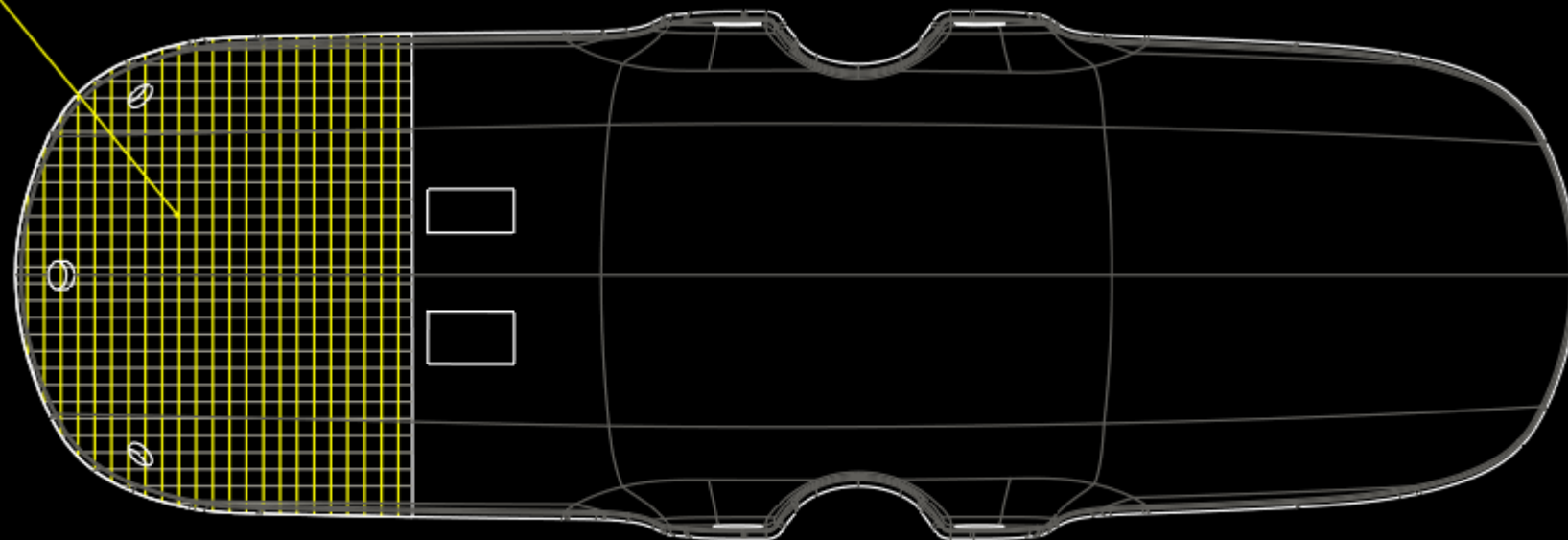


1. I believe Datum targets is make sense for this but can we accept this scenario also ?



2. 4X Datum B is applied but in 4 holes which hole axis is oriented with particular datum A face is not clear
3. Can we mention individually for datum A and B ?if not pls suggest better method
4. Datum D is applied at feature but datum feature is at MMB can we accept this ?





BOTTOM VIEW