

ELEV. = 125'-4"
TOP OF ROOF

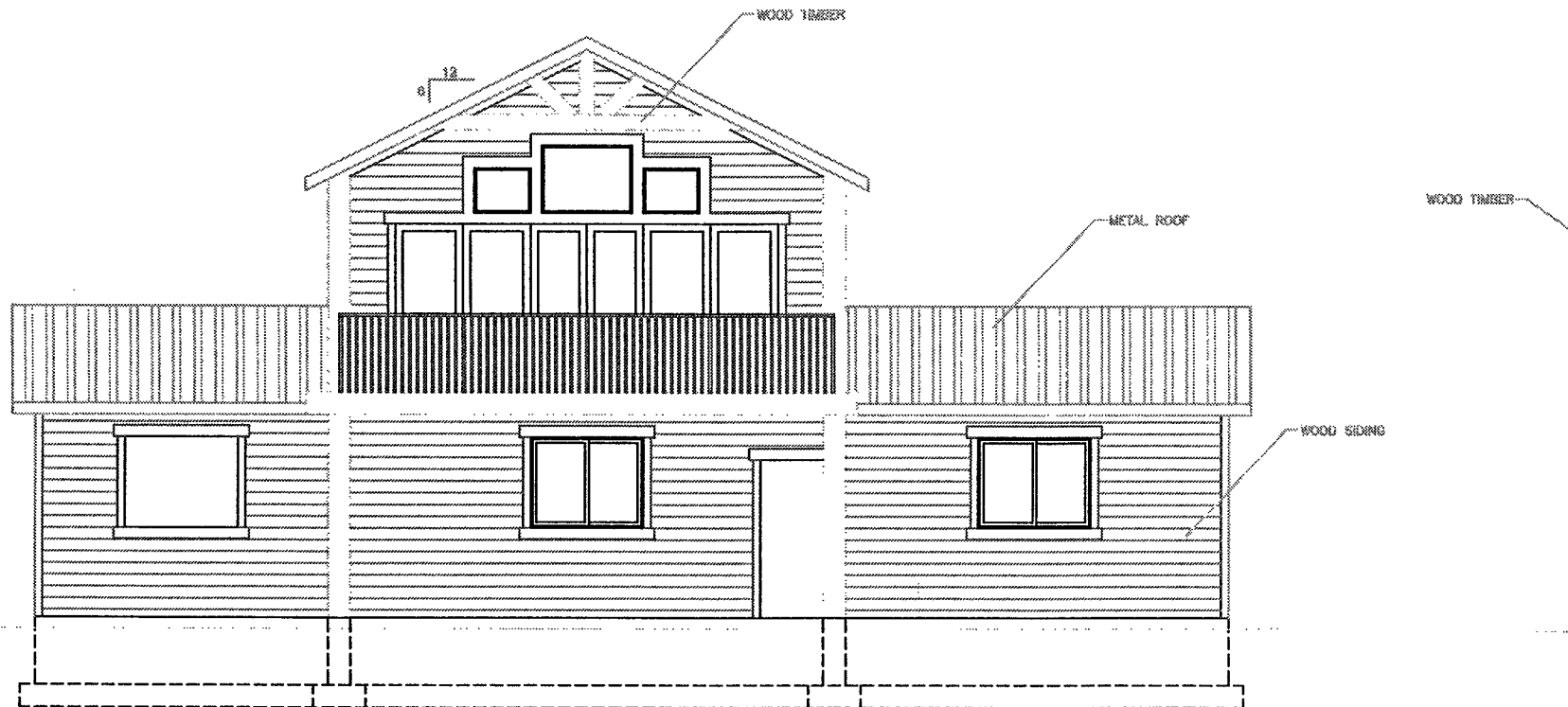
ELEV. = 114'-8"
TOP OF ROOF

ELEV. = 113'-0"
TOP OF PLATE

ELEV. = 91'-4"
FINISH FLOOR

ELEV. = 100'-0"
FINISHED GRADE

ELEV. = 81'-0"
TOP OF FOOTING



FRONT ELEVATION

SCALE: 1/4" = 1'

ELEV. = 125'-4"
TOP OF ROOF

ELEV. = 114'-8"
TOP OF ROOF

