

Plotting Parameters
Plotted By: ncasale
Design File: 192810377.dgn
Printed: 5/15/2020 12:11:44 PM

DOCUMENT NAME: 192810377-cpb-ST-43-dry_standpipe_1.dgn

DESIGN SUPERVISOR C. CARTER
JOB MANAGER R. CARTWRIGHT
DESIGN K. BONAGURA
CHECK E. HILLIARD
DRAFTING N. CASALE
CHECK C. CARTER
PROJECT MANAGER L. WESTRICK

PEDESTRIAN FENCE OPENING
(SEE DETAIL D, DRAWING ST-44)

"FDC" SIGN PANEL "A" (SEE DETAIL E, DRAWING ST-47)
MOUNT TO INSIDE OF FENCE

2" DUAL "FDC"

PEDESTRIAN FENCING

"FDC" SIGN PANEL "A" (SEE DETAIL E, DRAWING ST-44)
MOUNT TO INSIDE OF FENCE

2" DUAL "FDC"

DIMENSION "A"

3'-6"

DIMENSION "B"

BRACKET (TYP.) (SEE DETAIL A,
DRAWING ST-44)

DIMENSION "C"

DIMENSION "D"

4" DIP ELBOW (TYP.)

4" GROOVED DIP
DRY HYDRANT STANDPIPE

4" STORZ CONNECTION
(PERPENDICULAR TO
FACE OF PIER)

DIMENSION "E"

FINISH GRADE

BRACKET (SEE DETAIL A,
DRAWING ST-44)

4" GROOVED DIP
DRY HYDRANT STANDPIPE

4" STORZ CONNECTION
(PERPENDICULAR TO
FACE OF PIER)

"FDC" SIGN PANEL "B"
(SEE DETAIL E, DRAWING ST-44)

3'-6"

PIER SIDE VIEW

PIER ELEVATION

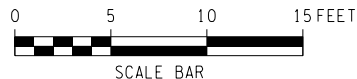
NOTES:

1. REFER TO SHEET ST-44 FOR DRY STANDPIPE DETAILS.
2. REFER TO SHEET ST-03 AND ST-04 FOR DRY STANDPIPE LOCATIONS
3. ALL DRY STANDPIPE SHALL BE 4" GROOVED DUCTILE IRON PIPE (DIP).
4. COUPLINGS SHALL BE PROVIDED AT ALL GROOVED CONNECTIONS.
5. PROVIDE DRY STANDPIPES AT PIERS 1 TO 4, 7 AND 8.
6. EXISTING PAINTED MURALS SHALL BE PROTECTED DURING CONSTRUCTION OPERATIONS. ANY DAMAGE SHALL BE REPAIRED BY THE CONTRACTOR AT NO ADDITIONAL COST TO THE STATE.

PIER KEYPOINT DIMENSIONS (APPROX.)					
	DIMENSION (MEASURED AS HEIGHT ABOVE FINISH GRADE)				
	A	B	C	D	E
PIER 1	28.8	20.3	12.33	7.9	3.5
PIER 2	34.8	26.3	18.8	14.7	3.5
PIER 3	37.6	29.2	21.7	19.2	3.5
PIER 4	40.3	32.0	25.2	21.0	3.5
PIER 7	38.4	29.9	23.6	18.7	3.5
PIER 8	30.5	22.5	15.0	10.3	3.5

NOTE:

ELEVATION TABLE IS PROVIDED FOR BIDDING PURPOSES ONLY. CONTRACTOR SHALL VERIFY ALL DIMENSIONS IN THE FIELD.



AFFIX SEAL: ON:	ALTERED BY: ON:

AS-BUILT REVISIONS
DESCRIPTION OF ALTERATIONS:

THE ALBANY SKYWAY
ROUTE 9 & I-787 SB RAMP
F.I.C. 69-4, INTERSTATE ROUTE CONNECTION 540
CITY OF ALBANY
COUNTY: ALBANY

REGION: 1

PIN 1051.82

BRIDGES
BIN 109288 A
BIN 109288 B

CULVERTS

ALL DIMENSIONS IN ft UNLESS OTHERWISE NOTED

DRY STANDPIPE DETAILS
(SHEET 1 OF 2)

CONTRACT NUMBER
D264220

DRAWING NO. ST-43
SHEET NO. 268

IT IS A VIOLATION OF LAW FOR ANY PERSON, UNLESS THEY ARE ACTING UNDER THE DIRECTION OF A LICENSED PROFESSIONAL ENGINEER, ARCHITECT, LANDSCAPE ARCHITECT, OR LAND SURVEYOR, TO ALTER AN ITEM IN ANY WAY. IF AN ITEM BEARING THE STAMP OF A LICENSED PROFESSIONAL IS ALTERED, THE ALTERING ENGINEER, ARCHITECT, LANDSCAPE ARCHITECT, OR LAND SURVEYOR SHALL STAMP THE DOCUMENT AND INCLUDE THE NOTATION "ALTERED BY" FOLLOWED BY THEIR SIGNATURE, THE DATE OF SUCH ALTERATION, AND A SPECIFIC DESCRIPTION OF THE ALTERATION.

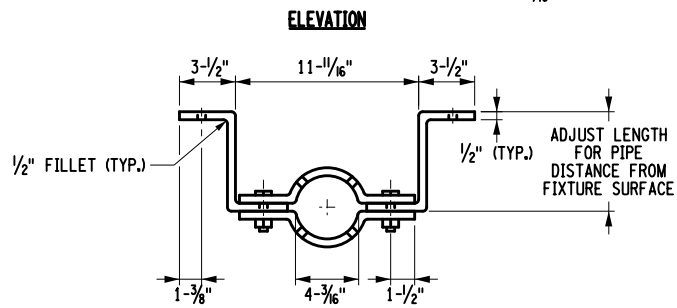
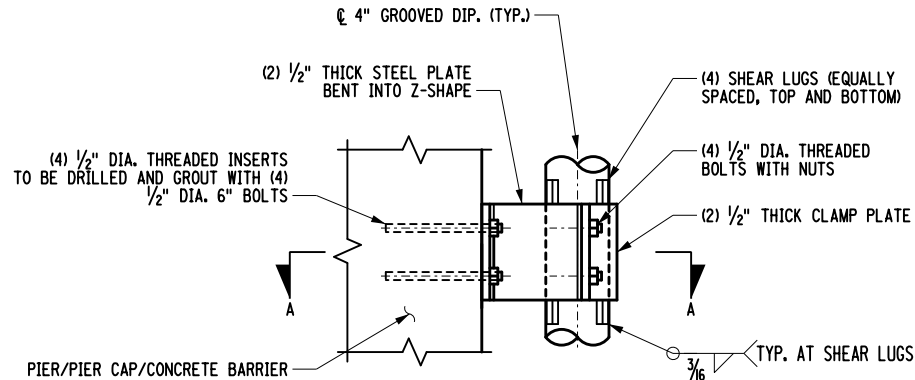


Department of
Transportation

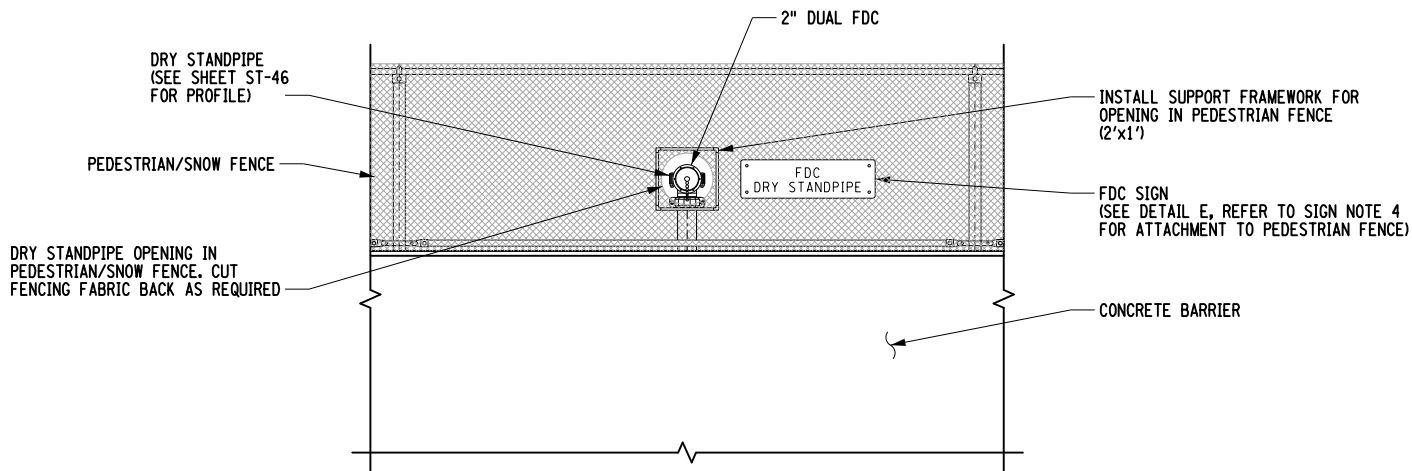
Plotting Forometers
ncasale
Upd 1928103776structuraldesigndrawing5192810377.cpb-ST-44-dry standpipe 2.dgn
1211155 PM
5/15/2020
Ported

DOCUMENT NAME: 192810377-cpb-ST-44-dry standpipe 2.dgn

DESIGN SUPERVISOR C. CARTER PROJECT MANAGER L. WESTRICK
JOB MANAGER R. CARTWRIGHT
DESIGN K. BONAGURA
CHECK E. HILLIARD
CHECK N. CASALE
DRAFTING
CHECK C. CARTER



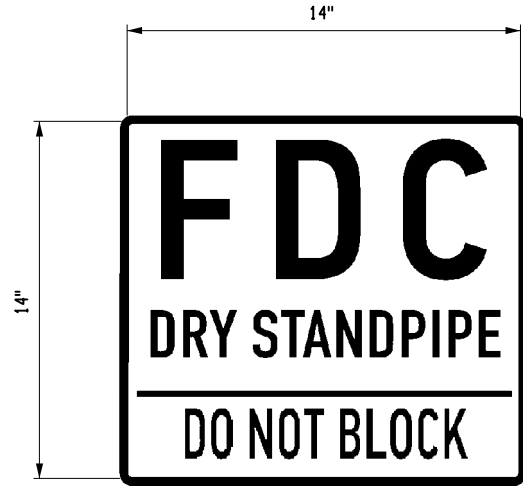
DETAIL A
PLATE BRACKET
NO SCALE



DETAIL D
PEDESTRIAN FENCE OPENING
NO SCALE



SIGN PANEL "A" DETAIL AT SKYWAY TOP OF DECK



SIGN PANEL "B" DETAIL AT GROUND CONNECTION

SIGN NOTES:

- FABRICATE AND INSTALL ALL SIGNS IN ACCORDANCE WITH STANDARD SPECIFICATIONS SECTION 645 SIGNS, MATERIALS SUBSECTIONS, AND MATERIALS FROM APPROVED PRODUCT VENDORS.
- SIGN PANELS SHALL BE MIN 1/8" THICK ALUMINUM ASTM B209M 60611-T6 OR EQUIVALENT ALLOY AND TEMPER MEETING THE REQUIREMENTS OF MATERIALS 715-04 WROUGHT ALUMINUM.
- REFLECTORIZED SHEETING SHALL BE ASTM TYPE III (CLASS B MATERIAL DESIGNATION 730-05.02) REFLECTIVE SHEET BACKGROUND COLOR SHALL BE RED WITH REFLECTORIZED RED LETTERS AND STANDARD BORDERS OF EQUAL INTENSITY.
- AT THE TOP OF DECK, THE SIGN PANEL "A" SHALL CONSIST OF 10" HIGH BY 14" WIDE PANEL WITH 5" HIGH BLOCK LETTERS READING "FDC" AND 2" HIGH BLOCK LETTERS READING "DRY STANDPIPE", AND RED REFLECTIVE LETTERS ON A WHITE BACKGROUND. SIGN PANELS "A" SHALL BE AFFIXED TO PEDESTRIAN/SNOW FENCE FABRIC USING SIGN MOUNTING BRACKETS INSTALLED VERTICALLY WITH 1/2" BOLTS, NUTS, AND WASHERS. MOUNTING BRACKETS SHALL BE LOCATED ON EITHER SIDE OF THE PEDESTRIAN FENCING FABRIC.
- AT THE BOTTOM OF THE PIER OR PARKING LOT, SIGN PANELS "B" SHALL CONSIST OF 14" HIGH BY 14" WIDE PANELS WITH 5" HIGH BLOCKET LETTERS READING "FDC", 2" HIGH BLOCK LETTERS READING "DRY STANDPIPE", 2" HIGH BLOCK LETTERS READING "DO NOT BLOCK", AND RED REFLECTIVE LETTERS ON A WHITE BACKGROUND. SIGN PANELS "B" SHALL BE AFFIXED TO THE PIERS USING CONCRETE EXPANSION ANCHORS.

DETAIL E
DRY STANDPIPE SIGNAGE
NO SCALE



AFFIX SEAL: ON:

ALTERED BY: ON:

AS-BUILT REVISIONS DESCRIPTION OF ALTERATIONS:	THE ALBANY SKYWAY	PIN 1051.82	BRIDGES BIN 109288 A BIN 109288 B	CULVERTS	ALL DIMENSIONS IN ft UNLESS OTHERWISE NOTED	CONTRACT NUMBER D264220
	ROUTE 9 & I-787 SB RAMP				DRY STANDPIPE DETAILS (SHEET 2 OF 2)	DRAWING NO. ST-44 SHEET NO. 269
F.I.C. 69-4, INTERSTATE ROUTE CONNECTION 540						
CITY OF ALBANY						
COUNTY: ALBANY REGION: 1 UTILITY QUALITY LEVEL - D						
IT IS A VIOLATION OF LAW FOR ANY PERSON, UNLESS THEY ARE ACTING UNDER THE DIRECTION OF A LICENSED PROFESSIONAL ENGINEER, ARCHITECT, LANDSCAPE ARCHITECT, OR LAND SURVEYOR, TO ALTER AN ITEM IN ANY WAY. IF AN ITEM BEARING THE STAMP OF A LICENSED PROFESSIONAL IS ALTERED, THE ALTERING ENGINEER, ARCHITECT, LANDSCAPE ARCHITECT, OR LAND SURVEYOR SHALL STAMP THE DOCUMENT AND INCLUDE THE NOTATION "ALTERED BY" FOLLOWED BY THEIR SIGNATURE, THE DATE OF SUCH ALTERATION, AND A SPECIFIC DESCRIPTION OF THE ALTERATION.						
						Department of Transportation

FILE NAME = X73124.FSP-02 gen.notes.dgn
DATE/TIME = 17-FEB-2017 16:21
USER = mdepinio

DESIGN SUPERVISOR D. WAN
JOB MANAGER M. MOHRMANN
DESIGN D. DELLE DONNE
CHECK R. ROMAN
DRAFTING R. GRILLO
CHECK E. RECIO
PROJECT MANAGER D. WAN

GENERAL NOTES:

- ALL WORK AND MATERIALS NOT SPECIFICALLY DESCRIBED, BUT REQUIRED FOR A COMPLETE AND PROPER INSTALLATION OF THE FIRE PROTECTION SYSTEM SHALL BE PROVIDED BY FIRE PROTECTION CONTRACTOR AND SHALL BE NEW, FIRST QUALITY OF THEIR RESPECTIVE KINDS, AND SUBJECT TO THE APPROVAL BY THE RESIDENT ENGINEER.
- WHERE, DUE TO UNION REGULATIONS OR TRADE AGREEMENTS, ANY OF THE WORK SHOWN ON THE DRAWINGS OR DESCRIBED IN SPECIFICATIONS IS NOT CONSIDERED FIRE PROTECTION CONTRACTOR'S WORK, HE SHALL SUBCONTRACT THIS WORK IN QUESTION, BUT FIRE PROTECTION CONTRACTOR SHALL BE HELD RESPONSIBLE FOR THE COMPLETE INSTALLATION.
- DRAWINGS AND SPECIFICATIONS ARE INTENDED TO BE FULLY COOPERATIVE AND TO AGREE, BUT SHOULD ANY DISCREPANCY OR APPARENT DIFFERENCE OCCUR BETWEEN DRAWINGS AND SPECIFICATIONS OR SHOULD OCCUR IN THE WORK OF OTHERS AFFECTING THE WORK, THE FIRE PROTECTION CONTRACTOR SHALL NOTIFY THE RESIDENT ENGINEER AT ONCE. IF FIRE PROTECTION CONTRACTOR PROCEEDS WITH THE WORK AFFECTED WITHOUT INSTRUCTIONS FROM THE RESIDENT ENGINEER, HE SHALL MAKE GOOD ANY RESULTANT DAMAGE OR DEFECT. ALL MISUNDERSTANDINGS OF DRAWINGS AND SPECIFICATIONS SHALL BE CLARIFIED BY THE RESIDENT ENGINEER.
- PIPING AND FITTINGS SHALL BE ERECTED SO THAT THE ENTIRE SYSTEM MAY BE THOROUGHLY DRAINED.
- INSTALL O.S.&Y. TYPE GATE VALVES IN HORIZONTAL POSITION WITH STEMS POINTED UP OR IN VERTICAL POSITION WHERE POSSIBLE, BUT IN NO CASE WITH STEMS POINTED BELOW HORIZONTAL. ALL FIRE PROTECTION SYSTEMS SHALL BE TESTED IN THE PRESENCE OF THE OWNER OR HIS REPRESENTATIVES AND THE LOCAL AUTHORITIES HAVING JURISDICTION OF THE WORK TO BE TESTED, AS MAY BE DIRECTED AT LEAST 72 HOURS NOTICE SHALL BE GIVEN IN ADVANCE OF ALL TESTS.
- THE WORK OF THIS CONTRACTOR SHALL INCLUDE THE FURNISHING OF ALL TESTING INSTRUMENTS, GAUGES, PUMPS AND OTHER EQUIPMENT REQUIRED OR NECESSARY FOR TESTS, REQUIRED BY LAWS, RULES AND REGULATIONS AND AS SPECIFIED.
- THE CONTRACTOR SHALL PROVIDE ALL ADDITIONAL TESTS AND REQUIRED EQUIPMENT REQUIRED BY LOCAL INSPECTORS AND ALL OTHER AUTHORITIES HAVING JURISDICTION, AT NO ADDITIONAL COST TO THE NYSDOT.
- ALL DEFECTS DISCLOSED IN THE WORK BY TESTS AND OTHERWISE, SHALL BE MADE GOOD OR THE WORK REPLACED WITHOUT ADDITIONAL COST TO THE OWNER. NO CAULKING ON SCREWED JOINTS, CRACKS OR HOLES WILL BE ACCEPTABLE.
- THE DRAWINGS ARE DIAGRAMMATIC AND INDICATE THE GENERAL ARRANGEMENT AND LOCATIONS OF EQUIPMENT, PIPING, FIXTURES, ETC. THE CONTRACTOR SHALL MAKE ALL MODIFICATIONS IN THE LAYOUT WORK THAT MAY BE REQUIRED TO SUIT ACTUAL JOB CONDITIONS WITHOUT EXTRA COMPENSATION. THIS CONTRACTOR SHALL ASCERTAIN THAT ALL HIS EQUIPMENT, SUCH AS VALVES, ETC. IS MADE EASILY ACCESSIBLE FOR OPERATION AND MAINTENANCE, AS MAY BE NECESSARY TO BE REACHED FROM TIME TO TIME FOR OPERATION AND MAINTENANCE.
- PROVIDE NECESSARY STRUCTURAL MEMBERS, HANGERS AND SUPPORTS OF APPROVED DESIGN TO KEEP PIPING IN PROPER ALIGNMENT AND PREVENT TRANSMISSION OF INJURIOUS THRUSTS AND VIBRATIONS. IN ALL CASES, WHERE HANGERS, BRACKETS, ETC. ARE SUPPORTED FROM CONCRETE CONSTRUCTION, CARE SHALL BE TAKEN NOT TO WEAKEN CONCRETE OR PENETRATE WATERPROOFING. ALL HANGERS AND SUPPORTS SHALL BE CAPABLE OF SCREW ADJUSTMENT AFTER PIPING IS ERECTED. HANGERS SUPPORTING PIPING EXPANDING INTO LOOPS, BENDS AND OFFSETS SHALL BE SECURED TO THE BUILDING STRUCTURE IN SUCH A MANNER THAT HORIZONTAL ADJUSTMENT PERPENDICULAR TO THE RUN OF PIPING SUPPORTED MAY BE MADE TO ACCOMMODATE DISPLACEMENT DUE TO EXPANSION. ALL SUCH HANGERS SHALL BE FINALLY ADJUSTED BOTH IN THE VERTICAL AND HORIZONTAL DIRECTION.
- THE CONTRACTOR SHALL BEAR ALL RESPONSIBILITY FOR MATERIALS AND WORKMANSHIP AS DESCRIBED IN THESE NOTES, AND SHALL MAKE SURE THAT ALL HANGERS AND SUPPORTS ARE PROPERLY AND PERMANENTLY CONNECTED TO BRIDGE STRUCTURE.
- TESTS SHALL BE REPEATED AFTER ANY DEFECTS DISCLOSED THEREBY HAVE BEEN MADE GOOD OR THE WORK REPLACED IF IT IS DEEMED NECESSARY BY EITHER THE OWNER OR AUTHORITIES HAVING JURISDICTION.

STANDPIPE SYSTEM NOTES:


- DRY STANDPIPE SYSTEM SHALL BE PAID FOR UNDER ITEM 663.01010004.
- DRY STANDPIPE SYSTEM IS BASED ON THE REQUIREMENTS OF NATIONAL FIRE PROTECTION ASSOCIATION (NFPA) NFPA 14-2003 FOR A CLASS 1 SYSTEM.
- DRY STANDPIPE SYSTEM IS BASED ON THE REQUIREMENTS OF NFPA 502-2004 AND ASSOCIATED STANDARDS.
- EACH HOSE CONNECTION SHALL BE PROVIDED WITH A SIGN HAVING RAISED LETTERS, AT LEAST 1 INCH IN HEIGHT LETTERING THAT READS "MANUAL STANDPIPE FOR FIRE DEPARTMENT USE ONLY".
- THE COST OF THE SIGN AND ANY ATTACHMENTS FOR THE SIGN SHALL BE INCLUDED UNDER ITEM 663.01010004-DRY STANDPIPE. THE COLOR OF THE SIGN SHALL MATCH FEDERAL STANDARD #11350 WITH WHITE LETTERING. FOR SIGN TEXT DATA, SEE DWG. NO. FSP-15.


STANDPIPE SYSTEM NOTES: CONTINUED

- FIRE DEPARTMENT CONNECTIONS SHALL BE DESIGNATED WITH A SIGN HAVING RAISED LETTERS, AT LEAST 1 INCH IN HEIGHT, CAST ON A PLATE OR FITTING THAT READS "STANDPIPE". THE COST OF THE SIGN AND ANY ATTACHMENTS FOR THE SIGN SHALL BE INCLUDED UNDER ITEM 663.01010004 DRY STANDPIPE. FOR SIGN TEXT DATA, SEE DWG. NO. FSP-14.
- ALL PIPE HANGERS AND SUPPORTS SHALL BE AS SPECIFIED IN THE CONTRACT DOCUMENTS UNLESS OTHERWISE APPROVED BY THE ENGINEER. COST OF ALL PIPE HANGERS AND SUPPORTS SHALL BE INCLUDED UNDER ITEM 663.01010004-DRY STANDPIPE.
- ALL FABRICATED STRUCTURAL STEEL SUPPORTS FOR THE DRY STANDPIPE SHALL BE PAID UNDER ITEM 564.510020 STRUCTURAL STEEL AND BE GALVANIZED. COORDINATE LOCATION OF ALL EMBEDDED ANCHORS WITH PRECAST AND CAST-IN-PLACE CONCRETE WORK
- GALVANIZING SHALL CONFORM TO THE REQUIREMENTS OF THE NYSDOT SCM. AND BE PAID UNDER ITEM 564.2001008 GALVANIZING STRUCTURAL STEEL
- ALL STANDPIPE SYSTEM COATINGS SHALL CONFORM TO THE REQUIREMENTS OF SPECIFICATIONITEM 663.01010004 U.O.N.
- DRY STANDPIPE SYSTEM SHALL BE TESTED IN ACCORDANCE WITH NFPA 14 AND WITNESSED BY A REPRESENTATIVE OF THE STATE PRIOR TO FDNV TESTING. DRY STANDPIPE SYSTEM SHALL NOT BE ACCEPTED UNTIL SATISFACTORY COMPLETION OF THE SYSTEM TESTS. CONTRACTOR SHALL PROVIDE ENGINEER WITH 24 HOURS ADVANCE NOTICE OF TESTING.
- DISCHARGE POINTS/HOSE VALVE STATIONS ARE SPACED AT 150 FT MAXIMUM ON CENTER. COORDINATE RISER STATIONS WITH PRECAST AND CAST IN PLACE CONCRETE.
- COMBINATION AIR RELEASE/VACUUM VALVES TO BE PROVIDED AT THE HIGH POINTS OF EACH STANDPIPE.
- DESIGN PARAMETERS: 3000 GPM, WITH 1500 GPM FROM FDC AT BROOKLYN SIDE AND 1500 GPM FROM FDC AT QUEENS SIDE. INLET PRESSURE REQUIRED: 230 PSI. TIME TO FILL SYSTEM @ 3000 GPM = APPROX. 2.5 MINUTES. TIME TO FILL SYSTEM @ 1000 GPM = APPROX. 8.0 MINUTES.
- HOSE VALVE STATION LOCATION GIVEN ALONG THE WB/TGL IS NOMINAL AND MAY BE ADJUSTED +/- 2 FEET TO ACCOMMODATE GIRDER INSERTS, LIGHTING, ETC. PROVIDED THE REQUIREMENTS OF NOTE 2 ARE MET.
- ALL PIPE, FITTINGS, VALVES AND DEVICES SHALL BE UL FIRE PROTECTION LISTED OR FACTORY MUTUAL (FM) APPROVED FOR FIRE PROTECTION SERVICE WHEN SUPPLIED AT A MINIMUM OF 300 PSI WORKING PRESSURE UNLESS OTHERWISE INDICATED.
- ALL STANDPIPE PIPING TO BE ASTM A53-B ERW SCHEDULE 40 HOT DIPPED GALVANIZED STEEL WITH CUT GROOVED ENDS UNLESS OTHERWISE NOTED. STANDPIPE PIPE MAY USE ROLLED GROOVED FOLLOWING MANUFACTURERS PROCEDURES PROVIDED PIPE LENGTHS ARE ADJUSTED (SHORTENED) TO PROVIDE THE SAME COUPLING EXPANSION CAPACITY OF CONTRACT DESIGN AS SHOWN ON THE PLANS.
- GROOVED-END FITTINGS: ONE OR MORE PIECES OF DUCTILE IRON CONFORMING TO ASTM A536, GRADE 65-45-12 OR MALLEABLE IRON CONFORMING TO ASTM A47 GRADE 32510 WITH A SYNTHETIC RUBBER GASKET AND PLATED NUTS AND BOLTS. RIGID COUPLINGS SHALL BE VICTAULIC STYLE 107, OR EQUAL BY ANVIL INTERNATIONAL OR GRINNELL. FLEXIBLE COUPLINGS SHALL BE VICTAULIC STYLE 177, OR EQUAL BY ANVIL INTERNATIONAL OR GRINNELL. UTILIZE FLEXIBLE COUPLINGS FOR ALL INTERMEDIATE JOINTS EXCEPT AS SHOWN ON THE PLANS.
- ALL COUPLINGS AND FITTINGS SHALL BE HOT-DIP GALVANIZED TO ASTM A153. COUPLINGS AND FITTINGS ON THE PAINTED PORTIONS OF THE STANDPIPE SYSTEM SHALL BE FINISH PAINTED WITH THE SPECIFIED STANDPIPE COLOR AND PAINT SYSTEM USING A COMPATIBLE INTERMEDIATE TIE COAT IF NECESSARY.
- FLANGE ADAPTERS SHALL BE FOR USE WITH GROOVED-END PIPE AND FITTINGS, FOR MATING TO ANSI CLASS 150 FLANGES.
- ADAPTERS TO BE VICTAULIC STYLE 741 OR EQUAL BY ANVIL INTERNATIONAL OR GRINNELL. GASKETS FOR GROOVED END COUPLINGS SHALL BE UL LISTED TYPE AND MATERIAL RECOMMENDED BY THE MANUFACTURER FOR THE EXPOSED DRY- STANDPIPE SERVICE PIPE SYSTEMS. GASKETS SHALL BE MOLDED OF SYNTHETIC RUBBER ESPECIALLY COMPOUNDED TO CONFORM TO DUCTILE PIPE SURFACES IN A CENTRAL CAVITY, PRESSURE- RESPONSIVE CONFIGURATION, CONFORMING TO THE PIPE OUTSIDE DIAMETER AND COUPLING HOUSING, OF ELASTOMERS HAVING PROPERTIES AS DESIGNATED IN ASTM D2000. REFER TO MFGS. LATEST PUBLISHED SELECTION GUIDE FOR PROPER GASKET SELECTION FOR THE INTENDED SERVICE. GASKETS SUPPLIED FOR THIS SERVICE SHALL BE RATED FOR SERVICE FROM -30°F TO +250°F.
- PIPE HANGERS AND SUPPORTS SHALL BE AS FOLLOWS AND AS SHOWN ON THE PLANS, OR APPROVED EQUAL:
A) DOUBLE-ROLLER PIPE GUIDE: COOPER B-LINE FIG. B3122A
B) OFFSET PIPE CLAMP: ANVIL FIG. 103, COOPER B-LINE FIG.B3148, C-P FIG. 179
C) EXTENDED-OFFSET CLAMP: ANVIL FIG. 100, COOPER B LINE FIG. B3149, C-P FIG.267
D) ADJUSTABLE PIPE SUPPORT W/ U-BOLT: ANVIL FIG.191, COOPER B-LINE FIG. B3098
E) PIPE SADDLE W/ U-BOLT &PIPE EXTENSION: ANVIL FIG. 265, COOPER B-LINE FIG. B3090
F) ADJUSTABLE PIPE SADDLE: ANVIL FIG.192, COOPER B-LINE FIG. B3096, C-PFIG.137
G) PIPE ANCHOR: COOPER B-LINE FIG. B3147B, C-P FIG. 127
H) HOLD-DOWN ANCHOR CLAMP: COOPER B-LINE FIG. B3256
I) VERTICAL RISER CLAMPS: 2-BOLT OR 4-BOLT OFFSET CLAMP MANUFACTURED BY CARPENTER-PATERSON

STANDPIPE SYSTEM NOTES: CONTINUED

- THE CONTRACTOR MAY PROPOSE ADDITIONAL OR DIFFERENT PIPE SUPPORTS SUBJECT TO REVIEW WHEN PROVIDED WITH INDEPENDENT ENGINEERING FOR EVALUATION AND APPROVAL BY THE ENGINEER.
- ALL VERTICAL OR HORIZONTAL SHEAR ANCHORS FOR THREADED ROD OR BOLTS SHALL BE AS FOLLOWS OR APPROVED EQUAL IN CONFORMANCE WITH NYSDOT APPROVED MATERIALS. TWO-COMPONENT VINYLESTER ANCHORS BASED ON CAPSULE-WITHIN-A-CAPSULE SYSTEM SIMPSON TYPE VQA OR HILTI HVA OR EPOXY ANCHORS HILTI HIT-RE500 OR SIMILAR SYSTEMS THAT SHALL NOT BE USED FOR OVERHEAD APPLICATIONS.
- PROVIDE EXTERNALLY PRESSURIZED GUIDED INLINE LINEAR EXPANSION JOINTS AT BRIDGE EXPANSION JOINTS AS SHOWN ON THE PLANS. PROVIDE 300* CLASS SINGLE AND DUAL ACTION FLANGED EXPANSION TO SATISFY ANTICIPATED TOTAL AXIAL DESIGN MOVEMENTS. JOINTS ARE CONSTRUCTED OF HIGH STRENGTH STEEL EXTERNAL COVER HOUSING MULTIPLE PLY TYPE 304 STAINLESS STEEL BELLOWS BETWEEN MULTIPLE ANTI SQUIRM GUIDE AND WEAR BUSHINGS AND END WEAR RINGS. JOINTS SHALL BE FM APPROVED AND PRESSURE TESTED TO 450 PSI AT 250 DEGREE F. EXTERNAL COATINGS SHALL BE FUSION-BONDED EPOXY. EXTERNAL PAINT SHALL MATCH THE COLOR OF THE BRIDGE AND AS APPROVED BY THE ENGINEER. FLEXPRESS FPS-Fx300-8 SINGLE AND FPD-Fx300 DUAL CLASS JOINTS BY FLEX-HOSE INDUSTRIES OR SIMILAR MODELS FROM MASON INDUSTRIES, FLEXI-CRAFT OR APPROVED EQUALS.
- OS&Y GATE VALVES SHALL BE PROVIDED AS SHOWN ON THE PLANS. VALVES SHALL MEET UL 262 AND BE RATED FOR 300 PSIG MINIMUM. BODY MATERIAL TO BE CAST OR DUCTILE IRON OR CAST STEEL; EPOXY COATED. END CONNECTIONS SHALL BE FLANGED OR GROOVED TO MATCH MATING PIPING. VALVES SHALL BE RISING-STEM TYPE. VALVES 6" AND LARGER SHALL HAVE MINIMUM 3/4" VALVED BYPASS.
- DRAINAGE VALVES SHALL BE BALL VALVES WITH BRASS BODY. VALVES SHALL BE RATED FOR 300 PSI AND FM APPROVED OR UL LISTED.
- AUTOMATIC DRIP VALVES SHALL BE PROVIDED AT THE LOWER FDC CONNECTIONS AND ANY OTHER INTERMEDIATE SYSTEM LOW POINTS. UL LISTED OR FM APPROVED AT 300 PSI. VALVE SHALL HAVE 3/4" NPT INLET AND BE CONSTRUCTED OF BRASS OR STAINLESS STEEL. VALVES SHALL BE MOUNTED HORIZONTALLY AND BE DESIGNED FOR OPERATION IN THE ORIENTATION IN WHICH THEY ARE INSTALLED.
- COMBINATION AIR-RELEASE/VACUUM VALVES PROVIDED AT THE HIGH POINT OF EACH STANDPIPE TO EXHAUST AIR DURING FILLING AND PIPE VACUUM PROTECTION DURING DRAINING IN SIZE INDICATED ON THE PLANS, WITH FLANGED OR THREADED ENDS TO MATE ADJACENT PIPING. SINGLE BODY VALVE AND COVER ARE HIGH-STRENGTH, CAST IRON ASTM A126, CLASS B, CLASS 125 AND 250. FLOAT AND MOVING PARTS TYPE 316 STAINLESS STEEL ASTM A240. SEAT WASHERS AND GASKETS THAT ENSURES WATER TIGHTNESS WITH MINIMUM MAINTENANCE. PROVIDE OUTLET HOOD WITH SCREEN. MINIMUM WORKING WATER PRESSURE OF 300 PSI, MINIMUM ORIFICE SIZE OF 5/64"OR AS DETERMINED BY CALCULATION USING THE MANUFACTURER'S SPECIFIED PROCEDURES, 3000 GALLONS PER MINUTE MAX FLOW RATE. TO BE COORDINATED WITH FNDY RESPONDING EQUIPMENT CAPACITIES.
- AIR RELEASE VALVES SHALL BE PROVIDED AT EACH HOSE VALVE STATION AS SHOWN ON THE PLANS EXHAUST AIR DURING FILLING AND SYSTEM OPERATION. VALVES HAVE FLANGED OR THREADED ENDS TO MATE ADJACENT PIPING. SINGLE BODY VALVE AND COVERS ARE HIGH-STRENGTH, CAST IRON DESIGNED CLASS 300 PSI, MINIMUM ORIFICE SIZE OF 5/64"AS DETERMINED BY CALCULATION FOR MAXIMUM FLOW RATE OF 3000 GALLONS PER MINUTE. COORDINATE WITH FDNV RESPONDING EQUIPMENT.
- FIRE DEPARTMENT CONNECTIONS (FDCS) SHALL BE ARRANGED AS INDICATED ON THE DRAWINGS SHALL BE TWO-WAY SINGLE-OUTLET WITH REAR OUTLET AND FOUR-WAY SQUARE INLET SINGLE-OUTLET WITH REAR OUTLET. INLETS SHALL BE 3" FEMALE SWIVEL WITH FDNV THREAD. OUTLETS SHALL BE 6"THREADED. INLETS SHALL HAVE INDIVIDUAL CLAPPERS, CAST ROUGH BRASS BODY WITH ALUMINUM PLUG AND CHAINS. FIRE DEPARTMENT CONNECTIONS AS MANUFACTURED BY CROKER, ELKHART BRASS, GUARDIAN OR APPROVED EQUAL. FDC BODY SHALL HAVE "STANDPIPE" CAST IN MINIMUM 1"HIGH LETTERING, MINIMUM 1/8"DEEP.
- CHECK VALVES SHALL BE PROVIDED AT EACH FDC RISER. CHECK VALVES SHALL BE UL LISTED AND FM APPROVED SINGLE DISK SPRING ASSISTED INTERNAL DISC VALVE RATED AT 300 PSI WORKING PRESSURE. SPRING AND SHAFT SHALL BE STAINLESS STEEL. VALVE SHALL BE SUITABLE FOR INSTALLATION IN VERTICAL ORIENTATION WITH UPWARD FLOW. FLOW INDICATORS SHALL BE CAST INTEGRAL TO THE VALVE BODY ON BOTH SIDES. PROVIDE 2"NPT UPSTREAM DRAIN. BODY TO BE DUCTILE IRON.
- HOSE VALVES SHALL BE CLASS 1 OS&Y ANGLE GLOBE VALVES AS SHOWN ON THE PLANS. VALVES SHALL BE RATED AT 300 PSI, FM APPROVED AND UL LISTED. HOSE THREADS SHALL BE 2-1/2"MALE FDNV STANDARD THREADS. VALVES SHALL BE CAST ROUGH BRASS. INCLUDE CAST BRASS CAP AND CHAIN. VALVES SHALL BE AS MANUFACTURED BY CROKER, ELKHART BRASS, GUARDIAN, OR APPROVED EQUAL.

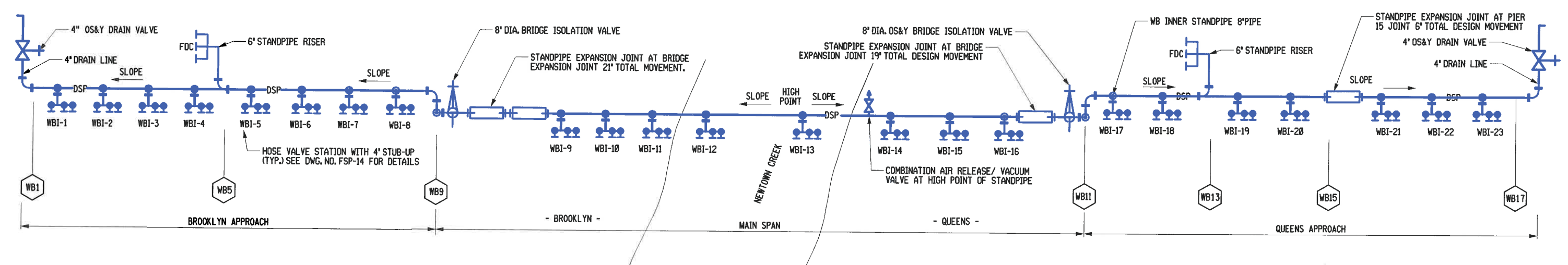
AFFIX SEAL: HARDESTY & HANOVER LLC ON: 2/24/2017	ALTERED BY: ON:
	

AS-BUILT REVISIONS DESCRIPTION OF ALTERATIONS:	REPLACEMENT OF THE KOSCIUSZKO BRIDGE OVER NEWTOWN CREEK	PIN X729.77	BRIDGES 1079732	CULVERTS	ALL DIMENSIONS IN FT UNLESS OTHERWISE NOTED	CONTRACT NUMBER D263452
	PHASE 2					
	I-278, BROOKLYN - QUEENS EXPRESSWAY					
	COUNTY: KINGS AND QUEENS	REGION: 11				
IT IS A VIOLATION OF LAW FOR ANY PERSON, UNLESS THEY ARE ACTING UNDER THE DIRECTION OF A LICENSED PROFESSIONAL ENGINEER, ARCHITECT, LANDSCAPE ARCHITECT, OR LAND SURVEYOR, TO ALTER AN ITEM IN ANY WAY. IF AN ITEM BEARING THE STAMP OF A LICENSED PROFESSIONAL IS ALTERED, THE ALTERING ENGINEER, ARCHITECT, LANDSCAPE ARCHITECT, OR LAND SURVEYOR SHALL STAMP THE DOCUMENT AND INCLUDE THE NOTATION "ALTERED BY" FOLLOWED BY THEIR SIGNATURE, THE DATE OF SUCH ALTERATION, AND A SPECIFIC DESCRIPTION OF THE ALTERATION.						
 Department of Transportation						



FILE NAME = x73124_FSP_03_riser diagram.dgn
DATE/TIME = 17-FEB-2017 16:21
USER = mdeprunzio

DESIGN SUPERVISOR D. WAN
JOB MANAGER M. MOHRMANN
DESIGN D. DELLE DONNE
CHECK D. DELLE DONNE
CHECK R. ROMAN
DRAFTING R. GRILLO
CHECK R. GRILLO
PROJECT MANAGER M. MCANT
D. WAN

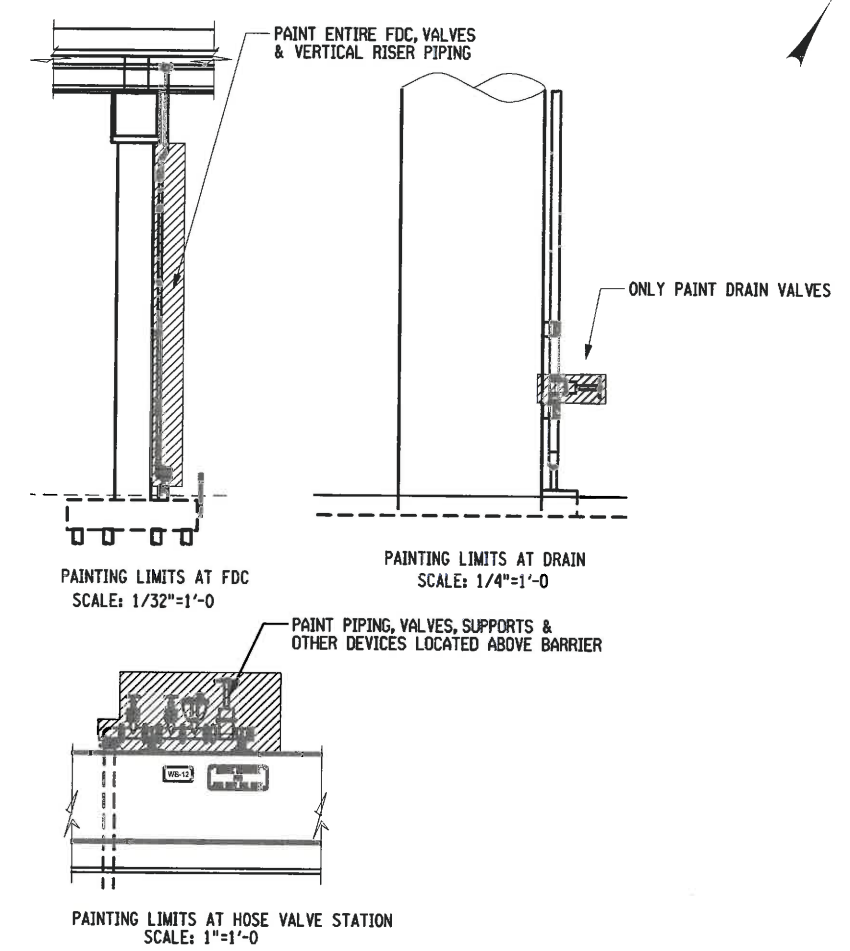


FIRE STANDPIPE RISER DIAGRAM
NOT TO SCALE

FIRE STANDPIPE DESIGN CRITERIA	
NUMBER OF STANDPIPES	1 (CLASS 1, MANUAL DRY) - WB INNER
DESIGN FLOW RATE	250 GPM PER 2½" HOSE CONNECTION OR 2000 GPM MAXIMUM PER 4" PUMPER CONNECTION
TOTAL DESIGN FLOW REQUIREMENTS	3000 GPM TOTAL INLETS (FED CONCURRENTLY): - 1500 GPM @ 300 PSI AT BROOKLYN FDC - 1500 GPM @ 300 PSI AT QUEENS FDC OUTLETS FOR PUMPER CONNECTION (CONCURRENTLY): - 2000 GPM TO MOST REMOTE 4" CONNECTION - 1000 GPM TO SECOND MOST REMOTE 4" CONNECTION OR OUTLETS FOR HOSES: - 250 GPM TO EACH OF SIX MOST REMOTE HOSE VALVES

NOTES:

- THE RISER DIAGRAM IS SCHEMATIC. ACTUAL PIPE ROUTING MAY CREATE INTERMEDIATE LOW POINTS. AUTOMATIC DRAIN VALVE SHALL BE INSTALLED AT EACH AND EVERY LOW POINT LOCATION.
- STANDPIPES FOR NEW WB STRUCTURE SHOWN.



FIRE STANDPIPE PAINTING LIMITS

ABBREVIATIONS


CON	CONNECTION
CV	CHECK VALVE
DIA	DIAMETER
DN	DOWN
DSP	DRY STANDPIPE
DWG	DRAWING
EA	EACH
EB	EASTBOUND
ELEV	ELEVATION
FDC	FIRE DEPARTMENT CONNECTION
FP	FIRE PROTECTION
FSP	FIRE STANDPIPE SYSTEM
FT	FOOT
GPM	GALLONS PER MINUTE
GV	GATE VALVE
MIN	MINIMUM
NPT	NATIONAL PIPE THREAD
NC	NORMALLY CLOSED
NO	NORMALLY OPEN
NIC	NOT IN CONTRACT
NTS	NOT TO SCALE
OS&Y	OUTSIDE SCREW AND YOKE
PSI	POUNDS PER SQUARE INCH
SCH	SCHEDULE
SST	STAINLESS STEEL
STA	STATION
TGL	THEORETICAL GRADE LINE
TPI	THREADS PER INCH
TYP	TYPICAL
W/	WITH
WB	WESTBOUND

LEGEND/SYMBOLS:

DSP	DRY STANDPIPE
CL	CENTER LINE
ETU	ELBOW TURNED UP
ETD	ELBOW TURNED DOWN
EL90	ELBOW - 90°
EL45	ELBOW - 45°
TOU	TEE OUTLET UP
EJ	EXPANSION JOINT
RF	REDUCING FLANGE
CR	CONCENTRIC REDUCER
PB	PIPE BREAK
PC/P	PIPE CAP/PLUG
ARV	AIR RELEASE VALVE
DCDV	DOUBLE CHECK DETECTOR VALVE
OS&YGVTS	OS&Y GATE VALVE WITH TAMPER SWITCH
OS&YGVTV	OS&Y GATE VALVE WITH TAMPER SWITCH VALVE ON VERTICAL
OS&YDV	OS&Y DRAIN VALVE
CV	CHECK VALVE
HVS	HOSE VALVE STATION
FDC	FIRE DEPT. CONNECTION
SN	SECTION NO.
DN	DRAWING NO.
SVN	SECTION NO.
SVN	DRAWING NO.

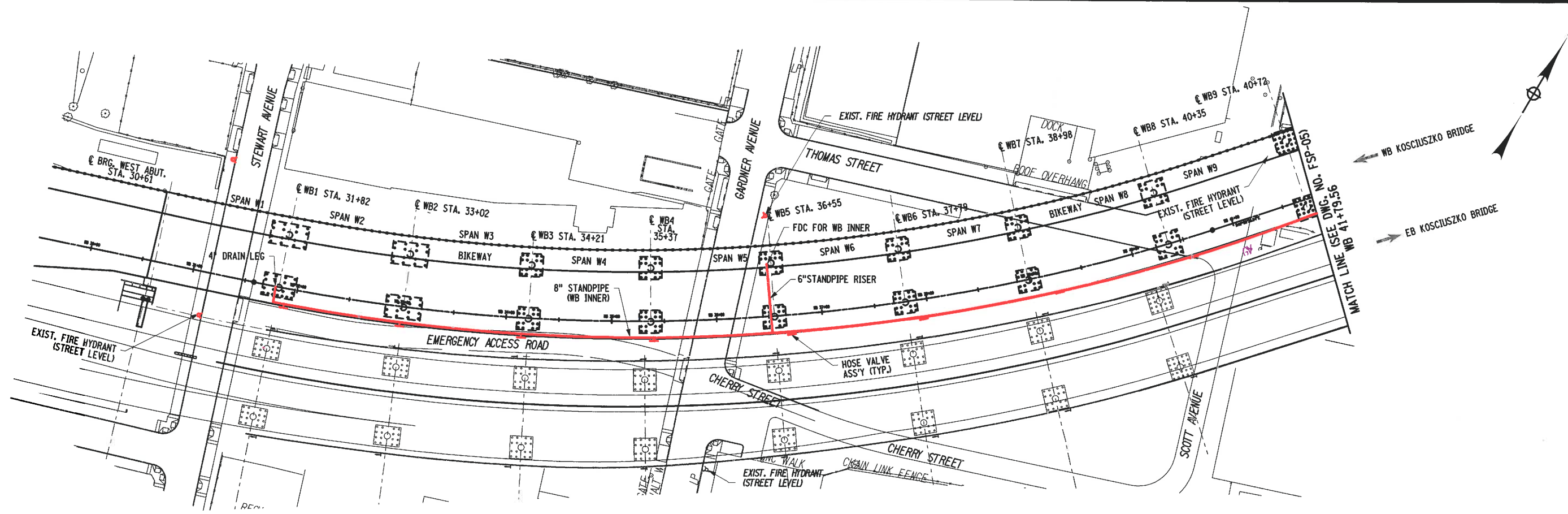
AFFIX SEAL: HARDESTY & HANOVER LLC
ON: 2/24/2017

ALTERED BY:
ON:

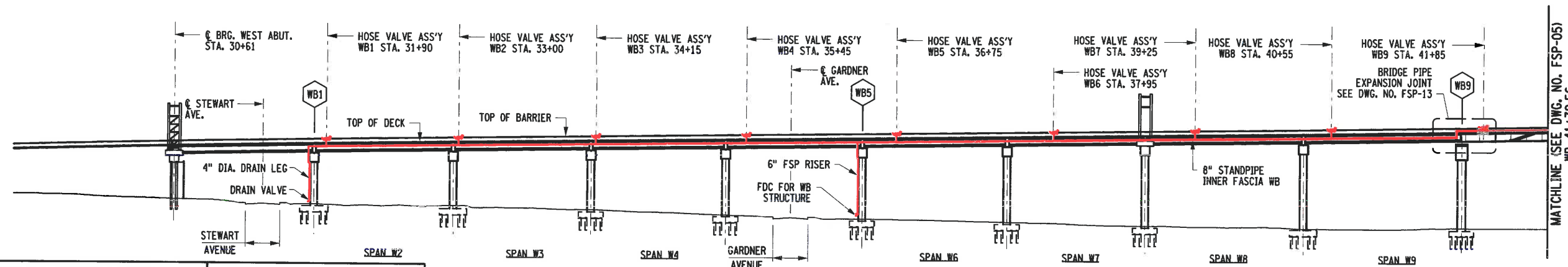
AS-BUILT REVISIONS DESCRIPTION OF ALTERATIONS:	REPLACEMENT OF THE KOSCIUSZKO BRIDGE OVER NEWTOWN CREEK	PIN X729.77	BRIDGES 1079732	CULVERTS	ALL DIMENSIONS IN FT UNLESS OTHERWISE NOTED	FIRE STANDPIPE SCHEMATIC RISER DIAGRAM	CONTRACT NUMBER D263452
	PHASE 2						DRAWING NO. FSP-03
	I-278, BROOKLYN - QUEENS EXPRESSWAY						SHEET NO. 480
	COUNTY: KINGS AND QUEENS	REGION: 11					
IT IS A VIOLATION OF LAW FOR ANY PERSON, UNLESS THEY ARE ACTING UNDER THE DIRECTION OF A LICENSED PROFESSIONAL ENGINEER, ARCHITECT, LANDSCAPE ARCHITECT, OR LAND SURVEYOR, TO ALTER AN ITEM IN ANY WAY. IF AN ITEM BEARING THE STAMP OF A LICENSED PROFESSIONAL IS ALTERED, THE ALTERING ENGINEER, ARCHITECT, LANDSCAPE ARCHITECT, OR LAND SURVEYOR SHALL STAMP THE DOCUMENT AND INCLUDE THE NOTATION "ALTERED BY" FOLLOWED BY THEIR SIGNATURE, THE DATE OF SUCH ALTERATION, AND A SPECIFIC DESCRIPTION OF THE ALTERATION.							
<div> NEW YORK STATE OF OPPORTUNITY.</div> <div>Department of Transportation</div>							

FILE NAME = X73124_FSP-04 GR&E.dgn
DATE/TIME = 17-FEB-2017 16:21
USER = mdeputato

DESIGN SUPERVISOR D. WAN
JOB MANAGER M. MOHRMANN
DESIGN D. DELLE DONNE
CHECK R. ROMAN
DRAFTING R. GRILLO
CHECK E. RECIO
PROJECT MANAGER D. WAN



PROPOSED STANDPIPE PLAN
SCALE: 1" = 100'-0"





PROPOSED STANDPIPE ELEVATION
SCALE: 1" = 100'-0"

25' 0 50' 100'
1" = 100'-0"

AFFIX SEAL: HARDESTY & HANOVER LLC
ON: 2/24/2017

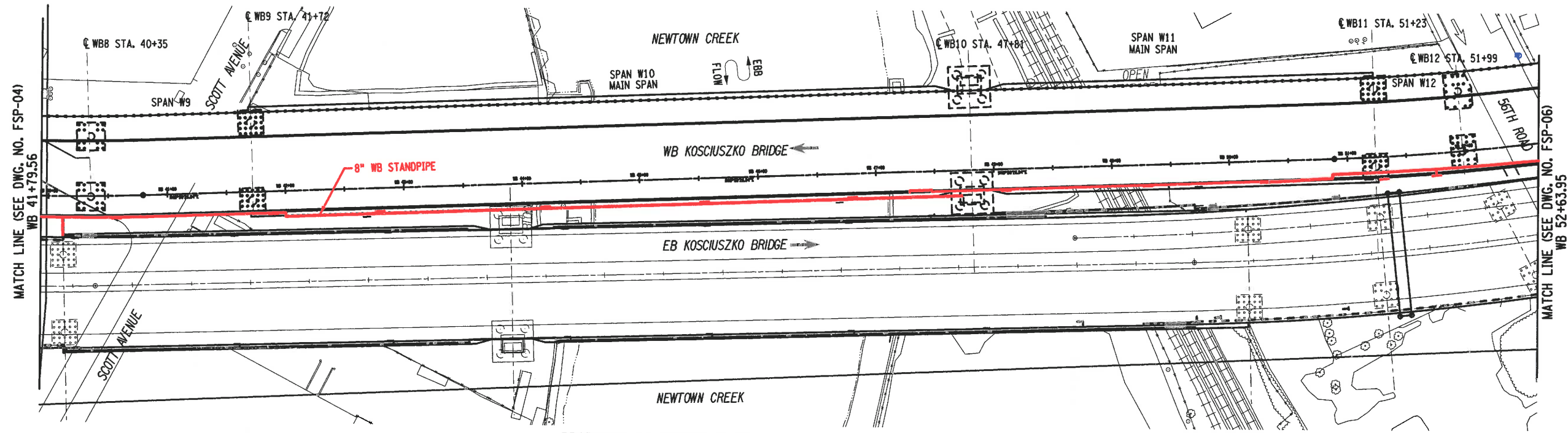
ALTERED BY:
ON:



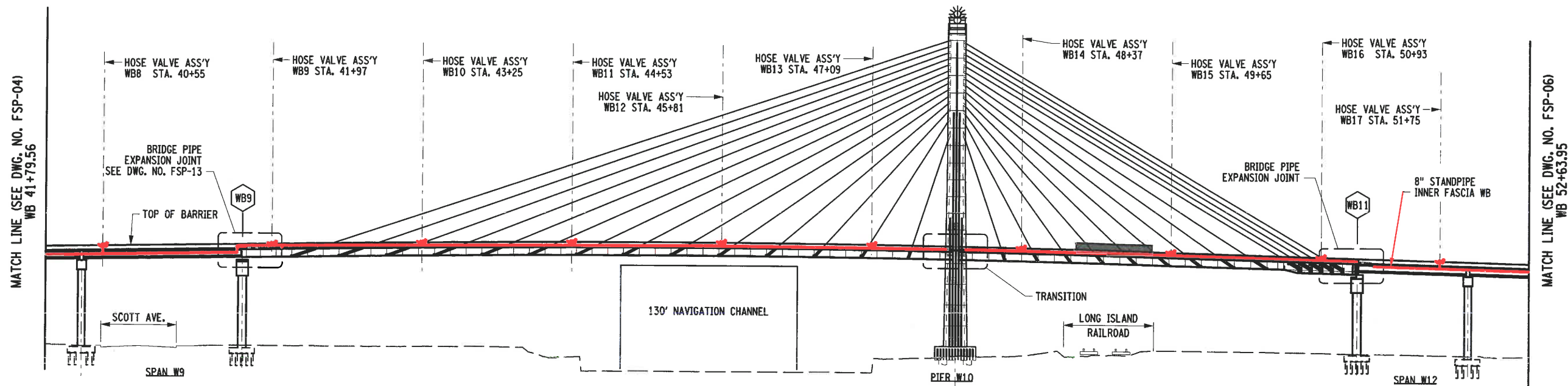
AS-BUILT REVISIONS DESCRIPTION OF ALTERATIONS:	REPLACEMENT OF THE KOSCIUSZKO BRIDGE OVER NEWTOWN CREEK	PIN X729.77	BRIDGES 1079732	CULVERTS	ALL DIMENSIONS IN FT UNLESS OTHERWISE NOTED	CONTRACT NUMBER D263452	
	PHASE 2				FIRE STANDPIPE GENERAL PLAN & ELEVATION (1 OF 3)	DRAWING NO. FSP-04 SHEET NO. 481	
	I-278, BROOKLYN - QUEENS EXPRESSWAY						
	COUNTY: KINGS AND QUEENS						REGION: 11
IT IS A VIOLATION OF LAW FOR ANY PERSON, UNLESS THEY ARE ACTING UNDER THE DIRECTION OF A LICENSED PROFESSIONAL ENGINEER, ARCHITECT, LANDSCAPE ARCHITECT, OR LAND SURVEYOR, TO ALTER AN ITEM IN ANY WAY. IF AN ITEM BEARING THE STAMP OF A LICENSED PROFESSIONAL IS ALTERED, THE ALTERING ENGINEER, ARCHITECT, LANDSCAPE ARCHITECT, OR LAND SURVEYOR SHALL STAMP THE DOCUMENT AND INCLUDE THE NOTATION "ALTERED BY" FOLLOWED BY THEIR SIGNATURE, THE DATE OF SUCH ALTERATION, AND A SPECIFIC DESCRIPTION OF THE ALTERATION.							
						 NEW YORK STATE OF OPPORTUNITY.	Department of Transportation

FILE NAME = x73124_FSP_05 GP&E.dgn
DATE/TIME = 17-FEB-2017 16:21
USER = mdeprinto

JOB MANAGER D. WAN
DESIGN SUPERVISOR D. WAN
DESIGN M. MOHRMANN
DESIGN D. DELLE DONNE
CHECK D. DELLE DONNE
CHECK R. ROMAN
DRAFTING R. CRILLO
CHECK E. RECIO
PROJECT MANAGER D. WAN



PROPOSED STANDPIPE PLAN
SCALE: 1" = 100'-0"



PROPOSED STANDPIPE ELEVATION
SCALE: 1" = 100'-0"

25' 0 50' 100'
1" = 100'-0"



AFFIX SEAL: HARDESTY & HANOVER LLC
ON: 2/24/2017

ALTERED BY:
ON:

AS-BUILT REVISIONS
DESCRIPTION OF ALTERATIONS:

REPLACEMENT OF THE KOSCIUSZKO BRIDGE OVER NEWTOWN CREEK
PHASE 2
I-278, BROOKLYN - QUEENS EXPRESSWAY
COUNTY: KINGS AND QUEENS REGION: 11

PIN X729.77

BRIDGES
1079732

CULVERTS

ALL DIMENSIONS IN FT UNLESS OTHERWISE NOTED

CONTRACT NUMBER
D263452

FIRE STANDPIPE
GENERAL PLAN & ELEVATION
(2 OF 3)

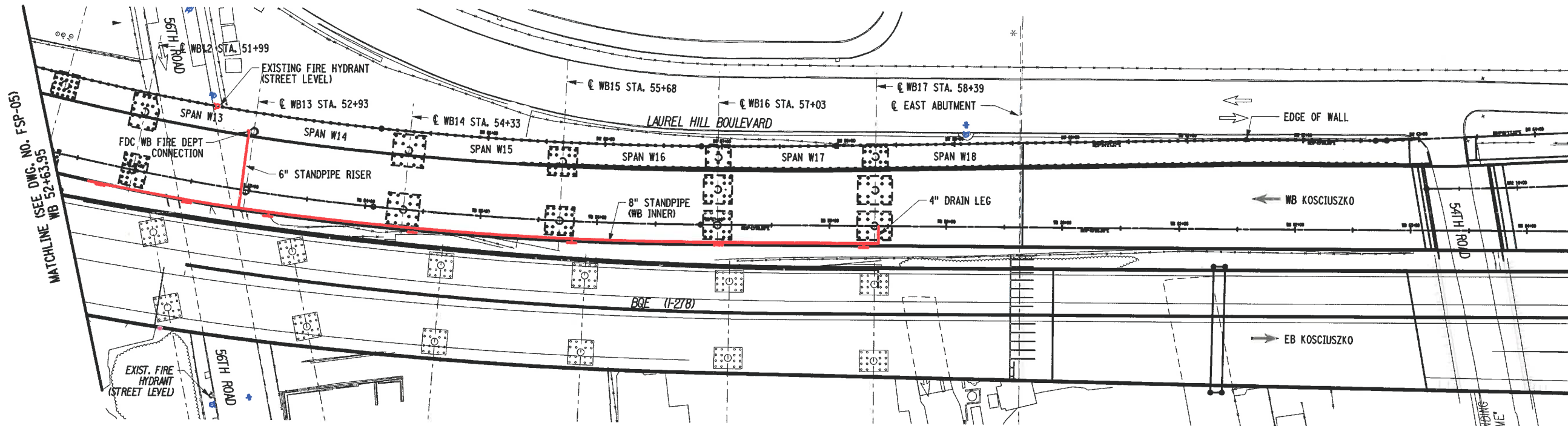
DRAWING NO. FSP-05
SHEET NO. 482

IT IS A VIOLATION OF LAW FOR ANY PERSON, UNLESS THEY ARE ACTING UNDER THE DIRECTION OF A LICENSED PROFESSIONAL ENGINEER, ARCHITECT, LANDSCAPE ARCHITECT, OR LAND SURVEYOR, TO ALTER AN ITEM IN ANY WAY. IF AN ITEM BEARING THE STAMP OF A LICENSED PROFESSIONAL IS ALTERED, THE ALTERING ENGINEER, ARCHITECT, LANDSCAPE ARCHITECT, OR LAND SURVEYOR SHALL STAMP THE DOCUMENT AND INCLUDE THE NOTATION "ALTERED BY" FOLLOWED BY THEIR SIGNATURE, THE DATE OF SUCH ALTERATION, AND A SPECIFIC DESCRIPTION OF THE ALTERATION.

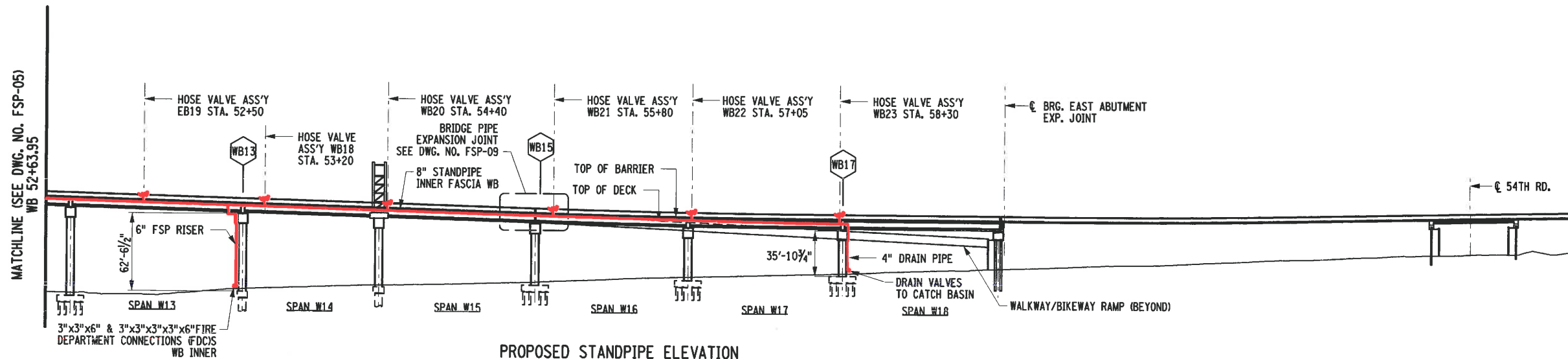
NEW YORK
STATE OF
OPPORTUNITY
Department of
Transportation

FILE NAME = x73124.FSP-06 GP&E.dgn
DATE/TIME = 17-FEB-2017 16:21
USER = mdepinto

JOB MANAGER M. MOHRMANN DESIGN D. DELLE DONNE CHECK R. ROMAN DRAFTING R. GRILLO CHECK E. RECIO PROJECT MANAGER D. WAN



PROPOSED STANDPIPE PLAN
SCALE: 1" = 100'-0"



PROPOSED STANDPIPE ELEVATION
SCALE: 1" = 100'-0"

25' 0 50' 100'
1" = 100'-0"

AFFIX SEAL: HARDESTY & HANOVER LLC
ON: 2/24/2017

ALTERED BY:
ON:



AS-BUILT REVISIONS
DESCRIPTION OF ALTERATIONS:

REPLACEMENT OF THE KOSCIUSZKO BRIDGE OVER NEWTOWN CREEK

PIN X729.77

BRIDGES
1079732

CULVERTS

ALL DIMENSIONS IN FT UNLESS OTHERWISE NOTED

CONTRACT NUMBER
D263452

FIRE STANDPIPE
GENERAL PLAN & ELEVATION
(3 OF 3)

DRAWING NO. FSP-06
SHEET NO. 483

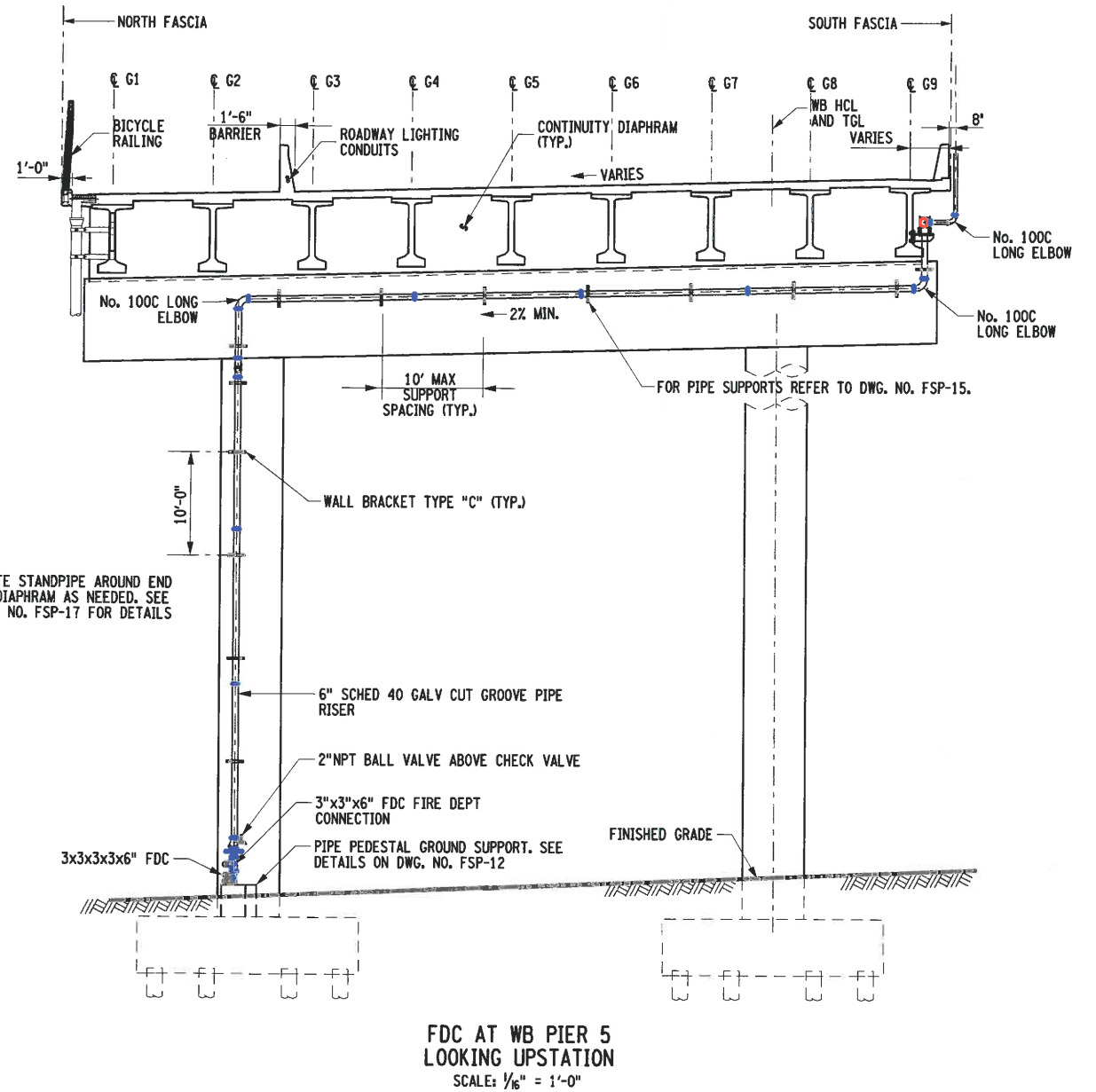
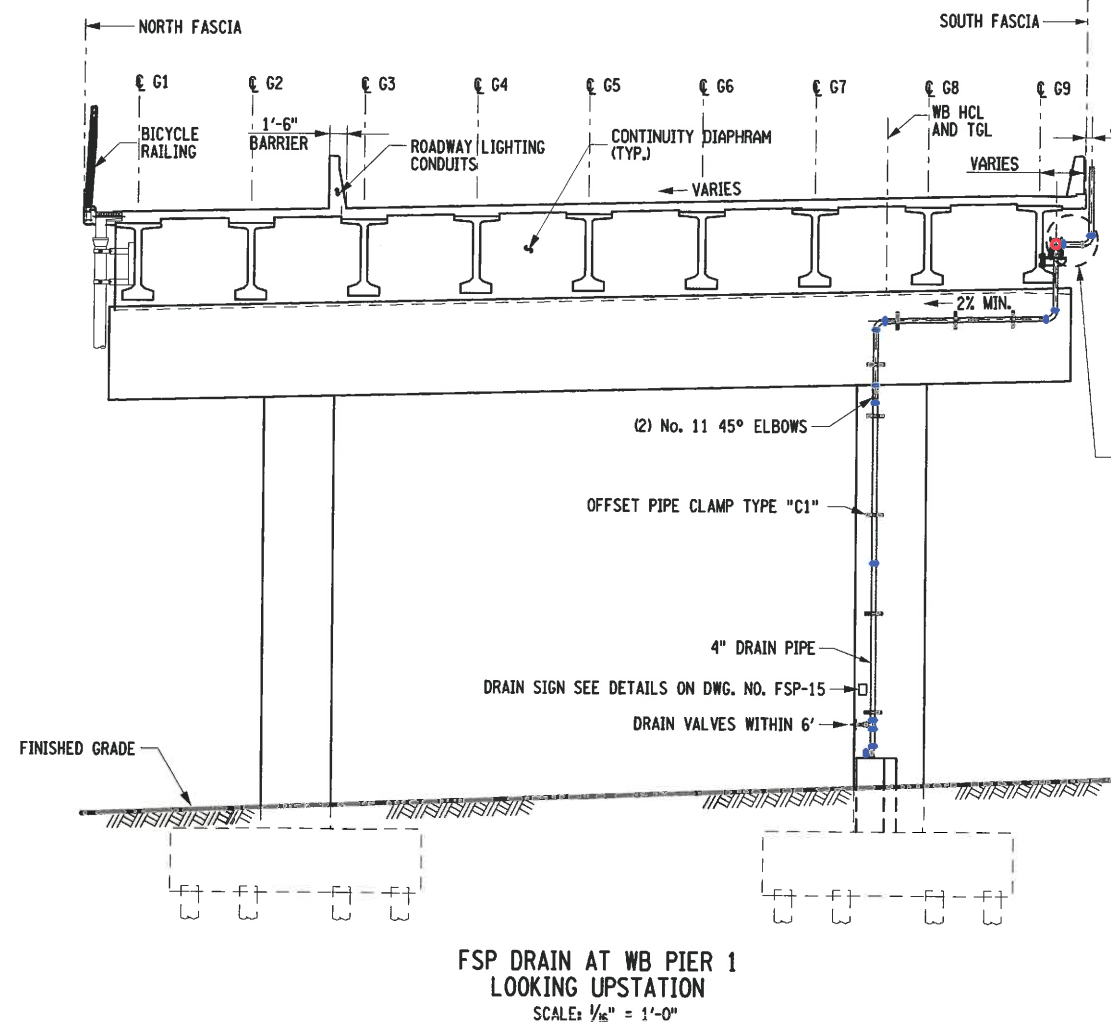
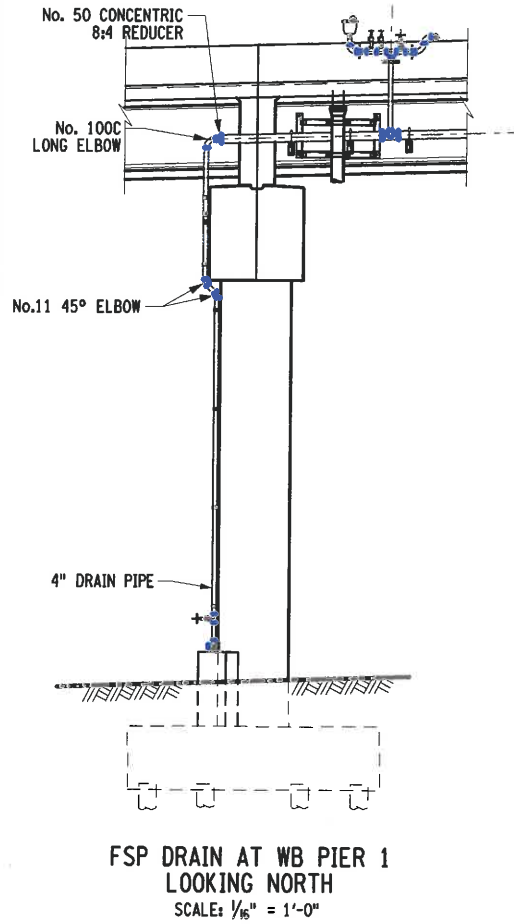
IT IS A VIOLATION OF LAW FOR ANY PERSON, UNLESS THEY ARE ACTING UNDER THE DIRECTION OF A LICENSED PROFESSIONAL ENGINEER, ARCHITECT, LANDSCAPE ARCHITECT, OR LAND SURVEYOR, TO ALTER AN ITEM IN ANY WAY. IF AN ITEM BEARING THE STAMP OF A LICENSED PROFESSIONAL IS ALTERED, THE ALTERING ENGINEER, ARCHITECT, LANDSCAPE ARCHITECT, OR LAND SURVEYOR SHALL STAMP THE DOCUMENT AND INCLUDE THE NOTATION "ALTERED BY" FOLLOWED BY THEIR SIGNATURE, THE DATE OF SUCH ALTERATION, AND A SPECIFIC DESCRIPTION OF THE ALTERATION.



Department of
Transportation

FILE NAME = Y73124_FSP-07 Pier SectionWB1 & WB5.dgn
DATE/TIME = 17-FEB-2017 16:21
USER = mdeputato

DESIGN SUPERVISOR D. WAN JOB MANAGER M. MOHRMANN DESIGN D. DELLE DONNE CHECK D. DELLE DONNE DRAFTING R. ROMAN CHECK R. GRILLO E. RECIO PROJECT MANAGER D. WAN



AFFIX SEAL: HARDESTY & HANOVER LLC
ON: 2/24/2017

ALTERED BY:
ON:



AS-BUILT REVISIONS
DESCRIPTION OF ALTERATIONS:

REPLACEMENT OF THE KOSCIUSKO BRIDGE OVER NEWTOWN CREEK
PHASE 2
I-278, BROOKLYN - QUEENS EXPRESSWAY
COUNTY: KINGS AND QUEENS REGION: 11

PIN X729.77

BRIDGES
1079732

CULVERTS

ALL DIMENSIONS IN FT UNLESS OTHERWISE NOTED

FIRE STANDPIPE
BROOKLYN APPROACH PIERS
WB1 & WB5

CONTRACT NUMBER
D263452

DRAWING NO. FSP-07
SHEET NO. 484

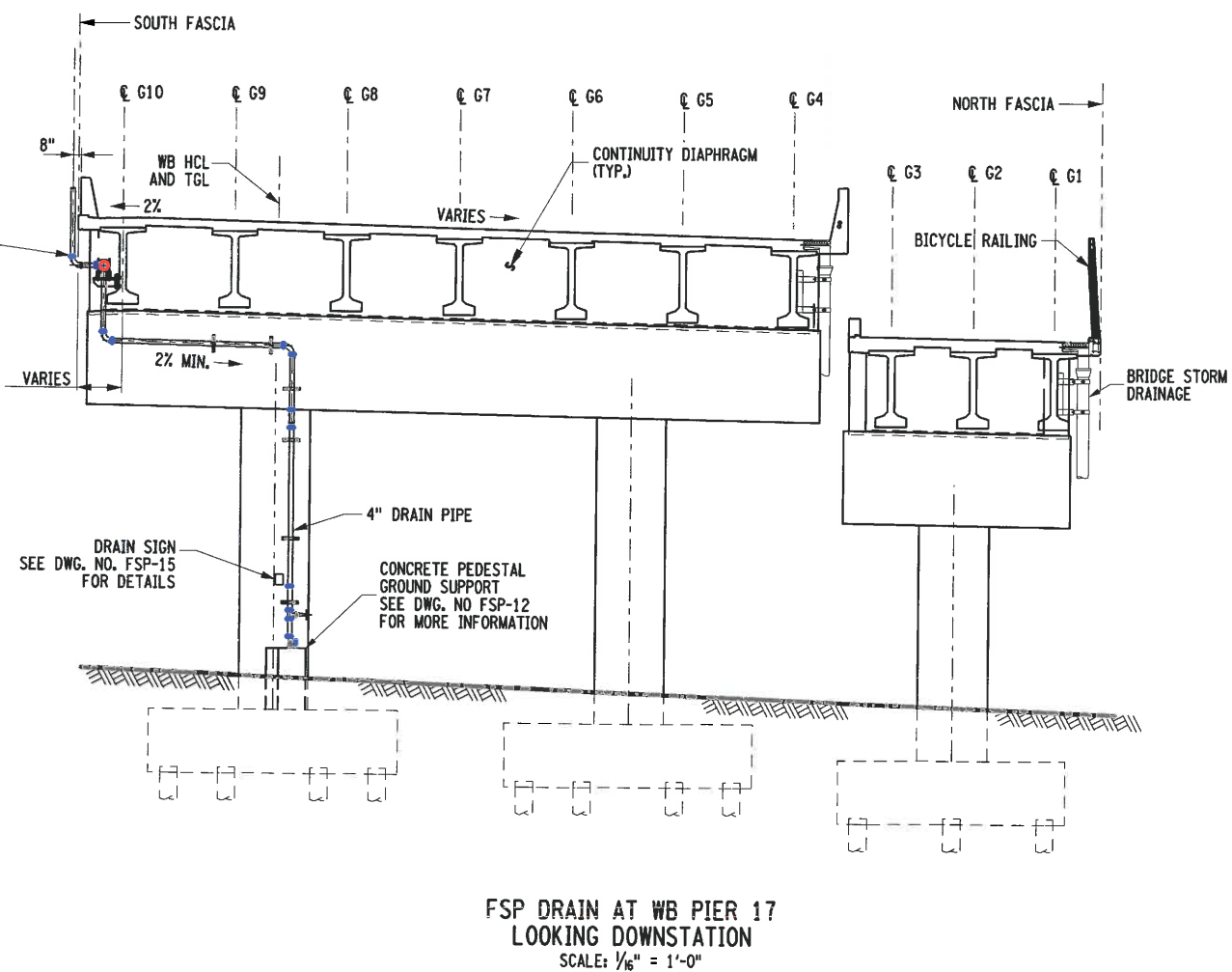
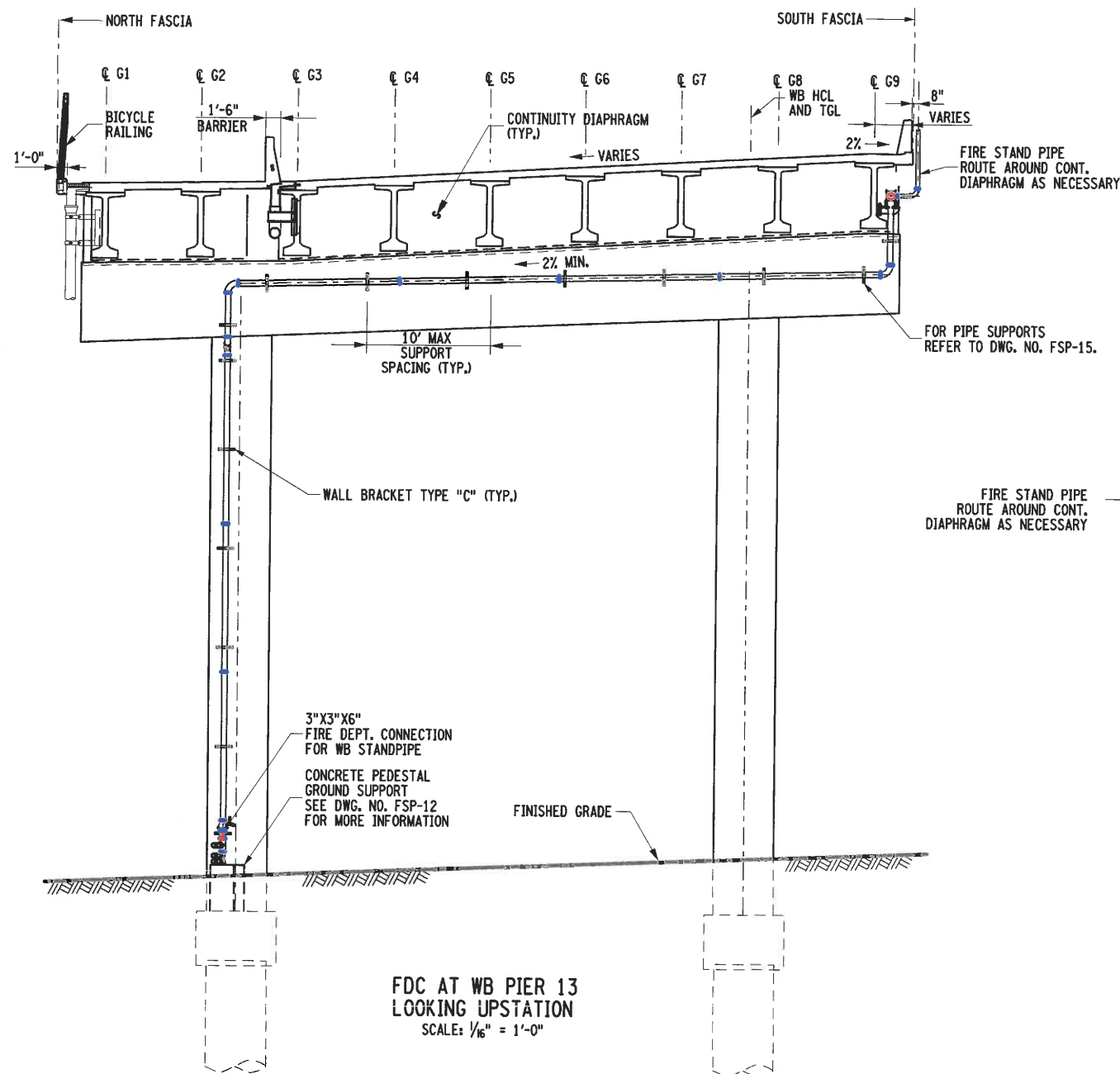
IT IS A VIOLATION OF LAW FOR ANY PERSON, UNLESS THEY ARE ACTING UNDER THE DIRECTION OF A LICENSED PROFESSIONAL ENGINEER, ARCHITECT, LANDSCAPE ARCHITECT, OR LAND SURVEYOR, TO ALTER AN ITEM IN ANY WAY. IF AN ITEM BEARING THE STAMP OF A LICENSED PROFESSIONAL IS ALTERED, THE ALTERING ENGINEER, ARCHITECT, LANDSCAPE ARCHITECT, OR LAND SURVEYOR SHALL STAMP THE DOCUMENT AND INCLUDE THE NOTATION "ALTERED BY" FOLLOWED BY THEIR SIGNATURE, THE DATE OF SUCH ALTERATION, AND A SPECIFIC DESCRIPTION OF THE ALTERATION.



Department of
Transportation

FILE NAME = X73124.FSP-08 Pier Sections WB13 & WB17.dgn
DATE/TIME = 17-FEB-2017 16:22
USER = mdepinto

DESIGN SUPERVISOR D. WAN
JOB MANAGER M. MOHRMANN
DESIGN D. DELLE DONNE
CHECK D. DELLE DONNE
R. ROMAN
DRAFTING
R. GRILLO
CHECK
E. RECIO
PROJECT MANAGER D. WAN



AFFIX SEAL: HARDESTY & HANOVER LLC
ON: 2/24/2017

ALTERED BY:
ON:



AS-BUILT REVISIONS
DESCRIPTION OF ALTERATIONS:

REPLACEMENT OF THE KOSCIUSKO BRIDGE OVER NEWTOWN CREEK
PHASE 2
I-278, BROOKLYN - QUEENS EXPRESSWAY
COUNTY: KINGS AND QUEENS REGION: 11

PIN X729.77

BRIDGES
1079732

CULVERTS

ALL DIMENSIONS IN FT UNLESS OTHERWISE NOTED

FIRE STANDPIPE
QUEENS APPROACH PIERS
WB13 & WB17

CONTRACT NUMBER
D263452

DRAWING NO. FSP-08
SHEET NO. 485

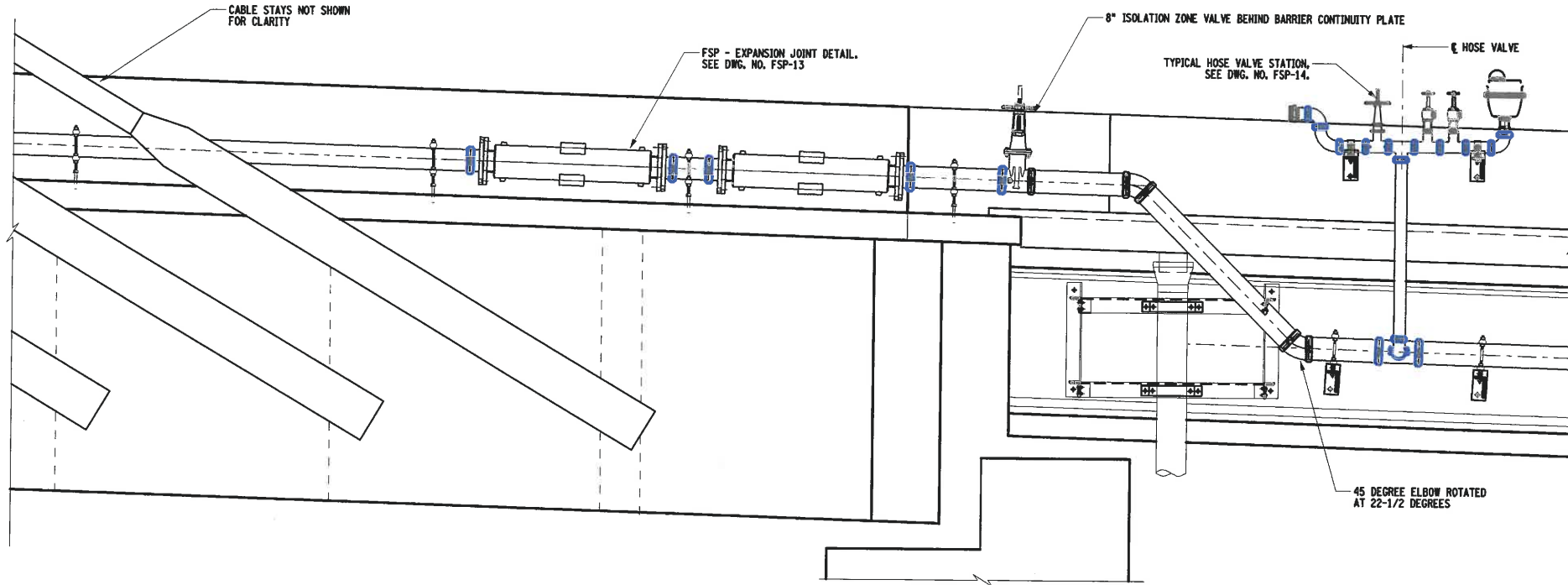
IT IS A VIOLATION OF LAW FOR ANY PERSON, UNLESS THEY ARE ACTING UNDER THE DIRECTION OF A LICENSED PROFESSIONAL ENGINEER, ARCHITECT, LANDSCAPE ARCHITECT, OR LAND SURVEYOR, TO ALTER AN ITEM IN ANY WAY. IF AN ITEM BEARING THE STAMP OF A LICENSED PROFESSIONAL IS ALTERED, THE ALTERING ENGINEER, ARCHITECT, LANDSCAPE ARCHITECT, OR LAND SURVEYOR SHALL STAMP THE DOCUMENT AND INCLUDE THE NOTATION "ALTERED BY" FOLLOWED BY THEIR SIGNATURE, THE DATE OF SUCH ALTERATION, AND A SPECIFIC DESCRIPTION OF THE ALTERATION.



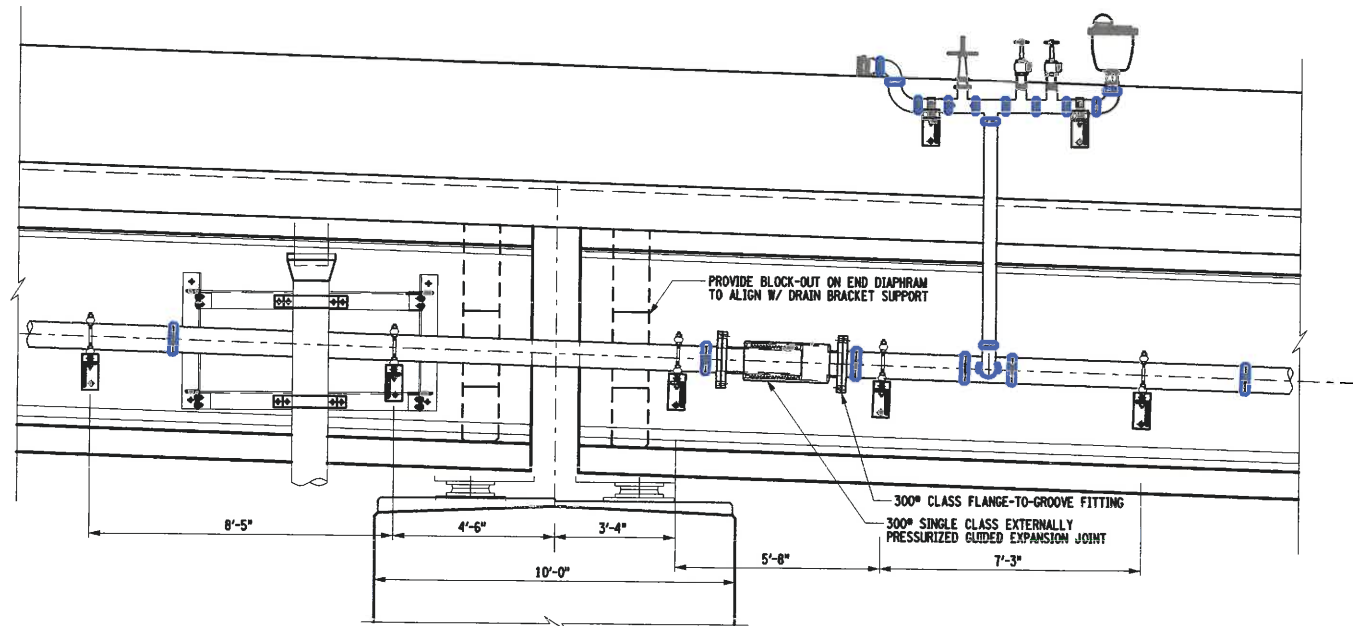
Department of
Transportation

FILE NAME = x71324.FSP-09 Section Details.dgn
DATE/TIME = 17-FEB-2017 16:22
USER = mdepinto

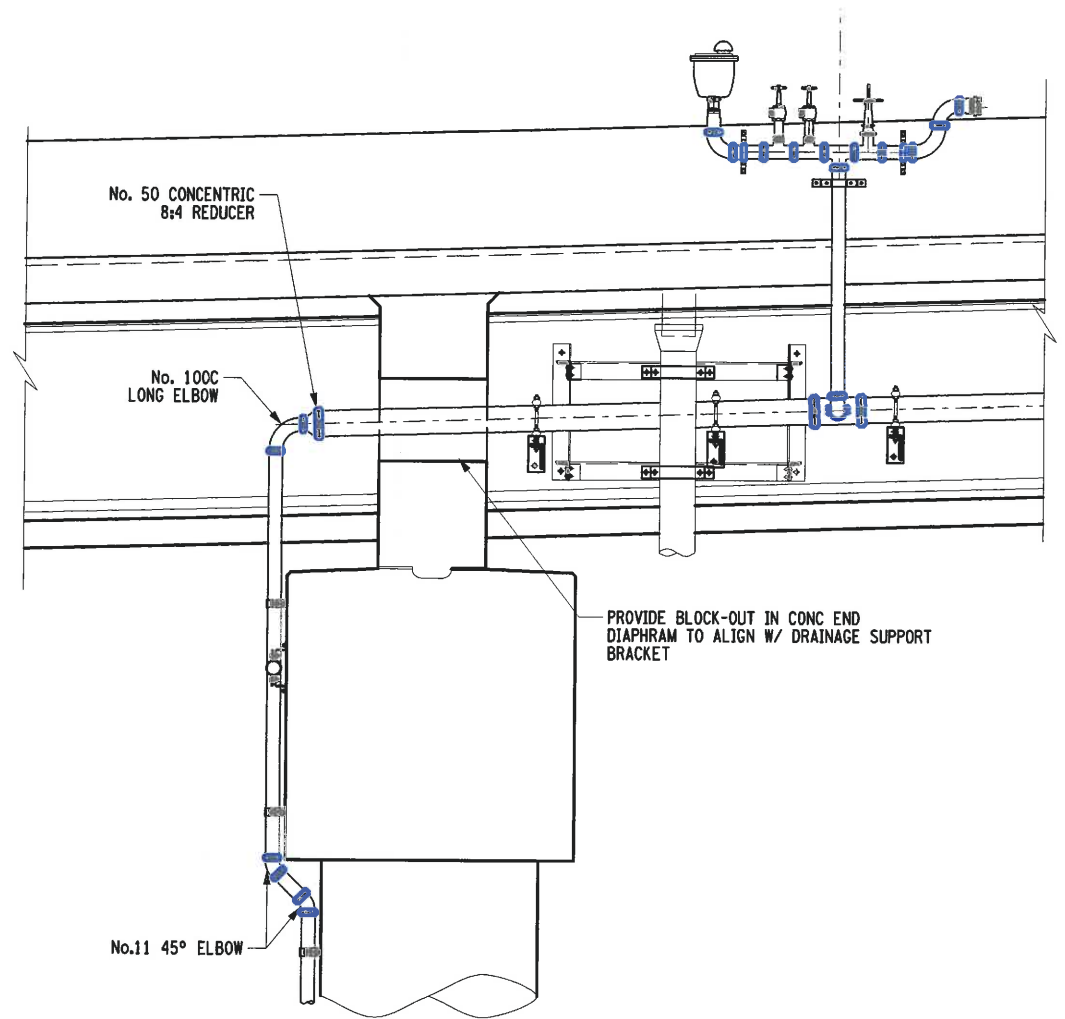
DESIGN SUPERVISOR D. WAN
JOB MANAGER M. MOHRMANN
DESIGN D. DELLE DONNE
CHECK
DRAFTING R. GRILLO
CHECK
PROJECT MANAGER E. RECIO
D. WAN



PIPE EXPANSION JOINT AT MAINSPAN WB11
SCALE: 3/16"=1'-0"



PIPE EXPANSION JOINT AT PIER WB15
SCALE: 3/16"=1'-0"



FSP DRAIN AT PIER WB1
SCALE: 3/16"=1'-0"

AFFIX SEAL: HARDESTY & HANOVER LLC
ON: 2/24/2017

ALTERED BY:
ON:



AS-BUILT REVISIONS
DESCRIPTION OF ALTERATIONS:

REPLACEMENT OF THE KOSCIUSZKO BRIDGE OVER NEWTOWN CREEK
PHASE 2
1-278, BROOKLYN - QUEENS EXPRESSWAY
COUNTY: KINGS AND QUEENS REGION: 11

PIN X729.77

BRIDGES
1079732

CULVERTS

ALL DIMENSIONS IN FT UNLESS OTHERWISE NOTED

FIRE STANDPIPE
SECTION DETAILS

CONTRACT NUMBER
D263452

DRAWING NO. FSP-09
SHEET NO. 486

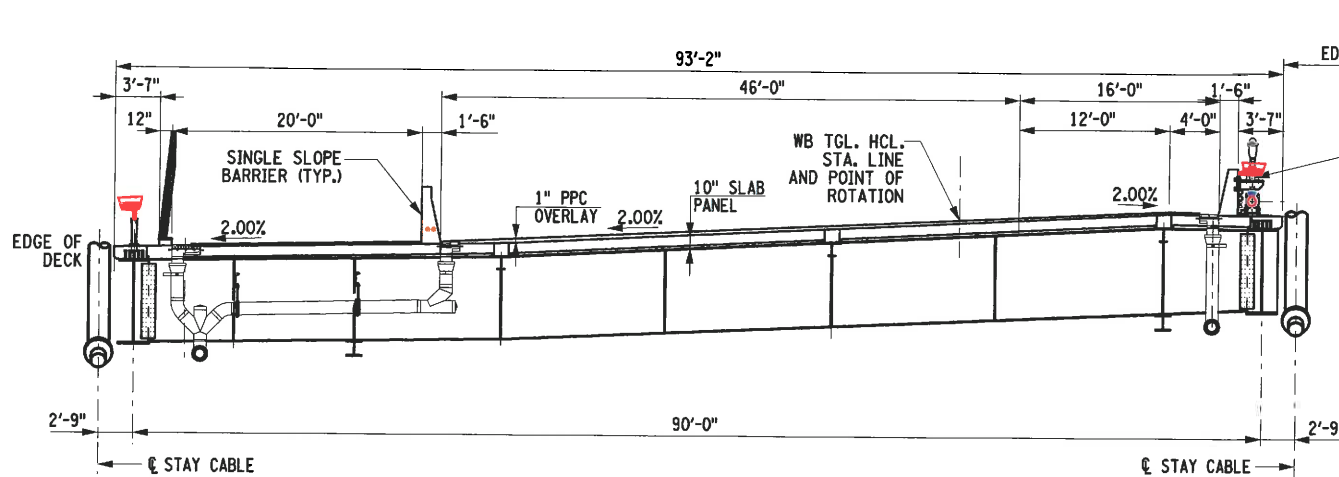
IT IS A VIOLATION OF LAW FOR ANY PERSON, UNLESS THEY ARE ACTING UNDER THE DIRECTION OF A LICENSED PROFESSIONAL ENGINEER, ARCHITECT, LANDSCAPE ARCHITECT, OR LAND SURVEYOR, TO ALTER AN ITEM IN ANY WAY. IF AN ITEM BEARING THE STAMP OF A LICENSED PROFESSIONAL IS ALTERED, THE ALTERING ENGINEER, ARCHITECT, LANDSCAPE ARCHITECT, OR LAND SURVEYOR SHALL STAMP THE DOCUMENT AND INCLUDE THE NOTATION "ALTERED BY" FOLLOWED BY THEIR SIGNATURE, THE DATE OF SUCH ALTERATION, AND A SPECIFIC DESCRIPTION OF THE ALTERATION.



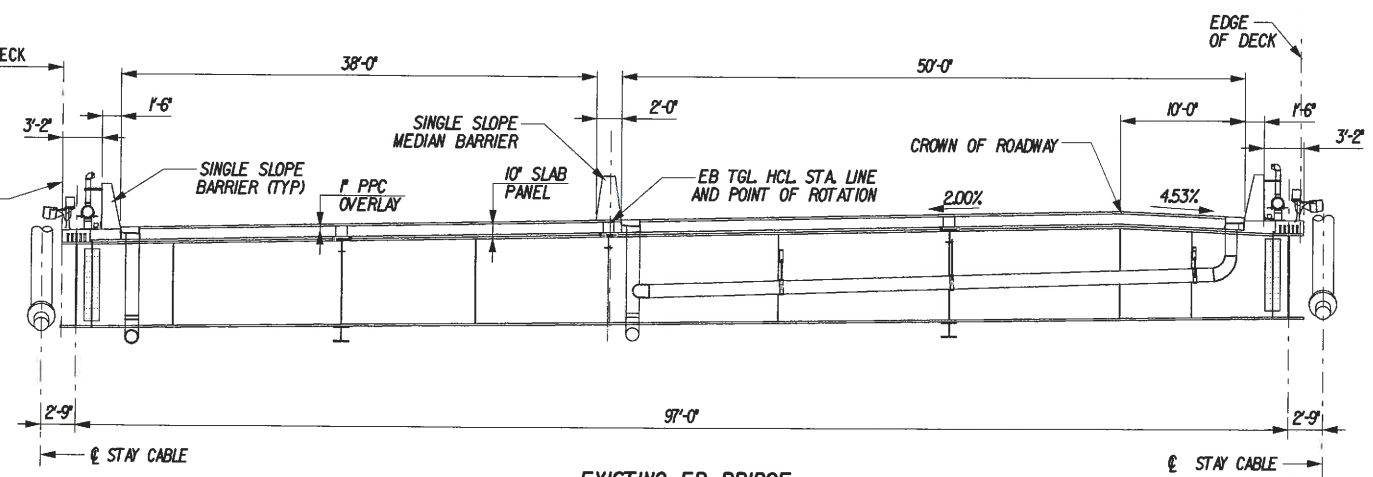
Department of
Transportation

FILE NAME = x71324.FSP-10_TransverseSectionMainSpan.dgn
DATE/TIME = 17-FEB-2017 16:22
USER = mdeputato

DESIGN SUPERVISOR D. WAN
JOB MANAGER M. MOHRMANN
DESIGN D. DELLE DONNE
CHECK D. DELLE DONNE
CHECK R. ROMAN
DRAFTING R. GRILLO
CHECK E. RECIO
PROJECT MANAGER D. WAN

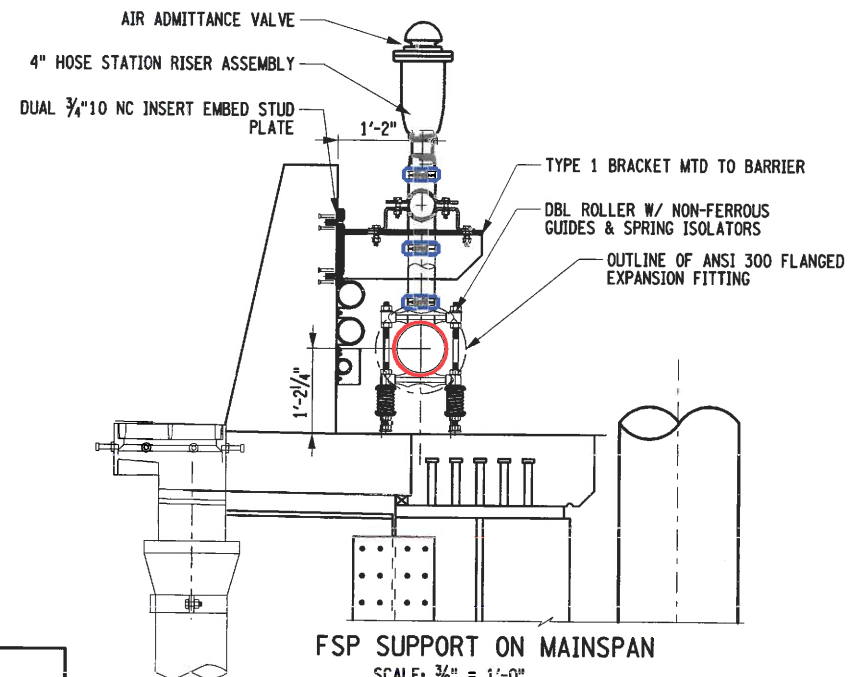


PROPOSED WB BRIDGE



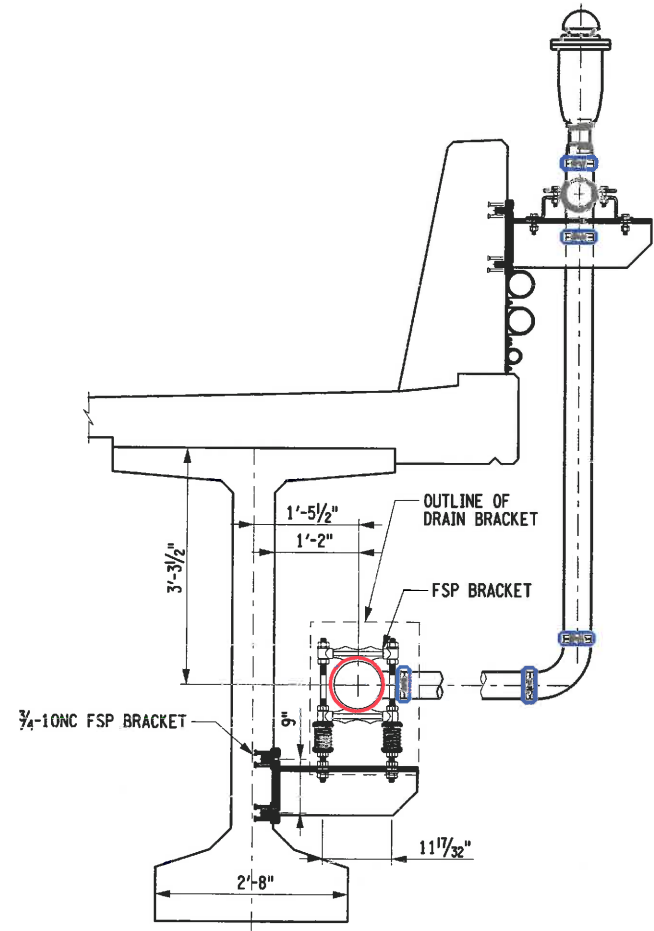
EXISTING EB BRIDGE
SHOWN FOR REFERENCE ONLY

TYPICAL SECTION AT NAVIGATION CHANNEL
SCALE: 1/16" = 1'-0"



FSP SUPPORT ON MAINSPAN
SCALE: 3/8" = 1'-0"

NOTE:
AESTHETIC LIGHTS NOT SHOWN FOR CLARITY.
SEE LIGHT FIXTURE DRAWINGS FOR DETAIL




FSP SUPPORT ON APPROACH SPANS
SCALE: 3/8" = 1'-0"

AFFIX SEAL: HARDESTY & HANOVER LLC
ON: 2/24/2017

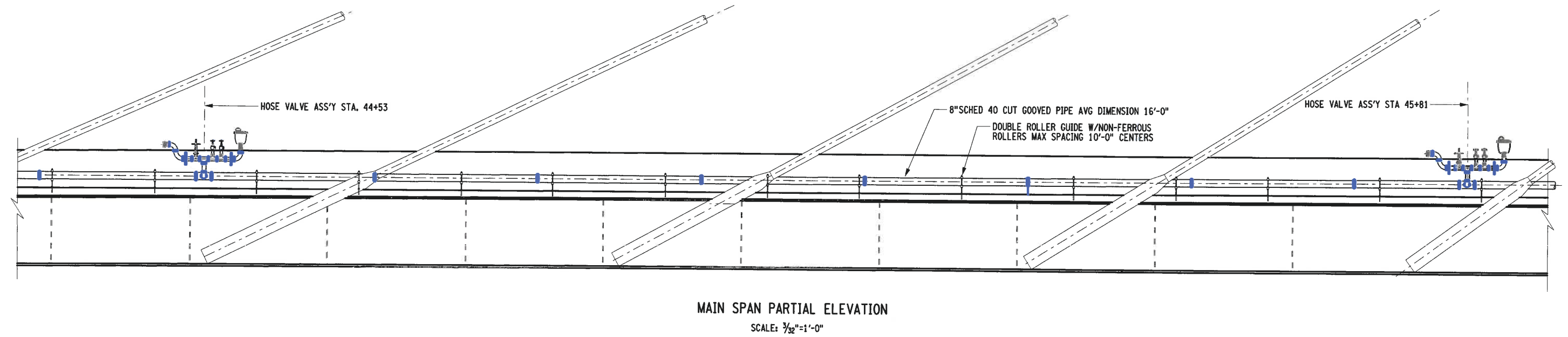
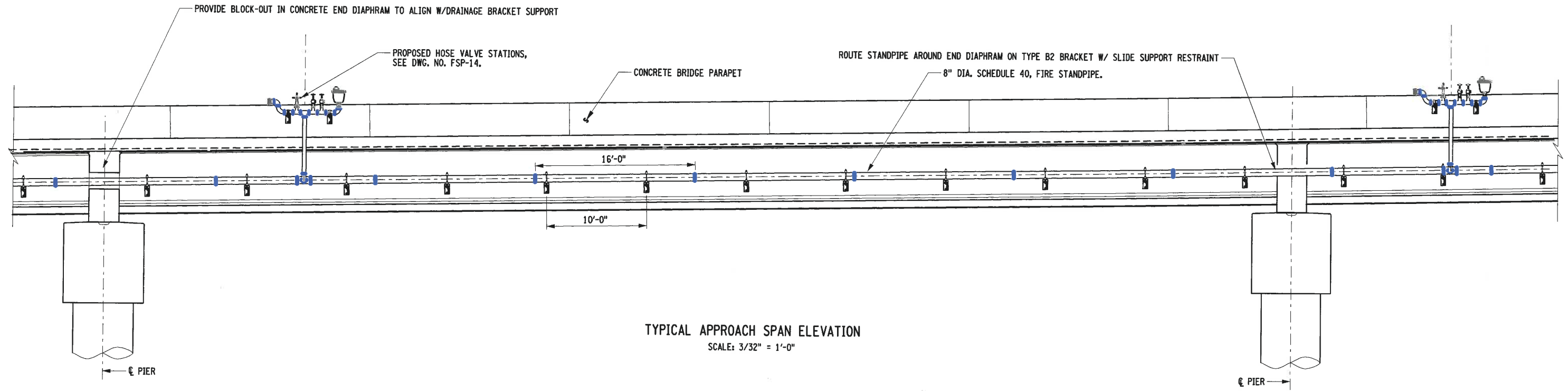
ALTERED BY:
ON:

REGISTERED ARCHITECT
DREW M. DELLE DONNE
STATE OF NEW YORK
020290

AS-BUILT REVISIONS DESCRIPTION OF ALTERATIONS:	REPLACEMENT OF THE KOSCIUSZKO BRIDGE OVER NEWTOWN CREEK		PIN X729.77	BRIDGES 1079732	CULVERTS	ALL DIMENSIONS IN FT UNLESS OTHERWISE NOTED		CONTRACT NUMBER D263452			
	PHASE 2					FIRE STANDPIPE TRANSVERSE SECTION MAIN SPAN		DRAWING NO. FSP-10 SHEET NO. 487			
	I-278, BROOKLYN - QUEENS EXPRESSWAY										
	COUNTY: KINGS AND QUEENS	REGION: 11									
IT IS A VIOLATION OF LAW FOR ANY PERSON, UNLESS THEY ARE ACTING UNDER THE DIRECTION OF A LICENSED PROFESSIONAL ENGINEER, ARCHITECT, LANDSCAPE ARCHITECT, OR LAND SURVEYOR, TO ALTER AN ITEM IN ANY WAY. IF AN ITEM BEARING THE STAMP OF A LICENSED PROFESSIONAL IS ALTERED, THE ALTERING ENGINEER, ARCHITECT, LANDSCAPE ARCHITECT, OR LAND SURVEYOR SHALL STAMP THE DOCUMENT AND INCLUDE THE NOTATION "ALTERED BY" FOLLOWED BY THEIR SIGNATURE, THE DATE OF SUCH ALTERATION, AND A SPECIFIC DESCRIPTION OF THE ALTERATION.										Department of Transportation	

FILE NAME = x71324.FSP-11 Typ Span Elevations.dgn
DATE/TIME = 17-FEB-2017 16:22
USER = mdepinto

DESIGN SUPERVISOR D. WAN
JOB MANAGER M. MOHRMANN
DESIGN D. DELLE DONNE
CHECK D. DELLE DONNE
CHECK R. ROMAN
DRAFTING R. GRILLO
CHECK E. RECIO
PROJECT MANAGER D. WAN



AFFIX SEAL: HARDESTY & HANOVER LLC
ON: 2/24/2017

ALTERED BY:
ON:

AS-BUILT REVISIONS DESCRIPTION OF ALTERATIONS:	REPLACEMENT OF THE KOSCIUSZKO BRIDGE OVER NEWTOWN CREEK	PIN X729.77	BRIDGES 1079732	CULVERTS	ALL DIMENSIONS IN FT UNLESS OTHERWISE NOTED	CONTRACT NUMBER D263452
	PHASE 2					
	1-278, BROOKLYN - QUEENS EXPRESSWAY				FIRE STANDPIPE TYPICAL SPAN ELEVATIONS	DRAWING NO. FSP-11
	COUNTY: KINGS AND QUEENS	REGION: 11				SHEET NO. 488

IT IS A VIOLATION OF LAW FOR ANY PERSON, UNLESS THEY ARE ACTING UNDER THE DIRECTION OF A LICENSED PROFESSIONAL ENGINEER, ARCHITECT, LANDSCAPE ARCHITECT, OR LAND SURVEYOR, TO ALTER AN ITEM IN ANY WAY. IF AN ITEM BEARING THE STAMP OF A LICENSED PROFESSIONAL IS ALTERED, THE ALTERING ENGINEER, ARCHITECT, LANDSCAPE ARCHITECT, OR LAND SURVEYOR SHALL STAMP THE DOCUMENT AND INCLUDE THE NOTATION "ALTERED BY" FOLLOWED BY THEIR SIGNATURE, THE DATE OF SUCH ALTERATION, AND A SPECIFIC DESCRIPTION OF THE ALTERATION.

Department of Transportation

FILE NAME = X73124.FSP.12 FDC details.dgn
DATE/TIME = 17-FEB-2017 16:50
USER = mdeputo

DESIGN SUPERVISOR D. WAN

JOB MANAGER M. MOHRMANN

DESIGN D. DELLE DONNE

CHECK

R. ROMAN

DRAFTING

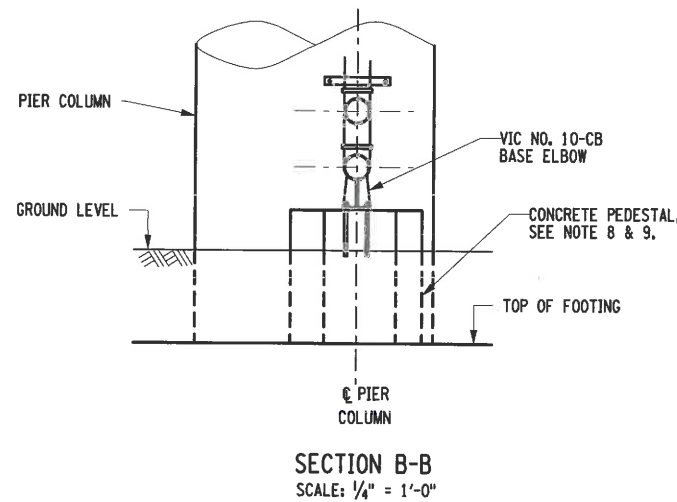
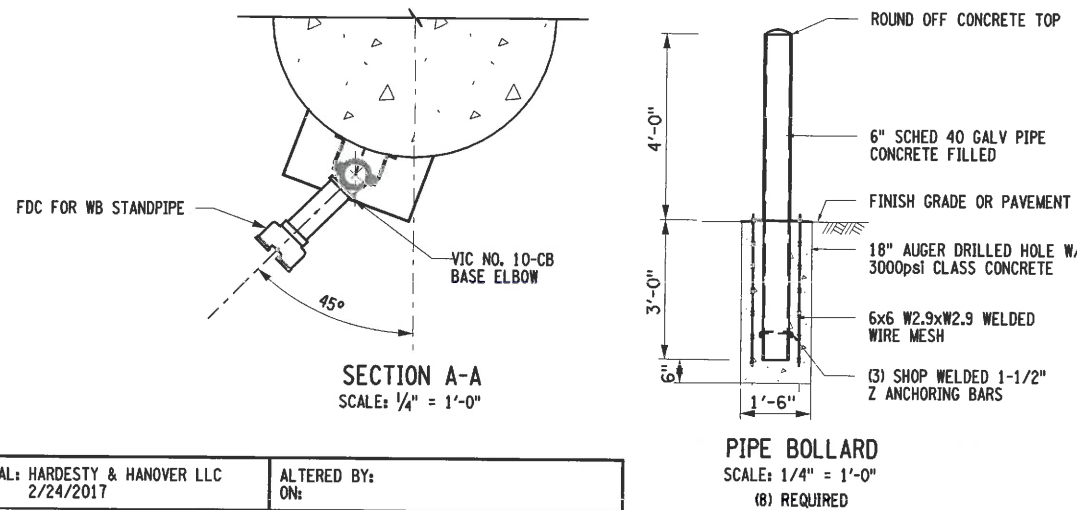
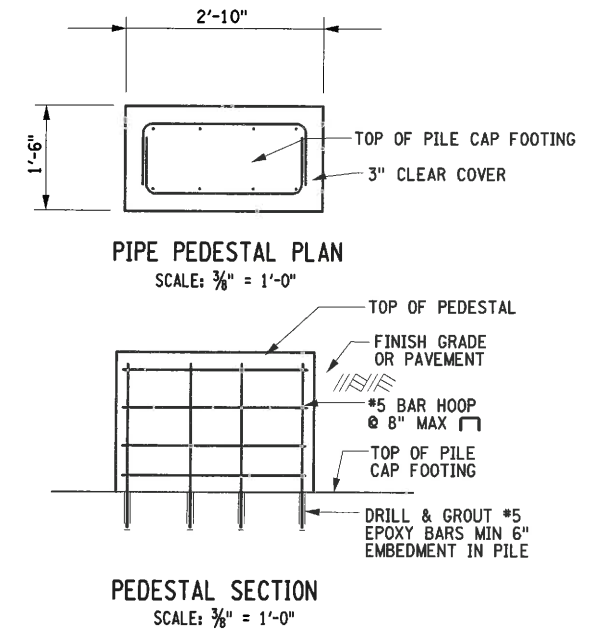
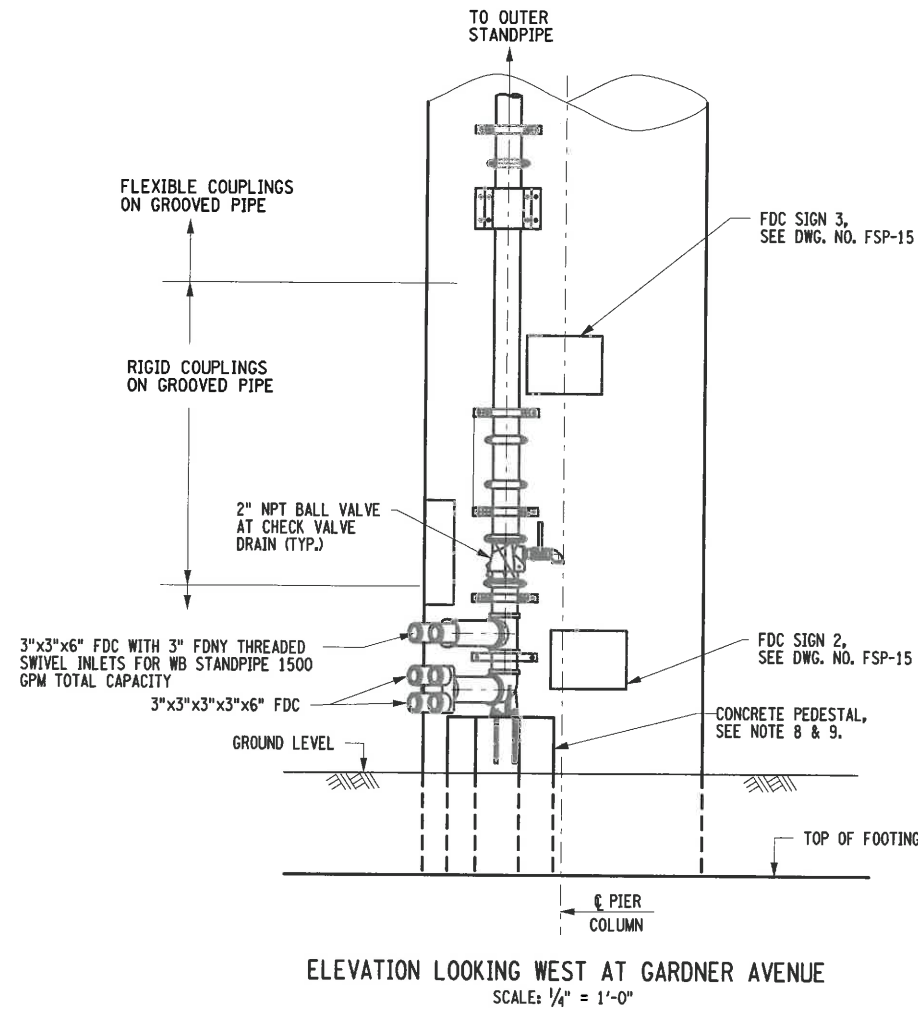
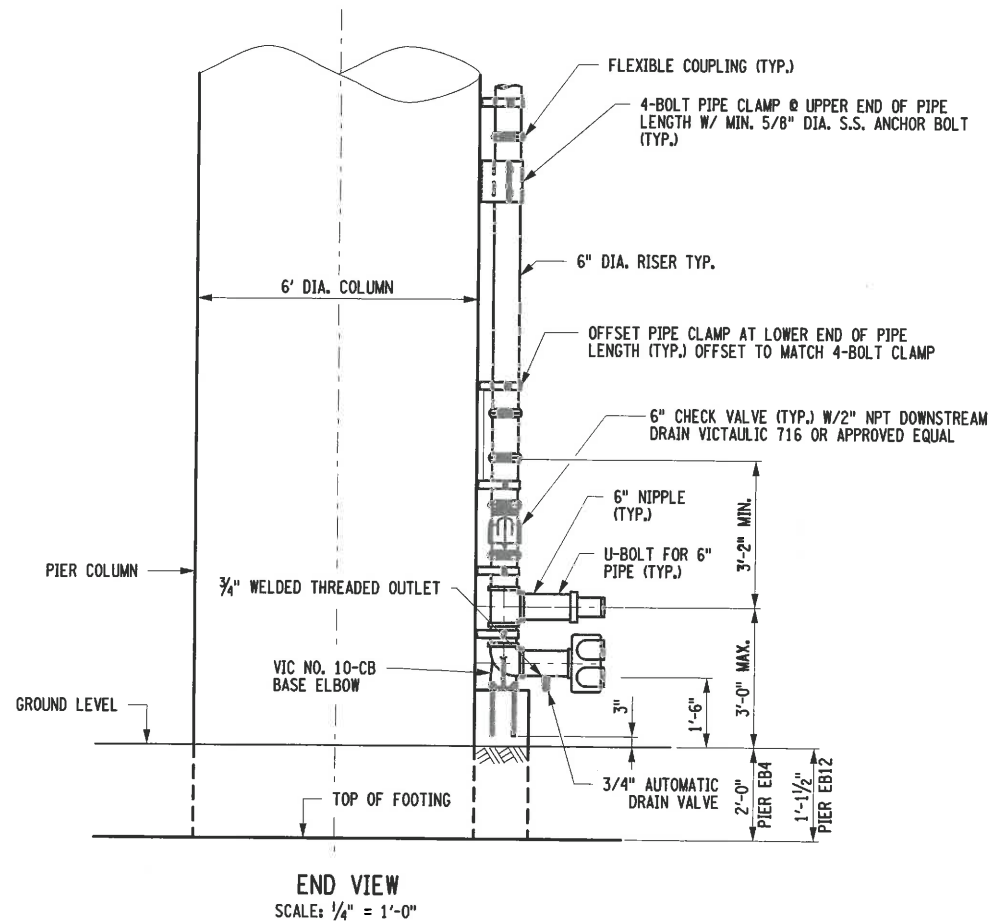
R. GRILLO

CHECK

E. RECIO

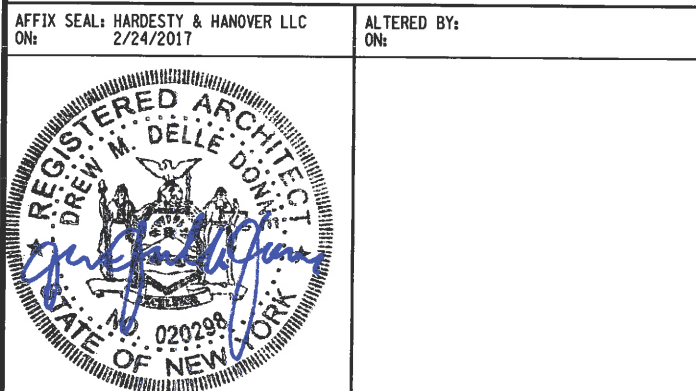
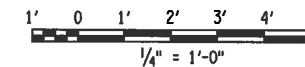
PROJECT MANAGER


D. WAN



NOTES:

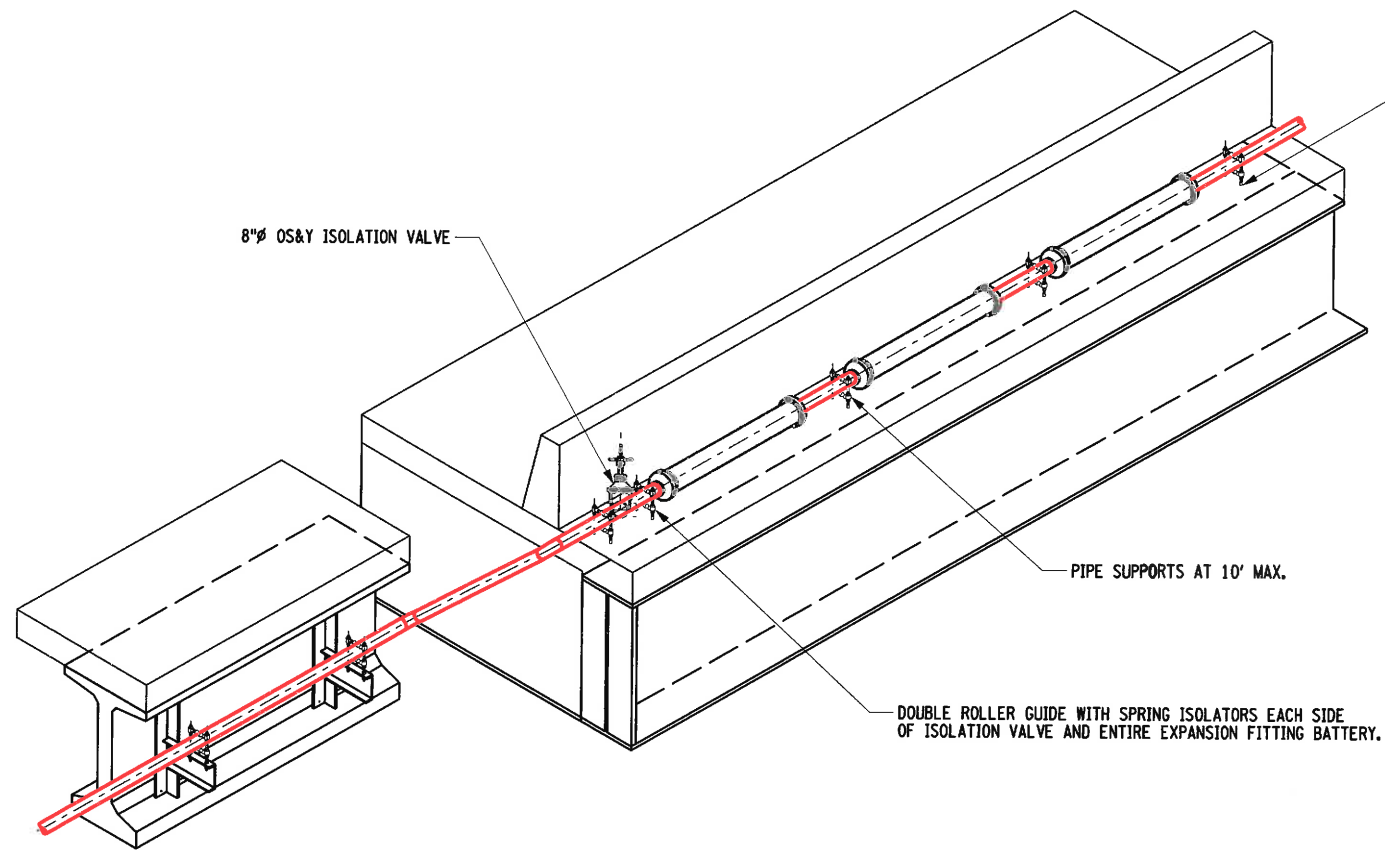
- PIER EB4 SHOWN, PIERS EB12, WB5 AND WB13 SIMILAR.
- ALL STANDPIPE PIPING TO BE ASTM A53-B ERW SCHEDULE 40 HOT DIPPED GALVANIZED STEEL WITH GROOVED ENDS EXCEPT AS SHOWN.
- FIRE DEPARTMENT CONNECTION (FDC) TO BE 3" INTERNAL THREADED SWIVEL FITTINGS WITH INDIVIDUAL CLAPPERS AND RED PAINTED CAPS, OR AS OTHERWISE REQUIRED BY FDNY.
- MAXIMUM HORIZONTAL PIPE SUPPORT SPACING AS SHOWN ON DRAWINGS, SEE GENERAL NOTES FSP-02.
- MAXIMUM VERTICAL PIPE SUPPORT SPACING AS SHOWN ON DRAWING, SEE GENERAL NOTES FSP-02.
- PROVIDE SIGNAGE AT EACH FDC PER NFPA AND FDNY REQUIREMENTS. SIGNAGE SHALL BE 1/8" (0.125") ALUMINUM REFLECTIVE MARKER SIGN WITH RED LETTERING ON A WHITE BACKGROUND WITH A RED BORDER. SEE SIGNAGE DETAILS ON DWG FSP-115
- SEE SPECIFICATIONS FOR ADDITIONAL REQUIREMENTS.
- PEDESTAL CONCRETE SHALL HAVE A MINIMUM COMPRESSIVE STRENGTH OF 3 KSI.
- REINFORCEMENT SHALL BE ASTM A615 GRADE 60.
- GROUT SHALL MEET THE REQUIREMENTS OF NYSDOT STANDARD SPECIFICATION 701-07.



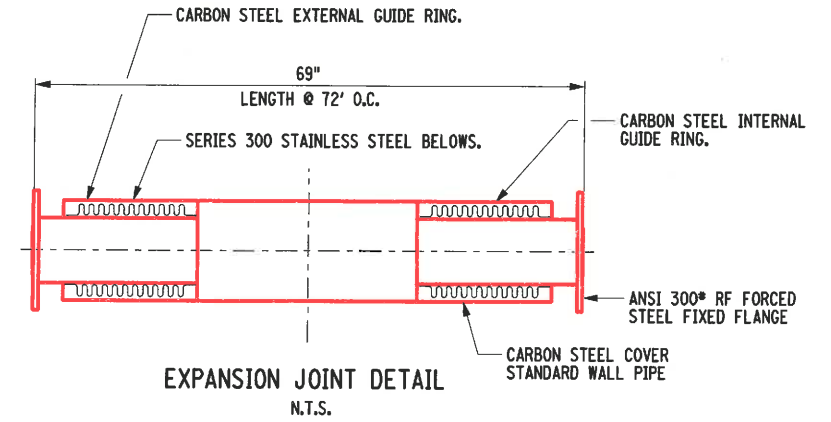
AS-BUILT REVISIONS DESCRIPTION OF ALTERATIONS:	REPLACEMENT OF THE KOSCIUSZKO BRIDGE OVER NEWTOWN CREEK	PIN X729.77	BRIDGES 1079732	CULVERTS	ALL DIMENSIONS IN FT UNLESS OTHERWISE NOTED	CONTRACT NUMBER D263452
	PHASE 2				FIRE STANDPIPE FIRE DEPT. CONNECTION DETAILS	DRAWING NO. FSP-12 SHEET NO. 489
	I-278, BROOKLYN - QUEENS EXPRESSWAY					
	COUNTY: KINGS AND QUEENS					
IT IS A VIOLATION OF LAW FOR ANY PERSON, UNLESS THEY ARE ACTING UNDER THE DIRECTION OF A LICENSED PROFESSIONAL ENGINEER, ARCHITECT, LANDSCAPE ARCHITECT, OR LAND SURVEYOR, TO ALTER AN ITEM IN ANY WAY. IF AN ITEM BEARING THE STAMP OF A LICENSED PROFESSIONAL IS ALTERED, THE ALTERING ENGINEER, ARCHITECT, LANDSCAPE ARCHITECT, OR LAND SURVEYOR SHALL STAMP THE DOCUMENT AND INCLUDE THE NOTATION "ALTERED BY" FOLLOWED BY THEIR SIGNATURE, THE DATE OF SUCH ALTERATION, AND A SPECIFIC DESCRIPTION OF THE ALTERATION.						
<div>NEW YORK STATE OF OPPORTUNITY.</div> <div>Department of Transportation</div>						

FILE NAME = x71324_FSP-13_standpipe_details_1.dgn
DATE/TIME = 17-FEB-2017 16:22
USER = mdepinio

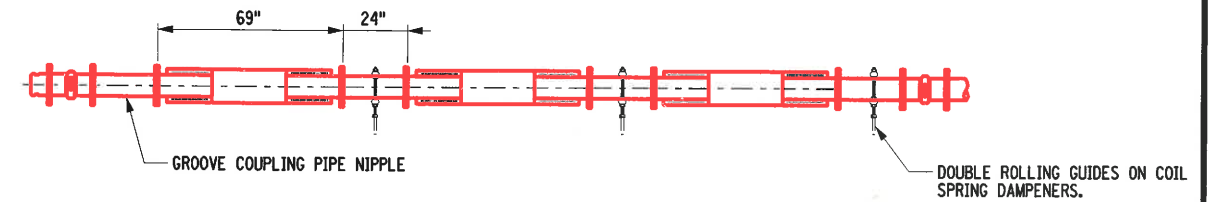
DESIGN SUPERVISOR D. WAN
JOB MANAGER M. MOHRMANN
DESIGN D. DELLE DONNE
CHECK
DRAFTING R. GRILLO
CHECK E. RECIO
PROJECT MANAGER D. WAN



EXPANSION JOINT ISOMETRIC
N.T.S.



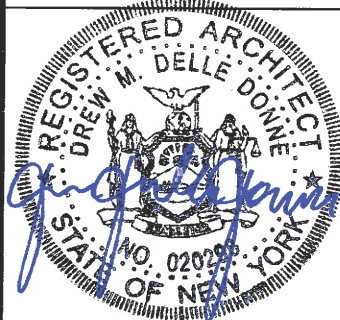
NOTE:
EXPANSION JOINT BASIS OF DESIGN MODEL
FP-D-300 EXTERNALLY PRESSURIZED
GUIDED EXPANSION JOINT BY F6X PRESS.



(3) EXPANSION JOINTS IN SERIES
N.T.S.

AFFIX SEAL: HARDESTY & HANOVER LLC
ON: 2/24/2017

ALTERED BY:
ON:



AS-BUILT REVISIONS
DESCRIPTION OF ALTERATIONS:

REPLACEMENT OF THE KOSCIUSZKO BRIDGE OVER NEWTOWN CREEK

PIN X729.77

BRIDGES
1079732

CULVERTS

ALL DIMENSIONS IN FT UNLESS OTHERWISE NOTED

CONTRACT NUMBER
D263452

FIRE STANDPIPE
BRIDGE EXPANSION JOINT
DETAILS

DRAWING NO. FSP-13
SHEET NO. 490

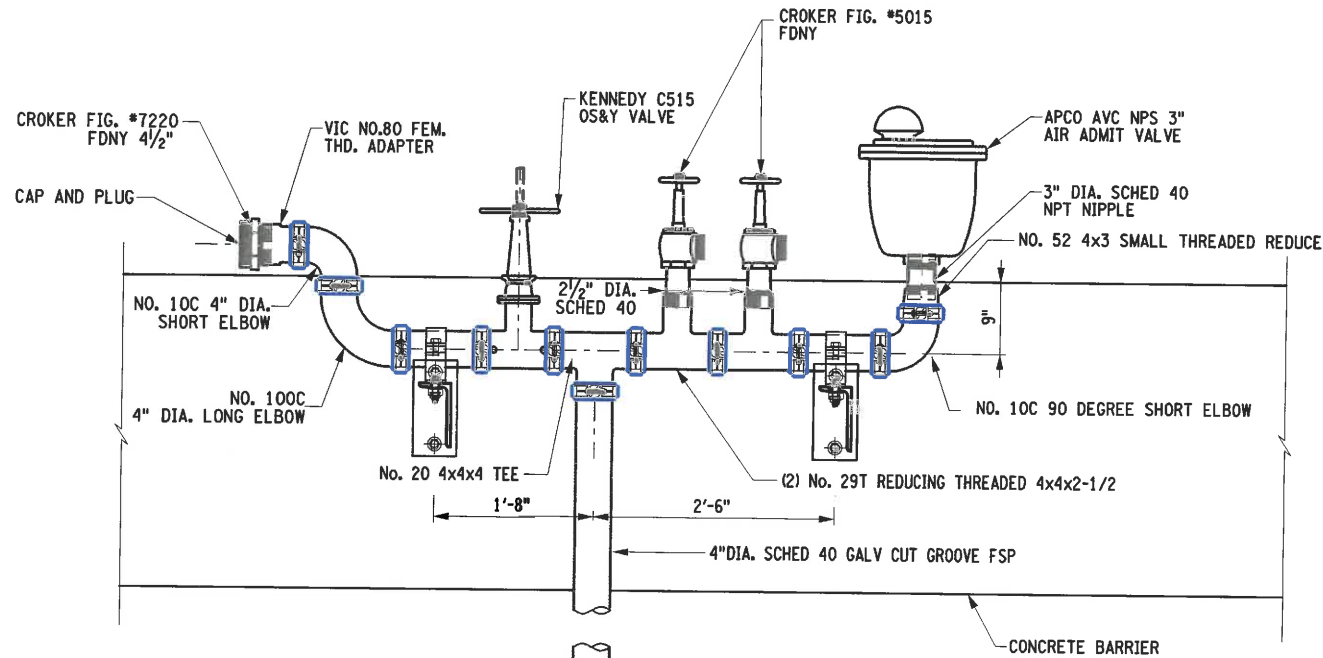
IT IS A VIOLATION OF LAW FOR ANY PERSON, UNLESS THEY ARE ACTING UNDER THE DIRECTION OF A LICENSED PROFESSIONAL ENGINEER, ARCHITECT, LANDSCAPE ARCHITECT, OR LAND SURVEYOR, TO ALTER AN ITEM IN ANY WAY. IF AN ITEM BEARING THE STAMP OF A LICENSED PROFESSIONAL IS ALTERED, THE ALTERING ENGINEER, ARCHITECT, LANDSCAPE ARCHITECT, OR LAND SURVEYOR SHALL STAMP THE DOCUMENT AND INCLUDE THE NOTATION "ALTERED BY" FOLLOWED BY THEIR SIGNATURE, THE DATE OF SUCH ALTERATION, AND A SPECIFIC DESCRIPTION OF THE ALTERATION.



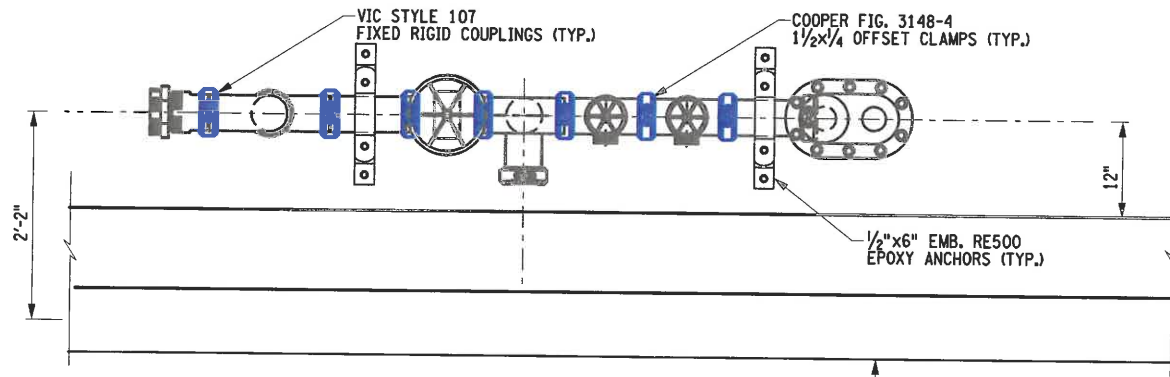
Department of
Transportation

FILE NAME = x71324.FSP.14 standpipe_details.2.dgn
DATE/TIME = 17-FEB-2017 16:22
USER = mdepinto

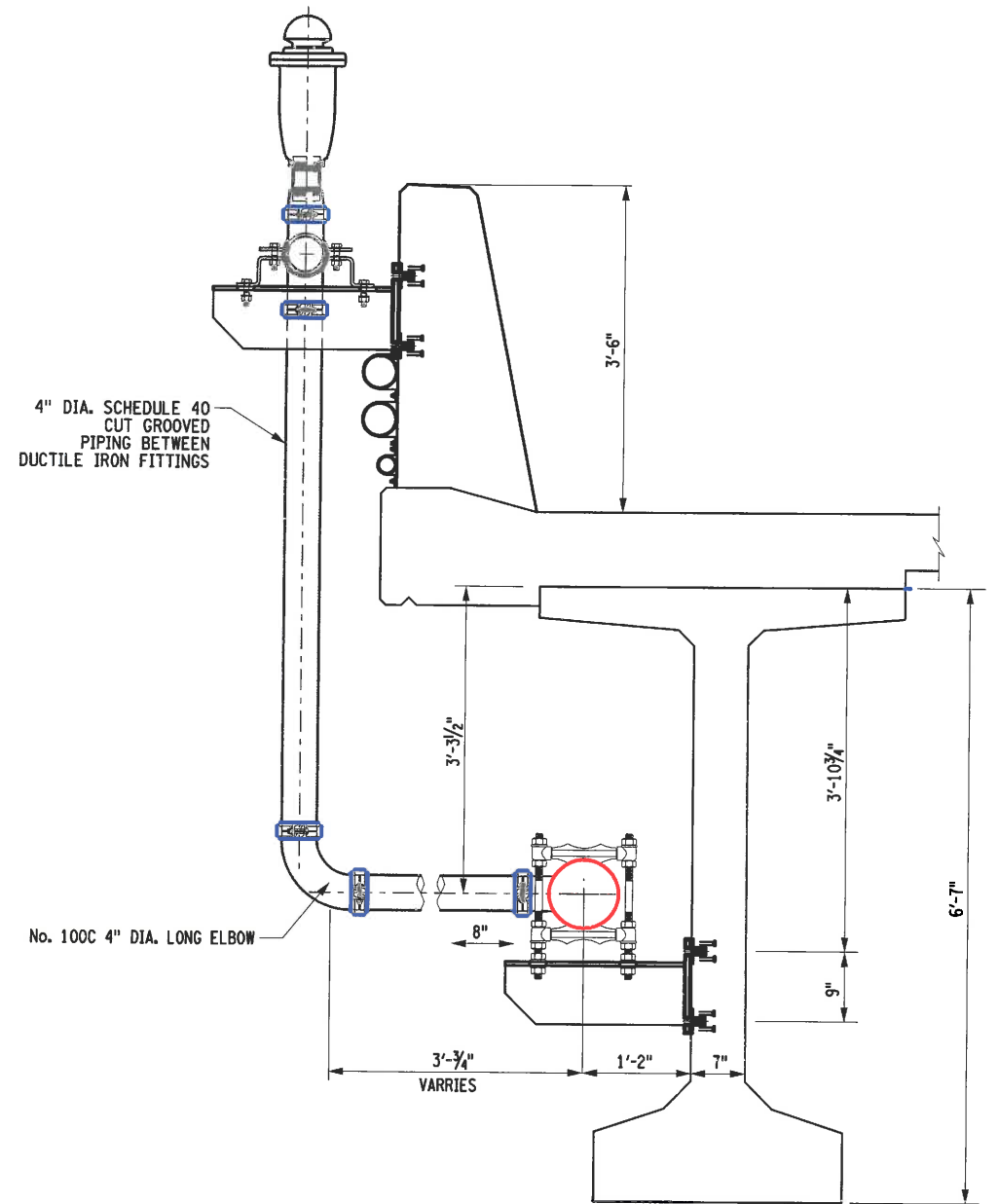
DESIGN SUPERVISOR D. WAN
JOB MANAGER M. MOHRMANN
DESIGN D. DELLE DONNE
CHECK D. DELLE DONNE
DRAFTING R. ROMAN
CHECK R. GRILLO
PROJECT MANAGER E. RECIO
D. WAN



FASCIA ELEVATION
SCALE: 1/2" = 1'-0"



RISER/FASCIA PLAN
SCALE: 1/2" = 1'-0"



SECTION AT RISER
SCALE: 1/2" = 1'-0"

NOTES:

1. ALL HARDWARE PAID UNDER ITEM 663.01010004.
2. ALL NIPPLES SHALL BE HOT DIPPED GALVANIZED.

AFFIX SEAL: HARDESTY & HANOVER LLC
ON: 2/24/2017

ALTERED BY:
ON:

REGISTERED ARCHITECT
DREW M. DELLE DONNE
STATE OF NEW YORK
NO. 020298

AS-BUILT REVISIONS
DESCRIPTION OF ALTERATIONS:

IT IS A VIOLATION OF LAW FOR ANY PERSON, UNLESS THEY ARE ACTING UNDER THE DIRECTION OF A LICENSED PROFESSIONAL ENGINEER, ARCHITECT, LANDSCAPE ARCHITECT, OR LAND SURVEYOR, TO ALTER AN ITEM IN ANY WAY. IF AN ITEM BEARING THE STAMP OF A LICENSED PROFESSIONAL IS ALTERED, THE ALTERING ENGINEER, ARCHITECT, LANDSCAPE ARCHITECT, OR LAND SURVEYOR SHALL STAMP THE DOCUMENT AND INCLUDE THE NOTATION "ALTERED BY" FOLLOWED BY THEIR SIGNATURE, THE DATE OF SUCH ALTERATION, AND A SPECIFIC DESCRIPTION OF THE ALTERATION.

REPLACEMENT OF THE KOSCIUSZKO BRIDGE OVER NEWTOWN CREEK
PHASE 2
I-278, BROOKLYN - QUEENS EXPRESSWAY
COUNTY: KINGS AND QUEENS REGION: 11

PIN X729.77

BRIDGES
1079732

CULVERTS

ALL DIMENSIONS IN FT UNLESS OTHERWISE NOTED

FIRE STANDPIPE
HOSE VALVE STATIONS
DETAILS

CONTRACT NUMBER
D263452

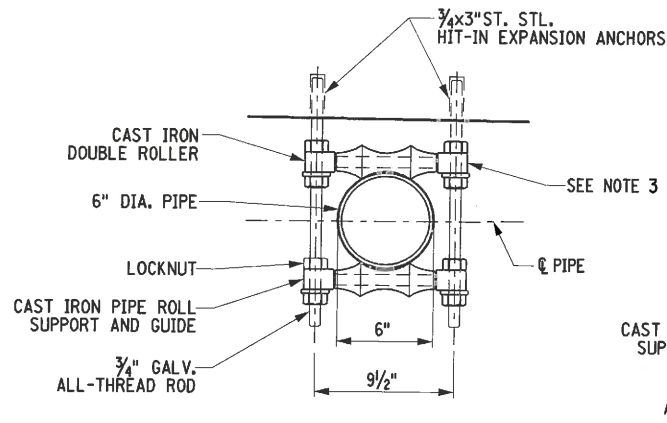
DRAWING NO. FSP-14
SHEET NO. 491



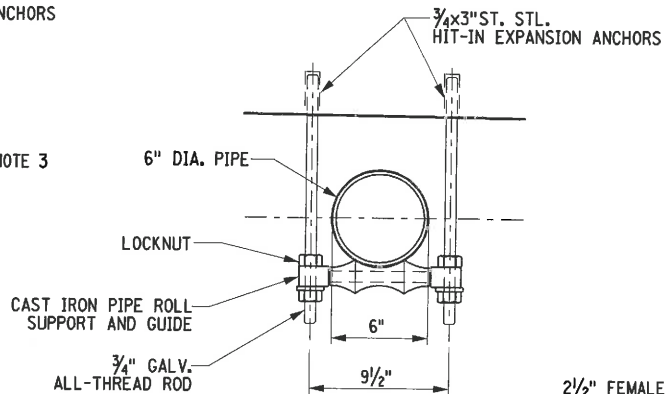
Department of
Transportation

FILE NAME = x71324.FSP-15_standpipe_details.dgn
DATE/TIME = 17-FEB-2017 16:22
USER = mdepinto

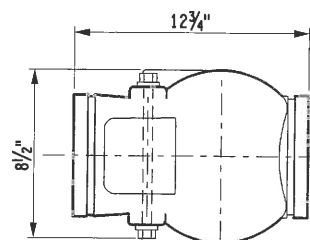
DESIGN SUPERVISOR D. WAN
JOB MANAGER M. MOHRMANN
DESIGN D. DELLE DONNE
CHECK D. DELLE DONNE
CHECK D. ROMAN
DRAFTING R. GRILLO
CHECK E. RECIO
PROJECT MANAGER D. WAN



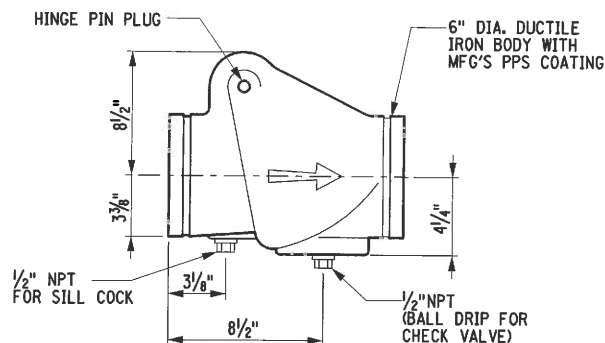
TYPE "A" PIPE SUPPORT HANGER
SCALE: 1/2"=1'-0"



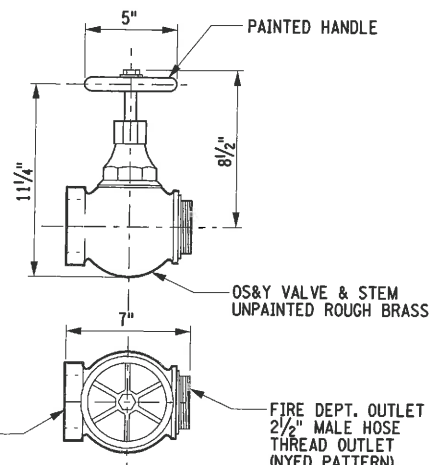
TYPE "B" PIPE ROLLER (TYPICAL)
SCALE: 1/2"=1'-0"



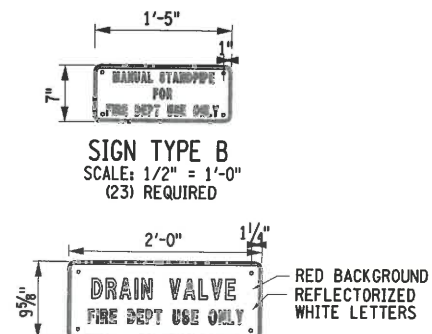
PLAN
SCALE: 1/2"=1'-0"



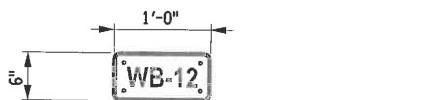
ELEVATION
CHECK VALVE
SCALE: 1/2"=1'-0"



HOSE VALVE
SCALE: 1/2"=1'-0"

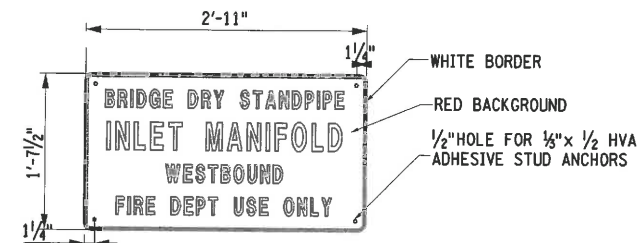


SIGN TYPE B
SCALE: 1/2" = 1'-0"
(23) REQUIRED



SIGN TYPE C
(2) REQUIRED

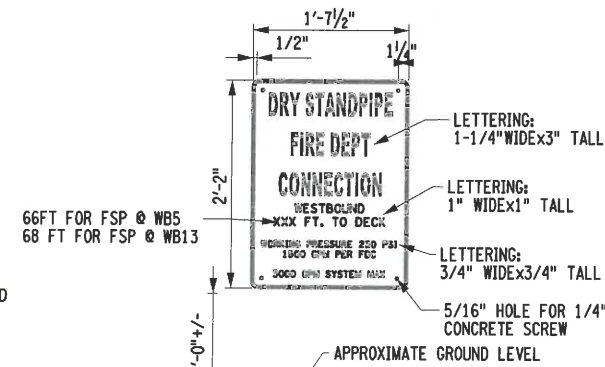
HOSE VALVE STATIONS
SCALE: 1/2" = 1'-0"
LOCATE ADJACENT TO FDC SIGN TYPE B
(2) REQUIRED



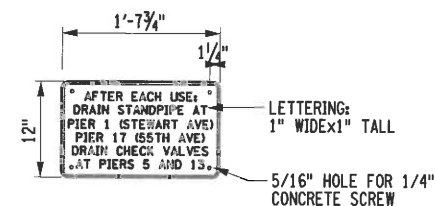
SIGN TYPE A
SCALE: 1/2" = 1'-0"
(2) REQUIRED

SIGNAGE NOTES:

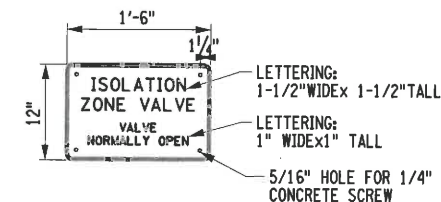
- FABRICATE AND INSTALL ALL SIGNS IN ACCORDANCE WITH STANDARD SPECIFICATIONS SECTION 645 SIGNS, MATERIALS SUBSECTIONS AND WITH MATERIALS FROM APPROVED PRODUCT VENDORS.
- FIRE DEPT. SIGNAGE SHALL BE PAID FOR UNDER ITEM 663.01010004 - DRY STANDPIPE
- SIGN PLATES SHALL BE MIN 1/8" (0.125") THICK ALUMINUM ASTM B209M 6061-T6 OR EQUIVALENT ALLOY AND TEMPER MEETING THE REQUIREMENTS OF MATERIALS 715-04 WROUGHT ALUMINUM.
- REFLECTORIZED SHEETING SHALL BE ASTM TYPE III (CLASS B MATERIAL DESIGNATION 730-05.02) REFLECTIVE SHEET BACKGROUND COLOR SHALL BE RED WITH REFLECTORIZED MIN 1 INCH HEIGHT WHITE LETTERS AND STANDARD BORDERS OF EQUAL INTENSITY.
- SIGN TYPE 'A' & 'C' SHALL BE ATTACHED TO IRREGULAR CONCRETE SURFACES WITH STAINLESS STEEL EXPANSION STUD ANCHORS AND PAIRS OF LEVELING AND JAMB NUTS WASHER AND SURFACE NUTS. ANY BOLT EXTENSIONS SHALL BE GROUND OFF SMOOTH WITH NUT.
- SIGN TYPE 'B' SHALL BE MOUNTED TO THE ROADWAY FACE OF CONCRETE BARRIER WITH STAINLESS STEEL EPOXY ADHESIVE BOLTS WITH ANY BOLT EXTENSIONS GROUND SMOOTH.
- VERIFY ALL SITE REQUIREMENTS & FDNY ACCEPTANCE OF SIGN MESSAGE AND SUBMIT A SIGN SCHEDULE PRIOR TO RELEASE FOR FABRICATION.



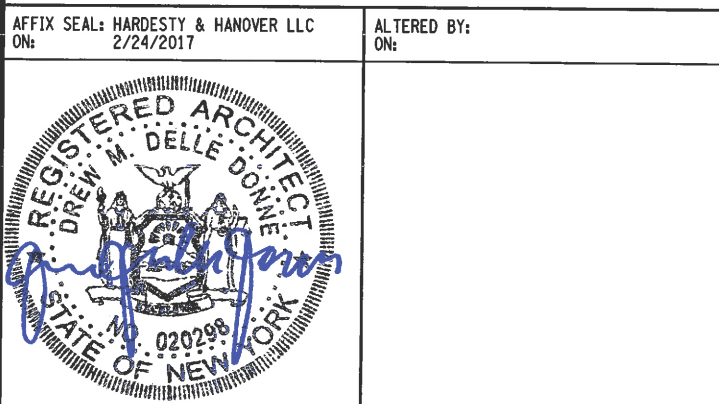
FDC SIGN 1
SCALE: 1/2" = 1'-0"
(2) REQUIRED



FDC SIGN 2
SCALE: 1/2" = 1'-0"
LOCATE ADJACENT TO FDC SIGN 1
(2) REQUIRED



FDC SIGN 3
SCALE: 1/2" = 1'-0"
LOCATE BELOW MAINSPAN ISOLATION OS&Y VALVE
(2) REQUIRED



AFFIX SEAL: HARDESTY & HANOVER LLC
ON: 2/24/2017
ALTERED BY:
ON:

AS-BUILT REVISIONS
DESCRIPTION OF ALTERATIONS:

REPLACEMENT OF THE KOSCIUSZKO BRIDGE OVER NEWTOWN CREEK
PHASE 2
I-278, BROOKLYN - QUEENS EXPRESSWAY
COUNTY: KINGS AND QUEENS REGION: 11

PIN X729.77

BRIDGES
1079732

CULVERTS

ALL DIMENSIONS IN FT UNLESS OTHERWISE NOTED

FIRE STANDPIPE
SIGNAGE, VALVES & HANGERS
DETAILS

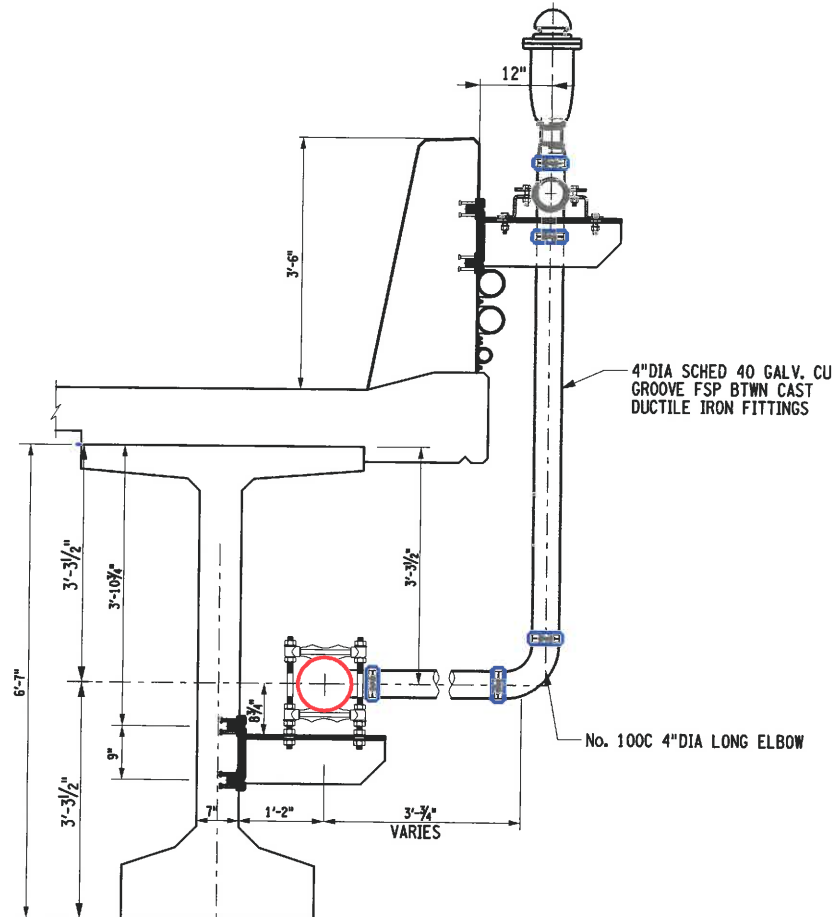
CONTRACT NUMBER
D263452

DRAWING NO. FSP-15
SHEET NO. 492

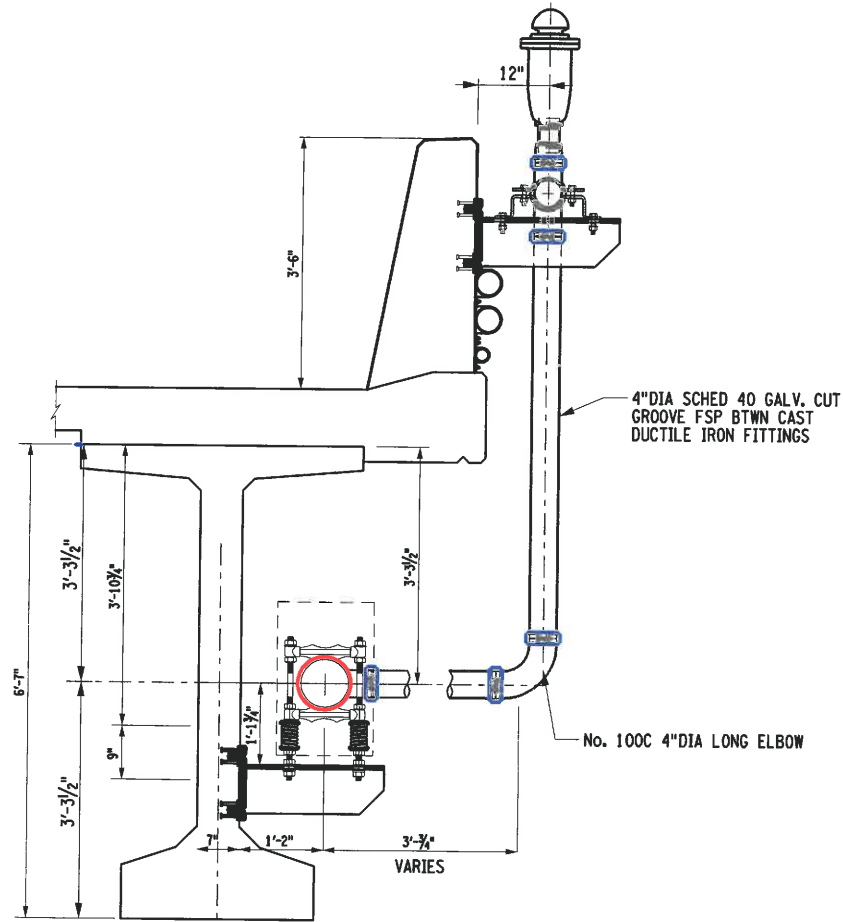
IT IS A VIOLATION OF LAW FOR ANY PERSON, UNLESS THEY ARE ACTING UNDER THE DIRECTION OF A LICENSED PROFESSIONAL ENGINEER, ARCHITECT, LANDSCAPE ARCHITECT, OR LAND SURVEYOR, TO ALTER AN ITEM IN ANY WAY. IF AN ITEM BEARING THE STAMP OF A LICENSED PROFESSIONAL IS ALTERED, THE ALTERING ENGINEER, ARCHITECT, LANDSCAPE ARCHITECT, OR LAND SURVEYOR SHALL STAMP THE DOCUMENT AND INCLUDE THE NOTATION "ALTERED BY" FOLLOWED BY THEIR SIGNATURE, THE DATE OF SUCH ALTERATION, AND A SPECIFIC DESCRIPTION OF THE ALTERATION.

FILE NAME = x71324.FSP.16 FSP bracket details.dgn
DATE/TIME = 17-FEB-2017 16:22
USER = mdepinto

DESIGN SUPERVISOR D. WAN
JOB MANAGER M. MOHRMANN
DESIGN D. DELLE DONNE
CHECK R. ROMAN
DRAFTING R. GRILLO
CHECK E. RECIO
PROJECT MANAGER D. WAN



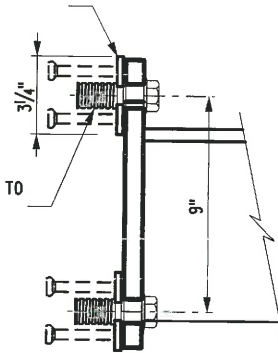
TYPE 1
SCALE: 3/8"=1'-0"



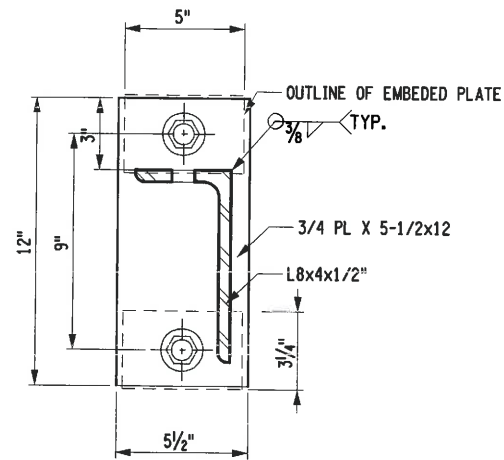
TYPE 1A

1/4x3-1/4x5 GALV. EMBEDMENT PLATE W/(4)
1/4"x4" WELDED NELSON STUDS BY PRECAST
ENGINEER SWL CAPACITY 10.3k EA.

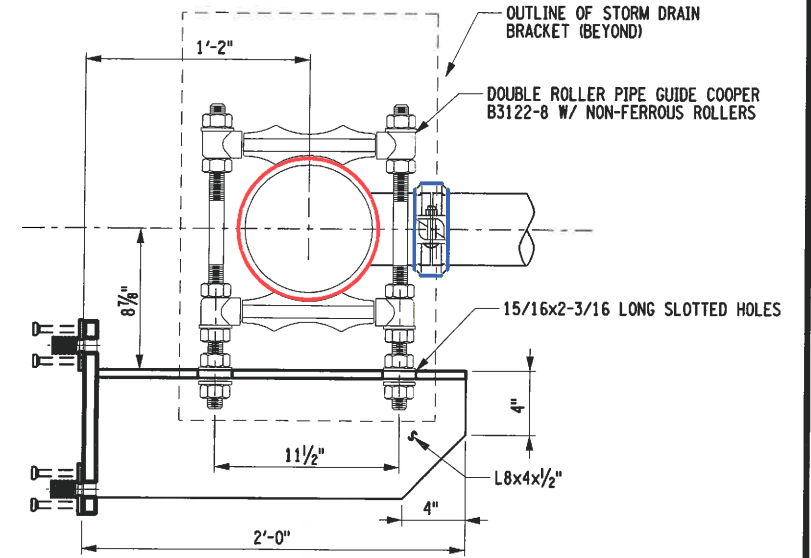
TYPE F43 PLAIN THREADED INSERT
3/4"x10 NC FERRULE TACK WELDED TO
PLATE



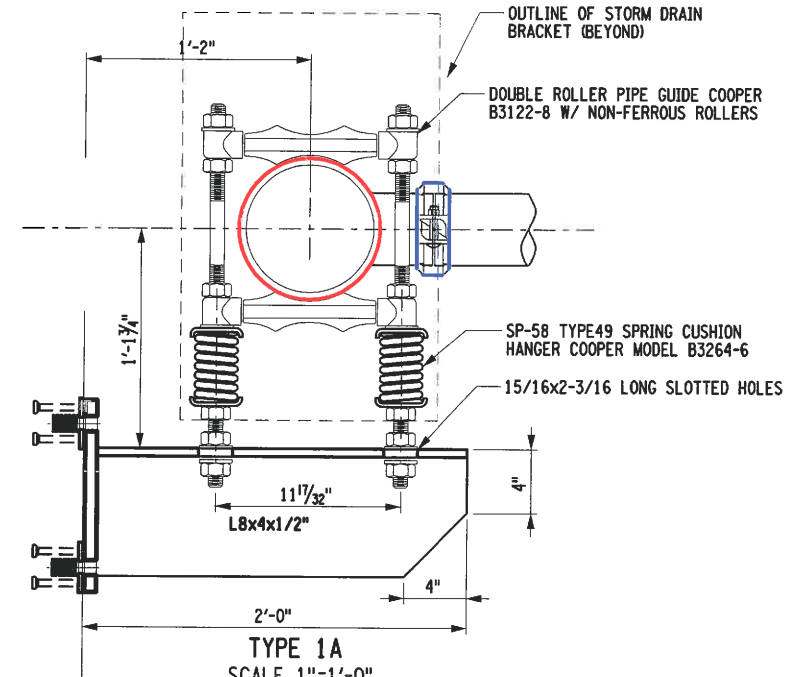
FERRULE INSERT ANCHOR PLATE
SCALE: 1-1/2"=1'-0"



TYPE 1 BRACKET PLATE
SCALE: 1-1/2"=1'-0"



TYPE 1
SCALE 1"=1'-0"



TYPE 1A
SCALE 1"=1'-0"

VIBRATION ISOLATION SUPPORTS BE USED (3) BRACKETS
EACH SIDE OF EXPANSION JOINTS

AFFIX SEAL: HARDESTY & HANOVER LLC
ON: 2/24/2017

ALTERED BY:
ON:



AS-BUILT REVISIONS
DESCRIPTION OF ALTERATIONS:

REPLACEMENT OF THE KOSCIUSKO BRIDGE OVER NEWTOWN CREEK
PHASE 2
I-278, BROOKLYN - QUEENS EXPRESSWAY
COUNTY: KINGS AND QUEENS REGION: 11

PIN X729.77

BRIDGES
1079732

CULVERTS

ALL DIMENSIONS IN FT UNLESS OTHERWISE NOTED

FIRE STANDPIPE
BRACKET DETAILS

CONTRACT NUMBER
D263452

DRAWING NO. FSP-16
SHEET NO. 493

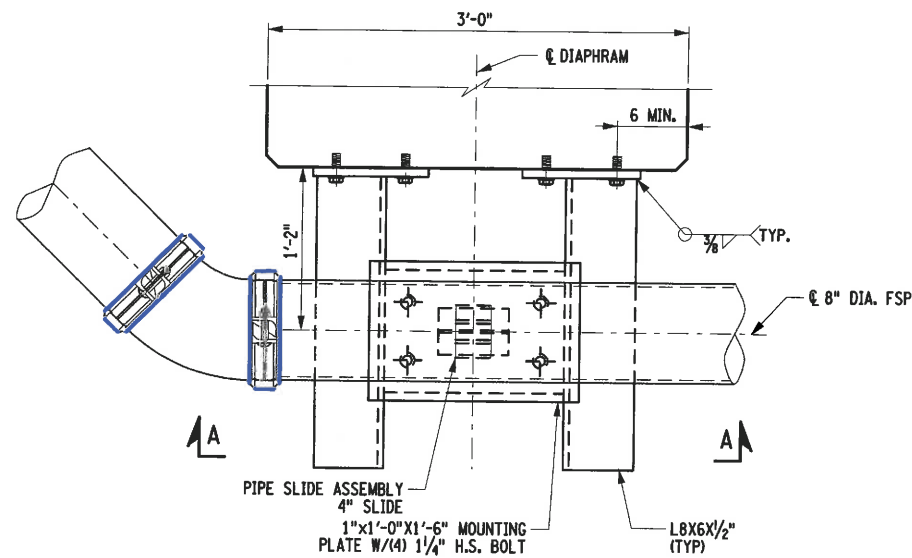
IT IS A VIOLATION OF LAW FOR ANY PERSON, UNLESS THEY ARE ACTING UNDER THE DIRECTION OF A LICENSED PROFESSIONAL ENGINEER, ARCHITECT, LANDSCAPE ARCHITECT, OR LAND SURVEYOR, TO ALTER AN ITEM IN ANY WAY. IF AN ITEM BEARING THE STAMP OF A LICENSED PROFESSIONAL IS ALTERED, THE ALTERING ENGINEER, ARCHITECT, LANDSCAPE ARCHITECT, OR LAND SURVEYOR SHALL STAMP THE DOCUMENT AND INCLUDE THE NOTATION "ALTERED BY" FOLLOWED BY THEIR SIGNATURE, THE DATE OF SUCH ALTERATION, AND A SPECIFIC DESCRIPTION OF THE ALTERATION.



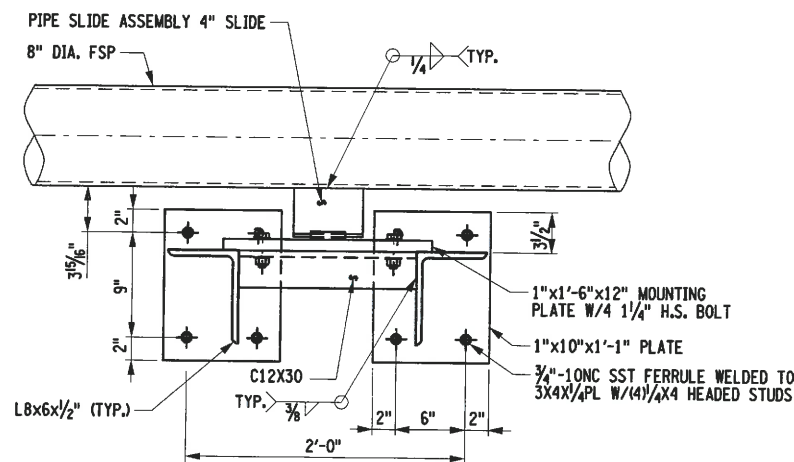
Department of
Transportation

FILE NAME = x73124_FSP-17_standpipe_bracket.dwg
DATE/TIME = 17-FEB-2017 15:35
USER = mdeputato

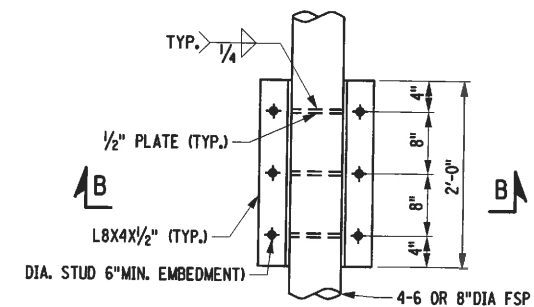
DESIGN SUPERVISOR D. WAN
JOB MANAGER M. MOHRMANN
DESIGN D. DELLE DONNE
CHECK D. DELLE DONNE
DRAFTING R. ROMAN
CHECK R. GRILLO
PROJECT MANAGER E. RECIO
D. WAN



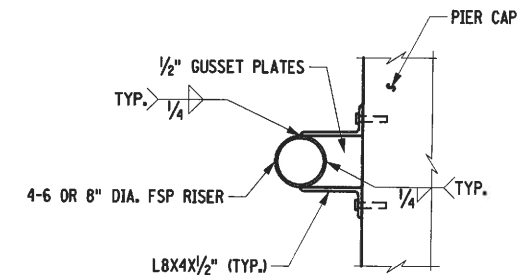
BRACKET TYPE B2
PLAN VIEW
SCALE: 3/4" = 1'-0"



BRACKET TYPE B2
SECTION A-A
SCALE: 3/4" = 1'-0"

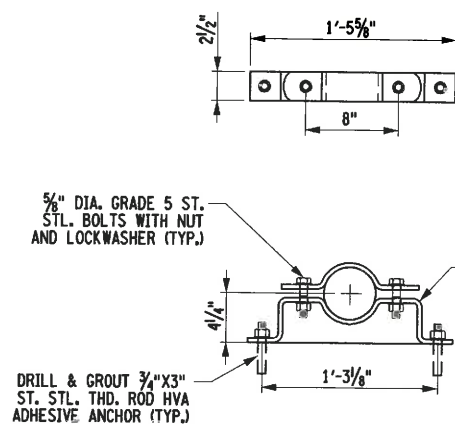


FIXED BRACKET PLATE
SCALE: 1/2" = 1'-0"

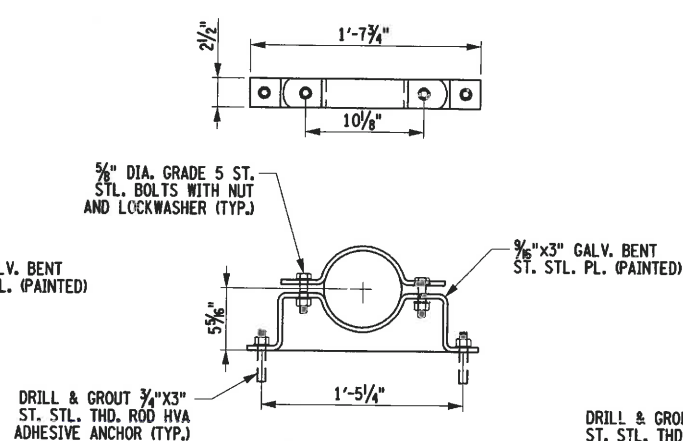


FIXED BRACKET
SECTION B-B
SCALE: 1/2" = 1'-0"

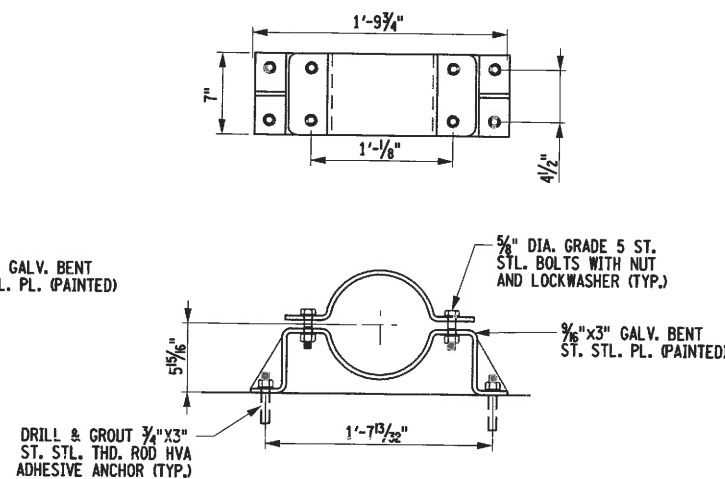
STANDPIPE BRACKET DETAIL



C1 4 INCH

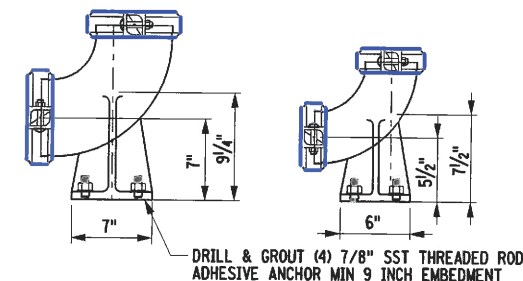


C2 6 INCH



C3 8 INCH

OFFSET WALL BRACKETS
SCALE: 3/4" = 1'-0"



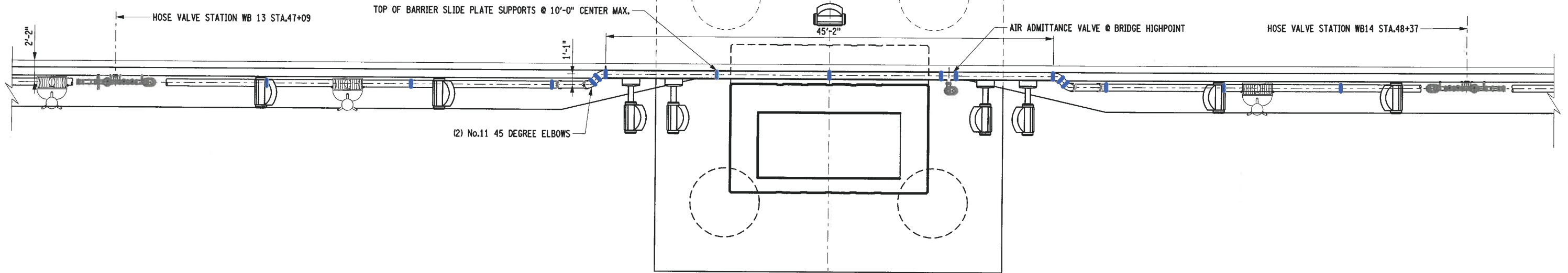
RISER SUPPORT BASES
SCALE: 3/4" = 1'-0"

AFFIX SEAL: HARDESTY & HANOVER LLC ON: 2/24/2017	ALTERED BY: ON:

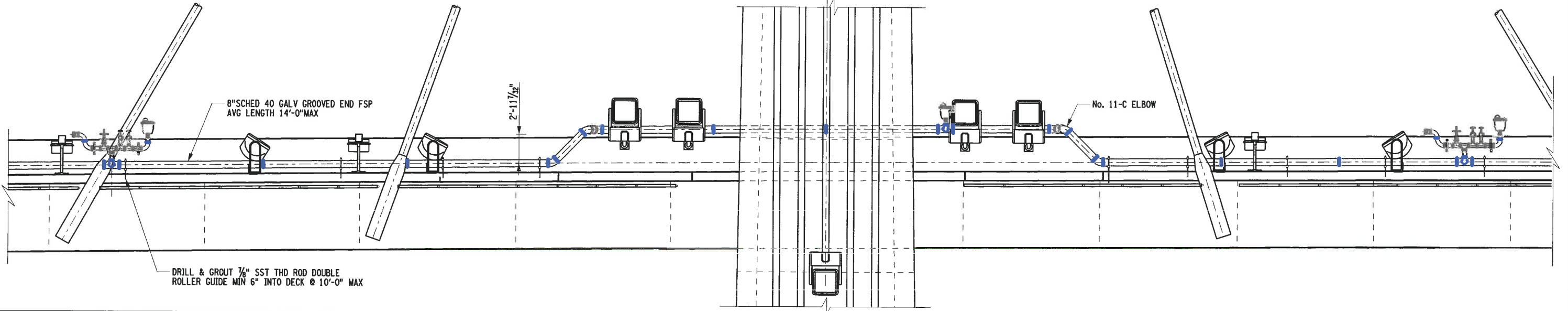
AS-BUILT REVISIONS DESCRIPTION OF ALTERATIONS:	REPLACEMENT OF THE KOSCIUSZKO BRIDGE OVER NEWTOWN CREEK	PIN X729.77	BRIDGES 1079732	CULVERTS	ALL DIMENSIONS IN FT UNLESS OTHERWISE NOTED	CONTRACT NUMBER D263452	
	PHASE 2					FIRE STANDPIPE BRACKET DETAILS 2	DRAWING NO. FSP-17 SHEET NO. 494
	I-278, BROOKLYN - QUEENS EXPRESSWAY						
	COUNTY: KINGS AND QUEENS	REGION: 11					
IT IS A VIOLATION OF LAW FOR ANY PERSON, UNLESS THEY ARE ACTING UNDER THE DIRECTION OF A LICENSED PROFESSIONAL ENGINEER, ARCHITECT, LANDSCAPE ARCHITECT, OR LAND SURVEYOR, TO ALTER AN ITEM IN ANY WAY. IF AN ITEM BEARING THE STAMP OF A LICENSED PROFESSIONAL IS ALTERED, THE ALTERING ENGINEER, ARCHITECT, LANDSCAPE ARCHITECT, OR LAND SURVEYOR SHALL STAMP THE DOCUMENT AND INCLUDE THE NOTATION "ALTERED BY" FOLLOWED BY THEIR SIGNATURE, THE DATE OF SUCH ALTERATION, AND A SPECIFIC DESCRIPTION OF THE ALTERATION.							
						Department of Transportation	

FILE NAME = x71324_FSP-18 Mainspan Transition.dgn
DATE/TIME = 17-FEB-2017 16:22
USER = mdepinto

DESIGN SUPERVISOR D. WAN
JOB MANAGER M. MOHRMANN
DESIGN D. DELLE DONNE
CHECK D. DELLE DONNE
CHECK R. ROMAN
DRAFTING R. GRILLO
CHECK E. RECIO
PROJECT MANAGER D. WAN



PART PLAN SOUTH FASCIA PYLON
SCALE: $\frac{3}{32}" = 1'-0"$



MAIN SPAN FIRE STANDPIPE TRANSITION
SCALE: $\frac{3}{32}" = 1'-0"$

AFFIX SEAL: HARDESTY & HANOVER LLC
ON: 2/24/2017

ALTERED BY:
ON:



AS-BUILT REVISIONS
DESCRIPTION OF ALTERATIONS:

REPLACEMENT OF THE KOSCIUSZKO BRIDGE OVER NEWTOWN CREEK
PHASE 2
I-278, BROOKLYN - QUEENS EXPRESSWAY
COUNTY: KINGS AND QUEENS REGION: 11

PIN X729.77

BRIDGES
1079732

CULVERTS

ALL DIMENSIONS IN FT UNLESS OTHERWISE NOTED

CONTRACT NUMBER
D263452

FIRE STANDPIPE
MAINSPAN PYLON TRANSITIONS

DRAWING NO. FSP-18
SHEET NO. 495

IT IS A VIOLATION OF LAW FOR ANY PERSON, UNLESS THEY ARE ACTING UNDER THE DIRECTION OF A LICENSED PROFESSIONAL ENGINEER, ARCHITECT, LANDSCAPE ARCHITECT, OR LAND SURVEYOR, TO ALTER AN ITEM IN ANY WAY. IF AN ITEM BEARING THE STAMP OF A LICENSED PROFESSIONAL IS ALTERED, THE ALTERING ENGINEER, ARCHITECT, LANDSCAPE ARCHITECT, OR LAND SURVEYOR SHALL STAMP THE DOCUMENT AND INCLUDE THE NOTATION "ALTERED BY" FOLLOWED BY THEIR SIGNATURE, THE DATE OF SUCH ALTERATION, AND A SPECIFIC DESCRIPTION OF THE ALTERATION.



Department of
Transportation