

supporting beam

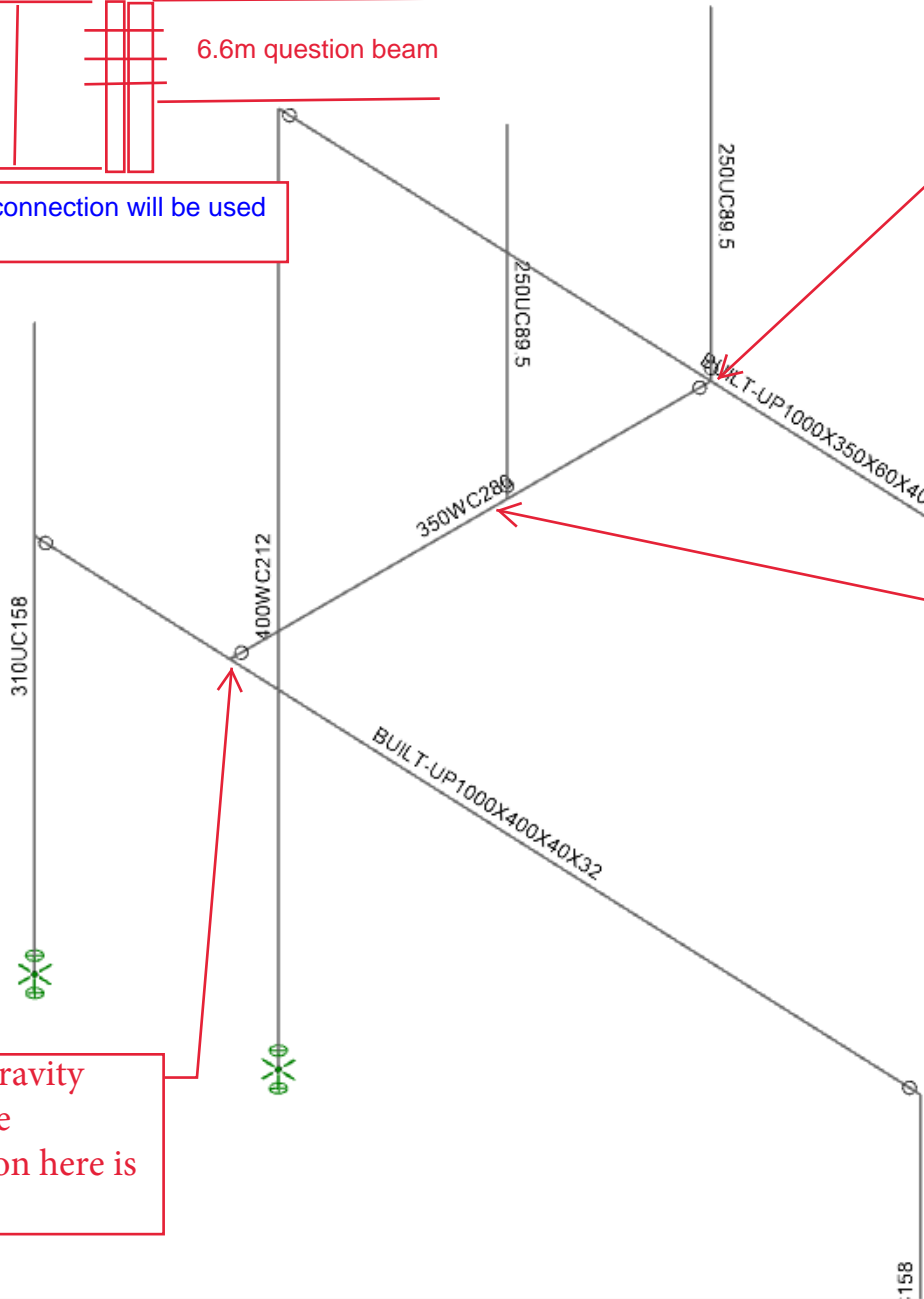
6.6m question beam

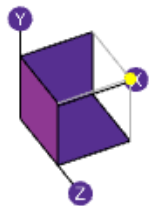
the moment connection will be used
if necessary

under gravity load the deflection
here is -34mm, I plan to use
moment connection as there is
cantilever platform on opposite
side which i took off , shear
connection is still ok as the
supporting beam is very huge. any
suggestion to use moment
connection or shear connection
here ?

this is the 6.6m
beam under
discussion, under
gravity load, the
deflection here is
-37mm

under gravity
load, the
deflection here is
-5mm.





note: I doubled the beam length to 13.2m, add 20mm deflection "load", for different beam end restrain, seems the shear load is almost same.

