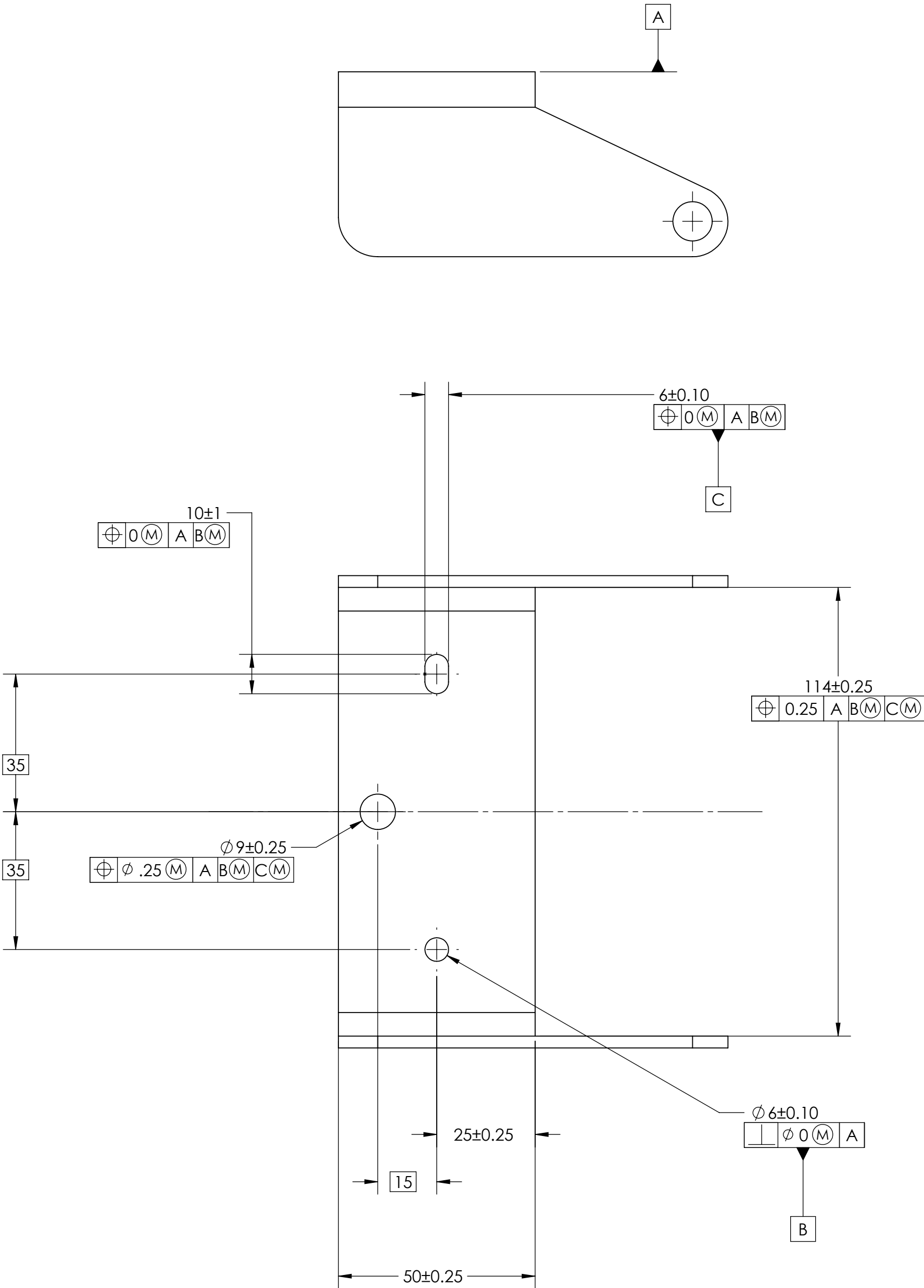
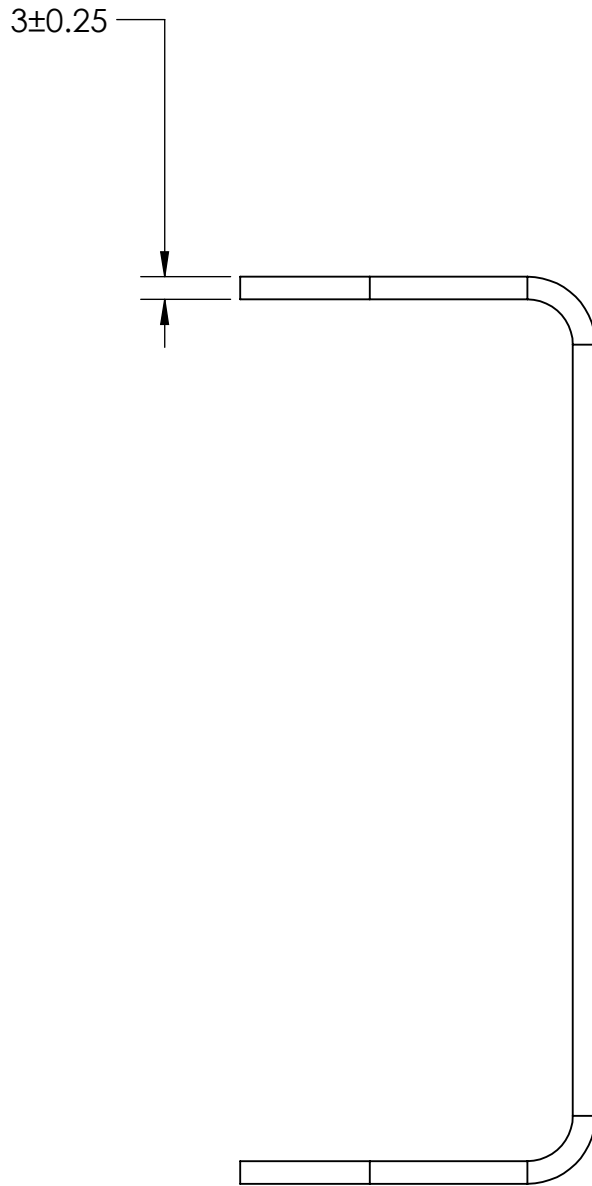
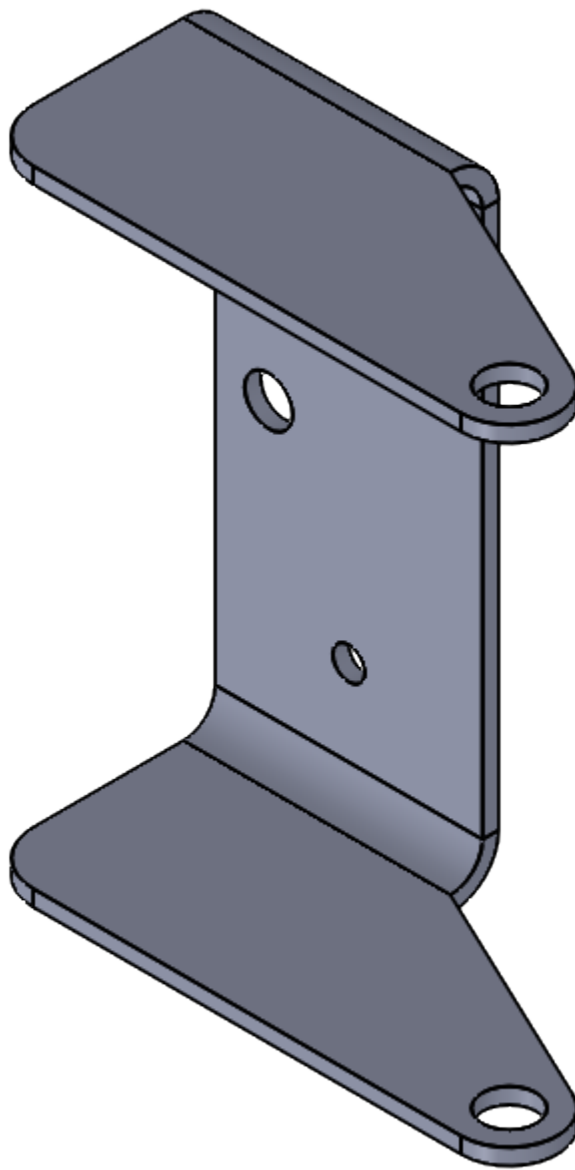


REVISIONS			
REV	DESCRIPTION	BY	DATE
0	RFQ	AXN   RXN	xx/xx/xx



- NOTES:
- Mat'l: Material <not specified>.
  - Finish: N/A
  - Mass: 36.809 g
  - DRAWING FOR INSPECTION ONLY. REFERENCE 3D DATA FOR ALL TOOLING.
  - ALL CAD DATA IS BASIC UNLESS OTHERWISE SPECIFIED.

PROPRIETARY AND CONFIDENTIAL  
THE INFORMATION CONTAINED IN THIS  
DRAWING IS THE SOLE PROPERTY OF  
SLT, LLC. ANY  
REPRODUCTION IN PART OR AS A WHOLE  
WITHOUT THE WRITTEN PERMISSION OF  
BRUNSWICK CORP IS PROHIBITED.

UNLESS OTHERWISE SPECIFIED: DIMENSIONS ARE IN MM TOLERANCES: FRACTIONAL $\pm$ ANGULAR: MACH $\pm 0.5$ BEND $\pm 1.0$ NO DECIMAL $\pm 1.0$ ONE PLACE DECIMAL $\pm .5$ TWO PLACE DECIMAL $\pm .05$	
INTERPRET GEOMETRIC TOLERANCING PER: ASME Y14.5 - 2009	
MATERIAL	SEE NOTES
FINISH	SEE NOTES
DO NOT SCALE DRAWING	

TITLE:  Part Desc.			
SIZE <b>C</b>	DWG. NO. temp part 1	REV <b>0</b>	
SCALE: 1:1	WEIGHT: 36.809	SHEET 1 OF 1	