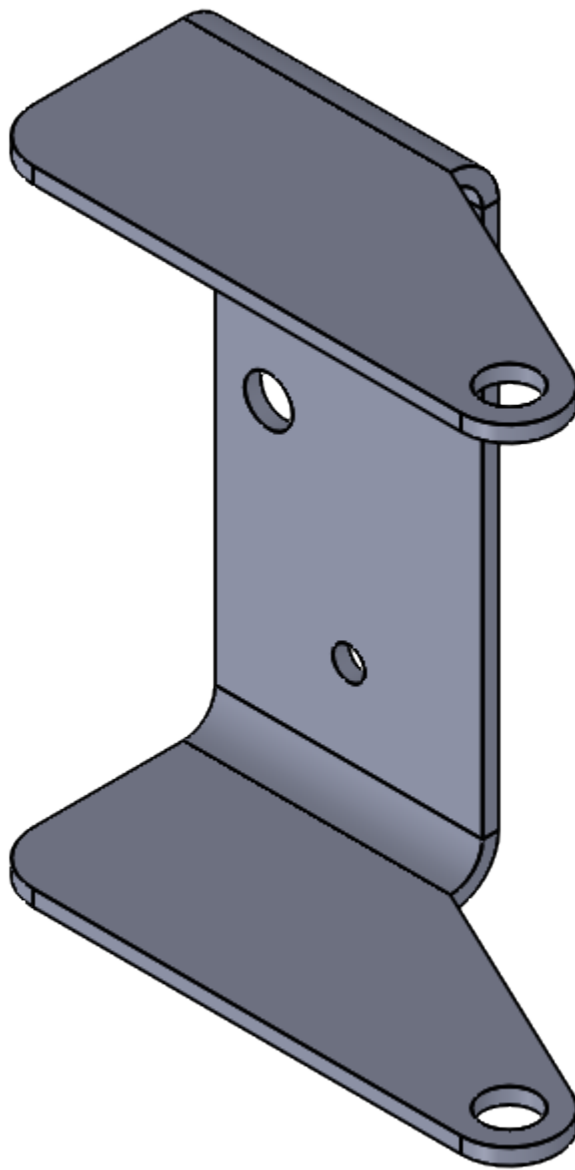


REVISIONS			
REV	DESCRIPTION	BY	DATE
0	RFQ	AXN   RXN	xx/xx/xx



- NOTES:
- Mat'l: Material <not specified>.
  - Finish: N/A
  - Mass: 36.809 g
  - DRAWING FOR INSPECTION ONLY. REFERENCE 3D DATA FOR ALL TOOLING.
  - ALL CAD DATA IS BASIC UNLESS OTHERWISE SPECIFIED.

PROPRIETARY AND CONFIDENTIAL  
THE INFORMATION CONTAINED IN THIS  
DRAWING IS THE SOLE PROPERTY OF  
SLT, LLC. ANY  
REPRODUCTION IN PART OR AS A WHOLE  
WITHOUT THE WRITTEN PERMISSION OF  
BRUNSWICK CORP IS PROHIBITED.

UNLESS OTHERWISE SPECIFIED:  
DIMENSIONS ARE IN MM  
TOLERANCES:  
FRACTIONAL ±  
ANGULAR: MACH±0.5 BEND ±1.0  
NO DECIMAL ±1.0  
ONE PLACE DECIMAL ±.5  
TWO PLACE DECIMAL ±.05

INTERPRET GEOMETRIC  
TOLERANCING PER: ASME Y14.5 -2009

MATERIAL SEE NOTES

FINISH SEE NOTES

DO NOT SCALE DRAWING

TITLE:  
  
Part Desc.

SIZE <b>C</b>	DWG. NO. temp part 1	REV <b>0</b>
------------------	-------------------------	-----------------

SCALE: 1:1	WEIGHT: 36.809	SHEET 1 OF 1
------------	----------------	--------------