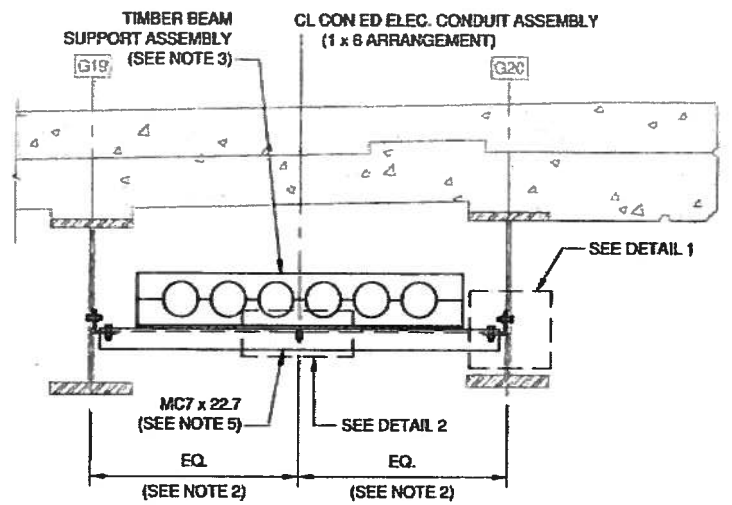
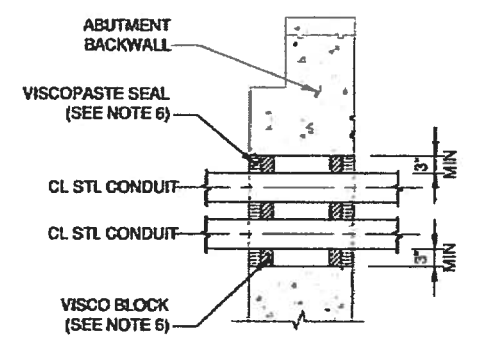


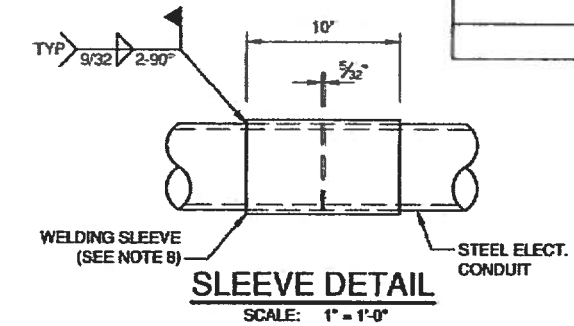
**CON EDISON CABLE CONDUITS
BETWEEN G5 AND G6**
(VIEW LOOKING EAST)
SECTION
SCALE: 3/8" = 1'-0"



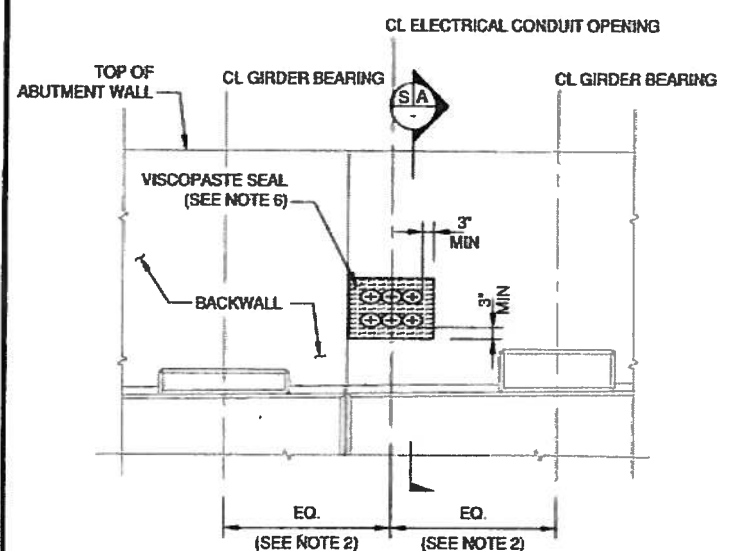
**CON EDISON CABLE CONDUITS
BETWEEN G19 AND G20**
(VIEW LOOKING EAST)
SECTION
SCALE: 3/8" = 1'-0"



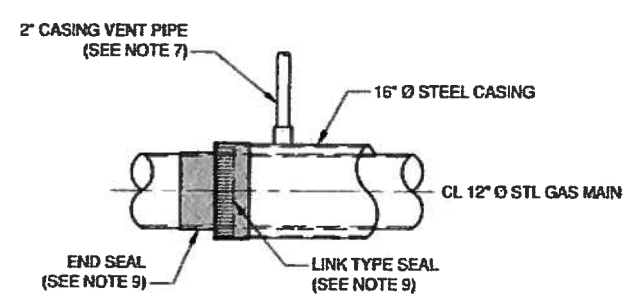
**ELECTRICAL CONDUIT
ABUTMENT WALL PENETRATION**
SECTION
SCALE: 3/8" = 1'-0"



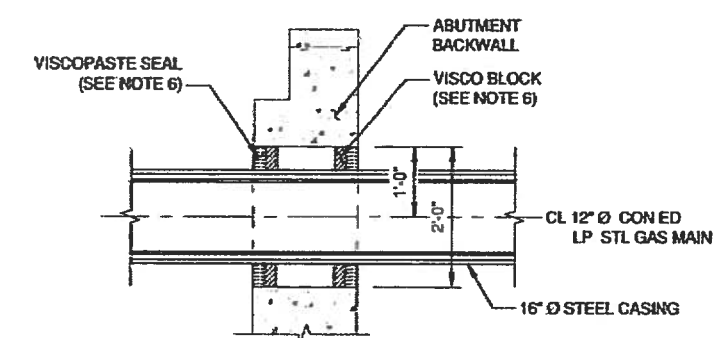
- NOTES:**
- FOR GENERAL NOTES SEE DWG. CE-006A.
 - FOR GIRDER SPACING SEE STRUCTURAL DRAWINGS.
 - INSTALL 6 NEW 5/8" STEEL CONDUITS IN 2 x 3 AND 1 x 6 ARRANGEMENTS INCLUDING BEAM SUPPORTS ASSEMBLY BETWEEN G5 - G6 AND G19 - G20 AS SHOWN ON DRAWING CE-006A AND IN ACCORDANCE WITH CON EDISON SPECIFICATION EO-9217-C.
 - INSTALL EXPANSION SLEEVES AT EACH BACKWALL LOCATION IN ACCORDANCE WITH CON EDISON SPECIFICATION EO-12171-D.
 - SUPPORT BEAM SHALL BE INSTALLED HORIZONTALLY WITH A DISTANCE OF 8 7/8" FROM TOP OF G6 BOTTOM FLANGE AND 8 1/8" FROM TOP OF G19 BOTTOM FLANGE. CONTRACTOR TO COORDINATE WITH DIAPHRAGM LOCATIONS.
 - FOR VISCO SEAL PRODUCT SPECIFICATIONS SEE VISCOTAQ - AMCORR PRODUCTS & SERVICES.
 - SEE CON EDISON SPECIFICATION EO-17109C FOR VENTING INSTALLATION DETAILS.
 - FOR DETAILS SEE CON EDISON SPECIFICATIONS EO-6947-D. INSIDE EDGE OF CABLE CONDUIT SHALL BE FREE FROM SHARP EDGES OR BURRS PRIOR TO SLEEVE INSTALLATION.
 - FOR DETAILS SEE CON EDISON SPECIFICATION G-100, 237-7 AND G-8096.



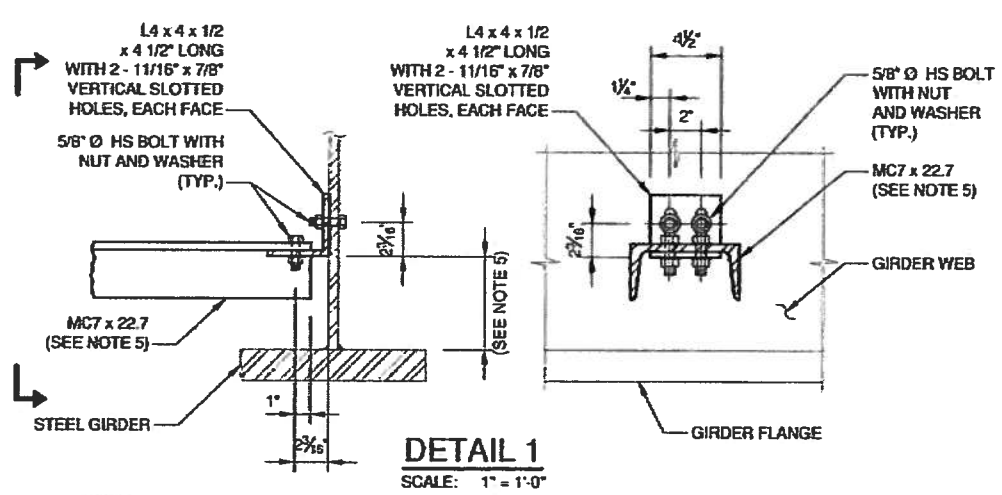
**TYPICAL ABUTMENT WALL PENETRATION
ELEVATION**
SCALE: 1/4" = 1'-0"



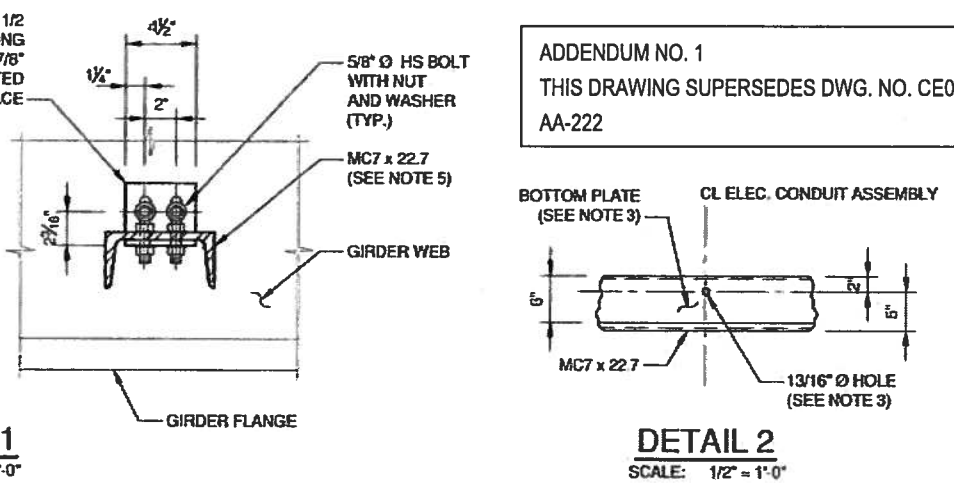
GAS MAIN VENT PIPE DETAIL
SCALE: 3/8" = 1'-0"



**GAS MAIN
ABUTMENT WALL PENETRATION**
SECTION
SCALE: 3/8" = 1'-0"

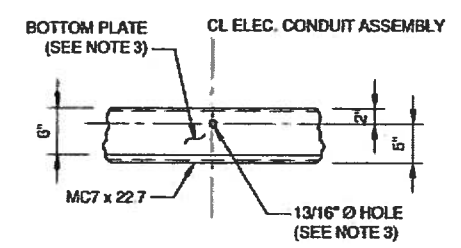


DETAIL 1
SCALE: 1" = 1'-0"



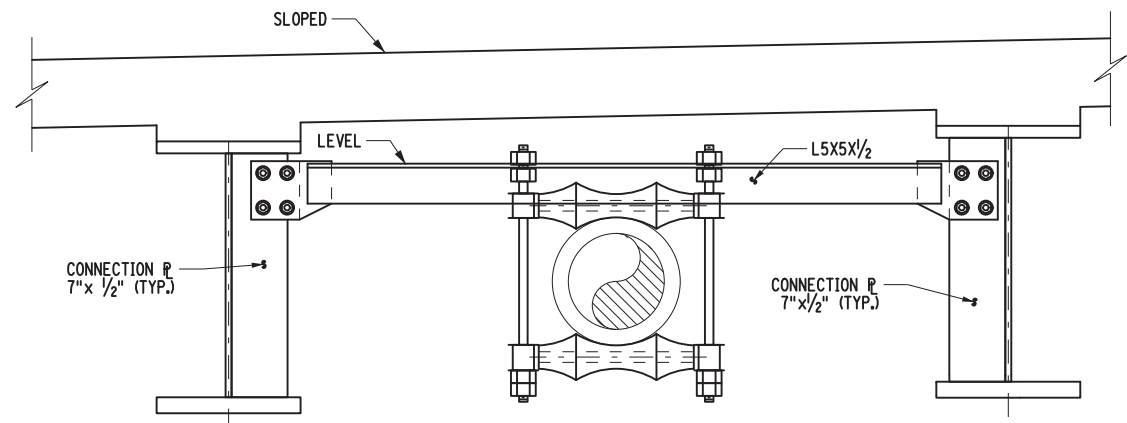
DETAIL 2
SCALE: 1/2" = 1'-0"

ADDENDUM NO. 1
THIS DRAWING SUPERSEDES DWG. NO. CE008
AA-222

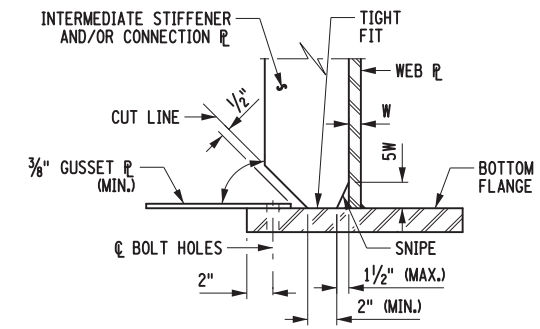


ALTERED BY:

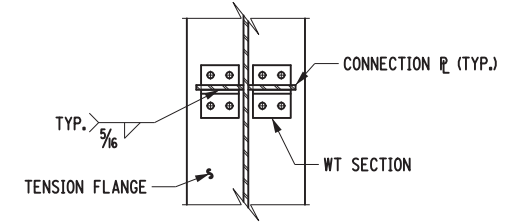
IT IS A VIOLATION OF LAW FOR ANY PERSON, UNLESS THEY ARE ACTING UNDER THE DIRECTION OF A LICENSED PROFESSIONAL ENGINEER, ARCHITECT, LANDSCAPE ARCHITECT, OR LAND SURVEYOR, TO ALTER AN ITEM IN ANY WAY. IF AN ITEM BEARING THE STAMP OF A LICENSED PROFESSIONAL IS ALTERED, THE ALTERED, THE ALTERING ENGINEER, ARCHITECT, LANDSCAPE ARCHITECT, OR LAND SURVEYOR SHALL STAMP THE DOCUMENT AND INCLUDE THE NOTATION "ALTERED BY" FOLLOWED BY THEIR SIGNATURE, THE DATE OF SUCH ALTERATION, AND A SPECIFIC DESCRIPTION OF THE ALTERATION.



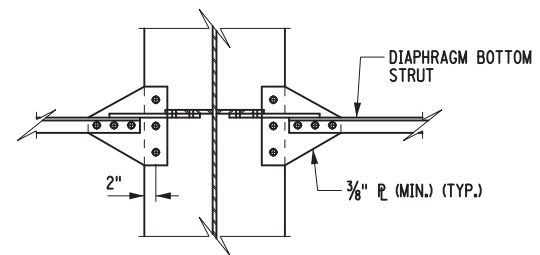
UTILITY SUPPORT DIAPHRAGM - TYPE U1
(WATER LINE SHOWN, GAS LINE AND TELEPHONE SIMILAR)



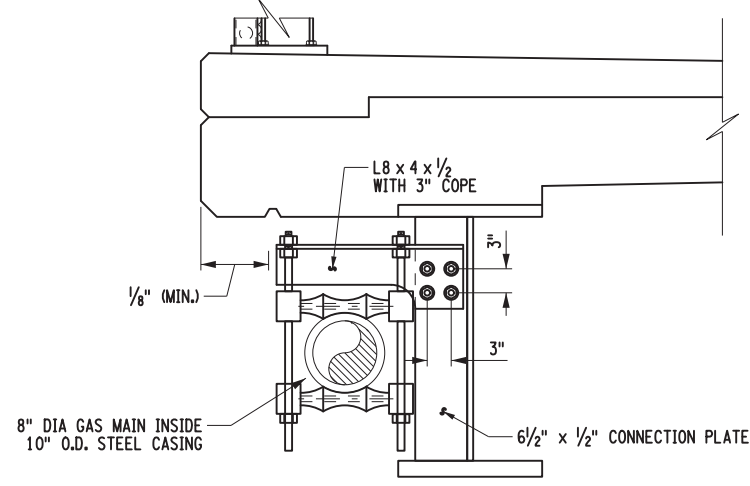
CLIPPING DETAIL FOR INTERMEDIATE STIFFENER
AND GUSSET PLATE



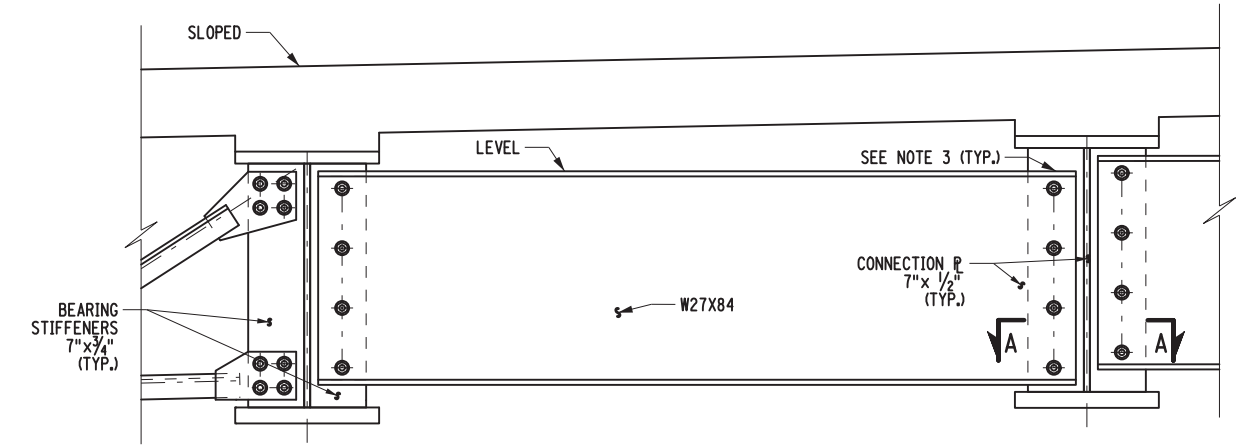
SECTION A-A



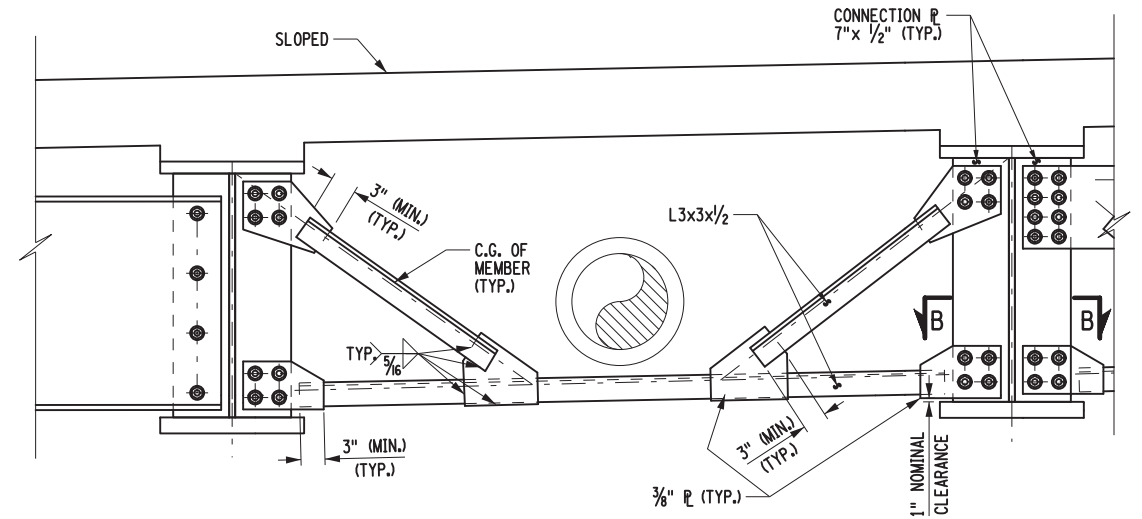
SECTION B-B



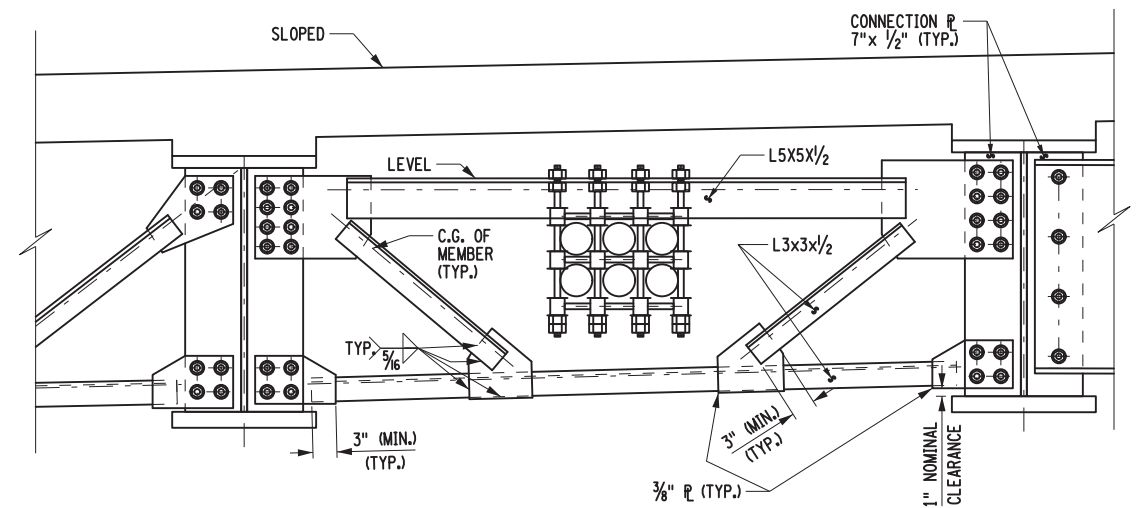
UTILITY SUPPORT DIAPHRAGM - TYPE U2



DIAPHRAGM - TYPE D1



DIAPHRAGM - TYPE D2



DIAPHRAGM - TYPE D3

- NOTES:
1. CONNECTIONS SHALL BE MADE ACCORDING TO THE NEW YORK STATE STEEL CONSTRUCTION MANUAL.
 2. UNLESS OTHERWISE INDICATED, BOLTED CONNECTIONS SHALL BE MADE WITH 7/8" DIA. A325 HIGH STRENGTH BOLTS.
 3. DIAPHRAGM MEMBERS SHALL BE BLOCKED AS SHOWN, WITH THEIR FLANGE CUT BACK ON ONE SIDE, AND CHIPPED OR GROUND FLUSH, IN LIEU OF BLOCKING THE DIAPHRAGM MEMBER THE FABRICATOR SHALL HAVE THE OPTION OF COPING THE FLANGE.
 4. THE CONTRACTOR MAY PLACE DIAPHRAGMS ON EITHER SIDE OF THE BEARING STIFFENERS OR CONNECTION PLATES AS NECESSARY TO CORRECT ALIGNMENT PROVIDED THERE WILL BE NO INTERFERENCE WITH OTHER STRUCTURAL DETAILS.
 5. TAPERED OR FLAT SHIM PLATES MAY BE USED IN THE CONNECTION BETWEEN SKEWED DIAPHRAGMS AND THE BEARING STIFFENERS, STIFFENER CONNECTION PLATES OR GUSSET PLATES. VARIABLE THICKNESSES OF SHIM PLATES MAY BE USED. THE MINIMUM THICKNESS OF SHIM PLATE SHALL BE 1/8" WITH A MAXIMUM NUMBER OF THREE SHIM PLATES PERMITTED AT ANY CONNECTION. THE TOTAL THICKNESS OF ALL SHIM PLATES USED AT ANY CONNECTION SHALL NOT EXCEED 1". SHIM PLATES SHALL HAVE THE DIMENSIONS OF THE FAYING SURFACE. THE SHIM MATERIAL SHALL CONFORM TO ASTM DESIGNATION A588 FOR WEATHERING STEEL APPLICATIONS. NO ADDITIONAL PAYMENT WILL BE MADE FOR FURNISHING AND PLACING THE SHIM PLATES.
 6. IN ORDER TO MAXIMIZE THE DISTANCE BETWEEN THE OUTSTANDING LEG OF THE TOP STRUT AND THE BOTTOM OF THE STRUCTURAL SLAB, THIS STRUT SHALL BE ORIENTED AS SHOWN. IN ADDITION, THE POSITION OF THIS STRUT SHALL BE LOWERED TO THE EXTENT THAT IT DOES NOT INTERFERE WITH THE ALIGNMENT OF THE DIAGONALS SHOWN AND MAINTAINS 2 INCHES OF CLEARANCE FROM THE UTILITY.

AFFIX SEAL: ON:	ALTERED BY: ON:

AS-BUILT REVISIONS
DESCRIPTION OF ALTERATIONS:

IT IS A VIOLATION OF LAW FOR ANY PERSON, UNLESS THEY ARE ACTING TO ALTER AN ITEM IN ANY WAY, IF AN ITEM BEARING THE STAMP OF A I SHALL STAMP THE DOCUMENT AND INCLUDE THE NOTATION "ALTERED BY"