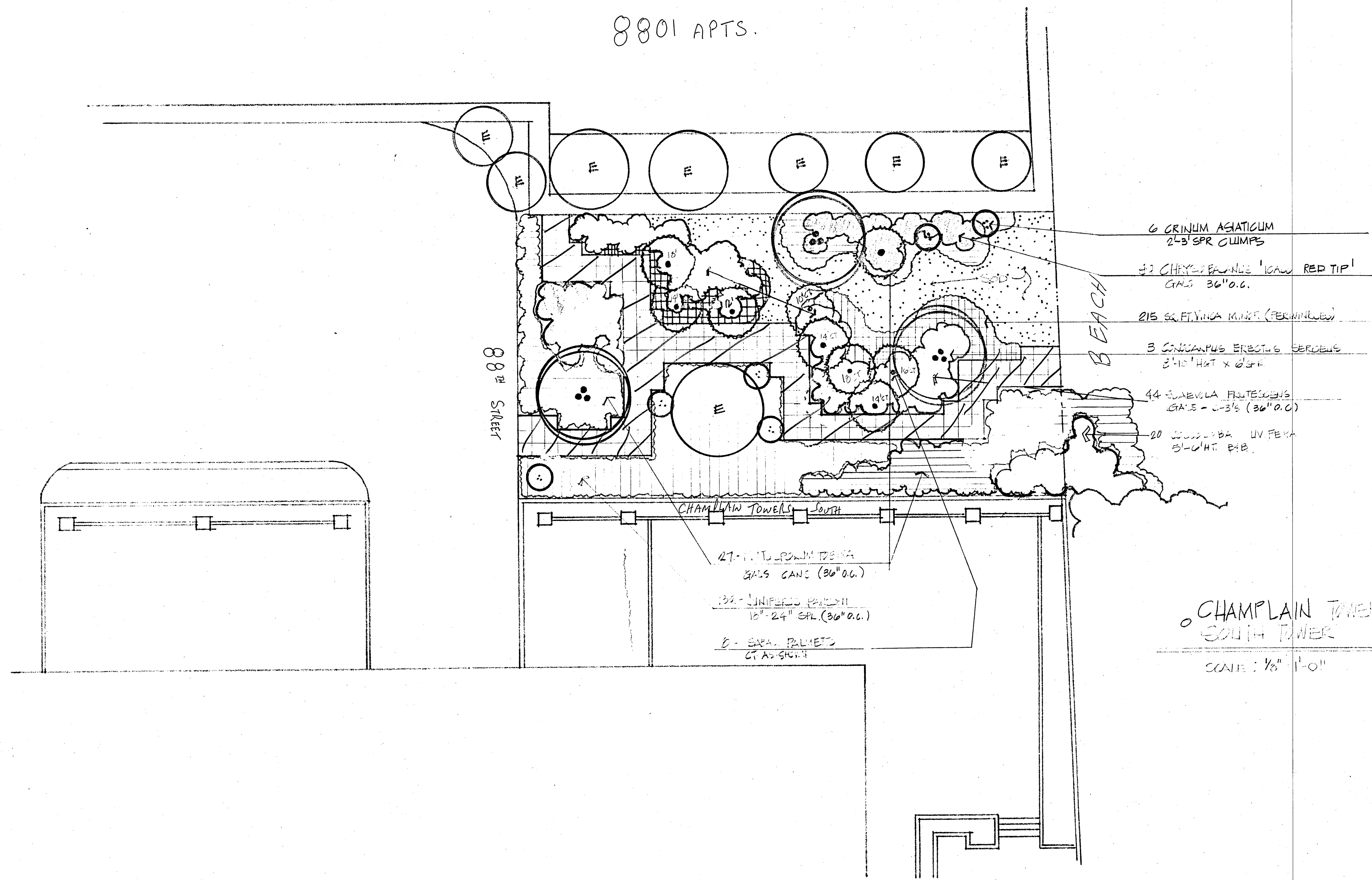
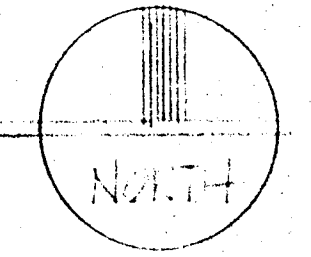


8801 APTS.



CHAMPLAIN TOWER, FOCKETT PARK
SOUTH TOWER

SCALE: 1/8" = 1'-0"



TOWN OF SURFSIDE

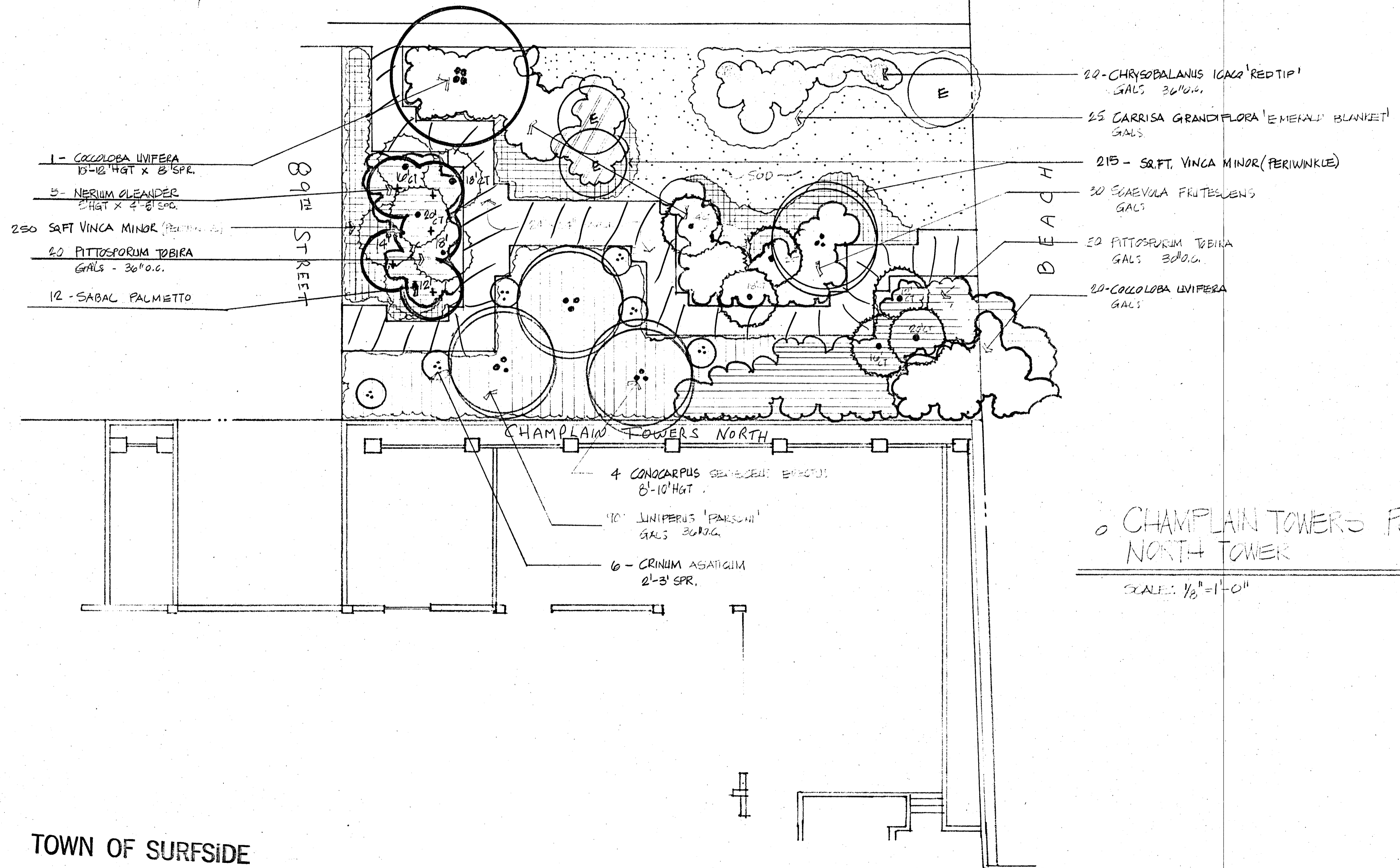
- Approved
- Approved as noted
- Disapproved

[Signature]
Inspector
8/24/81

[Signature]
TOWN ENGINEER
8-25-81

Reviewed: *[Signature]* Date: 8/24/81
Planning & Zoning Board
[Signature]

CONTINENTAL TERRACE



CHAMPLAIN TOWERS PROCKETT PARK
NORTH TOWER

SCALE: 1/8" = 1'-0"

TOWN OF SURFSIDE

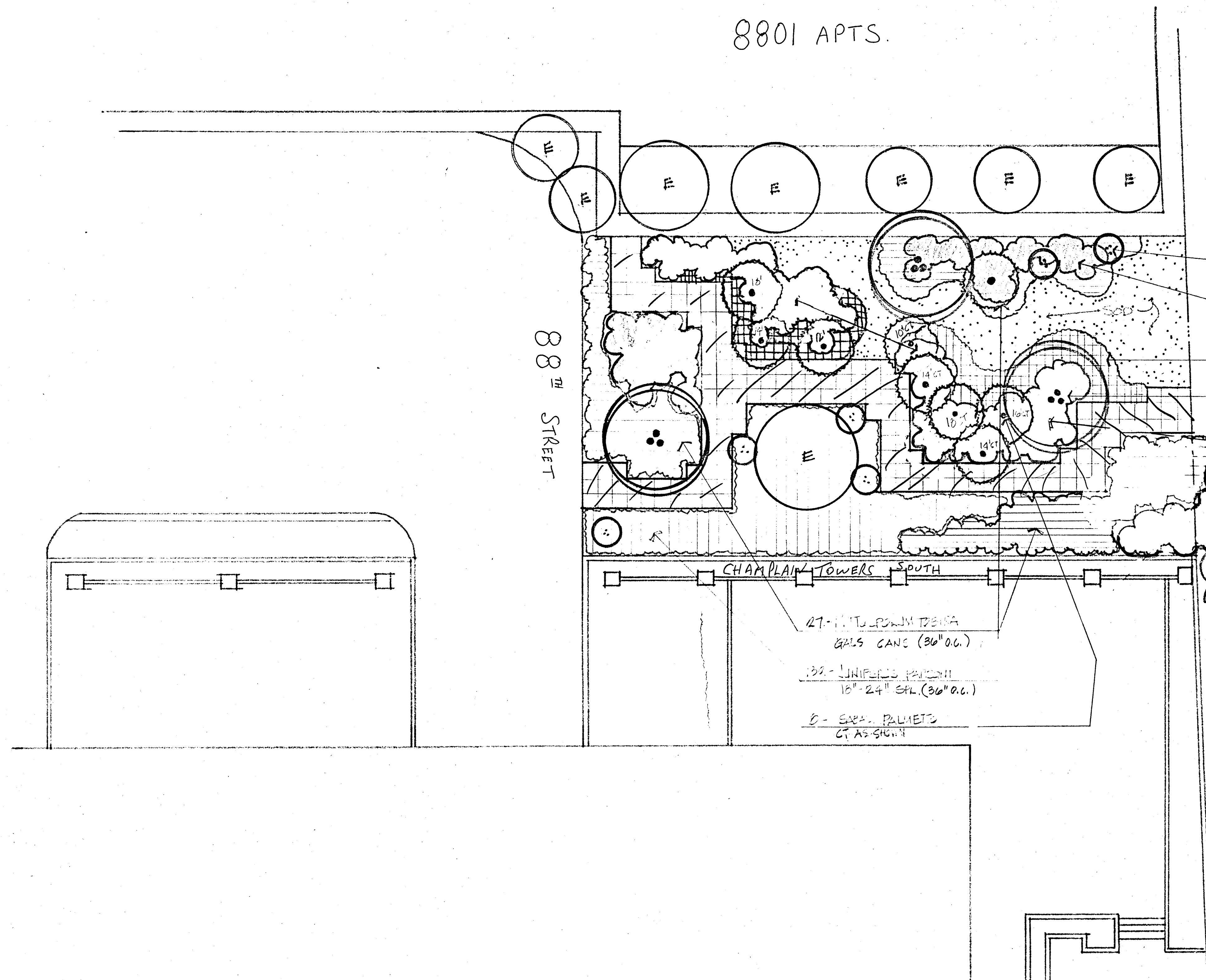
- Approved
- Approved as noted
- Disapproved

[Signature] 8/24/81
Inspector

[Signature]
8-25-81

Reviewed by: _____ Date: _____
Planning & Zoning Board

8801 APTS.



TOWN OF SURFSIDE

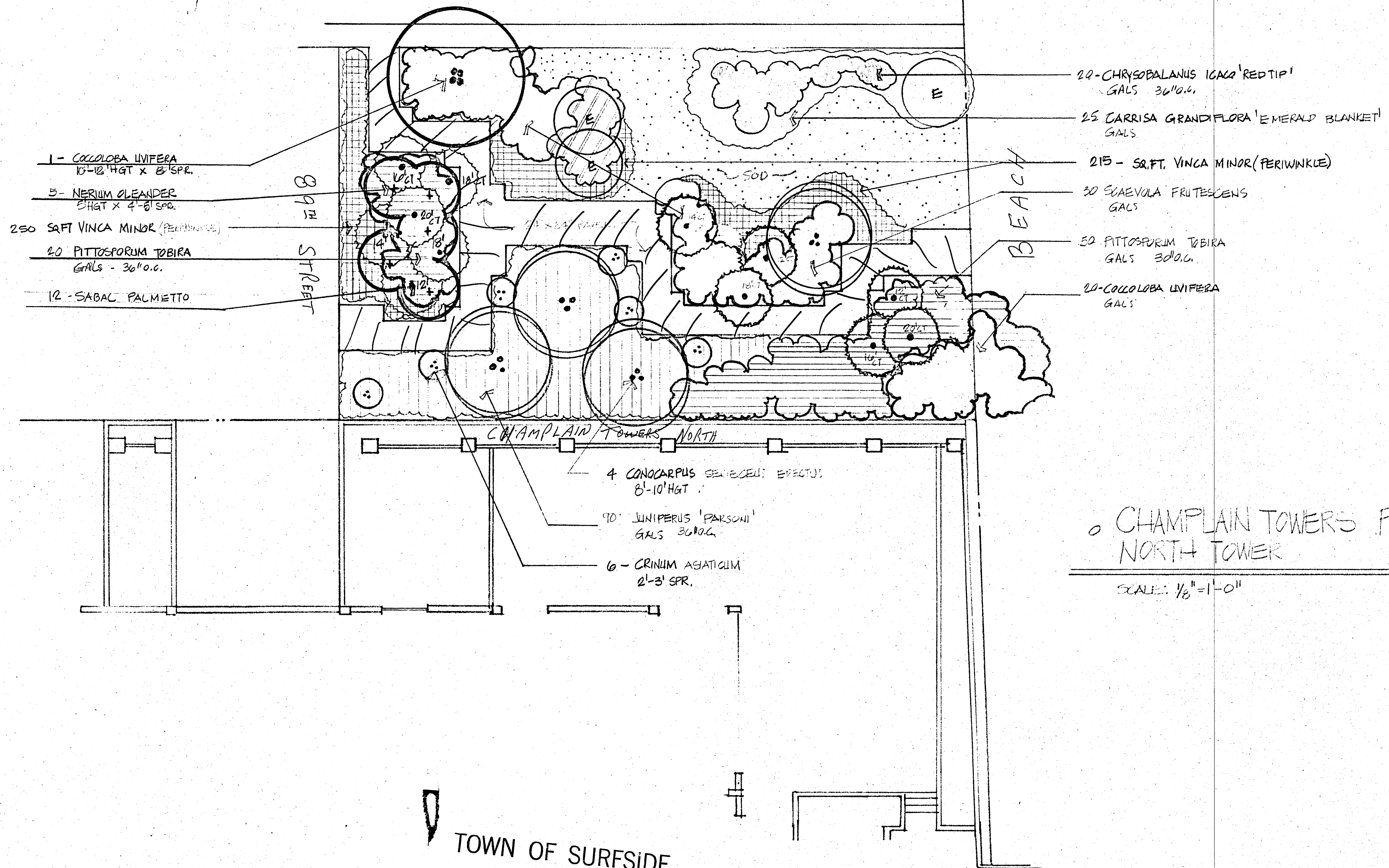
- Approved
- Approved as noted
- Disapproved

[Signature] 8/27/81
Inspector

TOWN ENGINEER
[Signature]
8-25-81

Reviewed: *[Signature]* Approved Conditionally Date: 8/27/81
Planning & Zoning Board
[Signature]

CONTINENTAL TERRACE



- 1 - COCCOLOBA UVIFERA
13'-12" HGT X 8' SPR.
- 5 - NERIUM OLEANDER
8' HGT X 4' SPR.
- 250 - SOFT VINCA MINOR (PERIWINKLE)
GALS - 36" O.G.
- 20 - PITTOSPORUM TOBIRA
GALS - 36" O.G.
- 12 - SABAL PALMETTO

- 20 - CHRYSOBALANUS ICACO 'RED TIP'
GALS - 36" O.G.
- 25 - LARRISA GRANDIFLORA 'EMERALD BLANKET'
GALS
- 215 - SOFT VINCA MINOR (PERIWINKLE)
- 30 - SCAEVOLA FRUTESCENS
GALS
- 50 - PITTOSPORUM TOBIRA
GALS - 36" O.G.
- 20 - COCCOLOBA UVIFERA
GALS

- 4 - CONOCARPUS SERICEUS 'EFFECTUS'
8'-10' HGT.
- 90 - JUNIPERUS 'PARSONII'
GALS - 36" O.G.
- 6 - CRINUM ASIATICUM
2'-3' SPR.

CHAMPLAIN TOWERS FROCKETT PARK
NORTH TOWER
SCALE: 1/8" = 1'-0"

TOWN OF SURFSIDE

- Approved
- Approved as noted
- Disapproved

Inspector *[Signature]* 8/24/81

[Signature]
8-25-81

Reviewed: _____ Date: _____
Planning & Zoning Board