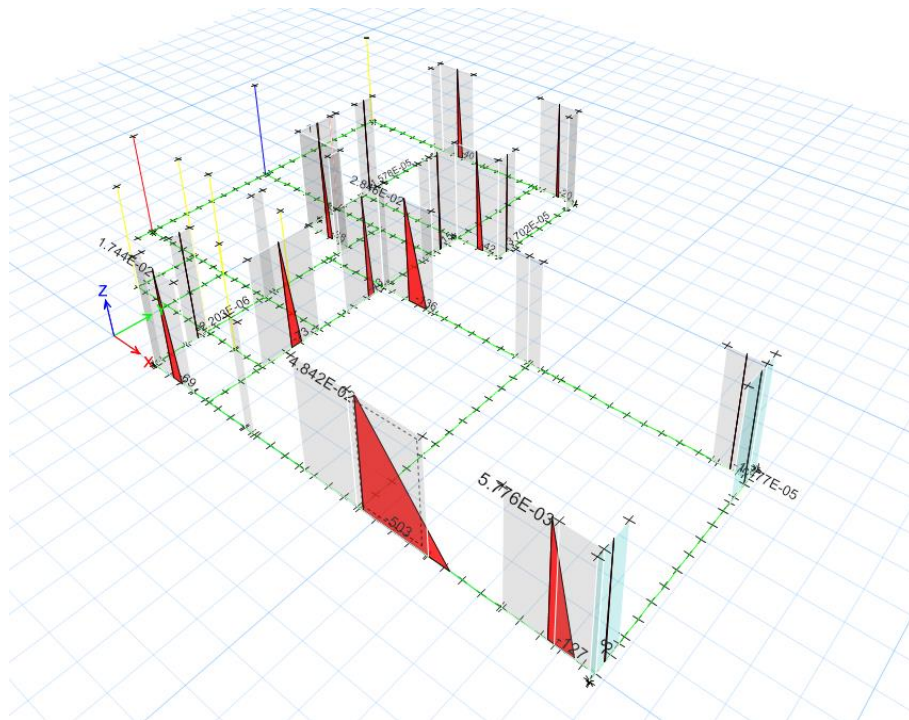
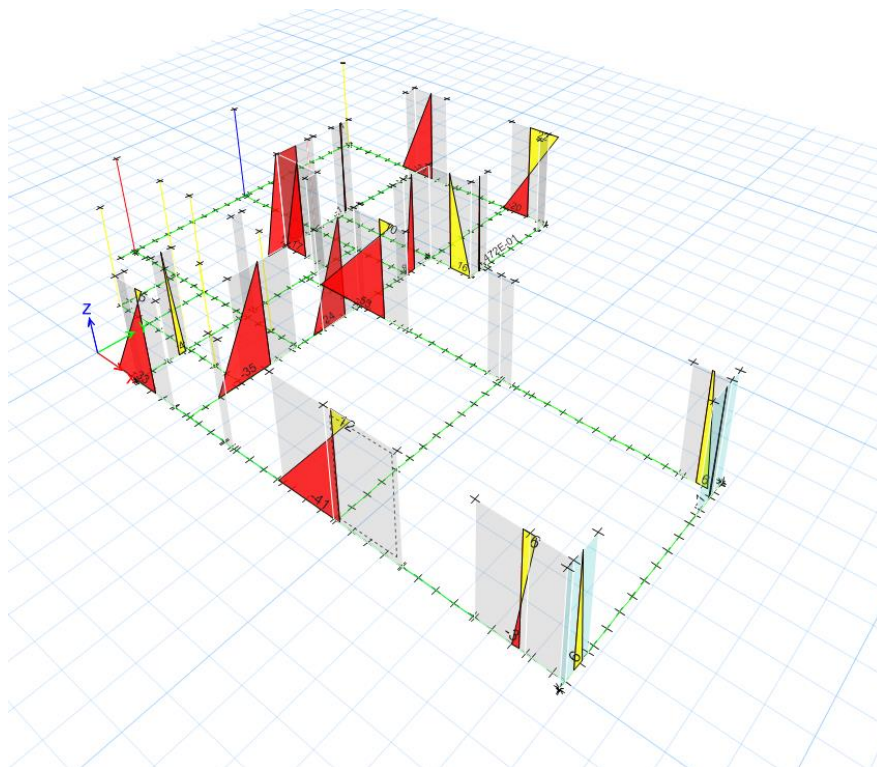


Problem Solved. Model had instability issues due to me trying to release the tops of the walls. Page 1 is outputted results with errors. Page 2 is outputs with no errors. Note the forces increase on most walls, so definitely something you need to resolve before looking at the results. Even the signs are different.

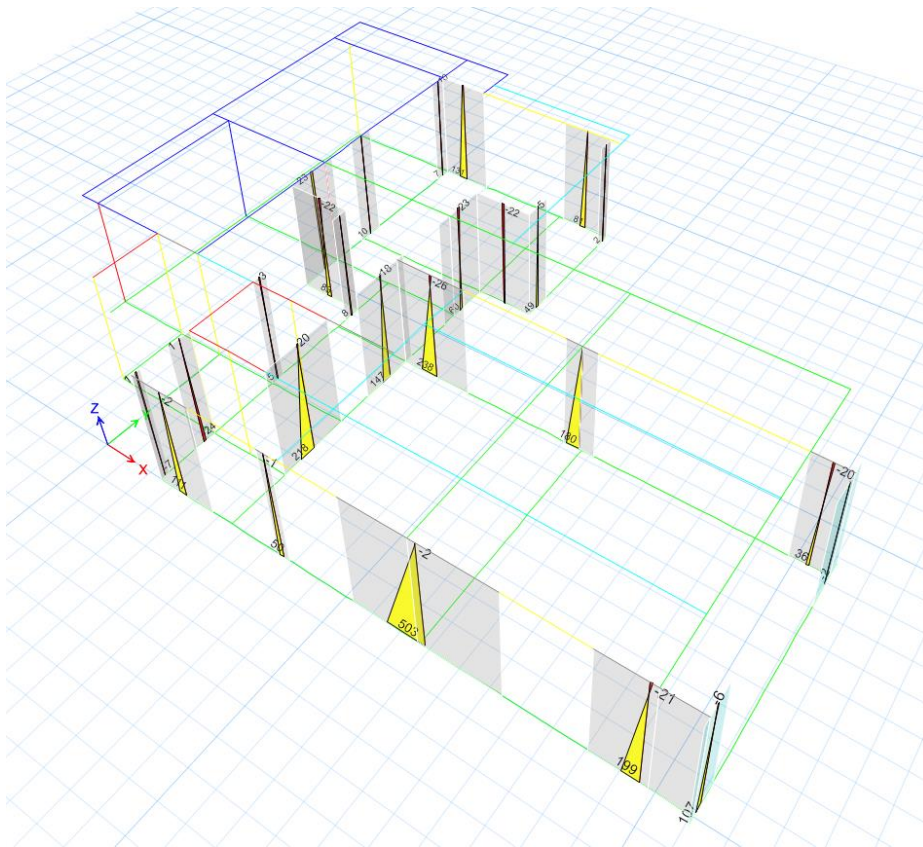


Moment 3-3 Diagram. Wall heights 3.4m. For example wall with 503kNm at base would expect shear force =  $503/3.4 = 148\text{kN}$ . However it is 3 times less -12kN to 41kN

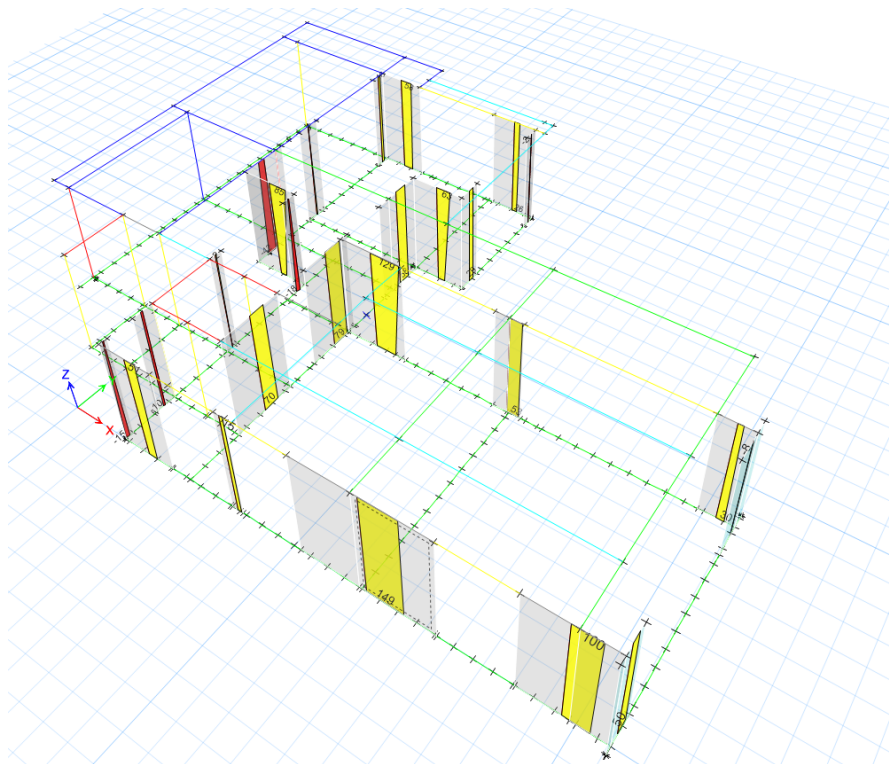


Shear force 2-2 diagram

Page 2: Correct results – much better!



Moment 3-3 Diagram



Shear force 2-2 diagram