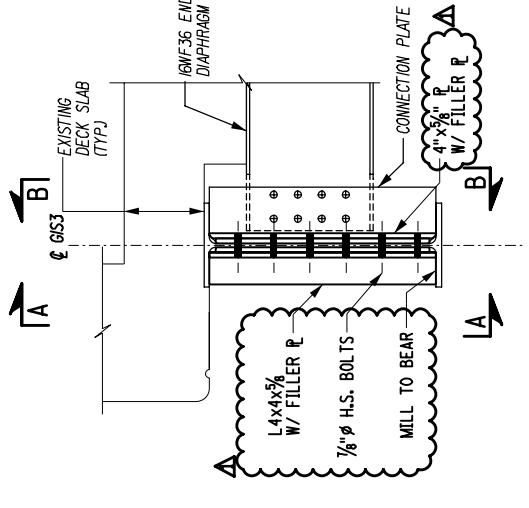
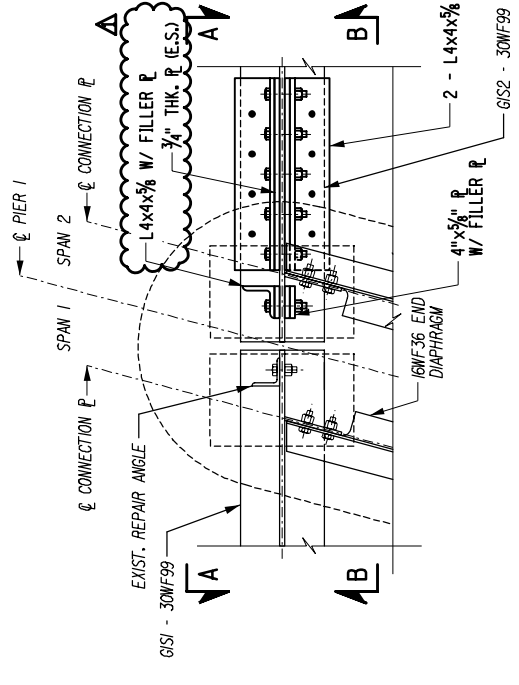


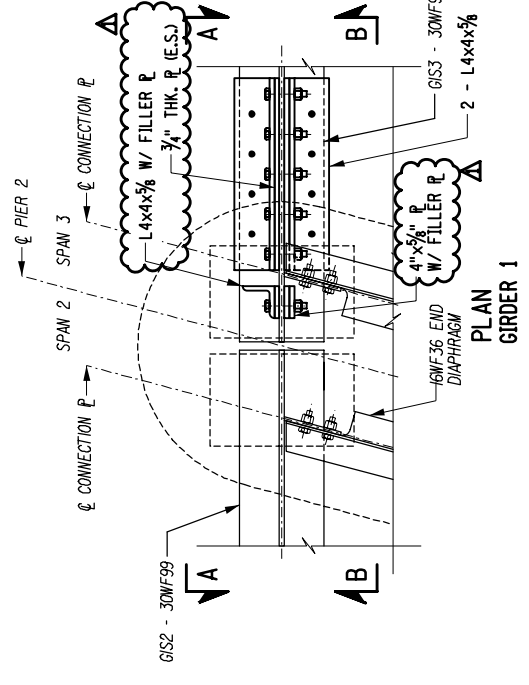
SECTION C-C
GIRDER 1



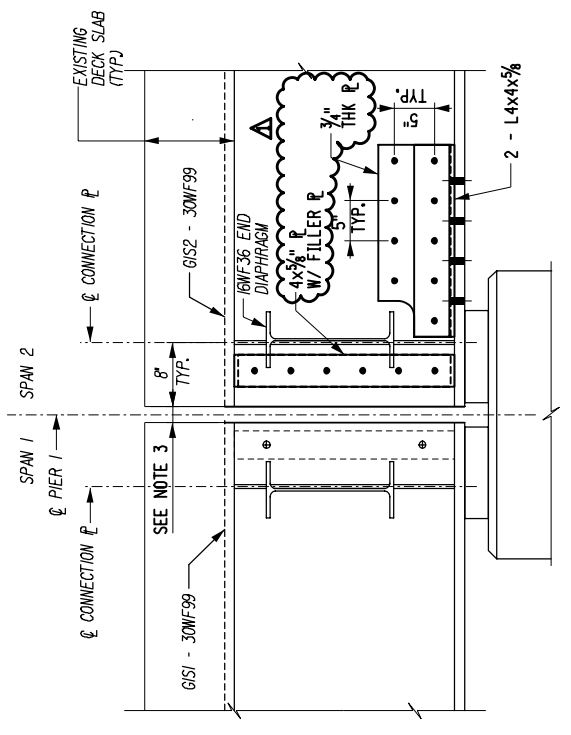
SECTION C-C
GIRDER 1



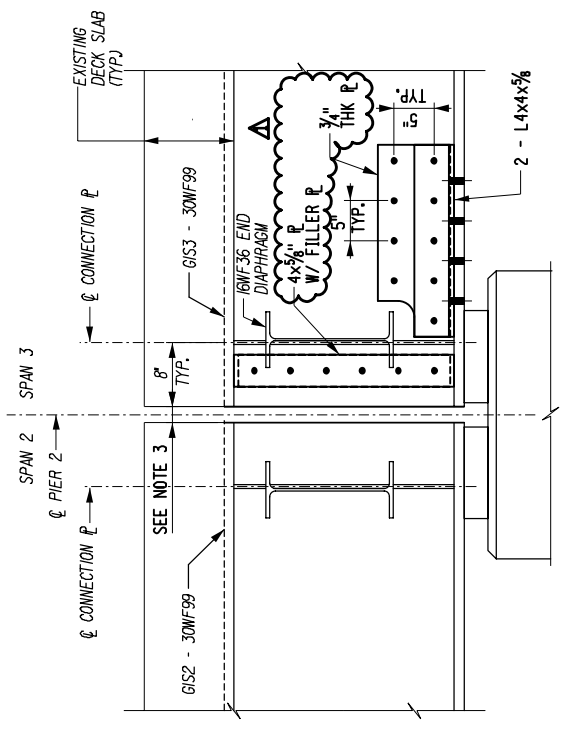
PLAN
GIRDER 1



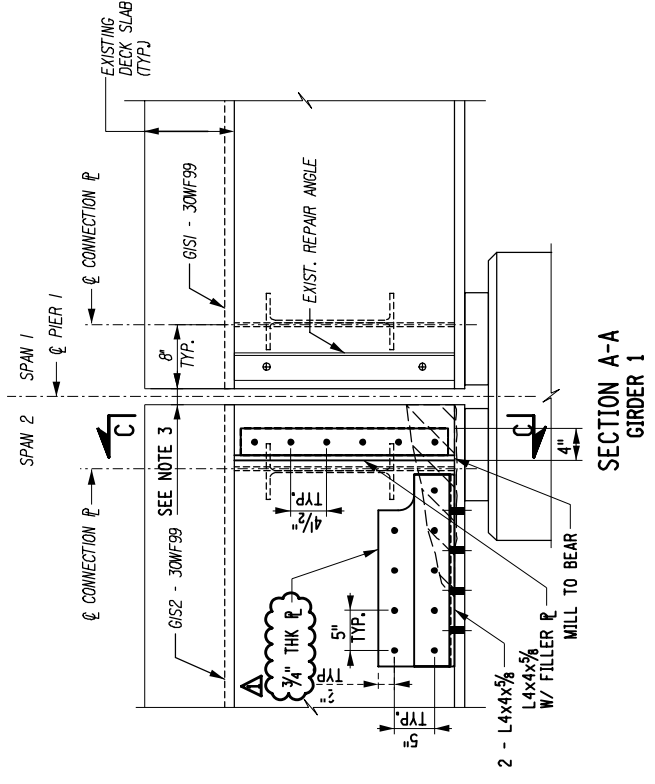
PLAN
GIRDER 1



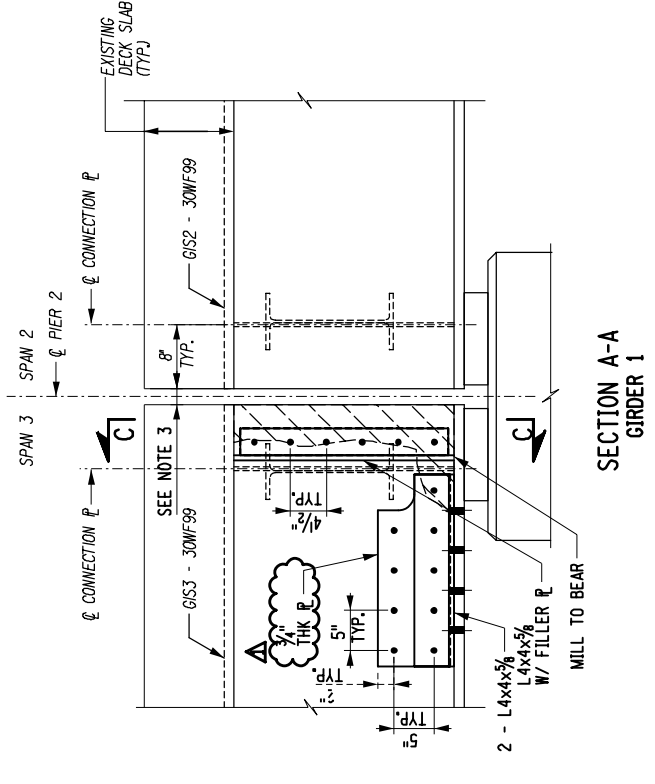
SECTION B-B
GIRDER 1



SECTION B-B
GIRDER 1



SECTION A-A
GIRDER 1



SECTION A-A
GIRDER 1

DETAIL 1 - GIRDER 1 REPAIR
ITEM 564.100001, 586.10
SCALE: 1/2" = 1'-0"

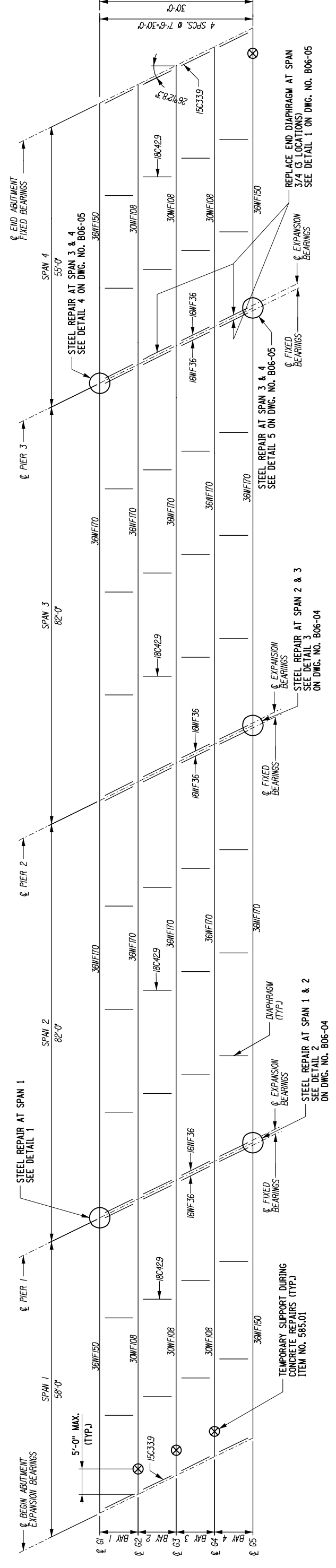
DETAIL 2 - GIRDER 1 REPAIR
ITEM 564.100001, 586.10
SCALE: 1/2" = 1'-0"

LEGEND:
 STEEL SECTION LOSS

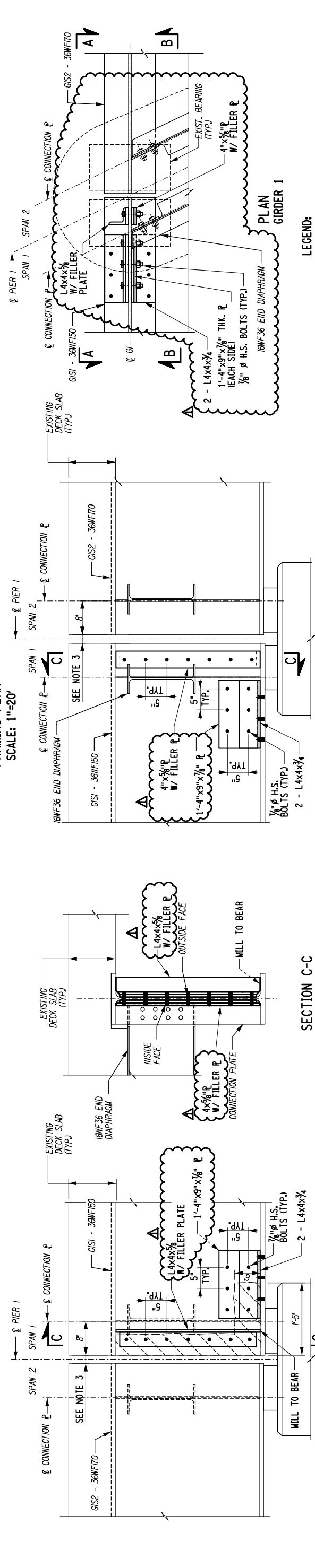
NOTE:

1. NEW STRUCTURAL STEEL PAID FOR UNDER ITEM 564.100001.
2. FIELD DRILLING HOLES IN EXISTING STRUCTURAL STEEL PAID FOR UNDER ITEM 586.10.
3. GAP BETWEEN GIRDER ENDS AT THE CENTERLINE OF PIERS SHALL BE MAINTAINED. GRIND REPAIR PLATES AND ANGLES AS NECESSARY.
4. FOR LEGEND AND ABBREVIATIONS, SEE DWG. NO. ST-IND01.

REV. NO.	DESCRIPTION	DATE
Δ	ANGLE AND PLATE SIZES REVISED	02/21/18



FRAMING PLAN
SCALE: 1"=20'



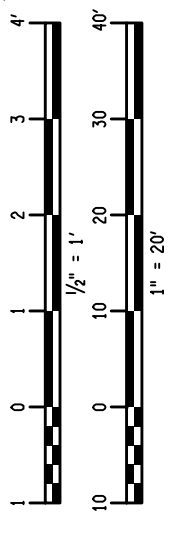
JACKING LOADS FOR STRUCTURAL LIFTING

Item No	Girder	Span	DL	LL+I
585.01	2	1	38.4	45.8
585.01	3	1	38.4	46.8
585.01	4	1	38.4	47.8
585.01	5	4	38.4	48.8

LOADS ARE IN KIPS.
ALL LOADS ARE WORKING LOADS.
LIVE LOAD IS HS-20.
IMPACT IS INCLUDED IN LIVE LOAD.

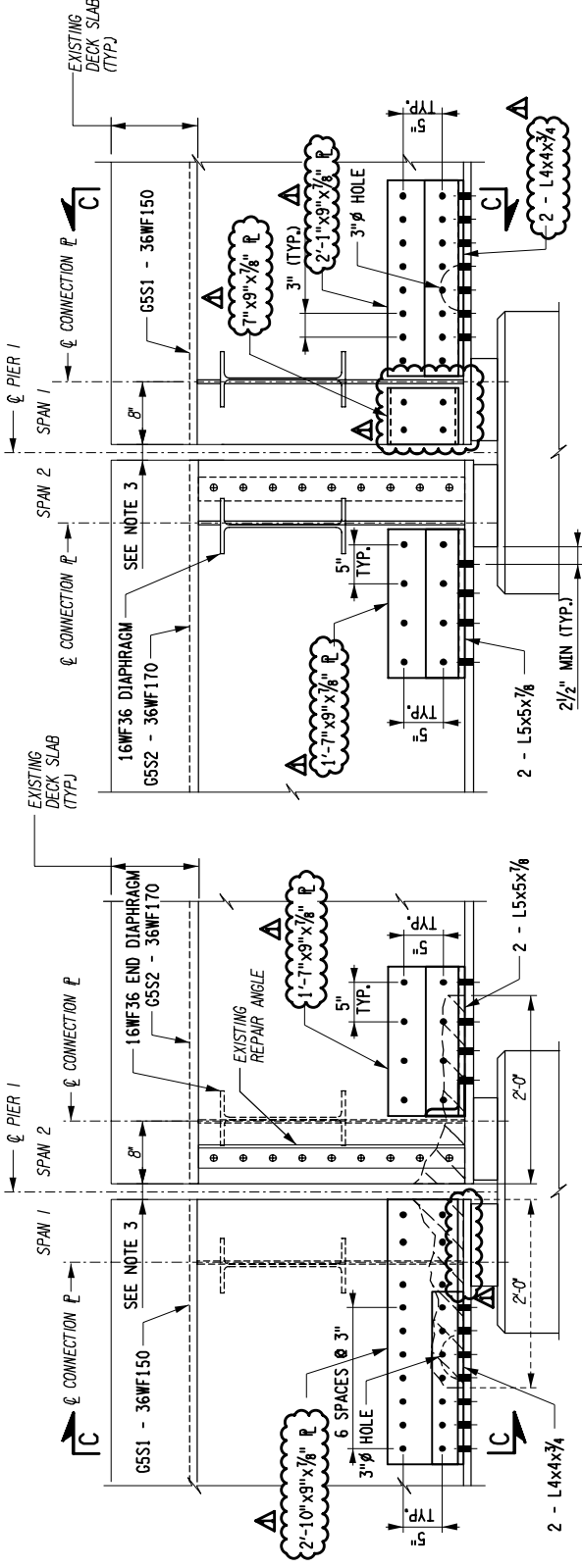
DETAIL 1 - GIRDER 1 REPAIR
ITEM: 564.100001, 586.10
SCALE: 1/2"=1'-0"

REV. NO.	DESCRIPTION	DATE
Δ	ANGLE AND PLATE SIZES REVISED	02/21/18



LEGEND:
 - STEEL SECTION LOSS
 - SUGGESTED SUPPORT LOCATION

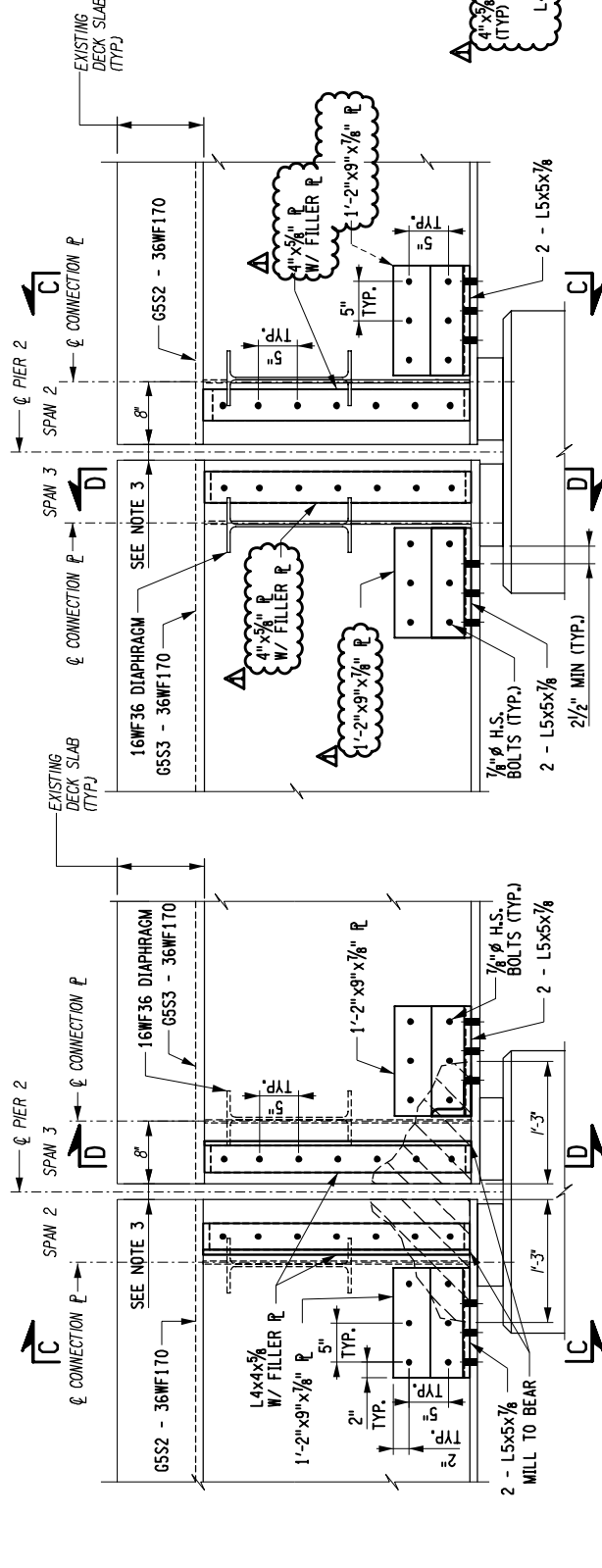
- NOTES:
1. NEW STRUCTURAL STEEL PAID FOR UNDER ITEM 564.100001.
 2. FIELD DRILLING HOLES ON EXISTING STRUCTURAL STEEL PAID FOR UNDER ITEM 586.10.
 3. GAP BETWEEN GIRDER ENDS AT THE CENTERLINE OF PIERS SHALL BE MAINTAINED. GRIND REPAIR PLATES AND ANGLES AS NECESSARY.
 4. FOR LEGEND AND ABBREVIATIONS, SEE DWG. NO. ST-IND01.



SECTION A-A
GIRDER 5

DETAIL 2 - GIRDER 5 REPAIR
ITEM: 564.100001, 586.10
SCALE: 1/2"=1'-0"

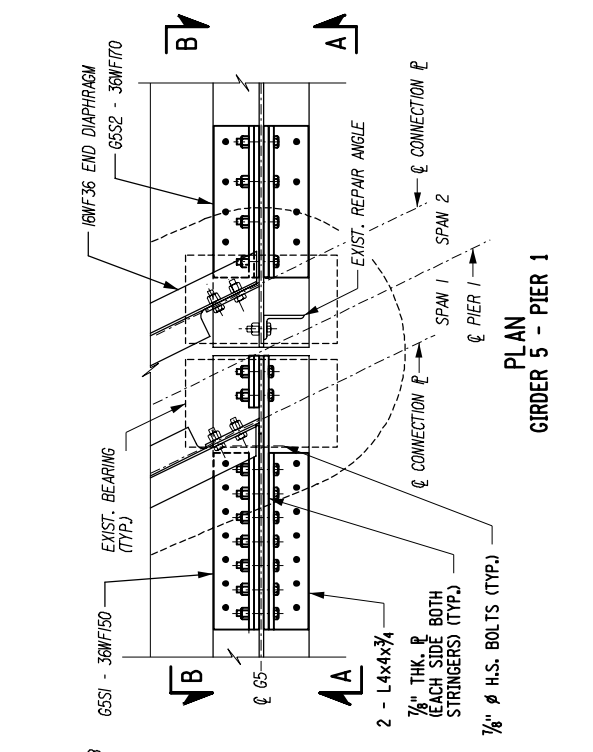
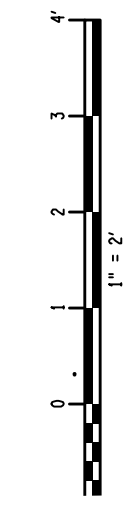
SECTION B-B
GIRDER 5



SECTION A-A
GIRDER 5

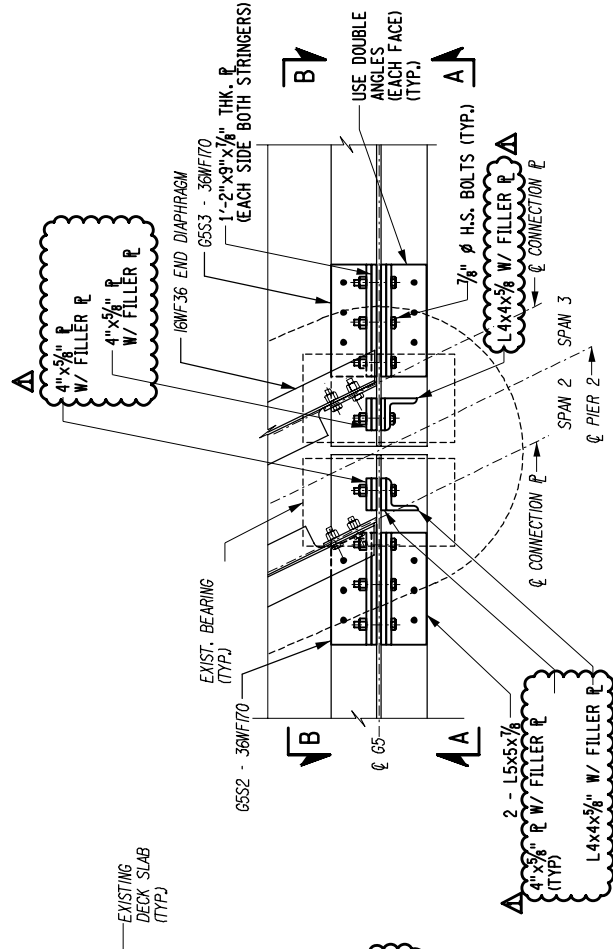
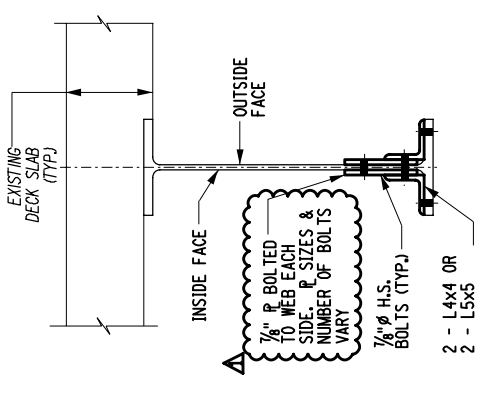
SECTION B-B
GIRDER 5

DETAIL 3 - GIRDER 5 REPAIR
ITEM: 564.100001, 586.10
SCALE: 1/2"=1'-0"



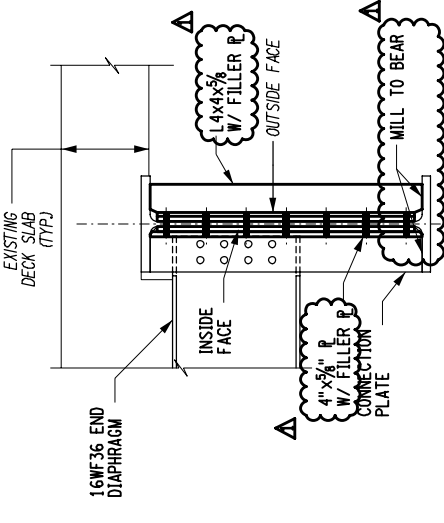
PLAN
GIRDER 5 - PIER 1

SECTION C-C (SHOWN)
SCALE: 1/2"=1'-0"



PLAN
GIRDER 5 - PIER 2

SECTION D-D
SCALE: 1/2"=1'-0"

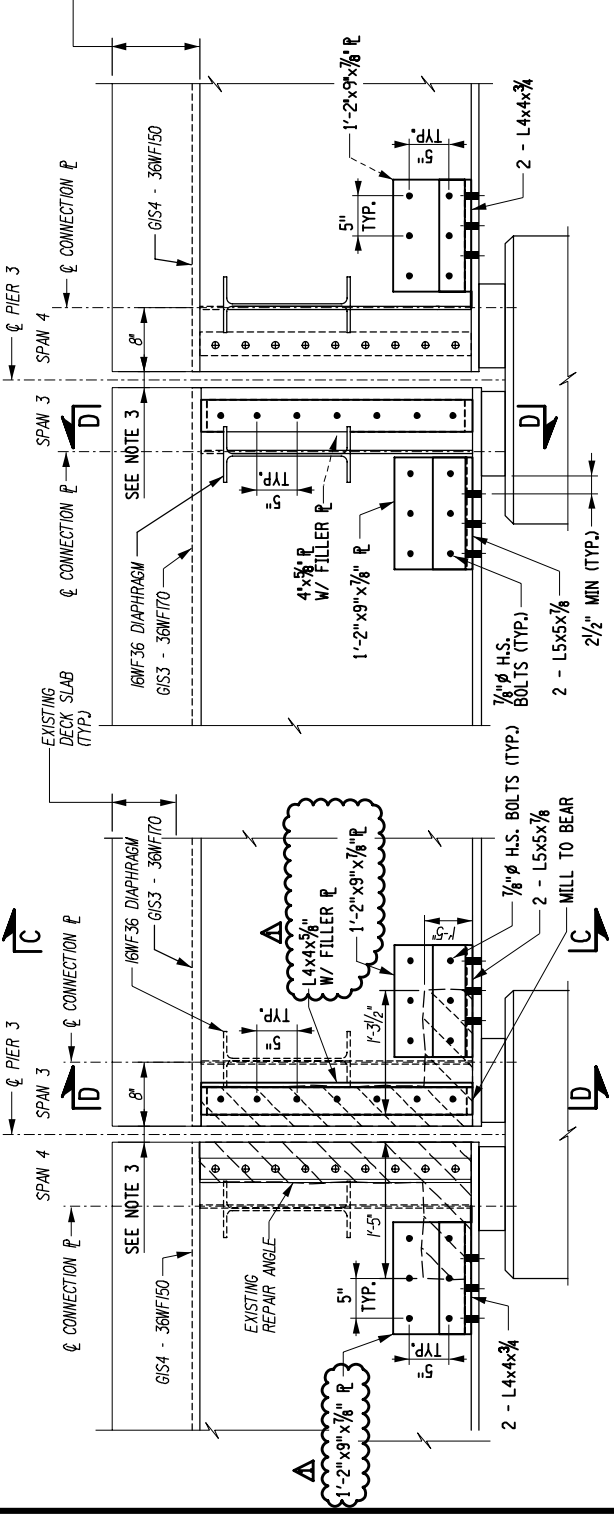


LEGEND:
- STEEL SECTION LOSS

NOTES:

1. NEW STRUCTURAL STEEL PAID FOR UNDER ITEM 564.100001.
2. FIELD DRILLING HOLES ON EXISTING STRUCTURAL STEEL PAID FOR UNDER ITEM 586.10.
3. GAP BETWEEN GIRDER ENDS AT THE CENTERLINE OF PIERS SHALL BE MAINTAINED. GRIND REPAIR PLATES AND ANGLES AS NECESSARY.
4. FOR LEGEND AND ABBREVIATIONS, SEE DWG. NO. ST-IND01.

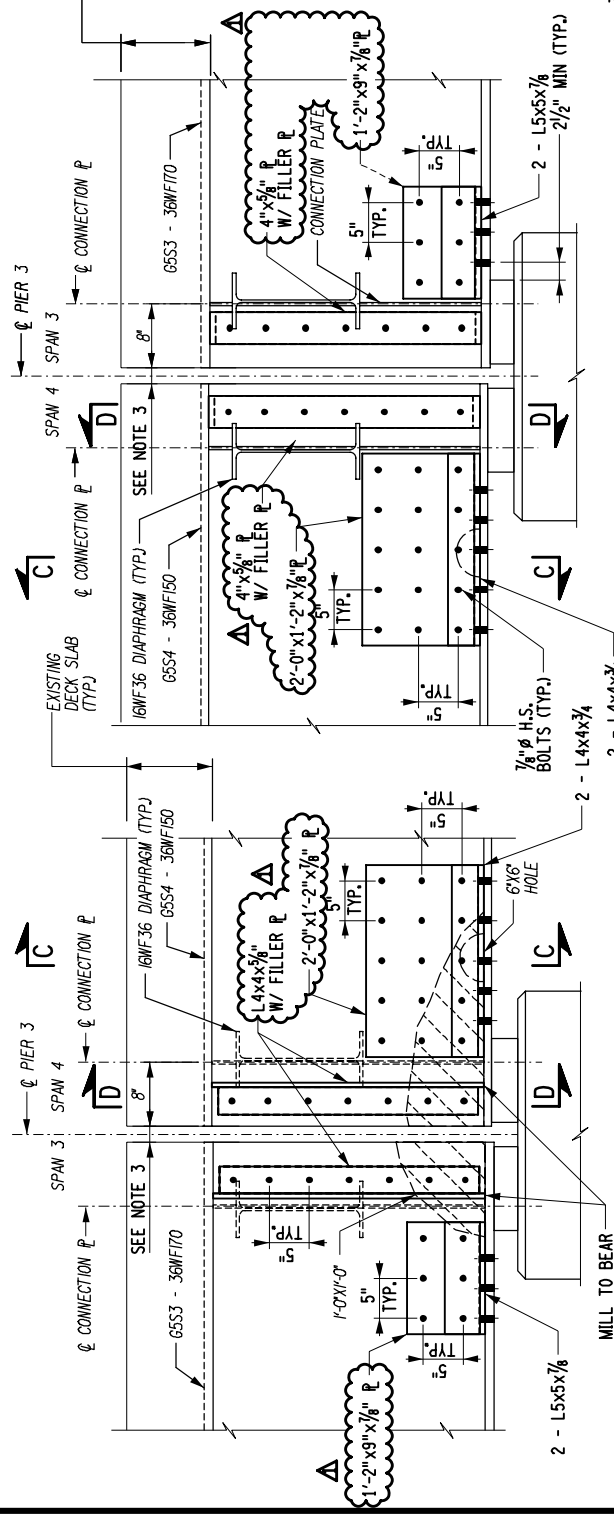
REV. NO.	DESCRIPTION	DATE
Δ	ANGLE AND PLATE SIZES REVISED MILL TO BEAR ADDED	02/21/18



SECTION A-A
GIRDER 1

DETAIL 4 - GIRDER 1 REPAIR
ITEM: 564.100001 AND 586.10
SCALE: 1/2"=1'-0"

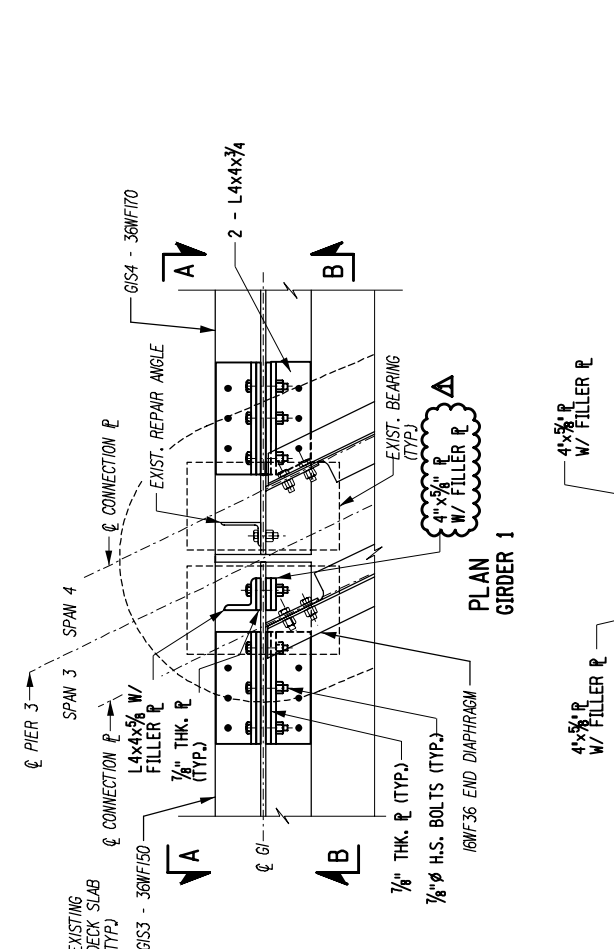
SECTION B-B
GIRDER 1



SECTION A-A
GIRDER 5

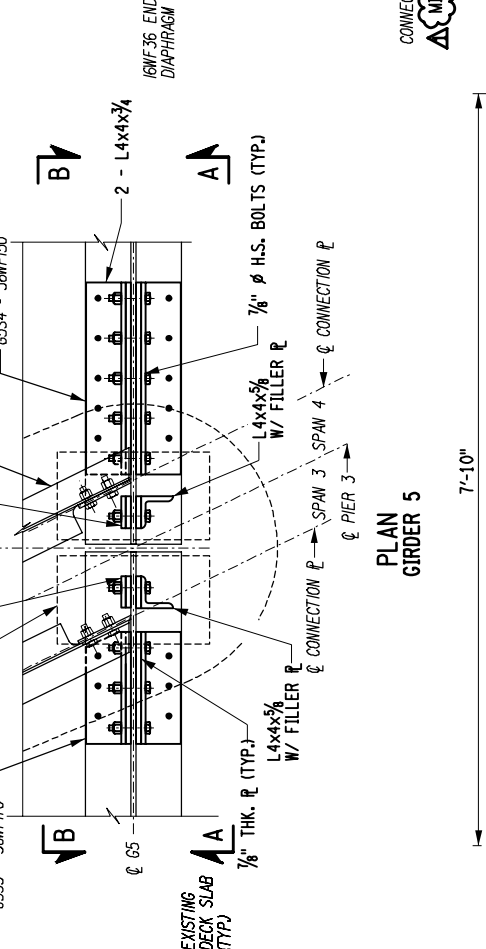
DETAIL 5 - GIRDER 5 REPAIR
ITEM: 564.100001 AND 586.10
SCALE: 1/2"=1'-0"

SECTION B-B
GIRDER 5

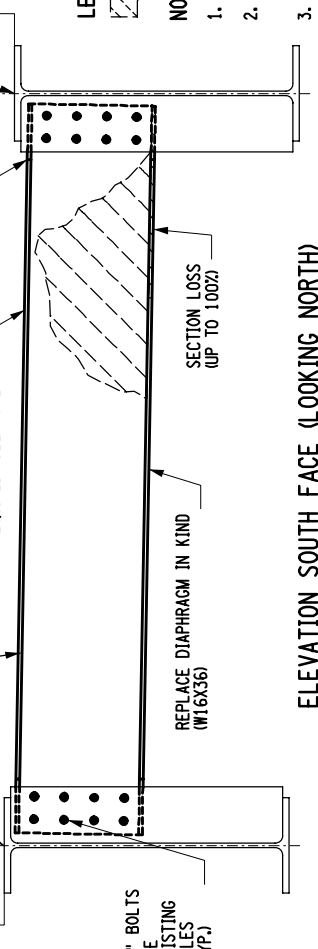


PLAN
GIRDER 1

SECTION C-C
SCALE: 1/2"=1'-0"



SECTION D-D
SCALE: 1/2"=1'-0"



LEGEND:
- STEEL SECTION LOSS

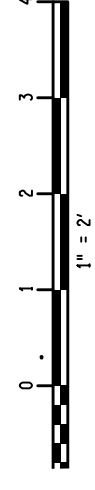
NOTES:

1. NEW STEEL STRUCTURAL STEEL PAID FOR ITEM UNDER 564.100001.
2. FIELD DRILLING HOLES ON EXISTING STRUCTURAL STEEL PAID FOR UNDER ITEM 586.10.
3. GAP BETWEEN GIRDER ENDS AT THE CENTERLINE OF PIERS SHALL BE MAINTAINED. GRIND REPAIR PLATES AND ANGLES AS NECESSARY.
4. WHEN INSTALLING NEW STEEL DIAPHRAGM, ENSURE TIGHT CONTACT BETWEEN STEEL TOP FLANGE AND THE EXISTING CONCRETE.
5. FOR LEGEND AND ABBREVIATIONS, SEE DWG. NO. ST-IND01.

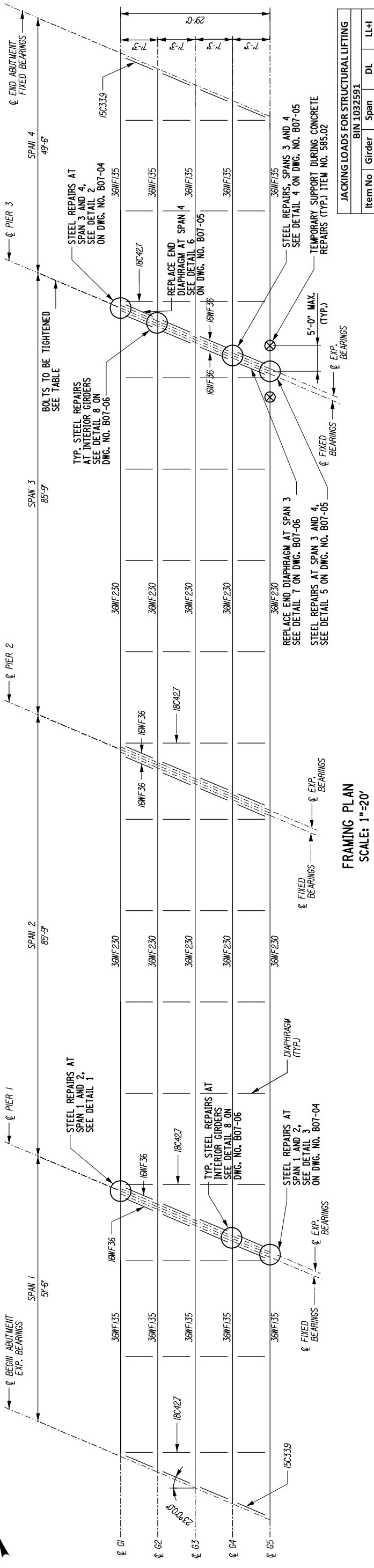
ELEVATION SOUTH FACE (LOOKING NORTH)
DETAIL 1

ITEM: 564.100002 AND 589.520003
SCALE: 1/2"=1'-0"

REV. NO.	DESCRIPTION	DATE
Δ	ANGLE AND PLATE SIZES REVISED MILL TO BEAR ADDED	02/21/18



AF...
ON

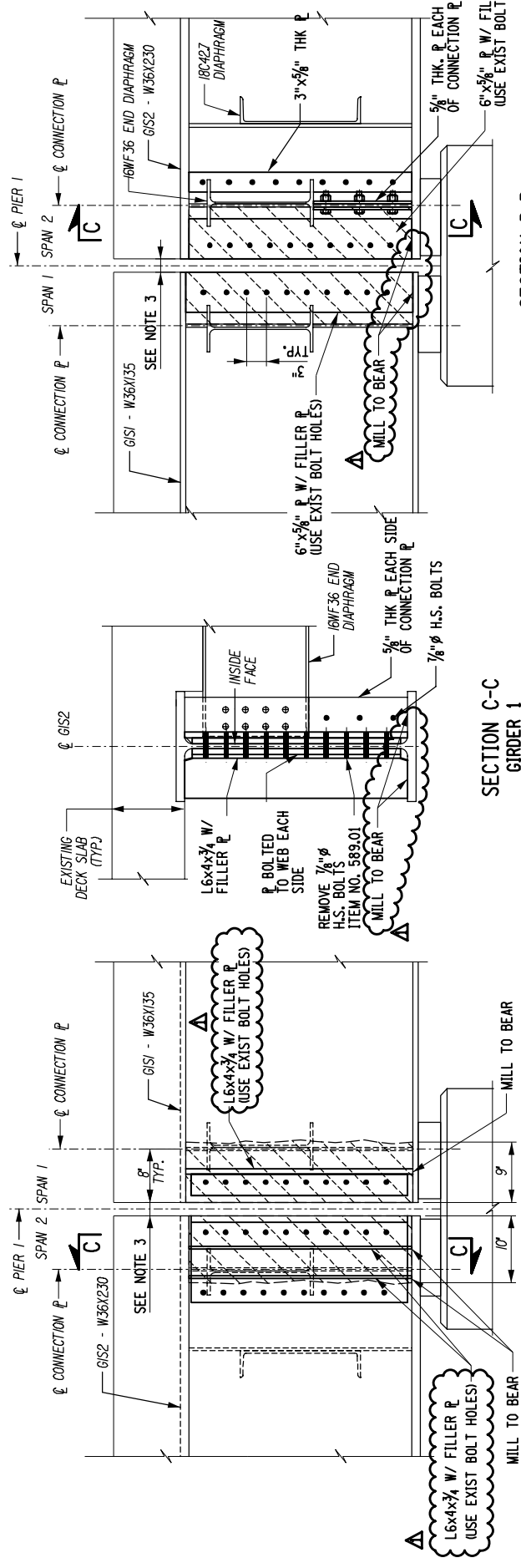


FRAMING PLAN
SCALE: 1"=20'

JACKING LOADS FOR STRUCTURAL LIFTING
BIN 1032591

Item No	Girder	Span	DL	LL+I
585.02	5	3	77.3	49.5
585.02	5	4	39.9	46.1

LOADS ARE IN KIPS.
ALL LOADS ARE WORKING LOADS.
LIVE LOAD IS HS-20.
IMPACT IS INCLUDED IN LIVE LOAD.

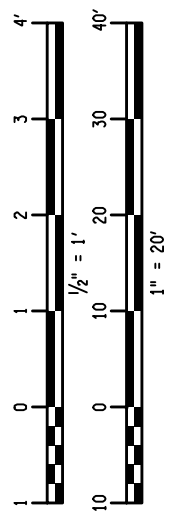


SECTION B-B
GIRDER 1

SECTION C-C
GIRDER 1

SECTION A-A
GIRDER 1

DETAIL 1 - GIRDER 1 REPAIR
ITEM: 564.100001, 586.10
SCALE: 1/2"=1'-0"



NOTES:

1. NEW STEEL STRUCTURAL STEEL PAID FOR UNDER ITEM 564.100001 AND 564.100002.
2. FIELD DRILLING HOLES ON EXISTING STRUCTURAL STEEL PAID FOR UNDER ITEM 566.10
3. GAP BETWEEN GIRDER ENDS AT THE CENTERLINE OF PIERS SHALL BE MAINTAINED, GRIND REPAIR PLATES AND ANGLES AS NECESSARY.
4. FOR LEGEND AND ABBREVIATIONS, SEE DWG. NO. ST-IND01.
5. STAGGER BOLT HOLES AS NECESSARY TO AVOID CONFLICTS WITH EXISTING BASE METAL AND BOLTS.

LEGEND:

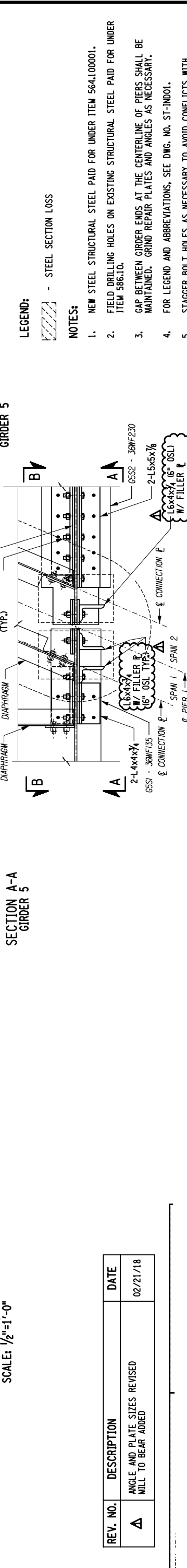
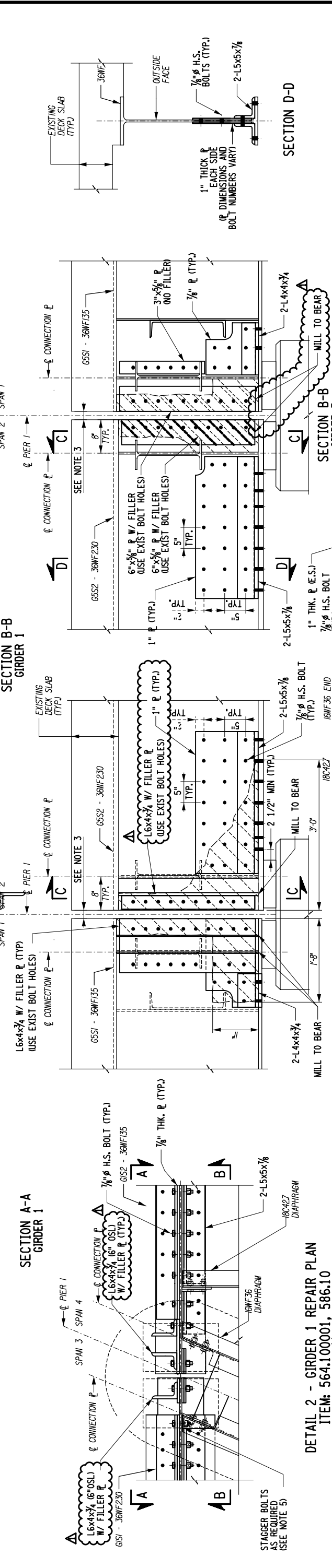
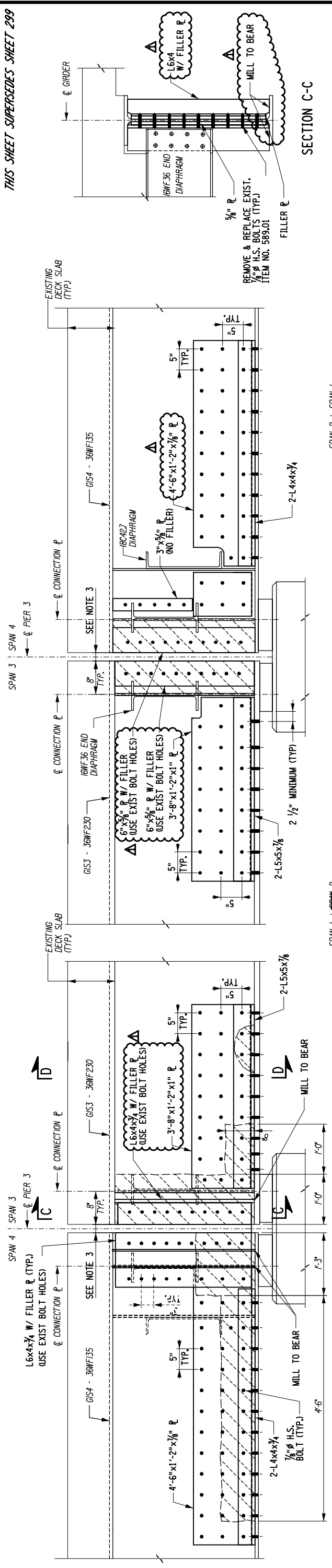
- ▨ - STEEL SECTION LOSS
- ⊗ - SUGGESTED SUPPORT LOCATION

BOLT TIGHTENING TABLE

STRINGER / PIER 3	SPAN NO.	NO. BOLTS
G2	3	1
G3	4	1
G4	4	1

REV. NO.	DESCRIPTION	DATE
Δ	ANGLE AND PLATE SIZES REVISED MILL TO BEAR ADDED	02/21/18

AF
ON



DETAIL 2 - GIRDER 1 REPAIR PLAN
 ITEM: 564.100001, 586.10
 SCALE: 1/2"=1'-0"

DETAIL 3 - GIRDER 5 REPAIR PLAN
 ITEM: 564.100001, 586.10
 SCALE: 1/2"=1'-0"



REV. NO.	DESCRIPTION	DATE
Δ	ANGLE AND PLATE SIZES REVISED MILL TO BEAR ADDED	02/21/18

- LEGEND: - STEEL SECTION LOSS
- NOTES:
- NEW STEEL STRUCTURAL STEEL PAID FOR UNDER ITEM 564.100001.
 - FIELD DRILLING HOLES ON EXISTING STRUCTURAL STEEL PAID FOR UNDER ITEM 586.10.
 - GAP BETWEEN GIRDER ENDS AT THE CENTERLINE OF PIERS SHALL BE MAINTAINED. GRIND REPAIR PLATES AND ANGLES AS NECESSARY.
 - FOR LEGEND AND ABBREVIATIONS, SEE DWG. NO. ST-10001.
 - STAGGER BOLT HOLES AS NECESSARY TO AVOID CONFLICTS WITH EXISTING BASE METAL AND BOLTS.

SECTION C-C

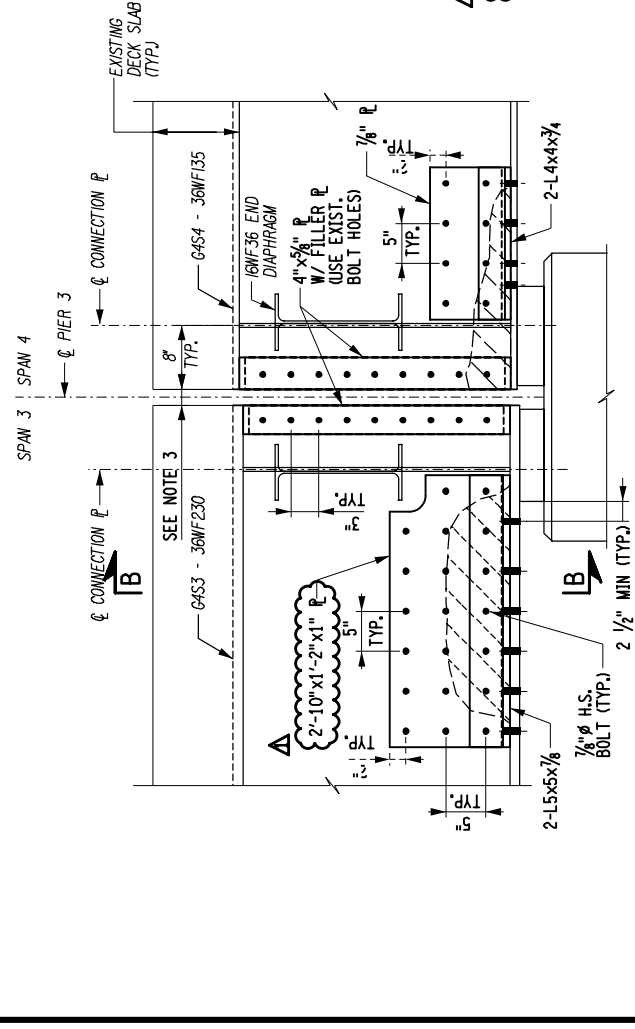
SECTION B-B
GIRDER 1

SECTION B-B
GIRDER 5

SECTION A-A
GIRDER 1

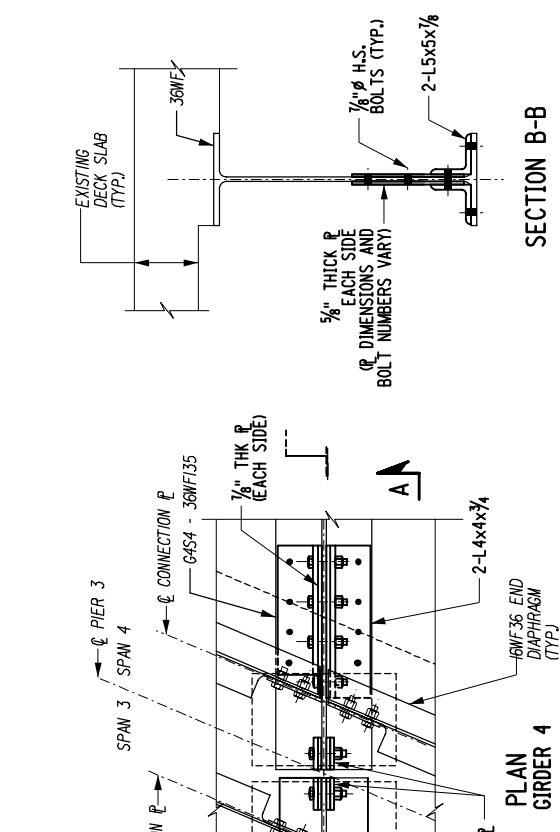
SECTION A-A
GIRDER 5

SECTION D-D

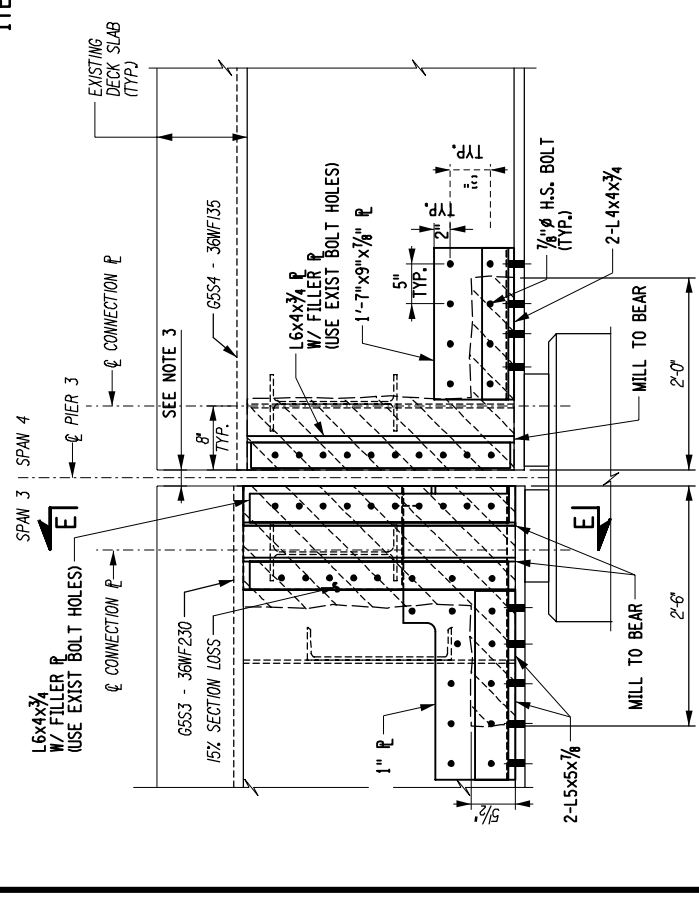


SECTION A-A
GIRDER 4

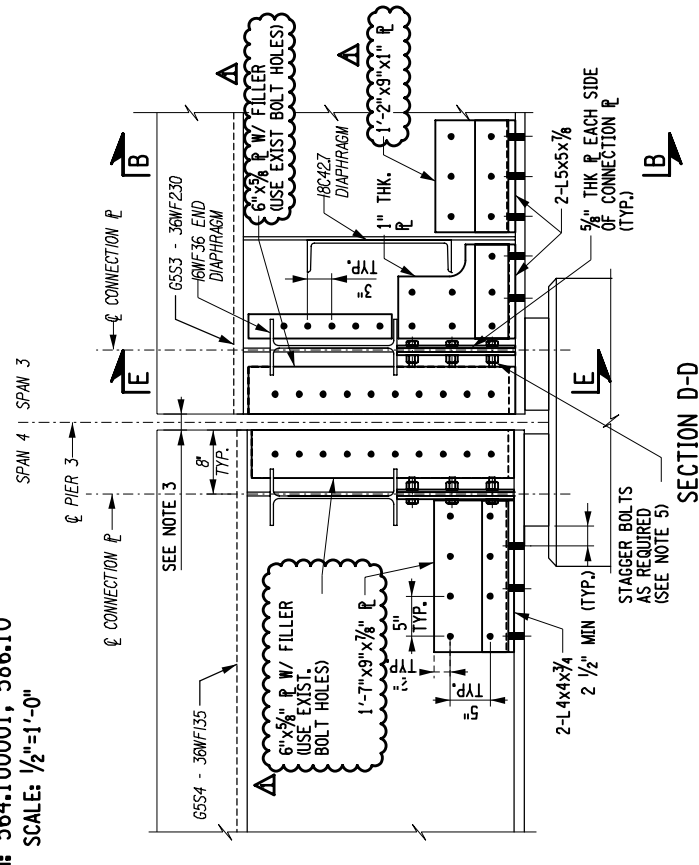
DETAIL 4 - GIRDER 4 REPAIR
ITEM: 564.100001, 586.10
SCALE: 1/2"=1'-0"



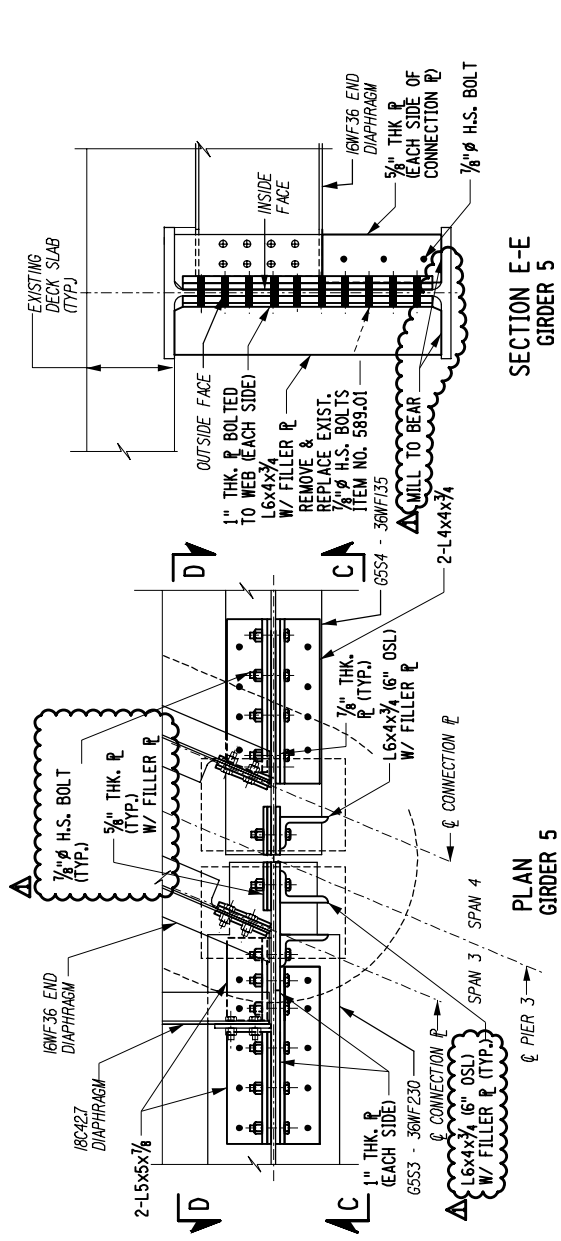
SECTION B-B



SECTION C-C
GIRDER 5



SECTION D-D
GIRDER 5



SECTION E-E
GIRDER 5

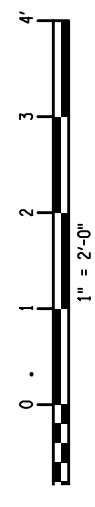
LEGEND:
[Hatched Box] - STEEL SECTION LOSS

NOTES:

1. NEW STRUCTURAL STEEL PAID FOR UNDER ITEM 564.100001.
2. FIELD DRILLING HOLES ON EXISTING STRUCTURAL STEEL PAID FOR UNDER ITEM 586.10
3. GAP BETWEEN GIRDER ENDS AT THE CENTERLINE OF PIERS SHALL BE MAINTAINED. GRIND REPAIR PLATES AND ANGLES AS NECESSARY.
4. FOR LEGEND AND ABBREVIATIONS, SEE DWG. NO. ST-IND01.
5. STAGGER BOLT HOLES AS NECESSARY TO AVOID CONFLICTS WITH EXISTING BASE METAL AND BOLTS.

DETAIL 5 - GIRDER 5 REPAIR
ITEM: 564.100001, 586.10
SCALE: 1/2"=1'-0"

REV. NO.	DESCRIPTION	DATE
Δ	ANGLE AND PLATE SIZES REVISED MILL TO BEAR ADDED	02/21/18



AF
OK