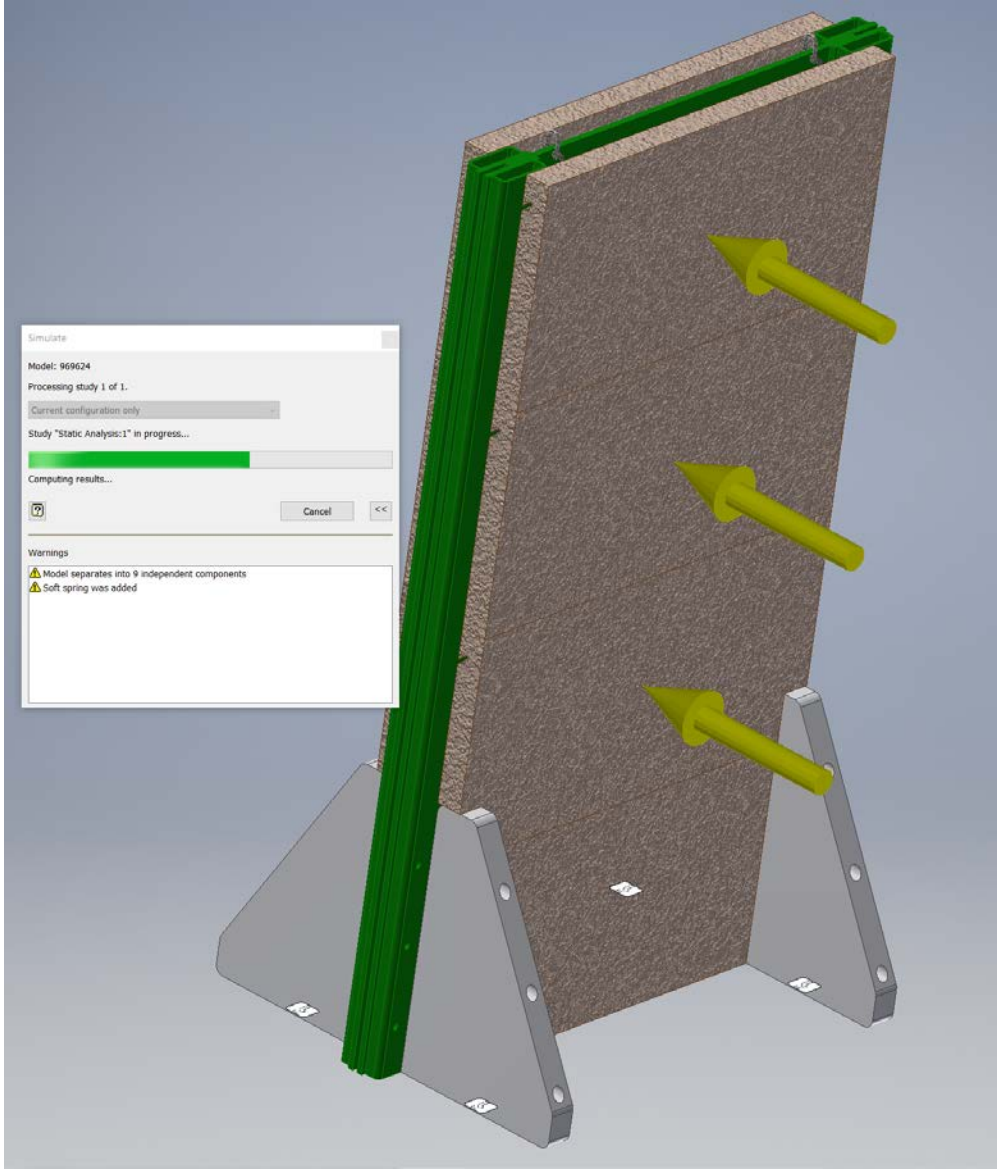
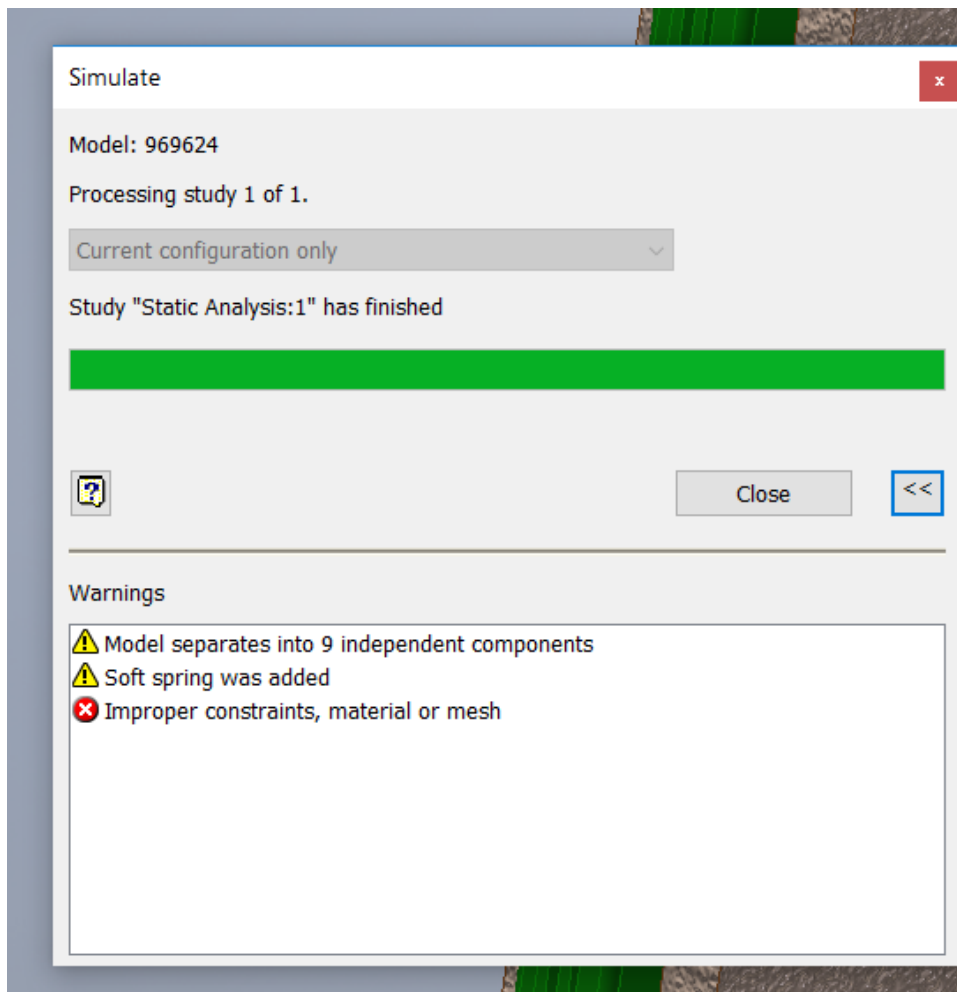
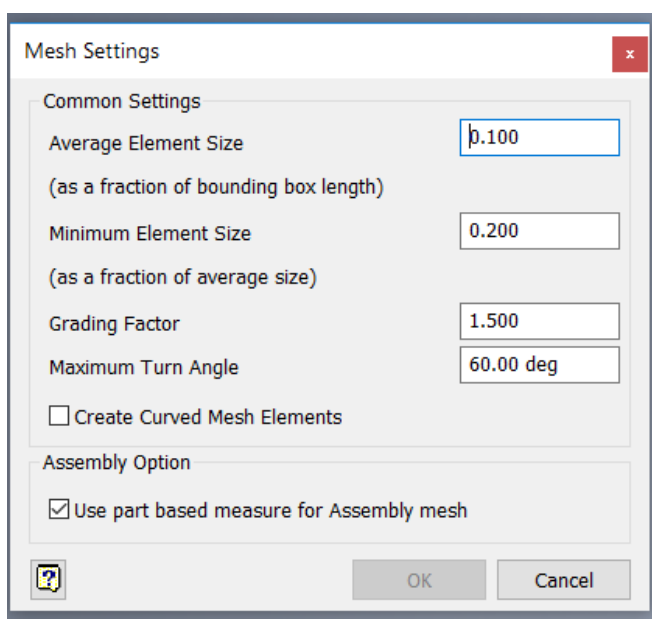


Fixed constraint – Base





Mesh settings



Convergence Settings

h

Maximum Number of h Refinements

10.000

Stop Criteria (%)

0.750

h Refinement Threshold (0 to 1)

Results to Converge

☒ Von Mises Stress

☐ 1st Principal Stress

☐ 3rd Principal Stress

☐ Displacement

Geometry Selections

☒ All Geometry

☐ Include Selected Geometry

☐ Exclude Selected Geometry

Bodies

Faces

?

Reset

OK

Cancel

Stress Analysis Settings

General

Solver

Meshing

Default Type:

Static Analysis

Default Objective:

Single Point

Contacts

Tolerance

0.100 mm

Type

Bonded

Normal Stiffness

0.000 N/mm

Tangential Stiffness

0.000 N/mm

Shell Connector Tolerance

(as a multiple of shell thickness)

1.750

Excluded Components

Display as:

☐ Invisible

☐ Transparent

☒ Shaded

Glyph Display

Global Glyph Scale:

10

%

Initial Label Placement Distance

10.000

%

?

Reset

OK

Cancel