

GENERAL ELECTRIC

RECTIFIER TRANSFORMER FOR USE WITH 12 PHASE 3000 KW 625 VOLT D-C DOUBLE WAY SILICON RECTIFIER FOR HEAVY TRACTION SERVICE

NO. _____ **CLASS** 0A **THREE-PHASE TO TWELVE-PHASE** **60 CYCLES**

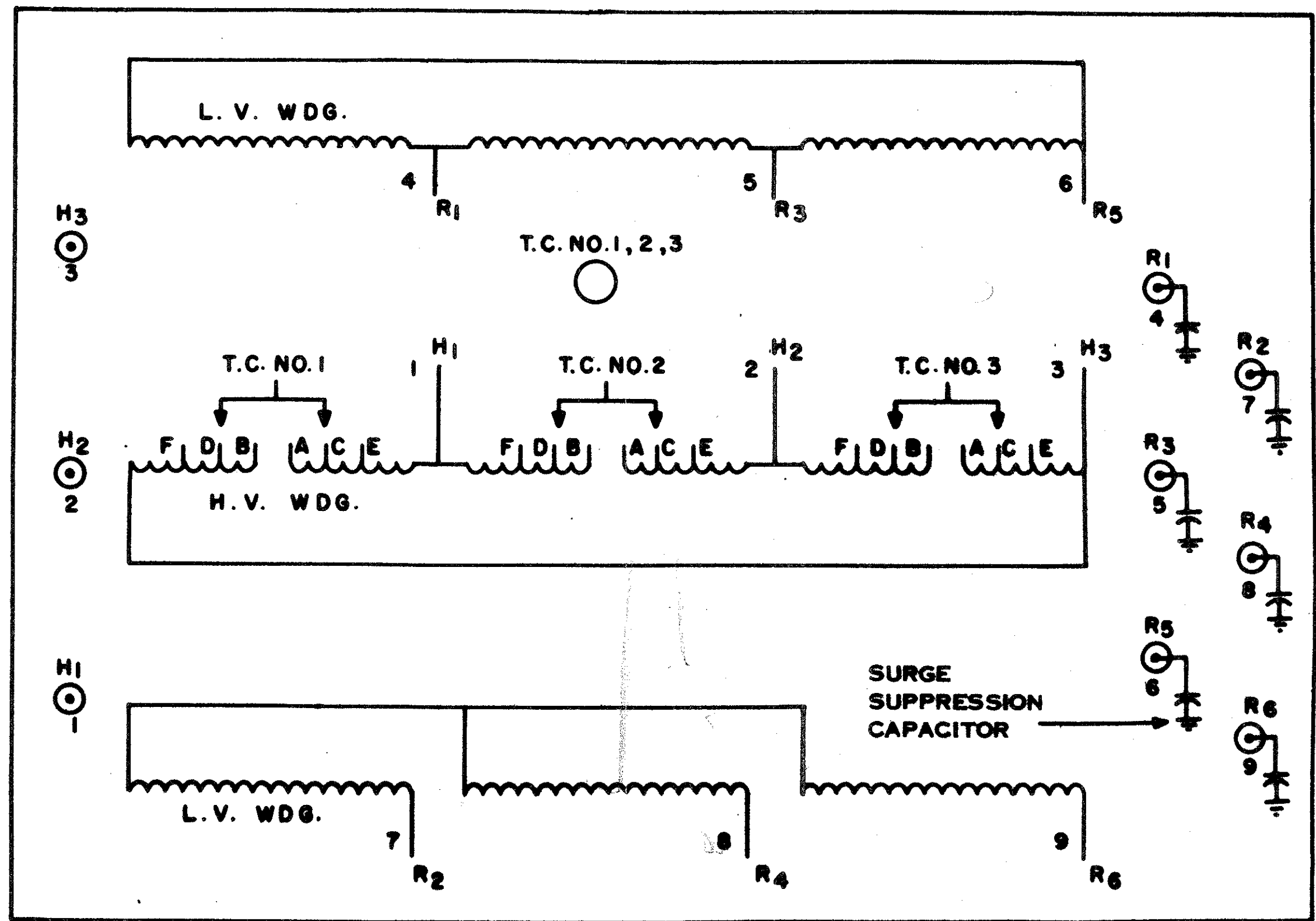
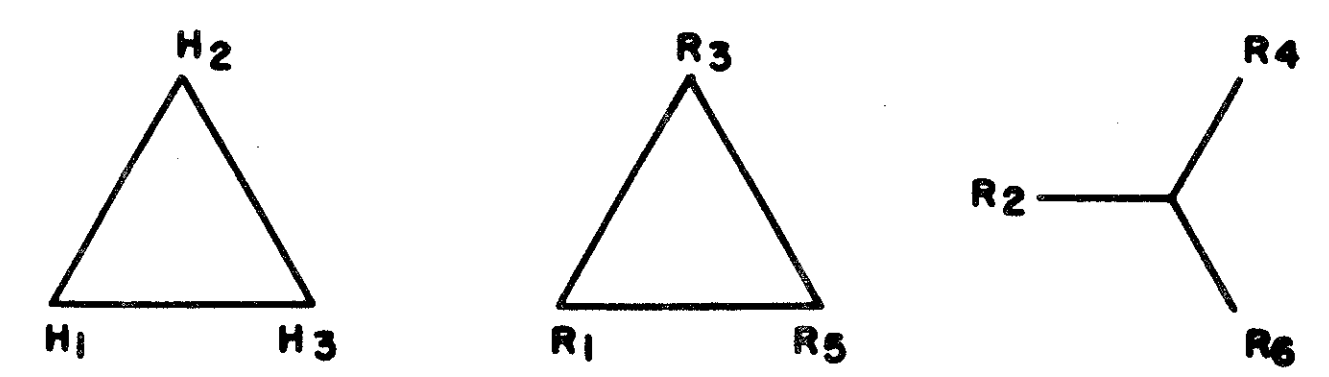
VOLTAGE RATING 26400-490-490Y
 KVA RATING 3220 CONTINUOUS 60 C RISE FOR A LOAD CONDITION FOLLOWING CONTINUOUS FULL LOAD, OF 2 HOURS AT 4830 KVA LOAD, WITH FIVE PERIODS OF 9660 KVA LOAD FOR 1 MINUTE, AND ONE PERIOD OF 14490 KVA LOAD FOR 15 SECONDS, EQUALLY SPACED THROUGHOUT THE 2 HOUR PERIOD

HIGH VOLTAGE CONNECTIONS				LOW VOLTAGE CONNECTIONS			
LINES ON H1, H2, H3				LINES ON R1, R3, R5		LINES ON R2, R4, R6	
VOLTS	AMP	TAP CHANGERS NO. 1, 2, 3		VOLTS	AMP	VOLTS	AMP
		DIAL POS.	CONNECT				
27720	67.1	1	A TO B	490 DELTA	1960	490 WYE	1960
27060	68.7	2	B TO C				
26400	70.4	3	C TO D				
25740	72.2	4	D TO E				
25080	74.1	5	E TO F				

BASIC INSULATION LEVEL		
ITEM	IMPULSE LEVEL FULL WAVE KV	
H1 H2 H3	200	

LIQUID LEVEL AT 25 C IS 11.125 INCHES BELOW TOP OF MANHOLE FLANGE.
 LIQUID LEVEL CHANGES .74 INCH PER 10 C CHANGE IN LIQUID TEMPERATURE.

TRANSFORMER OPERATING PRESSURE RANGE IS -7.5 PSI POSITIVE TO 5 PSI NEGATIVE.
 TRANSFORMER TANK SUITABLE TO WITHSTAND 10 PSI PRESSURE AND 7.5 PSI VACUUM WITH ALL TANK BRACING IN PLACE.



COMMUTATING REACTANCE	OHMS (LINE TO NEUTRAL) 26400-490 VOLT CONN.	SN
COMMUTATING REACTANCE	OHMS (LINE TO NEUTRAL) 26400-490Y VOLT CONN.	SEE NOTES:
IMPEDANCE VOLTS	PER CENT 26400-490 VOLTS AT 1660 KVA	
IMPEDANCE VOLTS	PER CENT 26400-490Y VOLTS AT 1660 KVA	

SN	D596846	D596847	D596848	D596849	D596850	D596851
	.00950	.00965	.00965	.00965	.00959	.00945
	.01005	.00994	.00985	.00978	.00990	.00976
1	6.57	6.68	6.68	6.67	6.65	6.57
2	6.95	6.88	6.82	6.76	6.89	6.80

APPROX. WEIGHT IN POUNDS
 TOTAL 37100
 WHEN UNTANKING 11900
 TANK AND FITTINGS 13500
 NO. 10-C OIL 1565 GAL. 11700
 FOR INDOOR INSTALLATION

CAUTION! BEFORE INSTALLING OR OPERATING READ INSTRUCTIONS 6EK-19493

PITTSFIELD MASS

MADE IN U.S.A.

- NOTES:
 1 FULTON ESSEX - UNIT A
 2 " " - UNIT B
 3 MANHATTAN BRIDGE YORK - UNIT A
 4 " " - UNIT B
 5 MONTAGUE-FURMAN - UNIT A
 6 " " - UNIT B

254490
 254362
 WAS GE DWG. NP254244

SUPPLEMENTAL DRAWING FOR INFORMATION ONLY

5-23-77 S.C.	APPROVED FOR OPERATION	J.S. H.S.
REV DATE	(DESCRIPTION)	CW'K'D APP'D
NEW YORK CITY TRANSIT AUTHORITY POWER DEPARTMENT ENGINEERING DIVISION NAMEPLATE RECTIFIER POWER TRANS. MANHATTAN BRIDGE YORK STREET MONTAGUE, FURMAN & FULTON ESSEX STREET		

DWG. NO. 214A-49

22" x 32" = 4.9#