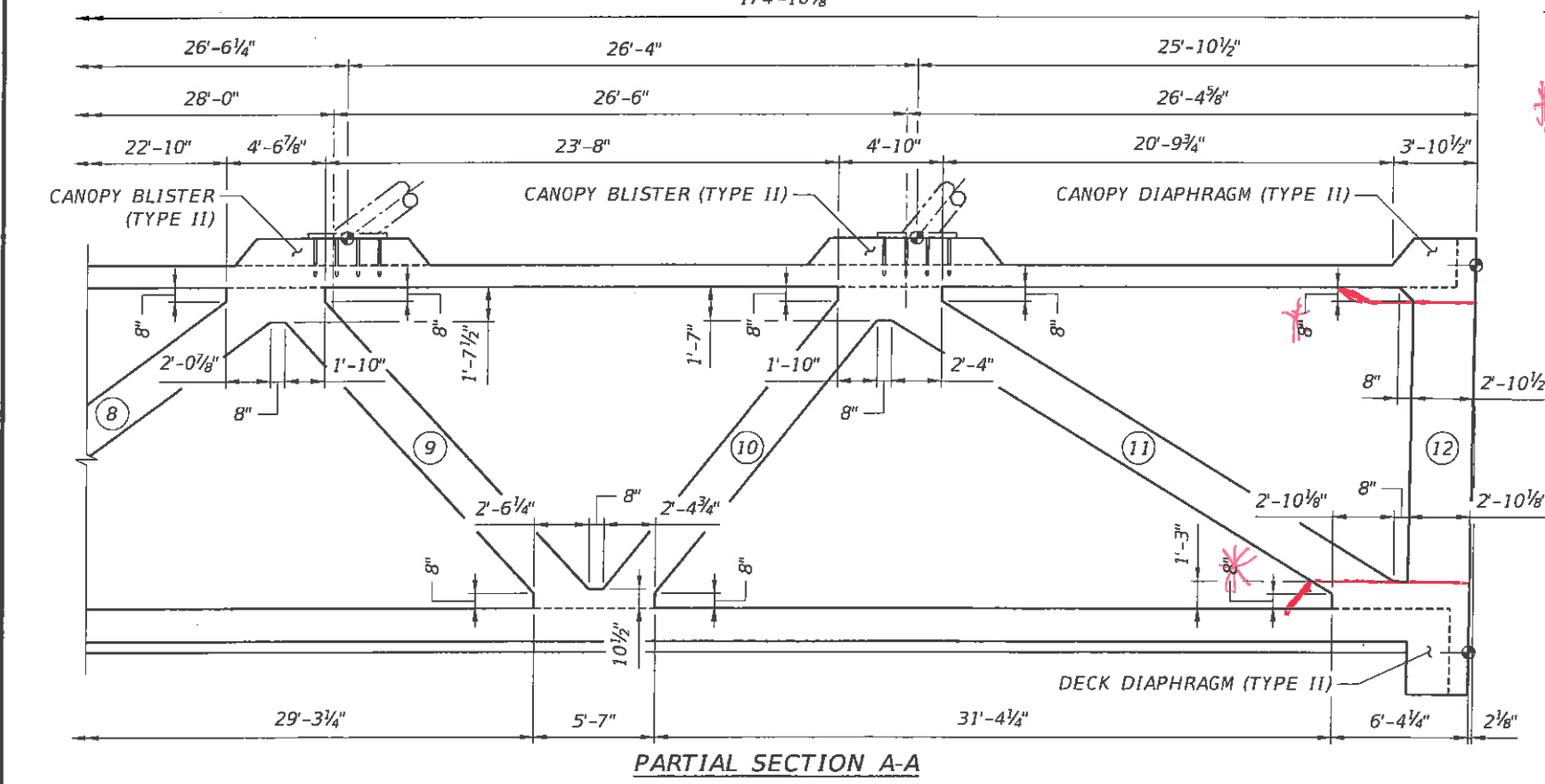
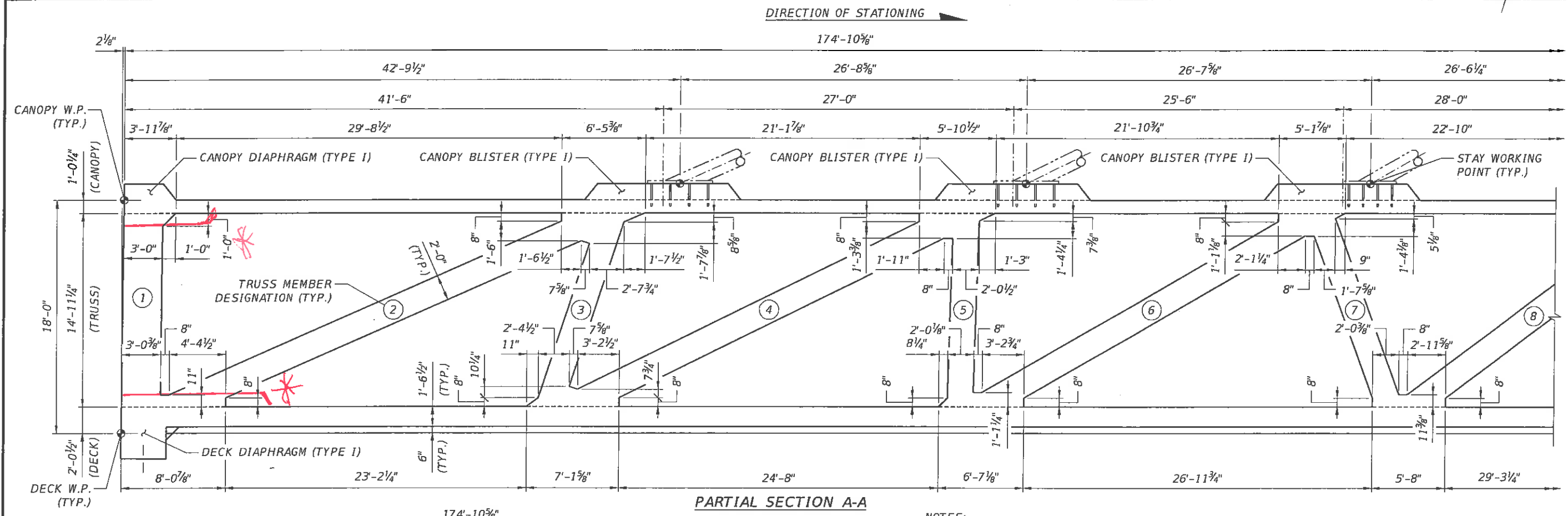
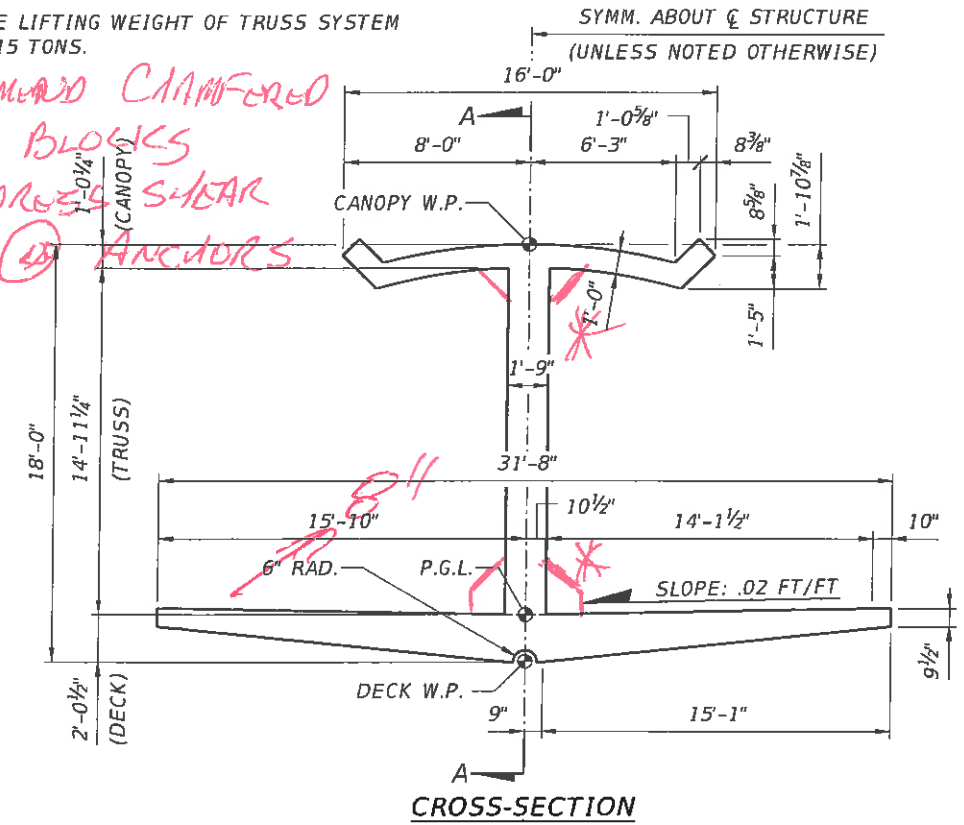


9020



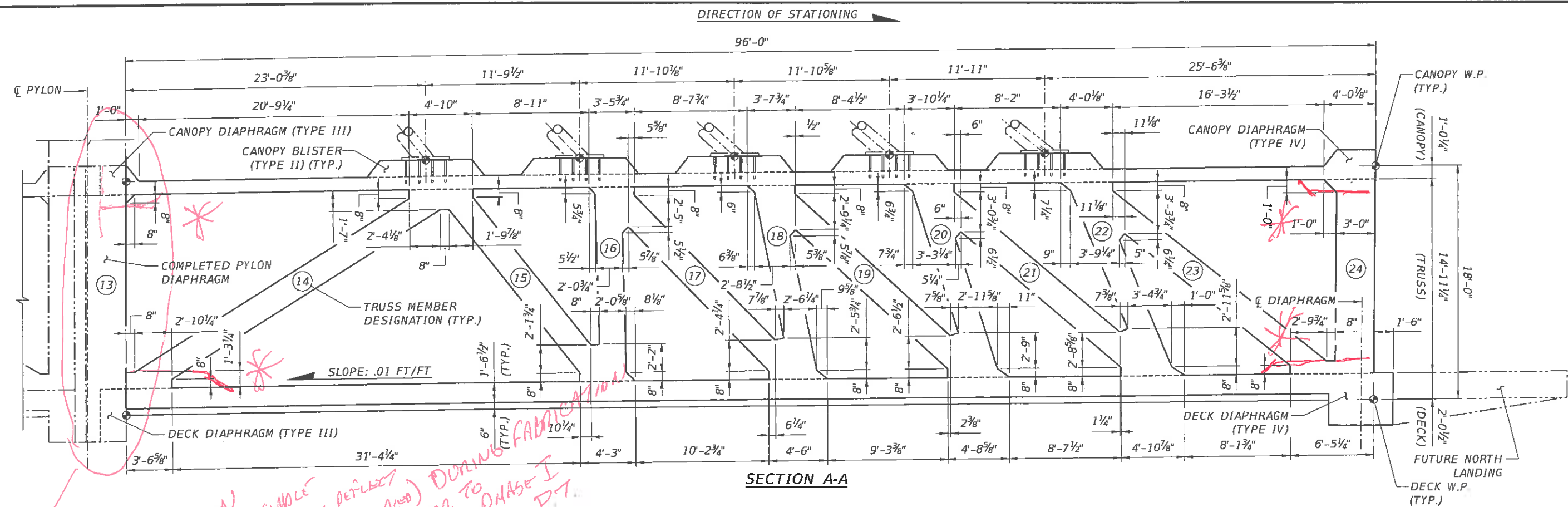
NOTES:
1. APPROXIMATE LIFTING WEIGHT OF TRUSS SYSTEM
SYSTEM = 915 TONS.

* RECOMMEND CHAMFERED
END BLOCKS
TO ADDRESS SHEAR
LAG @ ANCHORS



REVISIONS						ENGINEER OF RECORD:			DRAWN BY:			SHEET TITLE:		
DATE	BY	DESCRIPTION	DATE	BY	DESCRIPTION	FIGG			DCB			MAIN SPAN TRUSS SYSTEM LAYOUT		
						424 North Calhoun Street			CHECKED BY:			UNIVERSITYCITY PROSPERITY PROJECT		
						Tallahassee, Florida 32301			MF			PROJECT NO.		
						FLORIDA CERTIFICATE OF AUTHORIZATION NO. 5618			DESIGNED BY:			UNIVERSITYCITY PROSPERITY PROJECT		
						W. DENNEY PATE, P.E. - P.E. NO. 34332			EDL			SHEET NO.		
									CHECKED BY:			B-36		
									MF					

90% SUBMITTAL - NOT FOR CONSTRUCTION - SEPTEMBER 2016



ISOLATE
SPAN FROM Pylon
SO SPAN CAN ACT SIMPLY
AS CONCRETE (TURNS DEFLECT
AND PRIOR TO PHASE 1
PT)

1'-0 1/4" (CANOPY)

16'-0"

8'-0"

1'-0 5/8"

6'-3"

8 3/8"

8 5/8"

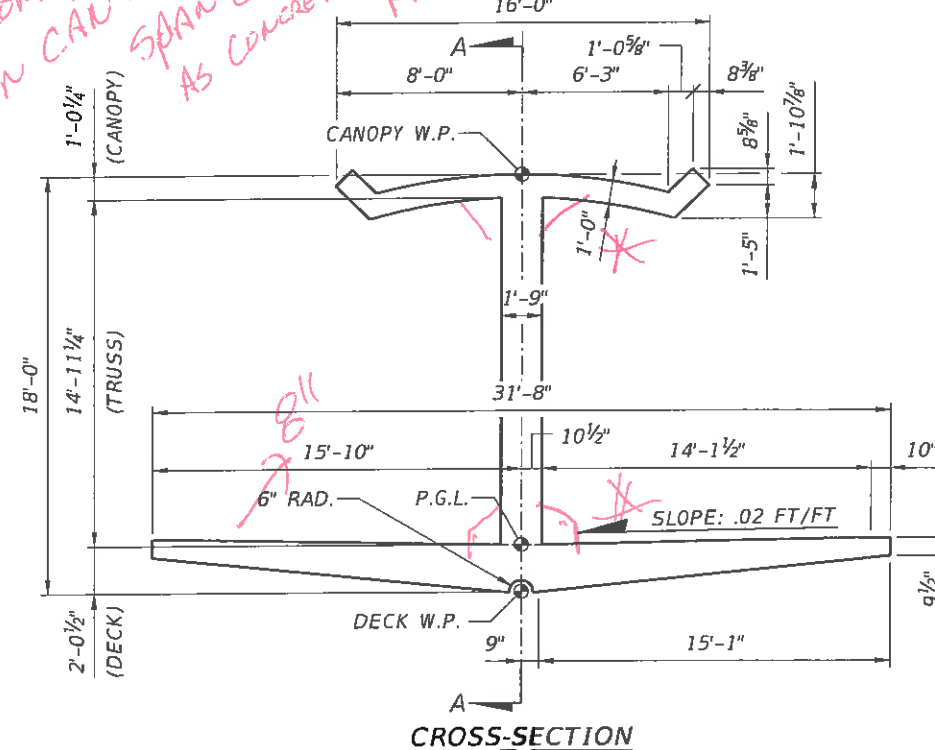
CANOPY W.P.

SYMM. ABOUT C STR
(UNLESS NOTED OTHERWISE)

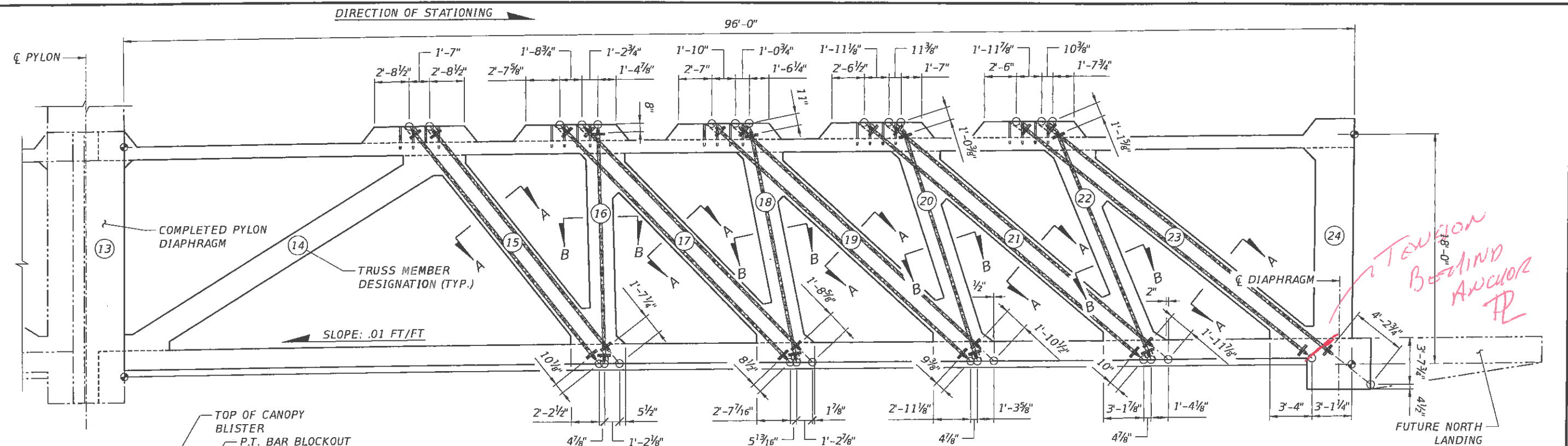
* RECOMMEND CHAINED
END BLOCKS
TO ADDRESS SLOW
LAG @ ANCHORS.

NOTES:

1. APPROXIMATE LIFTING WEIGHT OF TRUSS SYSTEM
SYSTEM = 915 TONS.



REVISIONS						ENGINEER OF RECORD: <div></div> <div>424 North Calhoun Street Tallahassee, Florida 32301</div> <div>FLORIDA CERTIFICATE OF AUTHORIZATION NO. 5618 W. DENNEY PATE, P.E. - P.E. NO. 34332</div>		DRAWN BY: DCB CHECKED BY: MF DESIGNED BY: EDL CHECKED BY: MF			SHEET TITLE: BACK SPAN TRUSS SYSTEM LAYOUT				
DATE	BY	DESCRIPTION	DATE	BY	DESCRIPTION									ROAD NO.	COUNTY



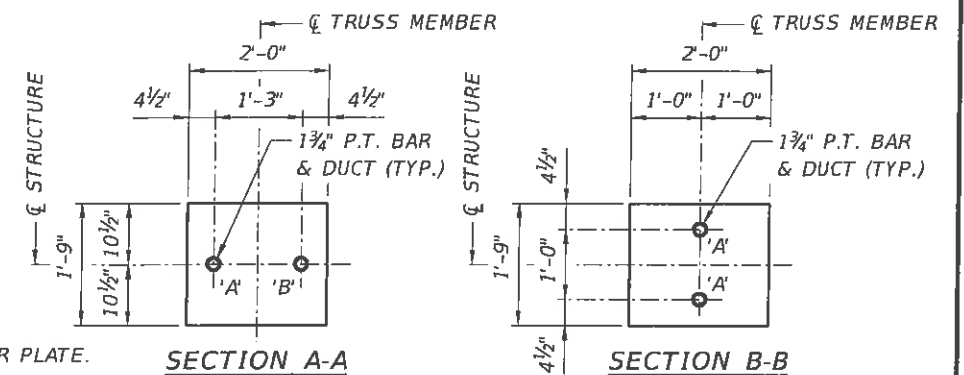
ELEVATION

LENGTH AND RELATED WEIGHT ARE SHOWN ON THE SCHEDULE

THIS LENGTH AND RELATED WEIGHT NOT INCLUDED IN THE SCHEDULE AND SHALL BE INCLUDED IN THE COST OF THE POST-TENSIONING

NOTES:

1. MINIMUM CONCRETE STRENGTH REQUIRED PRIOR TO STRESSING P.T. BARS = 6000 PSI.
2. ALL 1 3/4" DIA. P.T. BARS WILL HAVE AN 8"x12" ANCHOR PLATE.
- ALL 2 1/2" DIA. P.T. BARS WILL HAVE A 12"x14" ANCHOR PLATE.



P.T. BAR ANCHOR DETAIL (TOP ANCHOR)

P.T. BAR ANCHOR DETAIL (BOTTOM ANCHOR)

P.T. BAR SCHEDULE

MEMBER	BAR	BAR SIZE	NO. OF BARS	BAR LENGTH	BAR WEIGHT	TOTAL WEIGHT	JACKING FORCE	BAR ELONGATION
1	'A'	2 1/2"	2	19'-9"				
2	'A'	1 3/4"	1	39'-4 3/4"				
	'B'	1 3/4"	1	42'-11 7/8"				
3	'A'	1 3/4"	2	18'-1 7/8"				
	'B'	1 3/4"	2	18'-1 7/8"				
4	'A'	1 3/4"	1	37'-8 1/4"				
	'B'	1 3/4"	1	39'-6 3/4"				
5	'A'	1 3/4"	2	17'-7 3/8"				
6	'A'	1 3/4"	1	35'-0 3/4"				
	'B'	1 3/4"	1	35'-0 3/4"				
7	'A'	1 3/4"	1	18'-9 3/8"				
	'B'	1 3/4"	1	18'-9 3/8"				
8	'A'	2 1/2"	2	28'-4 1/8"				
	'B'	2 1/2"	2	29'-1 1/8"				
10	'A'	2 1/2"	2	22'-3 3/4"				
	'B'	2 1/2"	2	22'-3 3/4"				

P.T. BAR SCHEDULE (CONT.)

MEMBER	BAR	BAR SIZE	NO. OF BARS	BAR LENGTH	BAR WEIGHT	TOTAL WEIGHT	JACKING FORCE	BAR ELONGATION
15	'A'	1 3/4"	1	22'-3 3/8"				
	'B'	1 3/4"	1	21'-6 3/8"				
16	'A'	1 3/4"	2	17'-6 3/8"				
17	'A'	1 3/4"	1	24'-5 3/8"				
	'B'	1 3/4"	1	23'-5 1/4"				
18	'A'	1 3/4"	2	17'-7 3/8"				
19	'A'	1 3/4"	1	25'-11 1/8"				
	'B'	1 3/4"	1	24'-10"				
20	'A'	1 3/4"	2	18'-0 3/8"				
21	'A'	1 3/4"	1	27'-1 1/4"				
	'B'	1 3/4"	1	25'-11 1/2"				
22	'A'	1 3/4"	2	18'-6 1/2"				
23	'A'	1 3/4"	1	28'-0 3/8"				
	'B'	1 3/4"	1	28'-0 3/8"				

REVISIONS

DATE	BY	DESCRIPTION	DATE	BY	DESCRIPTION

ENGINEER OF RECORD:

FIGG
424 North Calhoun Street
Tallahassee, Florida 32301
FLORIDA CERTIFICATE OF AUTHORIZATION NO. 5618
W. DENNEY PATE, P.E. - P.E. NO. 34332

DRAWN BY:

DCB
CHECKED BY:
MF
DESIGNED BY:
EDL
CHECKED BY:
MF

ROAD NO.	COUNTY	PROJECT ID
	MIAMI-DADE	434688-1-58-01

SHEET TITLE:

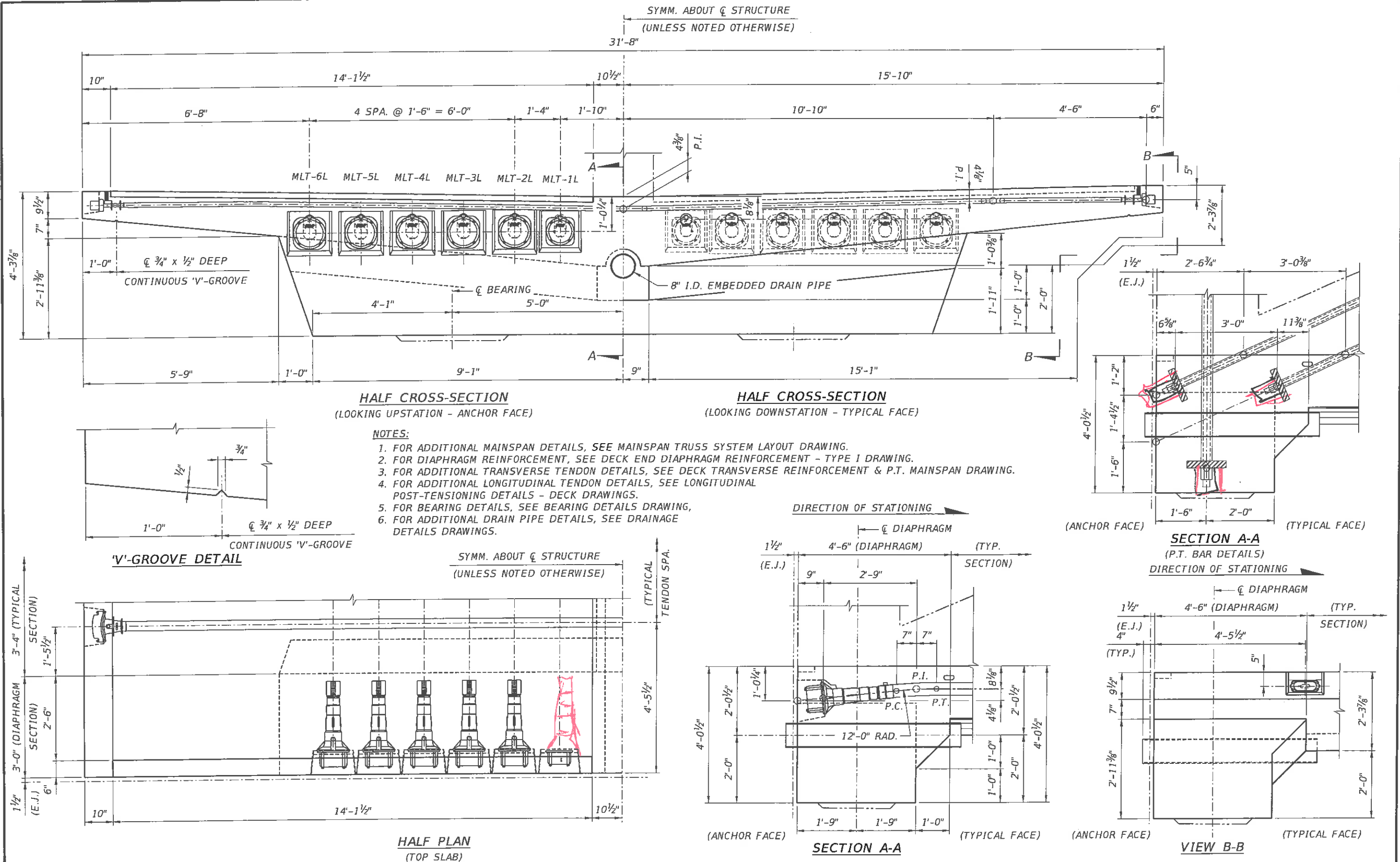
BACK SPAN TRUSS SYSTEM P.T. BAR DETAILS

PROJECT NAME:

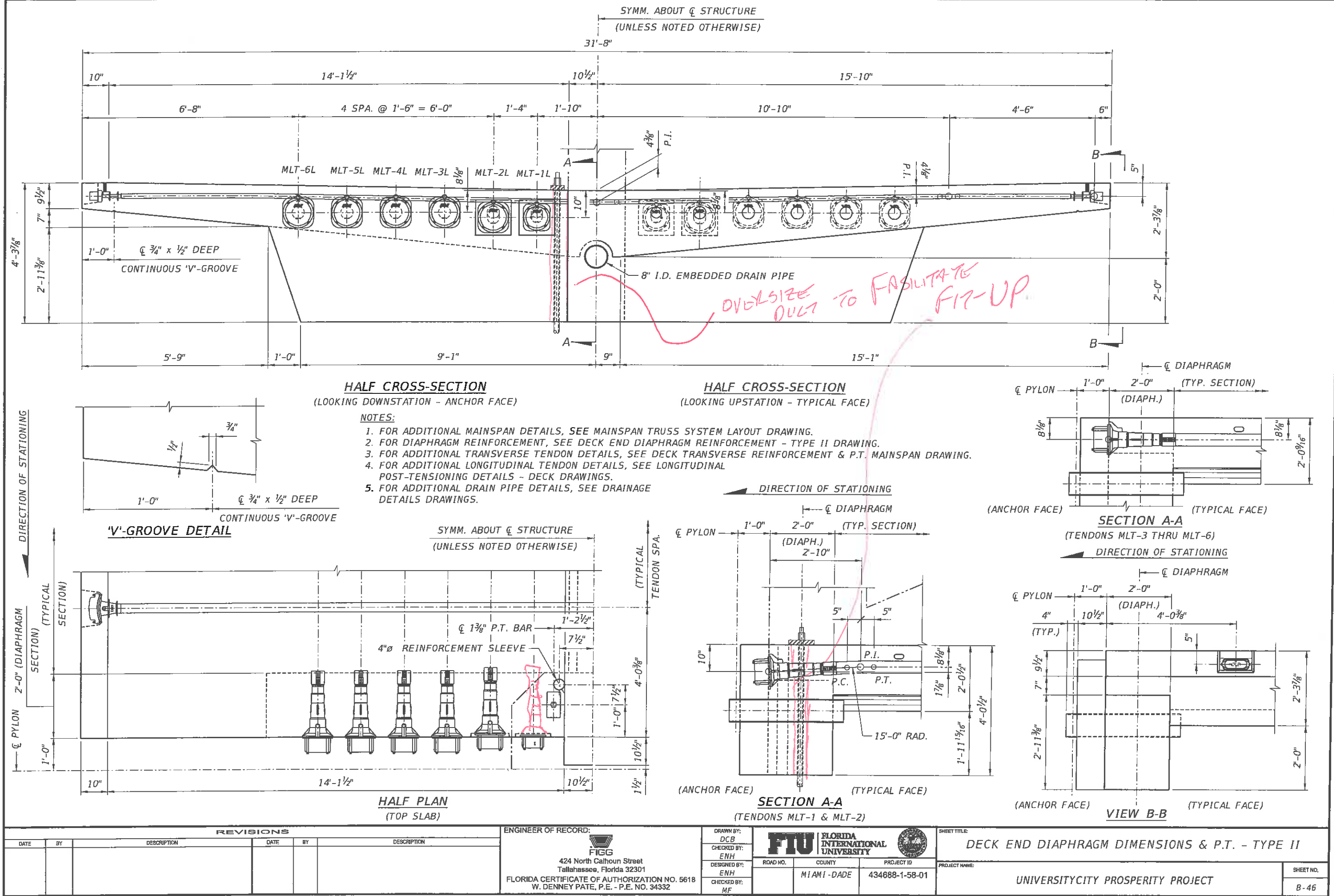
UNIVERSITYCITY PROSPERITY PROJECT

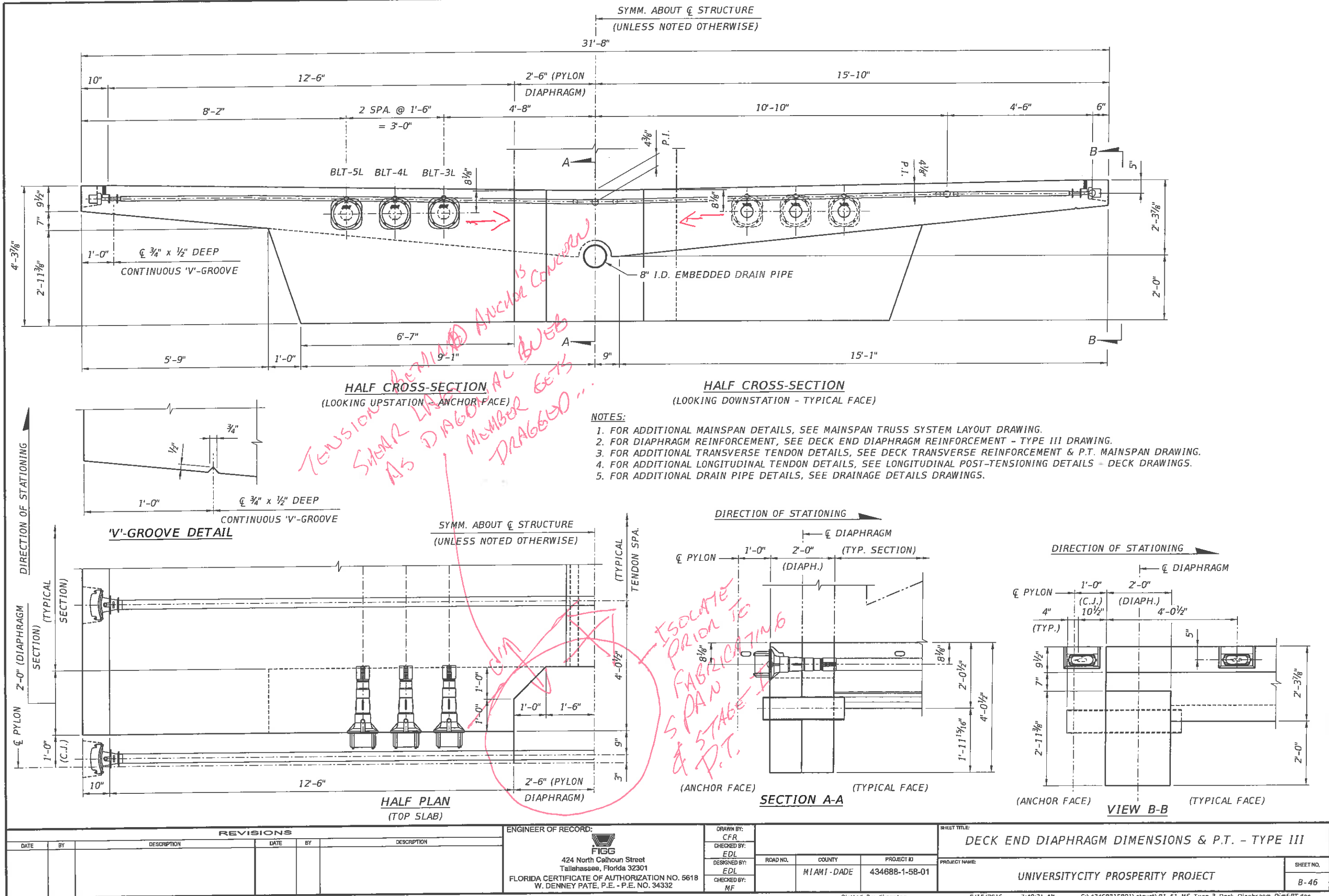
SHEET NO.

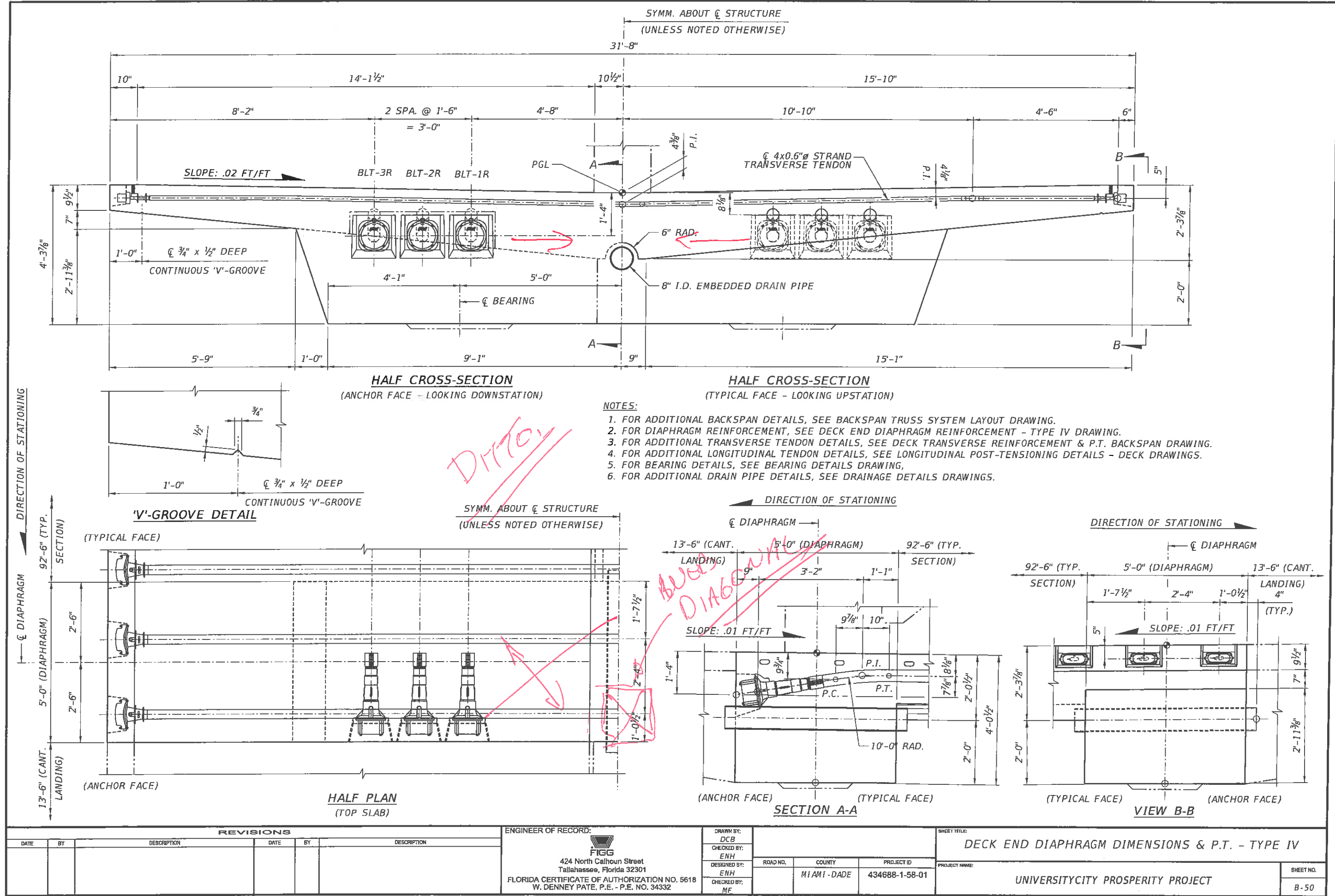
B-41

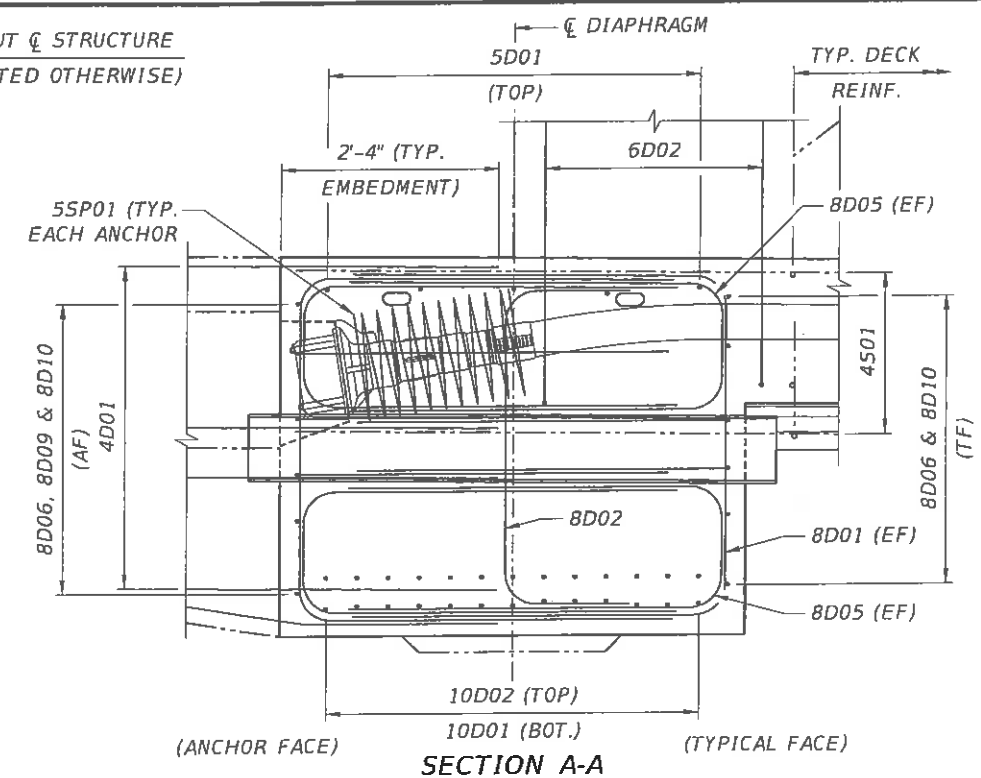
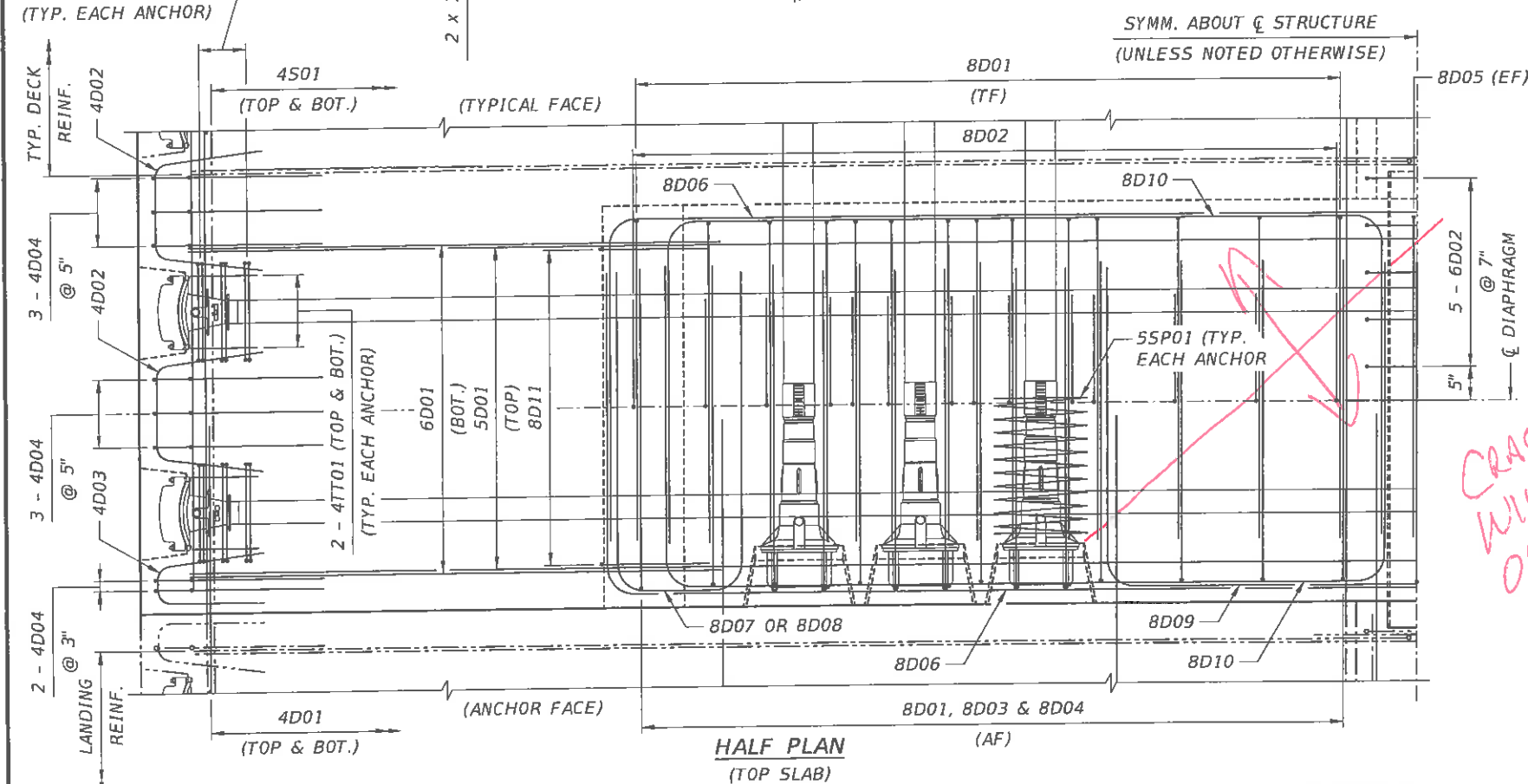
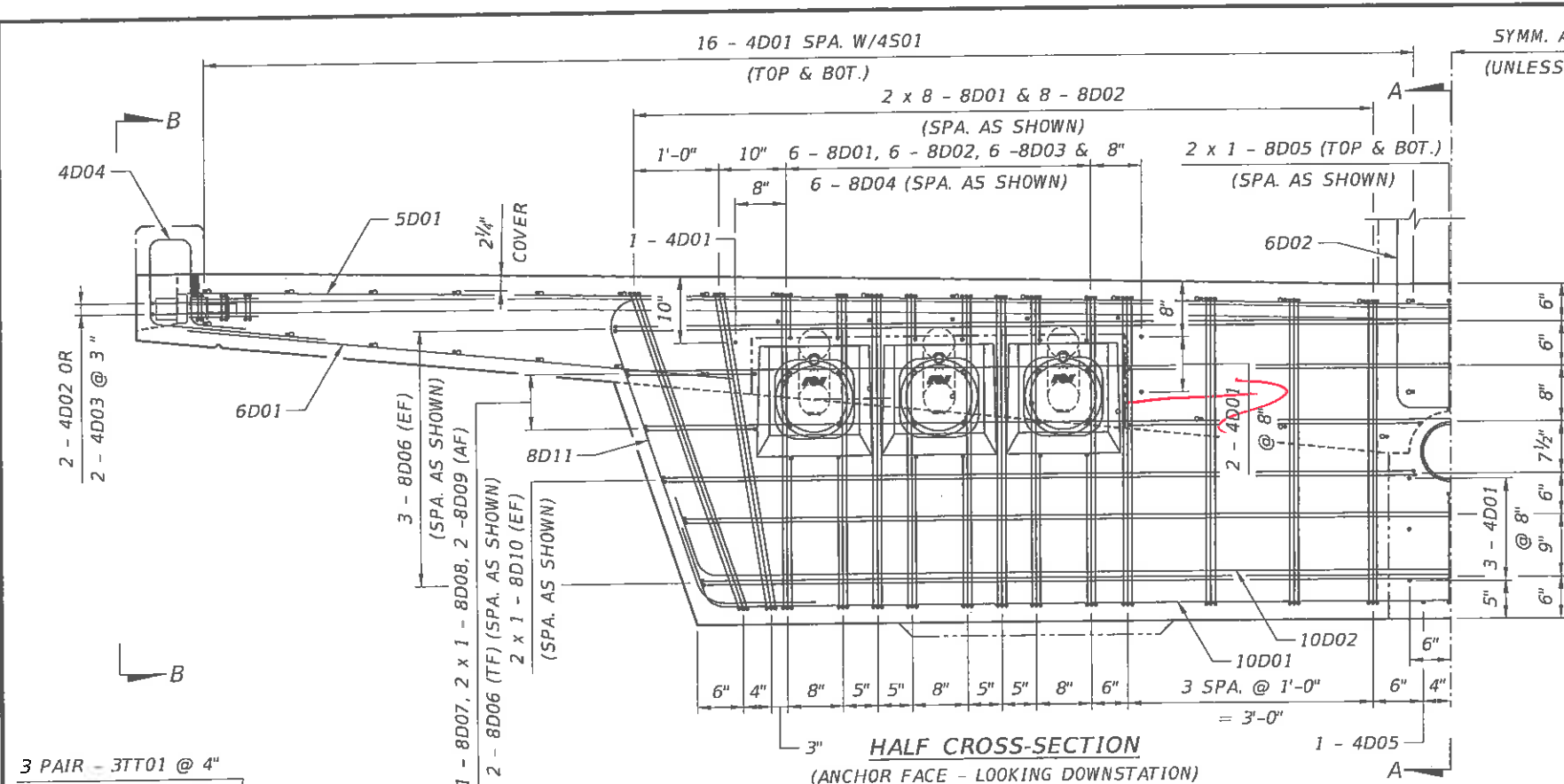


REVISIONS						ENGINEER OF RECORD:		DRAWN BY:		SHEET TITLE:	
DATE	BY	DESCRIPTION	DATE	BY	DESCRIPTION	FIGG		DCB		DECK END DIAPHRAGM DIMENSIONS & P.T. - TYPE I	
						424 North Calhoun Street Tallahassee, Florida 32301		ENH		UNIVERSITYCITY PROSPERITY PROJECT	
						FLORIDA CERTIFICATE OF AUTHORIZATION NO. 5618 W. DENNEY PATE, P.E. - P.E. NO. 34332		ENH		PROJECT NAME:	
								MF		PROJECT NO. 434688-1-58-01	
										SHEET NO. B-44	

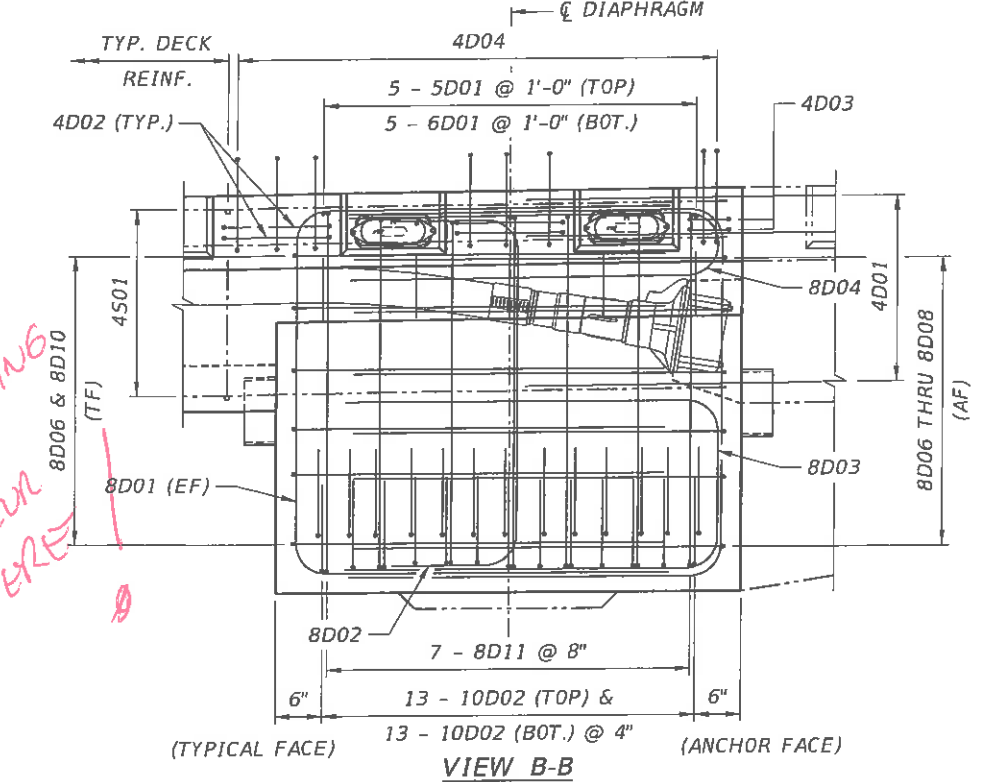









- NOTES:
1. CONCRETE COVER IS 2" UNLESS OTHERWISE NOTED.
 2. FOR BAR LIST, SEE SUPERSTRUCTURE REINFORCEMENT BAR LIST DRAWINGS.
 3. FOR TYPICAL DECK REINFORCEMENT, SEE BACKSPAN DECK REINFORCEMENT DRAWING.
 4. FOR LANDING REINFORCEMENT, SEE NORTH LANDING REINFORCEMENT DRAWING.
 5. AF DENOTES ANCHOR FACE.
 - EF DENOTES EACH FACE.
 - TF DENOTES TYPICAL FACE.



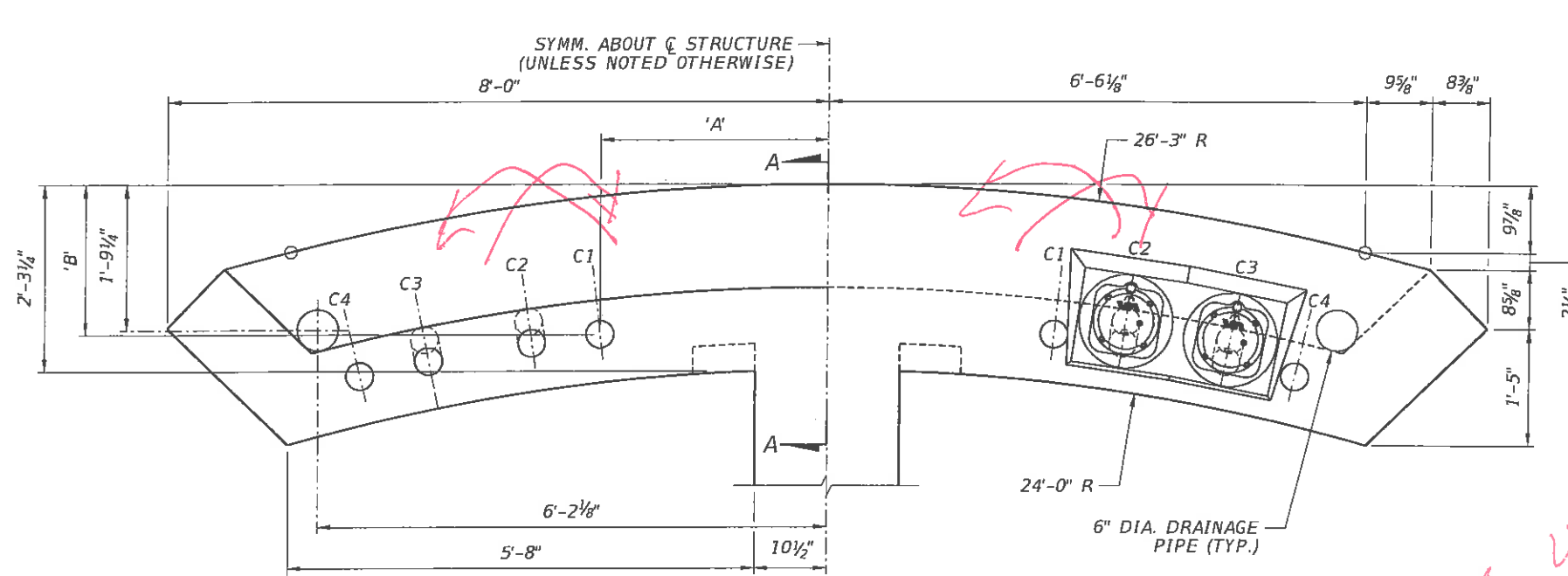
REVISIONS						<div>ENGINEER OF RECORD:</div> <div></div> <div>424 North Calhoun Street Tallahassee, Florida 32301</div> <div>FLORIDA CERTIFICATE OF AUTHORIZATION NO. 5618 W. DENNEY PATE, P.E. - P.E. NO. 34332</div>	DRAWN BY: DCB			SHEET TITLE: MAIN SPAN END DIAPHRAGM REINFORCEMENT I - TYPE IV		
DATE	BY	DESCRIPTION	DATE	BY	DESCRIPTION		CHECKED BY: ENH					
DATE	BY	DESCRIPTION	DATE	BY	DESCRIPTION		DESIGNED BY: ENH	ROAD NO.	COUNTY	PROJECT ID	PROJECT NAME:	SHEET NO.
DATE	BY	DESCRIPTION	DATE	BY	DESCRIPTION		CHECKED BY: MF		MIAMI - DADE	434688-1-58-01	UNIVERSITYCITY PROSPERITY PROJECT	B-54
DATE	BY	DESCRIPTION	DATE	BY	DESCRIPTION							

Plotted By: dbrewton

9/14/2016

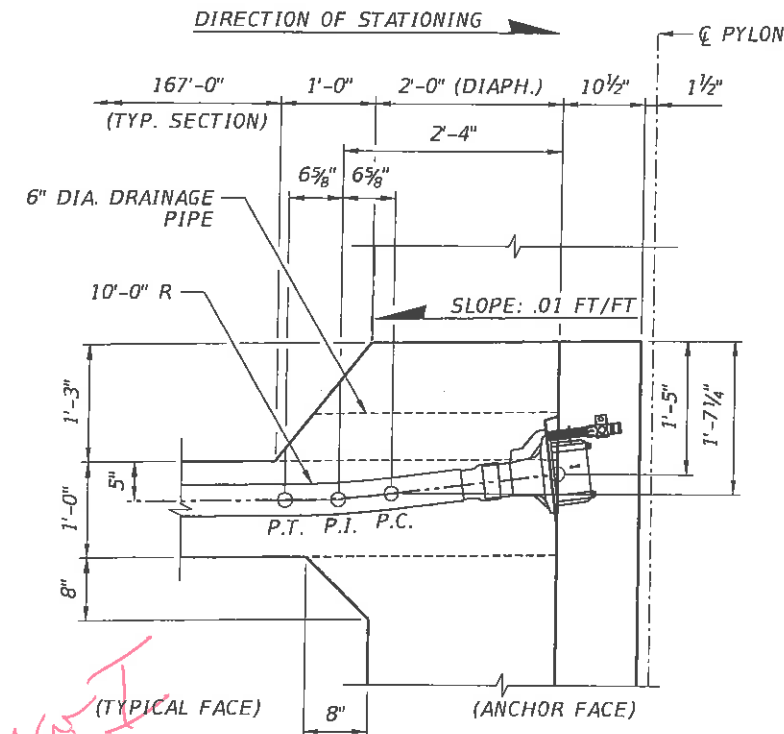
7:26:54 PM

G:\434688\15801\struct\B1_54_MS_Type 4_Deck_Diaphragm_Reinf.dgn



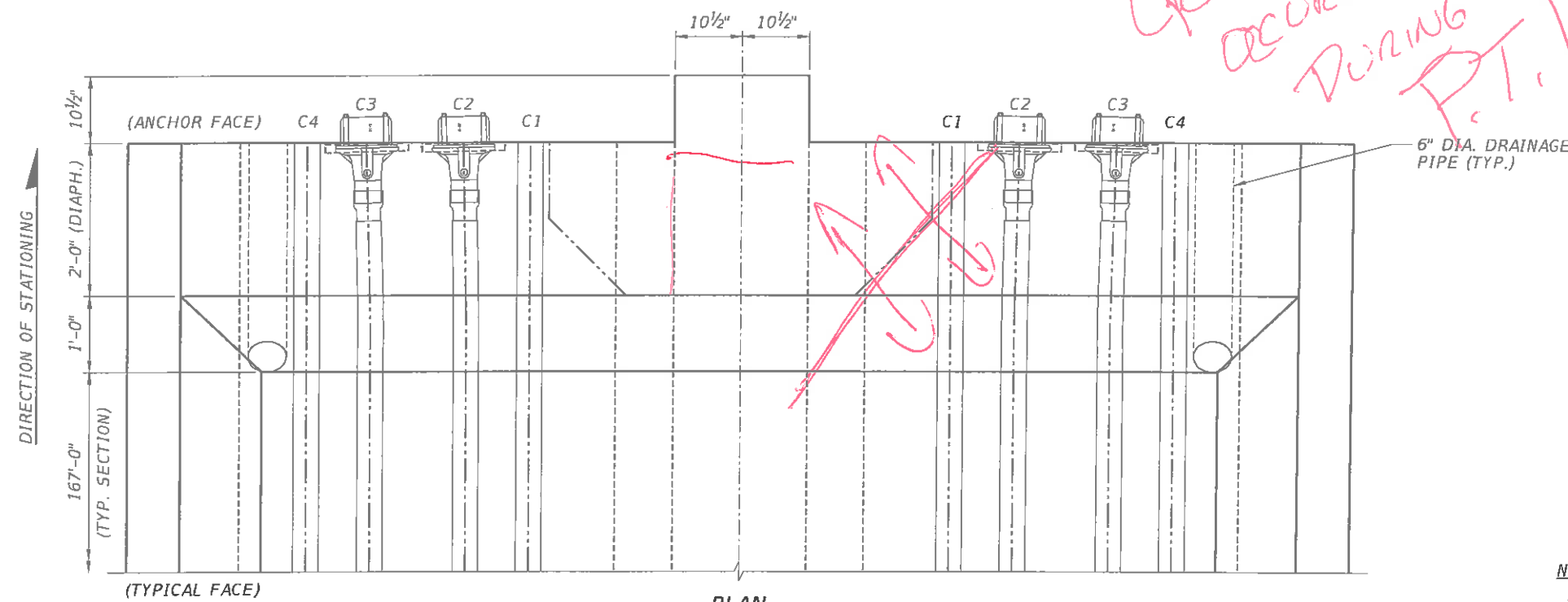
HALF CROSS-SECTION
(TYPICAL FACE - LOOKING UPSTATION)

HALF CROSS-SECTION
(ANCHOR FACE - LOOKING DOWNSTATION)



SECTION A-A

CRACKING WILL
OCCUR HERE
DURING PHASE I
P.T.!!

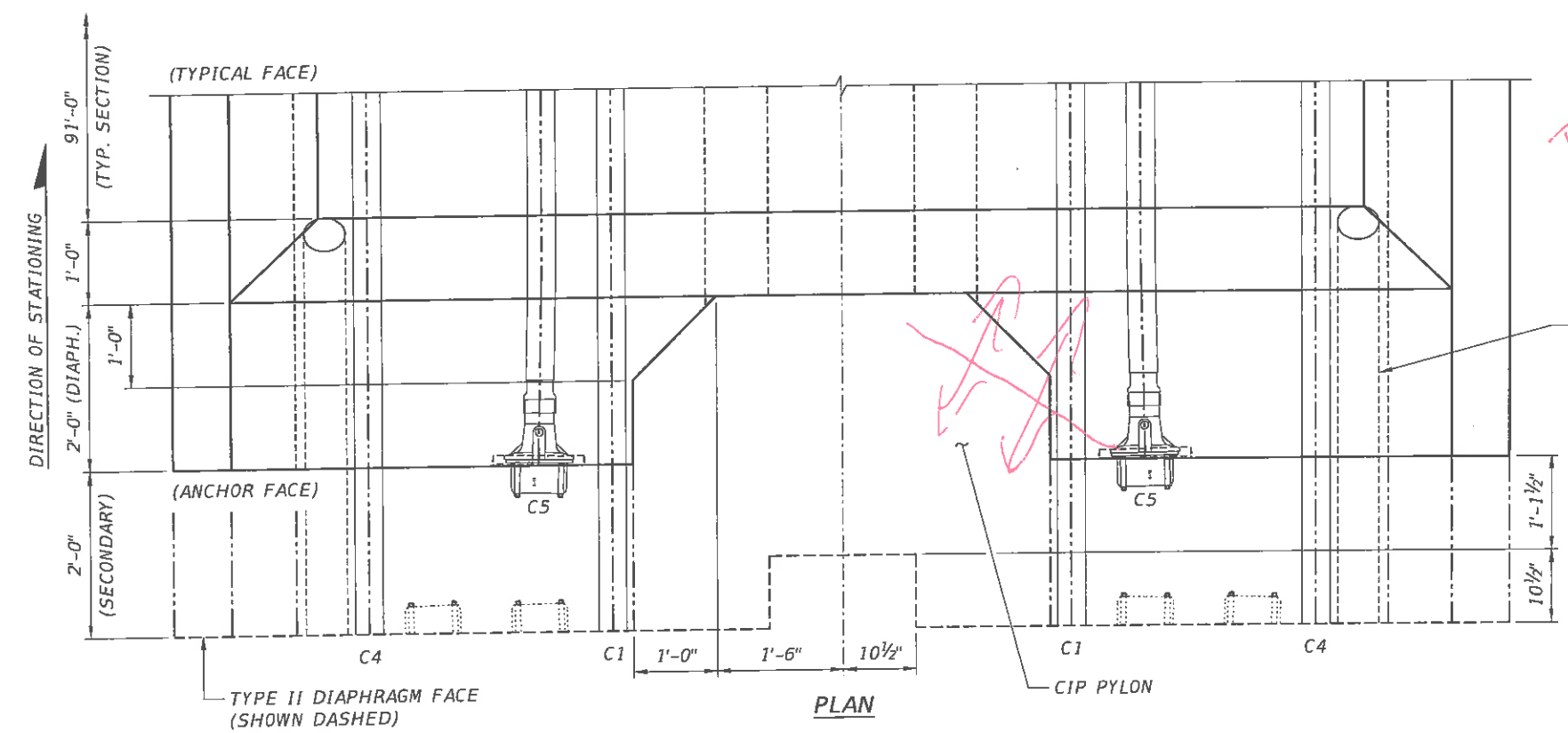
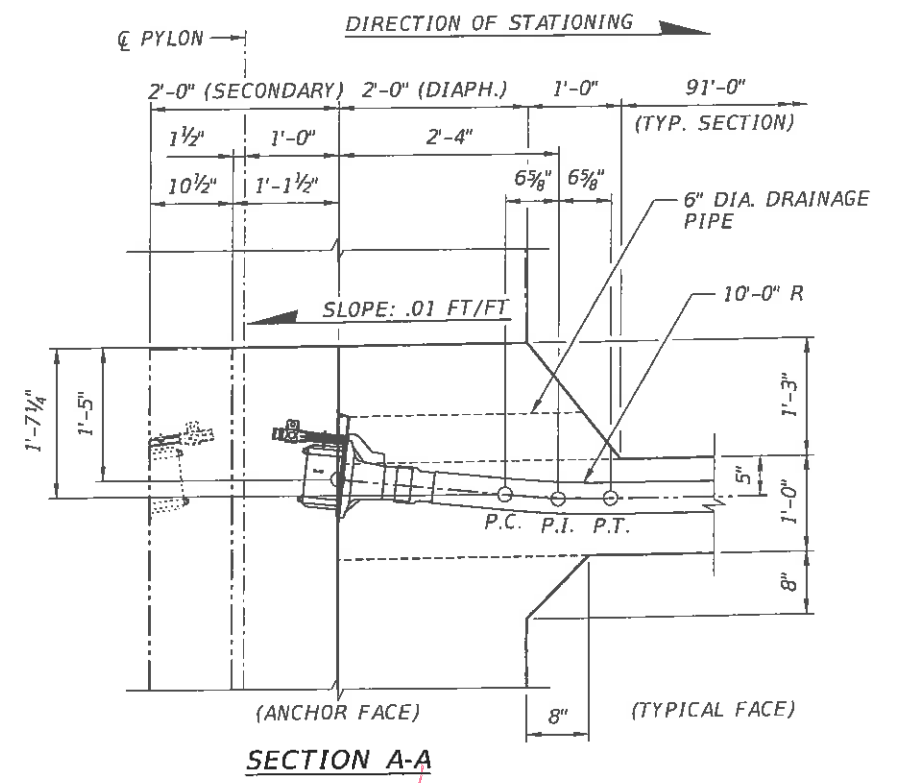
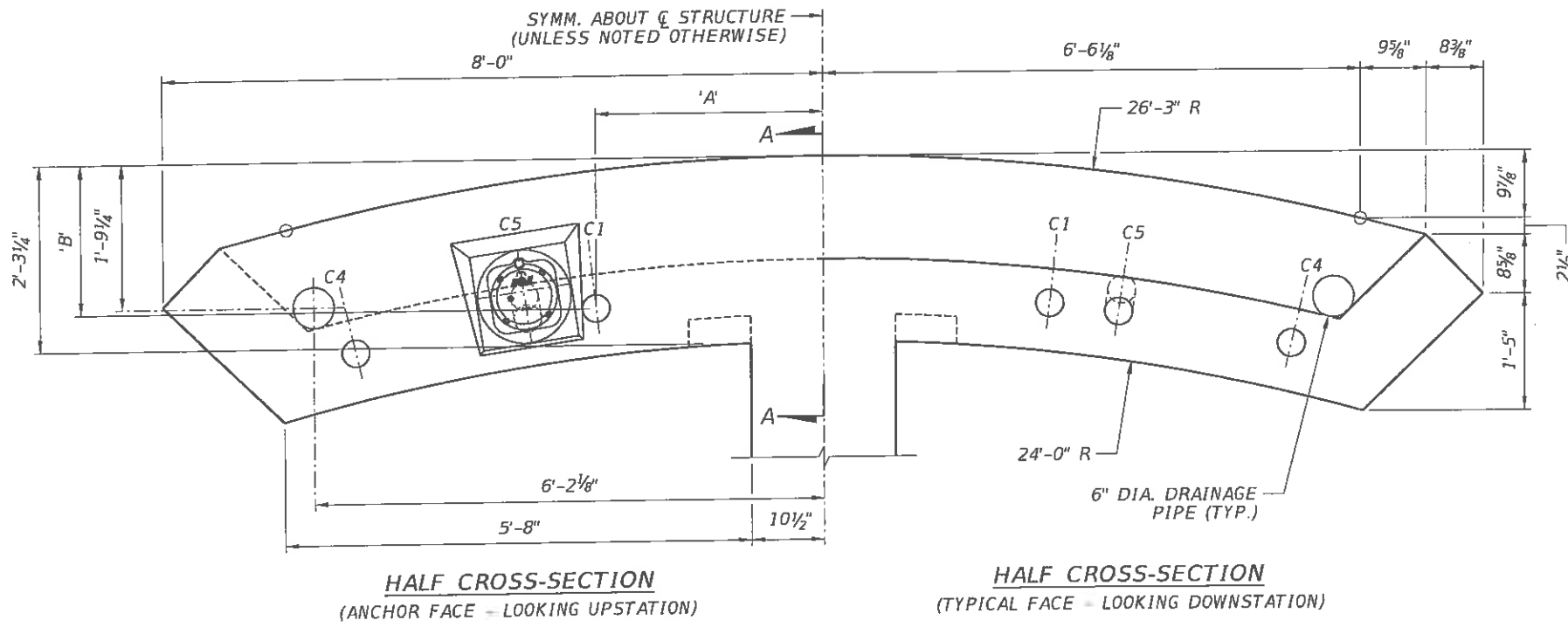


PLAN

TENDON DIMENSIONS		
TENDON	'A'	'B'
ANCHOR FACE	C1	2'-9"
	C2	3'-7 1/2"
	C3	4'-10 5/8"
	C4	5'-8"
TYPICAL FACE	C1	2'-9"
	C2	3'-7"
	C3	4'-10"
	C4	5'-8"

- NOTES:
1. FOR ADDITIONAL MAIN SPAN DETAILS, SEE MAIN SPAN TRUSS SYSTEM LAYOUT DRAWINGS.
 2. FOR DIAPHRAGM REINFORCEMENT, SEE CANOPY END DIAPHRAGM REINFORCEMENT - TYPE II DRAWING.
 3. FOR ADDITIONAL LONGITUDINAL TENDON DETAILS, SEE LONGITUDINAL POST-TENSIONING DETAILS I DRAWING.
 4. FOR ADDITIONAL DRAINAGE PIPE DETAILS, SEE DRAINAGE DETAILS DRAWING.

REVISIONS				ENGINEER OF RECORD:				DRAWN BY:				SHEET TITLE:					
DATE	BY	DESCRIPTION	DATE	BY	DESCRIPTION	FIGS 424 North Calhoun Street Tallahassee, Florida 32301 FLORIDA CERTIFICATE OF AUTHORIZATION NO. 5818 W. DENNEY PATE, P.E. - P.E. NO. 34332				KJM CHECKED BY: ENH DESIGNED BY: ENH CHECKED BY: MF				CANOPY END DIAPHRAGM DIMENSIONS & P.T. - TYPE II			
								ROAD NO. COUNTY PROJECT ID				PROJECT NAME				SHEET NO.	
								MIAMI - DADE 434688-1-58-01				UNIVERSITYCITY PROSPERITY PROJECT				B-54	
								SUSERS SDATES \$TIMES \$FILES									

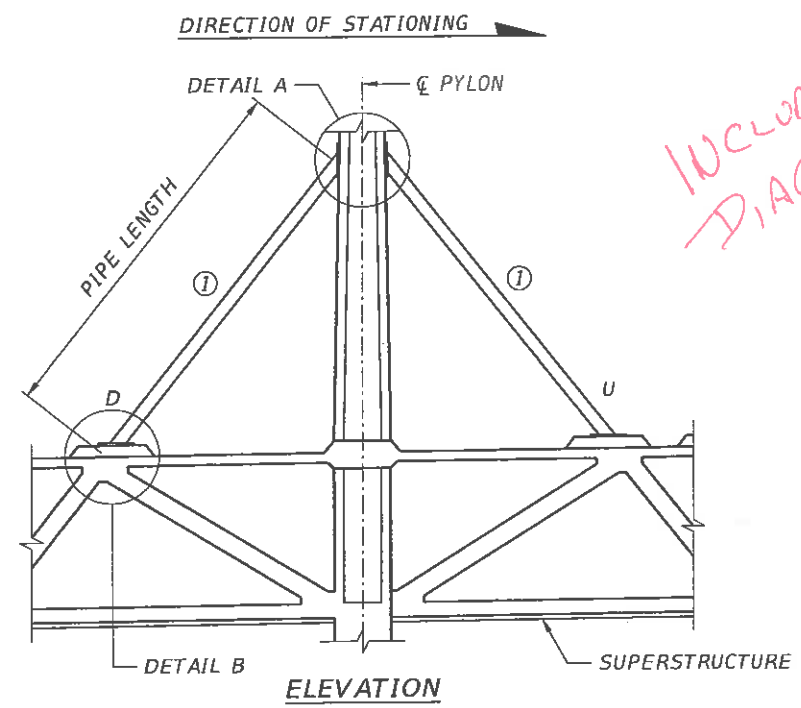


DRMO, ISOCATE PYLON... DURING A STAGE I STRESSING.

TENDON DIMENSIONS			
	TENDON	'A'	'B'
TYPICAL ANCHOR FACE	C1	2'-9"	1'-9 7/8"
	C5	3'-7 1/2"	1'-8"
	C4	5'-8"	2'-4"
TYPICAL ANCHOR FACE	C1	2'-9"	1'-9 7/8"
	C5	3'-7"	1'-11 1/8"
	C4	5'-8"	2'-4"

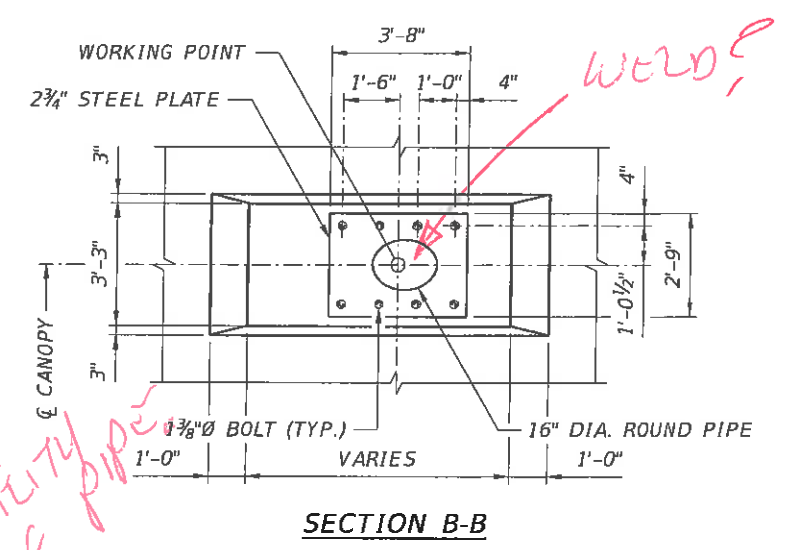
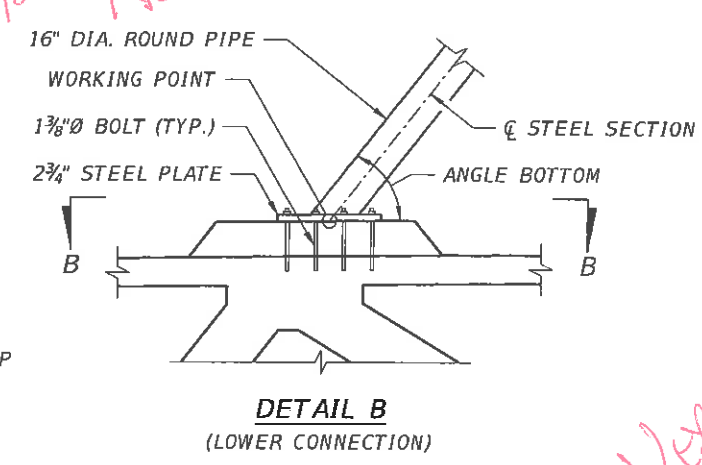
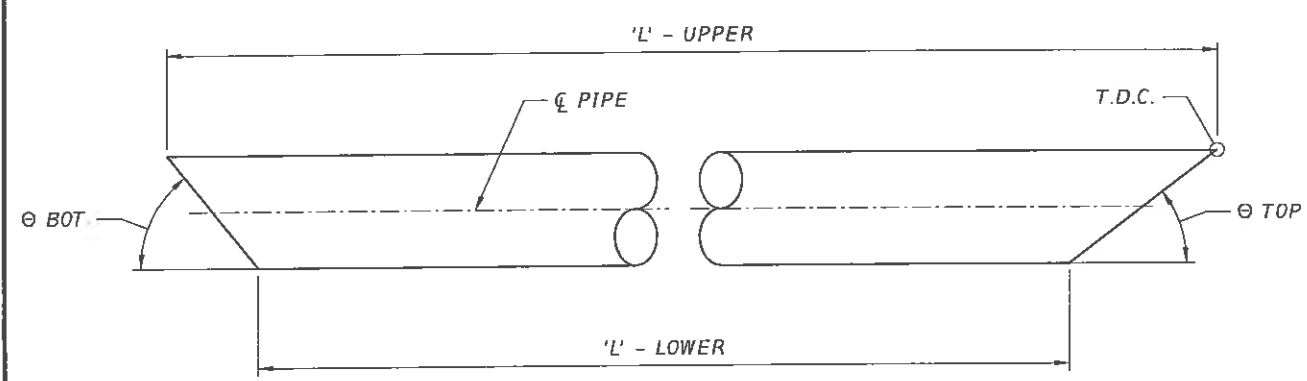
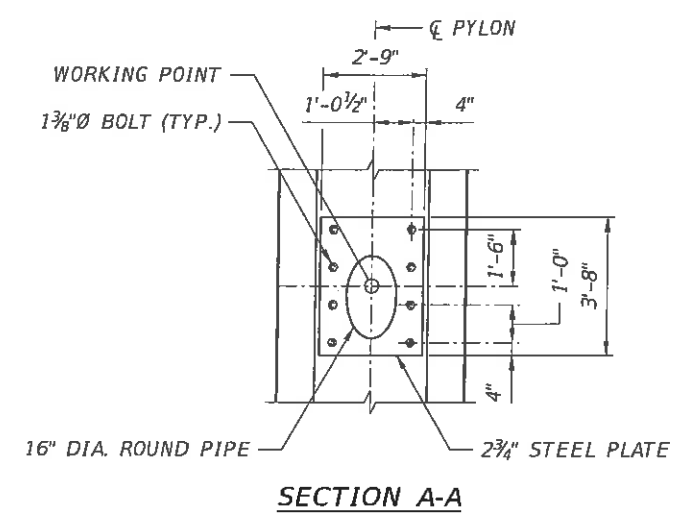
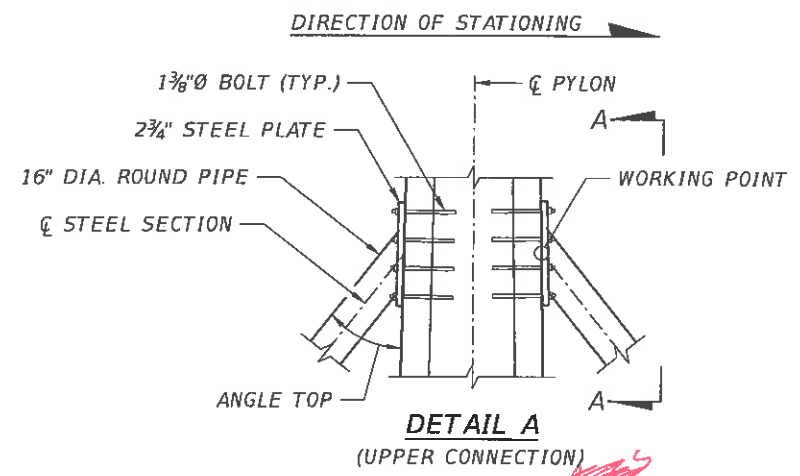
- NOTES:
1. FOR ADDITIONAL BACK SPAN DETAILS, SEE BACK SPAN TRUSS SYSTEM LAYOUT DRAWINGS.
 2. FOR DIAPHRAGM REINFORCEMENT, SEE CANOPY END DIAPHRAGM REINFORCEMENT - TYPE III DRAWING.
 3. FOR ADDITIONAL LONGITUDINAL TENDON DETAILS, SEE LONGITUDINAL POST-TENSIONING DETAILS II DRAWING.
 4. FOR ADDITIONAL DRAINAGE PIPE DETAILS, SEE DRAINAGE DETAILS DRAWING.

REVISIONS				ENGINEER OF RECORD:		DRAWN BY:		SHEET TITLE:	
DATE	BY	DESCRIPTION	DATE	BY	DESCRIPTION	KJM	FIU	CANOPY END DIAPHRAGM DIMENSIONS & P.T. - TYPE III	
						ENH	FLORIDA INTERNATIONAL UNIVERSITY		
						ENH	ROAD NO. COUNTY PROJECT ID	UNIVERSITYCITY PROSPERITY PROJECT	
						MF	MIAMI - DADE 434688-1-58-01	SHEET NO. B-56	



INCLUDE CAMBER DIAGRAMS.

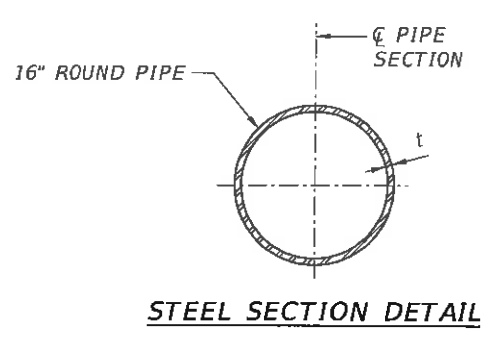
INCLUDE HIGH PERFORMANCE PAINTING SYSTEM GENERAL NOTE.



Verify AVAILABILITY of PIPE

- NOTES:
1. ALL PIPES ARE STEEL 16" DIAMETER WITH A 1.43" WALL THICKNESS.
 2. STEEL PLATES ARE CENTERED ON EACH PLATE WORKING POINT.
 3. GROUT SHALL BE PREPACKAGED AND BE COMPOSED OF PORTLAND CEMENT AND SILICA SAND. MINIMUM COMPRESSIVE STRENGTH SHALL BE 8,500 PSI.
 4. USE TEMPLATE TO INSURE BOLT POSITIONS/ALIGNMENT DURING CONCRETE PLACEMENT.
 5. ANCHOR BOLTS FOR SUPPORT PIPE CONNECTIONS SHALL BE ASTM F1554 GRADE 105 WITH ASTM A563 HEAVY-HEX NUTS AND PLATE WASHER, GALVANIZED NUTS, BOLTS AND WASHERS IN ACCORDANCE WITH ASTM F2329. LENGTH OF BOLT IS EQUAL TO 30".
 6. PIPE SUPPORT STEEL PLATE SHALL BE GRADE 36.
 7. DURING BEARING REPLACEMENT, UBBOLT THE BOTTOM STAY PIPE CONNECTION PRIOR TO JACKING THE SPAN.
 8. T.D.C. - TOP DEAD CENTER REPRESENTS THE LONGEST LENGTH OF PIPE.

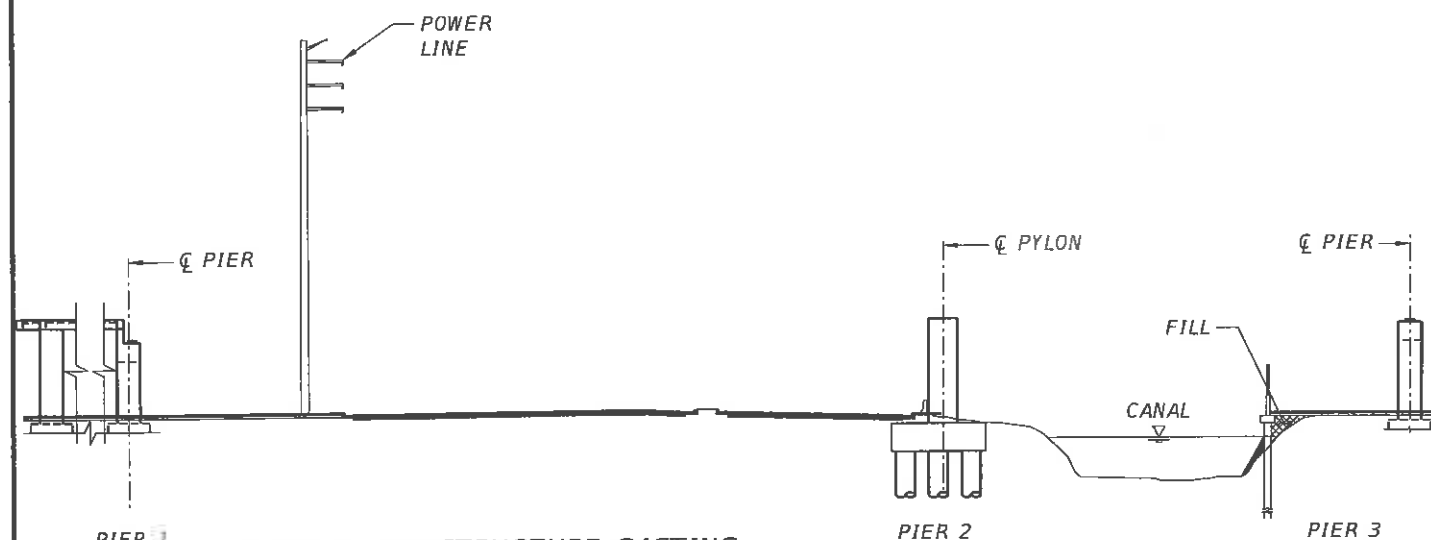
PIPE SUPPORT GEOMETRY				
PIPE	LENGTH - UPPER	LENGTH - LOWER	ANGLE TOP	ANGLE BOTT.
1U	38'-3"	35'-5 5/8"	37.53°	51.35°
2U	51'-4 3/4"	48'-8 1/2"	43.05°	45.82°
3U	64'-8 1/2"	62'-0 1/8"	46.51°	42.37°
4U	78'-1 1/2"	75'-4 7/8"	48.86°	40.02°
5U	91'-7 3/8"	88'-10 3/8"	50.55°	38.32°
1D	38'-7 1/2"	35'-9 1/2"	37.09°	51.79°
2D	63'-3 7/8"	60'-5 5/8"	51.63°	37.25°
3D	89'-6 1/2"	86'-5"	58.31°	30.56°
4D	116'-5 1/2"	113'-0 1/2"	62.06°	26.82°
5D	143'-8 3/8"	140'-0 1/2"	64.43°	24.45°



STEEL SECTION DETAIL

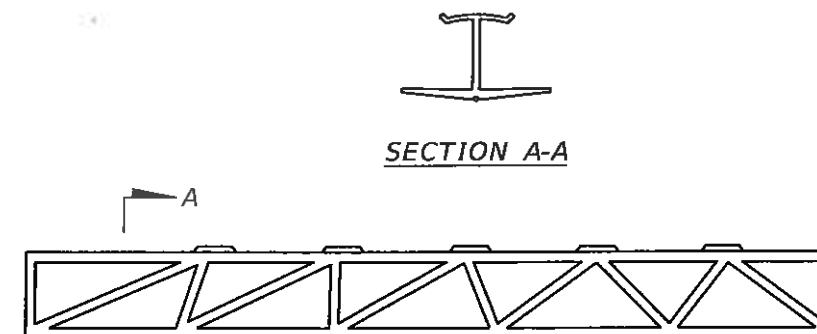
REVISIONS				ENGINEER OF RECORD:		DRAWN BY:		SHEET TITLE:	
DATE	BY	DESCRIPTION	DATE	BY	DESCRIPTION	LTC	FLUOR	PIPE SUPPORT DETAILS I	
						EDL	FLUOR		
						EDL	FLUOR		
						MF	FLUOR		
424 North Calhoun Street Tallahassee, Florida 32301 FLORIDA CERTIFICATE OF AUTHORIZATION NO. 5618 W. DENNEY PATE, P.E. - P.E. NO. 34332						ROAD NO. COUNTY PROJECT ID MIAMI - DADE 434688-1-58-01		PROJECT NAME: UNIVERSITYCITY PROSPERITY PROJECT SHEET NO. B-67	
Plotted By: dbrewton 9/14/2016 8:42:17 PM W:\Projects\FIU\struct\B1_67_Stay_CableDetails_1.dgn									

90% SUBMITTAL - NOT FOR CONSTRUCTION - SEPTEMBER 2016



STAGE 1 - SUBSTRUCTURE CASTING

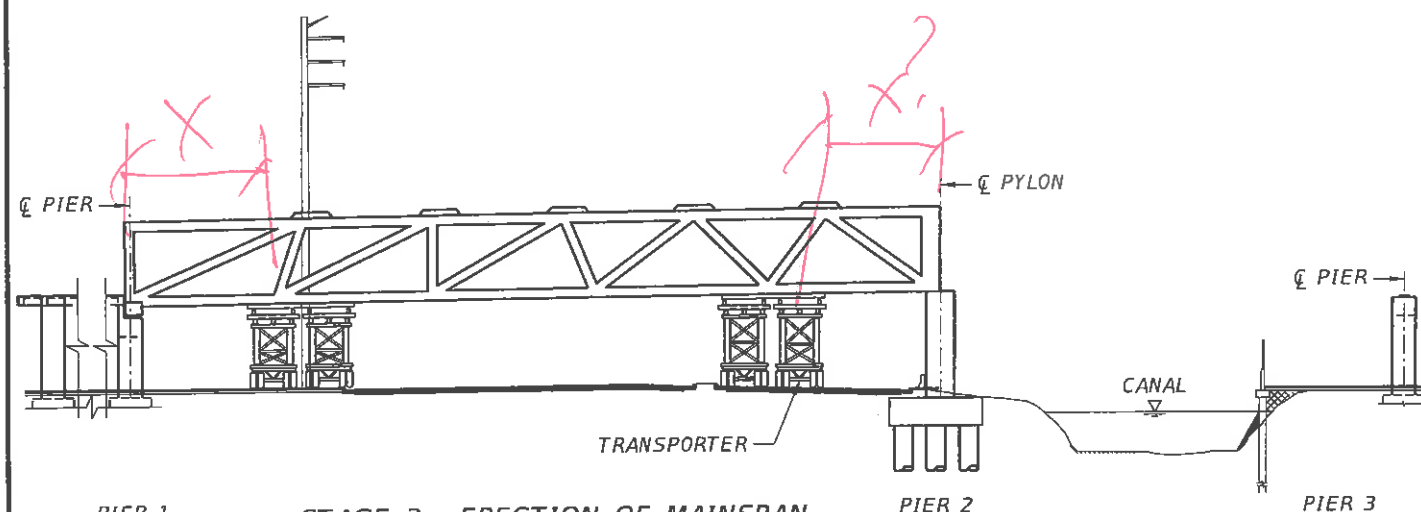
1. BUILD PIER 1 AND PIER 3 FOOTINGS AT THE SOUTH AND NORTH LANDINGS
2. BUILD PYLON FOOTING AND BASE OF PYLON
3. CAST THE END BENTS FOR BOTH LANDINGS.



MAINSPAN

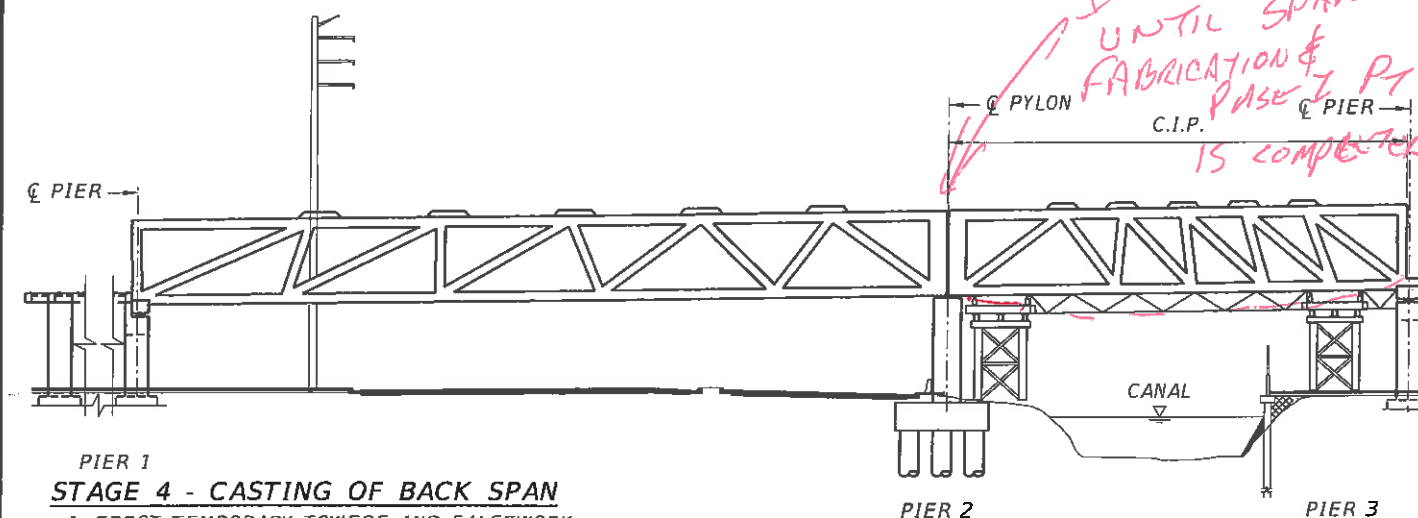
STAGE 2 - SUPERSTRUCTURE PRE-CASTING

1. CAST MAIN SPAN SUPERSTRUCTURE AS FOLLOWS:
 - A) CAST DECK AND DIAPHRAGMS
 - B) CAST DIAGONAL AND VERTICAL MEMBERS WITH PT BARS.
 - C) CAST CANOPY AND TOP ANCHOR BLOCKS.
2. AFTER CONCRETE COMPRESSIVE STRENGTH HAS REACHED 6000 PSI, STRESS ALL PT BARS IN THE DIAGONAL AND VERTICAL MEMBERS.
3. STRESS BOTTOM SLAB TRANSVERSE POST-TENSIONING. ALTERNATED END STRESSING IS REQUIRED FOR THE TRANSVERSE TENDONS.
4. STRESS DECK LONGITUDINAL TENDONS IN THE FOLLOWING SEQUENCE: D1, D2, D3, D4, D5, & D6
5. STRESS CANOPY LONGITUDINAL TENDONS IN THE FOLLOWING SEQUENCE: C2 AND C3



STAGE 3 - ERECTION OF MAINSPAN

1. INSTALL BEARING PADS AT PIER 1 AND SHIM PLATE AT THE PYLON BASE.
2. MOVE MAIN SPAN FROM THE STAGING AREA TO FINAL POSITION.
3. GROUT SPACE BETWEEN PRECAST SECTION DIAPHRAGM AND PYLON BASE.
4. STRESS PYLON VERTICAL PT BARS.



PIER 1

STAGE 4 - CASTING OF BACK SPAN

1. ERECT TEMPORARY TOWERS AND FALSEWORK.
2. ~~INSTALL BEARING PADS AT END BENT 3.~~
3. CAST INTERMEDIATE SECTION OF THE PYLON
4. CAST DECK, DIAGONAL MEMBER, VERTICAL MEMBERS, CANOPY AND TOP ANCHOR BLOCKS.
5. AFTER CONCRETE COMPRESSIVE STRENGTH HAS REACHED 6000 PSI, STRESS ALL PT BARS IN THE DIAGONAL AND VERTICAL MEMBERS.
6. STRESS BOTTOM SLAB TRANSVERSE POST-TENSIONING. ALTERNATED END STRESSING IS REQUIRED FOR THE TRANSVERSE TENDONS.
7. STRESS DECK LONGITUDINAL TENDONS IN THE FOLLOWING SEQUENCE: D7, D8, & D9
8. STRESS CANOPY LONGITUDINAL TENDON: C5
9. REMOVE FALSEWORK OVER THE CANAL.

ISOLATE UNTIL SPAN FABRICATION & PT STRESS IS COMPLETED

REVISIONS					
DATE	BY	DESCRIPTION	DATE	BY	DESCRIPTION

ENGINEER OF RECORD:



424 North Calhoun Street
Tallahassee, Florida 32301
FLORIDA CERTIFICATE OF AUTHORIZATION NO. 5818
W. DENNEY PATE, P.E. - P.E. NO. 34332

DRAWN BY:
LTC
CHECKED BY:
MF
DESIGNED BY:
MF
CHECKED BY:
WDP

ROAD NO. COUNTY PROJECT ID
MIAMI-DADE 434688-1-58-01

SHEET TITLE:

ERECTION SEQUENCE I

PROJECT NAME:

UNIVERSITYCITY PROSPERITY PROJECT

SHEET NO.

B-106

Plotted By: dbrewton

9/15/2016

8:23:56 AM

G:\434688\5801\struct\B1_102_Constr_Seq_1.DGN

90% SUBMITTAL - NOT FOR CONSTRUCTION - SEPTEMBER 2016