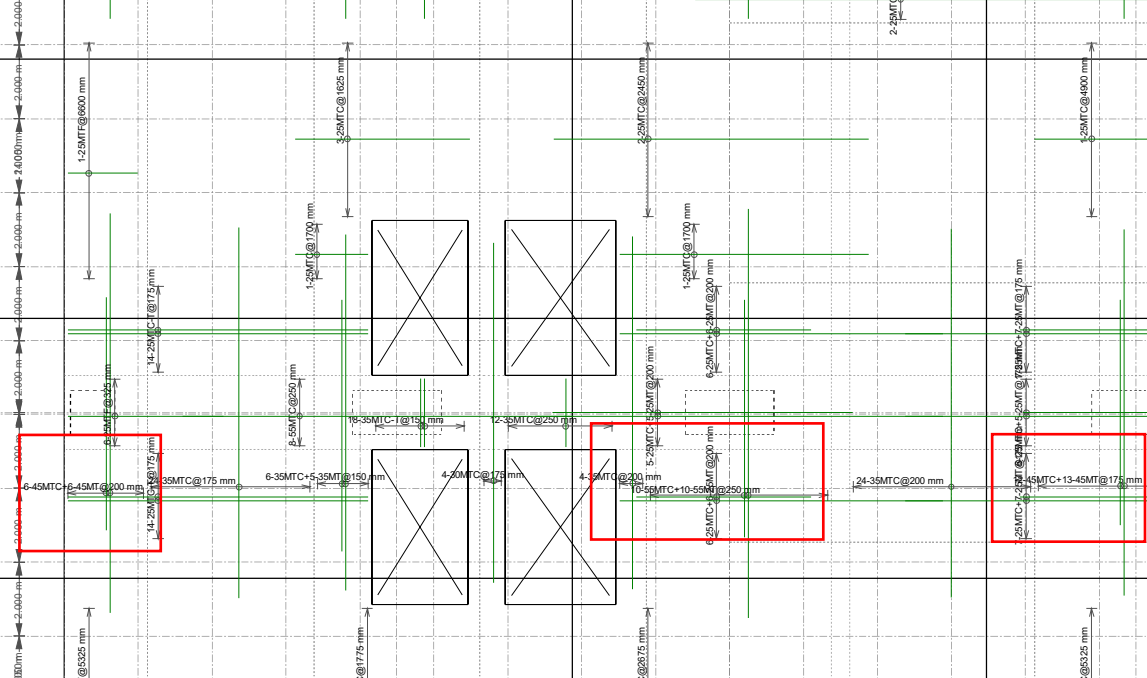


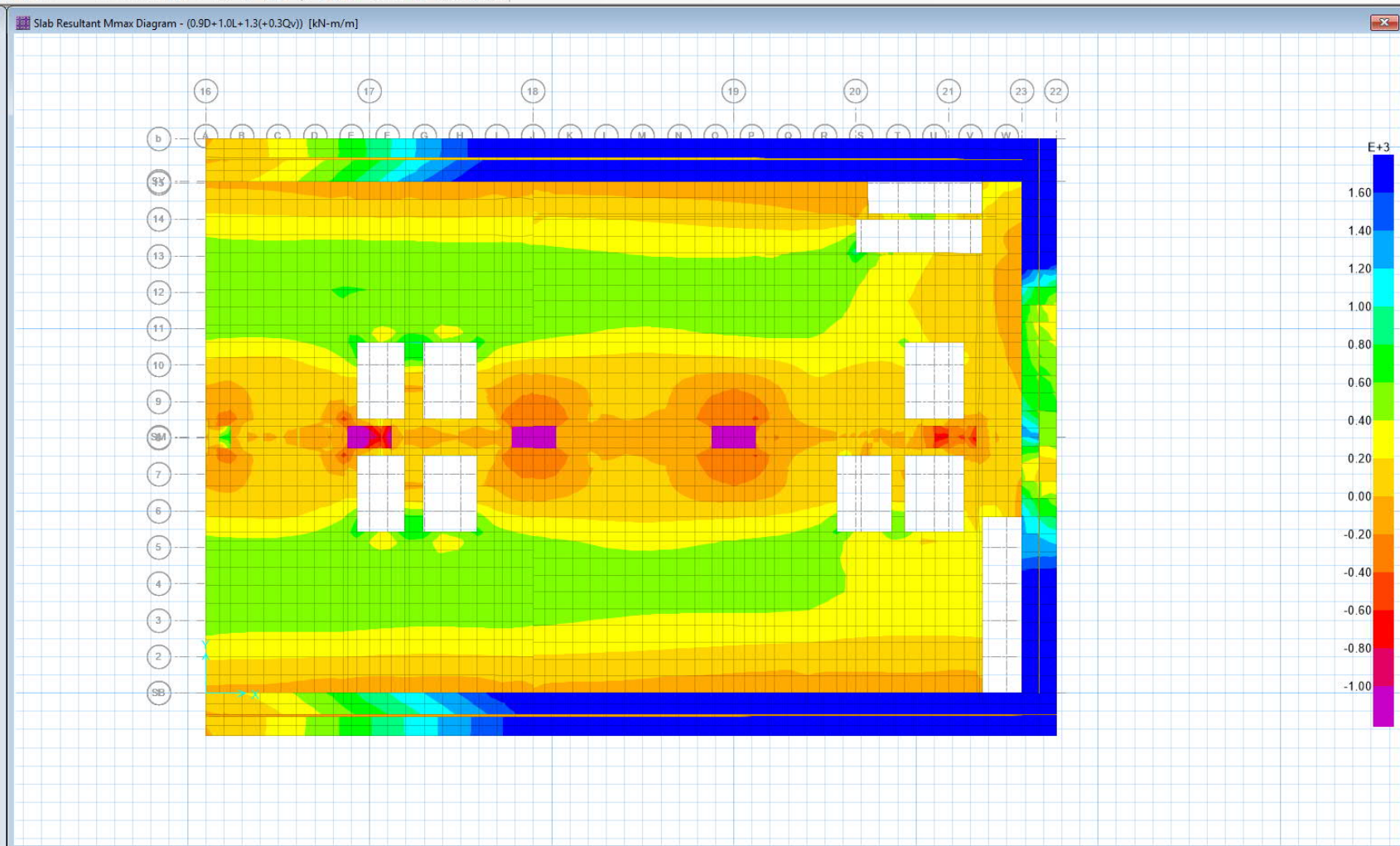
TABLE: Element Forces - Slabs

Area	AreaElem	Node	OutputCase	CaseType	F11	F22	F12	FMax	FMin	FAngle	FVM	M11	M22	M12	MMax	MMin	MAngle	V13	V23	VMax	VAngle
20	2083	298	1.25D+1.5L	Combination	-21.4	-107.61	17.58	-17.96	-111.06	11.093	103.26	53.9884	1629.8698	-199.1568	1654.6492	29.209	-82.908	98.54	-775.37	781.6	-82.757
20	2083	298	UDCONU2	Combination	-21.4	-107.61	17.58	-17.96	-111.06	11.093	103.26	53.9884	1629.8698	-199.1568	1654.6492	29.209	-82.908	98.54	-775.37	781.6	-82.757
20	2084	452	1.25D+1.5L	Combination	-17.39	-86.7	-6.48	-16.79	-87.3	-5.293	80.23	140.1246	1632.7933	169.5128	1651.8017	121.1162	83.602	-41.9	-773.21	774.35	-93.102
20	2084	452	UDCONU2	Combination	-17.39	-86.7	-6.48	-16.79	-87.3	-5.293	80.23	140.1246	1632.7933	169.5128	1651.8017	121.1162	83.602	-41.9	-773.21	774.35	-93.102
20	2083	298	1.25D+1.0L+1.3(+Qv)	Combination	-20.83	-105.37	17.2	-17.47	-108.73	11.069	101.14	52.8731	1584.5462	-193.2629	1608.5553	28.864	-82.918	95.89	-753.61	759.69	-82.748
20	2084	452	1.25D+1.0L+1.3(+Qv)	Combination	-16.97	-85.11	-6.36	-16.38	-85.7	-5.287	78.79	137.0715	1587.2096	166.0355	1605.9771	118.304	83.551	-40.51	-751.33	752.43	-93.086
20	1758	516	1.25D+1.5L	Combination	-22.08	-110.02	-16.67	-19.02	-113.08	-10.383	104.87	37.7716	1542.1108	183.6352	1564.2028	15.6796	83.14	94.83	740.23	746.28	82.7
20	1758	516	UDCONU2	Combination	-22.08	-110.02	-16.67	-19.02	-113.08	-10.383	104.87	37.7716	1542.1108	183.6352	1564.2028	15.6796	83.14	94.83	740.23	746.28	82.7
20	1759	541	1.25D+1.5L	Combination	-6.74	-40.94	1.77	-6.65	-41.03	2.952	38.15	117.6646	1544.9962	-149.5301	1560.493	102.1678	-84.083	-39.16	737.26	738.3	93.04
20	1759	541	UDCONU2	Combination	-6.74	-40.94	1.77	-6.65	-41.03	2.952	38.15	117.6646	1544.9962	-149.5301	1560.493	102.1678	-84.083	-39.16	737.26	738.3	93.04
20	2083	298	1.25D+1.0L+1.3(+0.3Qv)	Combination	-19.83	-100.01	16.38	-16.61	-103.22	11.109	96	50.443	1515.1803	-184.8096	1538.1384	27.4849	-82.919	91.88	-721	726.83	-82.738
20	2084	452	1.25D+1.0L+1.3(+0.3Qv)	Combination	-16.59	-82.66	-6.23	-16.01	-83.24	-5.34	76.51	130.9199	1517.536	158.7063	1535.4689	112.987	83.553	-38.72	-718.74	719.79	-93.084
20	1758	516	1.25D+1.0L+1.3(+Qv)	Combination	-21.51	-107.59	-16.24	-18.55	-110.55	-10.338	102.55	36.6313	1496.185	177.6791	1517.5035	15.3129	83.158	92.1	718.12	724.01	82.692
20	1759	541	1.25D+1.0L+1.3(+Qv)	Combination	-6.14	-38.38	1.56	-6.07	-38.45	2.769	35.81	114.5729	1498.8398	-146.0019	1514.0714	99.3414	-84.044	-37.8	715.09	716.09	93.026
20	2083	298	1.25D+1.0L+1.3(-0.3Qv)	Combination	-18.96	-95.41	15.67	-15.88	-98.5	11.147	91.6	48.36	1455.7239	-177.5639	1477.7811	26.3028	-82.919	88.44	-693.04	698.66	-82.728
20	2083	-2103	1.25D+1.5L	Combination	-13.99	-70.57	8.75	-12.67	-71.9	8.592	66.47	41.7582	1452.1724	-187.3637	1476.638	17.2926	-82.561	98.54	-775.37	781.6	-82.757
20	2083	-2103	UDCONU2	Combination	-13.99	-70.57	8.75	-12.67	-71.9	8.592	66.47	41.7582	1452.1724	-187.3637	1476.638	17.2926	-82.561	98.54	-775.37	781.6	-82.757
20	2084	452	1.25D+1.0L+1.3(-0.3Qv)	Combination	-16.27	-80.56	-6.12	-15.69	-81.14	-5.388	74.55	125.6471	1457.8157	152.424	1475.0332	108.4296	83.555	-37.18	-690.81	691.81	-93.081
20	2084	-2103	1.25D+1.5L	Combination	-14.17	-70.61	-4.46	-13.82	-70.96	-4.49	65.16	111.2336	1461.5824	110.1165	1470.5031	102.3129	85.368	-41.9	-773.21	774.35	-93.102
20	2084	-2103	UDCONU2	Combination	-14.17	-70.61	-4.46	-13.82	-70.96	-4.49	65.16	111.2336	1461.5824	110.1165	1470.5031	102.3129	85.368	-41.9	-773.21	774.35	-93.102
20	1758	516	1.25D+1.0L+1.3(+0.3Qv)	Combination	-20.52	-102.08	-15.37	-17.72	-104.88	-10.328	97.24	34.1676	1426.0146	169.147	1446.2756	13.9067	83.169	87.95	685.03	690.66	82.684
20	1759	541	1.25D+1.0L+1.3(+0.3Qv)	Combination	-5.52	-34.66	1.31	-5.47	-34.72	2.571	32.33	108.3921	1428.4153	-138.6083	1442.8128	93.9947	-84.07	-36.09	682.13	683.09	93.029
20	2083	-2103	1.25D+1.0L+1.3(+Qv)	Combination	-13.58	-69.12	8.56	-12.29	-70.4	8.562	65.13	40.9731	1411.6677	-181.7013	1435.3453	17.2955	-82.576	95.89	-753.61	759.69	-82.748
20	2084	-2103	1.25D+1.0L+1.3(+Qv)	Combination	-13.78	-69.16	-4.39	-13.43	-69.5	-4.507	63.85	109.1328	1420.8168	107.6456	1429.5922	100.3574	85.339	-40.51	-751.33	752.43	-93.086
20	2083	298	1.25D+1.0L+1.3(-Qv)	Combination	-17.96	-90.04	14.85	-15.02	-92.98	11.197	86.46	45.9298	1386.3581	-169.1106	1407.3641	24.9237	-82.919	84.43	-660.43	665.8	-82.715
20	2084	452	1.25D+1.0L+1.3(-Qv)	Combination	-15.89	-78.12	-5.99	-15.32	-78.69	-5.447	72.26	119.4955	1388.1421	145.0948	1404.525	103.1126	83.558	-35.39	-658.22	659.17	-93.078
20	1758	-1810	1.25D+1.5L	Combination	-12.93	-64.26	-8.75	-11.47	-65.71	-9.415	60.79	25.9231	1375.3526	176.1853	1397.9765	3.2992	82.683	94.83	740.23	746.28	82.7
20	1758	-1810	UDCONU2	Combination	-12.93	-64.26	-8.75	-11.47	-65.71	-9.415	60.79	25.9231	1375.3526	176.1853	1397.9765	3.2992	82.683	94.83	740.23	746.28	82.7
20	1759	-1810	1.25D+1.5L	Combination	-11.34	-63.94	1.81	-11.28	-64	1.97	59.18	90.7802	1383.717	-103.1482	1391.8942	82.6029	-85.467	-39.16	737.26	738.3	93.04
20	1759	-1810	UDCONU2	Combination	-11.34	-63.94	1.81	-11.28	-64	1.97	59.18	90.7802	1383.717	-103.1482	1391.8942	82.6029	-85.467	-39.16	737.26	738.3	93.04



Model Explorer

- Model
- Display
- Detailing
- Named Displays
 - Undeformed Shape
 - Default-2D
 - Default-3D
 - Loads
 - Default-2D
 - Default-3D
 - Deformed Shape
 - Default-2D
 - Default-3D
 - Reaction Forces
 - Default-2D
 - Default-3D
 - Beam Forces/Stresses
 - Default-2D
 - Default-3D
 - Slab Forces/Stresses
 - Default-2D
 - Default-3D
 - Strip Forces
 - Default-2D
 - Default-3D
 - Slab Design
 - Default-2D
 - Default-3D
 - Beam Design
 - Default-2D
 - Default-3D
 - Punching Shear Design
 - Default-2D
 - Default-3D



Max = 1195.7456 kN-m/m at [10.92 m, 19.25 m]; Min = -982.0458 kN-m/m at [7.8 m, 14.65 m]