

9 Troubleshooting Guide

IMPORTANT NOTICE

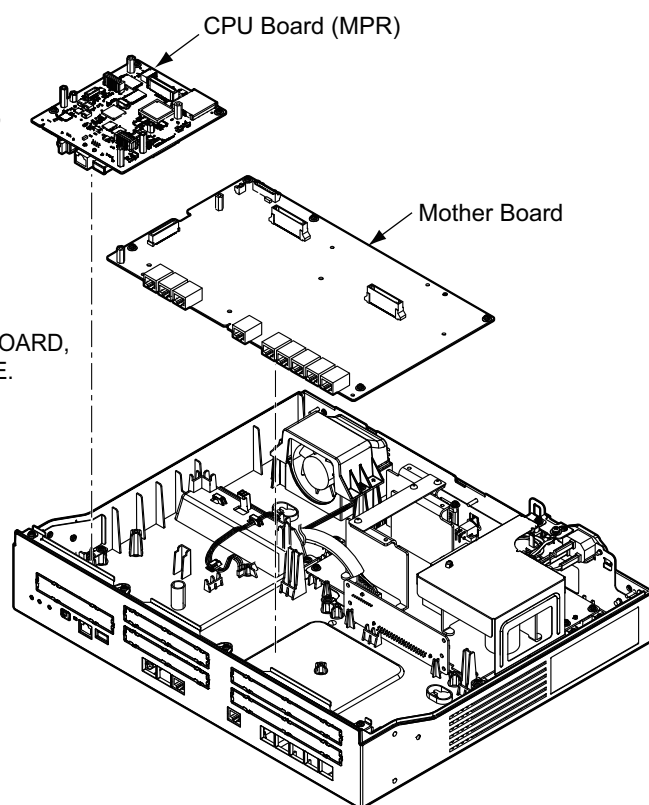
NS300/500 CPU Board (MPR) has battery backedup SRAM, and this SRAM is supplied by battery which is equipped on Mother board.
Once CPU Board (MPR) is removed from Mother board, 'System Initialization' is required.

Please make sure

BEFORE REMOVING CPU BOARD (MPR) FROM MOTHER BOARD, YOU MUST EXECUTE SYSTEM DATA BACKUP PROCEDURE. OTHERWISE SYSTEM DATA WILL BE LOST.

Please refer

- System Initialization : Installation Manual '4.13 Starting the KX-NSXXX'
- System Data Backup : PC Programming Manual '6.1 Tool - System Data Backup'



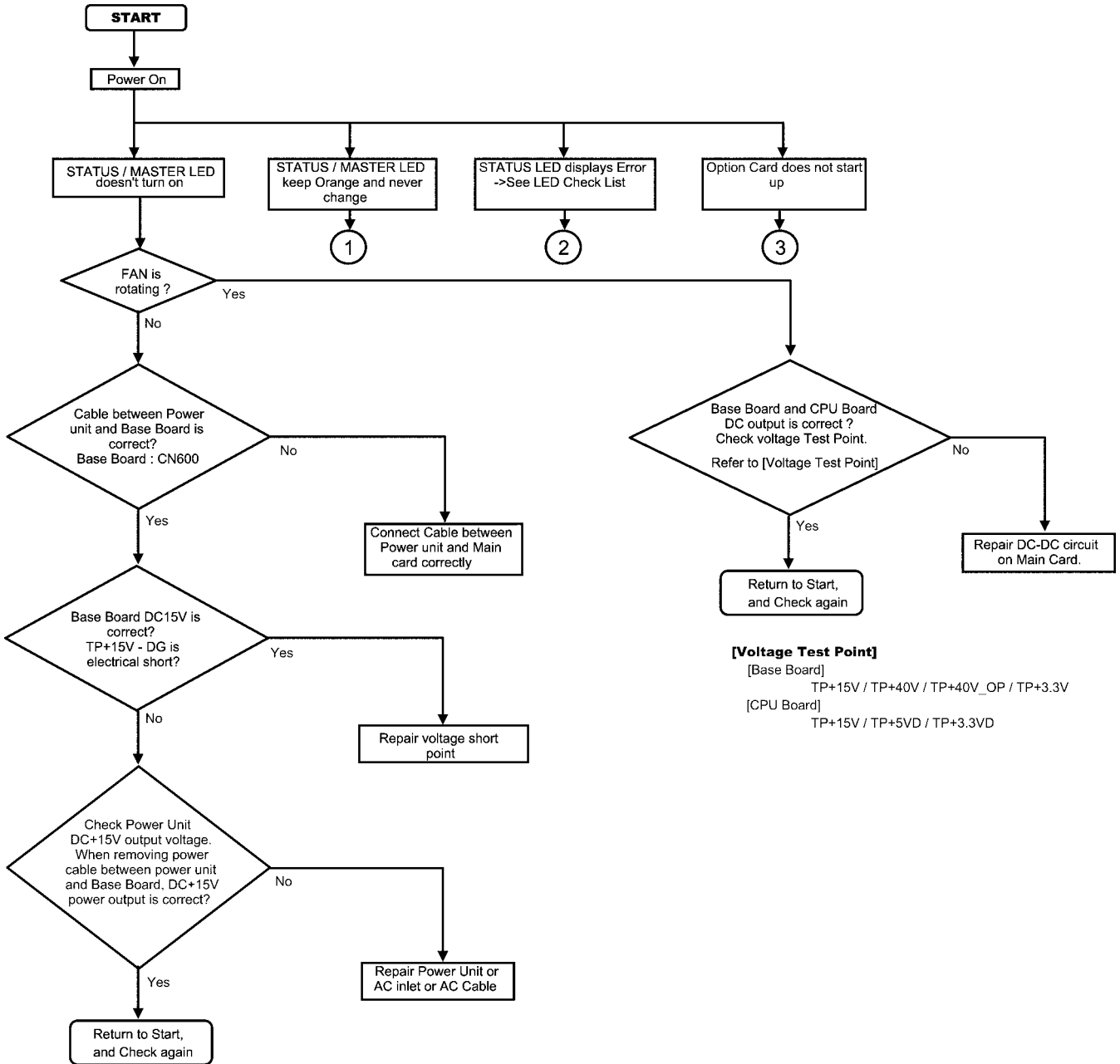
LED Check List

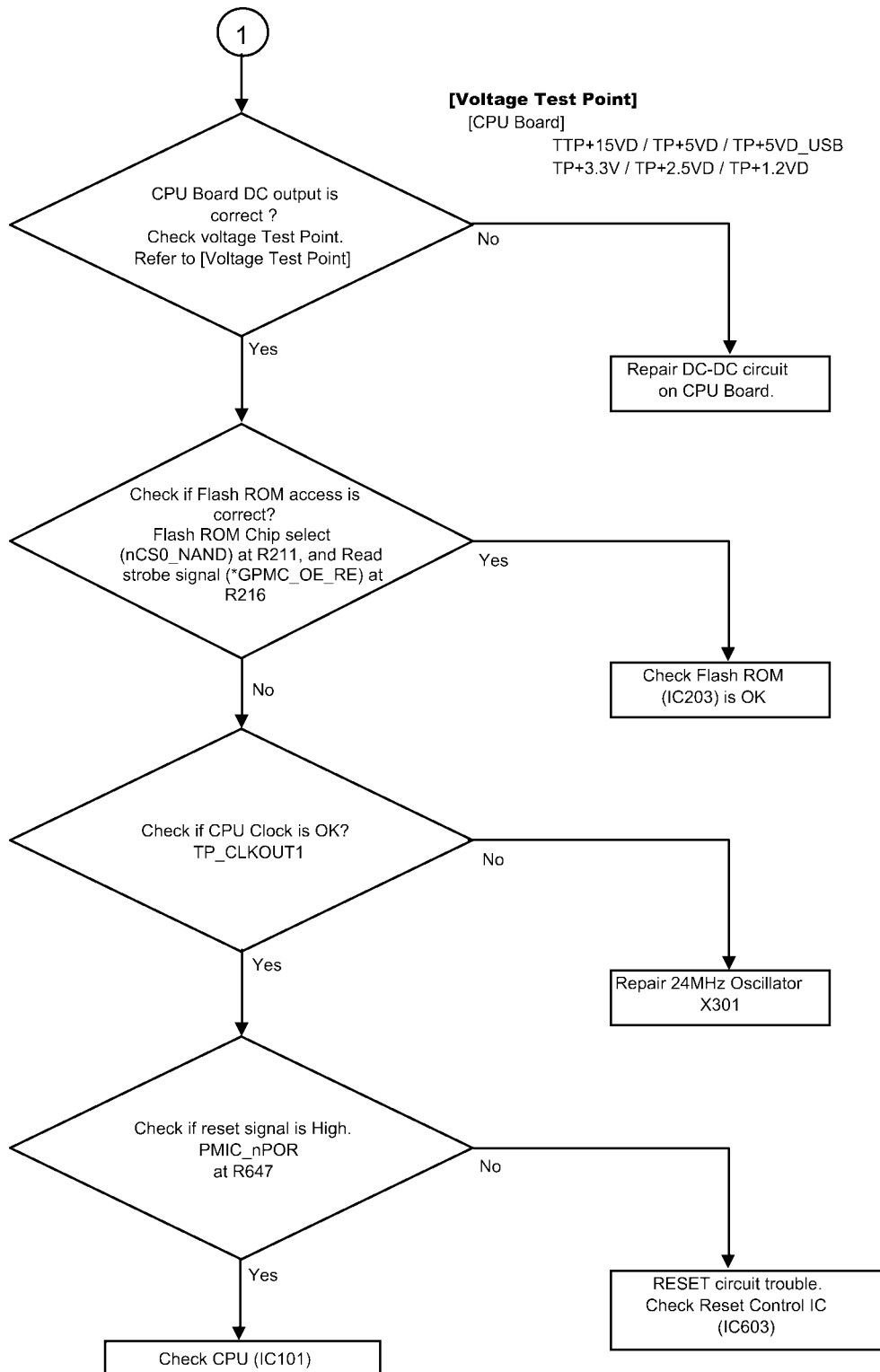
9.1. MPR/SPR/Mother Board

Mother / CPU Board Chassis Startup Diag Test LED Pattern

No	Item	STATUS LED Blinking Pattern	Remark
1	Diag Test Start	ORANGE	
2	Flash ROM Test NG2 (U-BOOT Error)	RED Blink x 2	(60/min speed Red Blink) x 2 + 2sec Off
3	SDRAM Address Bus Test NG	RED Blink x 3	(60/min speed Red Blink) x 3 + 2sec Off
4	SDRAM Data Bus Test NG	RED Blink x 4	(60/min speed Red Blink) x 4 + 2sec Off
5	SDRAM Memory Cell Test NG	RED Blink x 5	(60/min speed Red Blink) x 5 + 2sec Off
6	FPGA Diag Test NG / Code Load NG	RED Blink x 6	(60/min speed Red Blink) x 6 + 2sec Off
7	SRAM Memory Cell Test NG	Amber Blink x 6	(60/min speed Red Blink) x 6 + 2sec Off

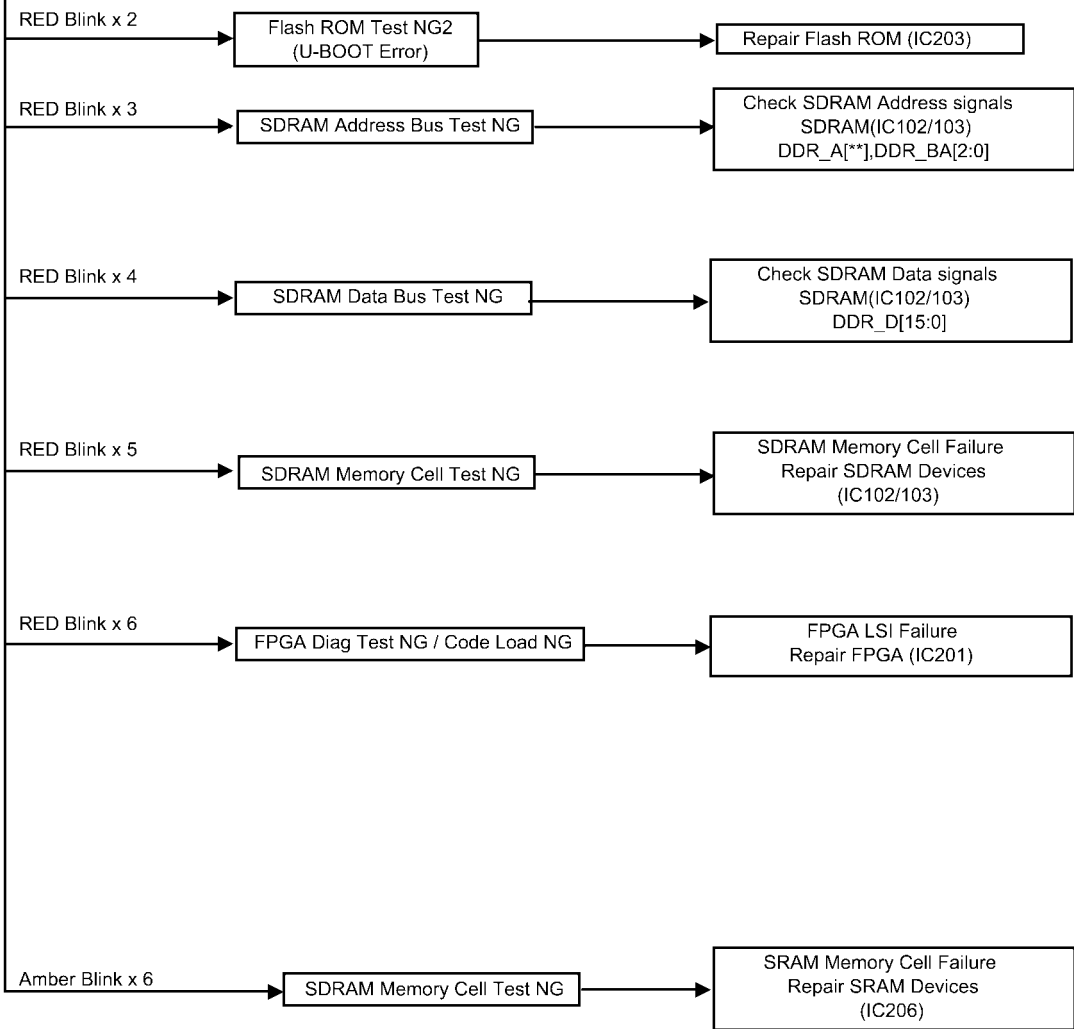
9.1.1. Startup

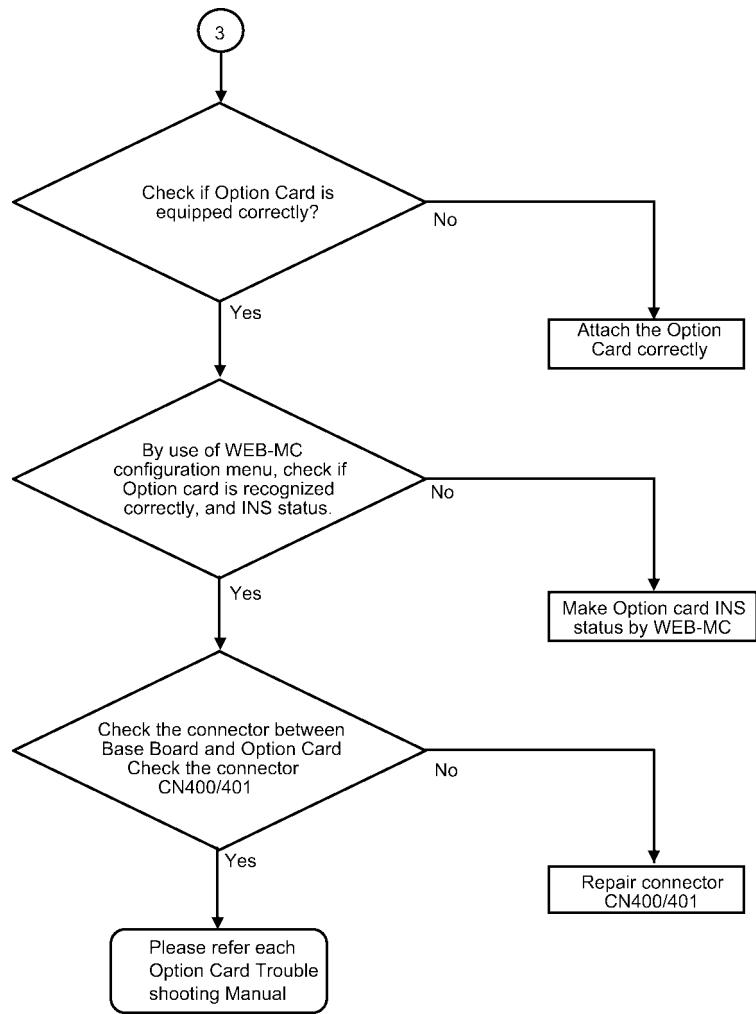




2

According to the table (LED Check List), please find the failure point.





9.1.2. Battery Alarm

