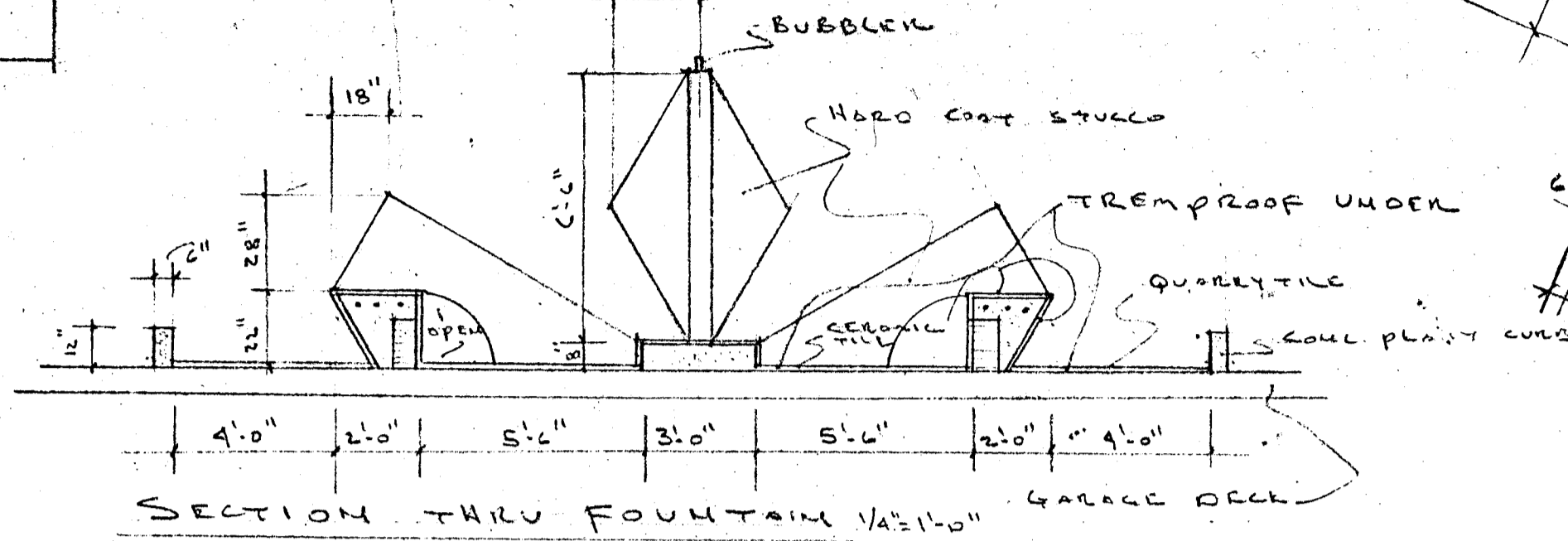
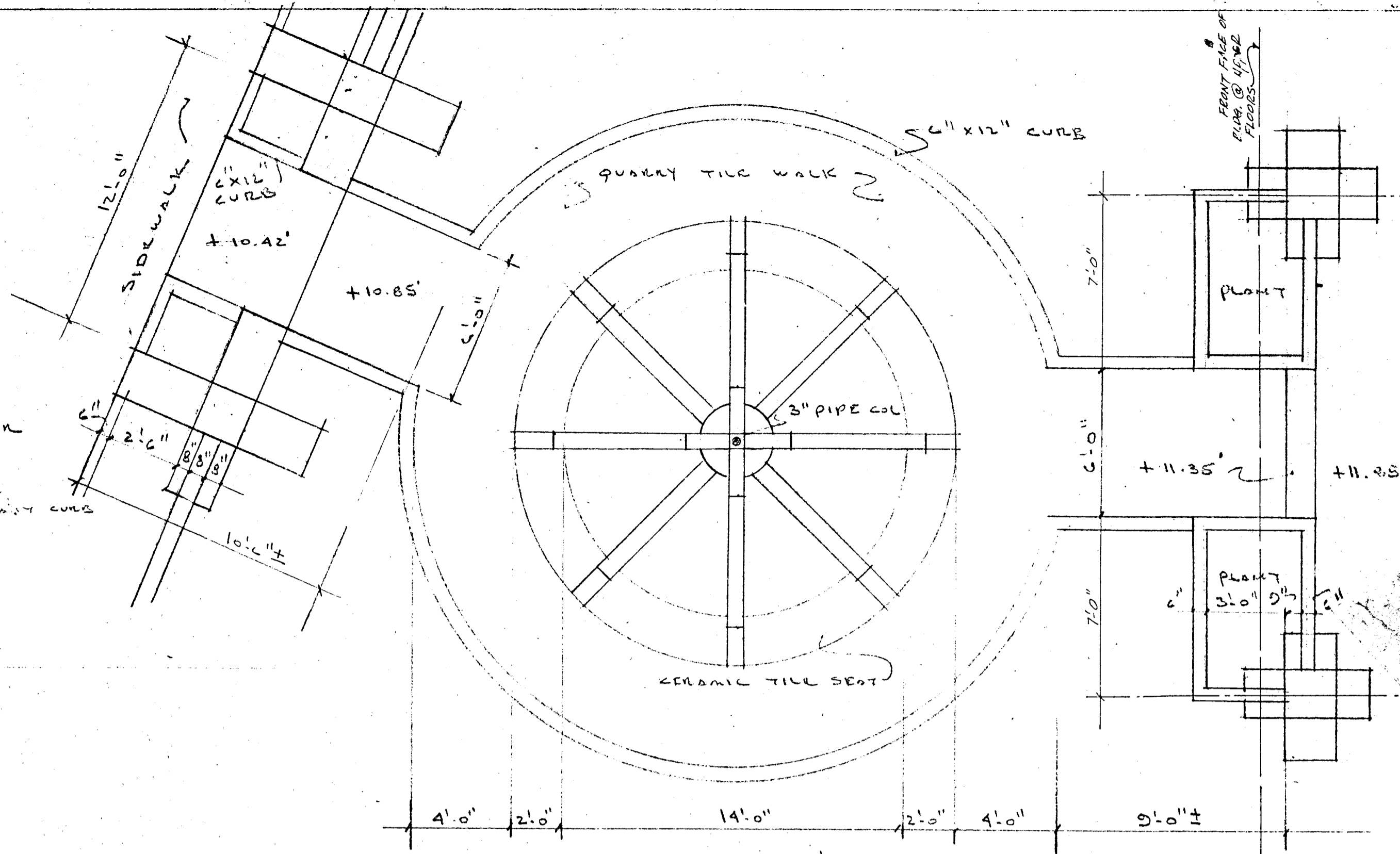


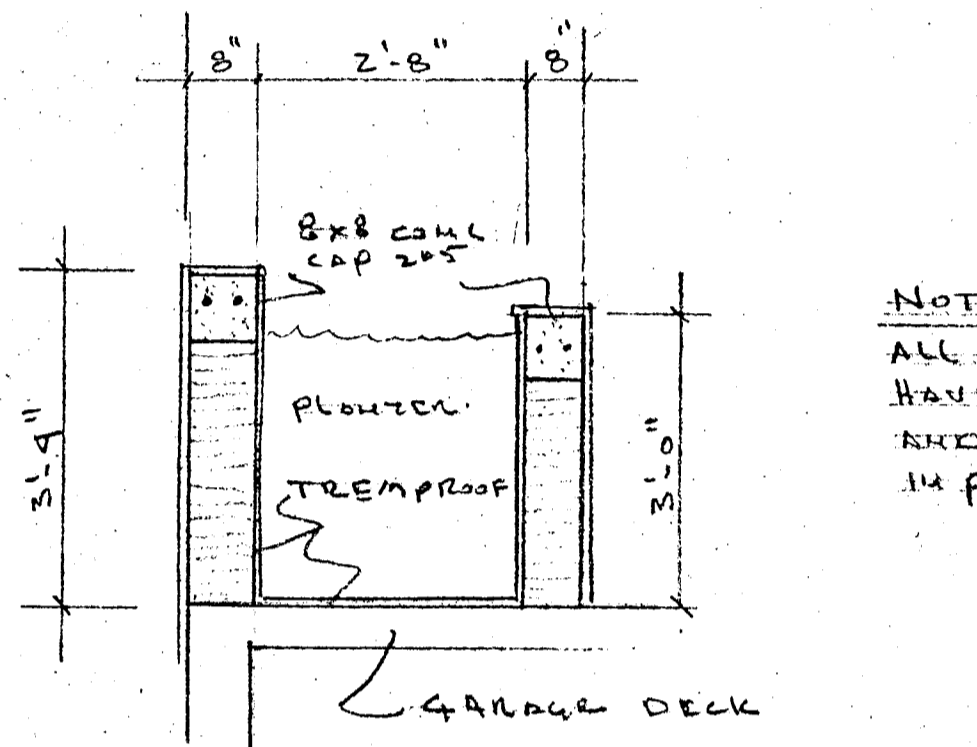
FEATURE WALL DETAIL 1/2"=1'-0"



SECTION THRU FOUNTAIN 1/2"=1'-0" GARAGE DECK

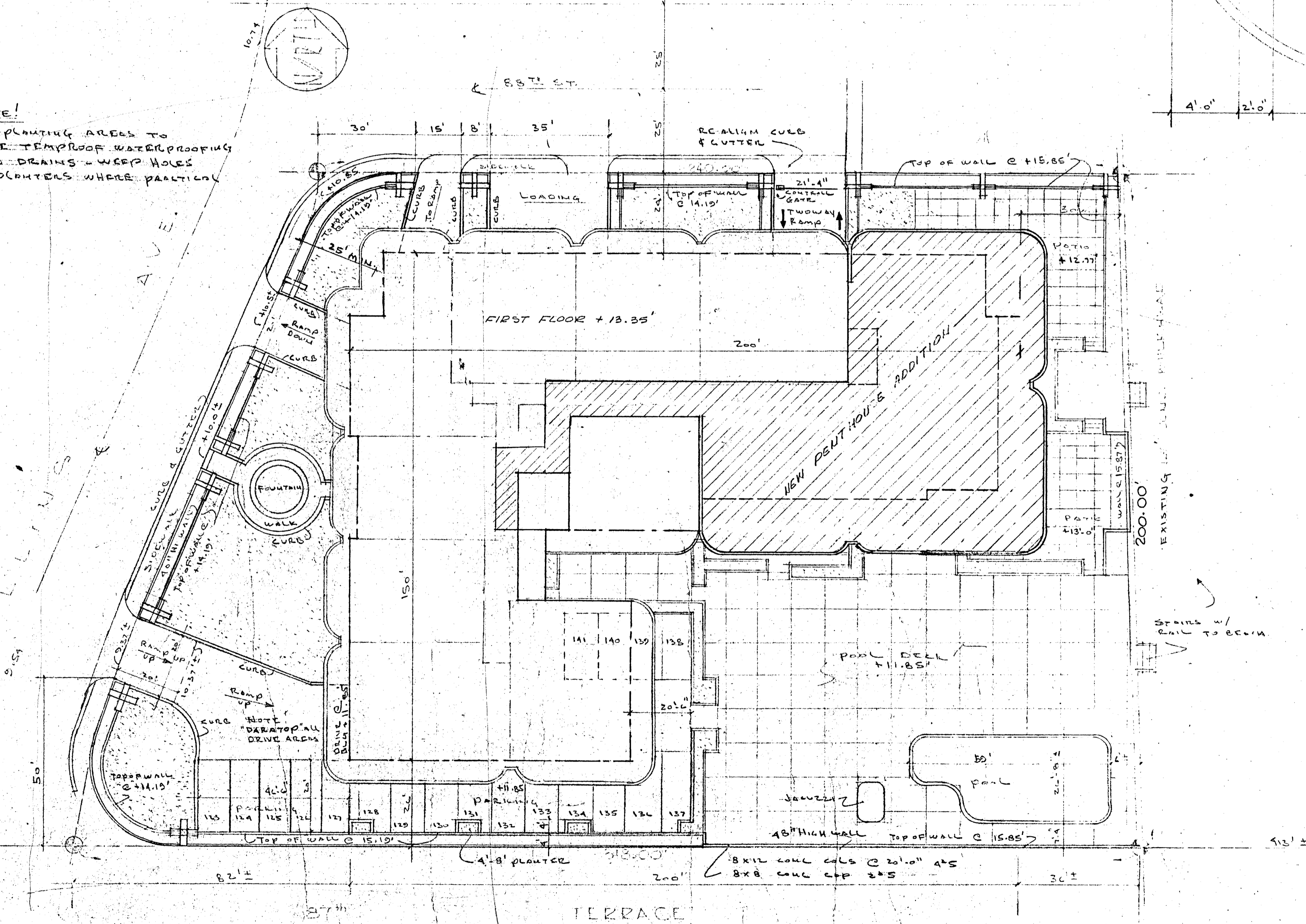


FOUNTAIN PLAN 1/4"=1'-0"

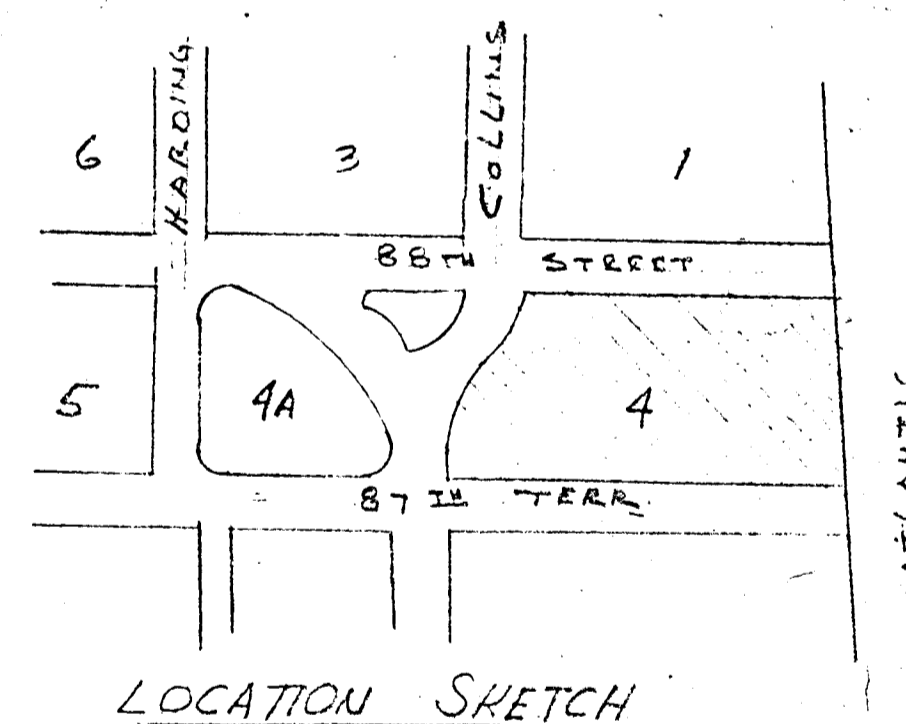


SECTION THRU 4x8 PLANTER 1/2"=1'-0"

NOTE!
ALL PLANTING AREAS TO HAVE TREMPROOF WATERPROOFING AND DRAINS - WEEP HOLES IN PLANTERS WHERE PRACTICAL



SITE PLAN @ 1"=20'



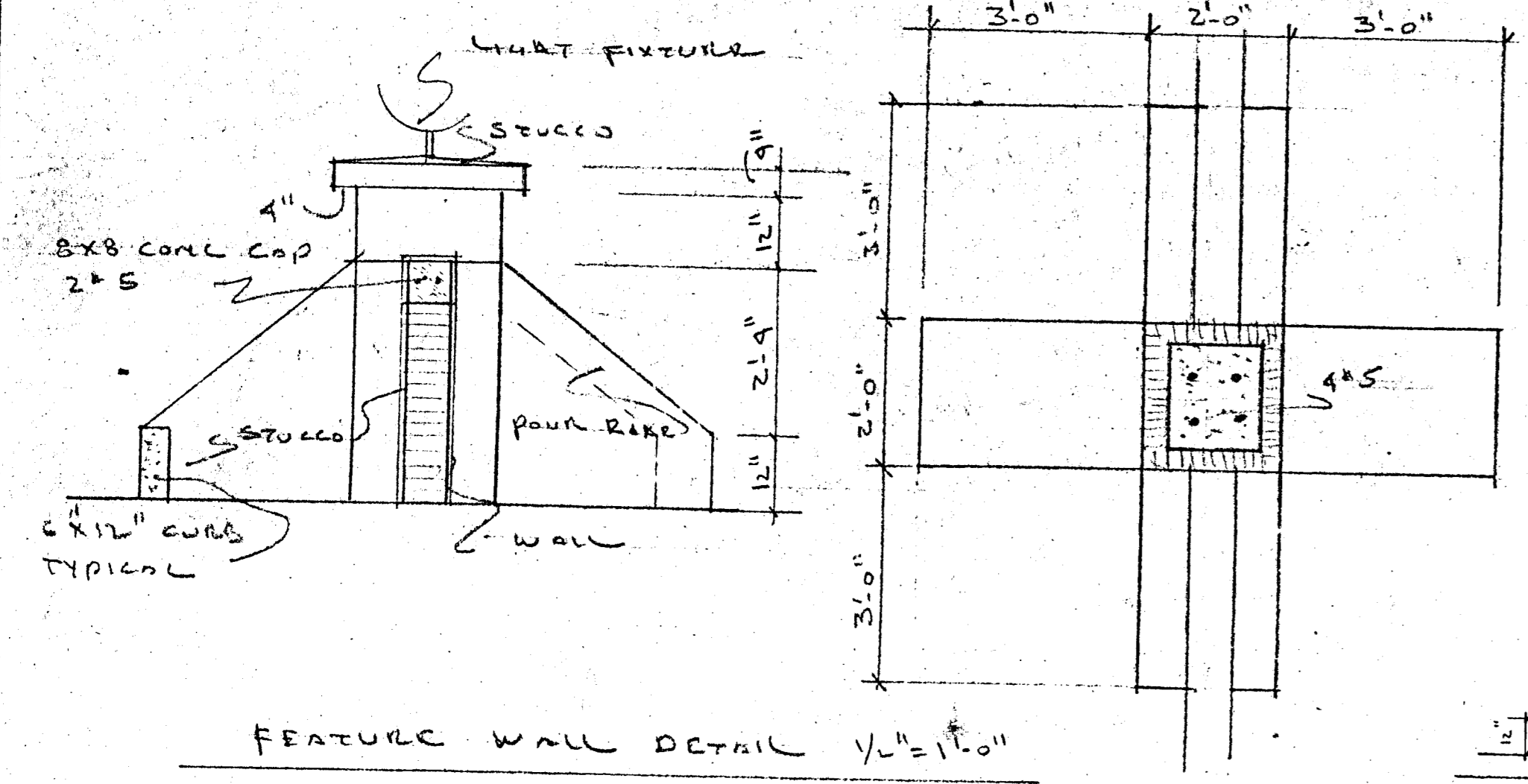
LOCATION SKETCH

LEGAL
BLOCK 4
2ND AMENDED PLAT OF
HORMONDY BEACH
SURFSIDE, DADE, FLA.

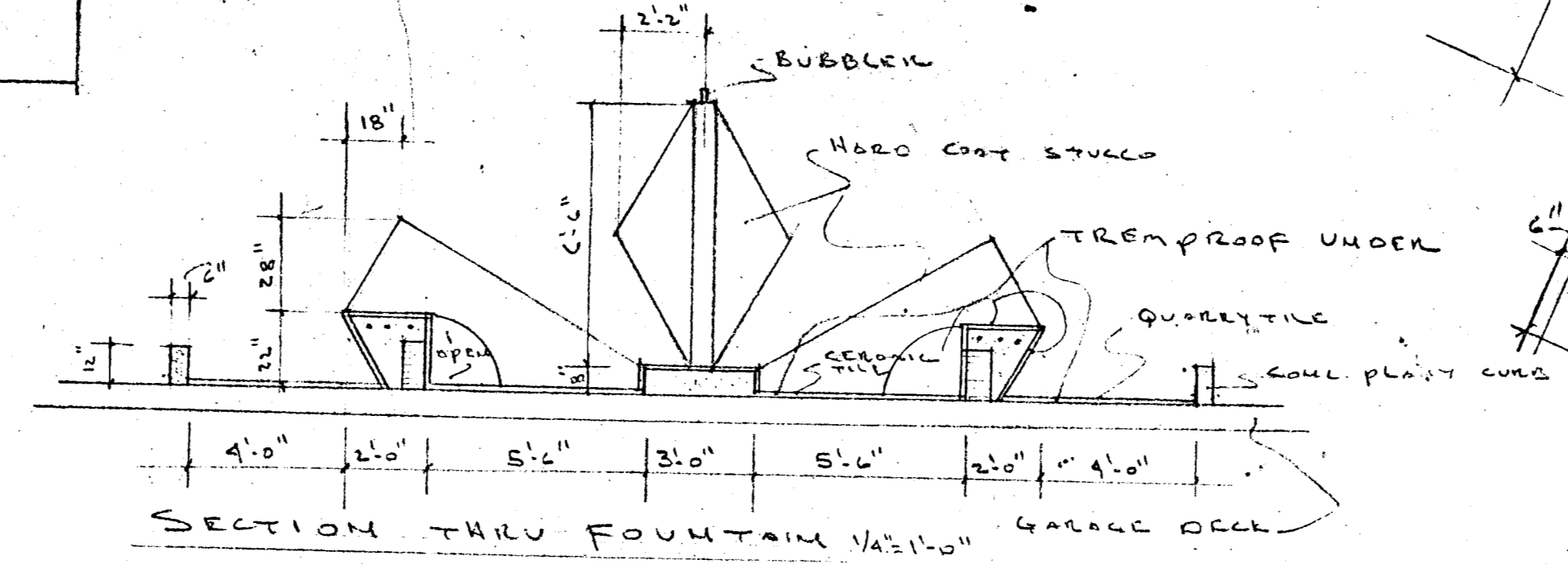
NEW PENTHOUSE ADDITION
WILLIAM M. FRIEDMAN
AND ASSOCIATES, ARCHITECTS, INC.
138 S.E. 14TH LANE
3588044
CHAMPLAIN TOWERS SOUTH
8777 COLLINS AVE.
A 135 UNIT CONDOMINIUM
COMM. No. 79030 DATE: 8/20/79 SHEET
REVISED: 5/14/80 11/27/79 1 OF 6

Contractor
COPY

JOB COPY



FEATURE WALL DETAIL 1/2"=1'-0"

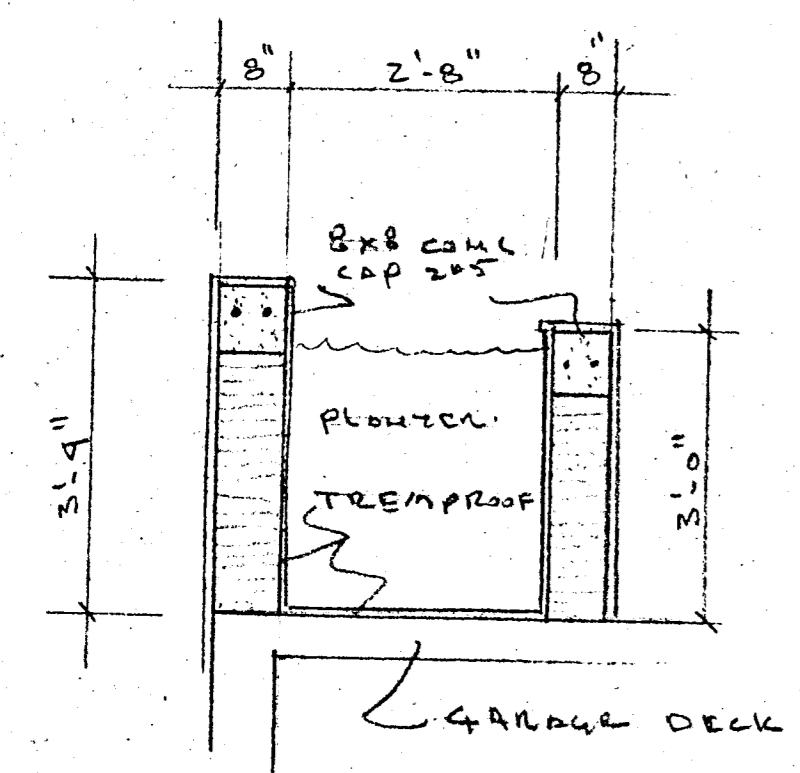


SECTION THRU FOUNTAIN 1/2"=1'-0" GARAGE DECK

TOWN OF SURFSIDE

- Approved
- Approved as noted
- Disapproved

JMG
Inspector



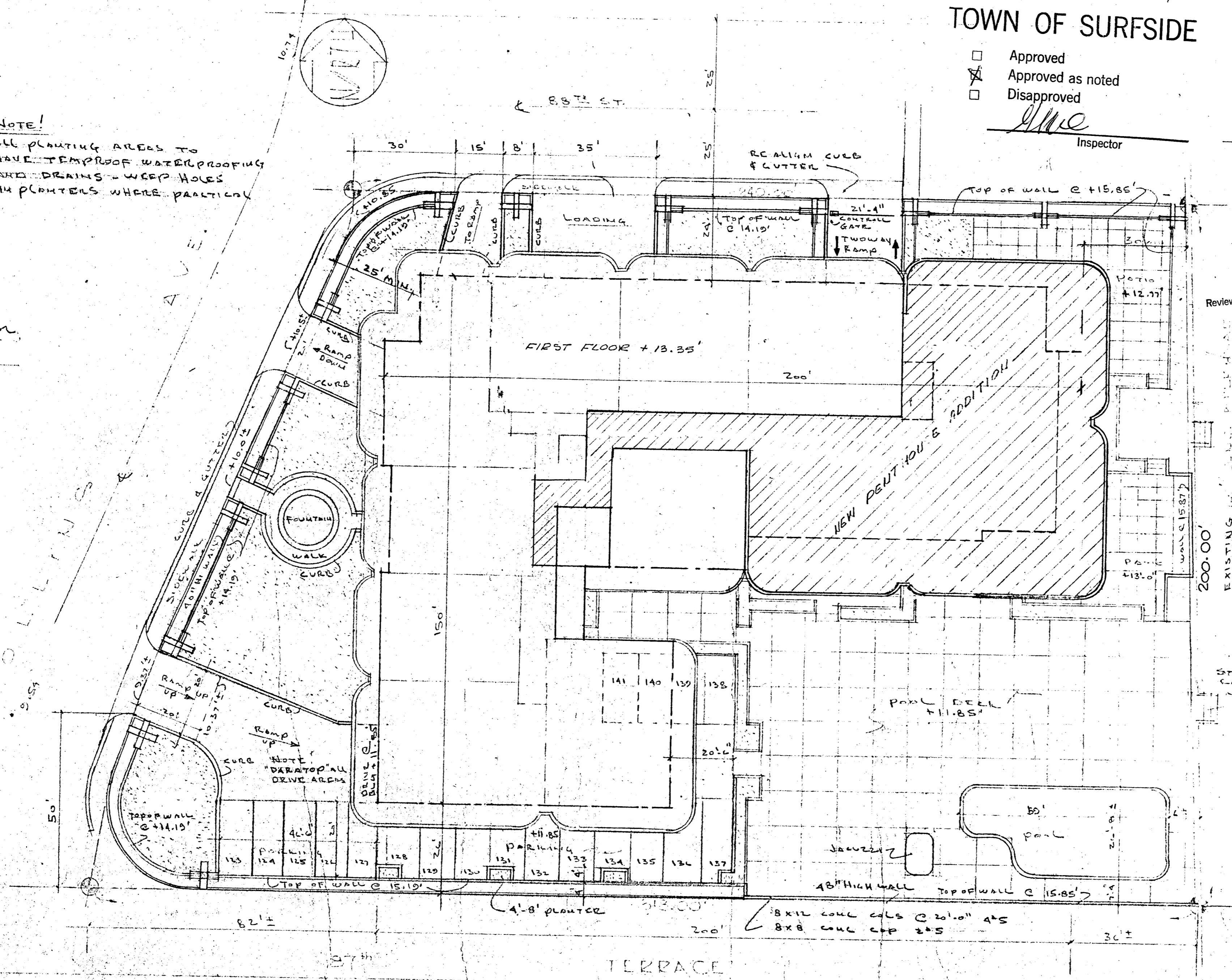
SECTION THRU 4x8 PLANTER
1/2"=1'-0"

NOTE!
ALL PLANTING AREAS TO
HAVE TREMPROOF WATERPROOFING
AND DRAINS - WEED HOLES
IN PLANTERS WHERE PRACTICAL

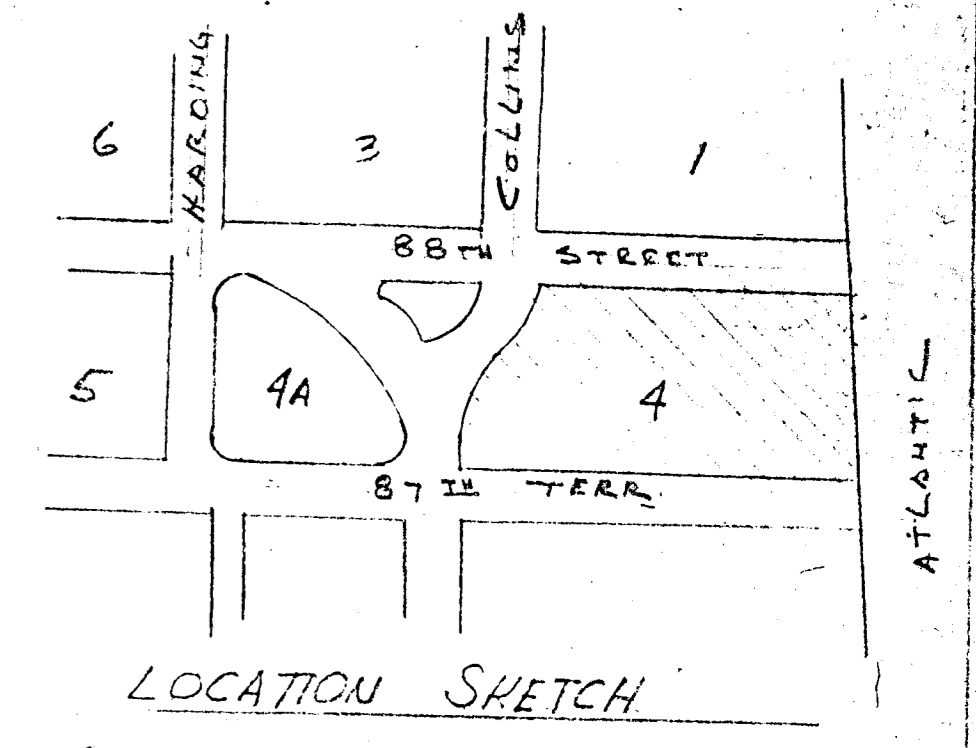
Reviewed: *Joe Roberts* Chairman
Planning & Zoning Board Date: 06/28-80

TOWN OF SURFSIDE

APPROVED:		
Blgd. Inspector	<i>JMG</i>	Date <u>11/17/80</u>
Electrical Inspector	<i>[Signature]</i>	Date <u>11/17/80</u>
Plumbing Inspector	<i>[Signature]</i>	Date <u>11/17/80</u>
Mechanical Insp.		Date



SITE PLAN @ 1"=20'



LOCATION SKETCH

LEGAL
BLOCK 4
2ND AMENDED PLAT OF
NORMANDY BEACH
SURFSIDE, DADE CO., FLA.

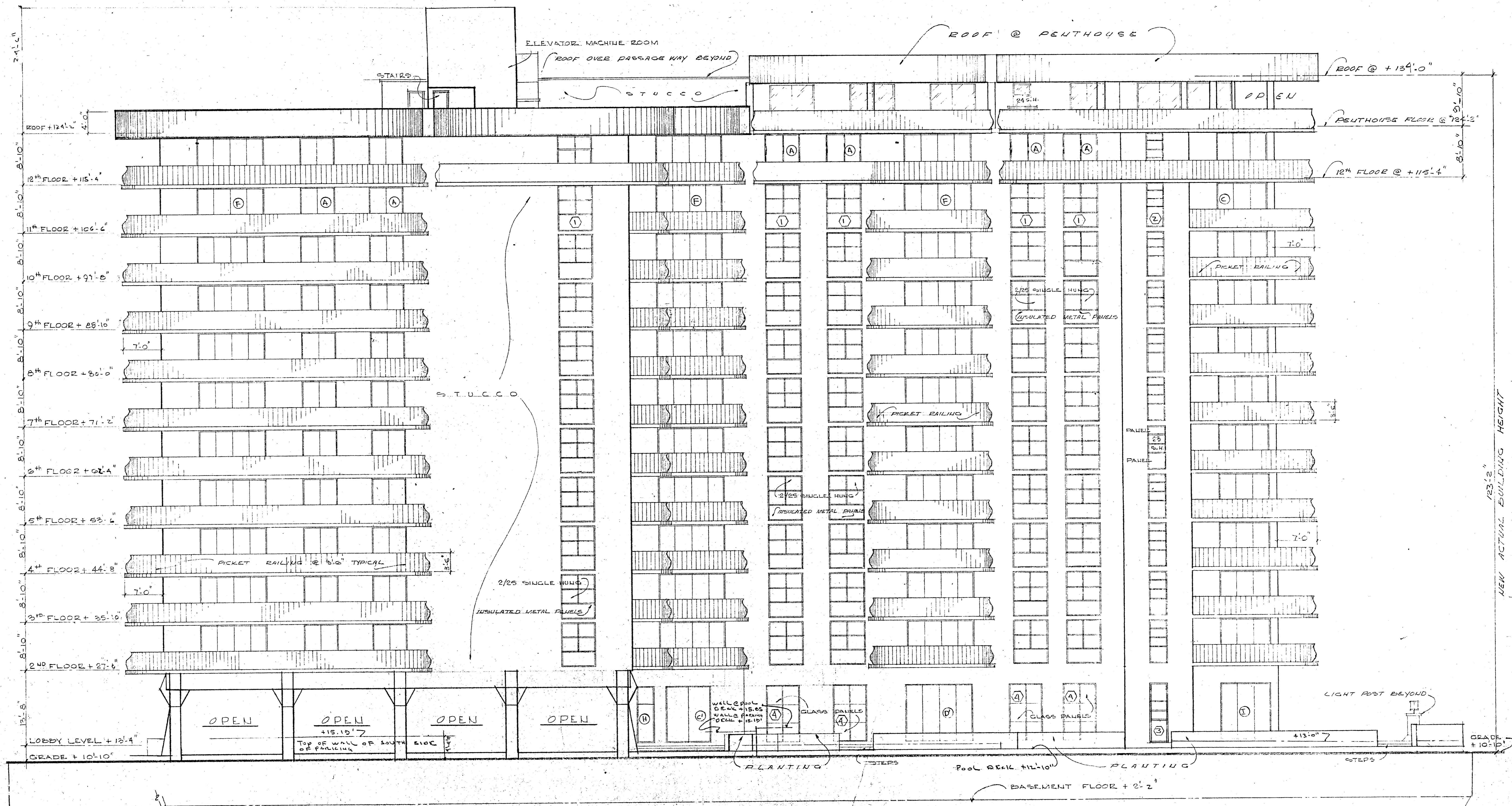
WILLIAM M. FRIEDMAN
AND ASSOCIATES, ARCHITECTS, INC.
138 S.E. 14th LANE
3588044

NEW PENTHOUSE ADDITION

CHAMPLAIN TOWERS SOUTH
8777 COLLINS AVE.
A. 125 UNIT CONDOMINIUM

COMM. No. 79030 DATE: 8/23/79 SHEET

REVISED: 5/14/80 11/27/79 1 OF 6



SOUTH ELEVATION @ 1/8"=1'-0"

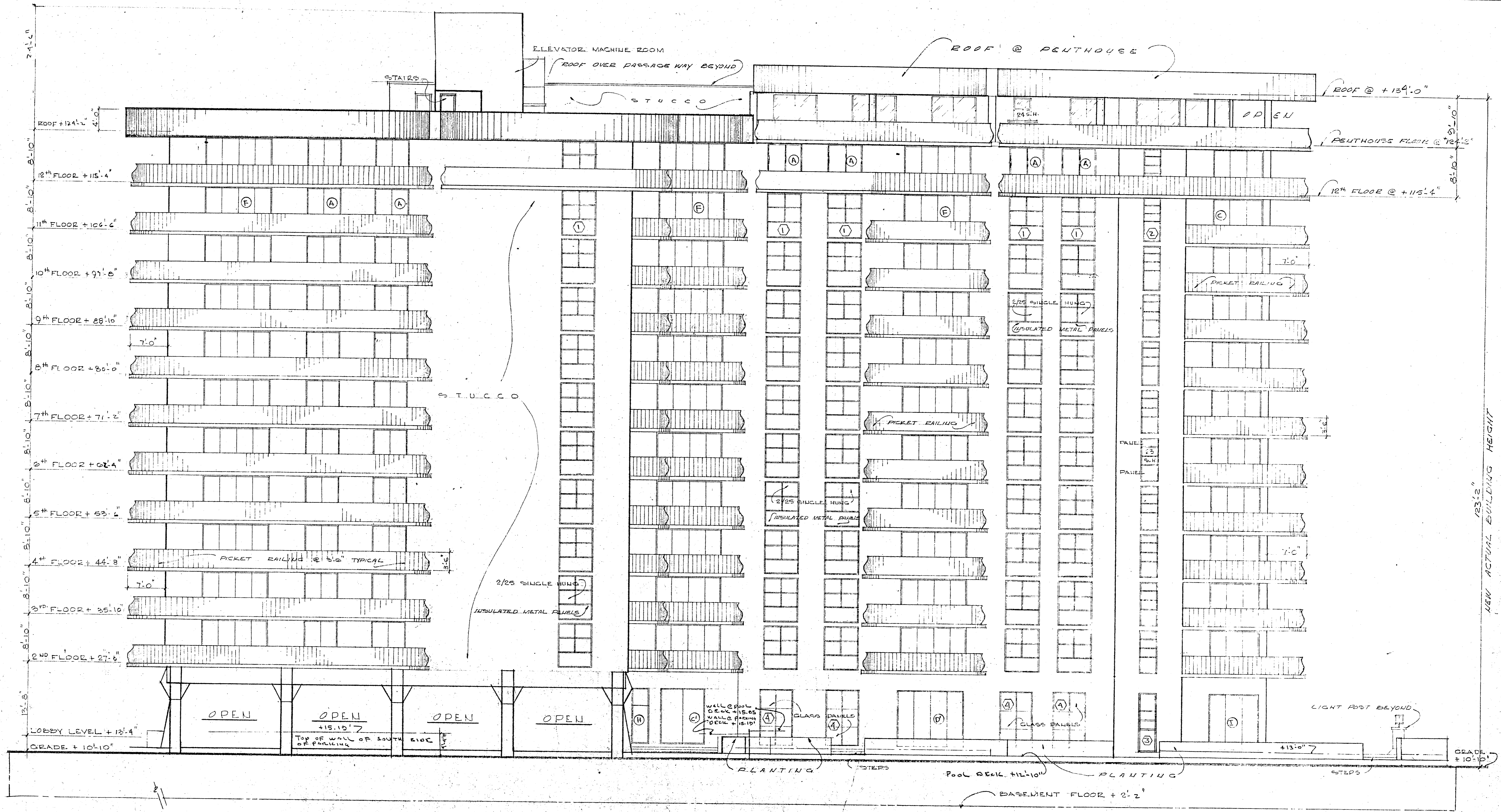
NEW PENTHOUSE ADDITION
 WILLIAM M. FRIEDMAN
 AND ASSOCIATES ARCHITECTS, INC.

138 S.E. 14th LANE
 3588044

CHAMPLAIN TOWERS SOUTH
 8777 COLLINS AVE.
 A: 125 UNIT CONDOMINIUM

COMM. No. 19030	DATE: 8/20/79	SHEET 2 OF 6
REVISED: 11/27/79 5/14/80		

NEW ACTUAL BUILDING HEIGHT 123'-2"

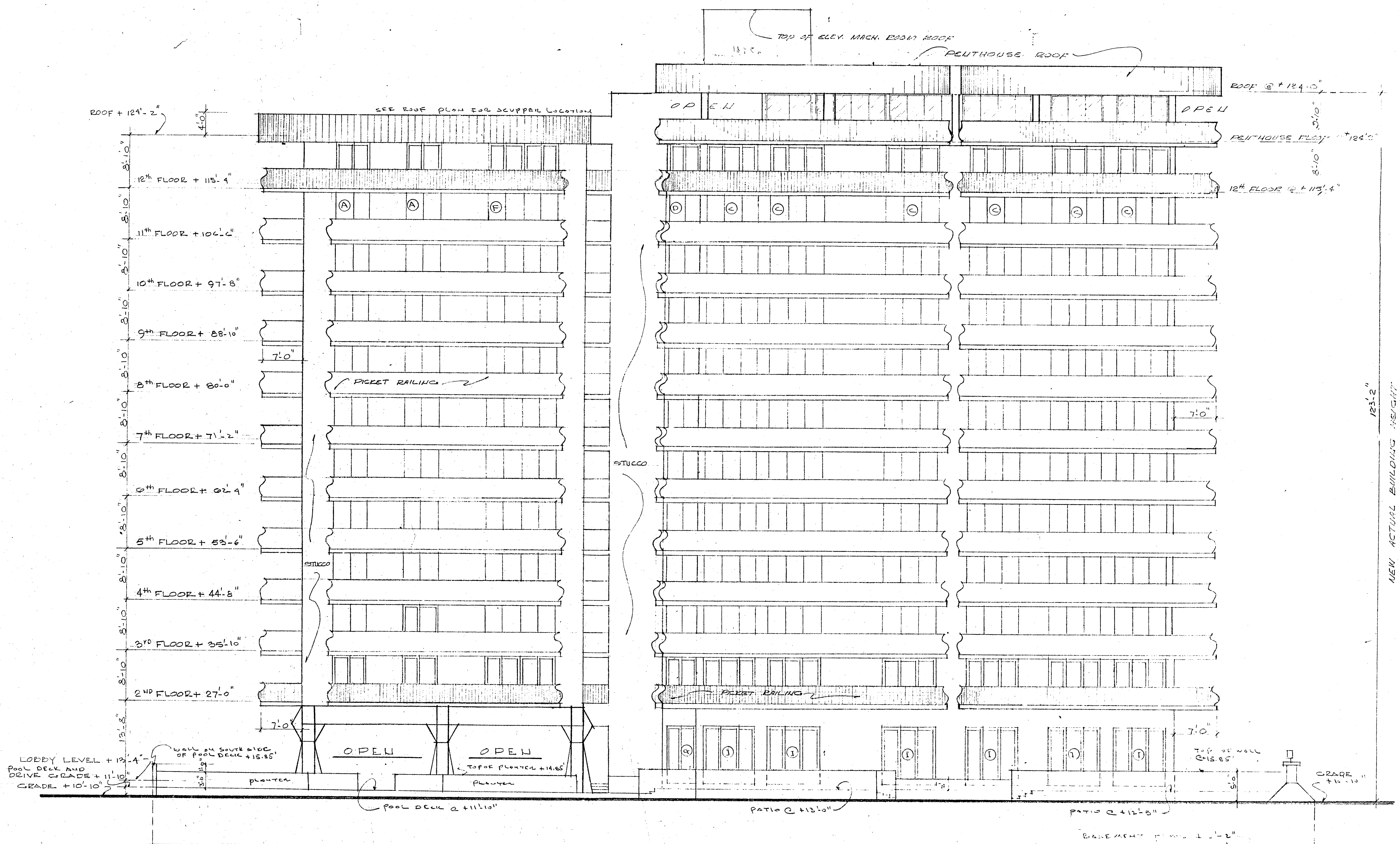


SOUTH ELEVATION @ 1/8"=1'-0"

NEW PENTHOUSE ADDITION
 WILLIAM M. FRIEDMAN
 AND ASSOCIATES ARCHITECTS, INC.

138 S.E. 14 TH LANE 3588044		CHAMPLAIN TOWERS SOUTH 377 COLLINS AVE.	
A: 135 UNIT CONDOMINIUM		SHEET	
COMM. No. 79030	DATE: 8/20/79	2 OF 6	
REVISED: 11/27/79		5/4/80	

123'-2" NEW ACTUAL BUILDING HEIGHT



EAST ELEVATION 1/8" = 1'-0"

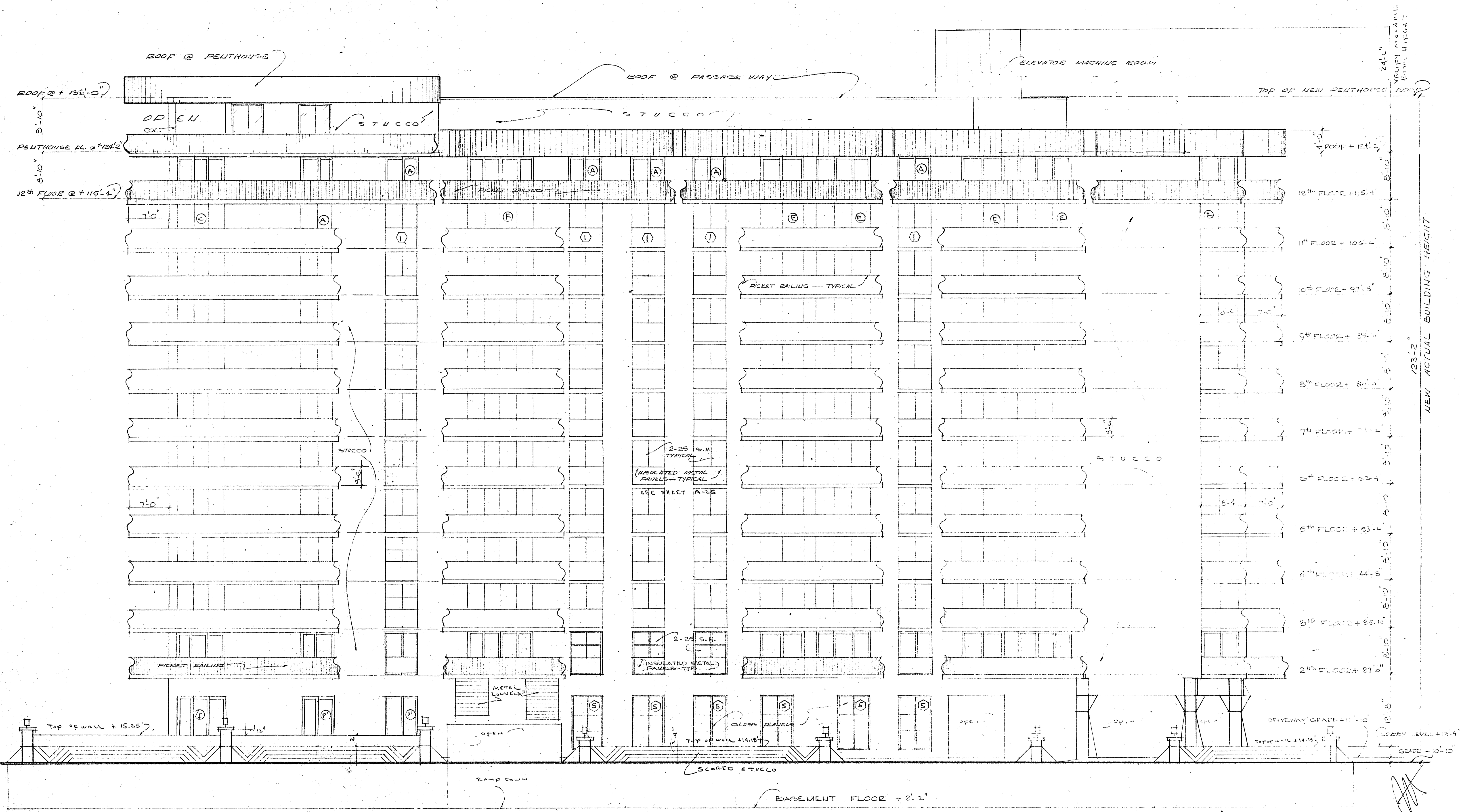
NEW PENTHOUSE ADDITION
 WILLIAM M. FRIEDMAN
 AND ASSOCIATES ARCHITECTS, INC.

138 S.E. 14TH LANE
 3588044

CHAMPLAIN TOWERS SOUTH
 8777 COLLINS AVE.
 A 135 UNIT CONDOMINIUM

COMM. No. 19030	DATE: 3/20/79	SHEET 3 OF 4
	REVISED: 5/14/82 11/27/79	

NEW ACTUAL BUILDING HEIGHT 123'-2"



NORTH ELEVATION 1/8" = 1'-0"

NEW PENTHOUSE ADDITION

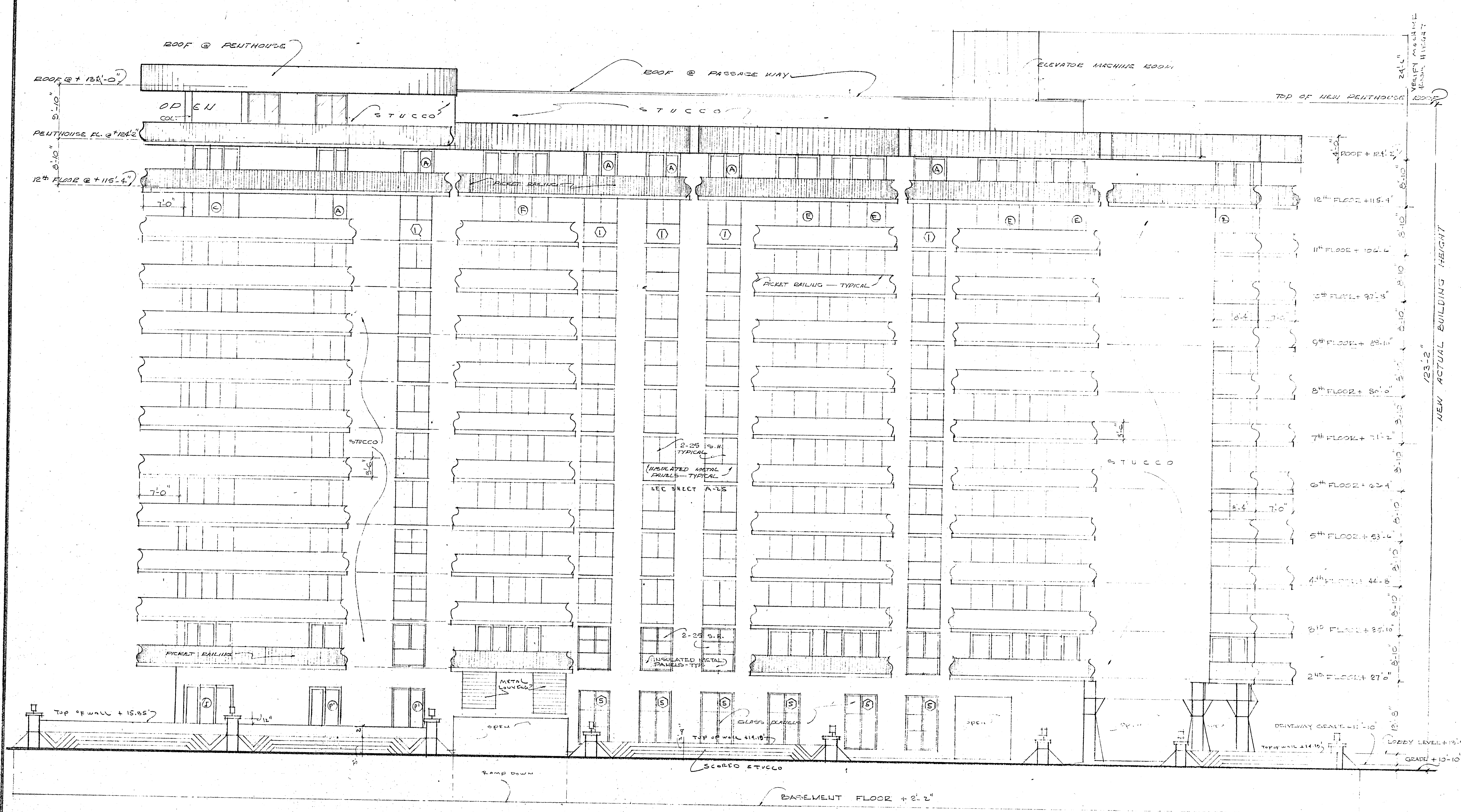
WILLIAM M. FRIEDMAN
AND ASSOCIATES ARCHITECTS, INC.

138 S.E. 14TH LANE
3588044

CHAMPLAIN TOWERS SOUTH
2777 COLLINS AVE.

A. 135 UNIT CONDOMINIUM

COMM. No. 79030	DATE: 5/20/79	SHEET 4 OF 6
REVISED: 5/14/80 11/27/79		



NORTH ELEVATION 1/8" = 1'-0"

NEW PENTHOUSE ADDITION

WILLIAM M. FRIEDMAN
AND ASSOCIATES ARCHITECTS, INC.

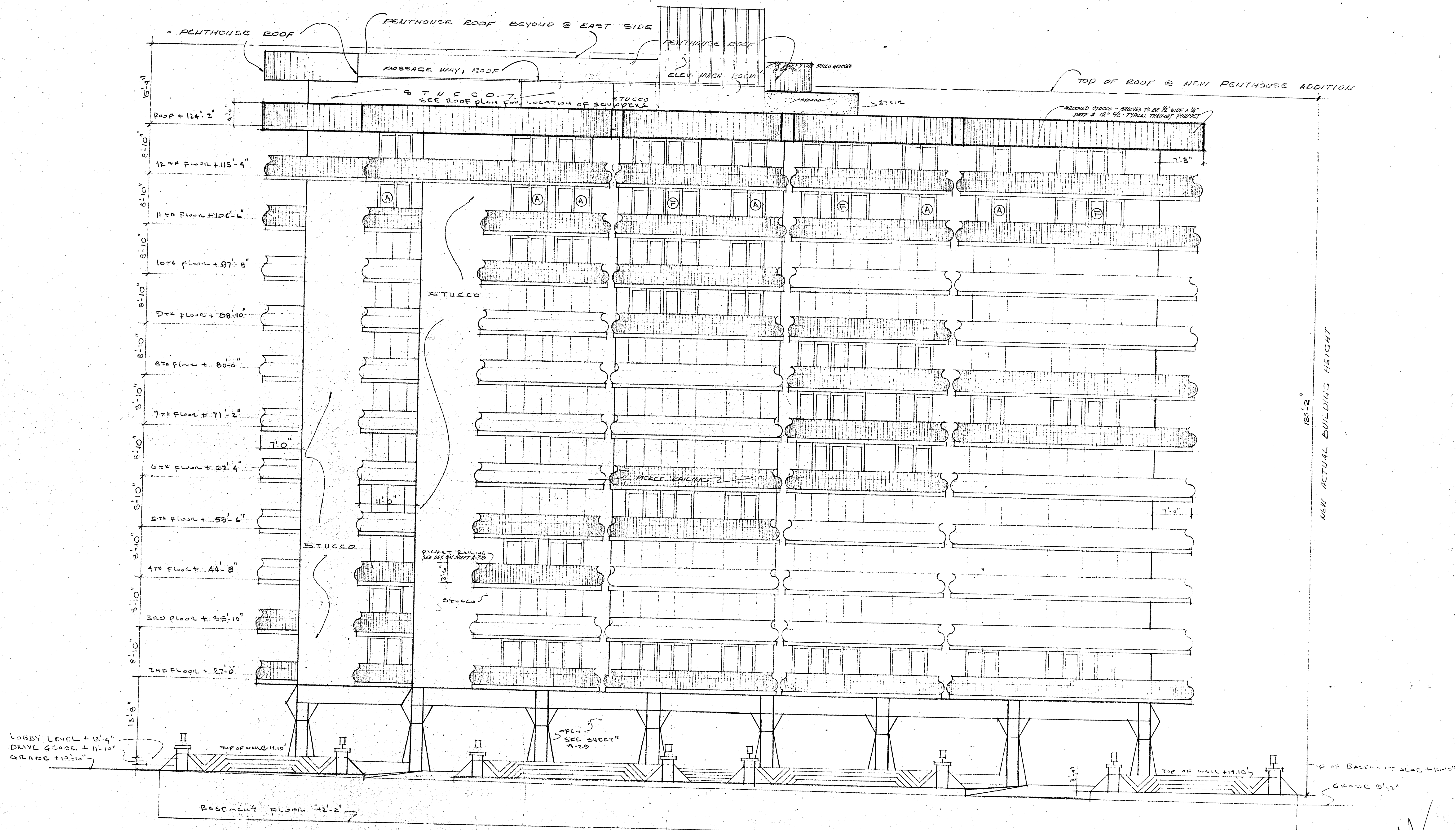
138 S.E. 14TH LANE
3553044

CHAMPLAIN TOWERS SOUTH
27TH COLLINS AVE.

A. 135 UNIT CONDOMINIUM

COMM. NO. 79030 DATE: 3/20/79 SHEET 2 OF 6

REVISED: 5/14/80 4 OF 6
11/27/79



LOBBY LEVEL +13'-4"
 DRIVE GRADE +11'-10"
 GRADE +10'-10"

COLLINS AVE ELEVATION
 1/8" = 1'-0"

135'-2"
 NEW ACTUAL BUILDING HEIGHT

NEW PENTHOUSE ADDITION

WILLIAM M. FRIEDMAN
 AND ASSOCIATES ARCHITECTS, INC.

138 S.E. 14TH LANE
 3588044

CHAMPLAIN TOWERS SOUTH
 8777 COLLINS AVE.
 A: 135 UNIT CONDOMINIUM

COMM. NO. 79030	DATE: 8/20/79	SHEET
	REVISED: 8/14/80 11/27/79	5 OF 6