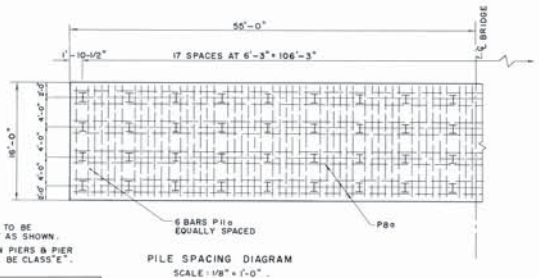


BRIDGE SEAT ELEVATIONS		
GIRDERS	PIER No. 1 & 4	PIER No. 2 & 3
MEDIAN	744.01	745.91
ROADWAY	743.34	745.23
FASCIA	743.30	745.20

DIMENSION	VARIABLE DIMENSIONS	
	PIER No. 1 & 4	PIER No. 2 & 3
"d"	1'-7 3/4"	1'-7"
"e"	6'-8 1/2"	6'-10"
"f" (AT TOP OF FOOTING)	1'-5 3/4"	1'-6 1/2"
"g" (AT TOP OF FOOTING)	7'-6 1/4"	7'-7"
"h" (AT TOP OF FOOTING)	5'-10 1/4"	5'-11"



NOTES:
ALL PILES TO BE 14" - 73#H SECTIONS.
REQUIRED BEARING OF PILES = 60 TONS PER PILE.
SPACING OF PILES IS SYMMETRICAL ABOUT C. OF BRIDGE.



NOTE:
ALL REINFORCING TO BE 2" CLEAR EXCEPT AS SHOWN.
ALL CONCRETE IN PIERS & PIER FOOTINGS SHALL BE CLASS "E".

REVISION 1: FOR PILING AND FOOTER UNDER PIER 1, SEE SHEET NO. 41-A.

REVISIONS		
Date	Character	By
PIER NO. 1		
10-1-55	PILING & FOOTER L.S.	

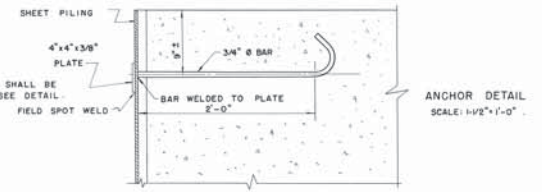
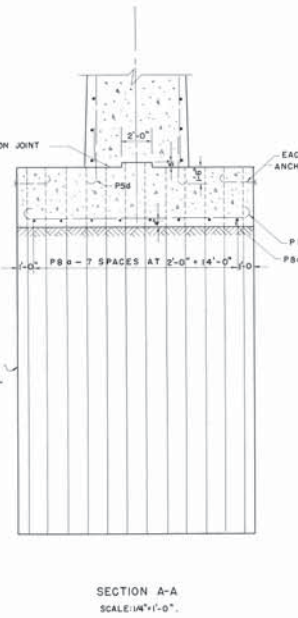
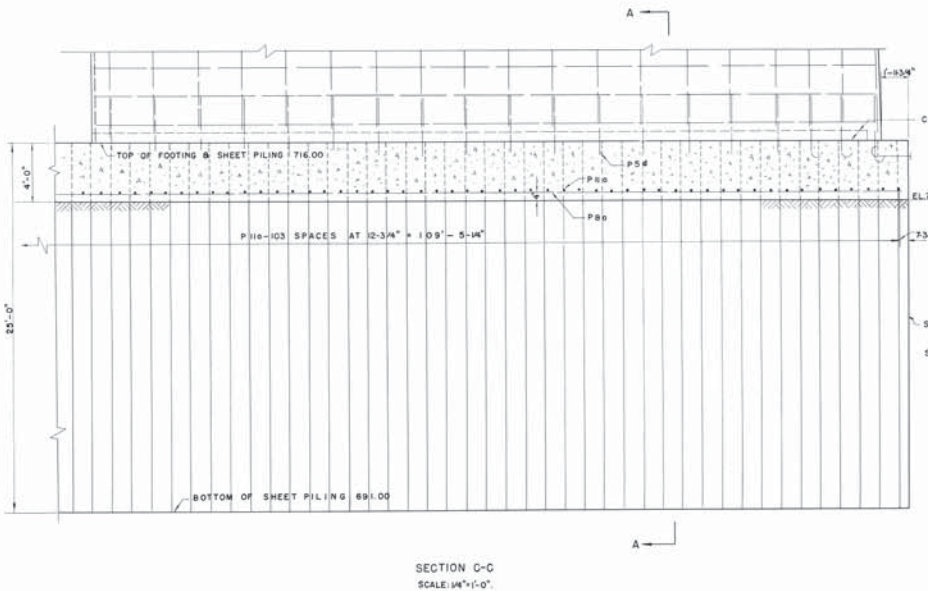
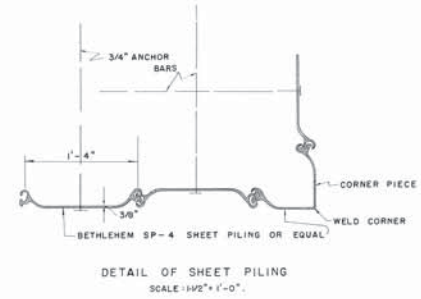
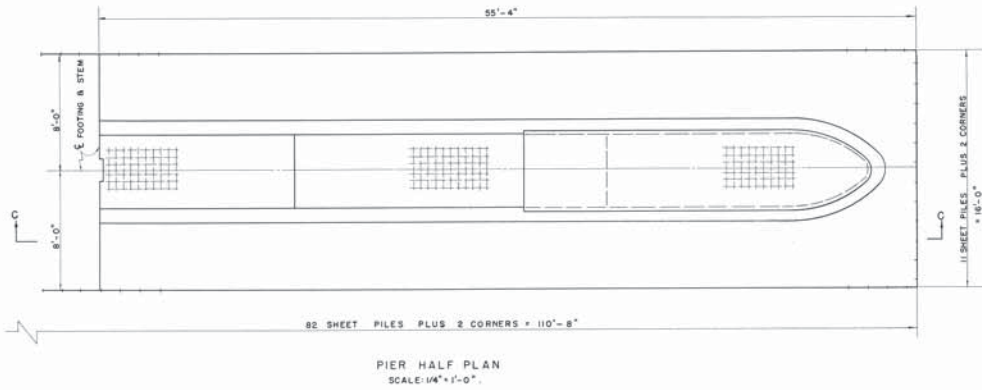
PATTERSON-RIVERSIDE BRIDGE

PIERS

Scale: AS SHOWN Size: 22" x 35" Sheet 41 of 55 Sheets

DEPARTMENT OF SERVICE & BUILDINGS
DIVISION OF ENGINEERING
DAYTON, OHIO.

Design 3-17-53 By J.A.C. Approved: [Signature]
 Froed 3-22-53 By E.H.
 Checked 3-28-53 by CTM/CFS/L.S. City Engineer
 Loose Leaf Drawing No. 2A-9327



NOTES:
FOR STEM & CAP DETAILS SEE SHEET 41
ALL REINFORCING TO BE 2" CLEAR EXCEPT AS SHOWN
ALL CONCRETE IN STEM & FOOTING SHALL BE CLASS "C".

PATTERSON-RIVERSIDE BRIDGE
PIER #1
Scale: AS SHOWN Size: 22" x 35" Sheet 41A of 55 Sheets
DEPARTMENT OF SERVICE & BUILDINGS
DIVISION OF ENGINEERING
DAYTON, OHIO.
Design 9-25-53 By J.A.G. Approved
Traced 9-25-53 By E.H. [Signature]
Checked 9-30-53 By G.F.S., L.S. [Signature] Engineer
Loose Leaf [Signature] Drawing No. 2A-9327