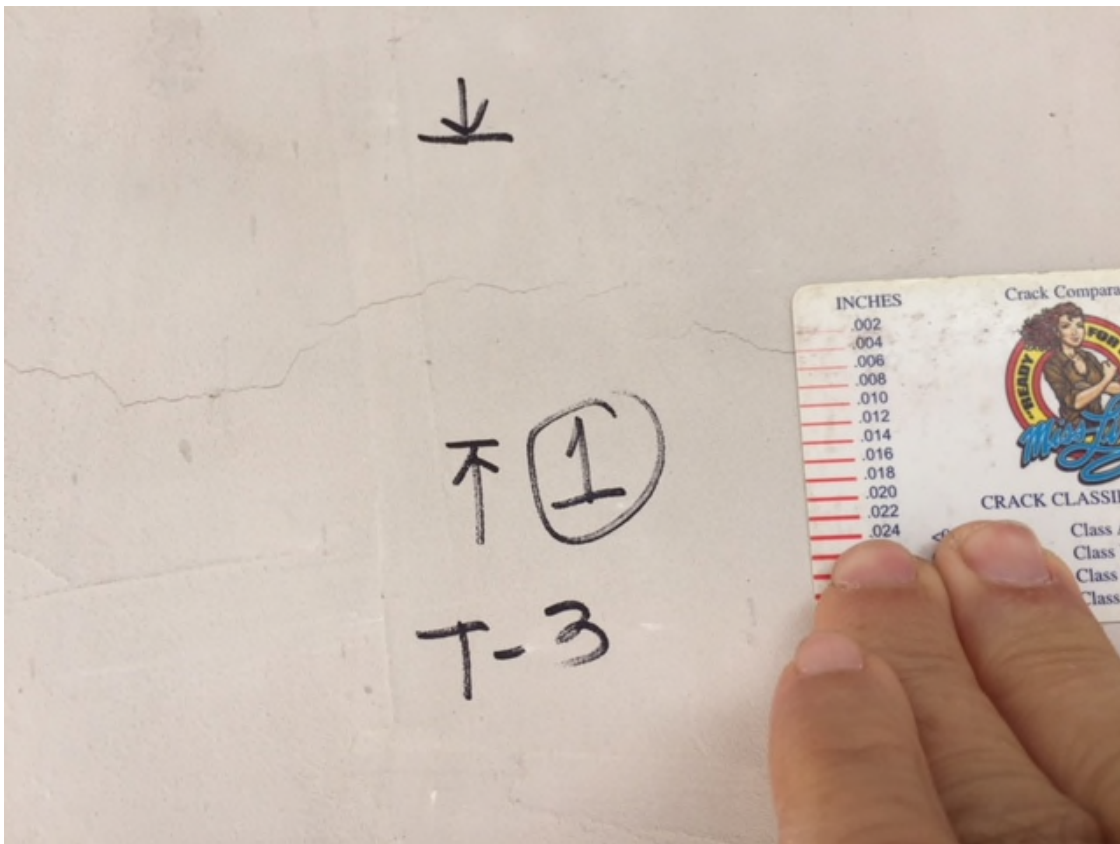


FIU Pedestrian Bridge / BT-904 Crack Inspection Report

Bolton Perez & Associates, serving as the CEI for the project performed a visual inspection of main span truss members on 02-06-18 after PT bars tendons No 2 and No 11 were stressed. Cracks were found at moment of the inspection. These have been identified per truss member and a consecutive number within the member. The intent is to monitor these cracks after the bridge is fully tensioned and the main span is at the final location.

The members showing these small cracks are truss members that share the same blister at the canopy of the already stressed members No 2 (stressed 1/30/18) & No 11 (stressed 1/29/18) . We believe, this first stressing operation has temporarily created tension on members No 3 & No 10; thus, creating cross sectional cracks transferring the tension loads to the steel on these members. No other truss members within span 1 show any cracks similar to these shown on members No 3 & No 10.

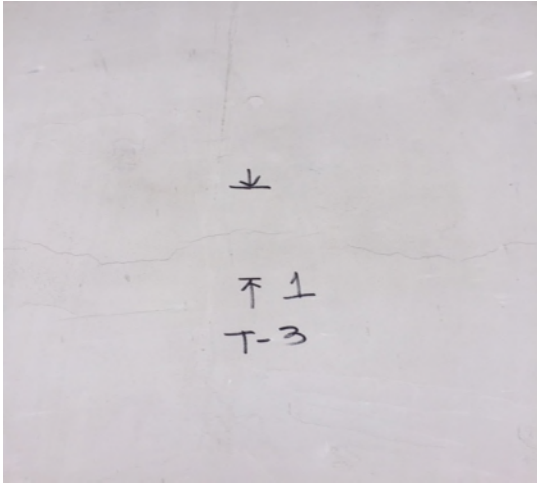
The intent of the report is to inform Design Build Team of these cracks. It is the Design Build responsibility to assess them and determine if these cracks were expected while tensioning and monitor them accordingly if deemed necessary.



FIU Pedestrian Bridge / BT-904
Crack Inspection Report

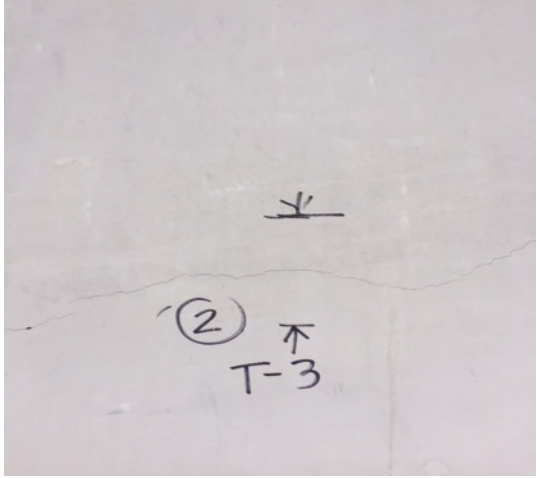
1. Crack T3-1

Location: Truss member No.3, approximately 70 inches measured from the bottom of the member, extended around the cross section.
Classification: Crack type A (<0.007 inches).
Measured: 0.04 inches.



2. Crack T3-2

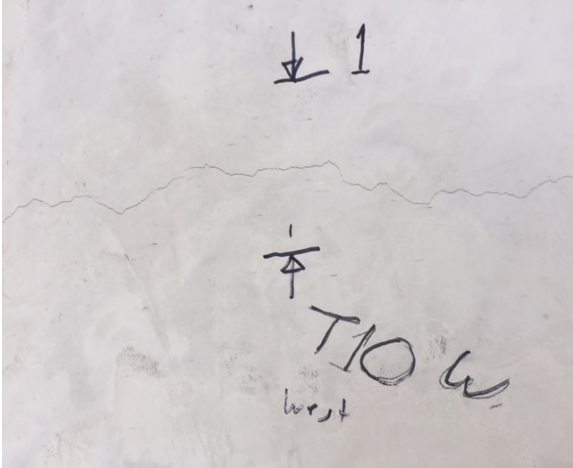
Location: Truss member No.3, approximately 77 inches measured from the bottom of the member, extended around the cross section.
Classification: Crack type A (<0.007 inches).
Measured: 0.04/006 inches.



**FIU Pedestrian Bridge / BT-904
Crack Inspection Report**

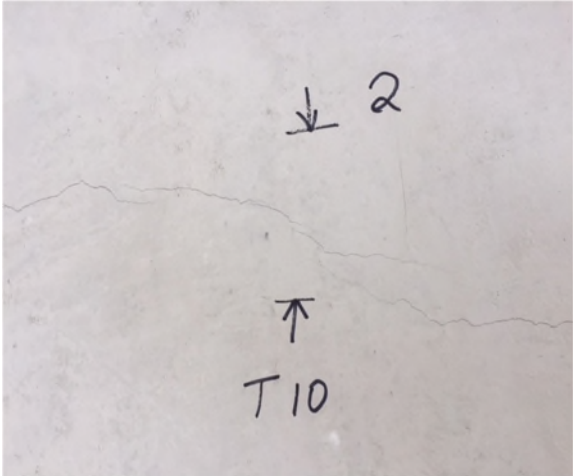
3. Crack T10-1

Location: Truss member No.10, approximately 119 inches measured from the bottom of the member, extended around the cross section.
Classification: Crack type A (<0.007 inches).
Measured: 0.04 inches.



4. Crack T10-2

Location: Truss member No.10, approximately 126 inches measured from the bottom of the member, extended around the cross section.
Classification: Crack type A (<0.007 inches).
Measured: 0.04 inches.



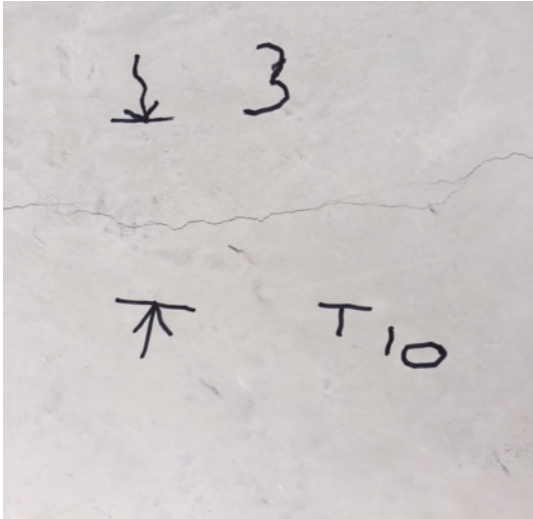
**FIU Pedestrian Bridge / BT-904
Crack Inspection Report**

5. Crack T10-3

Location: Truss member No.10, approximately 150 inches measured from the bottom of the member, extended around the cross section.

Classification: Crack type A (<0.007 inches).

Measured: 0.04 inches.



6. Crack T10-4

Location: Truss member No.10, approximately 168 inches measured from the bottom of the member, extended around the cross section.

Classification: Crack type A (<0.007 inches).

Measured: 0.04 inches.

