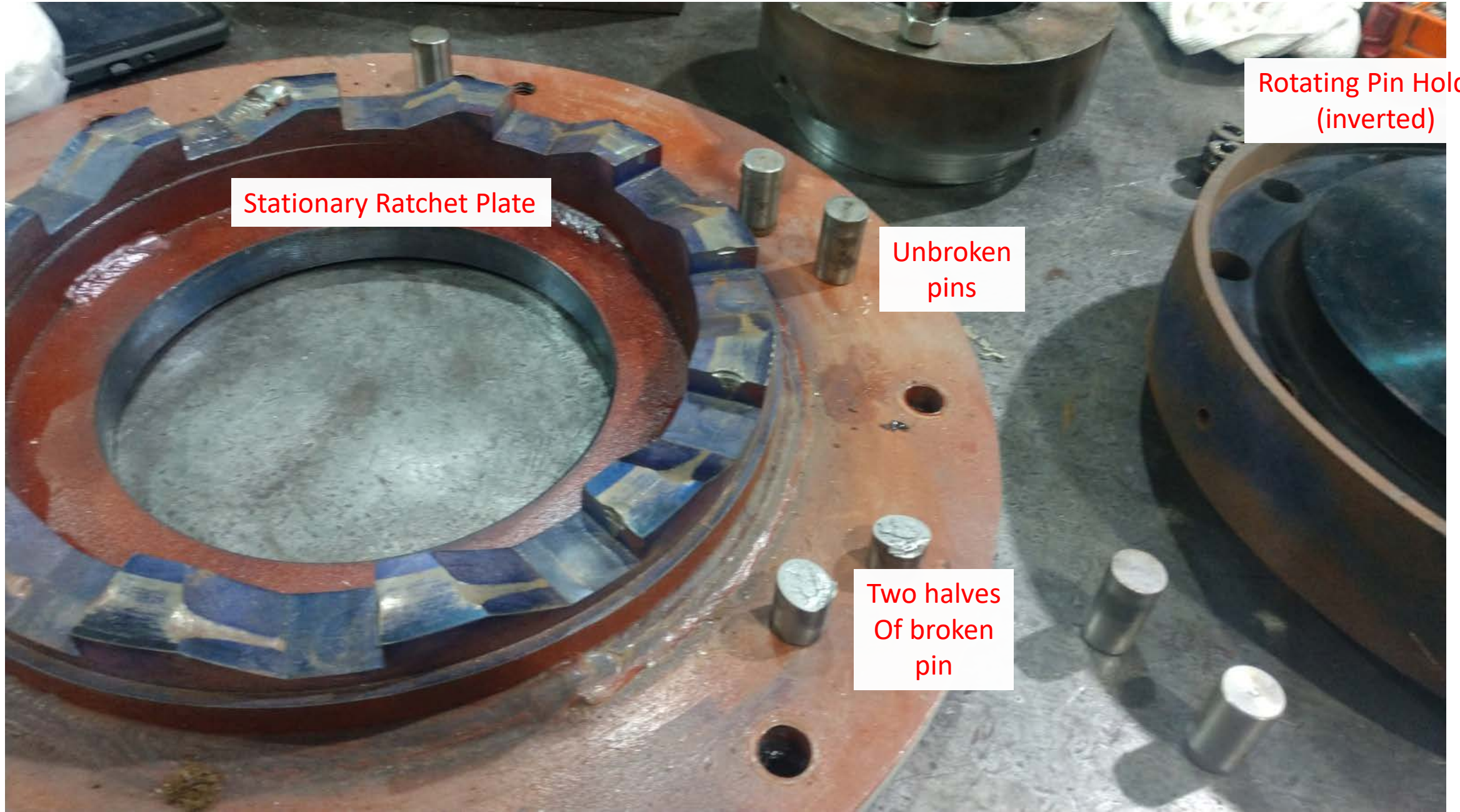


Overview



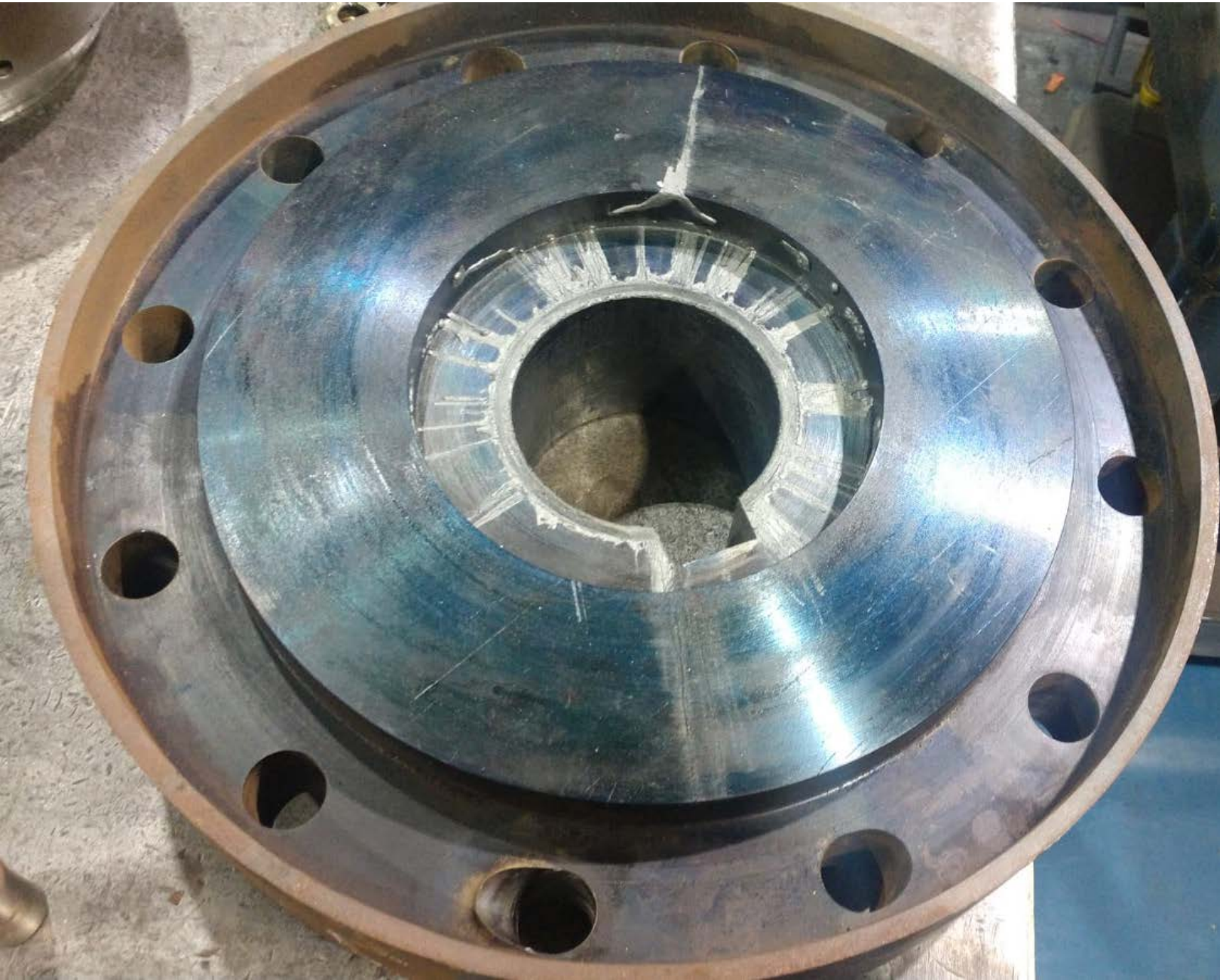
Stationary Ratchet Plate

Rotating Pin Holder
(inverted)

Unbroken
pins

Two halves
Of broken
pin

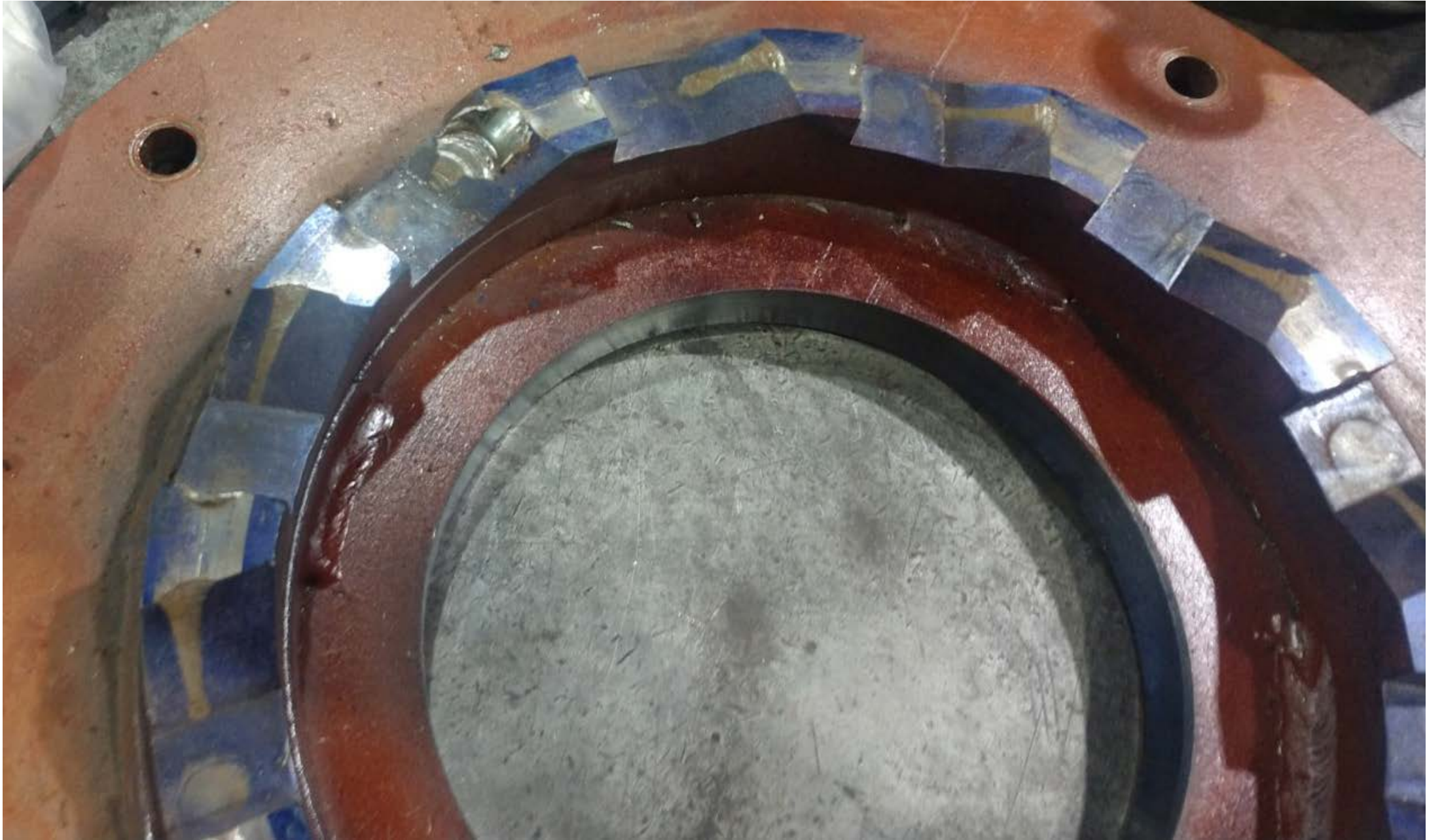
Rotating Pin-holder (inverted)



Closer view of Rotating pin-holder (inverted).
One hole is damaged



Stationary Ratchet Plate



Closer view of stationary ratchet plate



Pins. Broken (left), unbroken (right).

