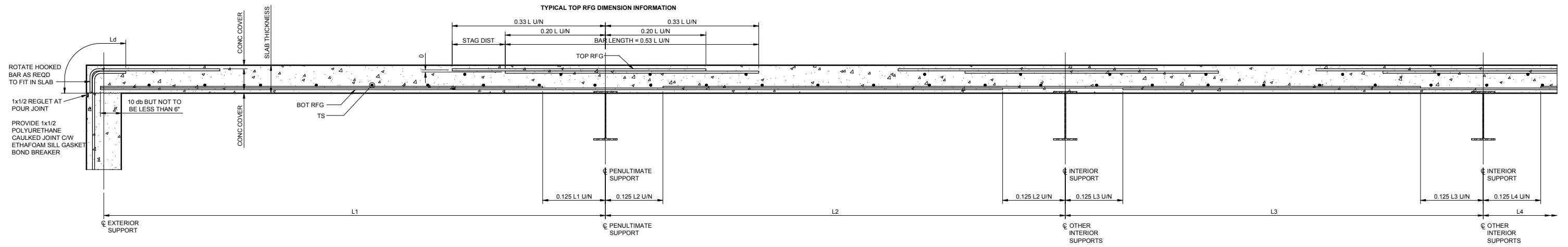


TYPICAL ONE WAY SLAB SUPPORTED ON CONC BEAMS
NTS

NOTES
 PLACE REBAR FOR ONE WAY SLABS AS SHOWN U/N
 L = MAX LENGTH OF SPAN ON EITHER SIDE OF SUPPORT
 L TO BE BASED ON CLEAR SPANS FOR CONCRETE BEAMS
 AND CENTRE TO CENTRE OF SPANS FOR STEEL BEAMS
 STAGGER TOP BARS AS SHOWN
 PROVIDE SUPPORT BARS AND CHAIRS TO CSA A23
 PROVIDE TS EQUAL TO 0.2% OF SLAB AREA
 TS SPACING TO BE 3 TIMES SLAB THICKNESS BUT NOT TO EXCEED 24"
 WHERE MIN EMBEDMENT IS NOT POSSIBLE, PROVIDE 90° HOOK
 PROVIDE CLASS 'B' TENSION LAP SPLICE FOR BOT RFG AND TS U/N



TYPICAL ONE WAY SLAB SUPPORTED ON STEEL BEAMS
NTS

NOTES
 PLACE REBAR FOR ONE WAY SLABS AS SHOWN U/N
 L = MAX LENGTH OF SPAN ON EITHER SIDE OF SUPPORT
 L TO BE BASED ON CLEAR SPANS FOR CONCRETE BEAMS
 AND CENTRE TO CENTRE OF SPANS FOR STEEL BEAMS
 STAGGER TOP BARS AS SHOWN
 PROVIDE SUPPORT BARS AND CHAIRS TO CSA A23
 PROVIDE TS EQUAL TO 0.2% OF SLAB AREA
 TS SPACING TO BE 3 TIMES SLAB THICKNESS BUT NOT TO EXCEED 24"
 WHERE MIN EMBEDMENT IS NOT POSSIBLE, PROVIDE 90° HOOK
 PROVIDE CLASS 'B' TENSION LAP SPLICE FOR BOT RFG AND TS U/N

