

# Configuring a BES 110 & 120

## Overview

This document explains how to configure a Business Ethernet Switch (BES) as part of a BCM LAN Bundle.

The document will cover configuration for the following Switches:-

- 1: BES 110-24 & 48T
- 2: BES 120-24 & 48T-PWR

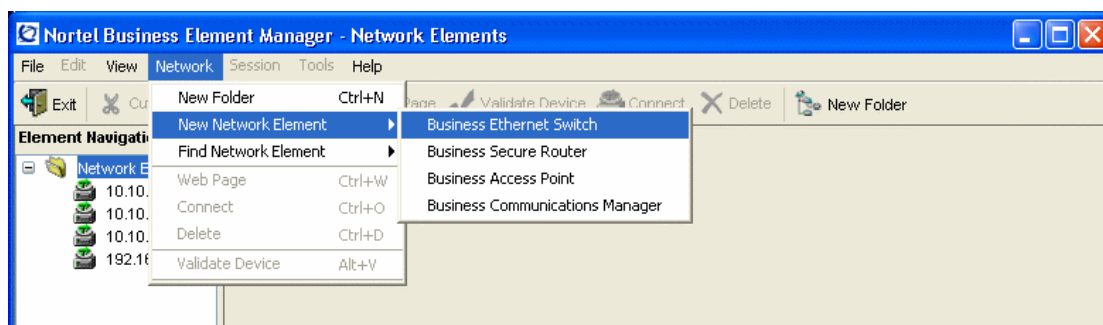
The Objectives are to set-up IP addressing, basic system information and QOS to support VoIP Clients.

## Set-up

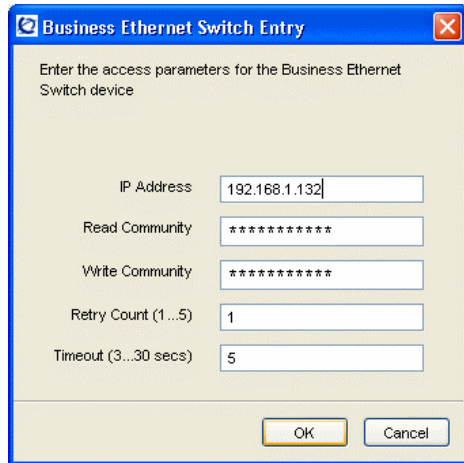
The set-up of the LAN Switches is done through Business Element Manager (BEM). *Please note that the console port is not functional on these switches.*

Ensure BEM is installed on your Laptop. BEM is backwards compatible with BCM50 etc so remove any existing installations of Element Manager before installing the new version.

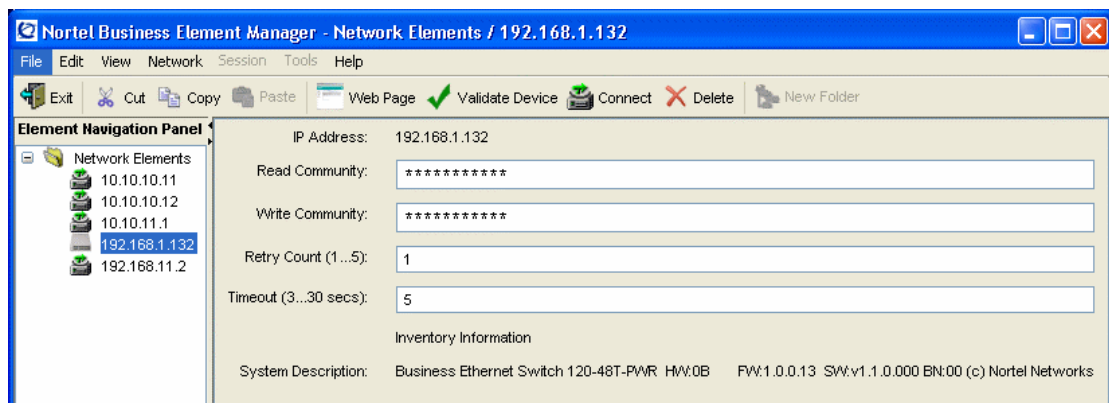
1. Your Laptop will need to be in the same Subnet as the BES, so set the IP address on your Laptop to 192.168.1.200
2. Open BEM and create a new network Element



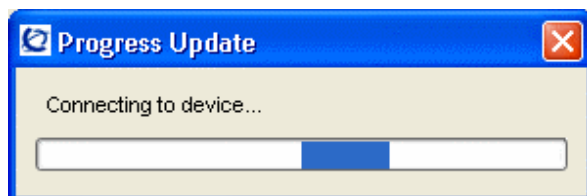
3. Enter the IP address of the BES and click OK. *Note the default is (192.168.1.132), however if you have connected the BES to a network running DHCP it will pick up an IP address automatically. If this is the case, remove from the network and power reset the BES.*



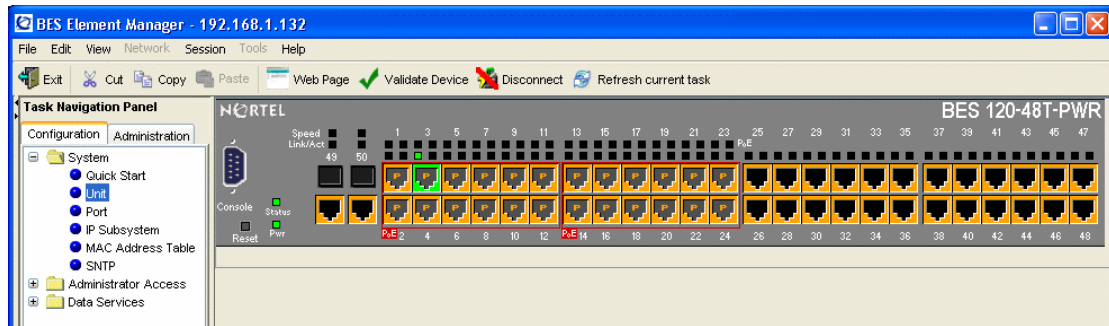
The BES will be added to the Network Elements



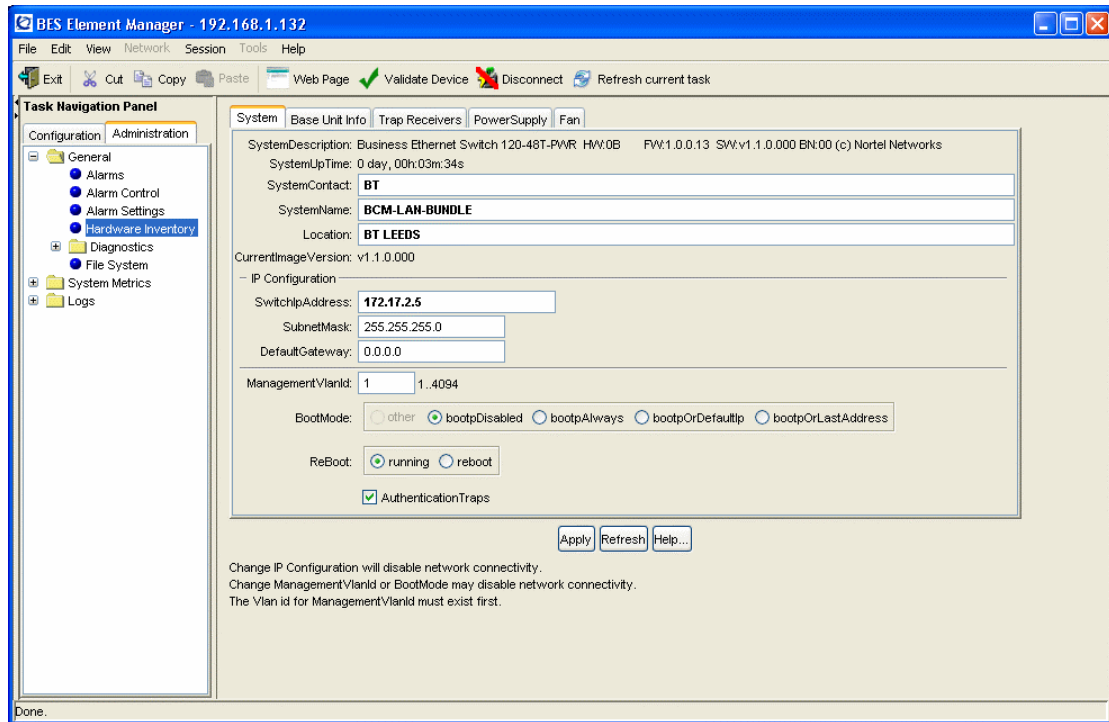
4. Click Connect and Element Manager will attempt connection to the BES.



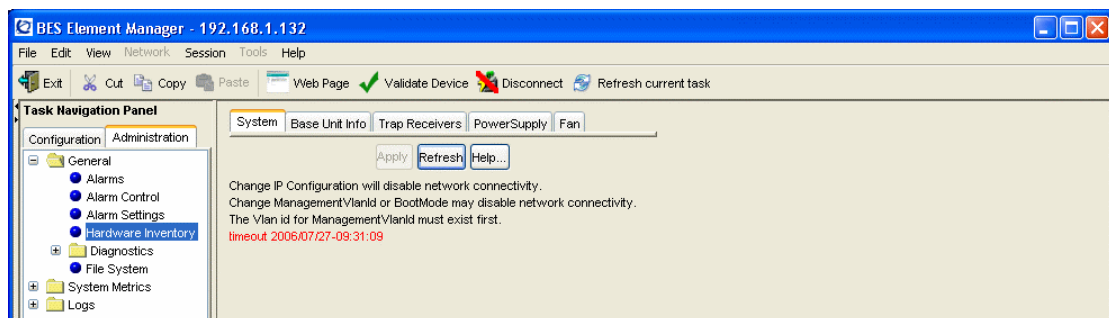
Once successfully connected the following view will be shown with the configuration tree down the left hand side.



5. Follow the Administration Tab -> General -> Hardware Inventory. Configure the system information (as shown below) and configure the switch IP address with the relevant IP addressing, once configured correctly click Apply.

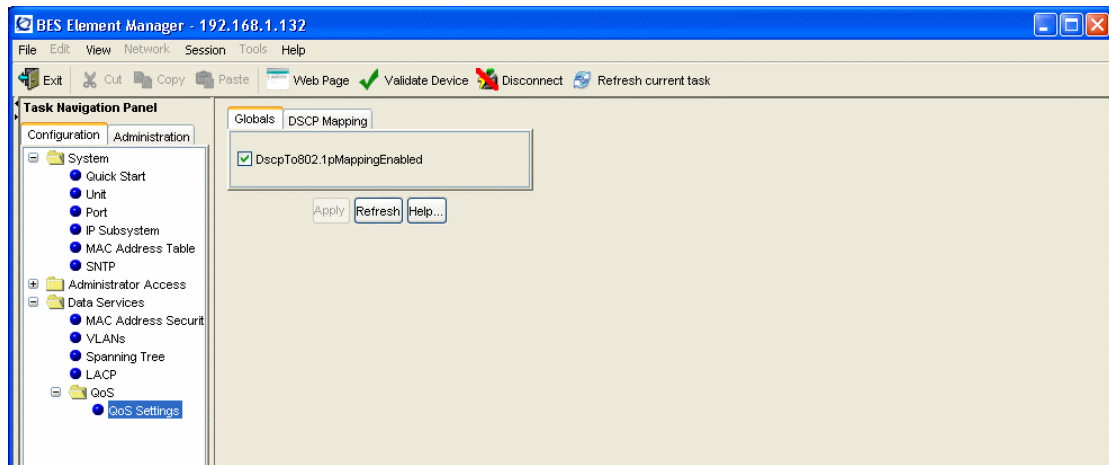


6. Once you have clicked Apply the following confirmation will be shown. If you have changed the IP address, ensure you configure your laptop accordingly and reconnect to the BES. Remember you will need to create a new network element if the IP address has been changed

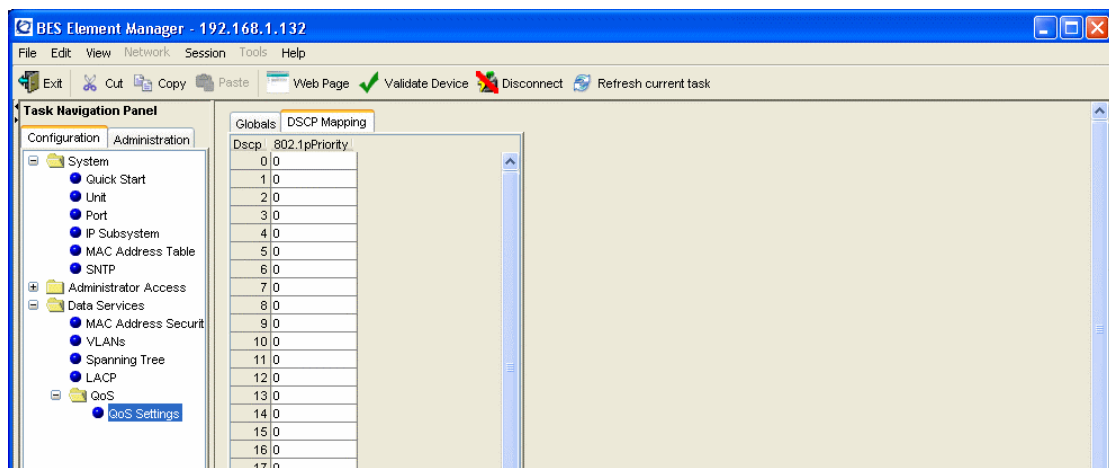


7. Once reconnected click:

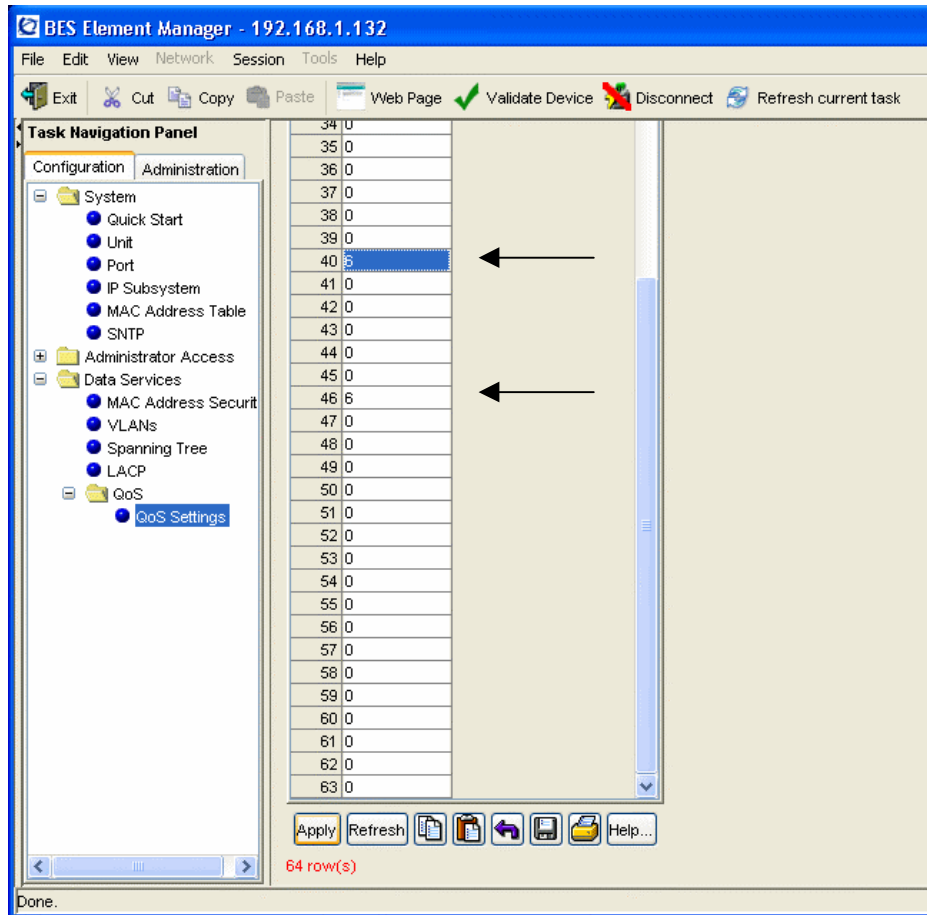
Configuration Tab -> Data Services -> QoS -> QoS Settings and ensure that the DSCPTo802.1pMappingEnabled is ticked.



8. Navigate to the DSCP Mapping Tab



- Configure the DSCP 40 and 46 to the 802.1p Value of 6 and click apply as shown below.



- The Lan Switch is now configured.