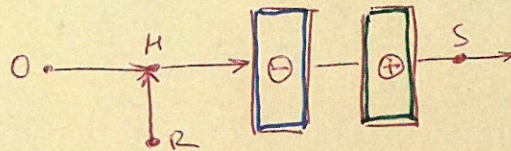


- O - OUTSIDE AIR (28°C , 80% RH)
- R - ROOM CONDITION (21°C , 50% RH)
- M - MIXING POINT (20% FRESH AIR)
- * - CHILLED WATER COIL TEMP. 7°C



Based on a barometric pressure of 101 325 kPa

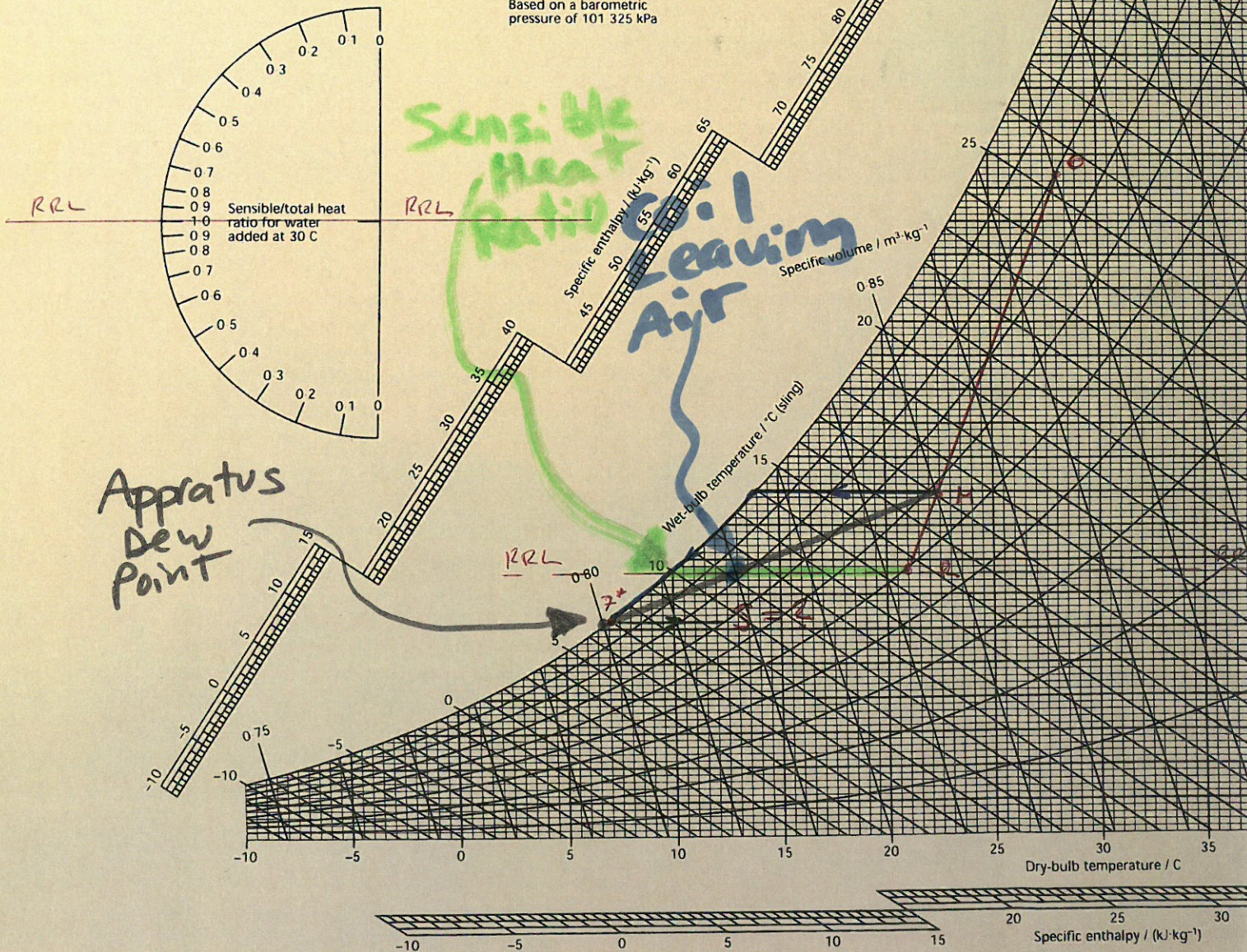


Figure 1.2 CIBSE psychrometric chart (-10 to $+60\text{ }^{\circ}\text{C}$)