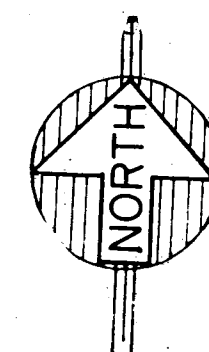


FOR CONTINUATION
SEE DWG. P-1

NOTE: HYDRAULICALLY CALCULATED FIRE SPRINKLER
SYSTEM SIZED FOR ORDINARY HAZARD OCCUPANCY

GARAGE LEVEL-FLOOR PLAN
SCALE: 3/32"=1'-0"



NOTE: TAMPER SWITCHES & FLOW SWITCHES
TO BE FURNISHED BY FIRE SPRINKLER
CONTRACTOR & INSTALLED BY ELECT. CONTRACTOR.

**WILLIAM M. FRIEDMAN
AND ASSOCIATES ARCHITECTS, INC.**

138 S.E. 14TH LANE
3588044

CHAMPLAIN TOWERS SOUTH

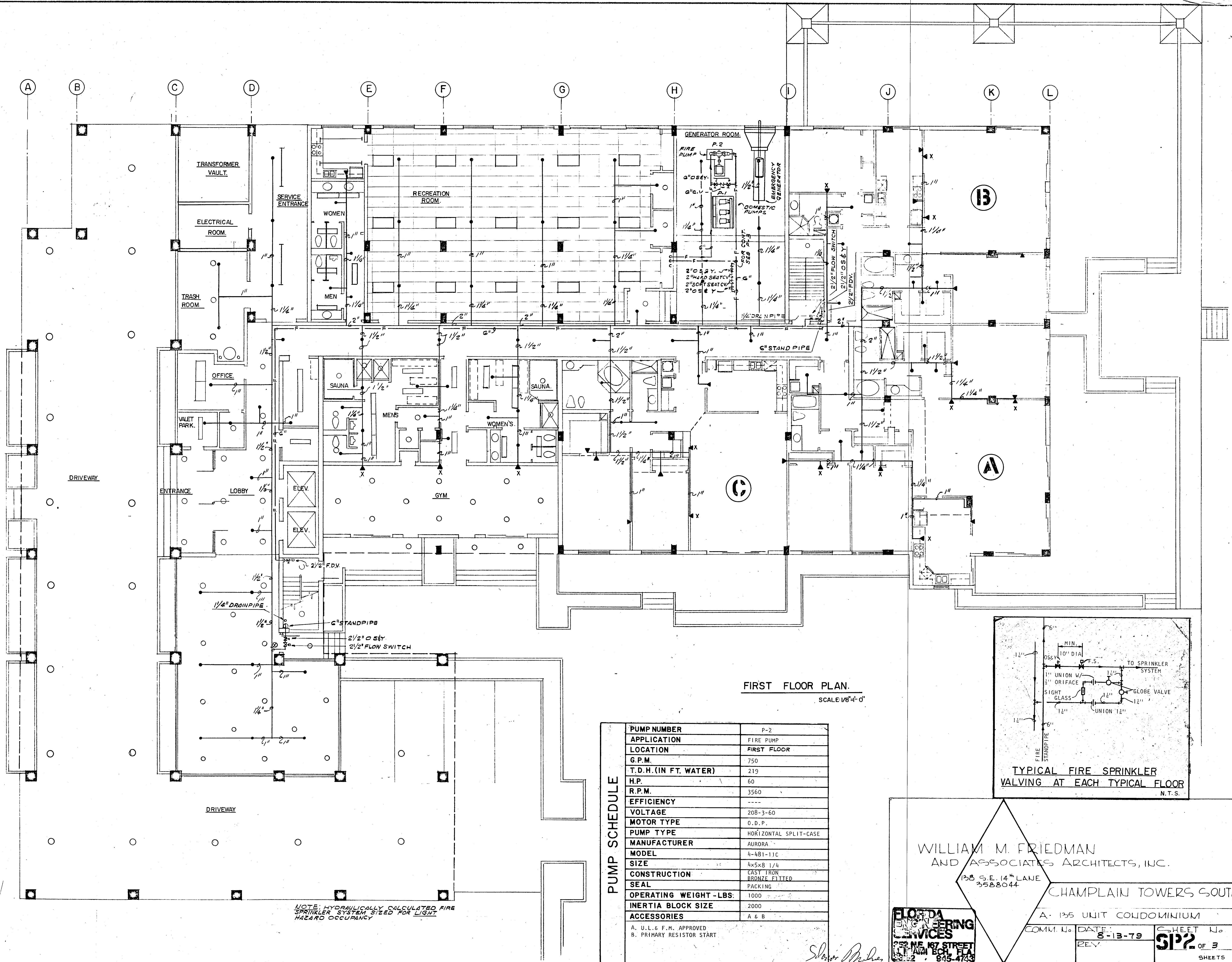
A- 135 UNIT CONDOMINIUM

COMM. No.	DATE: 8-13-79	SHEET No. SP-1 OF 3
REV.		SHEETS

Salomon Dwyer
8/13/79

FIRE SPRINKLER NOTES.

1. ALL FIRE SPRINKLER WORK SHALL BE DONE ACCORDING TO LATEST N.F.P.A. STATE AND LOCAL CODES AND ORDINANCES.
2. CONTRACTOR SHALL PAY ALL FEES, INSPECTIONS AND CONNECTION CHARGES REQUIRED.
3. SPRINKLER CONTRACTOR SHALL VERIFY ALL SPACE CONDITIONS AND DIMENSIONS AT JOB SITE PRIOR TO FABRICATION AND INSTALLATION OF MATERIALS AND EQUIPMENT.
4. COORDINATE WORK WITH OTHER TRADES.
5. SUBMIT SHOP DRAWINGS TO ENGINEER FOR APPROVAL OF ALL EQUIPMENT, MATERIALS, LAYOUTS, AND CALCULATIONS, PRIOR TO INSTALLATION.
6. SPRINKLER CONTRACTOR SHALL GUARANTEE ALL WORK FREE OF DEFECTS IN MATERIAL AND WORKMANSHIP FOR A PERIOD OF ONE YEAR FROM DATE OF ACCEPTANCE.
7. SPRINKLER LEGEND:
 - PENDANT OR UPRIGHT SPRINKLER HEAD
 - ▲ SIDE WALL SPRINKLER HEAD
 - ▲X SIDE WALL EXTENDED COVERAGE SPRINKLER HEAD
 - ⚡ FLOW SWITCH
 - ⚡ CHECK VALVE
 - ⚡ O.S. & Y VALVE
 - FIRE LINE
 - COLD WATER LINE
 - PRESSURE GAGE
 - F.H.C. FIRE HOSE CABINET
 - F.D.V. FIRE DEPARTMENT VALVE
 - SPK. SPRINKLER
 - F.D.C. FIRE DEPARTMENT CONNECTION
 - CONCENTRIC REDUCER
 - ECCENTRIC REDUCER
8. FIRE LINES (INCLUDING FIRE SPRINKLER LINES)
 1. UNDERGROUND: ALL PIPING SHALL BE CEMENT MORTAR LINED DUCTILE IRON PIPE CLASS 150, WITH HOT COAL TAR DIPPED EXTERIOR.
 2. ABOVE GROUND: ALL PIPING SHALL BE SCHEDULE 40 BLACK STEEL PIPE AND FITTINGS. PIPES 3" AND LARGER SHALL BE WELDED OR VICTAULIC PIPE FITTINGS. PIPES 2 1/2" AND SMALLER SHALL BE SCREWED PIPE AND FITTINGS.
9. VALVES
 - GATE VALVES: UNDERGROUND - STOCKHAM: G636 OR JENKINS 836 FOR ABOVE SLAB 4" AND LARGER IN SIZE USE: STOCKHAM: G634, CRANE: 467, JENKINS: 825A FOR ABOVE SLAB 3" AND SMALLER IN SIZE USE: STOCKHAM: G608, CRANE: 460, JENKINS: 325
 - FIRE LINE CHECK VALVES 4" AND LARGER IN SIZE USE: STOCKHAM: G933 OR JENKINS: 728.
 - FIRE DEPARTMENT VALVE: ON 6" RISERS USE 2 1/2" HOSE VALVE WITH CAP AND CHAIN. ALLENCO MODEL 170.
 - SIAMSE CONNECTION: 2 1/2" x 2 1/2" x 6" EXPOSED WALL SIAMSE CONNECTION. CAST BRASS, INDEPENDENT DROP CLAPPERS, PLUGS AND CHAINS, AND ESCUTCHEON LETTERED "COMBINATION STANDPIPE AND AUTO SPKR" ALLENCO MODEL 270.
 - ROOF MANIFOLD: 2 1/2" x 2 1/2" x 6" CAST BRASS ROOF MANIFOLD, TWO OUTLETS WITH APPROVED ANGLE VALVE, BRASS CAPS AND CHAINS, ALLENCO MODEL 439.
10. SPRINKLER HEADS:
 1. PENDANT SPRINKLERS IN PUBLIC AREAS-GEM BULLETIN NO. 304 CEILING HEAD WITH ALL CHROME CONSTRUCTION INCLUDING CEILING FLANGE.
 2. PENDANT SPRINKLERS IN AREAS WITH NO CEILING - GEM BULLETIN NO. 309 STAINLESS STEEL
 3. SIDE WALL IN APT. & PUBLIC AREAS-GEM BULL. NO. 303 ALL CHROME PLATED WITH WALL PLATE.
 4. SIDE WALL IN STORAGE, BOILER ROOM, ETC., - GEM BULLETIN NO. 303.
 5. EXTENDED COVERAGE HEADS - CENTRAL SPRINKLER CORP. MODEL HF-17/32, POLISHED CHROME WITH WALL PLATE.
11. TESTS:
 - WATER PIPING: TEST TO 150 PSIG.



WILLIAM M. FRIEDMAN
AND ASSOCIATES ARCHITECTS, INC.
138 S.E. 14TH LANE
3588044

CHAMPLAIN TOWERS SOUTH
A. 135 UNIT CONDOMINIUM

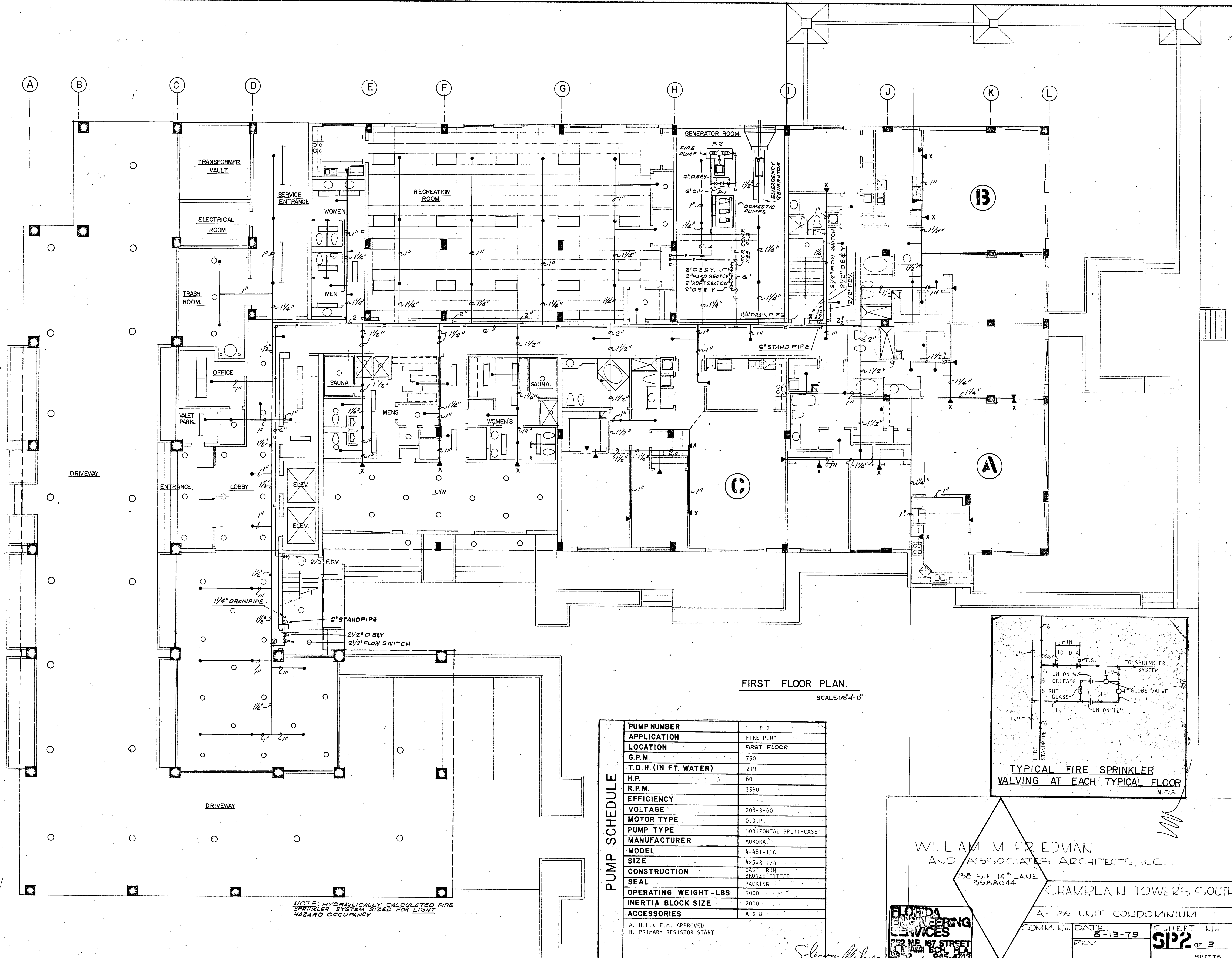
COMM. 11. DATE: 8-13-79 SHEET NO. 312 OF 3
REV. 8/13/79

FLORIDA ENGINEERING SERVICES
301 NE 1ST STREET
SUITE 200
MIAMI, FL 33132

FIRE SPRINKLER NOTES.

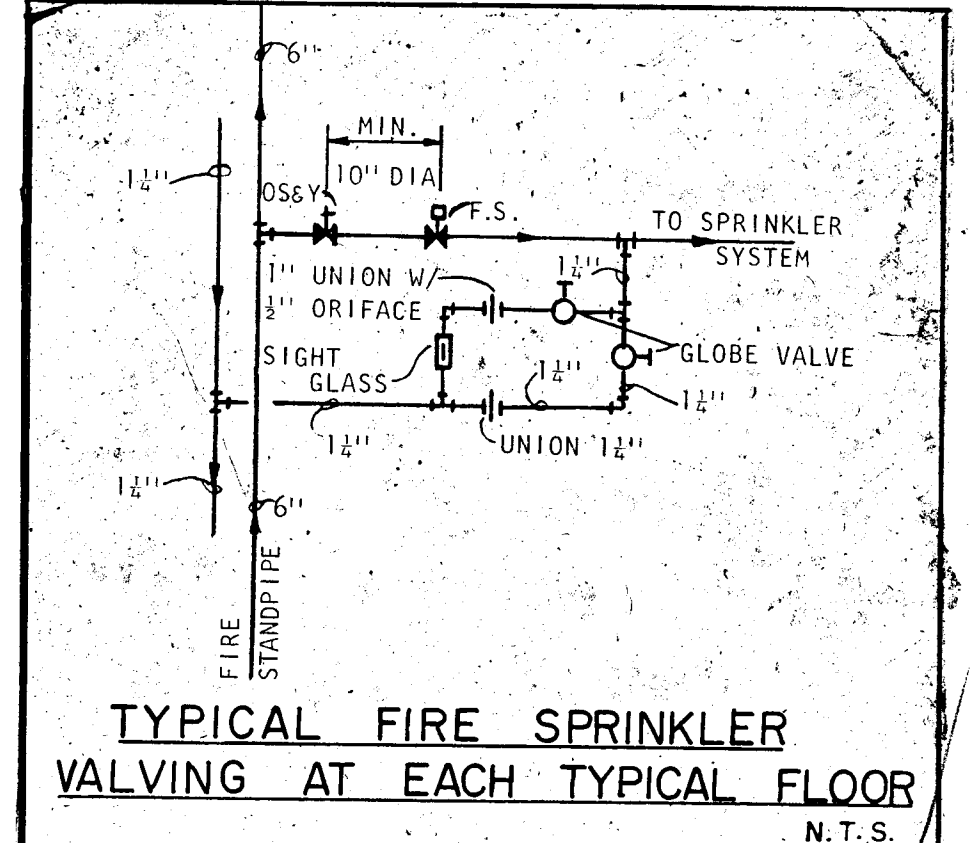
- ALL-FIRE SPRINKLER WORK SHALL BE DONE ACCORDING TO LATEST N.F.P.A. STATE AND LOCAL CODES AND ORDINANCES.
- CONTRACTOR SHALL PAY ALL FEES, INSPECTIONS AND CONNECTION CHARGES REQUIRED.
- SPRINKLER CONTRACTOR SHALL VERIFY ALL SPACE CONDITIONS AND DIMENSIONS AT JOB SITE PRIOR TO FABRICATION AND INSTALLATION OF MATERIALS AND EQUIPMENT.
- COORDINATE WORK WITH OTHER TRADES.
- SUBMIT SHOP DRAWINGS TO ENGINEER FOR APPROVAL OF ALL EQUIPMENT, MATERIALS, LAYOUTS, AND CALCULATIONS, PRIOR TO INSTALLATION.
- SPRINKLER CONTRACTOR SHALL GUARANTEE ALL WORK FREE OF DEFECTS IN MATERIAL AND WORKMANSHIP FOR A PERIOD OF ONE YEAR FROM DATE OF ACCEPTANCE.
- SPRINKLER LEGEND:
 - PENDANT OR UPRIGHT SPRINKLER HEAD
 - SIDE WALL SPRINKLER HEAD
 - SIDE WALL EXTENDED COVERAGE SPRINKLER HEAD
 - FLOW SWITCH
 - CHECK VALVE
 - O.S. & Y. VALVE
 - FIRE LINE
 - COLD WATER LINE
 - PRESSURE GAGE
 - F.H.C. FIRE HOSE CABINET
 - F.D.V. FIRE DEPARTMENT VALVE
 - SPK. SPRINKLER
 - F.D.C. FIRE DEPARTMENT CONNECTION
 - CONCENTRIC REDUCER
 - ECCENTRIC REDUCER
- FIRE LINES (INCLUDING FIRE SPRINKLER LINES)
 - UNDERGROUND: ALL PIPING SHALL BE CEMENT MORTAR LINED DUCTILE IRON PIPE CLASS 150, WITH HOT COAL TAR DIPPED EXTERIOR.
 - ABOVE GROUND: ALL PIPING SHALL BE SCHEDULE 40 BLACK STEEL PIPE AND FITTINGS. PIPES 3" AND LARGER SHALL BE WELDED OR VICTAULIC PIPE FITTINGS. PIPES 2 1/2" AND SMALLER SHALL BE SCREWED PIPE AND FITTINGS.
- VALVES

GATE VALVES:
UNDERGROUND - STOCKHAM: G636 OR JENKINS 836
FOR ABOVE SLAB 4" AND LARGER IN SIZE USE: STOCKHAM: G634, CRANE: 467, JENKINS: 825A
FOR ABOVE SLAB 3" AND SMALLER IN SIZE USE: STOCKHAM: G608, CRANE: 460, JENKINS: 325
FIRE LINE CHECK VALVES 4" AND LARGER IN SIZE USE: STOCKHAM: G933 OR JENKINS: 728.
FIRE DEPARTMENT VALVE:
ON 6" RISERS USE 2 1/2" HOSE VALVE WITH CAP AND CHAIN. ALLENCO MODEL 170.
SIAMESE CONNECTION:
2 1/2" x 2 1/2" x 6" EXPOSED WALL SIAMESE CONNECTION. CAST BRASS, INDEPENDENT DROP CLAPPERS, PLUGS AND CHAINS, AND ESCUTCHEON LETTERED "COMBINATION STANDPIPE AND AUTO SPRK" ALLENCO MODEL 270.
ROOF MANIFOLD:
2 1/2" x 2 1/2" x 6" CAST BRASS ROOF MANIFOLD, TWO OUTLETS WITH APPROVED ANGLE VALVE, BRASS CAPS AND CHAINS, ALLENCO MODEL 439.
- SPRINKLER HEADS:
 - PENDANT SPRINKLERS IN PUBLIC AREAS-GEN BULLETIN NO. 304 CEILING HEAD WITH ALL CHROME CONSTRUCTION INCLUDING CEILING FLANGE.
 - PENDANT SPRINKLERS IN AREAS WITH NO CEILING - GEN BULLETIN NO. 309 STAINLESS STEEL
 - SIDE WALL IN APT. & PUBLIC AREAS-GEN BULL. NO. 303 ALL CHROME PLATED WITH WALL PLATE.
 - SIDE WALL IN STORAGE, BOILER ROOM, ETC., - GEN BULLETIN NO. 303.
 - EXTENDED COVERAGE HEADS - CENTRAL SPRINKLER COR2 MODEL HF-17/32, POLISHED CHROME WITH WALL PLATE.
- TESTS:
WATER PIPING: TEST TO 150 PSIG.



FIRST FLOOR PLAN.
SCALE: 1/8" = 1'-0"

PUMP SCHEDULE	PUMP NUMBER	P-2
	APPLICATION	FIRE PUMP
	LOCATION	FIRST FLOOR
	G.P.M.	750
	T.D.H. (IN FT. WATER)	219
	H.P.	60
	R.P.M.	3560
	EFFICIENCY	-----
	VOLTAGE	208-3-60
	MOTOR TYPE	O.D.P.
	PUMP TYPE	HORIZONTAL SPLIT-CASE
	MANUFACTURER	AURORA
	MODEL	4-481-11C
	SIZE	4x5x8 1/4
	CONSTRUCTION	CAST IRON
	SEAL	BRONZE FITTED
	PACKING	PACKING
	OPERATING WEIGHT -LBS.	1000
	INERTIA BLOCK SIZE	2000
	ACCESSORIES	A & B
	A. U.L. & F.M. APPROVED B. PRIMARY RESISTOR START	

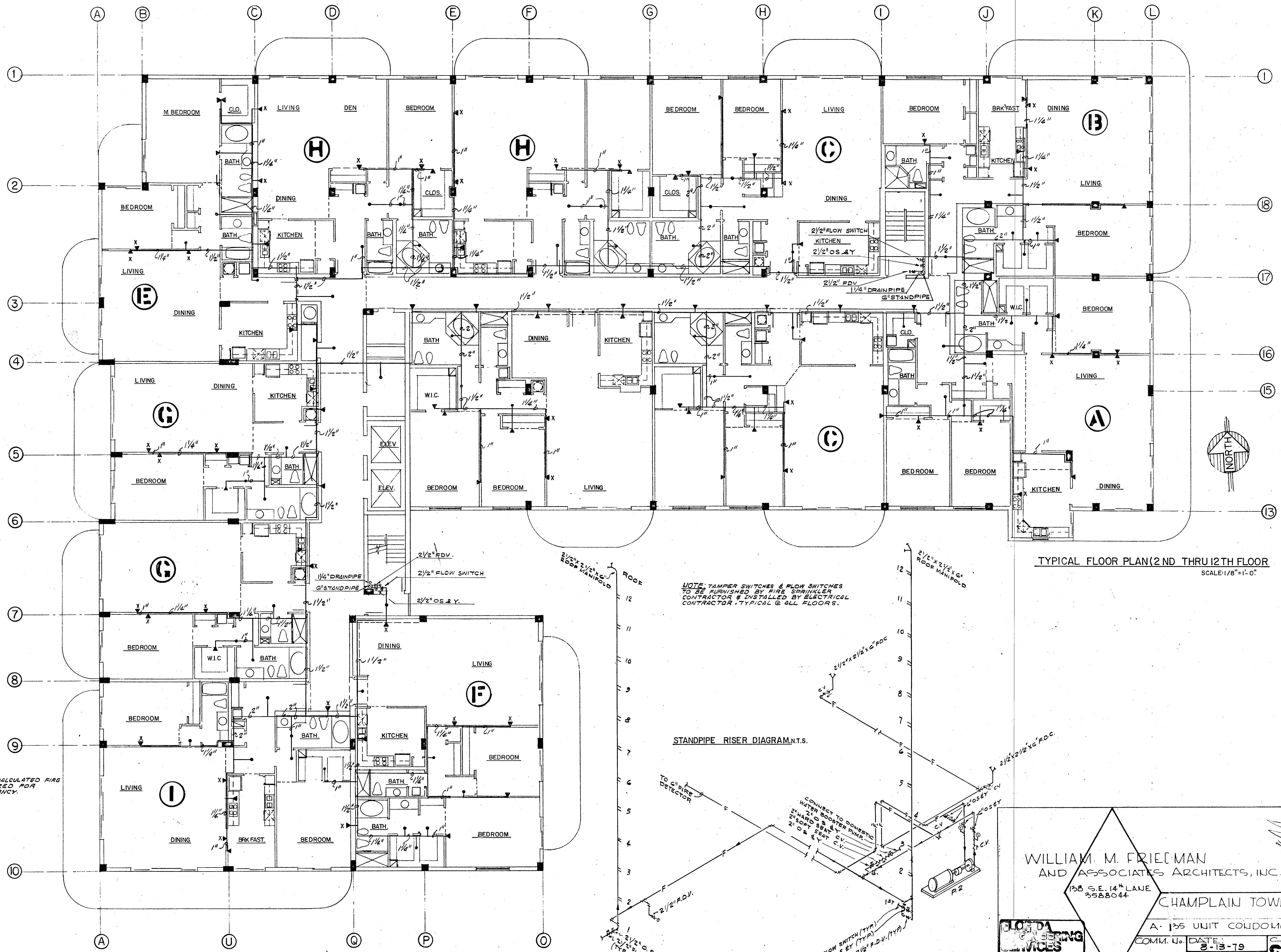


WILLIAM M. FRIEDMAN
AND ASSOCIATES ARCHITECTS, INC.
138 S.E. 14TH LANE
3588044

CHAMPLAIN TOWERS SOUTH
A-135 UNIT CONDOMINIUM
COMM. NO. DATE: 8-13-79
REV: 9/7/79

FLORIDA ENGINEERING SERVICES
222 N.E. 47 STREET
FORT LAUDERDALE, FLA. 33301
845-4743

SHEET No. 32 OF 3 SHEETS

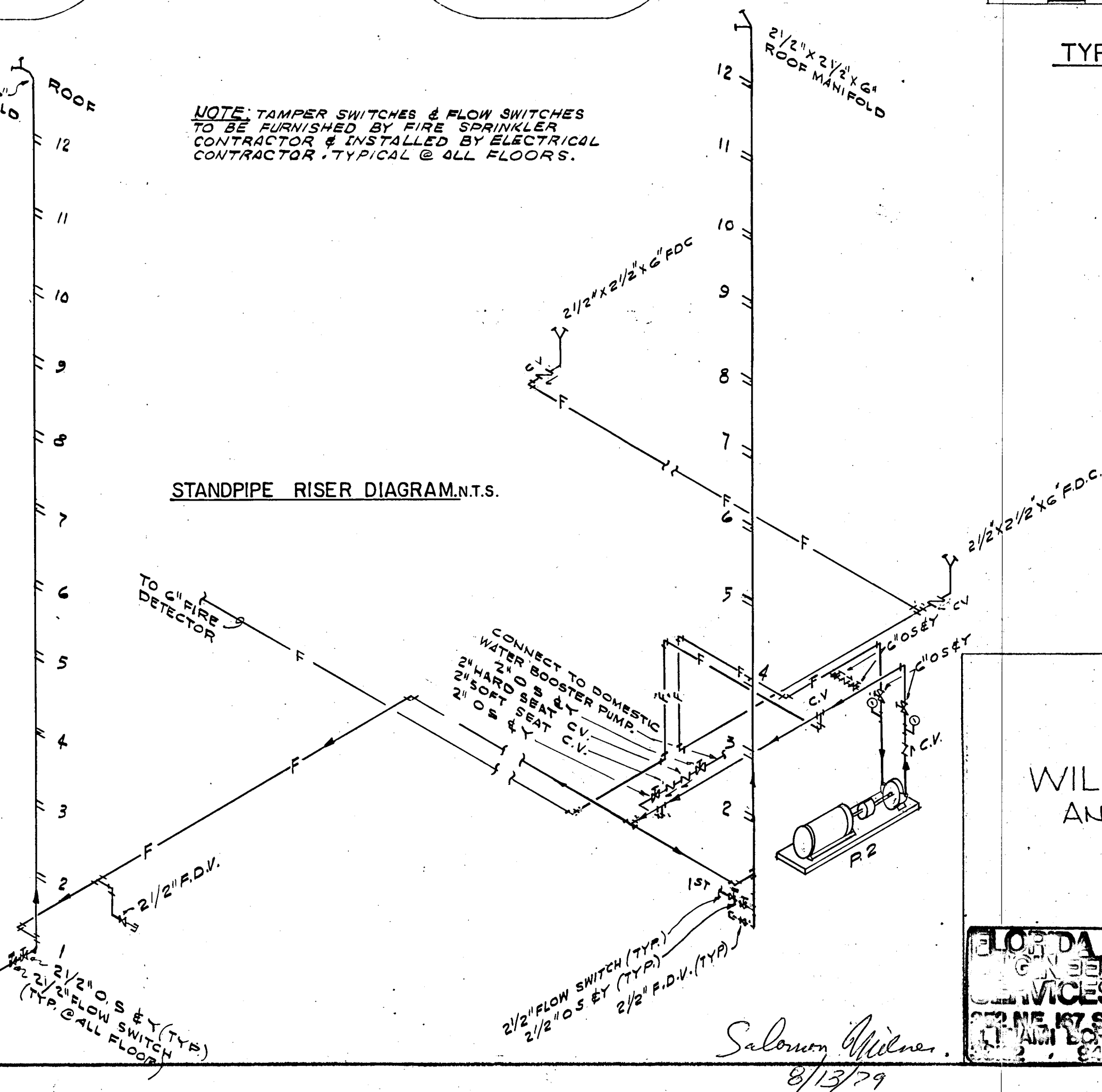


TYPICAL FLOOR PLAN (2ND THRU 12TH FLOOR)
SCALE: 1/8" = 1'-0"

NOTE: HYDRAULICALLY CALCULATED FIRE SPRINKLER SYSTEM SIZED FOR LIGHT HAZARD OCCUPANCY.

NOTE: TAMPER SWITCHES & FLOW SWITCHES TO BE FURNISHED BY FIRE SPRINKLER CONTRACTOR & INSTALLED BY ELECTRICAL CONTRACTOR, TYPICAL @ ALL FLOORS.

STANDPIPE RISER DIAGRAM, N.T.S.



WILLIAM M. FRIEDMAN
AND ASSOCIATES ARCHITECTS, INC.

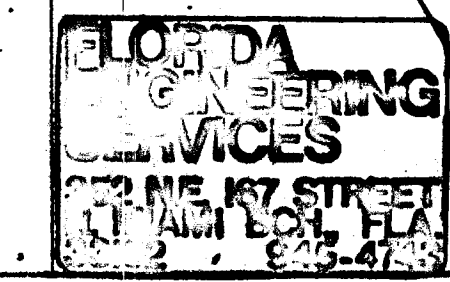
135 S.E. 14TH LANE
3588044

CHAMPLAIN TOWERS SOUTH

A- 135 UNIT CONDOMINIUM

COMM. U. DATE: 8-13-79 SHEET No. 3

REV. 8/13/79



Salomon Milner
8/13/79