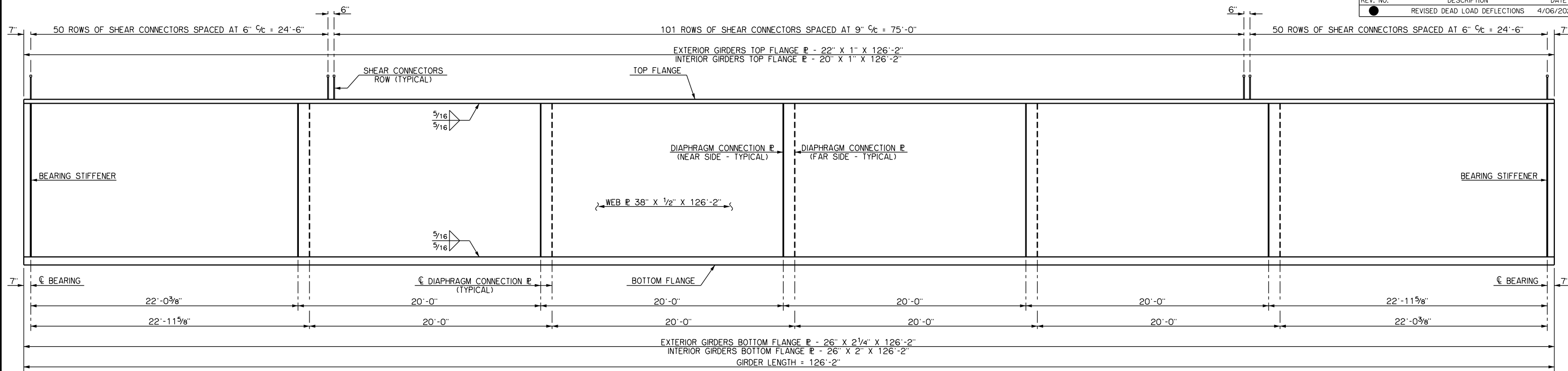
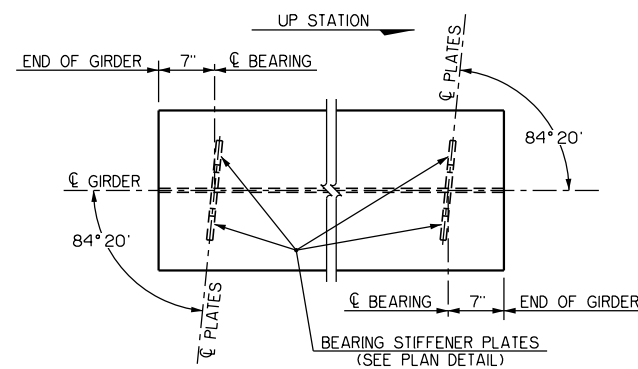


REV. NO.	DESCRIPTION	DATE
●	REVISED DEAD LOAD DEFLECTIONS	4/06/2020

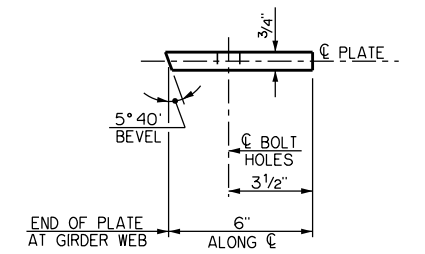


ELEVATION OF STEEL PLATE GIRDER IN SPAN NOS. 1 AND 2

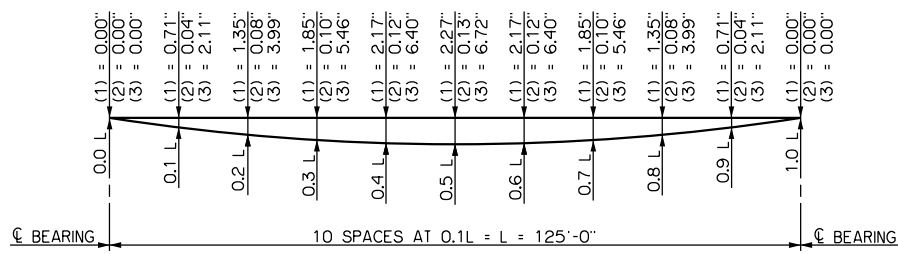
GIRDERS SHALL BE CAMBERED TO ACCOUNT FOR THE FULL DEAD LOAD DEFLECTIONS SHOWN AND THE PROFILE GRADE ALONG THE BRIDGE DECK SLAB. THE DEAD LOAD DEFLECTIONS SHOWN DUE TO THE DECK SLAB, HAUNCH, SIDEWALKS AND PARAPETS SHALL BE ACCOUNTED FOR IN THE HAUNCH DEPTH CALCULATIONS. THE DEAD LOAD DEFLECTIONS SHOWN FOR THE 5 PSF STAY-IN-PLACE FORMS ALLOWANCE SHALL BE INCLUDED IN THE GIRDER CAMBER ONLY IF STAY-IN-PLACE FORMS WILL BE USED TO CONSTRUCT THE DECK SLAB.



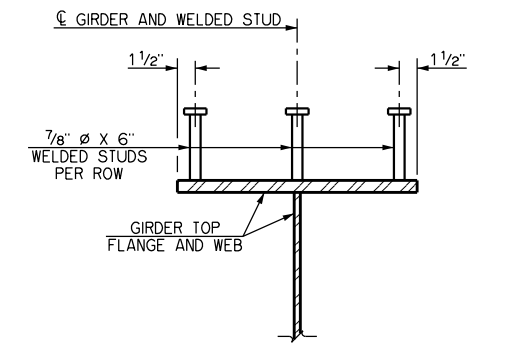
PLAN OF GIRDER AT BEARING STIFFENERS



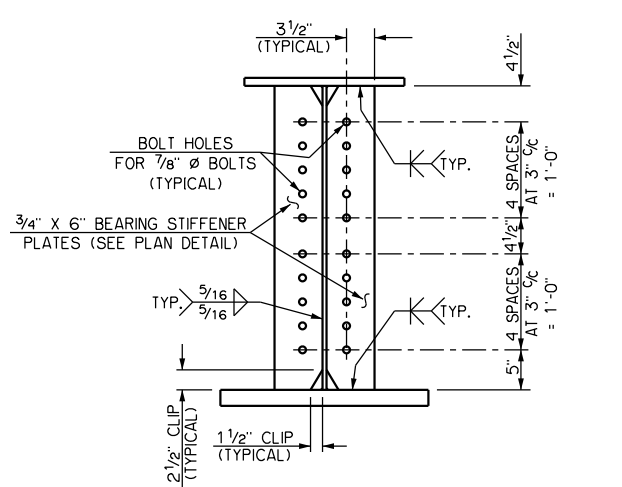
PLAN DETAIL OF BEARING STIFFENER



● DEAD LOAD DEFLECTION DIAGRAM FOR GIRDER LINE NOS. 1 AND 9

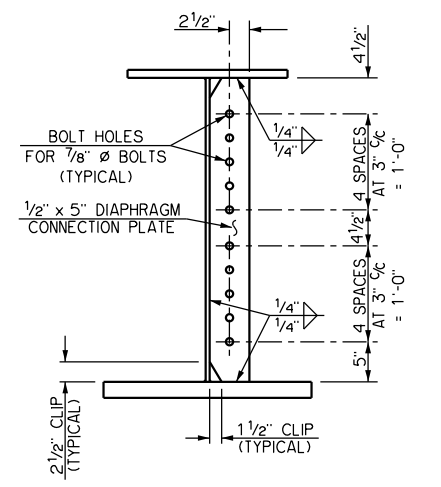


SECTION THROUGH GIRDER SHOWING TYPICAL SHEAR CONNECTORS ROW

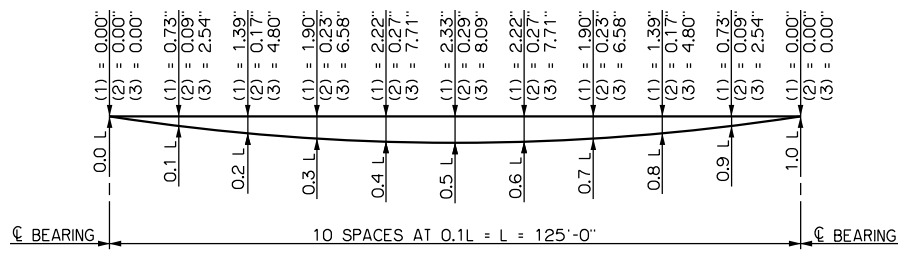


SECTION THROUGH GIRDER AT BEARING STIFFENERS

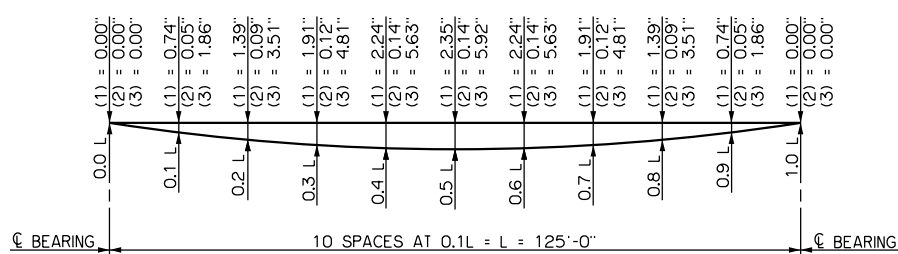
BOLT HOLES SHOWN FOR INTERIOR GIRDERS. AT EXTERIOR GIRDERS, OMIT BOLT HOLES IN BEARING STIFFENERS AT EXTERIOR FACES.



SECTION THROUGH GIRDER AT INTERMEDIATE DIAPHRAGM CONNECTION PLATE



● DEAD LOAD DEFLECTION DIAGRAM FOR GIRDER LINE NOS. 2, 3, 4, 6, 7 AND 8



● DEAD LOAD DEFLECTION DIAGRAM FOR GIRDER LINE NO. 5

NOTES

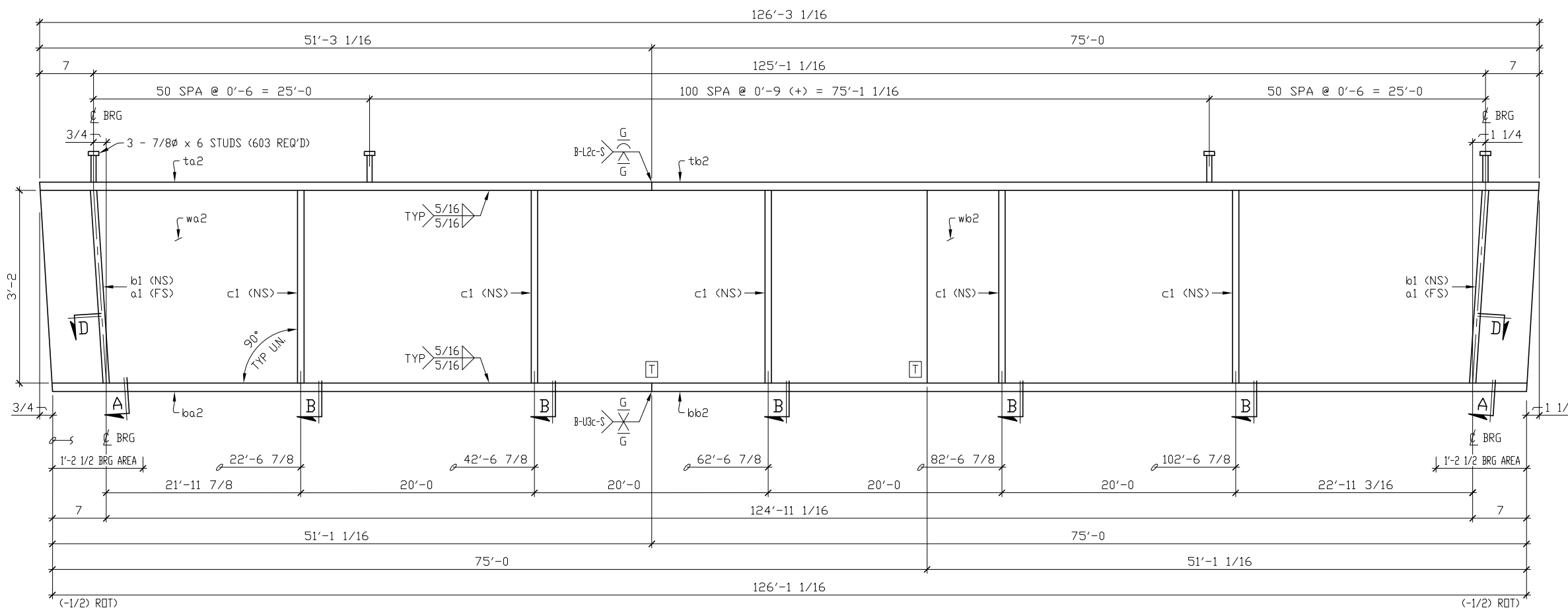
- (1) DEFLECTIONS DUE TO GIRDER AND DIAPHRAGMS
- (2) DEFLECTIONS DUE TO 5 PSF STAY-IN-PLACE FORMS ALLOWANCE
- (3) DEFLECTIONS DUE TO DECK SLAB, HAUNCH, SIDEWALKS AND PARAPETS

ALL STRUCTURAL STEEL SHALL CONFORM TO AASHTO M 270 (ASTM A 709), GRADE 50W AND SATISFY THE REQUIREMENTS OF SECTION 724.01 OF THE STANDARD SPECIFICATIONS.

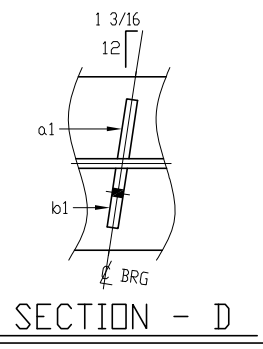
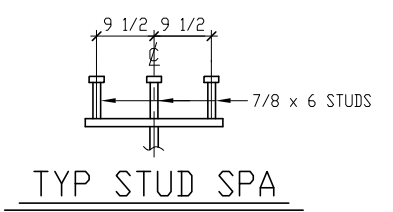
WELDED STUD SHEAR CONNECTORS SHALL CONFORM TO AASHTO M 169 (ASTM A 108), COLD DRAWN BARS, GRADES 1015, 1018 OR 1020 AND SATISFY THE REQUIREMENTS OF SECTION 724.04 OF THE STANDARD SPECIFICATIONS.

SH-77H (SOONER ROAD) OVER I-240 OKLAHOMA COUNTY BRIDGE 'A'

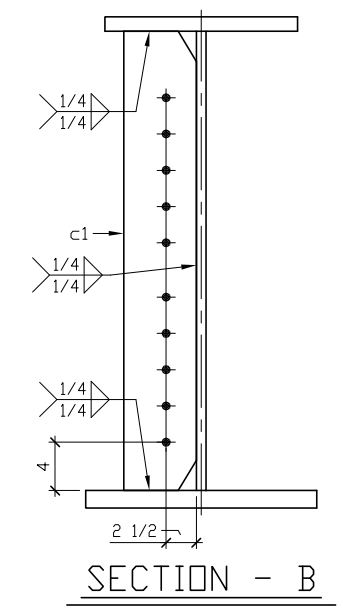
DETAILS OF STRUCTURAL STEEL (SHEET NO. 2 OF 3)



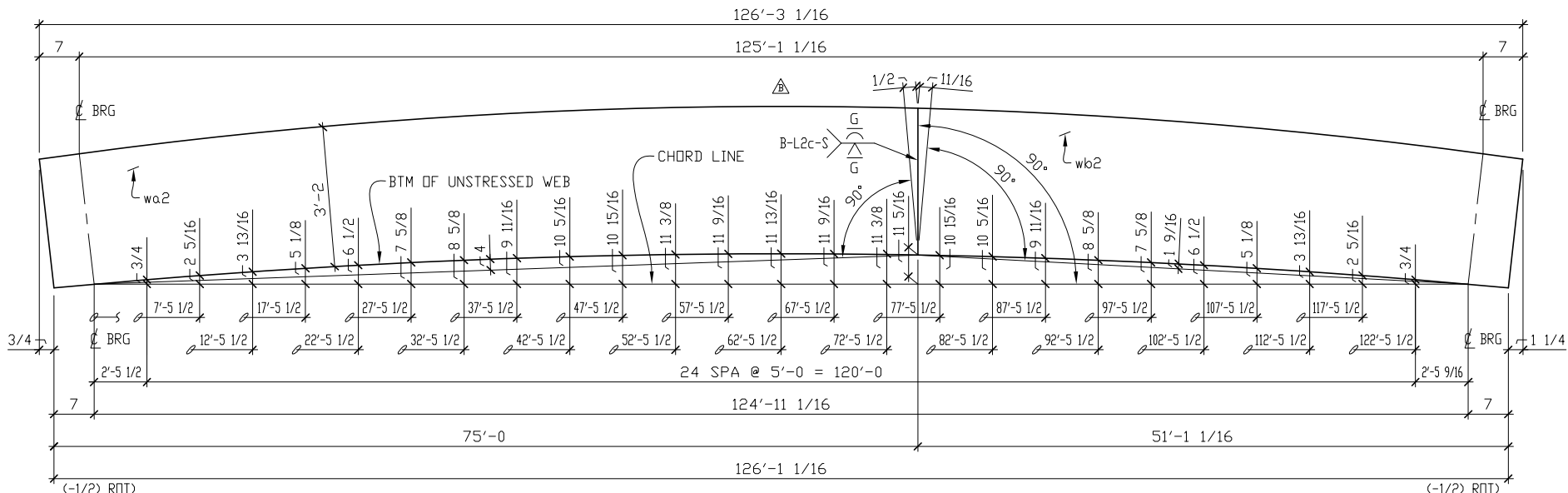
ONE - GIRDER ~ 2A1



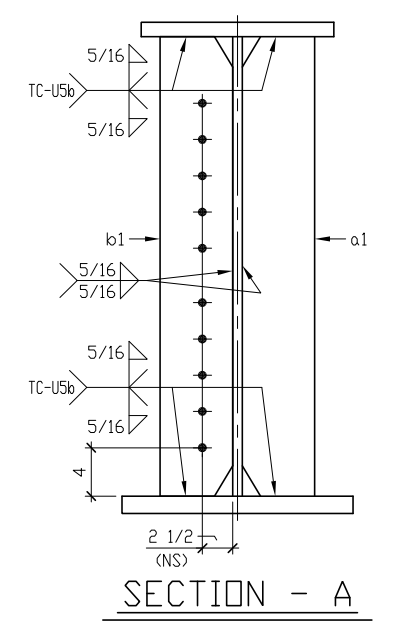
BILL OF MATERIALS					
QTY	MARK	DESCRIPTION	LENGTH	WT	REMARKS
1	2A1	PLATE GIRDER			
1	wa2	PL 1/2 x 38	75'-0 3/4	4853	M270-50WT2 CVN
1	wb2	PL 1/2 x 38	51'-2 5/16	3310	M270-50WT2 CVN
1	ta2	PL 1 x 22	51'-3 1/16	3837	M270-50WT2 CVN
1	tb2	PL 1 x 22	75'-0	5614	M270-50WT2 CVN
1	ba2	PL 2 1/4 x 26	51'-1 1/16	10170	M270-50WT2 CVN
1	bb2	PL 2 1/4 x 26	75'-0	14929	M270-50WT2 CVN
2	a1	PL 3/4 x 6	3'-2	97	M270-50WT2 CVN
2	b1	PL 3/4 x 6	3'-2	97	M270-50WT2 CVN
5	c1	PL 1/2 x 5	3'-2	135	M270-50WT2 CVN
603		STUD 7/8	0'-6	686	A108
TOTAL WEIGHT				43728	



- NOTES:
- SEE SHEET GNI FOR GENERAL NOTES.
 - ALL MATERIAL THIS SHEET IS AASHTO M270-50W U.N.
 - ALL HOLES THIS SHEET ARE 15/16Ø.
 - SEE SHEET 1 FOR STIFFENER DETAILS.
 - PLACE STIFFENERS NORMAL TO GIRDER WEB U.N.
 - INDICATES WELD IN TENSION AREA.



WEB CUTTING DIAGRAM
DIMS ALONG OR NORMAL TO CHORD LINE U.N.



STATE	JOB NUMBER	STATE	PROJECT NUMBER	CONTROL SECTION NUMBER
OKLAHOMA	27107(04)	OKLAHOMA	SBR-255N(517)SB	77H-55-88
REVISIONS				
NO.	DATE	BY	DESCRIPTION	
△	06/03/20	SDC	SUBMITTED FOR APPROVAL	
△	06/30/20	SDC	REVISED CAMBERS	
△				
△				
STEEL ASTM UNL. NTD.		M270-50W	ELECTRODES UNL. NTD.	E70XX
SHOP BOLTS UNL. NTD.		N/A	OPEN HOLES UNL. NTD.	15/16Ø
SHOP PAINT		NO PAINT	SURFACE PREP	SSPC-SP6 MILAGE DFT N/A
CnC Metal Shape Construction, LLC 1718 South Agnew Oklahoma City, OK 73108 Ph: 405-650-5500 Fax: 405-605-5755				
PROJECT: SH-77H (SOONER RD) OVER I-240 BRIDGE "A"			JOB NO.	
LOCATION: OKLAHOMA COUNTY, OK			20170	
CUSTOMER: FRONTIER BRIDGE		ENGR: EST COMPREHENSIVE ENG SVCS		
DESCRIPTION: PLATE GIRDER				
Det By: SDC	Date: 05/20	Chk By: CRT	Date: 05/20	SHEET NO. 2