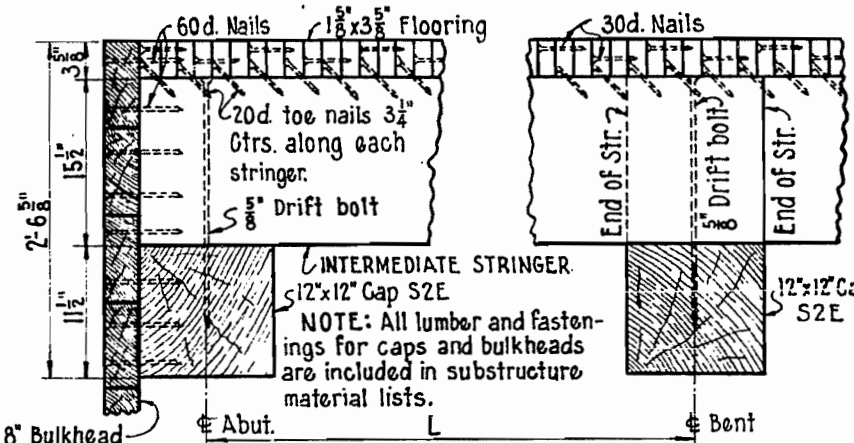
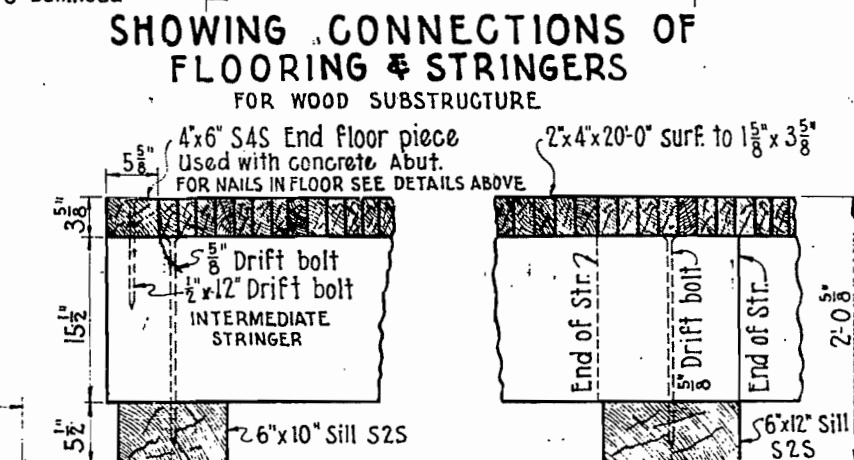


FOR 20d. NAILS (TOE NAILING) SEE DETAIL BELOW
PLAN SHOWING NAILING OF FLOORING

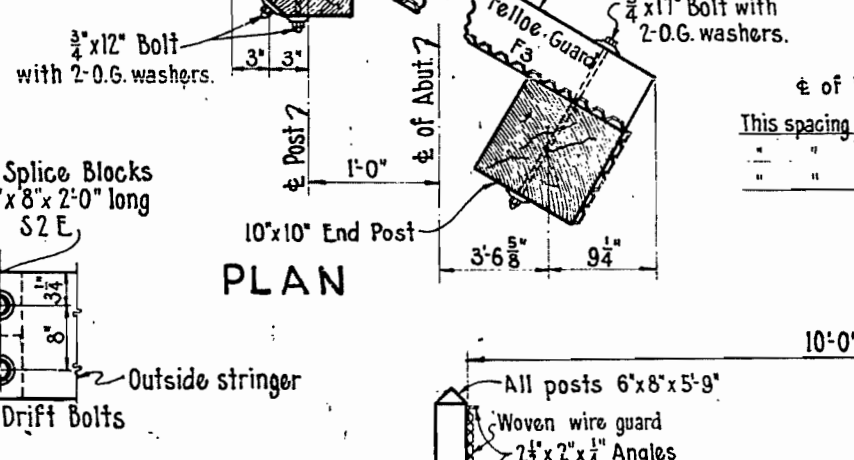
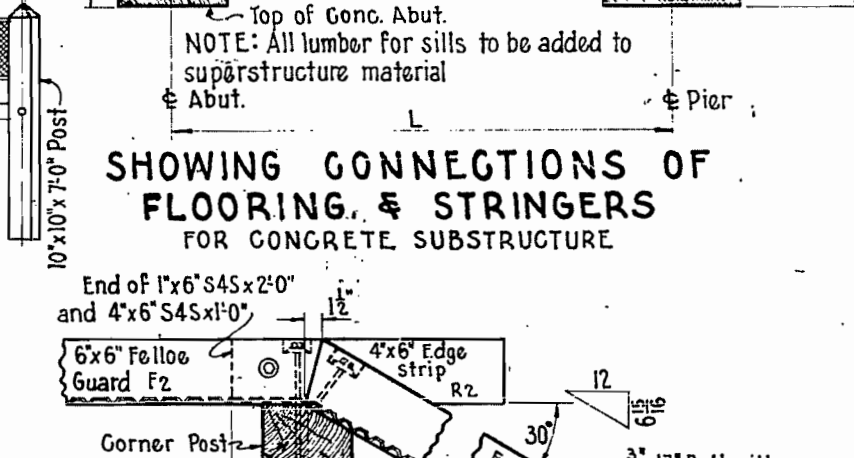


SHOWING CONNECTIONS OF FLOORING & STRINGERS FOR WOOD SUBSTRUCTURE

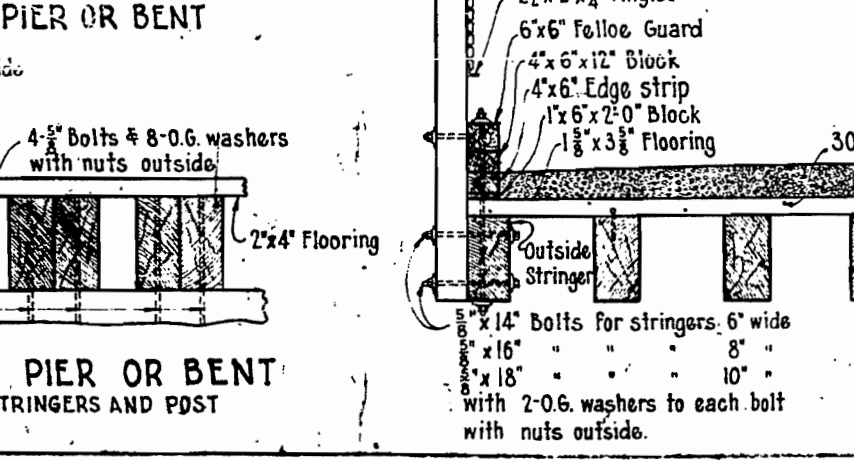


NOTE: All lumber for sills to be added to superstructure material & Abut.

SHOWING CONNECTIONS OF FLOORING & STRINGERS FOR CONCRETE SUBSTRUCTURE

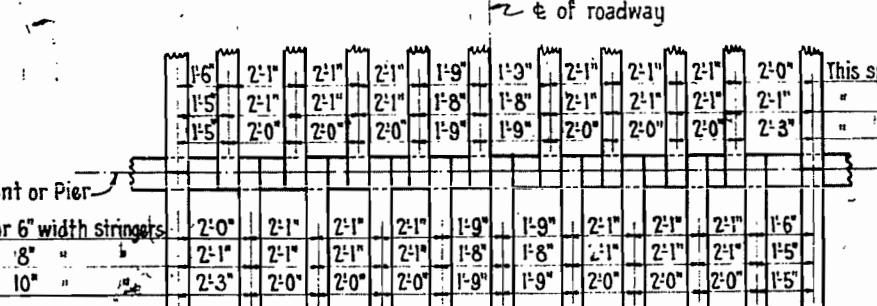


ER BENT

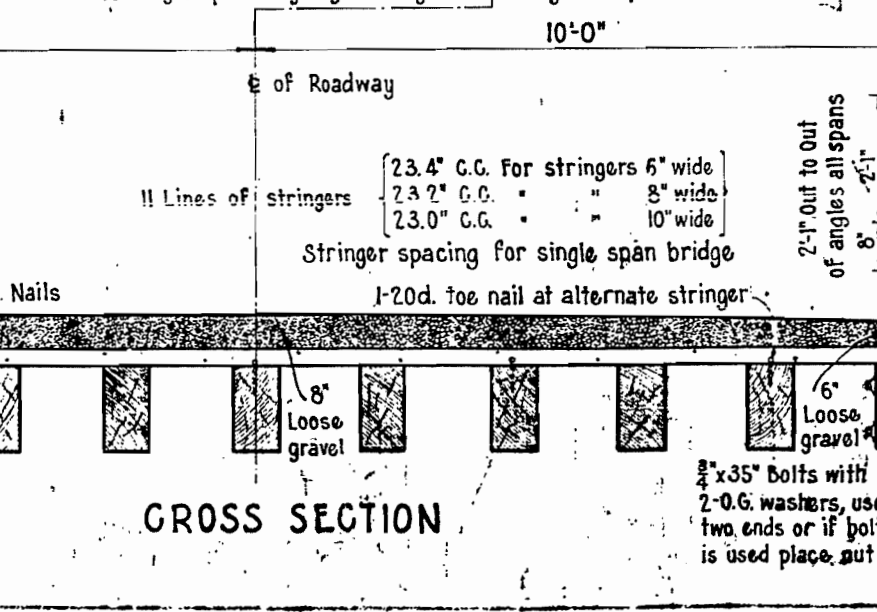


OR BENT
S AND POST

- a) * For concrete substructure deduct (6-Pcs. 2'x4'x20'-0") From and add 2-Pcs. 4'x6'x20'-0" S4S to above table.
- b) + for concrete substructure add 22 drift bolts $\frac{1}{2}$ "x12" (This makes additional hardware 14.7 Lbs. For each bridge)
- c) All timber shown above including flooring to be cut to length except that 1'x6' edge strip blocks may be random lengths and cut to 2 ft. lengths in field.
- d) Framing diagrams are shown on sheet 3 of BT-20.
- e) For fill approaches use approach plank and braces to 10'x10" posts as shown on sketch. ~



SKETCH SHOWING SPACING OF STRINGERS FOR MULTIPLE SPANS
At abutment ends of end spans space centers of stringers as shown
for single span bridge by slanting inside stringers in plan.

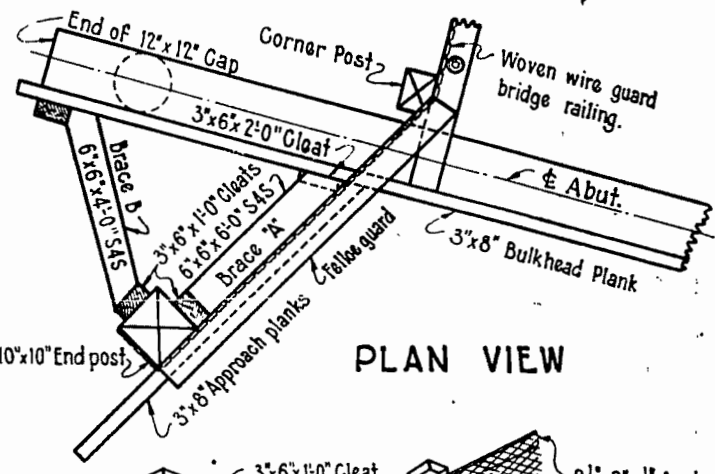


GROSS SECTION

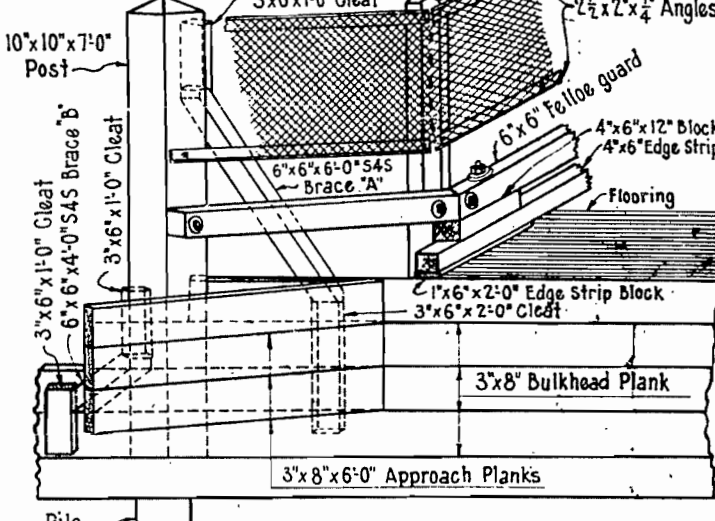
GENERAL NOTES

1. All timber shall be pressure creosoted 12 pounds per cubic foot in accordance with the New Mexico State Highway Specifications.
2. All dapping, cutting, framing of lumber and timber and boring of drift bolt holes in stringers shall be done before timber is pressure creosoted. Holes bored in field shall have dia. $\frac{1}{8}$ " less than diameter of bolt and shall be flushed with hot creosote oil before bolts are placed.
3. Timber shall meet the requirements of the 1927 Standard Specifications for grades of dense longleaf and short leaf Southern Yellow Pine of the Southern Pine Association. Grades shall be as follows with no heartwood requirement and the amount of sap wood shall not be limited. Stringers, caps, sills, substructure posts and brace blocks shall be dense structural square edge and sound timbers. Bulkhead plank shall be dense structural square edge and sound plank. Flooring shall be dense structural square edge and sound plank. All other timbers and lumber shall be dense square edge and sound. Loblobly, bull and old field pine/ or other species with porous, corky or spongy structure will not be accepted.
4. After floor is laid the top surface shall be thoroughly flushed with a coat of hot asphalt, which shall be brushed in with a stiff brush or broom.
5. At inside of felloe guard, the washer and head of bolt connecting post to felloe guard shall be coated.
6. Cost of all hardware in place in finished bridge shall be included in price bid per M of timber.
7. The top and bottom angles of the guard rail shall be given two field coats of white lead paint. The woven wire fabric shall be given one field coat of white lead paint.
8. Rail posts are included in and paid for as superstructure timber. Bid price for woven wire bridge railing shall include cost of steel angle rails.
9. For substructure see sheet No. 2. When special substructure is used, special drawings will be furnished.
10. All bolts to be standard machine bolts with cut threads, and hexagon nuts.
11. All washers to be standard $\frac{1}{2}$ " G cast iron washers, with dimensions not less than the following:-

Dia. Bolt	Dia. Bottom	Dia. Top	Dia. Hole	Thickness
$\frac{1}{2}$ "	$2\frac{1}{4}$ "	$1\frac{1}{4}$ "	$\frac{5}{8}$ "	$\frac{1}{2}$ "
$\frac{5}{8}$ "	$2\frac{3}{4}$ "	$1\frac{1}{2}$ "	$\frac{3}{4}$ "	$\frac{5}{8}$ "
$\frac{3}{4}$ "	$3\frac{1}{4}$ "	$1\frac{3}{4}$ "	$\frac{7}{8}$ "	$\frac{3}{4}$ "



PLAN VIEW



ISOMETRIC VIEW

ISOMETRIC VIEW

SHOWING BRACE TO 10"x10" POST

Braces to be used in fill approaches

NOTE: Nail each cleat with 4-50d. nails. Nail end of each approach plank with 2-60d. nails and end of each brace with 2-50d. nails.

LUMBER REQUIRED FOR TWO APPROACHES

12-Pcs. 3"x8"x6'-0" Rough	144 FT. B.M.
1-Pc. 6"x6"x16'-0" S4S	48
2-Pcs. 6"x6"x12'-0" S4S	72
2-Pcs. 3"x6"x10'-0" S4S	<u>30</u>
TOTAL	294 FT. B.M.

HARDWARE REQUIRED FOR TWO APPROACHES	
96-50 d. nails	6.8 Lbs.
48-60 d. nails	4.1 "
TOTAL	10.9 Lbs.

⑫ Where cleats are used drill $\frac{1}{32}$ " diameter or $\frac{3}{16}$ " Dia. holes for the nails. The use of split or checked pieces for cleats will not be permitted.

NEW MEXICO
STATE HIGHWAY DEPARTMENT
STANDARD
TREATED TIMBER
BRIDGES
SUPERSTRUCTURE

BT-20

QUANTITIES FOR TWO ABUTMENTS TYPE - C

PCS	DESCRIPTION	LENGTH	STOCK LENGTH	FT. B.M.
4	12"x12" S2E Caps N°A-1	16'-0"	4 Pcs. 16'-0"	768
4	12"x12" S2E Blocks	5'-0"	2 Pcs. 10'-0"	240
4	12"x12" S2E Blocks	3'-6"	1 Pcs. 14'-0"	168
4	3"x8" Bulkhead Plank	13'-6"	4 Pcs. 14'-0"	112
4	3"x8"	12'-0"	4 Pcs. 14'-0"	112
4	3"x8"	15'-0"	4 Pcs. 16'-0"	128
4	3"x8"	17'-0"	4 Pcs. 18'-0"	144
4	3"x8"	18'-0"	4 Pcs. 18'-0"	144
16	3"x8"	18'-0"	16 Pcs. 18'-0"	576
4	3"x8" Wing Plank	1'-6"	1 Pcs. 6'-0"	12
4	3"x8"	2'-6"	1 Pcs. 10'-0"	20
4	3"x8"	3'-6"	1 Pcs. 14'-0"	28
4	3"x8"	5'-0"	2 Pcs. 10'-0"	40
4	3"x8" Wing Braces	4'-0"	2 Pcs. 8'-0"	32
14	Piles	Variable	Variable	Variable

TOTAL FT. B.M. (NOT INCLUDING PILES) 2508

PCS	DESCRIPTION	LENGTH	POUNDS
26	3/4" Drift Bolts	22"	71.6
60d	Nails		36
50d	Nails		5
30d	Nails		5
26ga	Galv. Sheet Metal	49'-8"	18" wide
			170.6

IF BULKHEAD PLANK IS CARRIED DOWN TO 7'-4" SUBTRACT FROM ABOVE

4	3"x8" Wing Braces	4'-0"	2 Pcs. 8'-0"	32
---	-------------------	-------	--------------	----

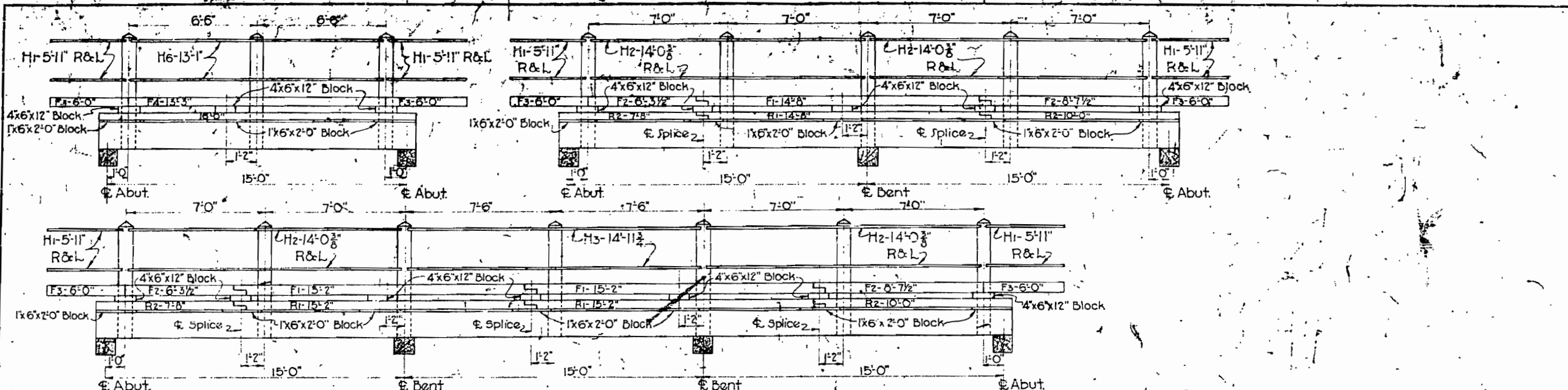
ADD TO ABOVE

4	3"x8" Wing Braces	7'-0"	2 Pcs. 14'-0"	56
8	3"x8" Bulkhead Plank	18'-0"	8 Pcs. 18'-0"	288
8	3"x8" Wing Plank	6'-0"	8 Pcs. 6'-0"	96

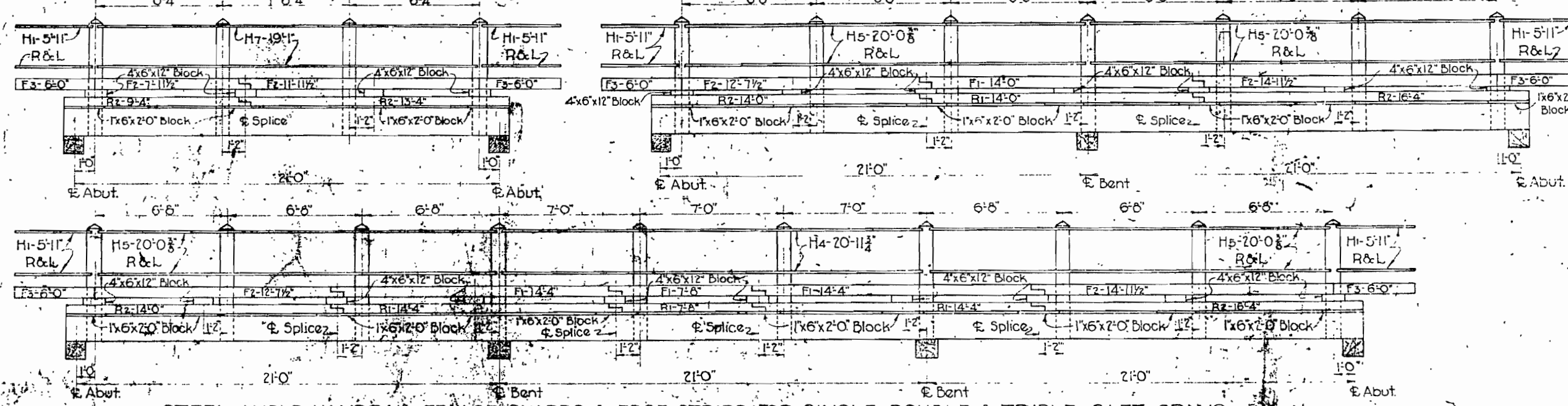
TOTAL FT. B.M. (NOT INCLUDING PILES) 2916

QUANTITIES FOR TWO ABUTMENTS TYPE - C

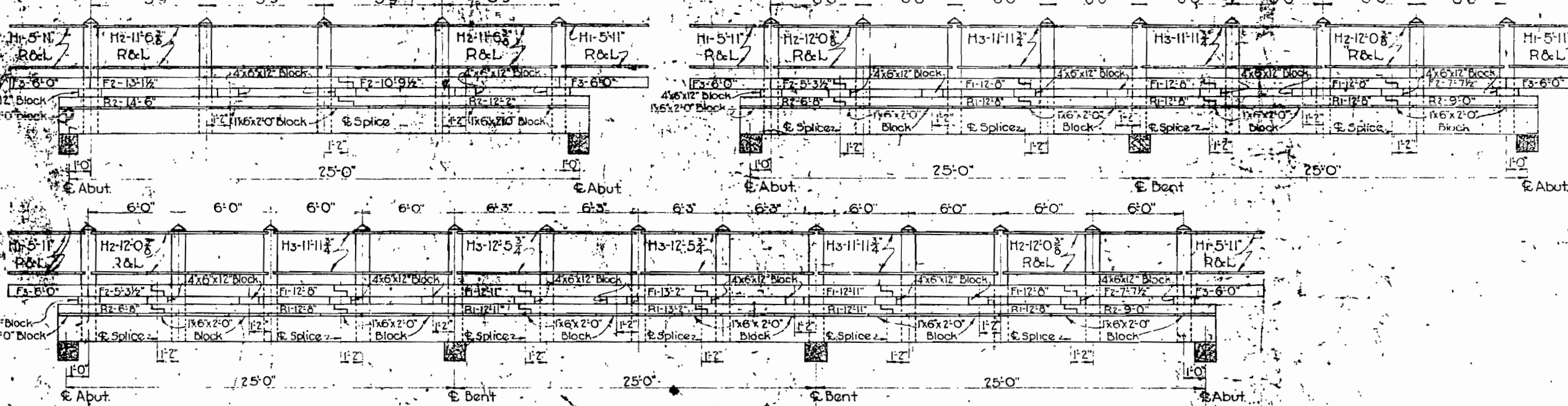
PCS	DESCRIPTION	LENGTH	STOCK LENGTH	FT. B.M.
4	3"x6" Cleats	7'-8"	1 Pcs. 12'-0"	18
4	3"x6" Cleats	10'-0"	2 Pcs. 10'-0"	240
4	3"x6" Cleats	12'-0"	2 Pcs. 12'-0"	240
4	3"x6" Cleats	14'-0"	2 Pcs. 14'-0"	240
4	3"x6" Cleats	16'-0"	2 Pcs. 16'-0"	240
4	3"x6" Cleats	18'-0"	2 Pcs. 18'-0"	240
4	3"x6" Cleats	20'-0"	2 Pcs. 20'-0"	240
4	3"x6" Cleats	22'-0"	2 Pcs. 22'-0"	240
4	3"x6" Cleats	24'-0"	2 Pcs. 24'-0"	240
4	3"x6" Cleats	26'-0"	2 Pcs. 26'-0"	240
4	3"x6" Cleats	28'-0"	2 Pcs. 28'-0"	240
4	3"x6" Cleats	30'-0"	2 Pcs. 30'-0"	240
4	3"x6" Cleats	32'-0"	2 Pcs. 32'-0"	240
4	3"x6" Cleats	34'-0"	2 Pcs. 34'-0"	240
4	3"x6" Cleats	36'-0"	2 Pcs. 36'-0"	240
4	3"x6" Cleats	38'-0"	2 Pcs. 38'-0"	240
4	3"x6" Cleats	40'-0"	2 Pcs. 40'-0"	240
4	3"x6" Cleats	42'-0"	2 Pcs. 42'-0"	240
4	3"x6" Cleats	44'-0"	2 Pcs. 44'-0"	240
4	3"x6" Cleats	46'-0"	2 Pcs. 46'-0"	240
4	3"x6" Cleats	48'-0"	2 Pcs. 48'-0"	240
4	3"x6" Cleats	50'-0"	2 Pcs. 50'-0"	240
4	3"x6" Cleats	52'-0"	2 Pcs. 52'-0"	240
4	3"x6" Cleats	54'-0"	2 Pcs. 54'-0"	240
4	3"x6" Cleats	56'-0"	2 Pcs. 56'-0"	240
4	3"x6" Cleats	58'-0"	2 Pcs. 58'-0"	240
4	3"x6" Cleats	60'-0"	2 Pcs. 60'-0"	240
4	3"x6" Cleats	62'-0"	2 Pcs. 62'-0"	240
4	3"x6" Cleats	64'-0"	2 Pcs. 64'-0"	240
4	3"x6" Cleats	66'-0"	2 Pcs. 66'-0"	240
4	3"x6" Cleats	68'-0"	2 Pcs. 68'-0"	240
4	3"x6" Cleats	70'-0"	2 Pcs. 70'-0"	240
4	3"x6" Cleats	72'-0"	2 Pcs. 72'-0"	240
4	3"x6" Cleats	74'-0"	2 Pcs. 74'-0"	240
4	3"x6" Cleats	76'-0"	2 Pcs. 76'-0"	240
4	3"x6" Cleats	78'-0"	2 Pcs. 78'-0"	240
4	3"x6" Cleats	80'-0"	2 Pcs. 80'-0"	240
4	3"x6" Cleats	82'-0"	2 Pcs. 82'-0"	240
4	3"x6" Cleats	84'-0"	2 Pcs. 84'-0"	240
4	3"x6" Cleats	86'-0"	2 Pcs. 86'-0"	240
4	3"x6" Cleats	88'-0"	2 Pcs. 88'-0"	240
4	3"x6" Cleats	90'-0"	2 Pcs. 90'-0"	240
4	3"x6" Cleats	92'-0"	2 Pcs. 92'-0"	240
4	3"x6" Cleats	94'-0"	2 Pcs. 94'-0"	240
4	3"x6" Cleats	96'-0"	2 Pcs. 96'-0"	240
4	3"x6" Cleats	98'-0"	2 Pcs. 98'-0"	240
4	3"x6" Cleats	100'-0"	2 Pcs. 100'-0"	240
4	3"x6" Cleats	102'-0"	2 Pcs. 102'-0"	240
4	3"x6" Cleats	104'-0"	2 Pcs. 104'-0"	240
4	3"x6" Cleats	106'-0"	2 Pcs. 106'-0"	240
4	3"x6" Cleats	108'-0"	2 Pcs. 108'-0"	240
4	3"x6" Cleats	110'-0"	2 Pcs. 110'-0"	240
4	3"x6" Cleats	112'-0"	2 Pcs. 112'-0"	240
4	3"x6" Cleats	114'-0"	2 Pcs. 114'-0"	240
4	3"x6" Cleats	116'-0"	2 Pcs. 116'-0"	240
4	3"x6" Cleats	118'-0"	2 Pcs. 118'-0"	240
4	3"x6" Cleats	120'-0"	2 Pcs. 120'-0"	240
4	3"x6" Cleats	122'-0"	2 Pcs. 122'-0"	240
4	3"x6" Cleats	124'-0"	2 Pcs. 124'-0"	240
4	3"x6" Cleats	126'-0"	2 Pcs. 126'-0"	240
4	3"x6" Cleats	128'-0"	2 Pcs. 128'-0"	240
4	3"x6" Cleats	130'-0"	2 Pcs. 130'-0"	240
4	3"x6" Cleats	132'-0"	2 Pcs. 132'-0"	240
4	3"x6" Cleats	134'-0"	2 Pcs. 134'-0"	240
4	3"x6" Cleats	136'-0"	2 Pcs. 136'-0"	240
4	3"x6" Cleats	138'-0"	2 Pcs. 138'-0"	240
4	3"x6" Cleats	140'-0"	2 Pcs. 140'-0"	240
4	3"x6" Cleats	142'-0"	2 Pcs. 142'-0"	240
4	3"x6" Cleats	144'-0"	2 Pcs. 144'-0"	240
4	3"x6" Cleats	146'-0"	2 Pcs. 146'-0"	240
4	3"x6" Cleats	148'-0"	2 Pcs. 148'-0"	240
4	3"x6" Cleats	150'-0"	2 Pcs. 150'-0"	240
4	3"x6" Cleats	152'-0"	2 Pcs. 152'-0"	240
4	3"x6" Cleats	154'-0"	2 Pcs. 154'-0"	240
4	3"x6" Cleats	156'-0"	2 Pcs. 156'-0"	240
4	3"x6" Cleats	158'-0"	2 Pcs. 158'-0"	240
4	3"x6" Cleats	160'-0"	2 Pcs. 160'-0"	240
4	3"x6" Cleats	162'-0"	2 Pcs. 162'-0"	240
4	3"x6" Cleats	164'-0"	2 Pcs. 164'-0"	240
4	3"x6" Cleats	166'-0"	2 Pcs. 166'-0"	240
4	3"x6" Cleats	168'-0"	2 Pcs. 168'-0"	240
4	3"x6" Cleats	170'-0"	2 Pcs. 170'-0"	240
4	3"x6" Cleats	172'-0"	2 Pcs. 172'-0"	240
4	3"x6" Cleats	174'-0"	2 Pcs. 174'-0"	240
4	3"x6" Cleats	176'-0"	2 Pcs. 176'-0"	240
4	3"x6" Cleats	178'-0"	2 Pcs. 178'-0"	240
4	3"x6" Cleats	180'-0"	2 Pcs. 180'-0"	240
4	3"x6" Cleats	182'-0"	2 Pcs. 182'-0"	240
4	3"x6" Cleats	184'-0"	2 Pcs. 184'-0"	240
4	3"x6" Cleats	186'-0"	2 Pcs. 186'-0"	240
4	3"x6" Cleats	188'-0"	2 Pcs. 188'-0"	240
4	3"x6" Cleats	190'-0"	2 Pcs. 190'-0"	240
4	3"x6" Cleats	192'-0"	2 Pcs. 192'-0"	240
4	3"x6" Cleats	194'-0"	2 Pcs. 194'-0"	240
4	3"x6" Cleats	196'-0"	2 Pcs. 196'-0"	240
4	3"x6" Cleats	198'-0"	2 Pcs. 198'-0"	240
4	3"x6" Cleats	200'-0"	2 Pcs. 200'-0"	240
4	3"x6" Cleats	202'-0"	2 Pcs. 202'-0"	240
4	3"x6" Cleats	204'-0"	2 Pcs. 204'-0"	240
4	3"x6" Cleats	206'-0"	2 Pcs. 206'-0"	240
4	3"x6" Cleats	208'-0"	2 Pcs. 208'-0"	240
4	3"x6" Cleats	210'-0"	2 Pcs. 210'-0"	240
4	3"x6" Cleats	212'-0"	2 Pcs. 212'-0"	240
4	3"x6" Cleats	214'-0"	2 Pcs. 214'-0"	240
4	3"x6" Cleats	216'-0"	2 Pcs. 216'-0"	240
4	3"x6" Cleats	218'-0"	2 Pcs. 218'-0"	240
4	3"x6" Cleats	220'-0"	2 Pcs. 220'-0"	240
4	3"x6" Cleats	222'-0"	2 Pcs. 222'-0"	240
4	3"x6" Cleats	224'-0"	2 Pcs. 224'-0"	240
4	3"x6" Cleats	226'-0"	2 Pcs. 226'-0"	240
4	3"x6" Cleats	228'-0"	2 Pcs. 228'-0"	240
4	3"x6" Cleats	230'-0"	2 Pcs. 230'-0"	240
4	3"x6" Cleats	232'-0"	2 Pcs. 232'-0"	240
4	3"x6" Cleats	234'-0"	2 Pcs. 234'-0"	240
4	3"x6" Cleats	236'-0"	2 Pcs. 236'-0"	240
4	3"x6" Cleats	238'-0"	2 Pcs. 238'-0"	240
4	3"x6" Cleats	240'-0"	2 Pcs. 240'-0"	240
4	3"x6" Cleats	242'-0"	2 Pcs. 242'-0"	240
4	3"x6" Cleats	244'-0"	2 Pcs. 244'-0"	240
4	3"x6" Cleats	246'-0"	2 Pcs. 246'-0"	240
4	3"x6" Cleats	248'-0"	2 Pcs. 248'-0"	240
4	3"x6" Cleats	250'-0"	2 Pcs. 250'-0"	240
4	3"x6" Cleats	252'-0"	2 Pcs. 252'-0"	240
4	3"x6" Cleats	254'-0"	2 Pcs. 254'-0"	240
4	3"x6" Cleats	256'-0"	2 Pcs. 256'-0"	240
4	3"x6" Cleats	258'-0"	2 Pcs. 258'-0"	240
4	3"x6" Cleats	260'-0"	2 Pcs. 260'-0"	240
4	3"x6" Cleats	262'-0"	2 Pcs. 262'-0"	240
4	3"x6" Cleats	264'-0"	2 Pcs. 264'-0"	240
4	3"x6" Cleats	266'-0"	2 Pcs. 266'-0"	240
4	3"x6" Cleats	268'-0"	2 Pcs. 268'-0"	240
4	3"x6" Cleats	270'-0"	2 Pcs. 270'-0"	240
4	3"x6" Cleats	272'-0"	2 Pcs. 272'-0"	240
4	3"x6" Cleats	274'-0"	2 Pcs. 274'-0"	240
4	3"x6" Cleats	276'-0"	2 Pcs. 276'-0"	240
4	3"x6" Cleats	278'-0"	2 Pcs. 278'-0"	240
4	3"x6" Cleats	280'-0"	2 Pcs. 280'-0"	240
4	3"x6" Cleats	282'-0"	2 Pcs. 282'-0"	240
4	3"x6" Cleats	284'-0"	2 Pcs. 284'-0"	240
4	3"x6" Cleats	286'-0"	2 Pcs. 286'-0"	240
4	3"x6" Cleats	288'-0"	2 Pcs. 288'-0"	240
4	3"x6" Cleats	290'-0"	2 Pcs. 290'-0"	240
4	3"x6" Cleats	292'-0"	2 Pcs. 292'-0"	240
4	3"x6" Cleats	294'-0"	2 Pcs. 294'-0"	240
4	3"x6" Cleats	296'-0"	2 Pcs. 296'-0"	240
4	3"x6" Cleats	298'-0"	2 Pcs. 298'-0"	240
4	3"x6" Cleats	300'-0"	2 Pcs. 300'-0"	240
4	3"x6" Cleats	302'-0"	2 Pcs. 302'-0"	240
4	3"x6" Cleats	304'-0"	2 Pcs. 304'-0"	240
4	3"x6" Cleats	306'-0"	2 Pcs. 306'-0"	240
4	3"x6" Cleats	308'-0"	2 Pcs. 308'-0"	240
4	3"x6" Cleats	310'-0"	2 Pcs. 310'-0"	240
4	3"x6" Cleats	312'-0"	2 Pcs. 312'-0"	240
4	3"x6" Cleats	314'-0"	2 Pcs. 314'-0"	240
4	3"x6" Cleats	316'-0"	2 Pcs. 316'-0"	240
4	3"x6" Cleats	318'-0"	2 Pcs. 318'-0"	240
4	3"x6" Cleats	320'-0"	2 Pcs. 320'-0"	240
4	3"x6" Cleats	322'-0"	2 Pcs. 322'-0"	240
4	3"x6" Cleats	324'-0"	2 Pcs. 324'-0"	240
4	3"x6" Cleats	326'-0"	2 Pcs. 326'-0"	240
4	3"x6" Cleats	328'-0"	2 Pcs. 328'-0"	240
4	3"x6" Cleats	330'-0"	2 Pcs. 330'-0"	240
4	3"x6" Cleats	332'-0"	2 Pcs. 332'-0"	240
4	3"x6" Cleats	334'-0"	2 Pcs. 334'-0"	240
4	3"x6" Cleats	336'-0"	2 Pcs. 336'-0"	240
4	3"x6" Cleats	338'-0"	2 Pcs. 338'-0"	240
4	3"x6" Cleats	340'-0"	2 Pcs. 340'-0"	240
4	3"x6" Cleats	342'-0"	2 Pcs. 342'-0"	240
4	3"x6" Cleats	344'-0"	2 Pcs. 344'-0"	240
4	3"x6" Cleats	346'-0"	2 Pcs. 346'-0"	240
4	3"x6" Cleats	348'-0"	2 Pcs. 348'-0"	240
4	3"x6" Cleats	350'-0"	2 Pcs. 350'-0"	240
4	3"x6" Cleats	352'-0"	2 Pcs. 352'-0"	240
4	3"x6" Cleats	354'-0"	2 Pcs. 354'-0"	240
4	3"x6" Cleats	356'-0"	2 Pcs. 356'-0"	240
4	3"x6" Cleats	358'-0"	2 Pcs. 358'-0"	240
4	3"x6" Cleats	360'-0"	2 Pcs. 360'-0"	240
4	3"x6" Cleats	362'-0"	2 Pcs. 362'-0"	240
4	3"x6" Cleats	364'-0"	2 Pcs. 364'-0"	240
4	3"x6" Cleats	366'-0"	2 Pcs. 366'-0"	240
4	3"x6" Cleats	368'-0"	2 Pcs. 368'-0"	240
4	3"x6" Cleats	370'-0"	2 Pcs. 370'-0"	240
4	3"x6" Cleats	372'-0"	2 Pcs. 372'-0"	240
4	3"x6" Cleats	374'-0"	2 Pcs. 374'-0"	240
4	3"x6" Cleats	376'-0"	2 Pcs. 376'-0"	240
4	3"x6" Cleats	378'-0"	2 Pcs. 378'-0"	240
4	3"x6" Cleats	380'-0"	2 Pcs. 380'-0"	240
4	3"x6" Cleats	382'-0"	2 Pcs. 382'-0"	240
4	3"x6" Cleats	384'-0"	2 Pcs. 384'-0"	240
4	3"x6" Cleats	386'-0"	2 Pcs. 386'-0"	240
4	3"x6" Cleats	388'-0"	2 Pcs. 388'-0"	240



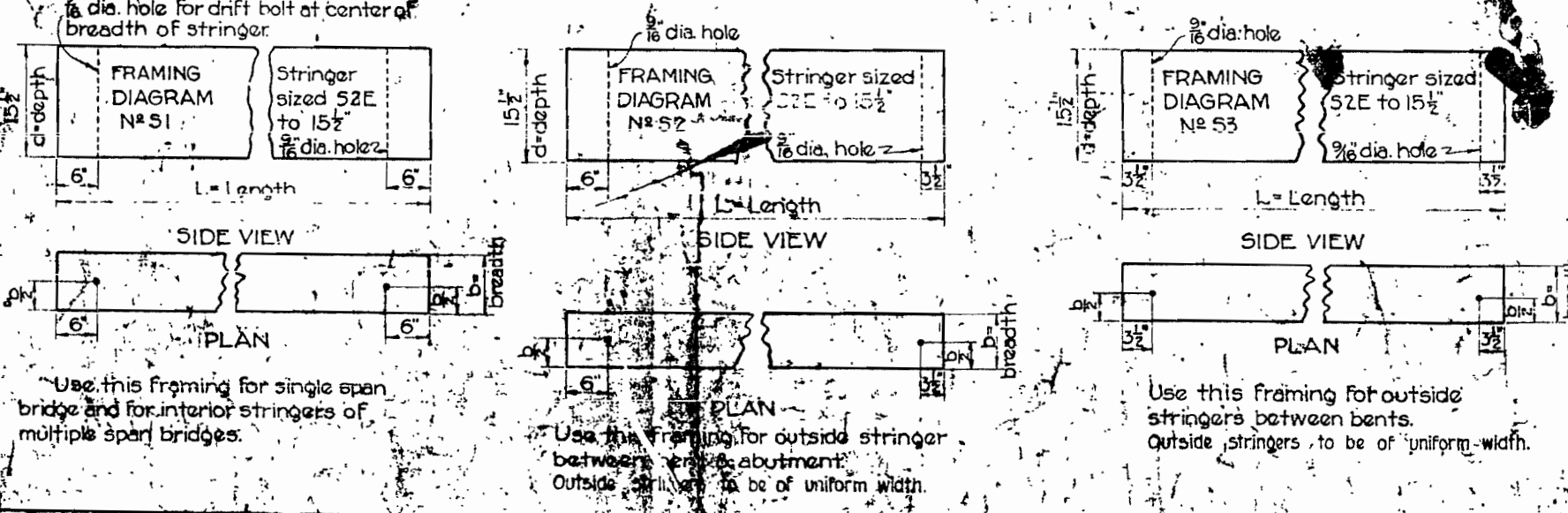
STEEL ANGLE HANDRAIL • FELLOE GUARDS & EDGE STRIPS FOR SINGLE • DOUBLE & TRIPLE 15 FT. SPANS.



STEEL ANGLE HANDRAIL • FELLOE GUARDS & EDGE STRIPS FOR SINGLE • DOUBLE & TRIPLE 21 FT. SPANS.

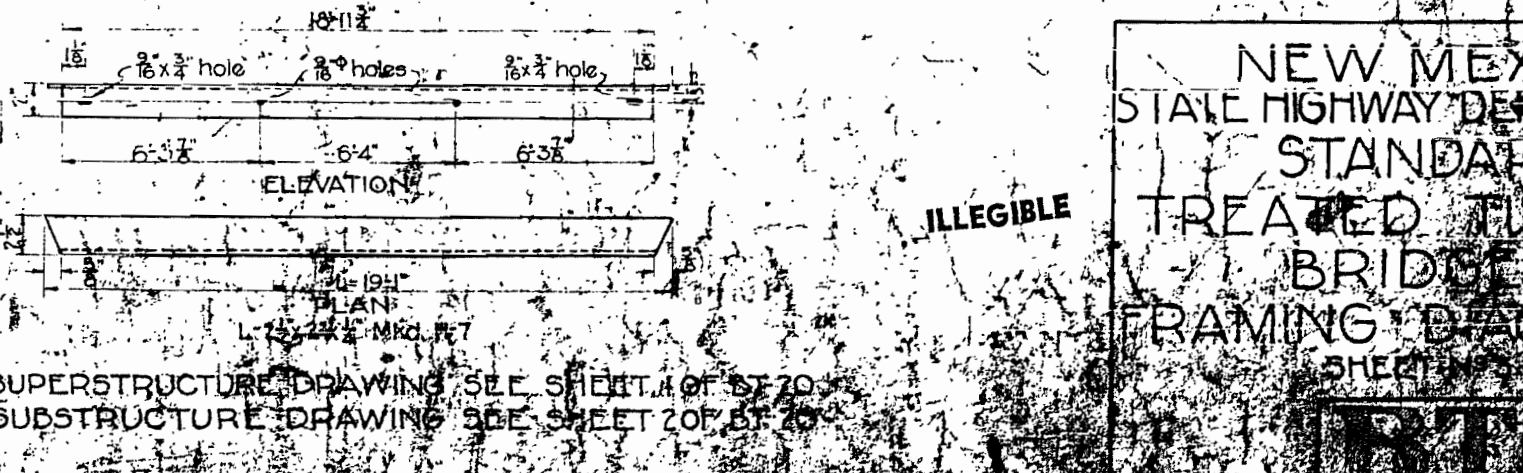
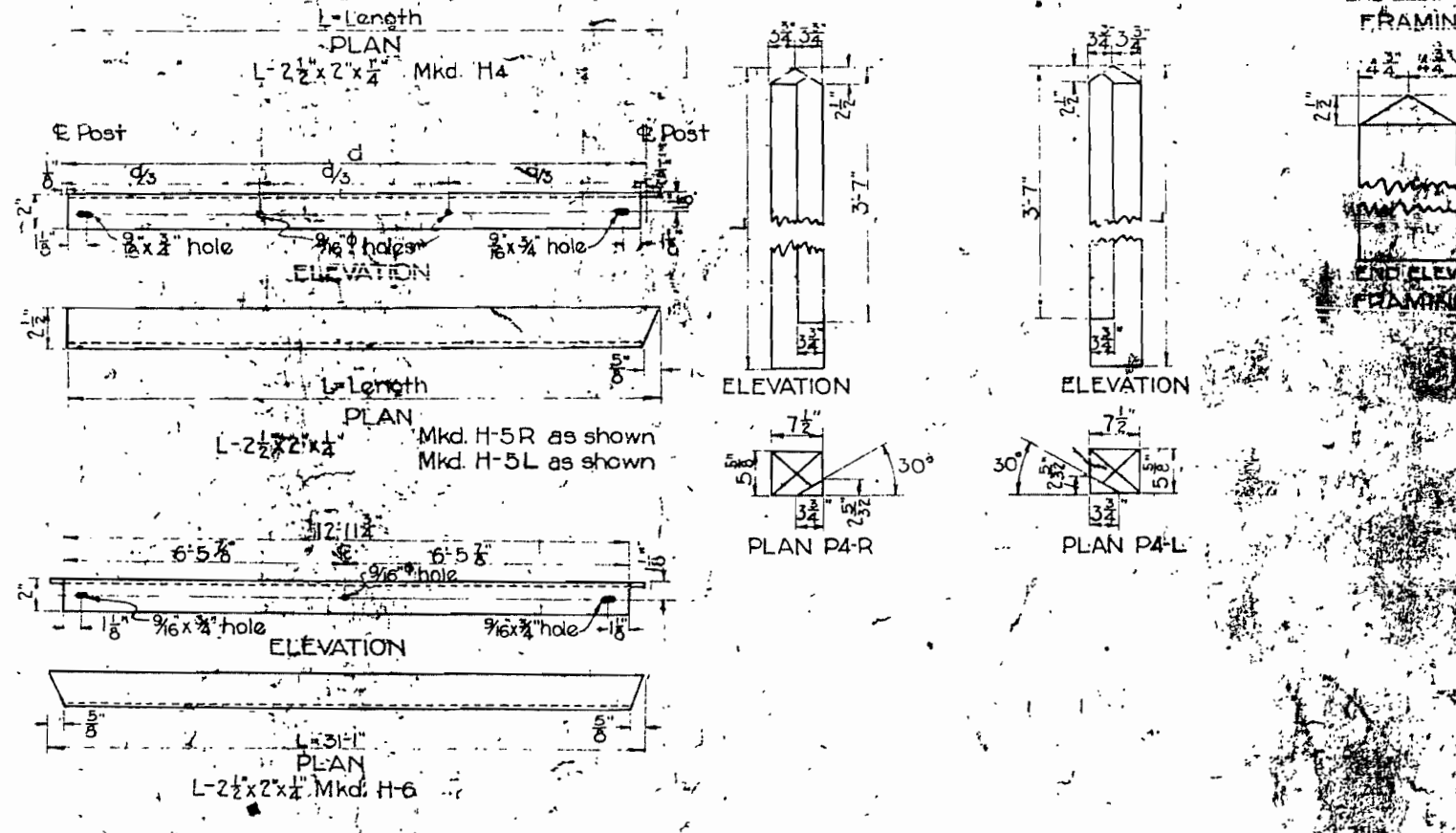
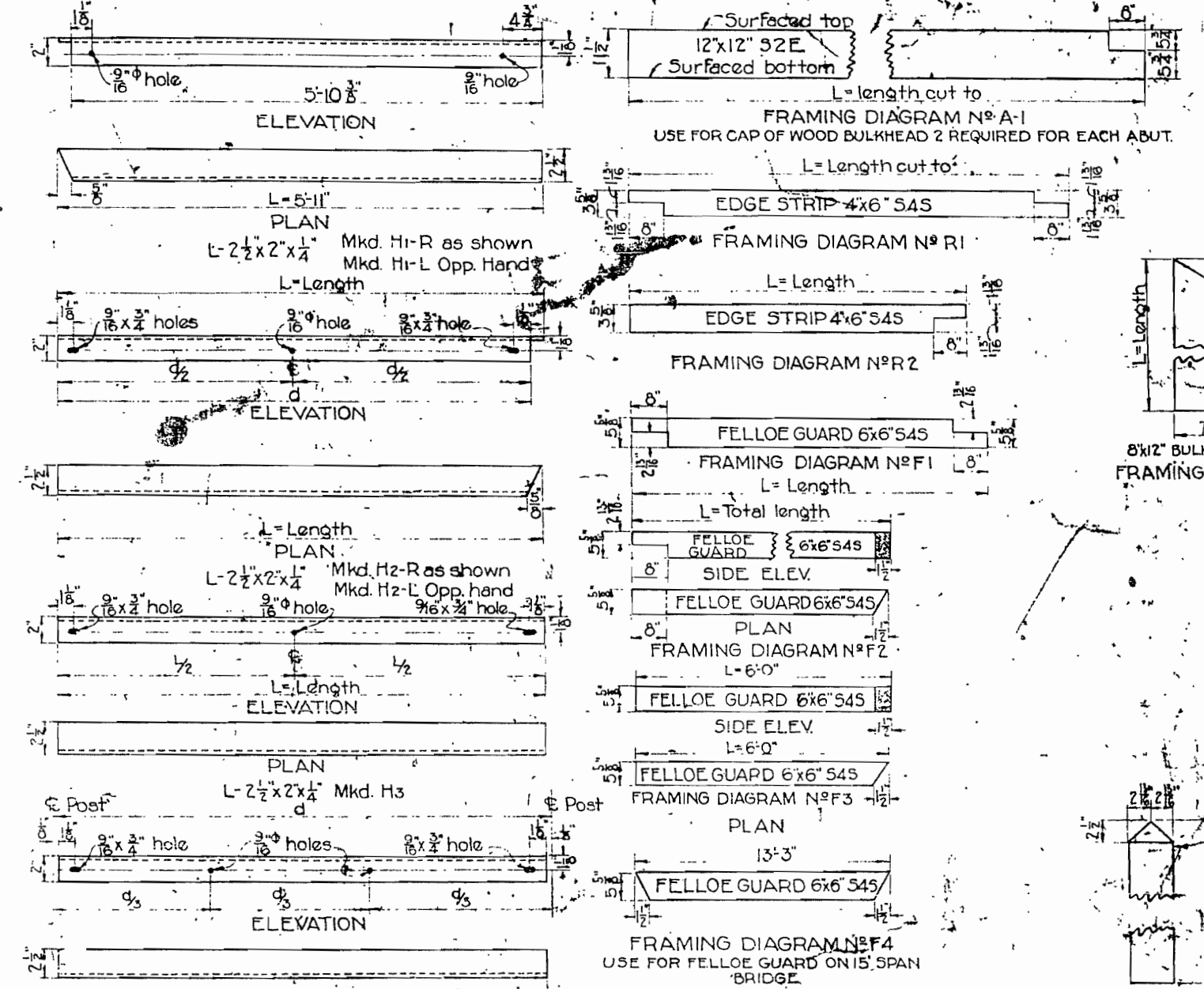


STEEL ANGLE HANDRAIL • FELLOE GUARDS & EDGE STRIPS FOR SINGLE • DOUBLE & TRIPLE 25 FT. SPANS.



NOTE:
1- 1/2" drift bolt holes shall be bored in stringers before stringers are crosscut.
2- Stringers 3-2 & 3-3 shall have ends cut square. Where stringers 5-1 are used for a single span bridge, they shall be cut to length and both ends squared.

DETAIL OF STEEL ANGLES FOR HANDRAILS



NEW MEXICO
STATE HIGHWAY DEPARTMENT
STANDARD
TREATED TIMBER
BRIDGES
FRAMING DIAGRAM
SHEET

FOR SUPERSTRUCTURE DRAWING SEE SHEET 1 OF 2
FOR SUBSTRUCTURE DRAWING SEE SHEET 2 OF 2